

# CITY OF SUNNYVALE: CITY HALL

Sustainable Public Art  
Bold and Innovative



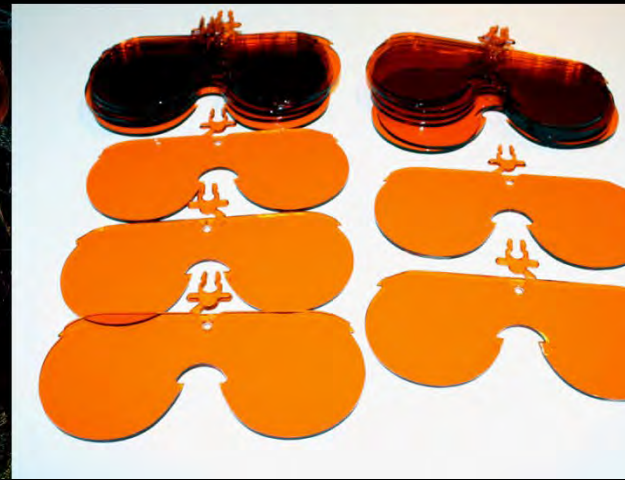
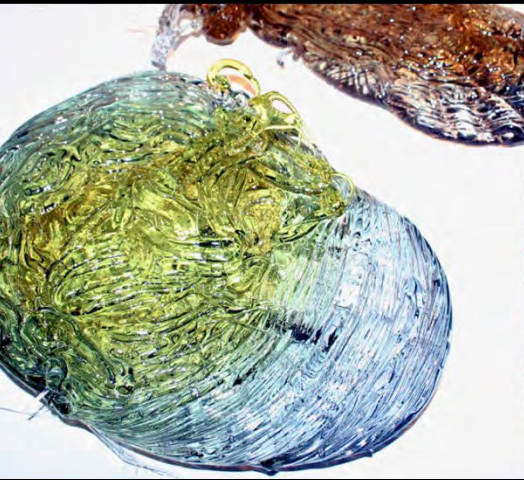




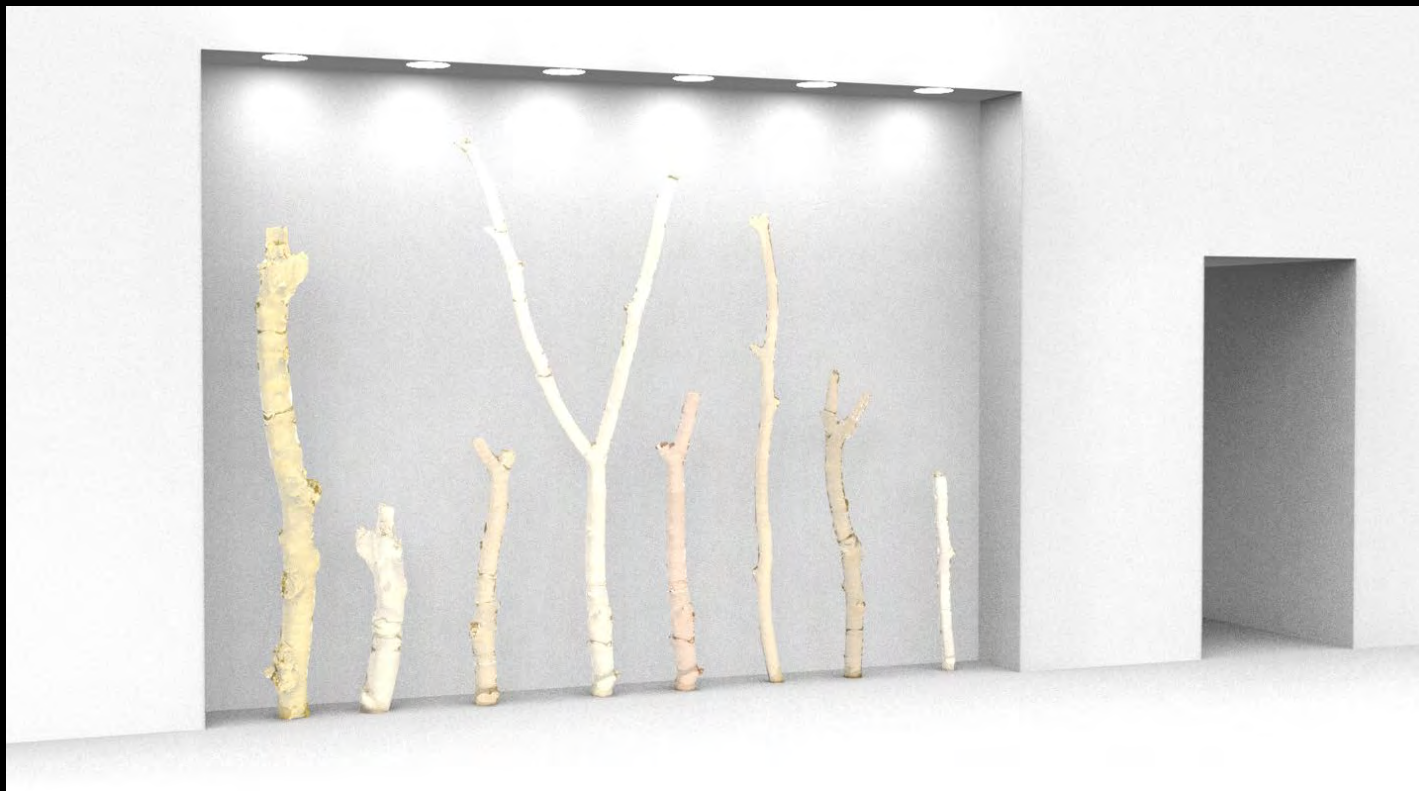


# LEED Gold Art Installation

- Recycled
- Regional
- Innovation and design
- Local (less than 500 miles)







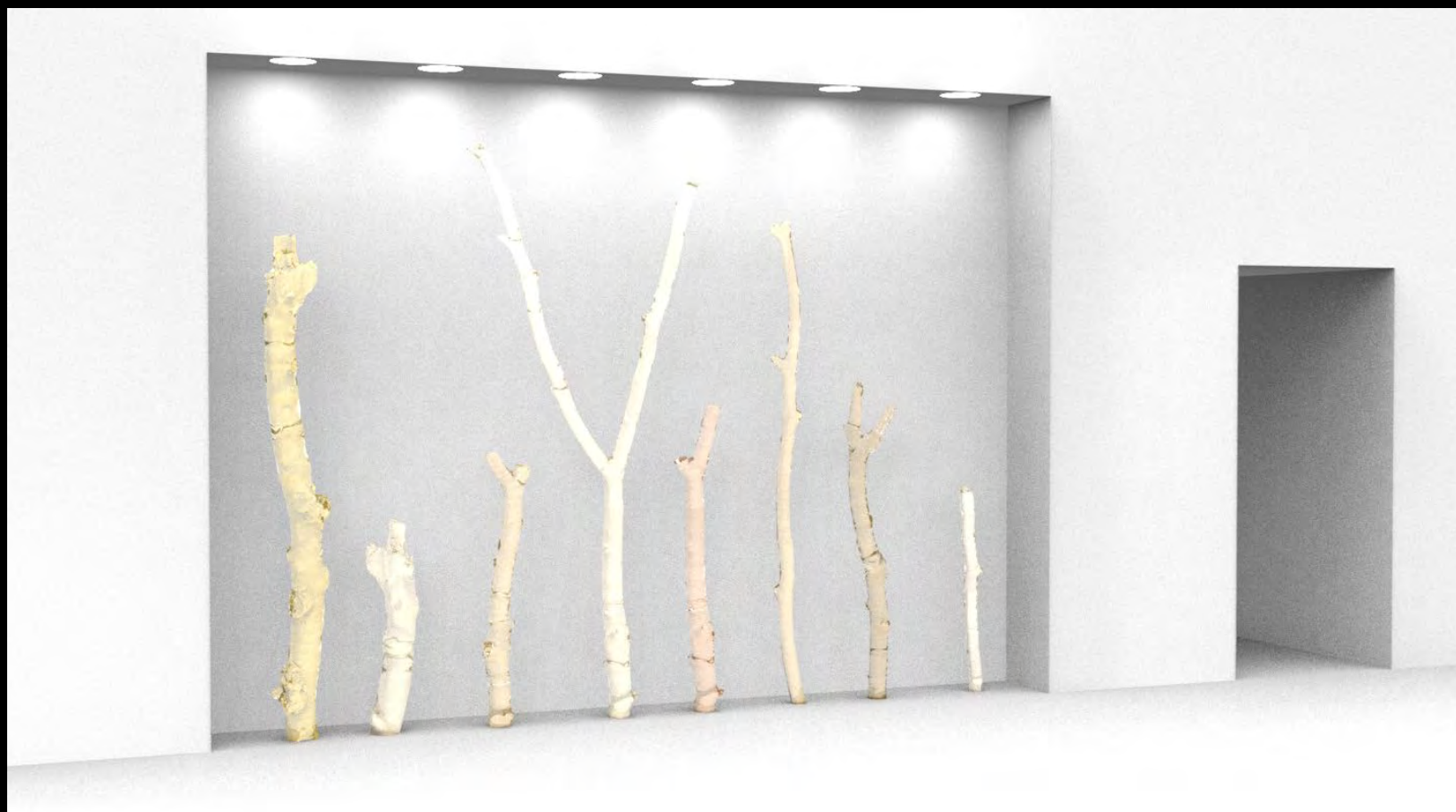
# ARTWORK SITE: SUNNYVALE CITY HALL LOBBY NICHE

Attachment 11  
Page 6 of 23





# PROPOSAL RENDERING: SUNNYVALE CITY HALL LOBBY NICHE



# COMMUNITY EVENT

- Gather and select 2-4 branches from the project site to be molded and filled with recycled plastic (Redwood Trail, North Meadow, or other)









# PREVIOUS COMMUNITY EVENT (hand molding)



The recycled art - once waste material - suspended in optically clear resin reflects and refracts light that passes through it, creating a dynamic and interactive surface that 'moves' as viewers pass near the art. Natural light cast through these optical sculptures creates additional effects; colorful projections either within the art or onto the ground increase the interactive quality of the system.

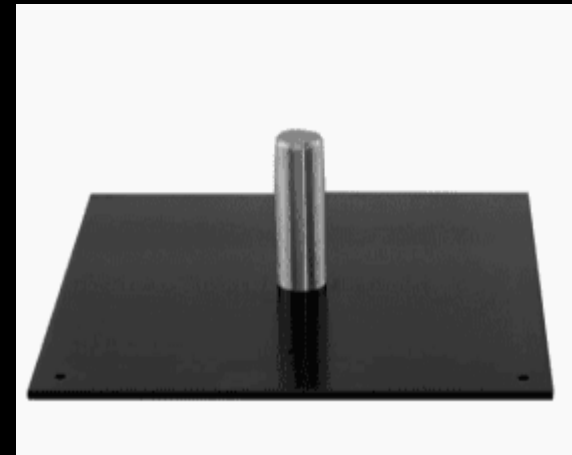




# ARTISTIC PROCESS: *Branches of Illumination*



# MOUNTING STRUCTURE: *Branches of Illumination*







# **MAINTENANCE:** *Branches of Illumination*

# Ben Phipps Studio | resume page 1

3603 E 10<sup>th</sup> st. long beach, ca 90804 | www.benhippsstudio.com

## QUALIFICATIONS

### PROJECT BUDGETS OVER \$50K:

U.N.I.T.Y - \$125K (completion 2020 1% public art for city of Elk Grove)  
twin lanterns - budget \$75K + material donations (recycled plastic, 1%  
public art for the State of Rhode Island)  
nurdle nooks - budget \$50k + material donations (recycled plastic, 1%  
public art for the City of Los Gatos)  
WoodPlay - budget \$100K  
LightProjector - budget \$50K

### WORK WITHIN AN ARCHITECTURAL CONTEXT:

U.N.I.T.Y – design/build large hanging sculpture with lighting  
and structural permits  
twin lanterns - design / build project in two 60' deep stairwells  
nurdle nooks - spatially interactive installation to new children's reading room  
WoodPlay – design build, reclaimed wood and optical art lighting  
bank of america lighting - custom light diffusers for conference center lighting  
aulac architectural lighting - accent sconces in ambient dining room setting

### TRACK RECORD ON TIME AND BUDGET:

U.N.I.T.Y – large installation completed prior to building opening  
twin lanterns - large installation completed during seven day student recess  
nurdle nooks - completed on budget & four months prior to library opening in February 2012  
lightspiel - matching funds by artist to cover the installation costs

### INTEGREGATED AND MAINTAINABLE WORK:

projects use high-efficiency LEDs with standard dimmer connections  
art has impact resistance of ballistic glass / scratch resistant hardcoat  
LEED - recycled content up to 50 %, locally sourced within 500 miles  
standard hardware and typical junction boxes, easily accessible for maintenance

### ARTISTIC MERIT / PROFESSIONAL QUALIFICATIONS:

3 large-scale institutional public art projects completed (UNITY / twin lanterns / nurdle nooks)  
gallery421 long beach public art 2012 installation winner - installed 8.2012  
competition finalist for Santa Monica, John Wayne airport, Santa Cruz behavioral health facility  
15 years professional experience as an optical and lighting engineer  
lectures at the Laser Institute of America, MIT, & The Aerospace Lighting Institute

### PROVEN ABILITY TO WORK WITH GOVERNMENT AGENCIES, ARCHITECTS AND ENGINEERS

previous project coordination with the Arts Council for Long Beach, City of Elk Grove, the Los  
Gatos Town Council and Mayor, Noll & Tam Architects, Bogard Construction, Tempo Lighting  
Specialists, Rhode Island State Council for the Arts, Office of the RI Fire Marshall, USGBC  
Rhode Island, Rhode Island College Administration, & The Long Beach Nature Center

### ABILITY TO CREATE ART THAT RESONATES WITH THE COMMUNITY AND VISITORS:

artwork is safe, durable, environmentally responsible, and visually pleasing  
scientific depth of work resonates with adults and children alike  
changing, interactive quality of work insures dynamic viewer experience

# Ben Phipps Studio | resume page 2

3603 E 10<sup>th</sup> st. long beach, ca 90804 | [www.benhippsstudio.com](http://www.benhippsstudio.com)

## EXHIBITS & INSTALLATIONS

2020	U.N.I.T.Y Elk Grove 1% Public Art Project	Elk Grove, CA
2017	Music festival art installation	Long Beach, CA
2016	WoodPlay Long Beach Café	Long Beach, CA
2012	lightSPIEL Long Beach 1% Public Art Project	Long Beach, CA
2012	Nurdle Nooks Los Gatos 1% Public Art Project	Los Gatos, CA
2010	Bank of America LED Lighting / Bubble Diffusers Private Project	Charlotte, NC
2009	Twin Lanterns Rhode Island College 1% Public Art Project	Providence, RI
2008	Fragments of Color Regency Gallery Installation	Los Angeles, CA
2008	Playing With Light Sullivan Gallery Installation	Brea, CA
2007	Native Arch Long Beach Nature Center, Public Installation	Long Beach, CA
2007	Dichroic Projector Long Beach Nature Center, Public Installation	Long Beach, CA
2007	Teleport Long Beach Nature Center, Public Installation	Long Beach, CA
2007	The Beauty of Optics Long Beach Nature Center, Public Installation	Long Beach, CA

## PRESENTATIONS & LECTURES

2015 – Feb	Lighting Institute - Los Angeles, CA
2014 – Feb	Lighting Institute - Los Angeles, CA
2011 – Sept	Laser Institute of America - LME 2011 - Chicago, IL Light Transmitting Plastics: Impact and Flammability Qualification
2011 – Aug	MIT Laser Workshop - Boston, MA Polycarbonate Laser Windows
2011 – May	Society for Information Display - Los Angeles, CA Color Displays and LED Illumination

## PROFESSIONAL EXPERIENCE

2000 – Current. Ben Phipps Studio Designer and Owner  
Long Beach, CA

LED lighting systems and public art installations with invented LEED compliant artistic lighting material. Manufactured from recycled plastic and glass. Work is based on architectural glass and polymer lamination and sculpture techniques.

2004 - Current. Cevians Lighting and Optics  
Costa Mesa, CA

Manage an interdisciplinary team of 6 engineers to design and develop optical filters and technology with project design budgets over \$500K. The team consists of an optical engineer, PHD chemist, mechanical engineer, electrical engineer, industrial designer, and manufacturing engineer. Process and material research in plastics, glass lamination, LED lighting, dichroic coatings, optical filter design and optoelectronic systems.

## EDUCATION

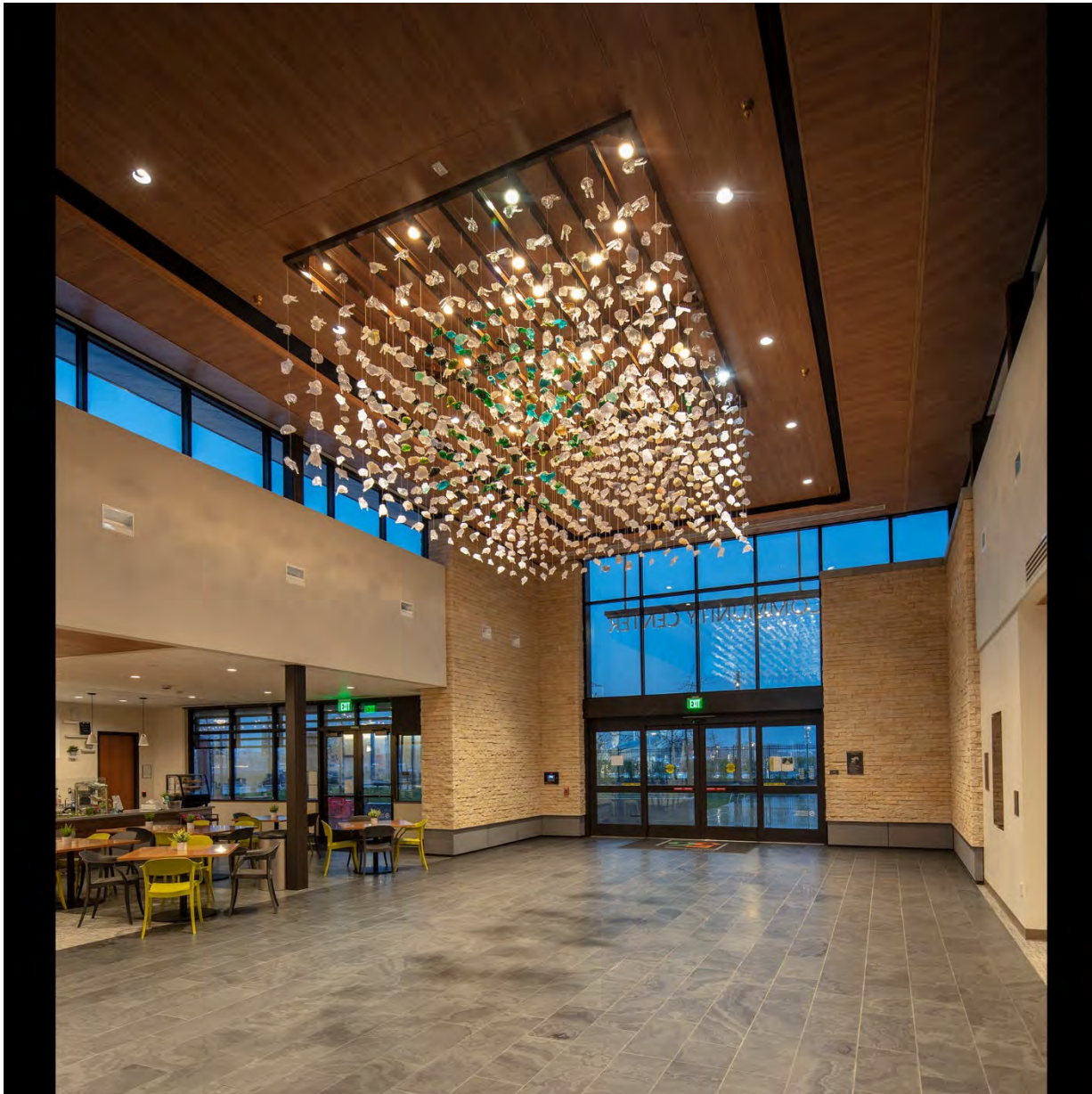
2000  
University of Rhode Island - Kingston, RI  
Bachelor of Science in Electrical Engineering magna cum laude



# Ben Phipps Studio | Reference Work

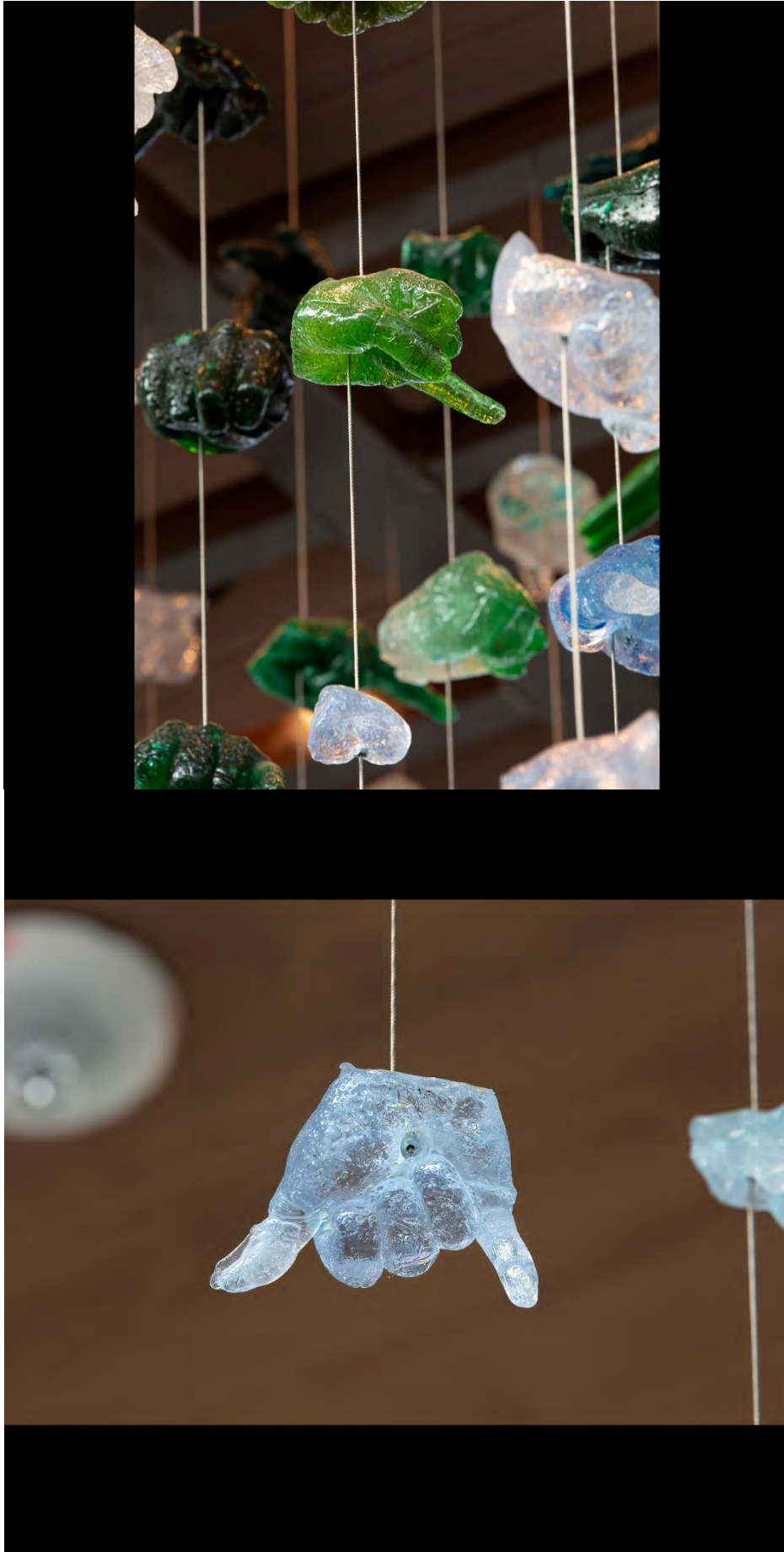
3603 E 10<sup>th</sup> st. long beach, ca 90804 | 714.943.5758 | [www.benphippsstudio.com](http://www.benphippsstudio.com)

U.N.I.T.Y Polymer, Glass, Recycled Plastic, LED Lighting 10' x 14' x 8' 2020 Nine hundred and ninety hands create a visual message within this sculpture. Over 50 people from a diverse background provided molds of their hands. Each mold is one of six different letters from the sign language alphabet. A peace sign is placed as the first letter in each column followed by U.N.I.T.Y, creating a message of Peace and UNITY. Multi-colored hands form a globe at the center of the sculpture. Peace and UNITY is repeated 165 times in this sculpture.



# Ben Phipps Studio | Reference Work

3603 E 10<sup>th</sup> st. long beach, ca 90804 | 714.943.5758 | [www.benhippsstudio.com](http://www.benhippsstudio.com)

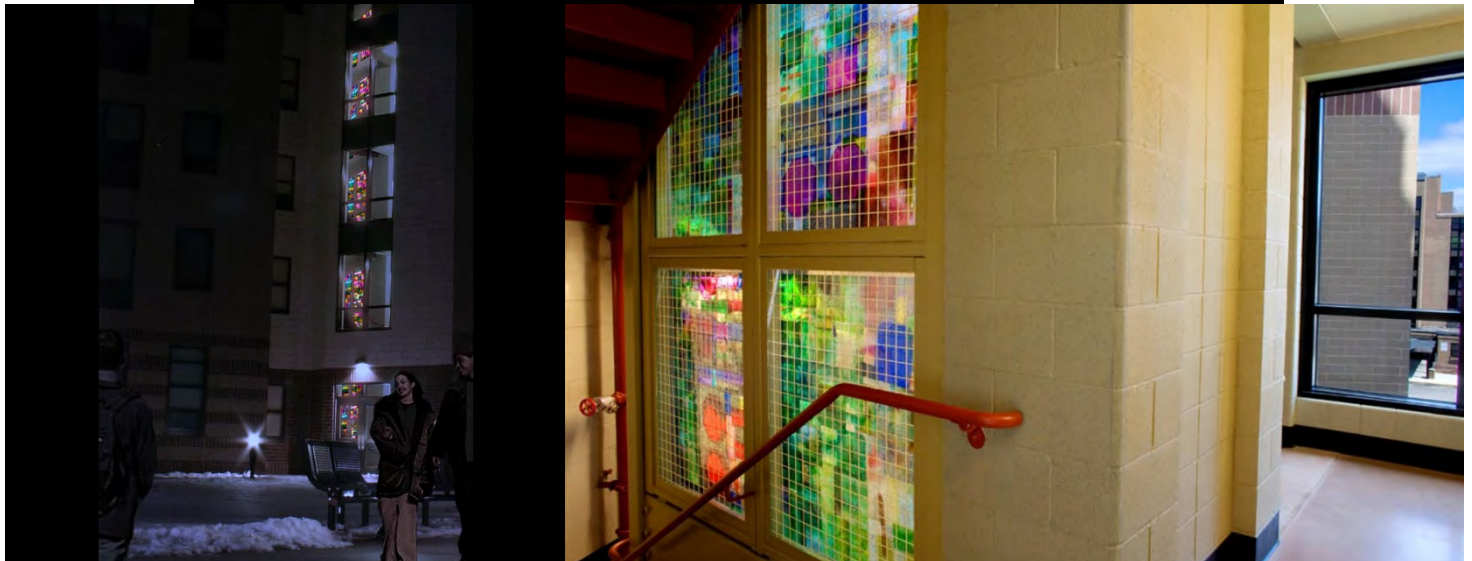
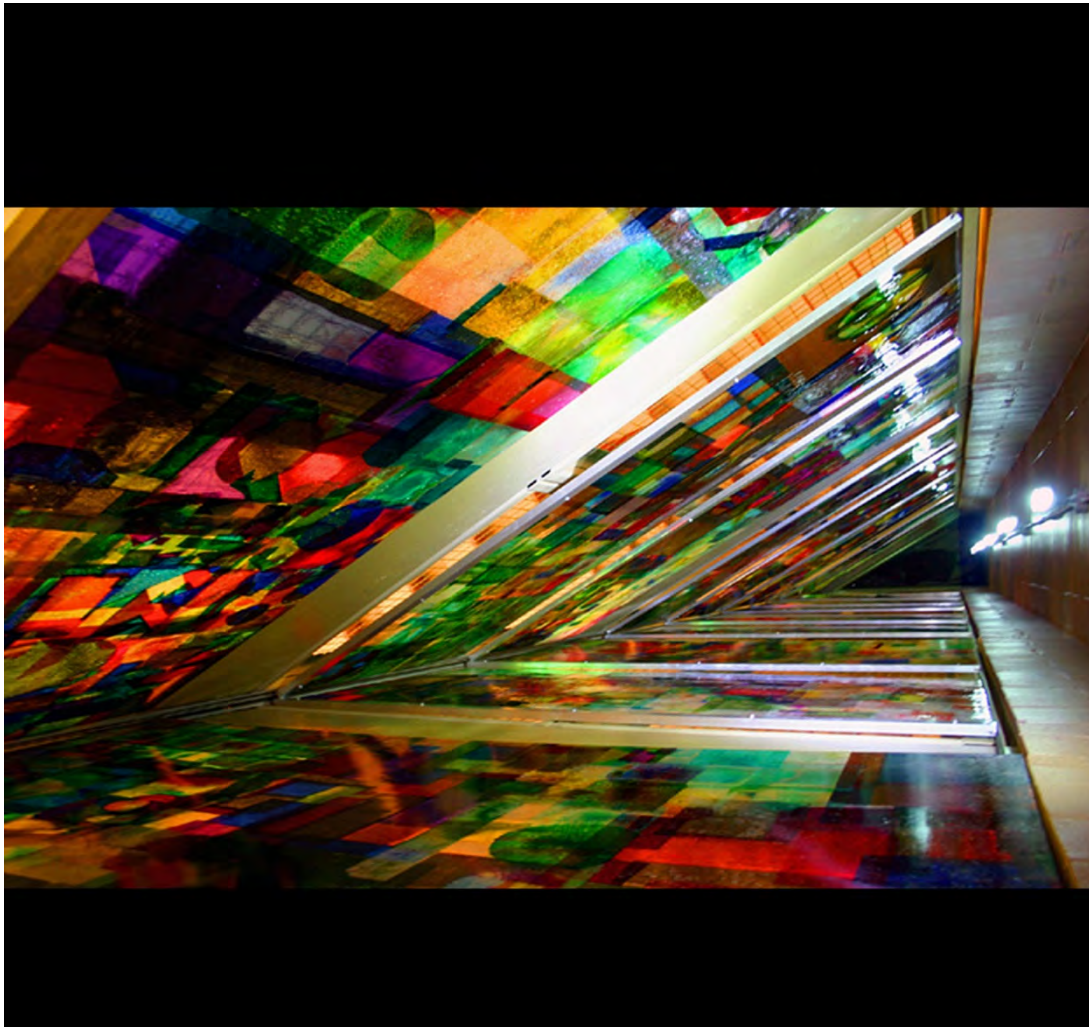




# Ben Phipps Studio | Reference Work

3603 E 10<sup>th</sup> st. long beach, ca 90804 | 714.943.5758 | [www.benphippsstudio.com](http://www.benphippsstudio.com)

Twin Lanterns. Completed 2009 for Rhode Island College. Stairway Lighting feature in first LEED certified dormitory building in Rhode Island. Over 1,500 SF of laminated recycled plastic art panels in two 60' stairwells, custom steel structure, custom LED floodlighting. Rhode Island 1% public art project, \$75K plus material donations. Commissioned by the Rhode Island State council on the Arts. Design / Build Project.





# Ben Phipps Studio | Reference Work

3603 E 10<sup>th</sup> st. long beach, ca 90804 | 714.943.5758 | [www.benphippsstudio.com](http://www.benphippsstudio.com)

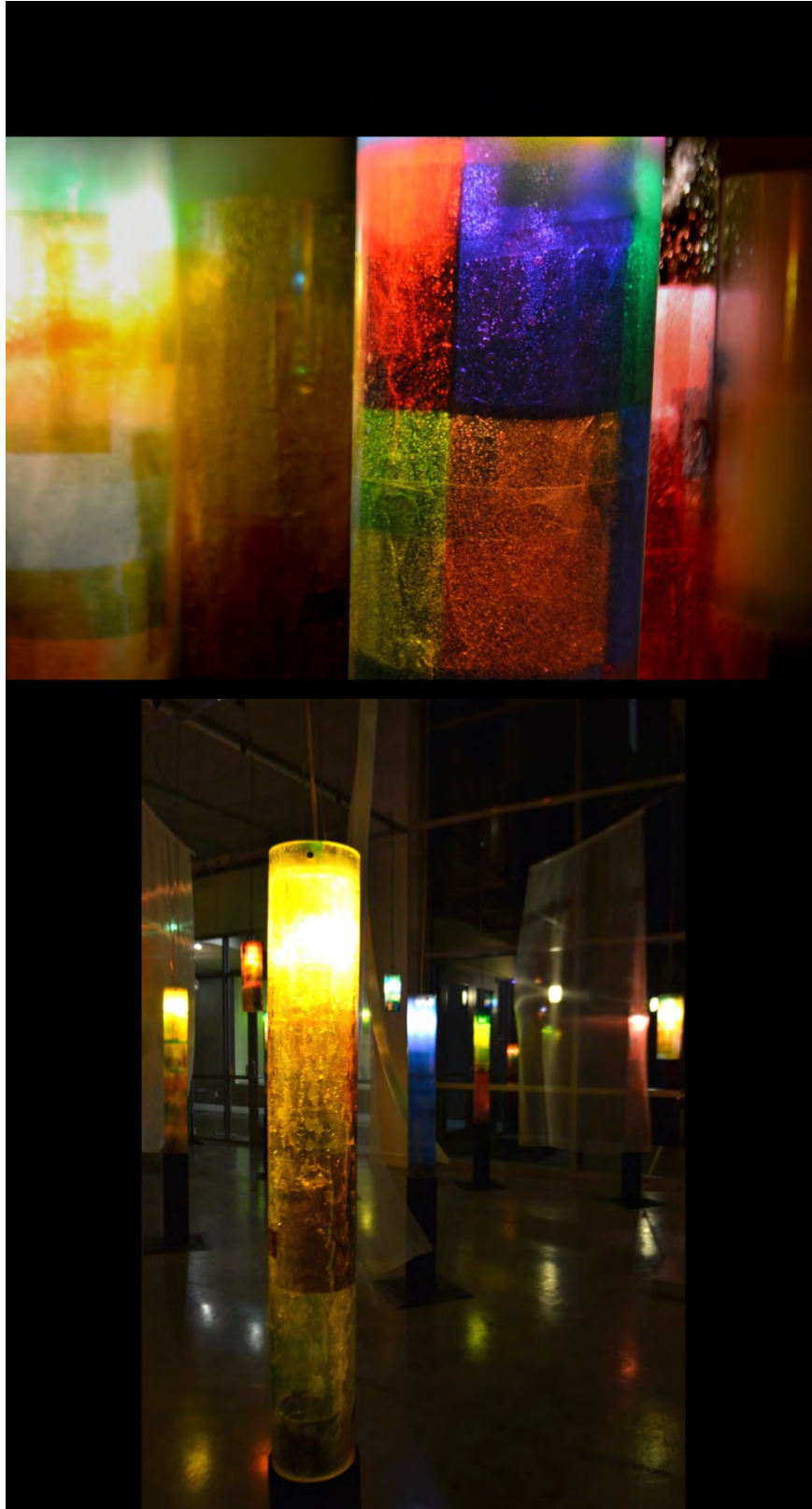
Nurdle Nooks. Completed 2012 for the Los Gatos Public Library. Circular backlit panels of art representing of our solar system. Laminated recycled plastic and optical resins, custom designed LED backlighting panels, milled HDPE trim. 16 circles, 8" to 48" diameter. \$50k plus material donations. Commissioned by Los Gatos Town Council. Design / Build Project.



# Ben Phipps Studio | Reference Work

3603 E 10<sup>th</sup> st. long beach, ca 90804 | 714.943.5758 | [www.benphippsstudio.com](http://www.benphippsstudio.com)

lightSPIEL installed 2012 for the Arts Council for Long Beach & The Collaborative @ gallery421.  
Installation for fall 2012 - varying dimensions of hanging light tubes in a matrix of sheer and semi-transparent diffuser panels. Laminated cast art tubes, custom track LED track lighting and linen sheets in a 1000 SF installation. 1% Long Beach public art installation, \$5K Arts Council, \$5K private donations + matching funds from Ben Phipps Studio.





# Ben Phipps Studio | Reference Work

3603 E 10<sup>th</sup> st. long beach, ca 90804 | 714.943.5758 | [www.benphippsstudio.com](http://www.benphippsstudio.com)

Light Projector, 2017, designed and built for a company lobby. Steel framing, LED lighting and recycled plastic. \$50K private funds

