



Sunnyvale Community Center Grounds Renovation Project

Marlon Quiambao, Senior Engineer
December 14, 2022



Site Background

- Sunnyvale Community Center
 - ◆ 14+ acres, built in 1972
 - ◆ Senior Center added in 2003
 - ◆ Community Center Building Updates in 2019
- Project Area
 - ◆ Landscape & Paths: 403,036 sf (79%)
 - ◆ Lower Pond: 98,765 sf (19%)
 - ◆ Upper Fountain with Courtyards: 9,700 sf (2%)



Project Scope and Goals

- Approved Capital Improvement Project
 - ◆ Includes renovation of grounds, not including modifications to buildings, parking lots, or orchard
- Design Goals:
 - ◆ Enhance recreational opportunity
 - ◆ Increase attractiveness
 - ◆ Reduce the use of utilities

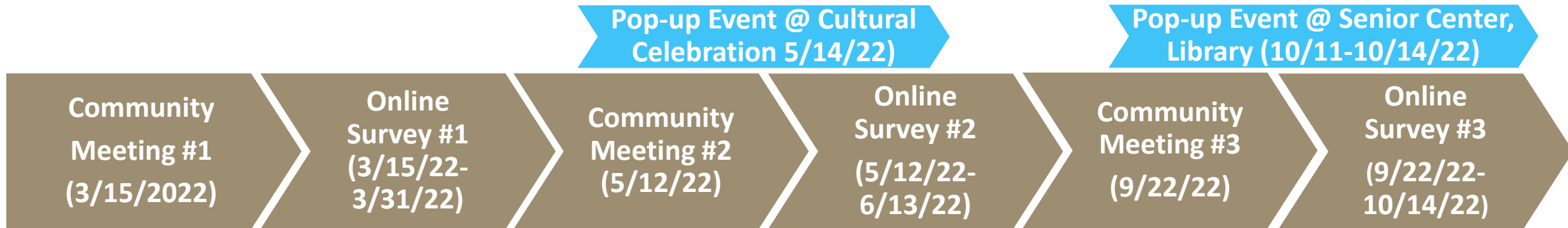


Project Milestones

- Community Outreach
 - ♦ Community Meeting #1 3/15/22
 - ♦ Online Survey #1 3/15/22- 3/31/22
 - ♦ Community Meeting #2 5/12/22
 - ♦ Online Survey #2 5/12/22- 6/13/22
 - ♦ Community Meeting #3 9/22/22
 - ♦ Online Survey #3 9/22/22- 10/14/22
- City Review
 - ♦ **PRC Meeting TONIGHT (12/14)**
 - ♦ City Council Review January 2023 (Tentative)
- Construction Drawings – Late 2023
- Bidding – Early 2024
- Construction Phase – Spring 2024-Fall 2025



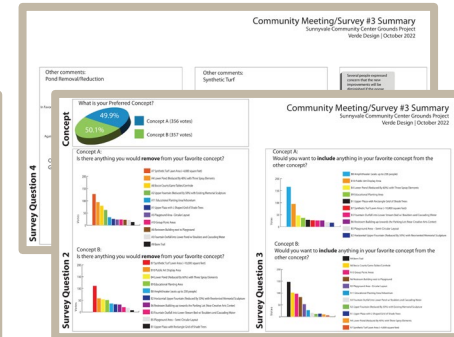
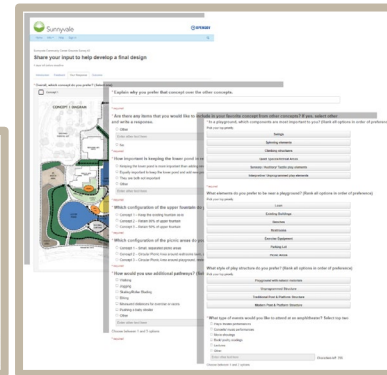
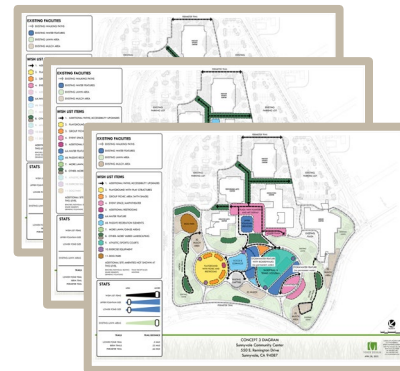
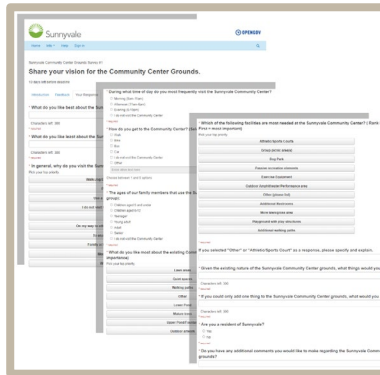
Timeline – Community Input Process



- Likes and Dislikes, Wants and Needs
- Use/demographic questions (survey only)

- Loss of Pond vs. Gaining Program
- Feedback on inspiration images

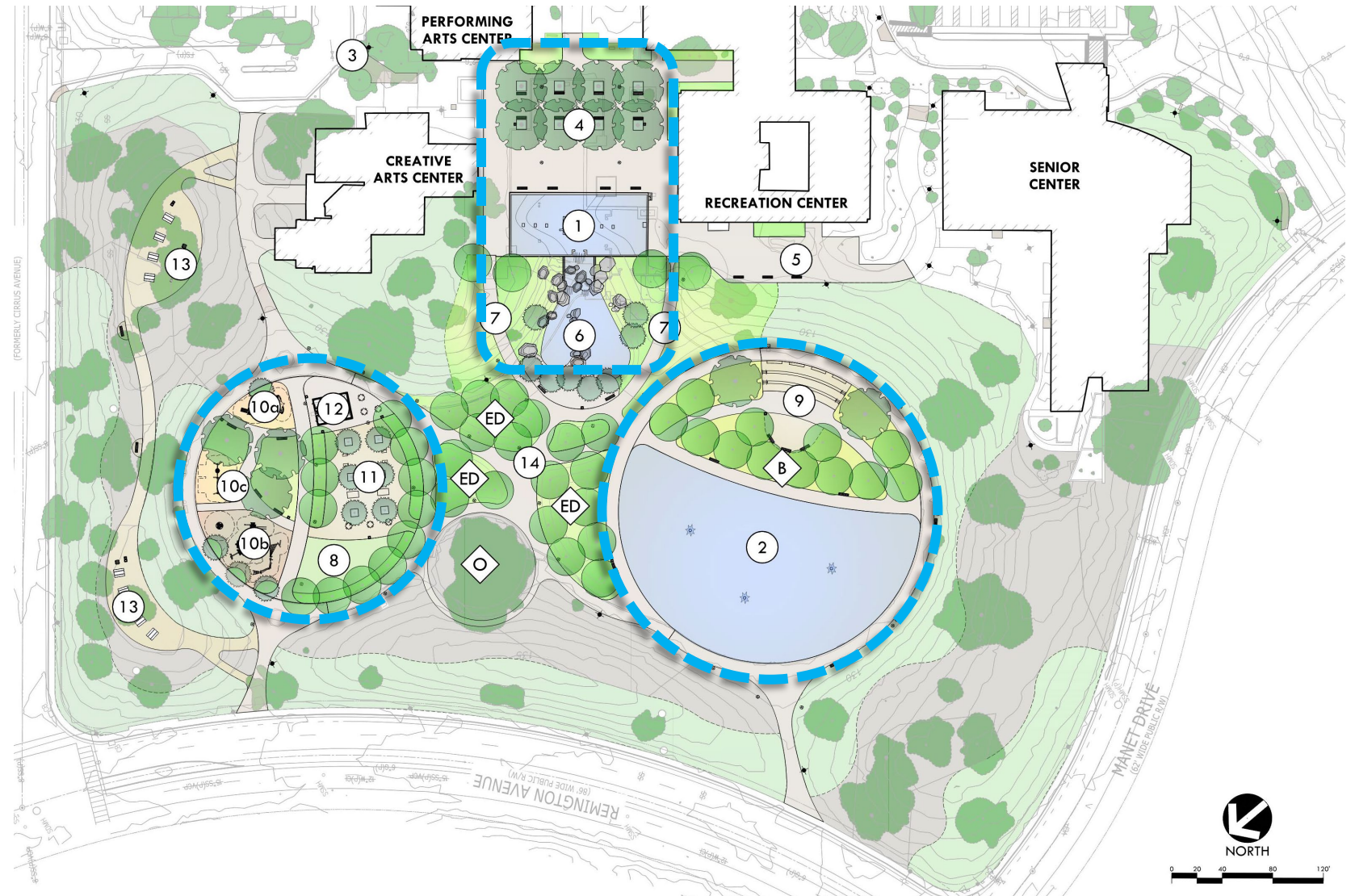
- Presented 2 site plans with differing layouts
- Feedback on layout and program elements



Preferred Concept Plan

LEGEND:

- ① UPPER FOUNTAIN (REDUCED BY 50%)
W/ EXISTING MEMORIAL SCULPTURE
- ② LOWER POND (REDUCED BY 60%)
- ③ SITE ADA ACCESSIBILITY IMPROVEMENTS AT
EXISTING PAVING AREAS
- ④ UPPER PLAZA W/ GRID OF SHADE TREES
- ⑤ LOWER PLAZA OVERLOOK W/ BENCHES
- ⑥ FOUNTAIN OUTFALL INTO LOWER STREAM BED W/
BOULDERS AND CASCADING WATER
- ⑦ SLOPED WALK DOWN TO LOWER POND AREA
- ⑧ SYNTHETIC TURF LAWN AREA
- ⑨ INFORMAL SEATING/AMPHITHEATER STYLE SPACE
(110 CAPACITY)
- ⑩a PLAYGROUND AREA "TOT LOT" (AGES 2-5)
- ⑩b PLAYGROUND AREA (AGES 5-12)
- ⑩c PLAYGROUND SWINGS
- ⑪ RECREATION AREA WITH CORNHOLE, TABLE TENNIS,
AND CHESS/CHECKERS TABLES
- ⑫ RESTROOM/MECHANICAL EQUIPMENT BUILDING
- ⑬ BERM TRAIL WITH PICNIC AREAS
- ⑭ INTERNAL WALKWAYS/
POSSIBLE ART DISPLAY AREA
- ED EDUCATIONAL PLANTING AREA/ARBORETUM
- B BIORETENTION AREA
- O EXISTING HERITAGE OAK



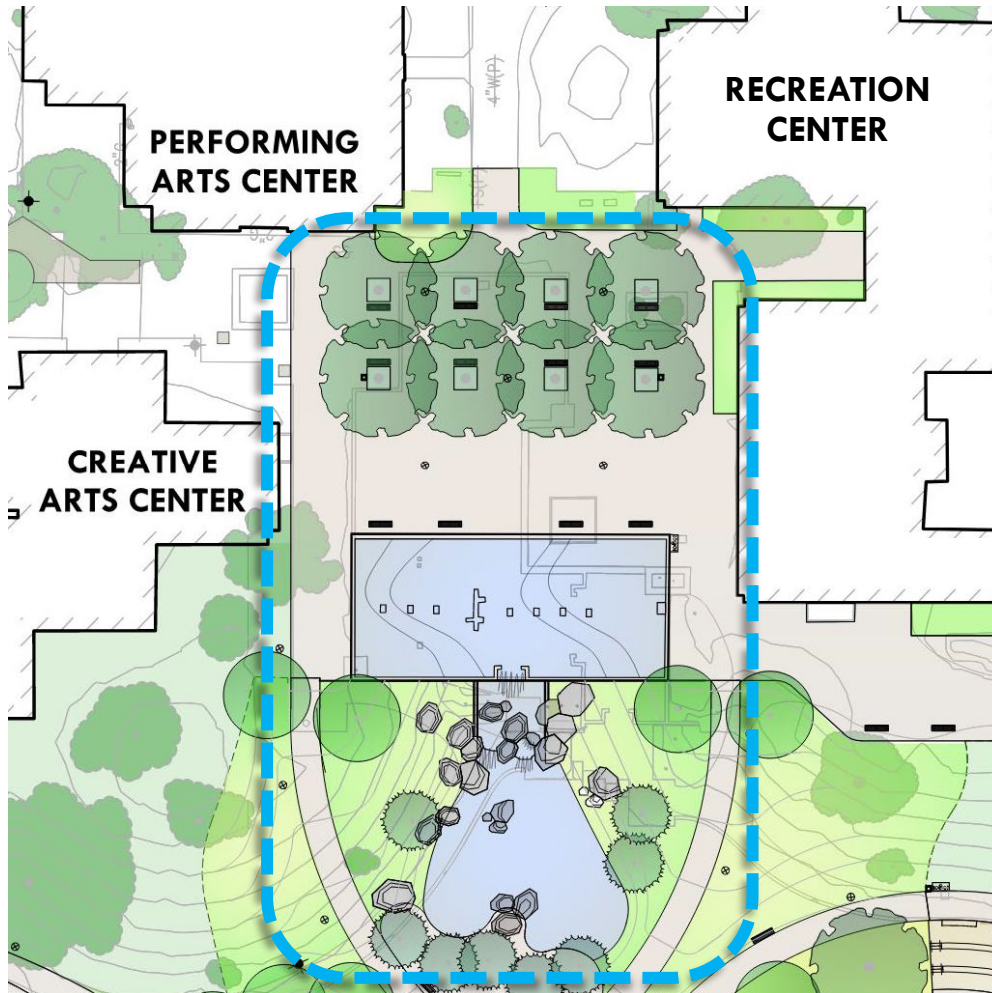
Walking Paths / Circulation

LEGEND :

- ■ ■ ■ ■ OUTER PATHWAY (.66 MILES)
- ■ ■ ■ ■ LOWER PATHWAY (.30 MILES)
- ■ ■ ■ ■ LOWER PATHWAY W/ BERM TRAIL (.36 MILES)
- ■ ■ ■ ■ LOWER POND PERIMETER PATHWAY (.14 MILES)



Preferred Site Plan – Upper Fountain and Lower Stream Bed



- Upper Fountain
 - ◆ Reduced by 50%
 - ◆ Reoriented for more open plaza space between buildings
 - ◆ Grid of shade trees with seating
 - ◆ Flexible space for events or quiet seating
- Memorial Sculpture to be reoriented to align with fountain
- Waterfall into lower stream bed

Upper Fountain and Lower Stream Bed – Perspective



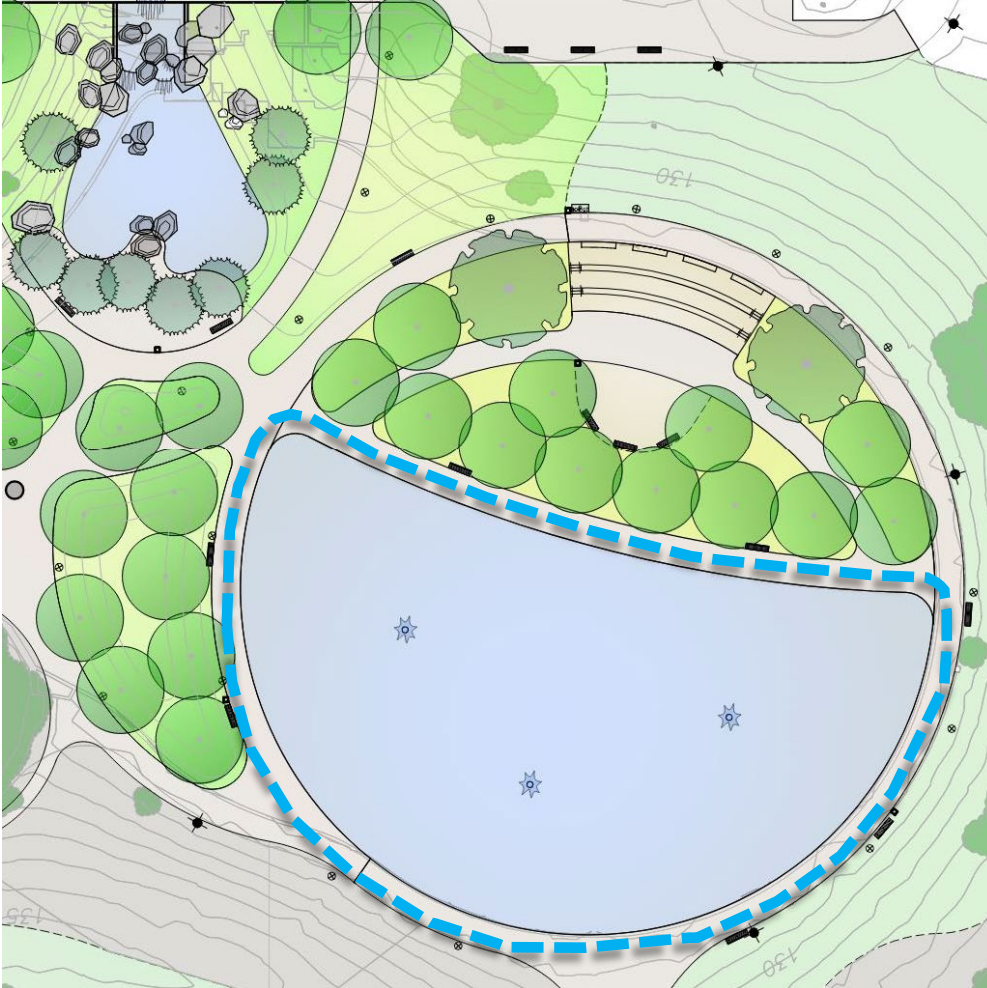
Plaza space for
City events or
group activities

Lower stream bed
with boulders and
cascading water

Reduced upper fountain
by 50% and reoriented
Memorial sculpture

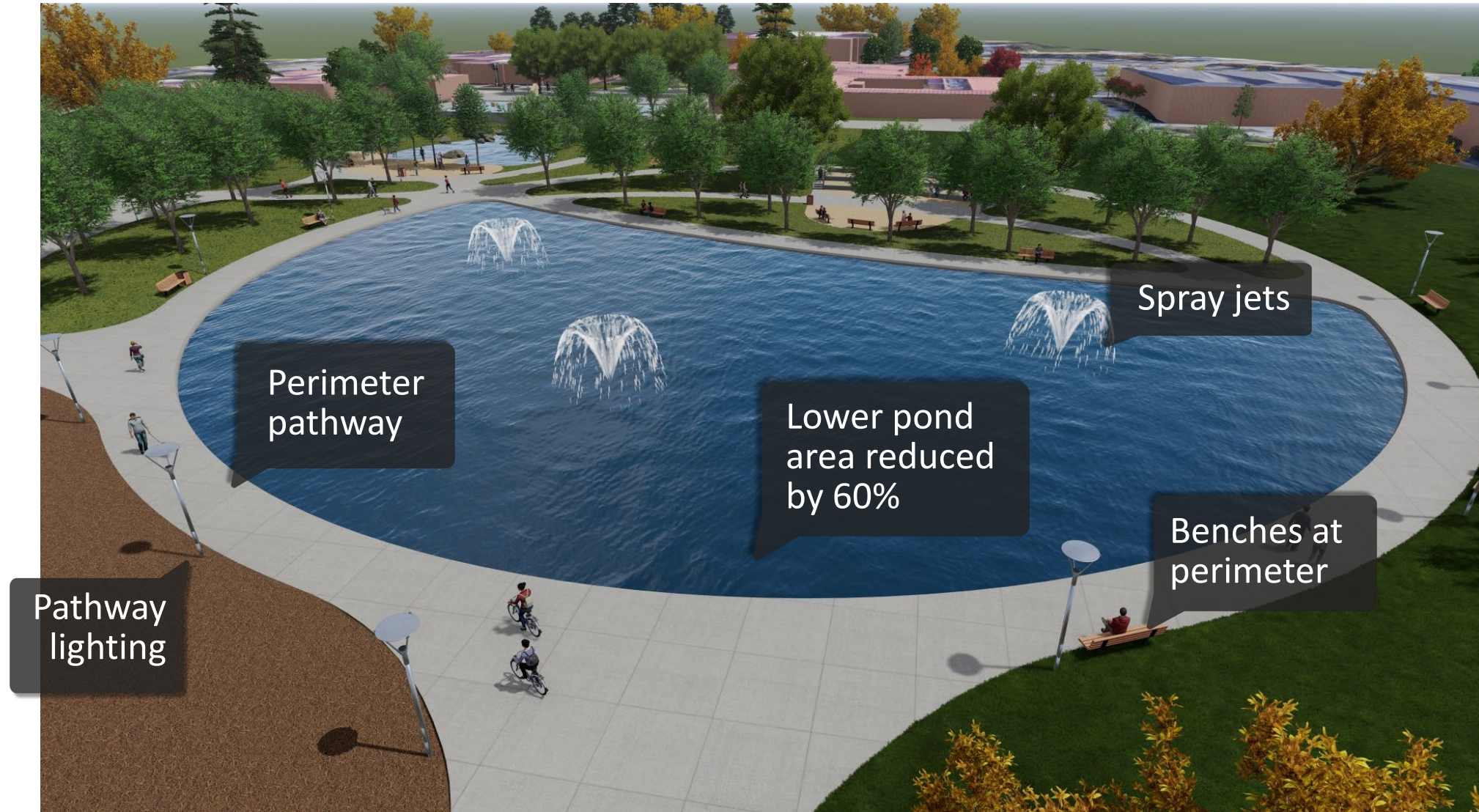
Sloped walkway

Preferred Site Plan – Lower Pond



- Lower Pond
 - ◆ Reduced by 60%
 - ◆ Rebuilt perimeter wall and basin
 - ◆ Three spray jets for aeration
 - ◆ Treated with mechanical and chemical filtration (UV/ozone) for better water quality

Lower Pond – Perspective



Informal Seating/Amphitheater-Style Space



- Flexible space for informal events or daily seating area
 - ◆ Built-in concrete seat walls
 - ◆ Seats up to 100 people
 - ◆ ADA accessible
 - ◆ Lower pond backdrop

Informal Seating/Amphitheater Style Space – Perspective



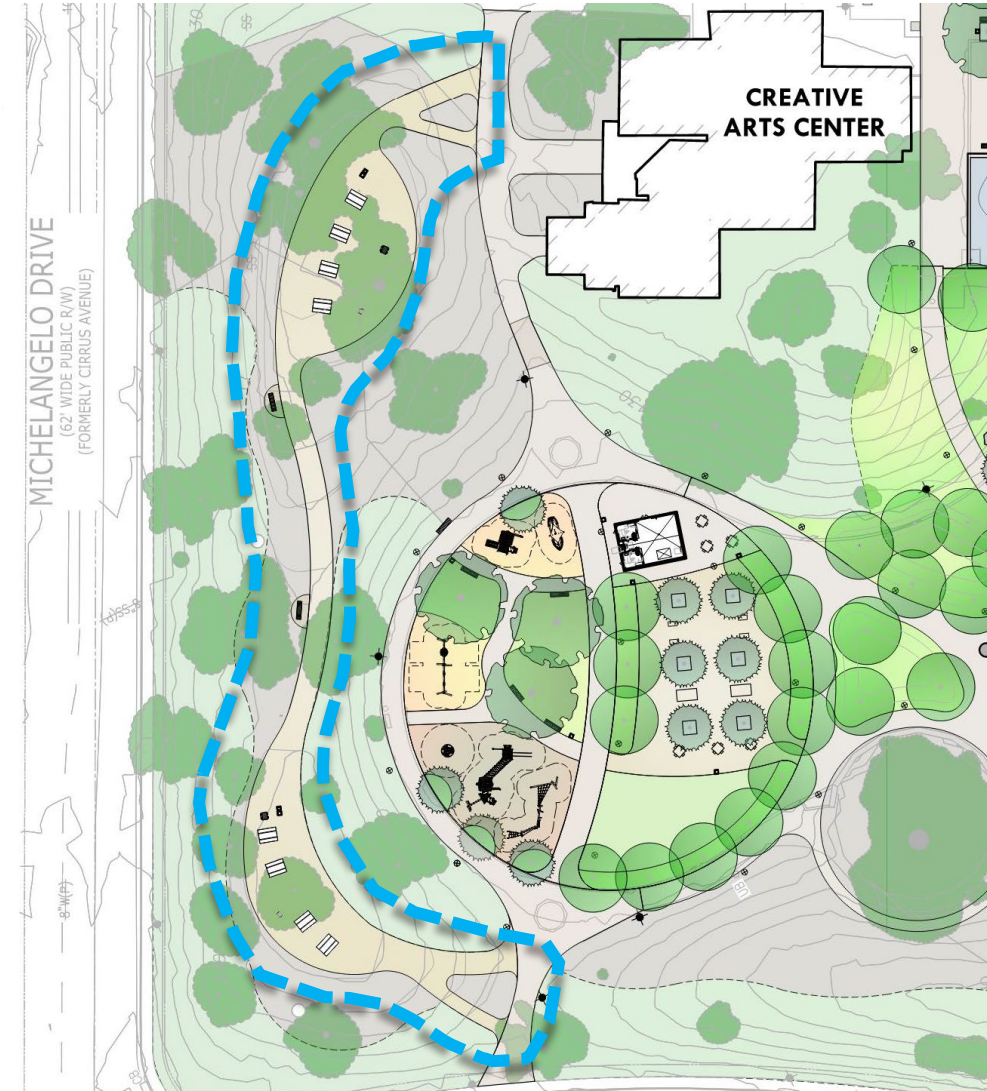
Lower pond
and jets as
backdrop

Accessible
pathway to
lower level

Informal seating
with accessible
spaces

Built-in
concrete
seat walls

Berm Trail and Picnic Areas



- Berm trail along the northern berm
 - ◆ Utilizes existing tree cover
 - ◆ Connects two picnic areas
 - ◆ Includes two shaded, quiet seating areas overlooking the active space

Berm Trail and Picnic Areas – Perspective



Restrooms / Mechanical Building



- Restroom/Mechanical Building
 - ◆ Prefabricated structure
 - ◆ Exterior aesthetic to be compatible with existing buildings
 - ◆ Restroom has two unisex stalls and mechanical chase

Restrooms / Mechanical Building – Perspective



Passive Recreation Area



- Recreation Area includes
 - ◆ Cornhole boards, Ping Pong, and Chess/checker game tables
 - ◆ Grid of trees for shade
 - ◆ Small flexible space with synthetic turf for unprogrammed play

Passive Recreation Area – Perspective



Synthetic
turf lawn
area

Ping pong
tables

Game tables for
checkers/chess

Cornhole
boards

Playground Area



- Playground area includes:
 - ◆ Separate play areas for children aged 2-5 and 5-12
 - ◆ Ground surfacing is a combination of resilient surfacing and engineered wood fiber (EWF)
 - ◆ Shade trees and planting for buffer

Playground Area – Tot Lot (ages 2-5)



Playground Area – School-aged Children (ages 5-12)



Age 5-12
equipment

Shade trees at
playground
perimeter

Planting buffer
between areas
for separate age
groups

Engineered
wood fiber

Project Design Goals - Achieved

◆ Enhancing Recreational Opportunity

- ✓ Expanded programmed use areas
- ✓ Incorporated outdoor recreational areas

◆ Increasing Attractiveness

- ✓ Renovation of water features
- ✓ Landscape improvements
- ✓ Updates to site furnishings & finishes

◆ Reducing Use of Utilities

- ✓ Reduced areas requiring irrigation
- ✓ Reduction/modernization of water feature
- ✓ Upgrades to parking lot and pedestrian lighting



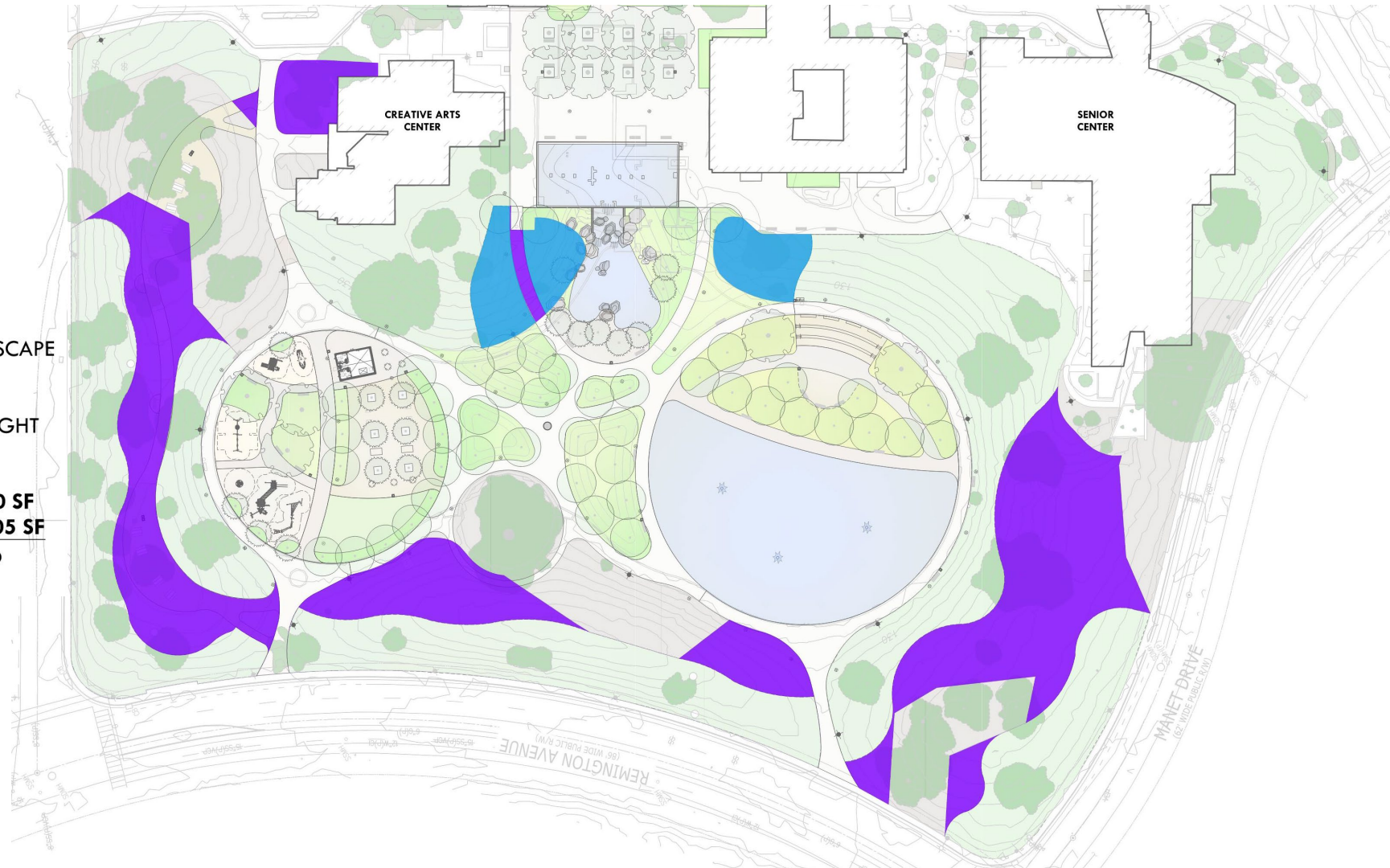
Overall Reduction of Turf Areas

LEGEND:

LANDSCAPE ELEMENTS:

- NATIVE/DROUGHT TOLERANT SHRUB AREA
- EXISTING MULCH AREA TO REMAIN
- EXISTING LAWN AREA TO REMAIN (117,825 SF)
- TURF AREAS TO BE CONVERTED TO MULCH/HARDSCAPE (55,100 SF)
- TURF AREAS TO BE CONVERTED TO NATIVE/DROUGHT TOLERANT SHRUB AREA (8,900 SF)

A. TOTAL TURF REDUCTION:	64,000 SF
B. TOTAL EXISTING TURF:	184,805 SF
PERCENT REDUCTION (A/B)	34.6%



Mitigation Measures – Goose Population



What is attracting the goose population?





- Clipped lawn area for foraging
- Water for landing
- Direct access between lawn and pond

Deterrents implemented in Design:

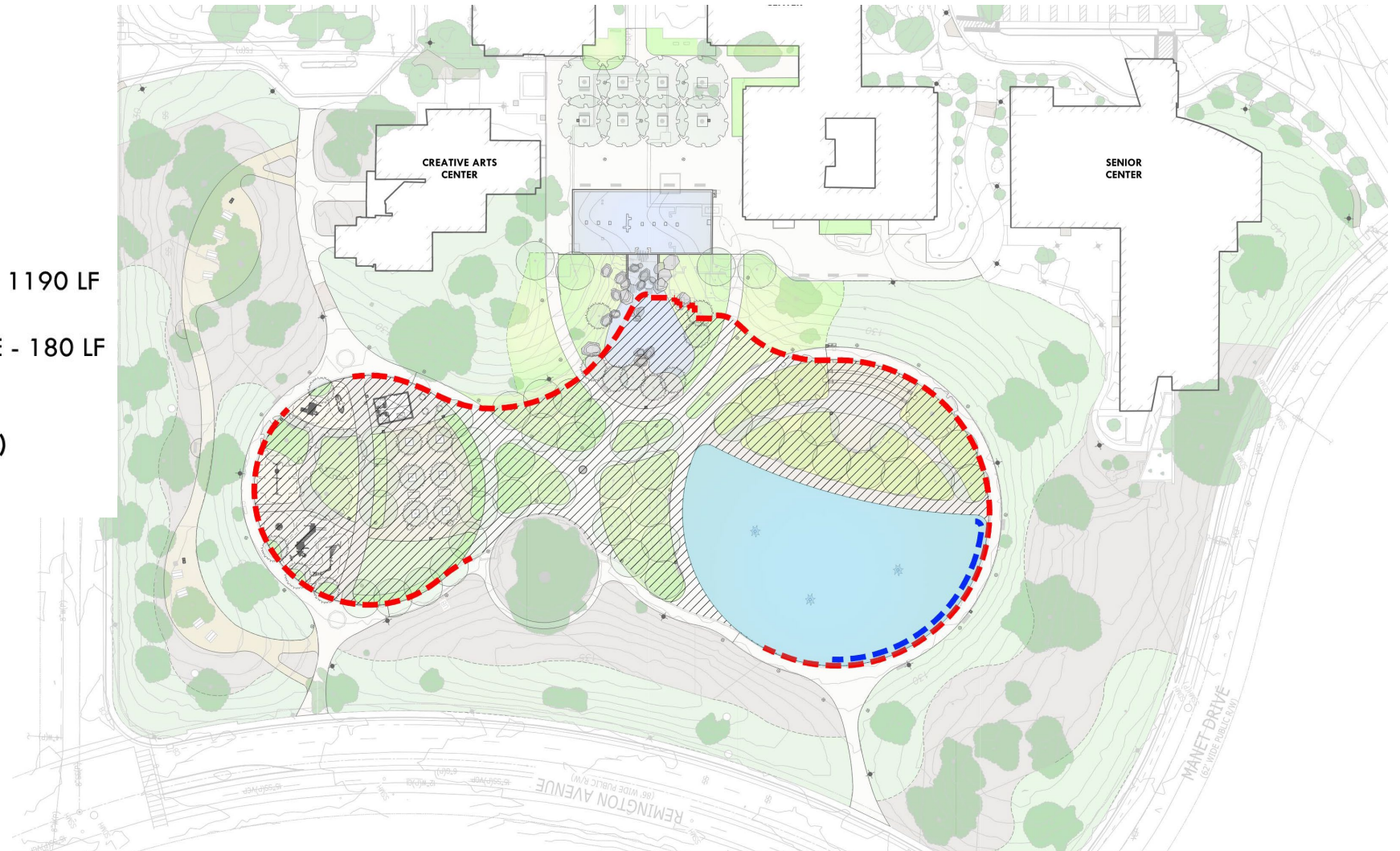
- Reduced total lawn area
- Reduced total pond area
- Reduced total amount of lawn/pond interface
- Increased physical barriers between lawn/pond

Goose Mitigation – Reduction of Pond/Lawn Interface

LEGEND:

-  EXISTING POND
-  PROPOSED REDUCED POND
-  EXISTING LAWN/POND INTERFACE - 1190 LF
-  PROPOSED LAWN/POND INTERFACE - 180 LF

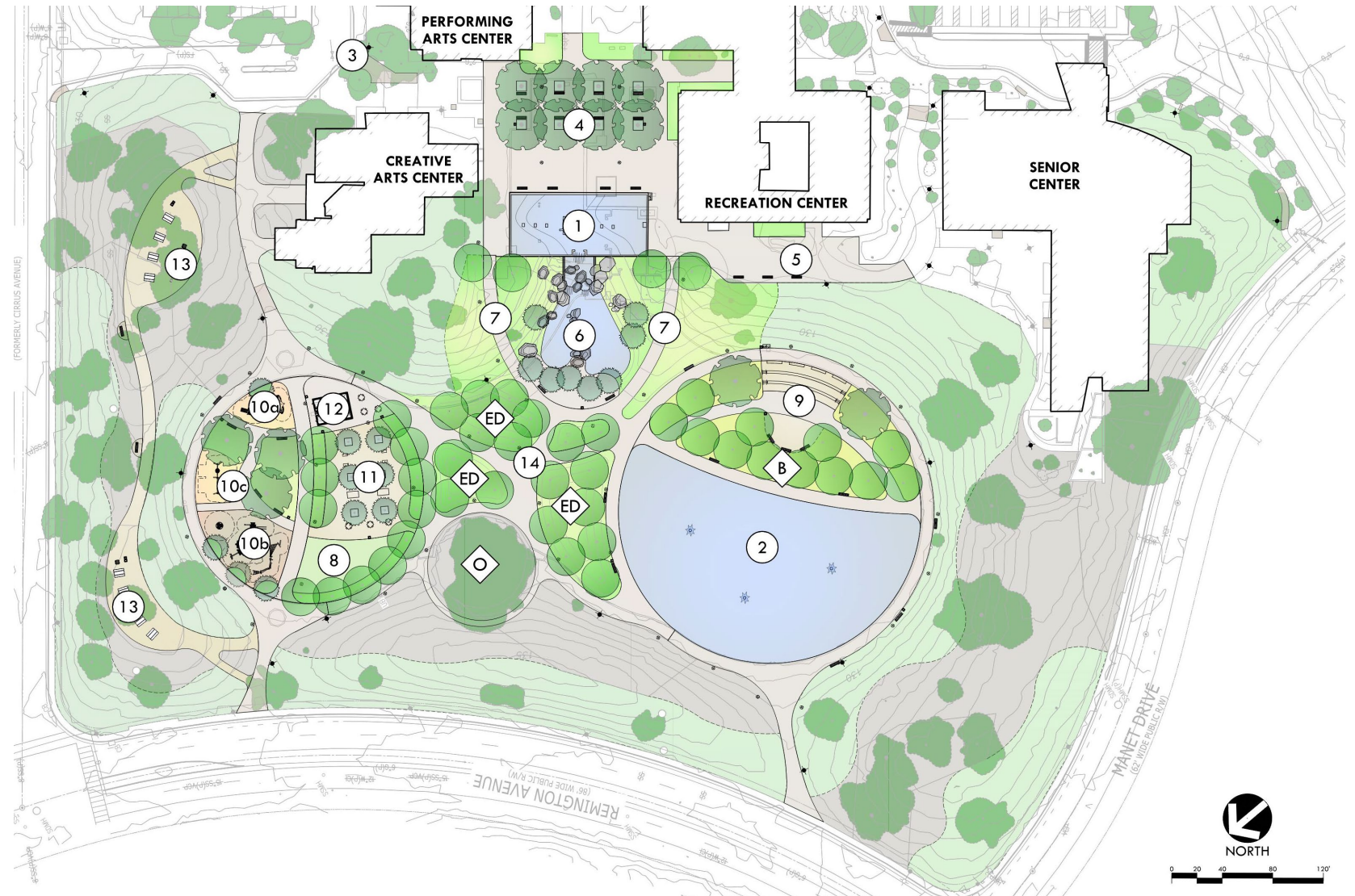
TOTAL REDUCTION: 1010 LF (85%)



Preferred Concept Plan

LEGEND:

- ① UPPER FOUNTAIN (REDUCED BY 50%)
W/ EXISTING MEMORIAL SCULPTURE
- ② LOWER POND (REDUCED BY 60%)
- ③ SITE ADA ACCESSIBILITY IMPROVEMENTS AT
EXISTING PAVING AREAS
- ④ UPPER PLAZA W/ GRID OF SHADE TREES
- ⑤ LOWER PLAZA OVERLOOK W/ BENCHES
- ⑥ FOUNTAIN OUTFALL INTO LOWER STREAM BED W/
BOULDERS AND CASCADING WATER
- ⑦ SLOPED WALK DOWN TO LOWER POND AREA
- ⑧ SYNTHETIC TURF LAWN AREA
- ⑨ INFORMAL SEATING/AMPHITHEATER STYLE SPACE
(110 CAPACITY)
- ⑩a PLAYGROUND AREA "TOT LOT" (AGES 2-5)
- ⑩b PLAYGROUND AREA (AGES 5-12)
- ⑩c PLAYGROUND SWINGS
- ⑪ RECREATION AREA WITH CORNHOLE, TABLE TENNIS,
AND CHESS/CHECKERS TABLES
- ⑫ RESTROOM/MECHANICAL EQUIPMENT BUILDING
- ⑬ BERM TRAIL WITH PICNIC AREAS
- ⑭ INTERNAL WALKWAYS/
POSSIBLE ART DISPLAY AREA
- ED EDUCATIONAL PLANTING AREA/ARBORETUM
- B BIORETENTION AREA
- O EXISTING HERITAGE OAK



Next Steps

- City Review
 - ➔ City Council Review January 2023 (Tentative)
- Construction Drawings – Late 2023
- Bidding – Early 2024
- Construction Phase – Spring 2024-Fall 2025



Staff Recommendation

Alternative 1: Recommend that City Council Approve the Preferred Concept Plan as shown on Attachment 6 of the report.