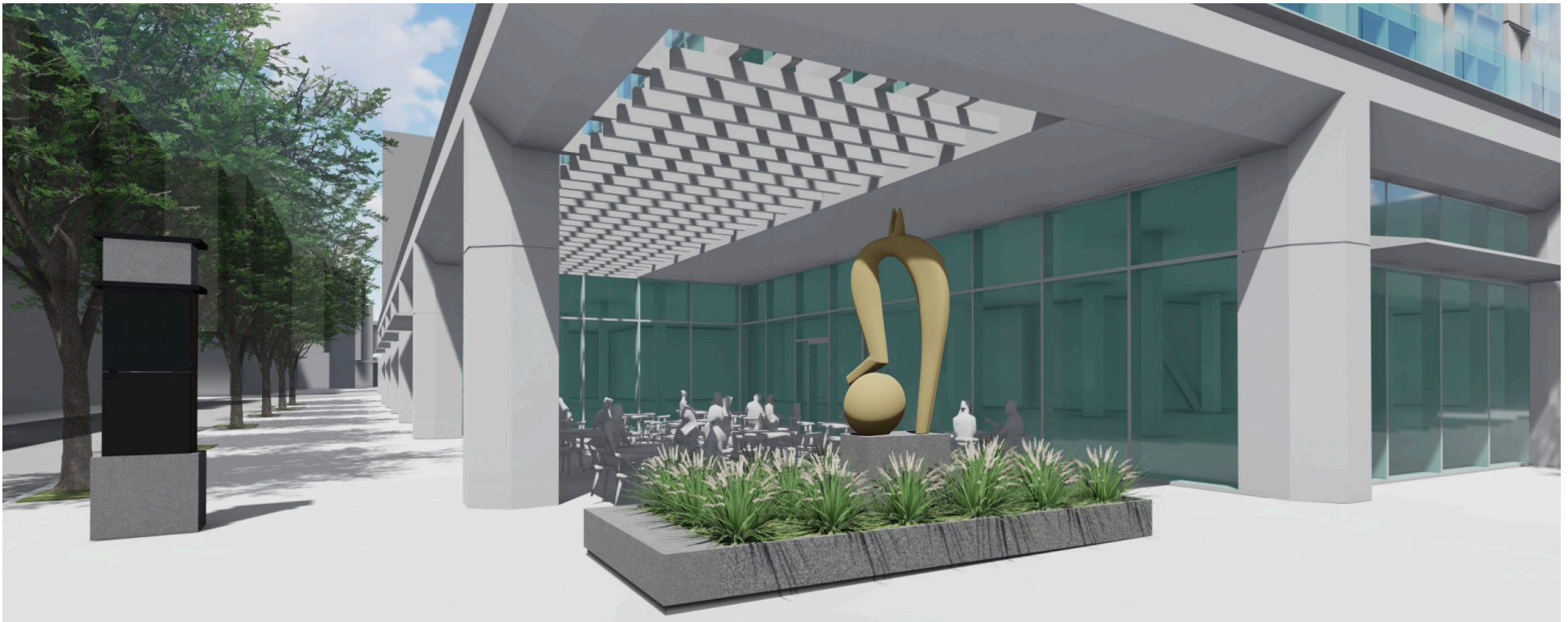


CAMILLE HENROT: *DROPPING THE BALL*  
Artwork Location, Elevation & Setbacks



**Location Details:**

The sculpture will sit in a planter base with a bench that grounds the artwork in the streetscape and brings greenery to the sidewalk environment. It will allow for traffic visibility on the dense corner, and will be very integrated into the downtown streetscape as cars, pedestrians, and

**Distance to Murphy:** 17 ft

**Distance to Washington:** 23 ft



