



Community Center Grounds Renovation Art Project

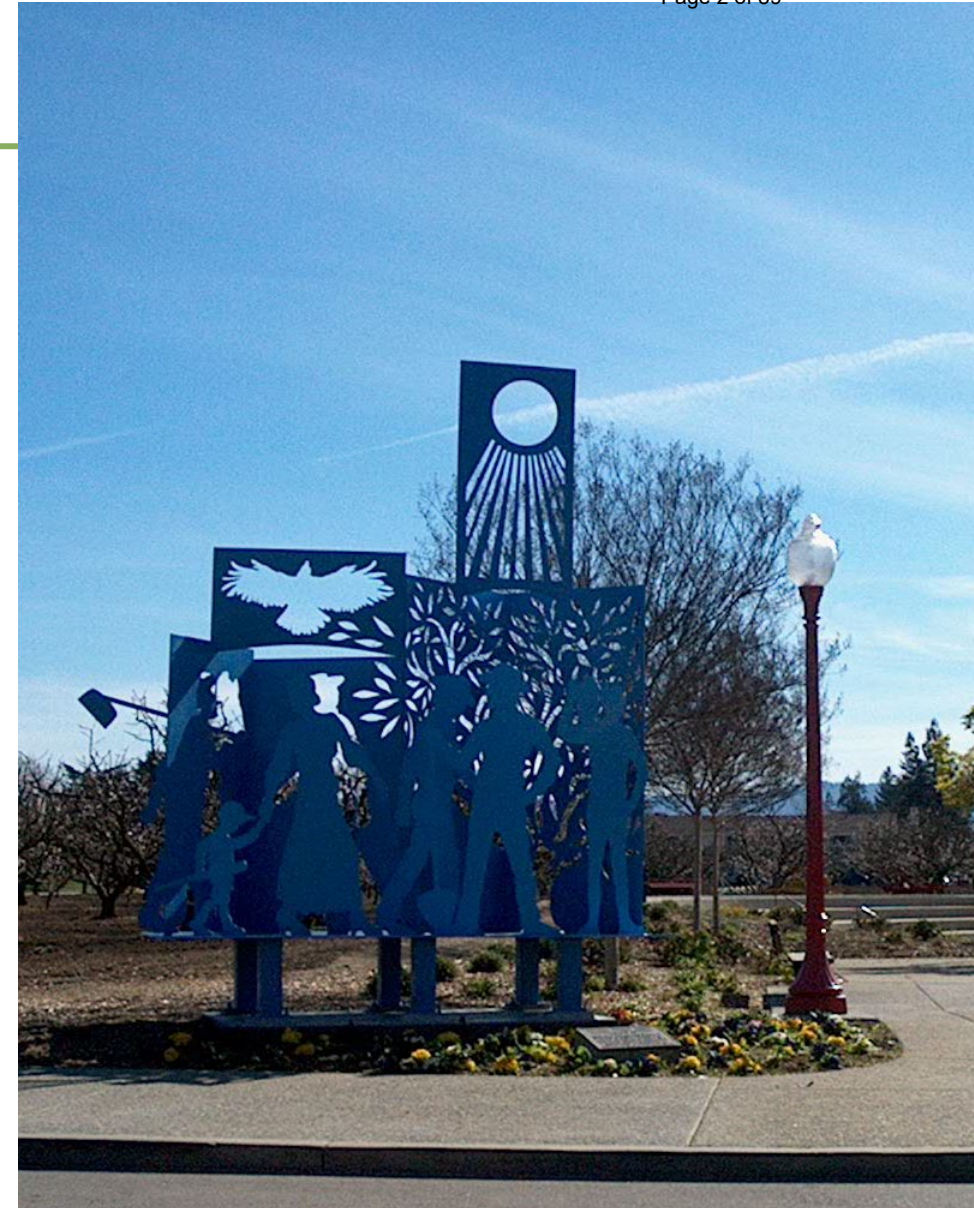
Kristin Dance
Library and Recreation Services
Arts Commission, April 15, 2026



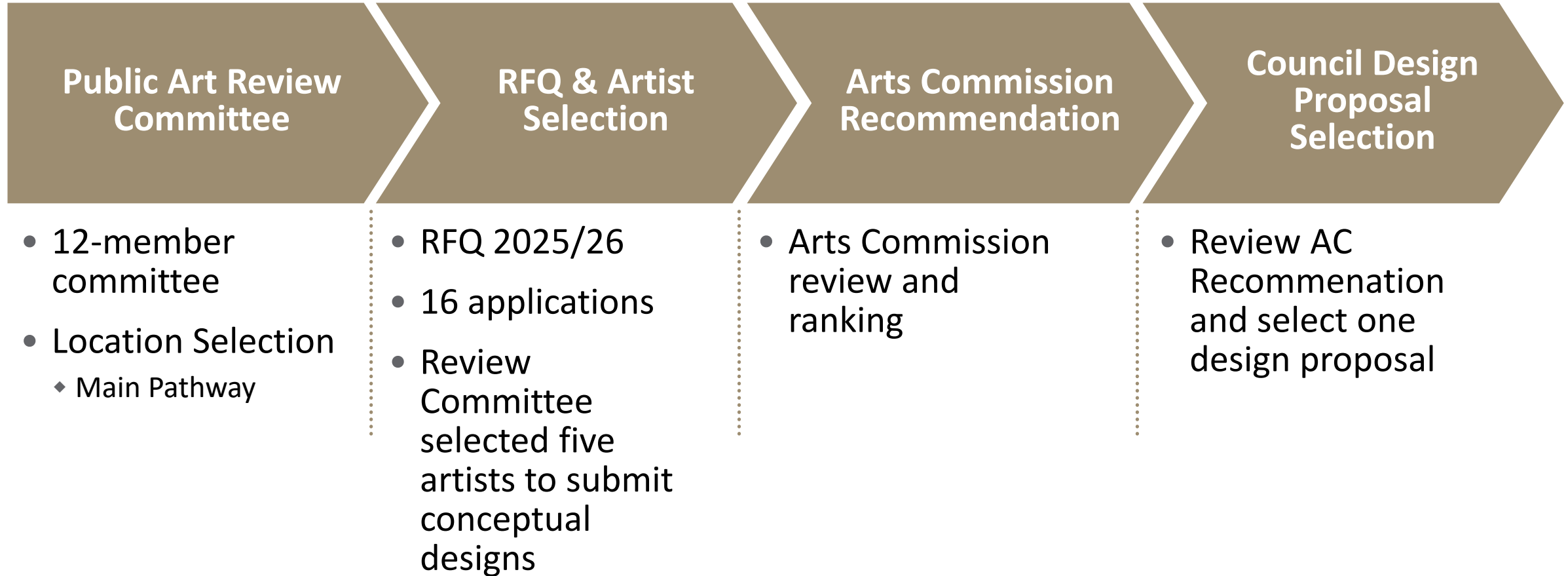
Project Overview

Council Policy 6.4.4 – Art in Public Places

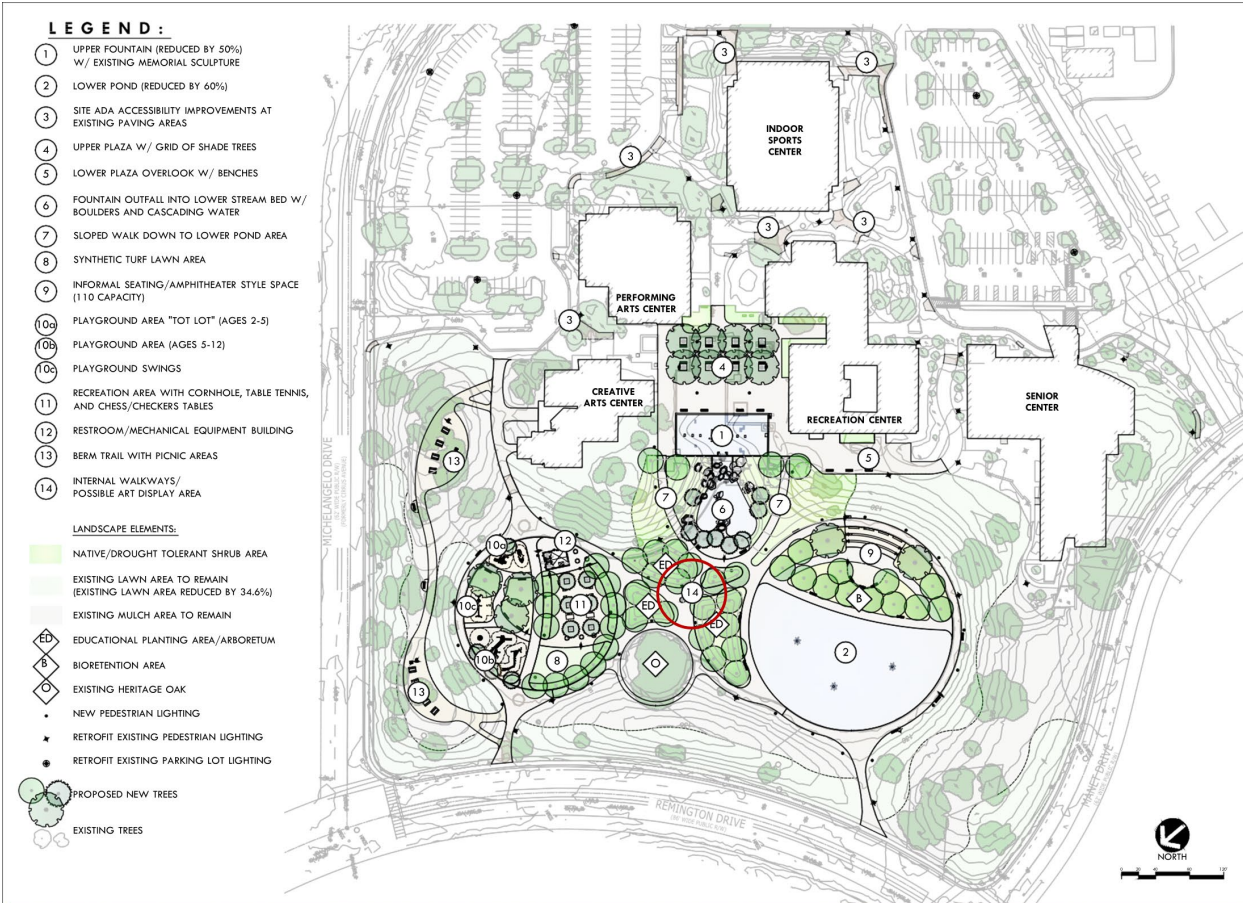
- 1% in public art (\$94,173)
 - ◆ Contingency and artist stipends - \$10,173
 - ◆ Artist commission - \$84,000
- Community Workshop



Process Overview



Selected Location



PREFERRED CONCEPT
 Sunnyvale Community Center
 550 E. Remington Drive
 Sunnyvale, CA 94087

VERDE DESIGN
 LANDSCAPE ARCHITECTURE
 CIVIL ENGINEERING
 SPORT PLANNING & DESIGN
 2455 The Alameda, Ste. 200
 Santa Clara, CA 95050
 TEL: 408.945.7100
 FAX: 408.945.7100
 WWW.VERDEDISIGN.COM



Conceptual Designs



Sijia Chen Studio

Proposal 1 – Sijia Chen Studio

CREATIVE PRINCIPLES

- **Bold color and form as a civic focal point**
- **Narrative through form, light, and shadow**
- **Community-rooted, site-responsive design**
- **A collective identity for Sunnyvale**



Proposal 1 – Sijia Chen Studio



Proposal 1 – Sijia Chen Studio



Proposal 1 – Sijia Chen Studio



Proposal 1 – Sijia Chen Studio

SPECIFICATIONS



12 feet height, 4 feet diameter

Materials:

Stainless steel, fluorocarbon paint, anti-graffiti coating, LED lighting fixtures

Proposal 1 – Sijia Chen Studio

CUTOUT DESIGNS

- All images presented in the perforations of the conceptual renderings for are placeholders and not the final design
- Perforation designs will be finalized through a community engagement program



Flattened view

Proposal 1 – Sijia Chen Studio

Materials

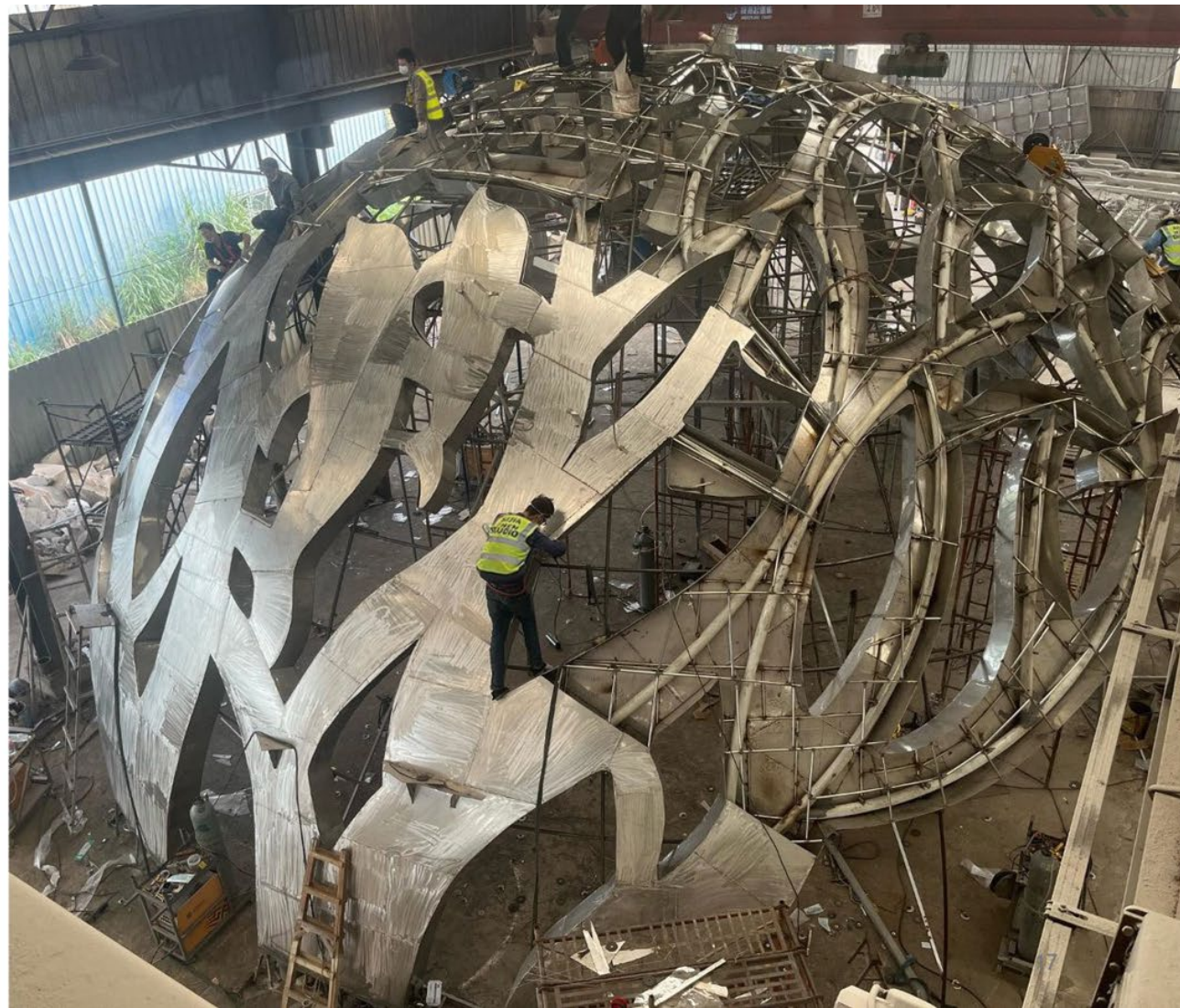
- **Stainless steel structural members and panels**
- **Automotive fluorocarbon paint**
- **UV resistant and anti-graffiti coating**



Proposal 1 – Sijia Chen Studio

Fabrication

- Designed and fabricated by Sijia Chen Studio's in-house team of designers, engineers, and fabricators





Faducci

Proposal 2 – Faducci





Studiofolia

Proposal 3 – Studiofolia



Folding Home

SUNNYVALE COMMUNITY CENTER GROUNDS SCULPTURE

studiofolia

Proposal 3 – Studiofolia

Introduction

James Dinh is a Los Angeles County-based artist and the founder of Studiofolia, a collaborative public art practice dedicated to creating site-specific works that resonate with community memory, identity, and place. With a unique background in both landscape architecture and public health, Dinh brings a multidisciplinary lens to his art.

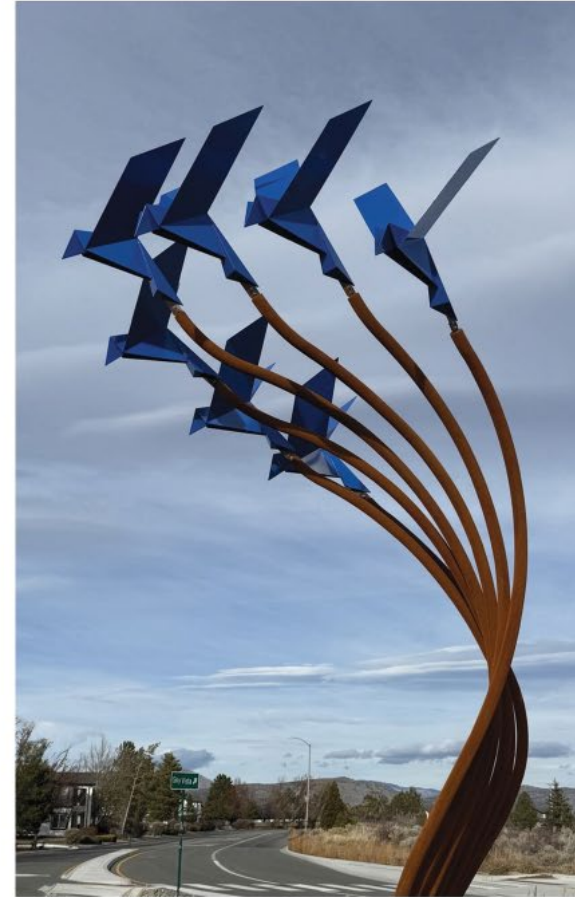
His work centers on exploring the emotional and cultural histories of a site, translating stories into evocative visual languages that foster reflection and connection. Whether honoring collective experiences or elevating overlooked narratives, Dinh’s projects invite viewers to engage with public space in meaningful and transformative ways.



Of Two Lineages - 2017
Little Saigon, Westminster, Calif.



T.I.E. - 2022
College of Education, University of Nebraska, Lincoln



Chur Chur - 2025
North Valleys Regional Park, Reno, Nevada

SUNNYVALE COMMUNITY CENTER GROUNDS SCULPTURE

| ¹ studiofolia

Proposal 3 – Studiofolia

Inspiration

Nearly half of the population of Sunnyvale is originally from another country, making it a culturally rich city within Silicon Valley. Inspired by this fact, the proposed artwork uses the image and symbolism of birds to speak about ideas such as migration, community, and home.

Many seasonally migrating and resident birds make their homes at the ponds at the Sunnyvale Community Center as well as the city's bay shore wetlands.

The sculpture's location near the Community Center's ponds adds to the artwork's meaning and site-specificity.



SUNNYVALE COMMUNITY CENTER GROUNDS SCULPTURE

Proposal 3 – Studiofolia

Design - Folding Home

The artwork uses origami-like bird forms to reference movement and migration as acts of adaptation (folding), arrival, and settlement.

Folding evokes intention, care, transformation, and an embracing quality—all of which reflect Sunnyvale’s identity as a place shaped by human journeys and home-making.

The sculptural birds rest quietly within a field of slender curving reeds. They are supported and sheltered by the landscape, just as communities welcome and shelter their citizens, who in turn care for the places that receive them.



SUNNYVALE COMMUNITY CENTER GROUNDS SCULPTURE

Proposal 3 – Studiofolia

Design

The existing 4-inch-thick concrete pad is not thick enough to structurally anchor a conventional sculpture.

Taking this fact into consideration, the sculpture will be fabricated from lightweight aluminum, with a base plate designed to distribute the sculpture’s weight across a wide area.

How the artwork looks will change depending on where the viewer stands, lending it a dynamism.

The birds and reeds will also move slightly with the wind, adding a kinetic element.

Base plate, 6-7 feet wide
Existing 4-inch-thick 8-foot square concrete pad



Birds range from 12 inches to 18 inches wide

~ 8 ft



SUNNYVALE COMMUNITY CENTER GROUNDS SCULPTURE



Proposal 3 – Studiofolia



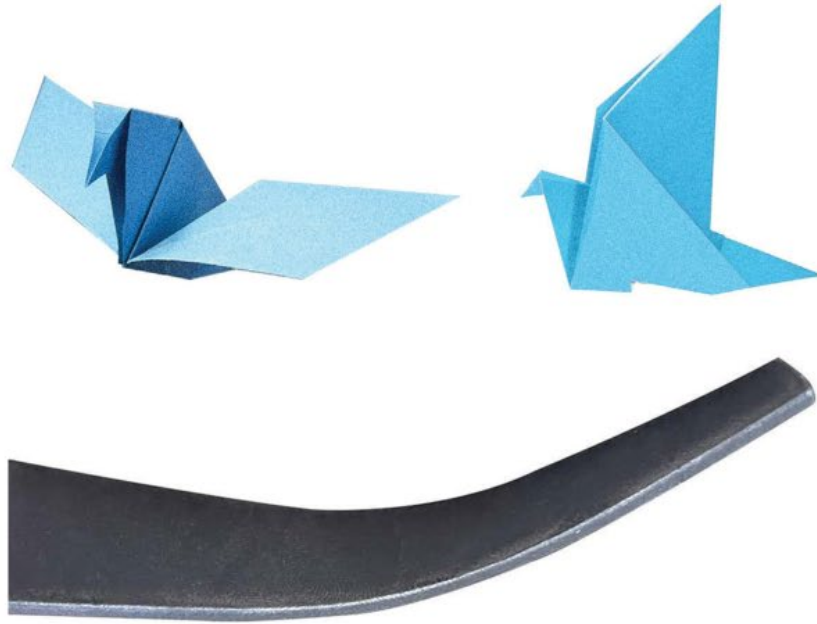
SUNNYVALE COMMUNITY CENTER GROUNDS SCULPTURE

Proposal 3 – Studiofolia

Materials

Alluminum

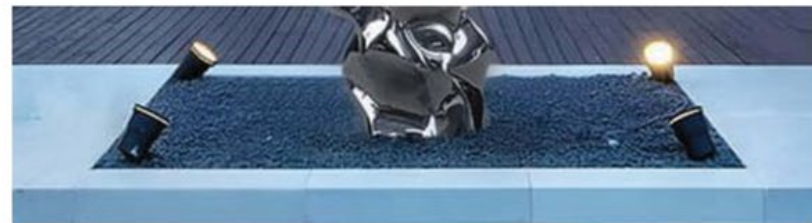
- Birds and reeds fabricated from alluminum—bent and welded
- Light-weight, durable, and does not rust
- Birds—1/4" thick, reeds—3/8" thick, base Plate—3/4" thick
- Birds painted with an industrial-grade powder coat; color TBD
- Reeds to have a natural color with a satin finish



SUNNYVALE COMMUNITY CENTER GROUNDS SCULPTURE

Lighting

- There is a light pole at the site, the brightness of which may lessen the effect of artwork lighting.
- Therefore, lighting is not included in the art budget. However, if desired, the artist can make recommendations for lighting fixtures or use the budget's contingency for lighting.
- The use of 2 standard landscape uplights would be sufficient.





UrbanRock Designs

Proposal 4 – UrbanRock Studio



Retro robot

+



nature & technology

Inspo

Proposal 4 – UrbanRock Studio



Material Site-Specificity

Proposal 4 – UrbanRock Studio

- Striking from afar
- Visceral material
- Intellectually engaging
- Provokes reflection
- Elicits pride

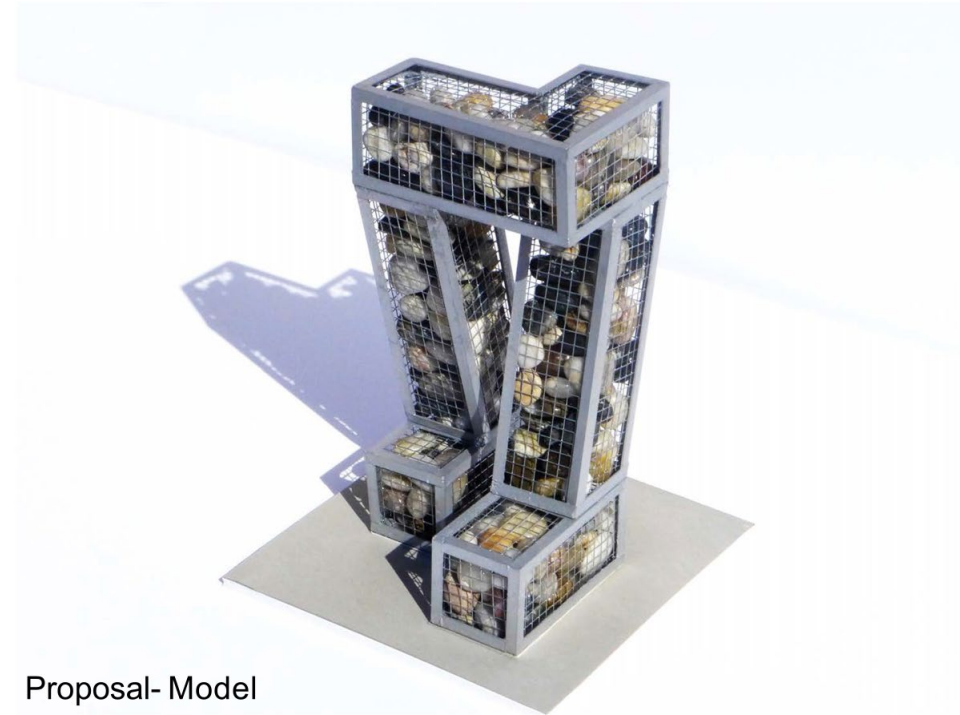
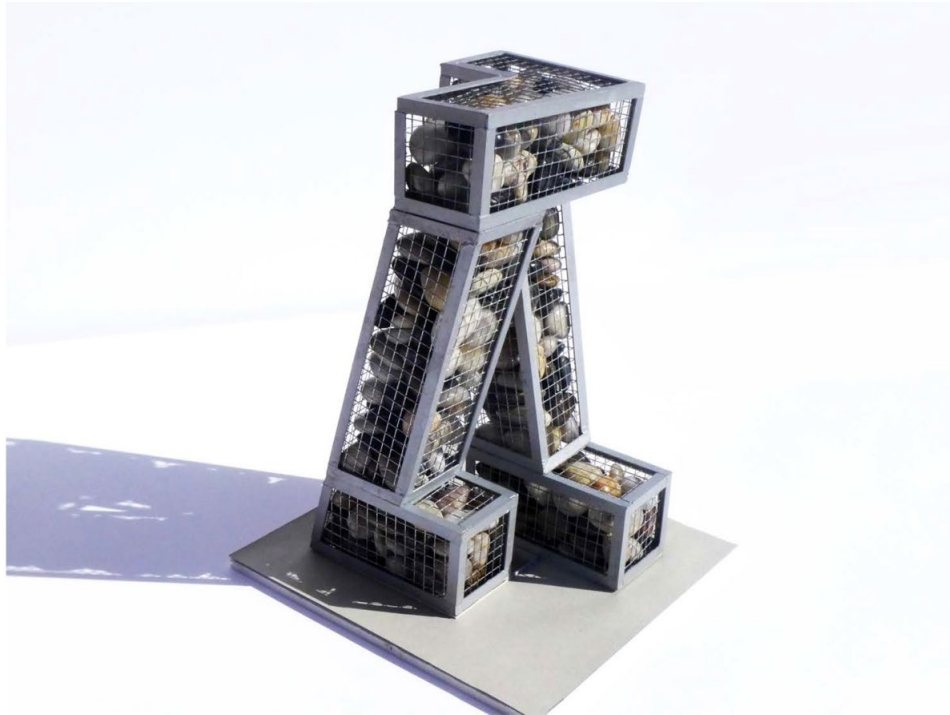
Artwork Qualities

Proposal 4 – UrbanRock Studio



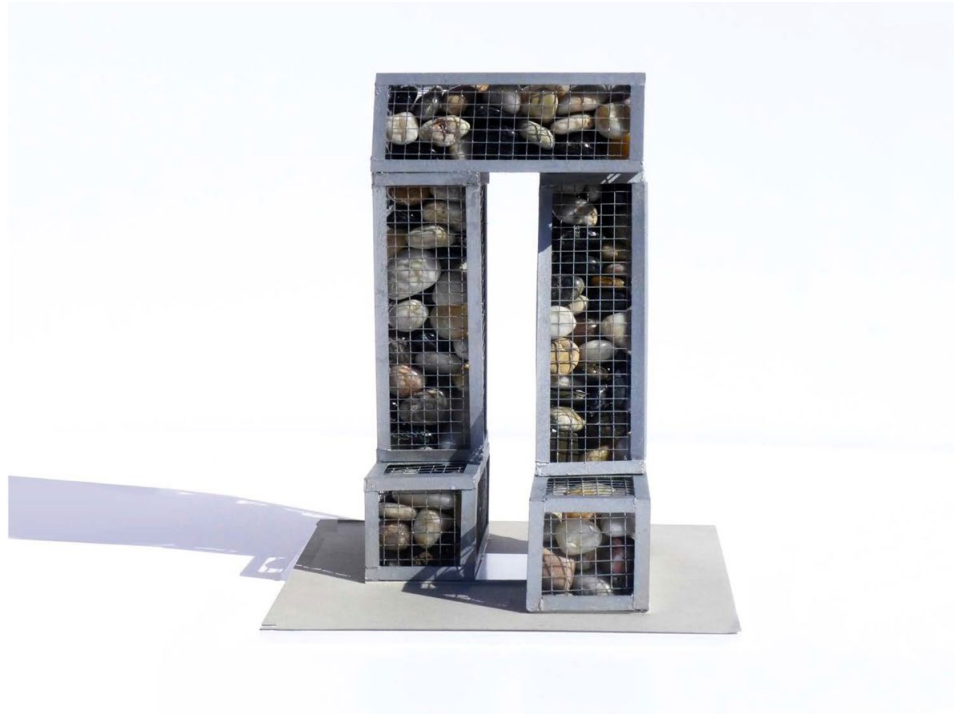
Site Vignette

Proposal 4 – UrbanRock Studio



Proposal- Model

Proposal 4 – UrbanRock Studio



Proposal 4 – UrbanRock Studio



Proposal 4 – UrbanRock Studio

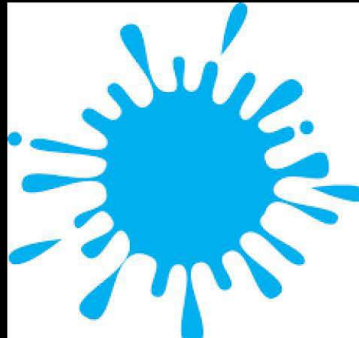




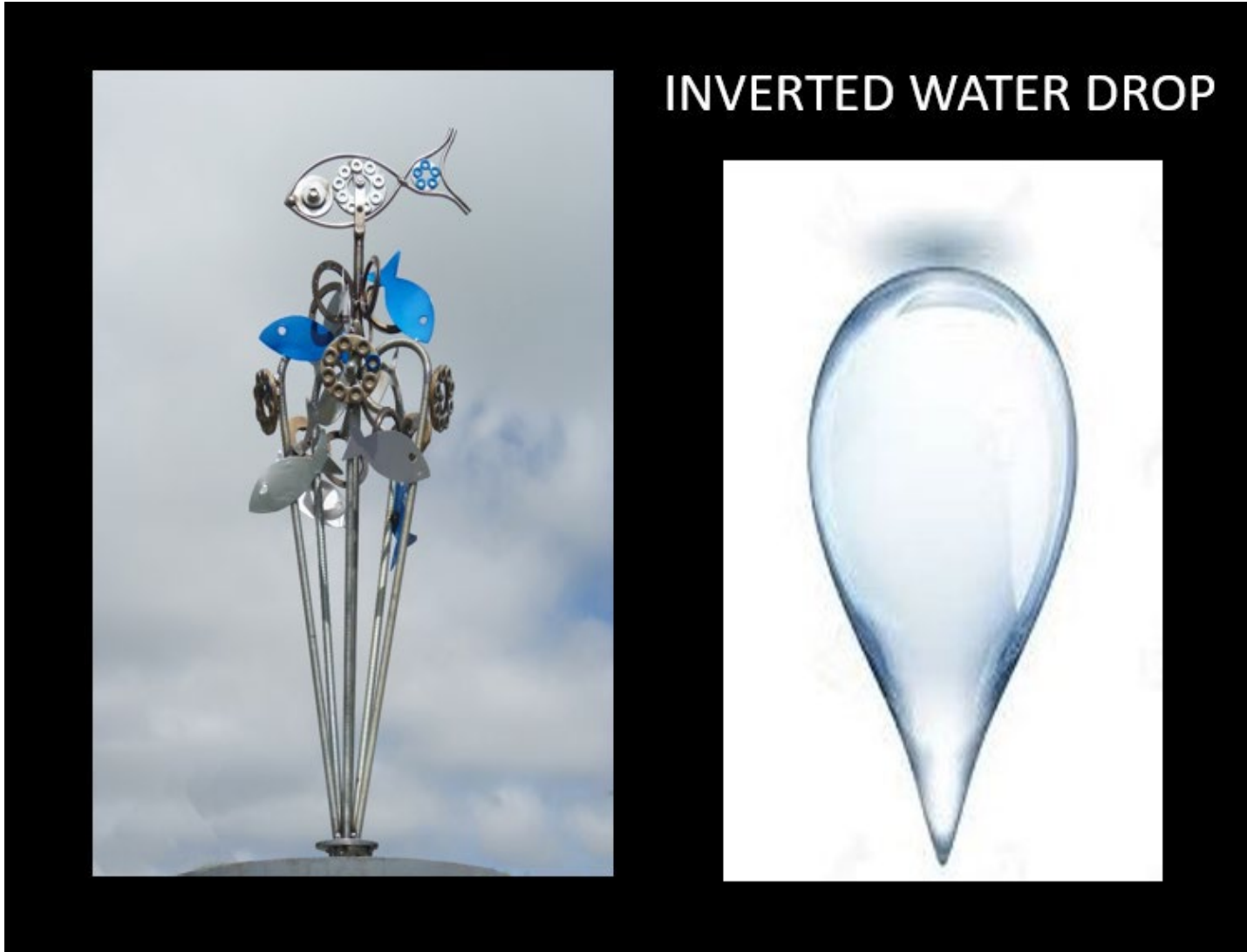
Patricia Vader

Proposal 5 – Patricia Vader

- water drop
- wind vane
- school of fish
- splash
- bicycle



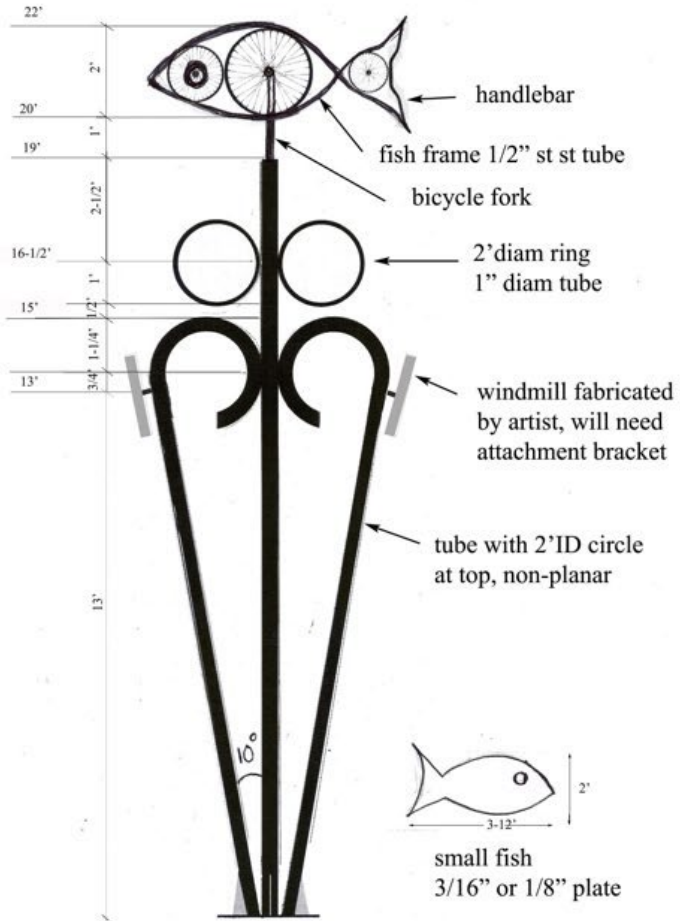
Proposal 5 – Patricia Vader



Proposal 5 – Patricia Vader



Proposal 5 – Patricia Vader





Questions?