



Sunnyvale

# Caltrain Station Area Preferential Parking Zones (21-0184)

Dennis Ng

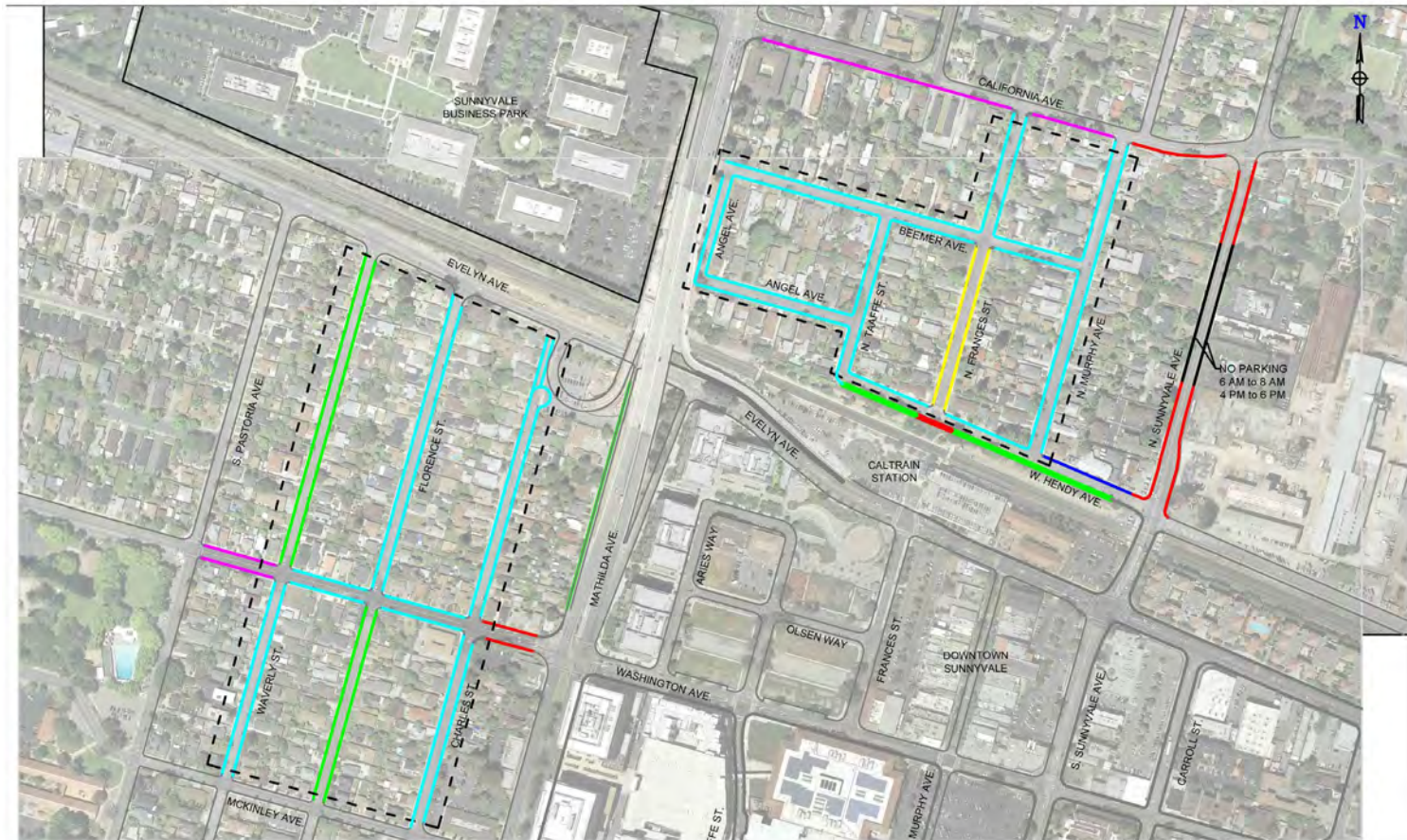
City Council, March 30, 2021

# Caltrain Station Area Preferential Parking

- Sunnyvale Municipal Code (SMC) 10.26 – Preferential Parking on Residential Streets
  - ◆ City Council may designate areas by ordinance as preferential parking zones
- In 2009, City Council passed an ordinance designating certain streets with 7-hour time limits near the Sunnyvale Caltrain Station as a preferential parking zone (Ord. 2898-09)



# Current Parking Restrictions – Caltrain Area



- No Restrictions
- No Parking/Stopping
- 2 Hour Time Limit Parking
- 3 Hour Time Limit Parking
- 4 Hour Time Limit Parking
- 7 Hour Time Limit Parking
- - - Caltrain Station Preferential Permit Parking Zone

# Current Parking Restrictions – North of Caltrain



- |   |                           |   |   |
|---|---------------------------|---|---|
|  | No Restrictions           |  | 4 Hour Time Limit Parking                         |
|  | No Parking/Stopping       |  | 7 Hour Time Limit Parking                         |
|  | 2 Hour Time Limit Parking |  | No Parking 6AM to 8AM and 4PM to 6PM              |
|  | 3 Hour Time Limit Parking |  | Caltrain Station Preferential Permit Parking Zone |

# Timeline – Neighborhood Request to Change On-street Parking from 7-hr to 2-hr

- Nov. 2019 – City receives initial petition
- Feb. 2020 – City staff hold neighborhood meeting and collect parking data
- Spring/Summer 2020 – City staff survey neighborhood on parking preference
- Fall/Winter 2020 – Data evaluation and development of recommendations



# Parking Study Results



- No Restrictions
- No Parking/Stopping
- 2 Hour Time Limit Parking
- 3 Hour Time Limit Parking

- 4 Hour Time Limit Parking
- 7 Hour Time Limit Parking
- No Parking 6AM to 8AM and 4PM to 6PM
- Caltrain Station Preferential Permit Parking Zone

**PEAK PARKING DEMAND (11am) - February 2020**  
 Vehicles Parked / % Occupied - Per Segment  
 Overall Vehicles Parked - 214  
 Overall Total Parking Spaces - 307  
 Overall Percent Occupied - 70 %

# Caltrain Station Area - Alternatives



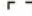
1. Introduce an Ordinance Repealing Ordinance No. 2898-09 and designating certain streets in the area of the Caltrain Station as Preferential Parking Zones.
2. Introduce an Ordinance Repealing Ordinance No. 2898-09 and designating certain streets in the area of the Caltrain Station as Preferential Parking Zones, with modifications.
3. Do not repeal Ordinance No. 2898-09 establishing the Caltrain Station Preferential Parking Zone.



# Staff Recommendation and Proposed Parking Restrictions

Alt. 1: Introduce an Ordinance repealing Ordinance No. 2898-09 and designating certain streets in the area of the Caltrain Station as Preferential Parking Zones.



- |   |   |
|---|---|
|  No Restrictions           |  4 Hour Time Limit Parking                         |
|  No Parking/Stopping       |  No Parking 6AM to 8AM and 4PM to 6PM              |
|  2 Hour Time Limit Parking |  Caltrain Station Preferential Permit Parking Zone |
|  3 Hour Time Limit Parking |   |



# Caltrain Station Area – Preferential Parking Zone

---

Questions?