

REVISIONS

△ OWNER/CITY REVISIONS
d/B/82

△ 14' W 1" H 4" S 3-10-90

**LAWRENCE
EXPRESSWAY
COMMERCIAL
CENTER
SUNNYVALE - CALIF.**

LRS ASSOCIATES
ARCHITECTURE AND PLANNING
1283 OAKMEAD PARKWAY, SUNNYVALE
CALIFORNIA 94086 (408) 773-1700

ARCHITECT

DATE 8/1/83

SCALE 1/20" = 1'-0"

SHEET

PROJECT NO. K-371
14793

DRAWN

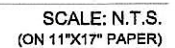
TS

A1

OF 1 SHEETS

APPROVED FOR CONSTRUCTION





Owner: Michele Liu
 Drafter: David Lam
 500 Lawrence Expressway, Suite H
 Sunnyvale, CA 94085