



Use a Bicycle Box to Make a Left Turn

A bicycle box offers a safer and more comfortable space for bicyclists. We're adding them at intersections in Sunnyvale.



How it Works

- 1 From the bike lane on a green light, ride into the bicycle box on the other side of the road.
 - 2 Turn your bike to face the direction you want to go and wait for the next green light.
 - 3 When the light turns green, look in all directions before riding forward to complete the left turn.
-  Confident bicyclists can still use the left turn lane to complete a left turn.
 -  Vehicles are not permitted to turn right on a red light when a bicycle box is present



Sunnyvale

Printed on recycled paper • July/August 2025



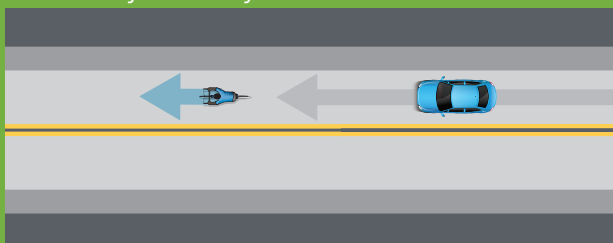
Watch the
Bicycle Box Video

How to Share the Road with Bicyclists

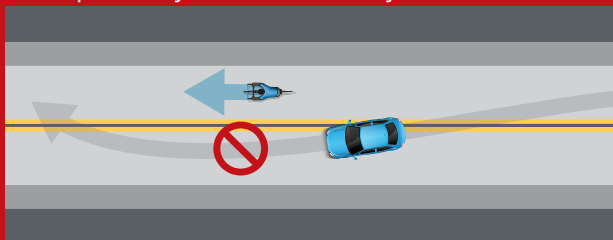
Look for these road signs:



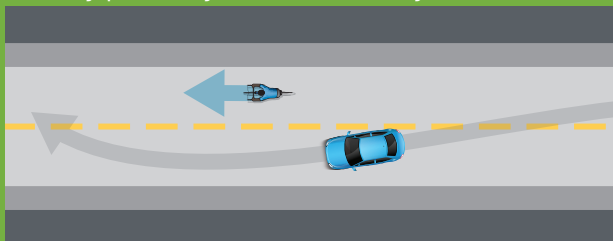
Bicyclists may use full lane



Do not pass bicyclists on double yellow line



Drivers may pass bicyclists on broken yellow line



For information about transportation and traffic safety in Sunnyvale, scan the QR code or search "Traffic Safety" at [Sunnyvale.ca.gov](https://www.sunnyvale.ca.gov).