



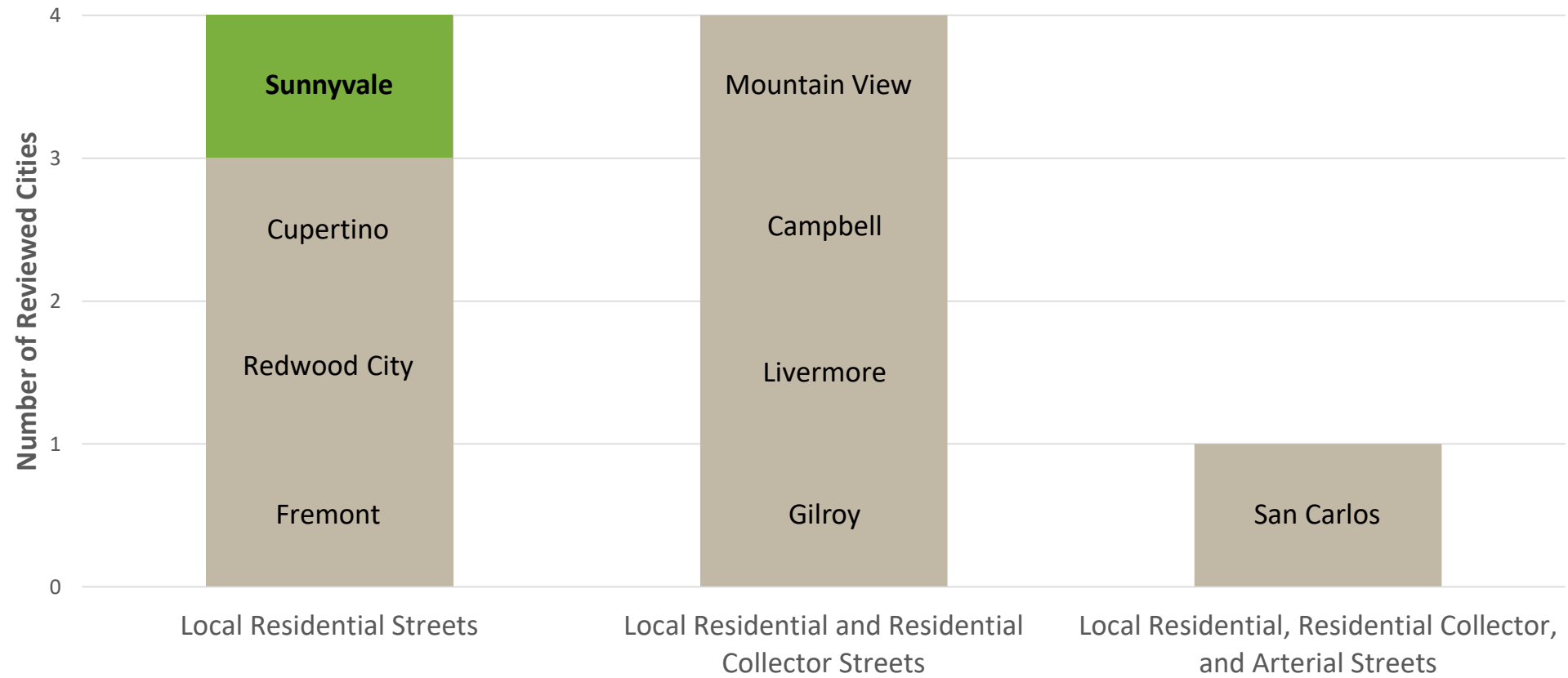
# Comparison of Traffic Calming Program in Comparable Cities

# Review of Neighborhood Traffic Calming Programs

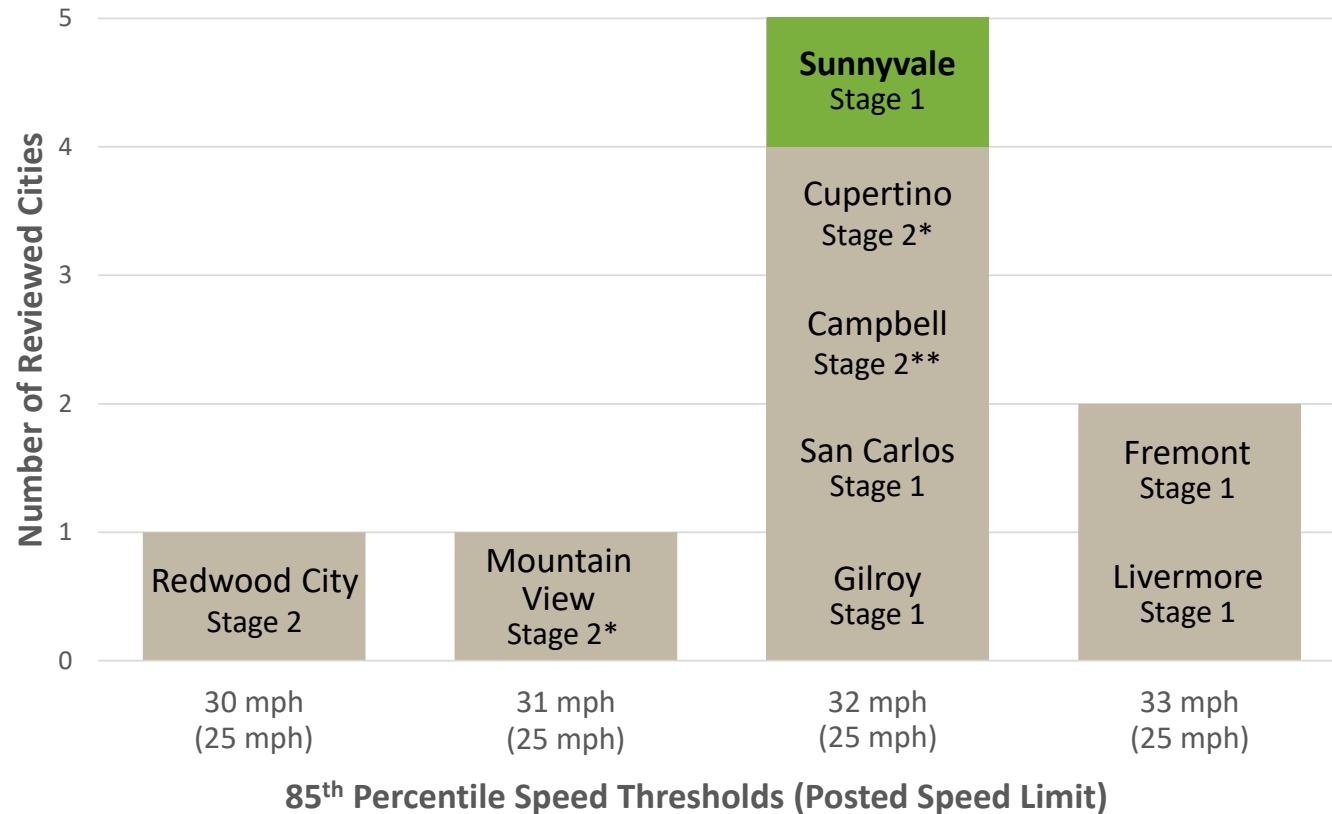
- Reviewed recently adopted/modified NTCP in 8 comparable cities within the Bay Area
  - Mountain View
  - Cupertino
  - Campbell
  - Redwood City
  - Fremont
  - San Carlos
  - Livermore
  - Gilroy



## Qualifying Criteria – Roadway Classification



# Qualifying Criteria – 85<sup>th</sup> Percentile Speed (Local Residential Streets)

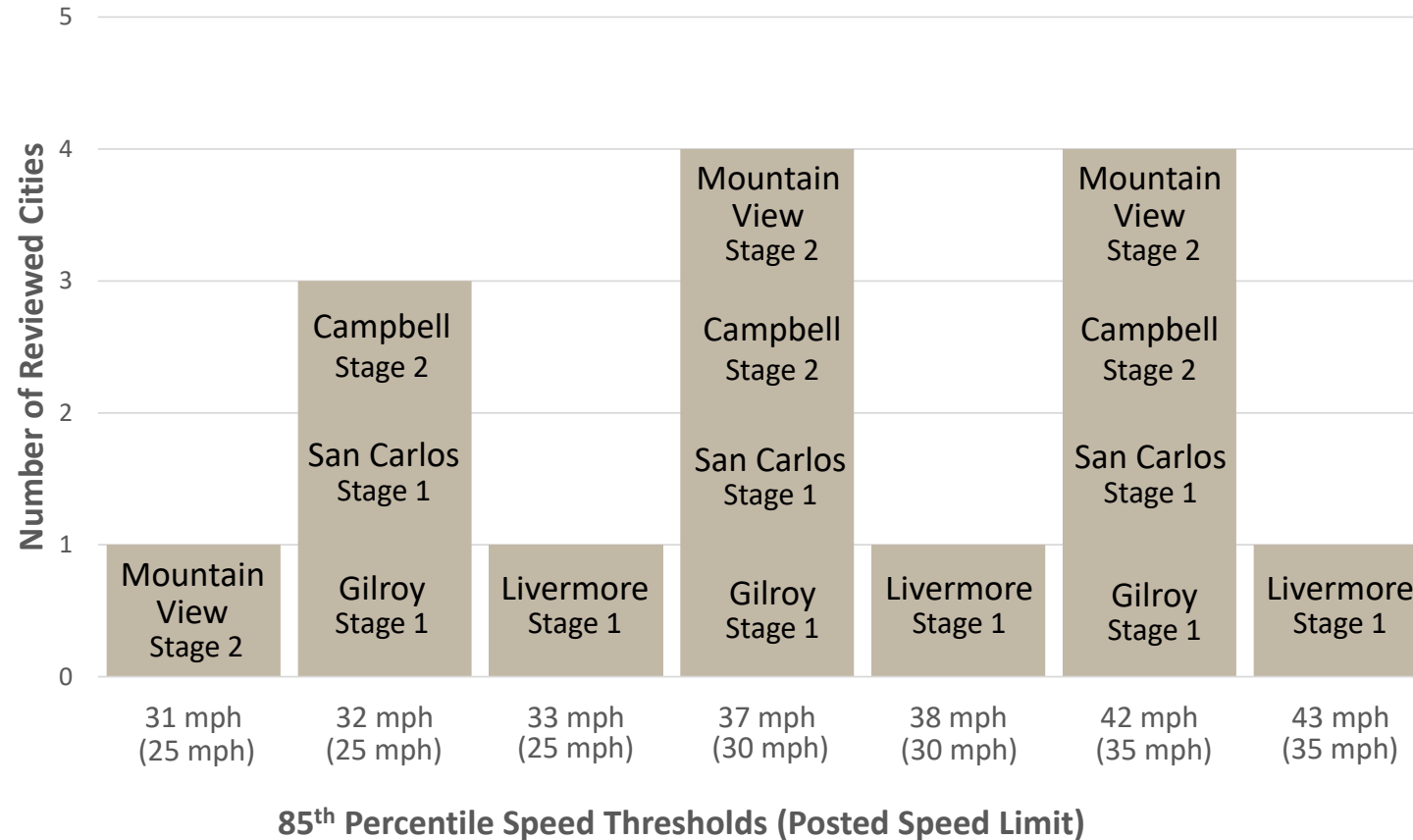


Sunnyvale - or  
95<sup>th</sup> percentile speed >  
35 mph

\*Mountain View and  
Cupertino use 30 mph as  
threshold in school zones

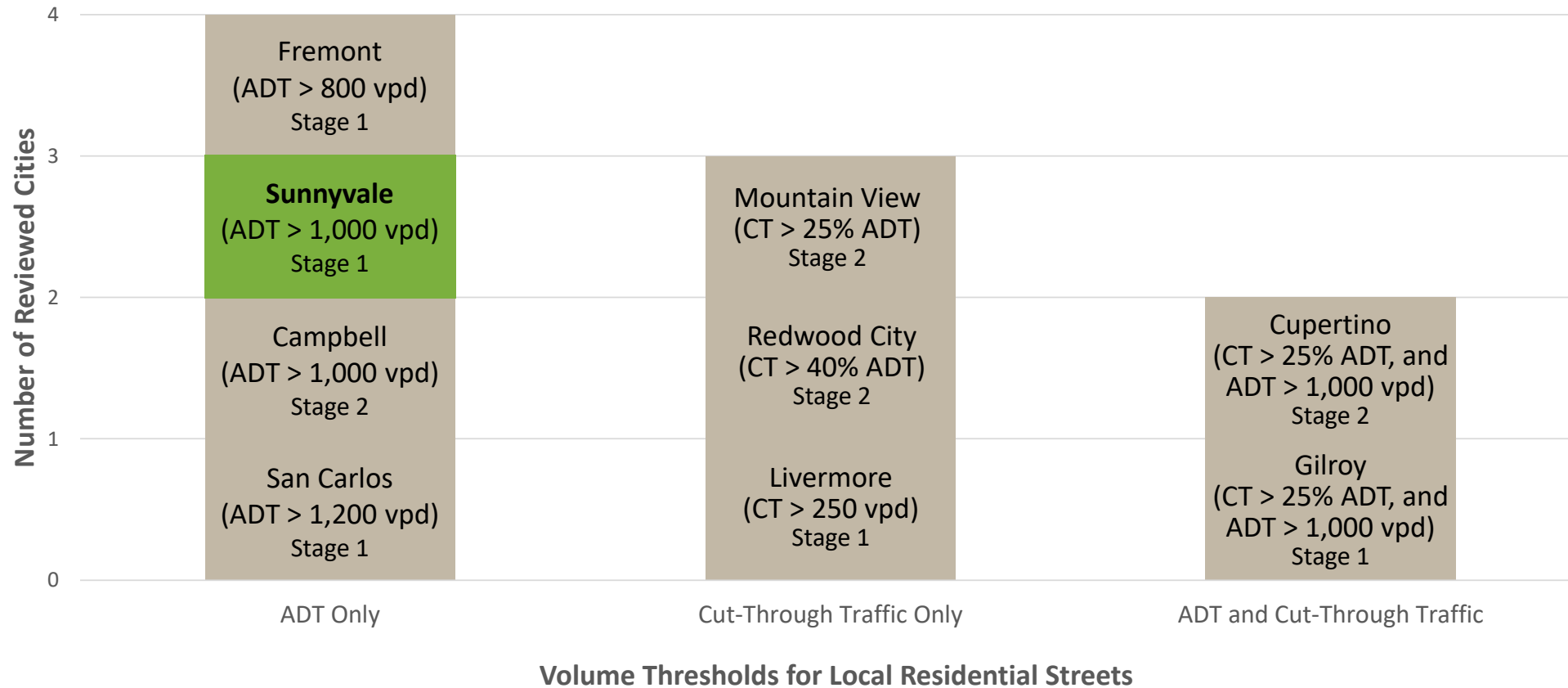
\*\* Campbell requires  
both speed and volume  
to exceed the threshold

# Qualifying Criteria – 85<sup>th</sup> Percentile Speed (Residential Collector Streets)



- Mountain View – or 150 vehicles with speed > 85<sup>th</sup> percentile per day
- San Carlos - uses same thresholds on Arterial Streets
- Gilroy - or 70% traffic exceeds posted speed limit

## Qualifying Criteria – Volume (Local Residential Streets)



## Qualifying Criteria – Volume (Residential Collector Streets)



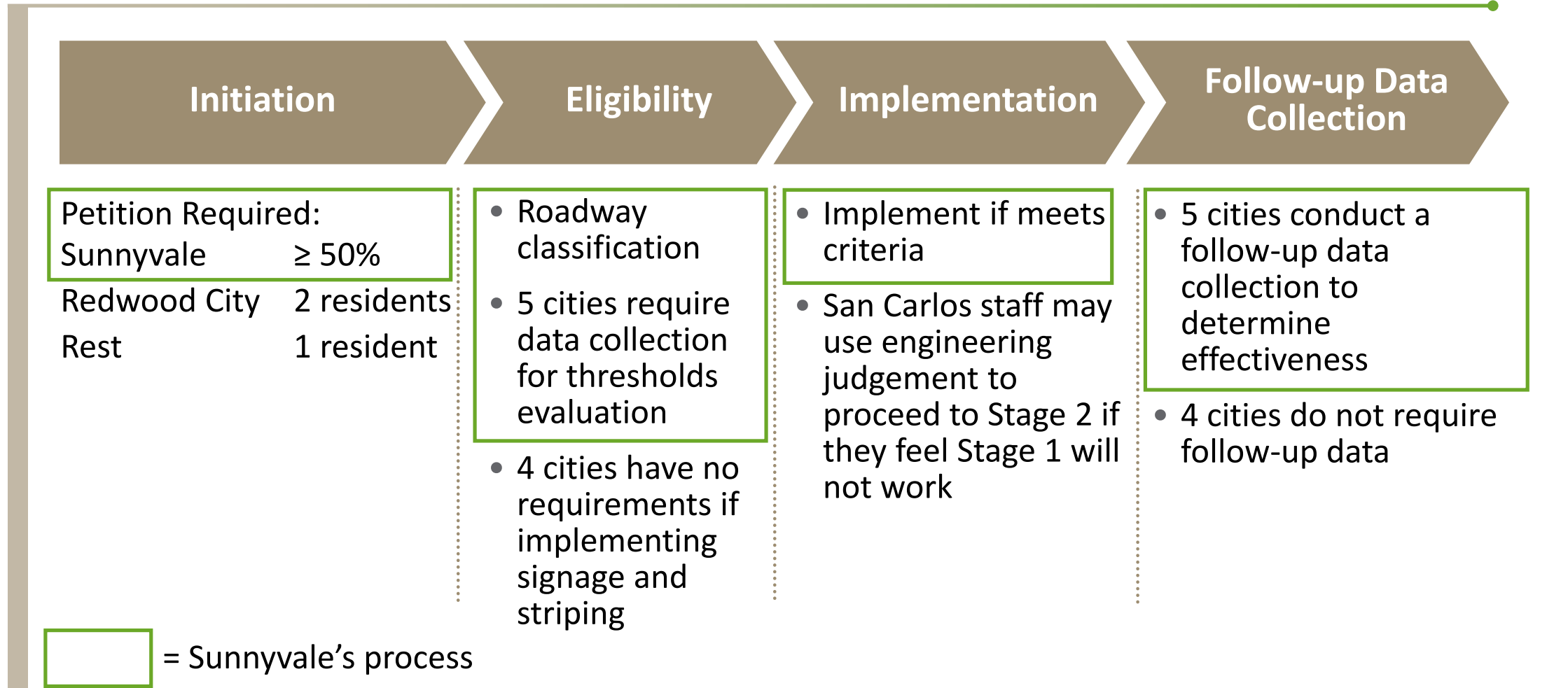
- San Carlos uses ADT > 13,000 vpd as threshold for Arterial Streets
- Gilroy only uses speed threshold for Residential Collector Streets

# Traffic Calming Measures Included in Reviewed City's NTCPs

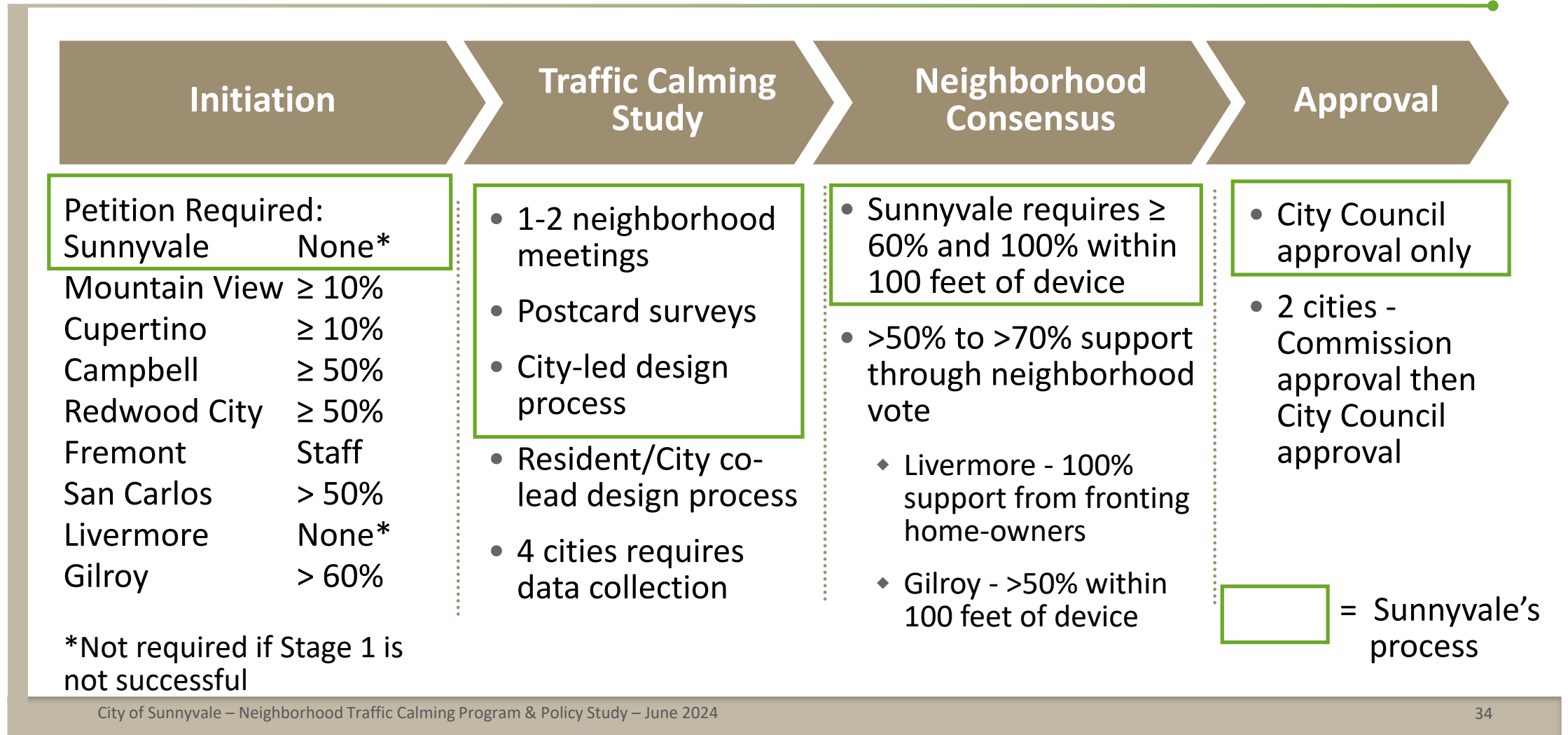
Measure	Sunnyvale	Mountain View	Cupertino	Campbell	Redwood City	Fremont	San Carlos	Livermore	Gilroy
<b>Non-Physical Measures (Stage 1)</b>									
Radar Speed Trailer Deployment	X	X	X	X	X	X	X	X	X
Traffic Enforcement Action	X			X	X	X	X	X	X
Traffic Signing and Pavement Marker	X	X	X	X	X	X	X	X	X
Community Outreach/Education				X		X	X	X	X
<b>Physical Measures (Stage 2)</b>									
<b>Vertical Deflection</b>									
Speed Hump	X	X	X	X	X		X		
Speed Cushion/Lump	X					X	X	X	X
Speed Table/Raised Crosswalk	X	X	X		X	X	X	X	
Raised Intersection		X							
<b>Horizontal deflection</b>									
Traffic Circle	X	X	X	X	X	X	X	X	X
Roundabout	X	X	X				X	X	X
<b>Street Width Reduction</b>									
Curb Extension/Choker/Chicane	X	X	X	X	X	X	X	X	X
Median Island	X	X	X	X	X	X	X	X	X
<b>Routing Restriction</b>									
Median Barrier, Forced Turn Island, Barrier, Channelization	X	X			X		X		
Diagonal Diverter	X	X			X		X		
One-Way Street	X	X					X		
One-Way Choker, Half-Closure or Semi-Diverter	X	X					X		
Street Closure and Cul-de-sac	X	X							
Woonerf	X	X							



## Comparison of Stage 1 Measures Implementation Process



## Comparison of Stage 2 Measures Implementation Process



## Comparison of Stage 2 Measures Implementation Process (cont'd)

