



Sunnyvale City Council
April 7, 2026

2020-2025

COMMUNITY PLAN

TO

END HOMELESSNESS

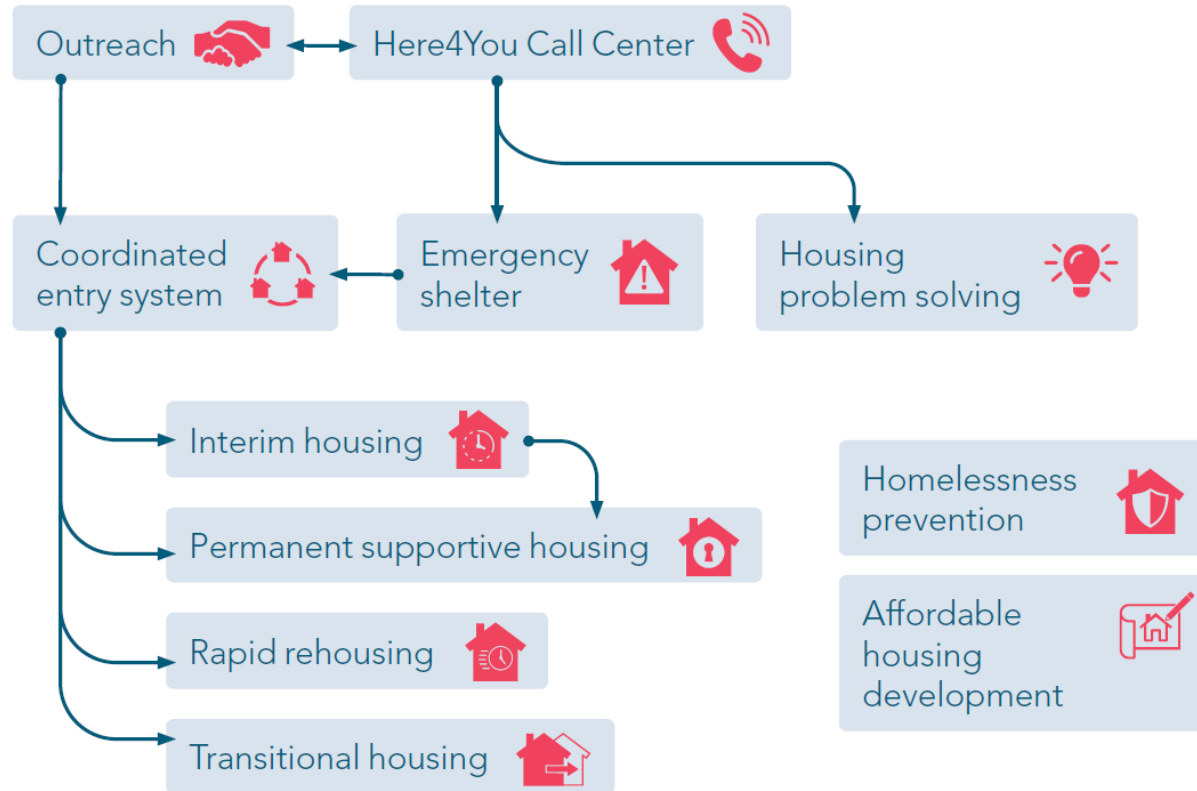
UPDATE

AGENDA



- Progress from the 2020-2025 Community Plan to End Homelessness
- Sunnyvale Households Data
- Developing the Next 5-Year Community Plan to End Homelessness
- Next Steps

SUPPORTIVE HOUSING SYSTEM MAP IN SANTA CLARA COUNTY



ABOUT THE CONTINUUM OF CARE

- Broad group of stakeholders dedicated to ending and preventing homelessness
- Ensure a community-wide implementation of efforts & programmatic and systemic effectiveness
- County of Santa Clara serves as the lead agency



Collective Impact



...and many more!

**SANTA CLARA COUNTY COMMUNITY PLAN
TO END HOMELESSNESS**

**Progress from the
2020-2025
Community Plan to
End Homelessness**



2020-2025 COMMUNITY PLAN PROGRESS

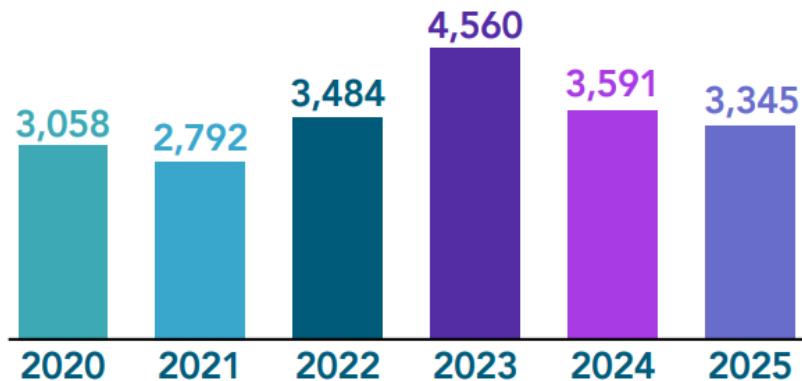
2025 GOAL:
20,000 People
Housed

GOAL ACHIEVED!



20,830
People Housed

PEOPLE HOUSED BY YEAR



2020-2025 COMMUNITY PLAN PROGRESS

2025 GOAL:
20,000 People
Housed

GOAL ACHIEVED!



KEY SUBPOPULATIONS



47%
Chronically
Homeless**



26%
Families
with Children



13%
Young Adults
(18-24)



15%
Veterans



9%
Seniors
(65+)

*Based on number of households housed

**A person who has experienced homelessness for more than a year and has a disabling condition

Temporary Housing & Shelter Capacity Increased by 82%

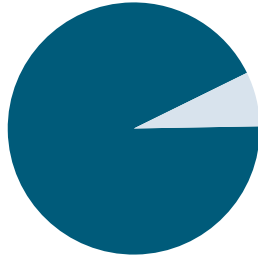
Temporary Housing and Shelter Capacity (units)



27,037 people placed in temporary housing or shelter between 2020 and 2025

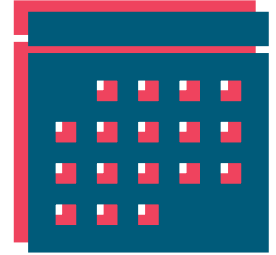
38,060 People Received Homelessness Prevention Assistance

93% of families remained stably housed while receiving services.



ONE YEAR LATER

→
Only 5% of households became homeless.



Homelessness Prevention Capacity

2,693 households

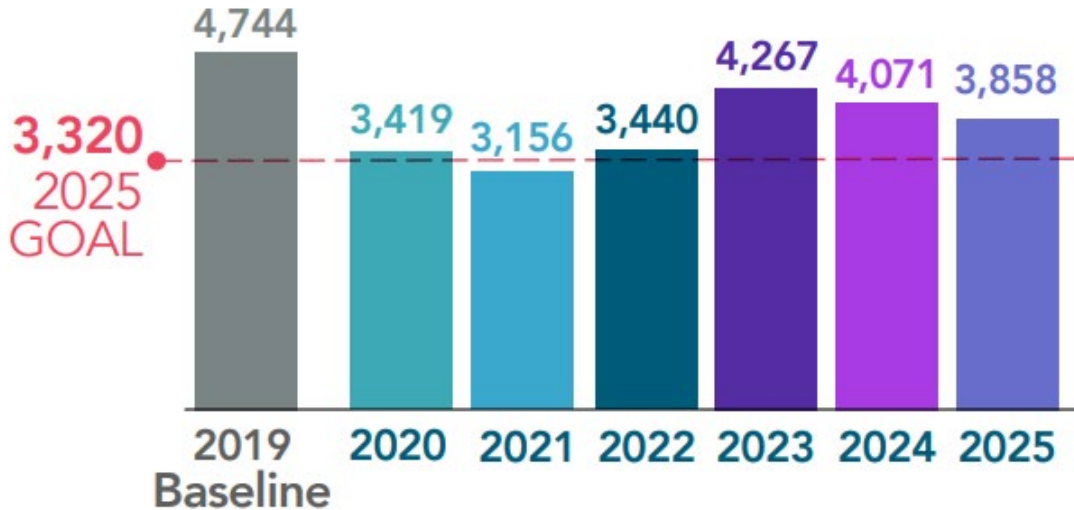
↑ **75% since Jan. 1, 2020**

2025 GOAL: 2,500 households

GOAL ACHIEVED!

19% Decrease in New Households Becoming Homeless since 2019

NEW HOUSEHOLDS ENTERING HOMELESSNESS BY YEAR



IN 2025

For every **1** household housed another **1.9** become homeless

IN 2019

For every **1** household housed another **2.5** become homeless

2020-2025 Community Plan Progress

Sunnyvale Households



2020-2025 Community Plan Progress: Sunnyvale Households

In 2025, for every **1** household housed, another **1.5** became homeless.

1,364 People Housed

Across 788 households, ~7% of total

2,667 People Placed in Temporary Housing and Shelter

Across 1,792 households, ~10% of total

3,501 People Received Homelessness Prevention Assistance

Across 1,644 households, ~9% of total

HOW ARE PEOPLE FROM SUNNYVALE BENEFITING FROM SERVICES?

Sunnyvale-Affiliated means:

- Address in Sunnyvale
- Lived in Sunnyvale prior to becoming homeless
- Works in Sunnyvale
- Kids go to school in Sunnyvale
- Spend most of time in Sunnyvale

Table 1: Sunnyvale-Affiliated Households Receiving Supportive Housing System Services in 2025

Program-Type	Total Households Served	Sunnyvale-Affiliated Households
Permanent Supportive Housing	4,556	247
Rapid Rehousing	1,679	170
Emergency Shelter	5,102	414
Transitional Housing	529	24
Street Outreach	5,194	326
Safe Parking	550	50
Homelessness Prevention	3,121	365
Housing Problem Solving	4,530	287
Services Only	8,944	656

Estimated Housing Investments For Sunnyvale Households in 2025

Program Type	Estimated Annual Cost Per Household	Households Affiliated with Sunnyvale in 2025	Estimated Annual Funding for Households Affiliated with Sunnyvale
Permanent Supportive Housing	\$37,380	247	\$9,232,860
Rapid Rehousing	\$29,250	170	\$4,972,500
Homelessness Prevention	\$15,500	365	\$5,657,500
		Total	\$19,862,860

*Note: Sunnyvale-affiliated households also receive funding to support their housing stability through the Housing Problem Solving program.

Additional Partnerships in Sunnyvale



Affordable Housing Development

Total: \$31,700,000

Orchard Gardens - \$16.5 million in Measure A Affordable Housing Bond Funds

Ira D Hall - \$11.2 million from Affordable Housing Bond and No Place Like Home funds

The Meridian - \$4 million from I/DD housing funds



Supportive Housing Services

FY 25-26: ~\$1,100,000

The Housing Authority provides rental subsidies and the County funds supportive services for residents at **Onizuka Crossings** and **Parkside Studios** in Sunnyvale as part of the scattered site PSH program

The County also funds supportive services at **Fair Oaks Plaza** and **Ira D Hall**, and has committed to funding supportive services at **Orchard Gardens**



Temporary Housing & Shelter

FY 25-26: \$4,295,462

The **North County Shelter** in Sunnyvale serves families experiencing homelessness

SANTA CLARA COUNTY COMMUNITY PLAN
TO END HOMELESSNESS

Developing the Next 5-Year Community Plan to End Homelessness



2025-2030 Community Plan Timeline



Key Focus Areas

- 1. Prevent People From Becoming Homeless**
Focus: Prevention
- 2. Continue to House People and Support Them in Retaining their Housing**
Focus: Housing through programs (shelter to permanent)
- 3. Strengthen Access to Care and Services for People Experiencing Unsheltered Homelessness.**
Focus: Unsheltered individuals
- 4. Center and Invest in People with Lived Experience to Lead and Transform the Homeless System**
Focus: Lived experience lead throughout the system





Next Steps



**Mar. – May
2026**

**Community
Input**

**Review of full
draft plan**

**Coordinate
feedback from
City leaders,
lived experience
& constituents**

**Mar. – May
2026**

**Finalize Plan &
Develop Sub-
Regional City
Plans**

**Finalize plan
based on
Community
Input**

**Develop action
steps and
metrics based
on regional
needs**

**Ensure
alignment with
existing City
Plans &
Strategies**

**June – Dec.
2026**

**Plan Adoption
& Endorsement
by County and
Cities**

**CoC Board
Adoption (June)**

**Execute process
to obtain BOS
and City Council
endorsement**

**Plan for
implementation**

Sub-Regional Plans

4 Sub-Regional Groups: North County,
West Valley, South County, San José

- **Description of regional characteristics, priorities, and special populations**
- **Summary of existing efforts and investments in homelessness**
- **Framework of shared goals, strategies, and priorities that align with the Plan**
- **Compilation of links to cities' own homelessness plans (where applicable)**



Additional Input Opportunities



Draft Plan posted on the Office of Supportive Housing's website [here](#).



Four Community Convenings in North County, West Valley, South County, and San José

North County Convening:

- **Date:** Thursday, April 30th, 6-8 pm
- **Location:** El Palo Alto Room at Mitchell Park Community Center, 3700 Middlefield Road, Palo Alto, 94303

Questions for Council to Consider:

1. Are the Focus Areas included in the draft Plan reflective of the needs and goals of your community?
2. What would the Council like to see included as part of their sub-regional plan?
3. How can we work with the Council to help share this information with the community?

