

Smith, Fause & McDonald Inc.
Communications Engineering Group
351 8th Street
San Francisco, California 94103
(415) 255-9140 www.sfmi.com

KEYNOTES

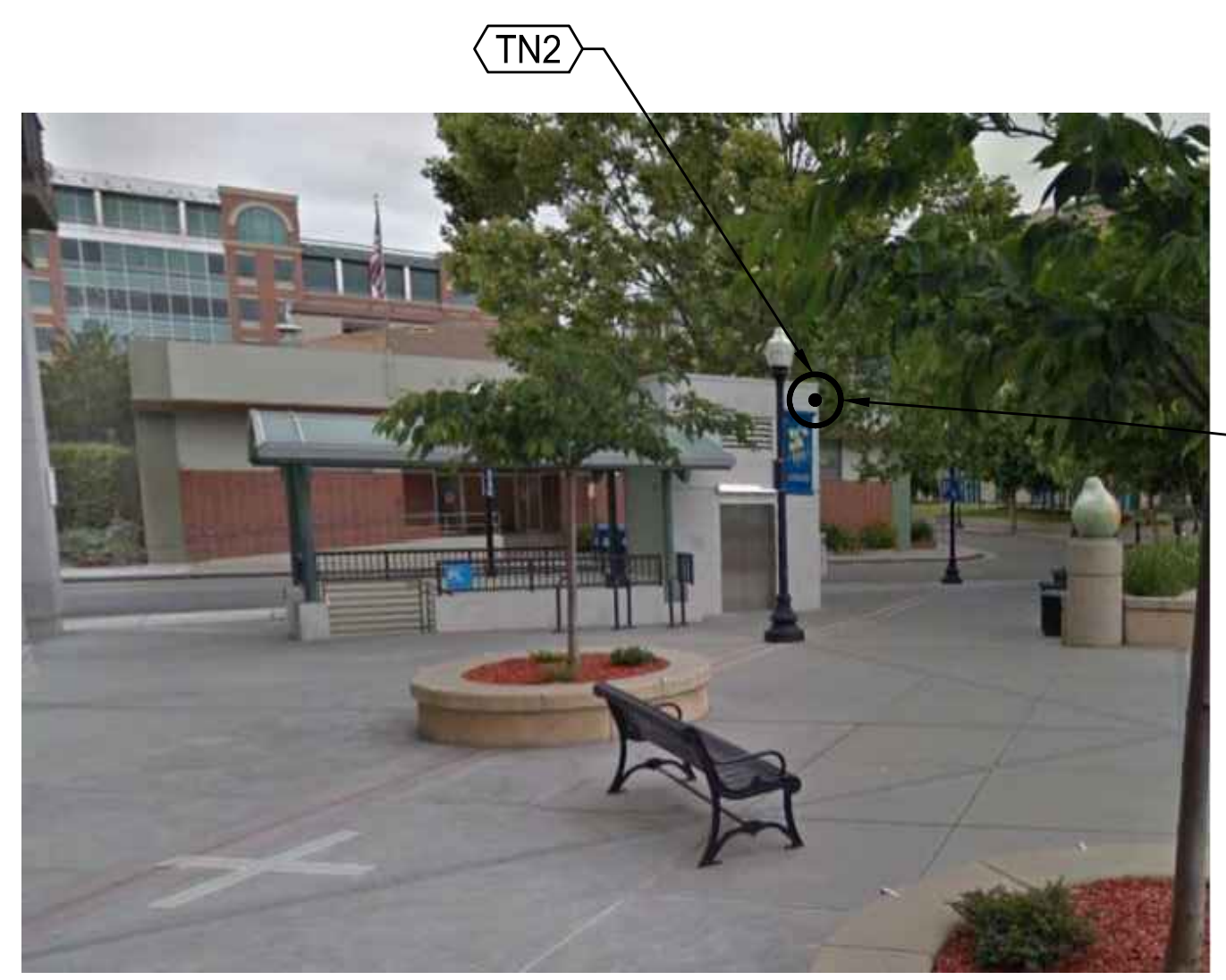
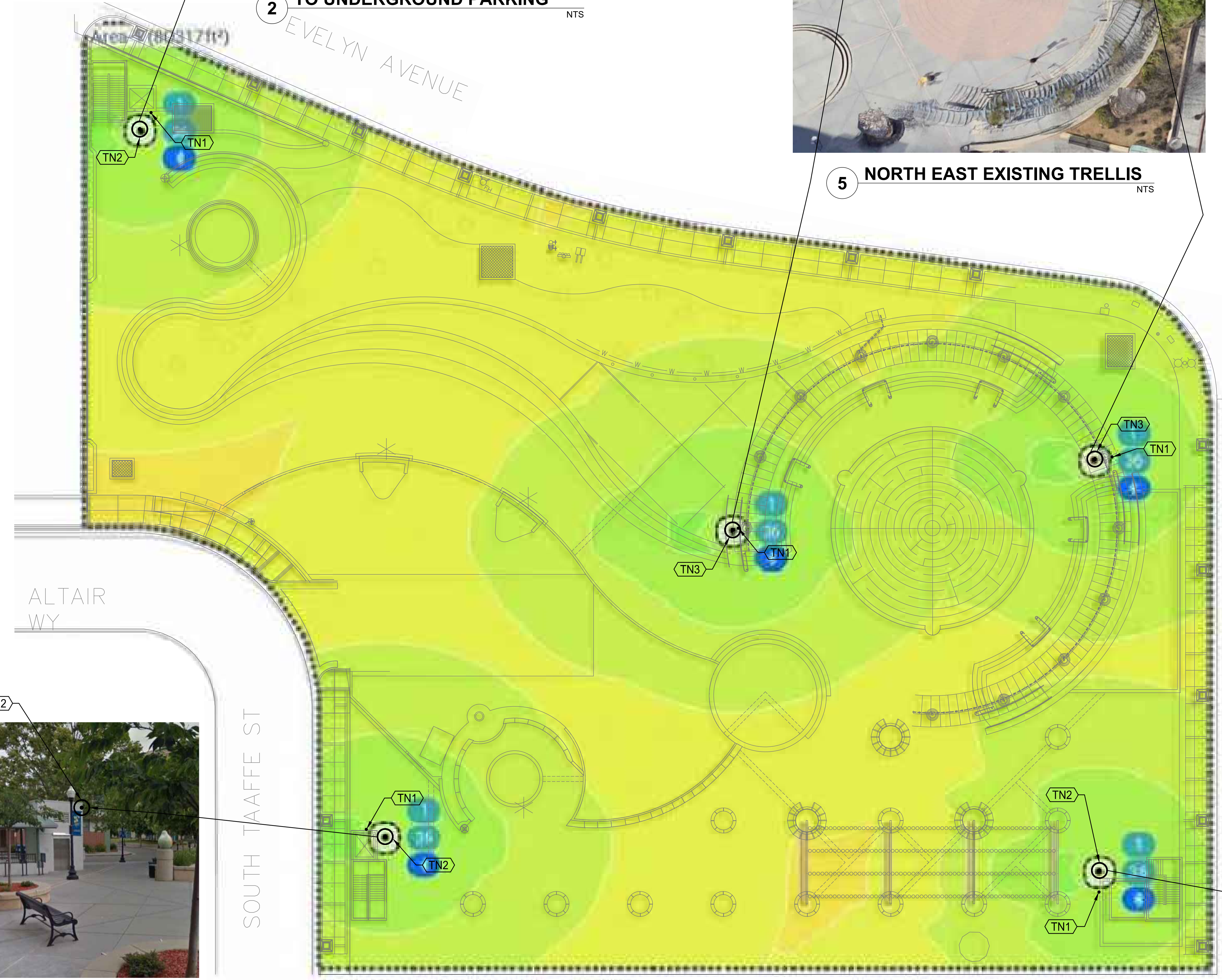
- TN1 1.25" C. DOWN TO GARAGE CEILING AREA.
- TN2 WALL MOUNTED WIRELESS ACCESS POINT MOUNTED AT 11'-0" AFF.
- TN3 WIRELESS ACCESS POINT MOUNTED AT EXISTING TRELLIS.



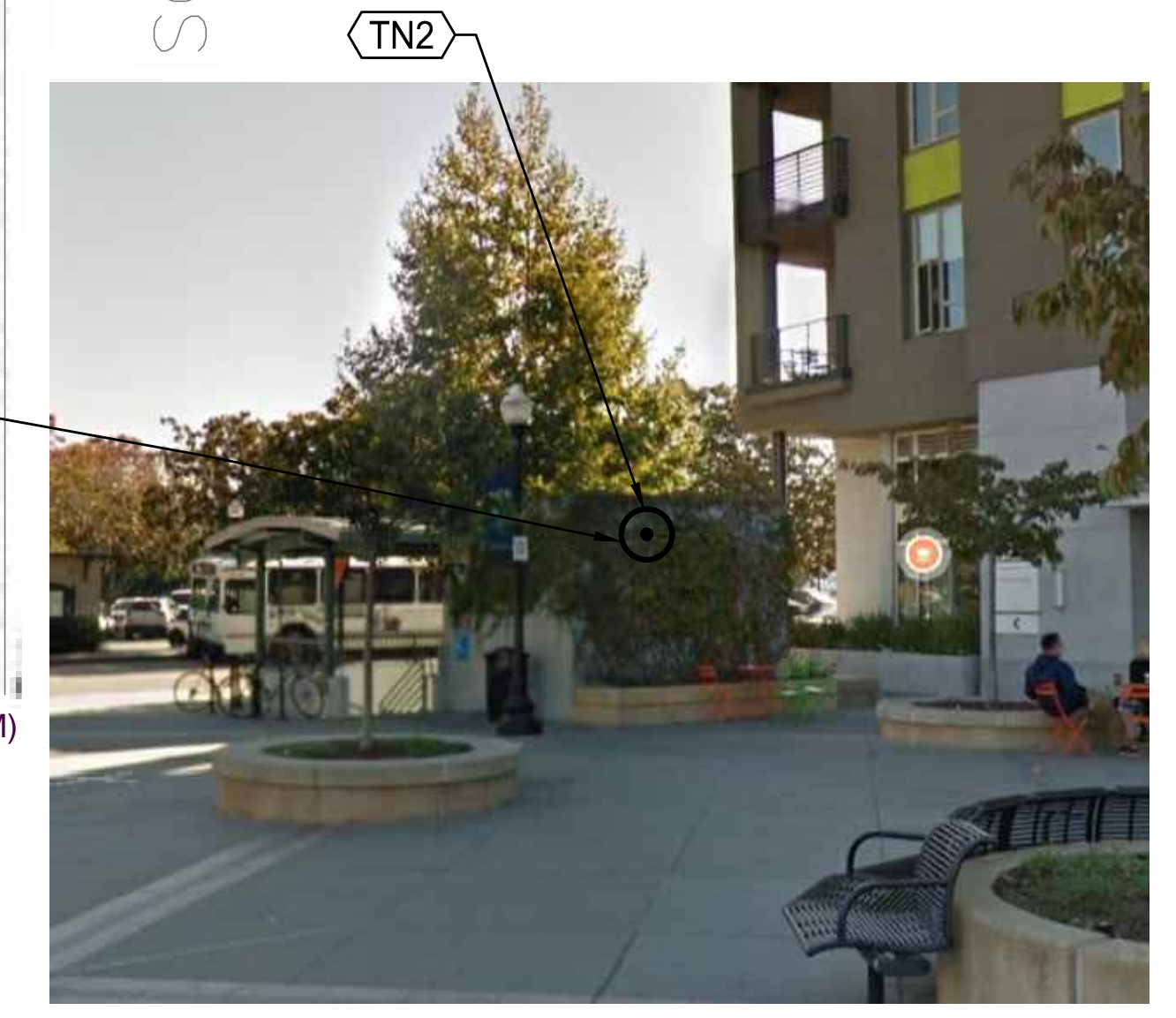
2 NORTH WEST STAIR TO UNDERGROUND PARKING
NTS



5 NORTH EAST EXISTING TRELLIS
NTS

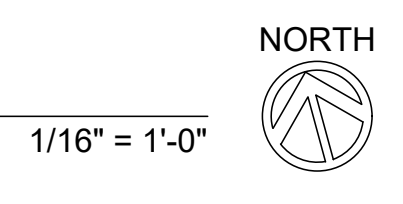
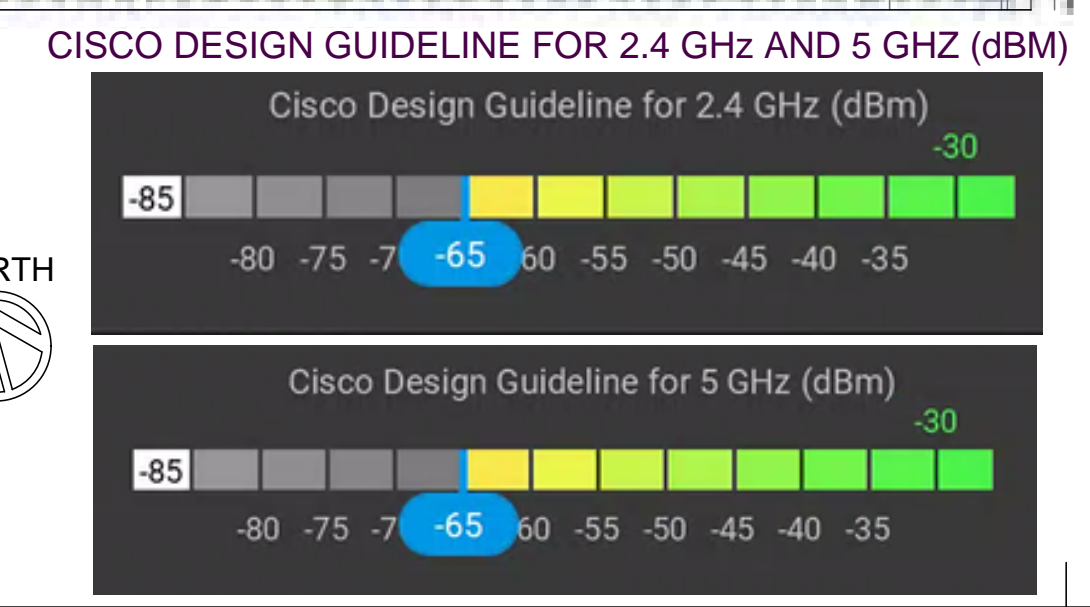


3 SOUTH WEST STAIR TO UNDERGROUND PARKING
NTS



4 SOUTH EAST STAIR TO UNDERGROUND PARKING
NTS

1 ACCESS POINT DEVICE SITE PLAN



KEY PLAN

NO	REVISION	DESCRIPTION	DATE

PROJECT
PLAZA DEL SOL
SUNNYVALE, CALIFORNIA
WIFI SYSTEMS
ADDRESS: SUNNYVALE, CA

ACCESS POINT DEVICE SITE PLAN

SCALE FOR 30" x 42" SHEET	DRAWING TN1.1
JOB NUMBER 2001415A	
DRAWN BY DESIGNED BY PAM	
DATE 10-09-2023	
SHEET	SHEET OF