

LENTICULAR LENS by Ray King

In-Situ Rendering



LENTICULAR LENS by Ray King

Rendering with surroundings

Public Park



Lakeside Drive

Public Parking

Driveway

Note: Approximate view of landscaping is shown

MSocial

1250
LAKESIDE

LENTICULAR LENS by Ray King

Rendering with Dimensions and Materials

Dimensions

Length at North wall (with entry doors): 38'-8"
Length at West wall (facing Lakeside Drive): 39'-1"
Distance from ground: minimum 8'-6" (to prevent tampering)
Overall height of art (lowest disc to frame): 8'-10"

Materials

12" diameter x 3/8" laminated dichroic glass discs
Stainless steel cable with custom brass fittings
Stainless steel tubular frame suspended with cables under ceiling (attached to concrete slab)



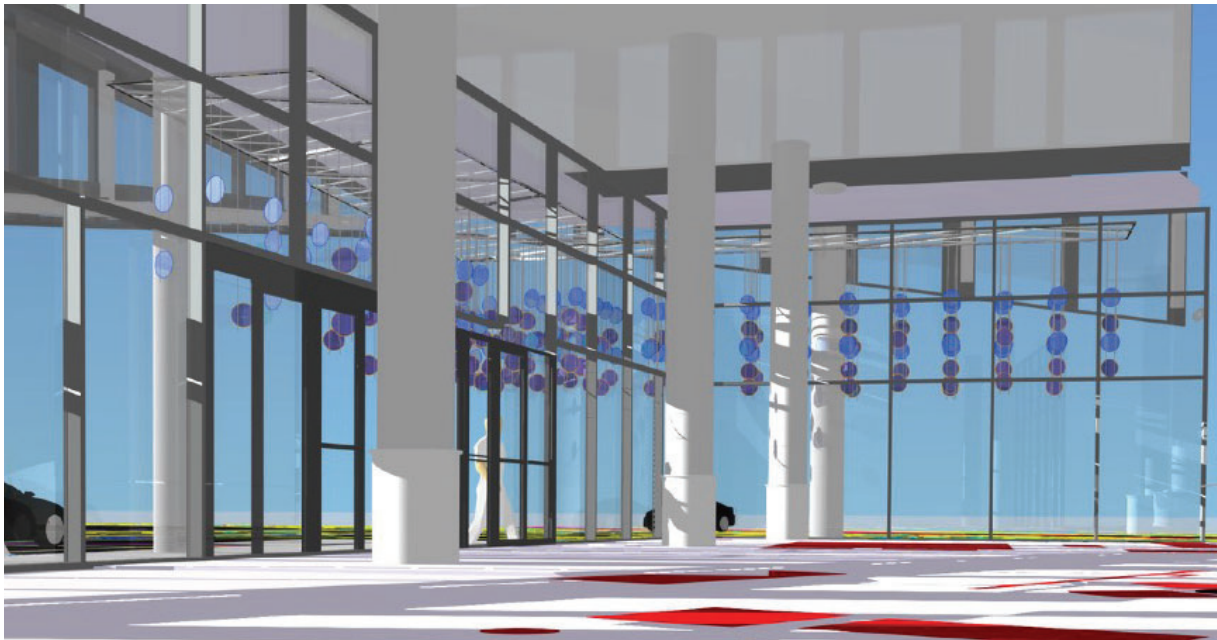
***LENTICULAR LENS* by Ray King**

Elevation Drawings

From Outside



From Inside
Hotel Lobby



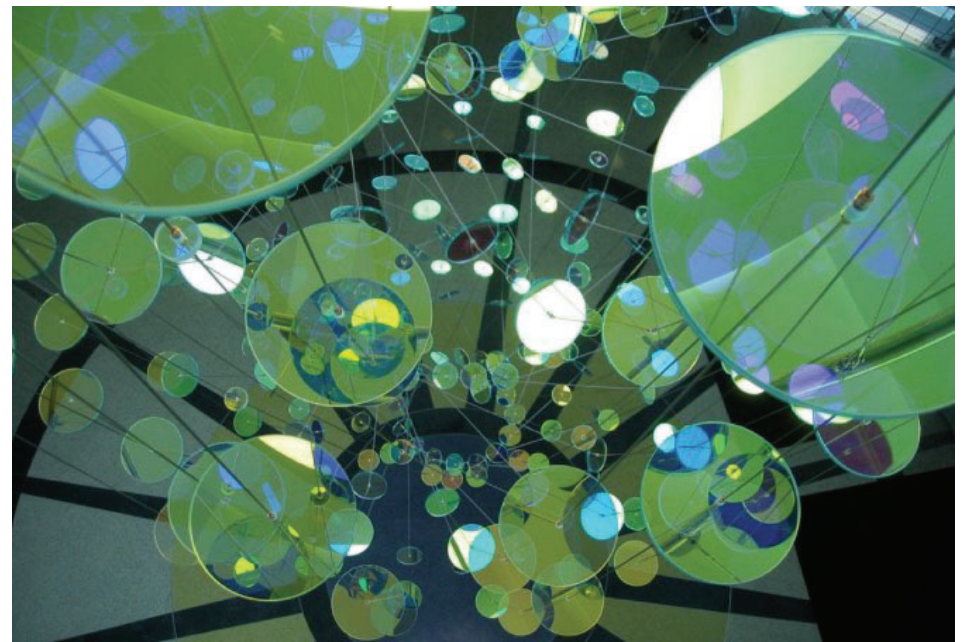
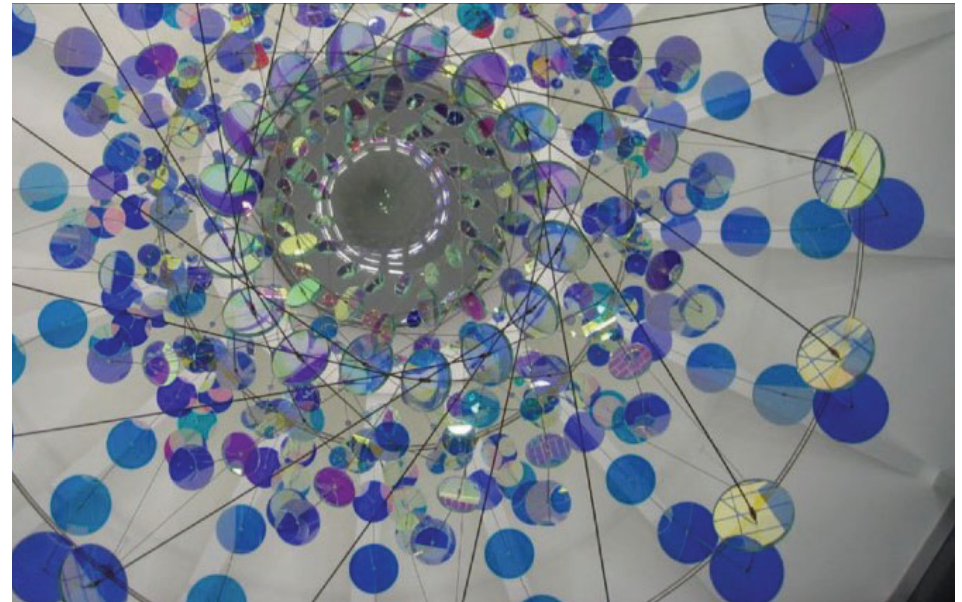
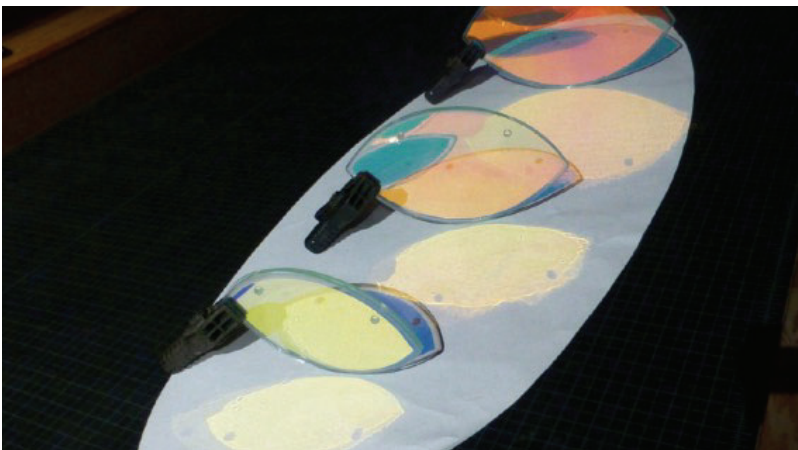
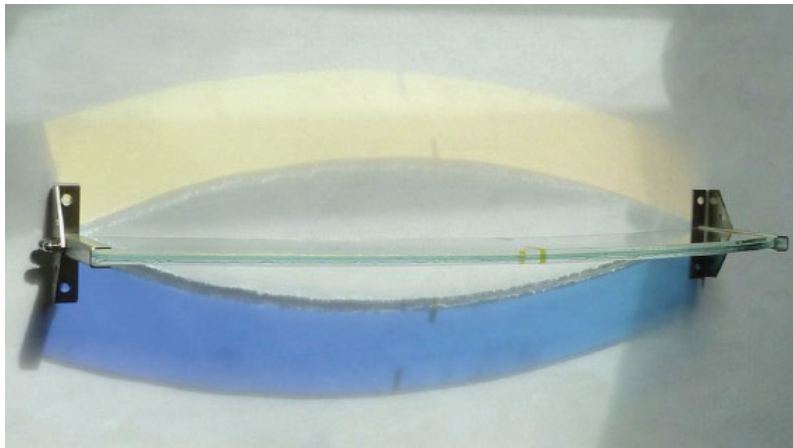


LENTICULAR LENS by Ray King

Material Samples

Dichroic Glass

Dichroic glass is known for its unique ability to display two or more colors depending on the angle of light and the angle of view. This striking quality is achieved through a special manufacturing process that coats the glass with multiple micro-layers of metal oxides or silica.



Interactive 3-D models of *Lenticular Lens* are available at:

<https://sketchfab.com/3d-models/m-social-glass-lenticular-only-obj-60ac9bab47114f70af9bcea7a5b80756>

<https://sketchfab.com/3d-models/m-social-glass-lenticular-obj-29db4b55162e4b35a2eef7087868301d>

<https://sketchfab.com/3d-models/m-social-glass-lenticular-obj-4d1fd591bf5f4c68b61ed4ac02d37e2c>