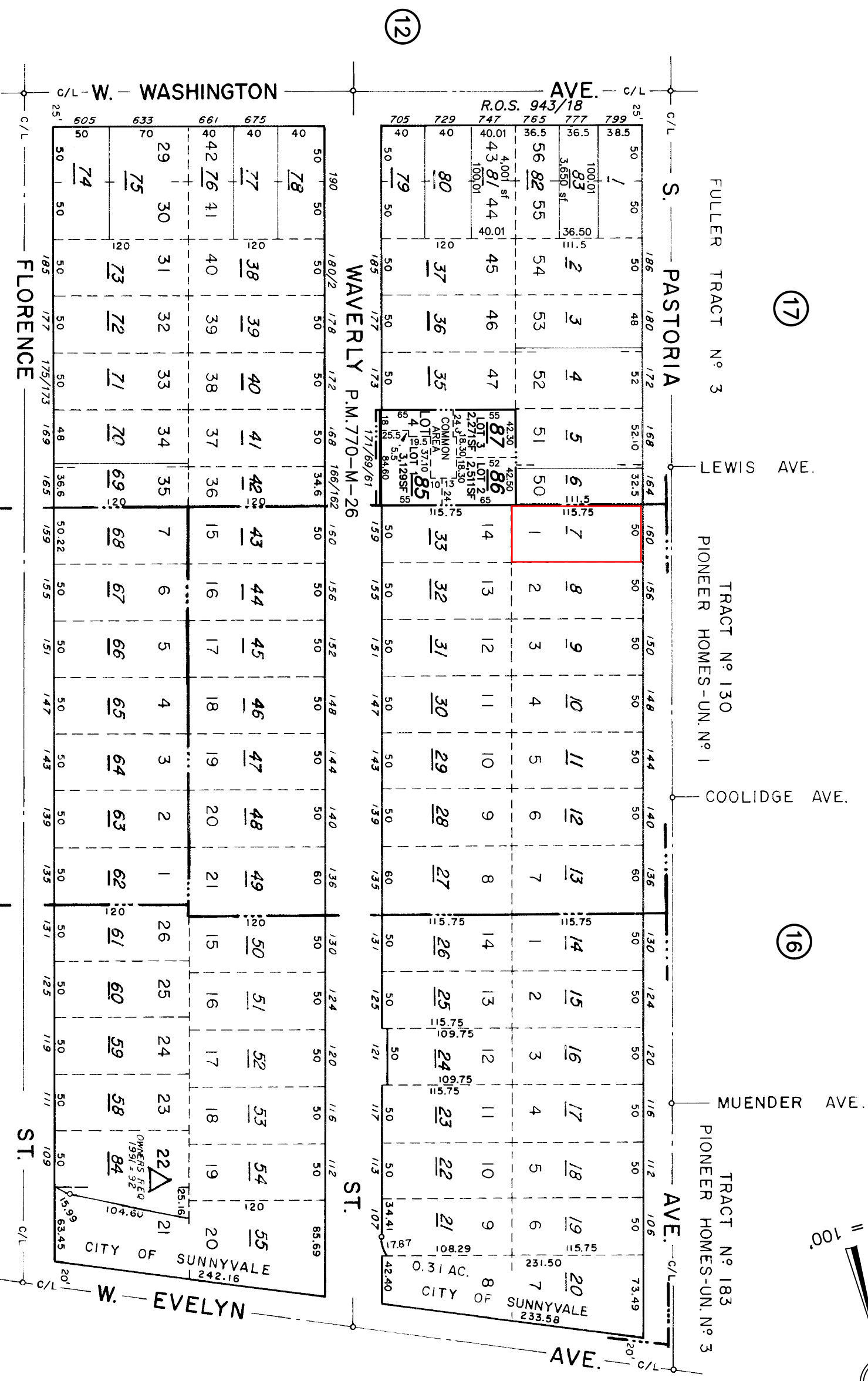
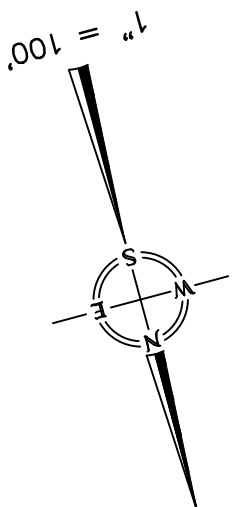


Assessor's Parcel Map

OFFICE OF COUNTY ASSESSOR — SANTA CLARA COUNTY, CALIFORNIA



TRA DET. MAP 83  
LAWRENCE E. STONE - ASSESSOR  
Cadastral map for assessment purposes only.  
Compiled under R. & T. Code, Sec. 327.  
Effective Roll Year 2024-2025