


(See Corrected Attachment 1,
posted 20250415)

Two-Stage Left Turn Bicycle Box

A bicycle box offers a safer and more comfortable space for bicyclists of all skill levels. It is a space on the roadway for bicyclists to make a left turn in two stages. It has a turn arrow and a bicycle stencil inside a green and white painted box.



How it works

- 1 Bicyclists no longer use the left turn lane to complete a left turn.
 - 2 As a bicyclist approaches the intersection, wait for a green light before riding through the intersection and into the bicycle box.
 - 3 Turn your bike to face the direction you want to go and wait for the next green light.
 - 4 When the light turns green, look in all directions before riding forward to complete the turn.
-  Vehicles are not allowed to make a right turn on a red light when bicyclists are in the bicycle box.



Sunnyvale

(See Corrected Attachment 1,
posted 20250415)

What is a Class III/IIIB Bikeway?

Class III bikeways are bike routes where bicyclists share the lane with motor vehicles. There is no separation for the bicyclists from vehicle traffic, and bicyclists may even use the full lane.

Class IIIB bikeways (Bicycle Boulevards) are similar to Class III routes but they are typically along local streets where traffic calming features (speed humps, bike sharrow markings, and edge lines) are present.



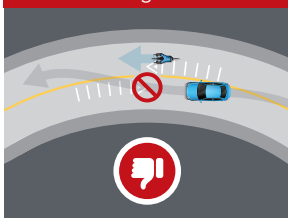
Look for these road signs.

How to share the road

Bicycles may use full lane



Overtaking violations



Sunnyvale

(See Corrected Attachment 1,
posted 20250415)

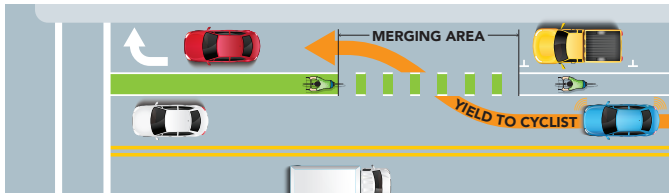


SOLID DOUBLE YELLOW LINE

Do not cross the solid double yellow line when going around slower vehicles or bicycles.

Keep a safe distance from cyclists.

(California Vehicle Code § 21460)



DASHED GREEN BIKE LANE

The dashed green lanes are areas where cars and bikes are intended to cross paths.

Cyclists have the right of way and may go straight with caution.

Motorists are expected to yield right of way to cyclists in these areas.

(California Vehicle Code § 21760)

(See Corrected Attachment 1,
posted 20250415)

CROSSING ROADS SAFELY

- ✓ Pedestrians are now allowed to cross a roadway at any location, but only when safe to do so
- ✓ Drivers must yield to pedestrians

YES



OK



NO



California Vehicle Code § 21954 & 21955

For information about transportation and traffic safety
in Sunnyvale, scan the QR code or search
"Transportation and Traffic Safety" at [Sunnyvale.ca.gov](https://www.sunnyvale.ca.gov)



Sunnyvale

Printed on recycled paper • July/August 2024

(See Corrected Attachment 1,
posted 20250415)

CROSSING ROADS SAFELY

- ✓ Pedestrians are now allowed to cross a roadway at any location, but only when safe to do so
- ✓ Drivers must yield to pedestrians

YES



OK



NO



California Vehicle Code § 21954 & 21955

For information about transportation and traffic safety
in Sunnyvale, scan the QR code or search
"Transportation and Traffic Safety" at [Sunnyvale.ca.gov](https://www.sunnyvale.ca.gov)



Sunnyvale

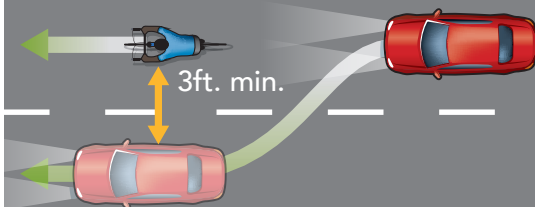
Printed on recycled paper • July/August 2023

3-FOOT SAFETY DISTANCE



- ✓ Bicyclists may use full lane
- ✓ Drivers must slow down and wait to pass only when safe to do so

When Another Lane is Available



- ✓ Drivers must pass a bicyclist by making a lane change when another lane is available
- ✓ Drivers must stay at least 3 feet away from any bicyclist

Walk or Bike Instead of Driving

- ✓ Improve your health
- ✓ Help the environment
- ✓ Reduce traffic congestion
- ✓ Have fun while traveling



For information about transportation
and traffic safety in Sunnyvale, scan the
QR code or search "Transportation and
Traffic Safety" at **Sunnyvale.ca.gov**



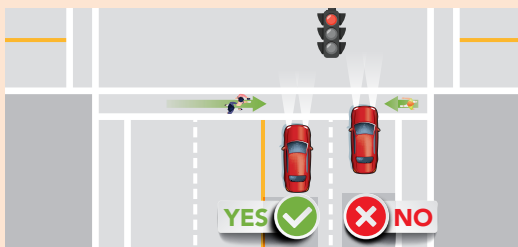
Sunnyvale

(See Corrected Attachment 1,
posted 20250415)

YIELD TO PEDESTRIANS AND USE YOUR SIGNAL

- Ensure safety of all road users
- Use your signal for turning and changing lanes*

FOR DRIVERS



Watch for pedestrians.
Stop outside of crosswalks.

FOR DRIVERS



← LEFT TURN



→ RIGHT TURN



⦿ STOP/SLOW

FOR BICYCLISTS



← LEFT TURN



→ RIGHT TURN



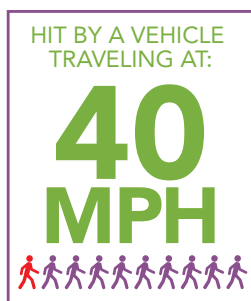
⦿ STOP

*California Vehicle Code (CVC) 22107 & 22108

(See Corrected Attachment 1,
posted 20250415)

Speeding is Dangerous

The risk of injury
and death increases as
speed increases.



Only 1 out of 10
pedestrians survives

Source: <http://www.bikeleague.org/sites/default/files/speed.jpg>

Be Alert, Stay Safe

DRIVERS — Slow down and watch for pedestrians and bicyclists, especially when turning.

PEDESTRIANS and **BICYCLISTS** — Use body and bike lights and wear bright and reflective clothing.



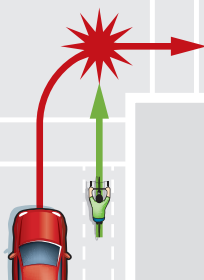
Sunnyvale

Printed on Recycled Paper. July/August 2021

Driving Safely with Bicyclists

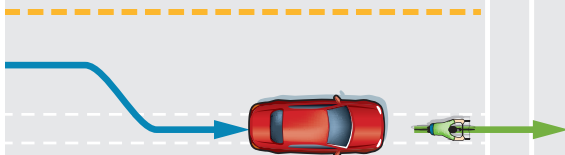
1. MERGE RIGHT TO TURN RIGHT

WRONG

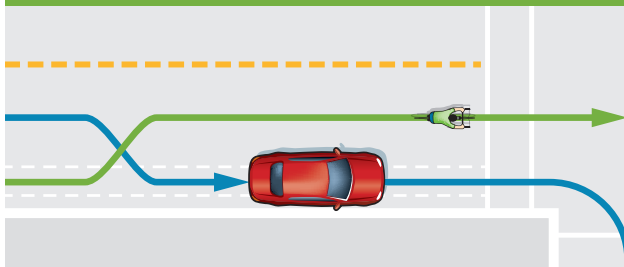


Improper turns are a frequent cause of bicyclist injuries.

CORRECT



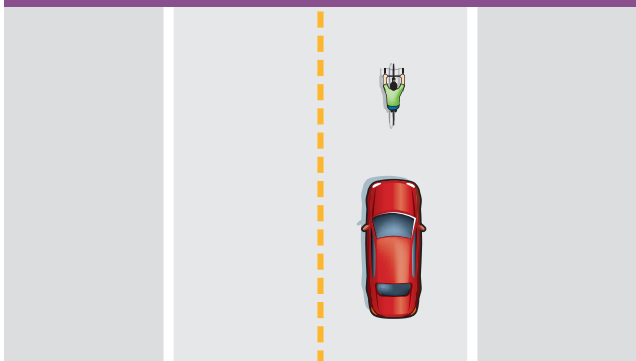
Drivers shall merge into the bicycle lane to turn right, while keeping 3 feet of distance from any bicycle. Vehicles can enter the bicycle lane up to 200 feet in advance of the intersection to turn right.



Bicyclists can pass on left as drivers merge into the bicycle lane.

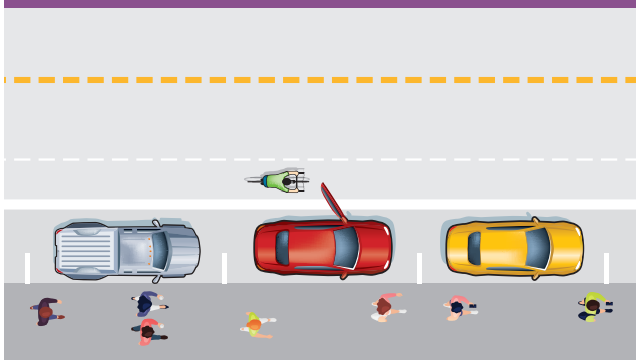
(See Corrected Attachment 1,
posted 20250415)

2. KEEP A SAFE DISTANCE



Bicyclists may use full lane where no bicycle lanes or shoulders exist. Stay 3 feet away from any bicycle.

3. LOOK BEFORE OPENING THE DOOR



Watch for bicyclists and don't underestimate their speed.

For information about the
Bicycle and Pedestrian Advisory Commission,
search "**BPAC**" at Sunnyvale.ca.gov



Sunnyvale

Printed on Recycled Paper.

(See Corrected Attachment 1,
posted 20250415)

Enjoy Sunnyvale with a Walk or Ride



Sunnyvale

Sunnyvale Bicycle & Pedestrian Advisory Commission (BPAC) Meetings

The commission advises
City Council on bicycle
and pedestrian topics
in Sunnyvale.

When

3rd Thursday each month

Time

6:30 p.m.

Location

Council Chambers at
City Hall

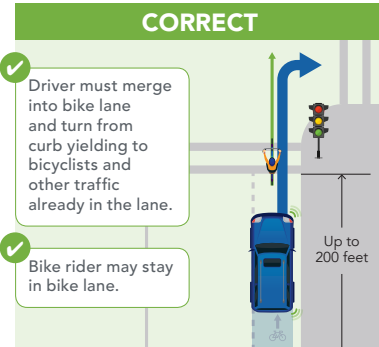
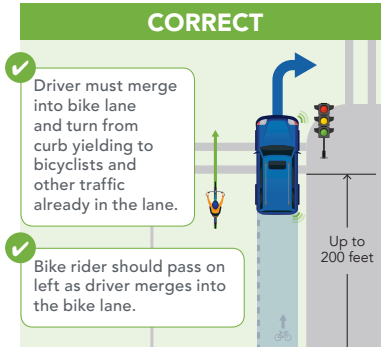
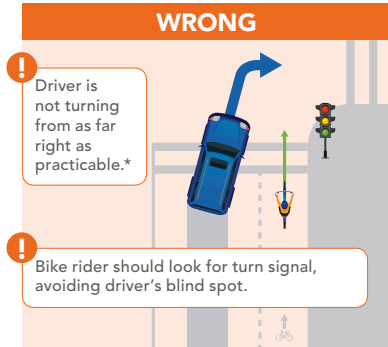
bpac@sunnyvale.ca.gov

Photo credit: Paul Sirajuddin



(See Corrected Attachment 1,
posted 20250415)

Avoid turning right into a bicyclist



*California Vehicle Code (CVC) 21209,
21717, 21208, 21760, & 22100

Top Factors Leading to Serious Injury Collisions in Sunnyvale*

1. Unsafe Speed
2. Right-of-way Violations
3. Driving Under the Influence

Safety Tips



Slow down for
pedestrians and
bicyclists.



Be alert
when crossing.



Do not drive under
the influence of drugs
or alcohol.



Do not text while
driving.

*Source: Sunnyvale Vision Zero

(See Corrected Attachment 1,
posted 20250415)

Come to a Sunnyvale BPAC*
Meeting and discuss potential
improvements, traffic safety
and future projects.



***Sunnyvale Bicycle & Pedestrian Advisory
Commission (BPAC) Meetings**

When: 3rd Thursday each month

Time: 6:30 p.m.

Location: Council Chambers at City Hall

To contact the Sunnyvale BPAC
email **bpac@sunnyvale.ca.gov**



Sunnyvale

(See Corrected Attachment 1,
posted 20250415)

To avoid a crash, you
usually have less than
2 seconds to react.



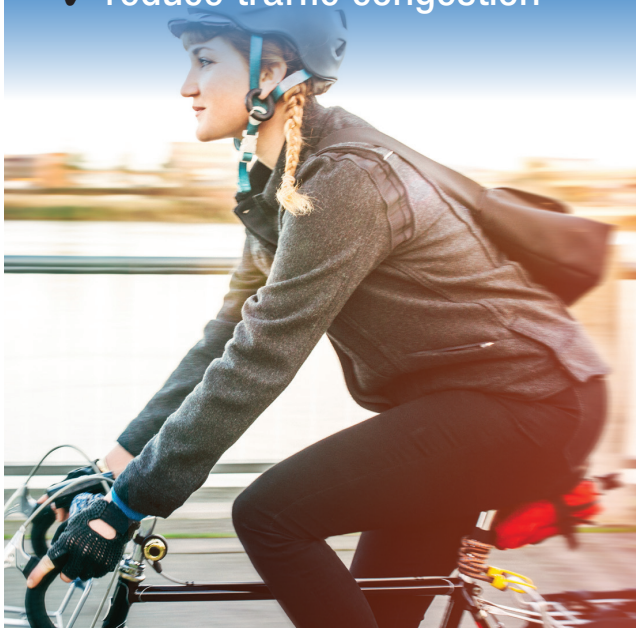
But the average
time your eyes are off
the road while texting
is **5 seconds**.

Don't text while driving.
DISTRACTED DRIVING KILLS

(See Corrected Attachment 1,
posted 20250415)

Walk or bike instead of driving.

- ✓ improve your health
- ✓ save the environment
- ✓ reduce traffic congestion



Sunnyvale Bicycle & Pedestrian Advisory

Commission meetings are open to the public and
held on the 3rd Thursday of each month at 6:30 p.m.
in the West Conference Room at Sunnyvale City Hall.

To contact the Sunnyvale
Bicycle & Pedestrian Advisory Commission
email ***bpac@sunnyvale.ca.gov***

or visit the Bicycle & Pedestrian
Advisory Commission website at
BPAC.inSunnyvale.com.



May/June 2017

Printed on Recycled Paper.