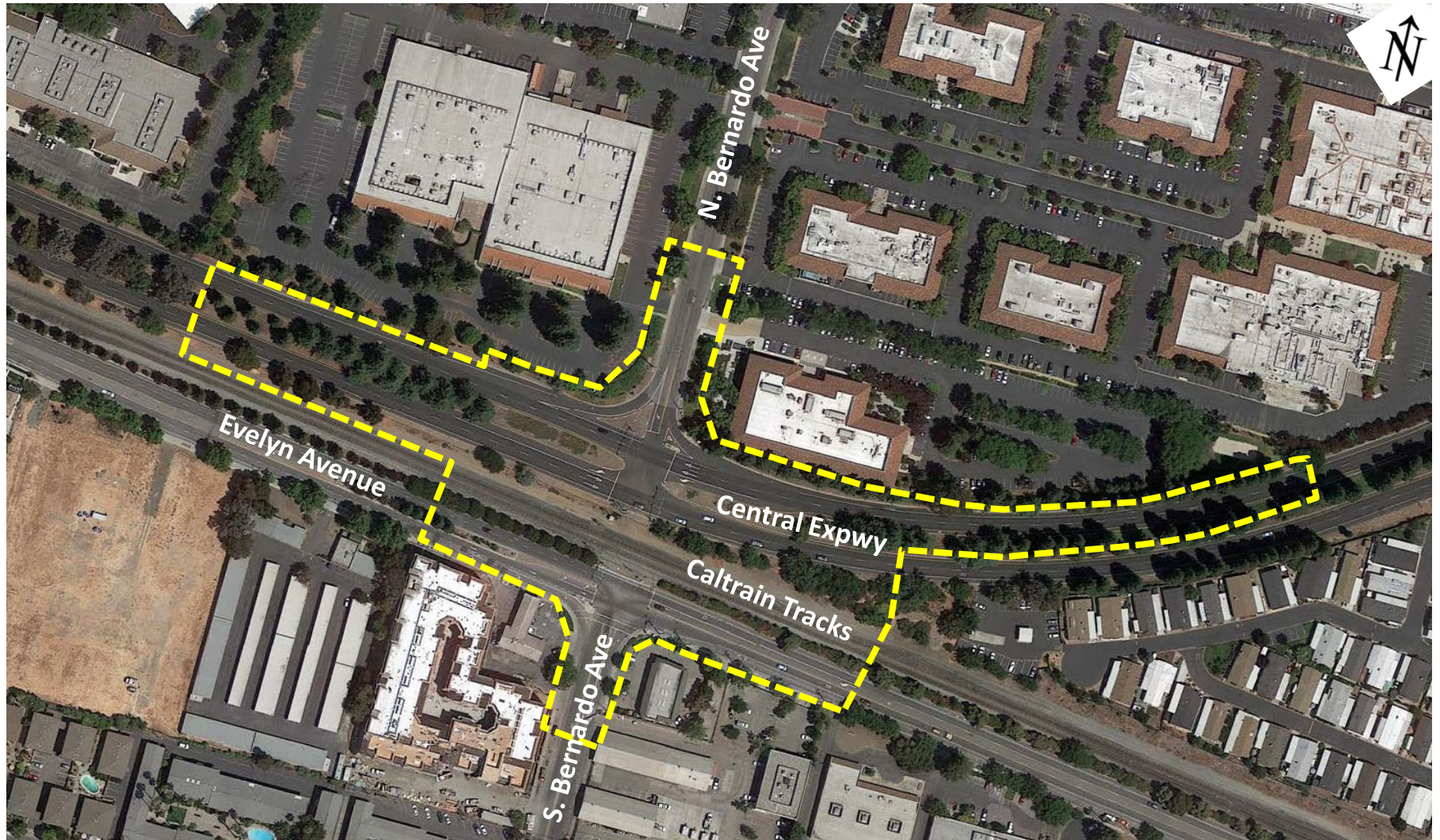




# BERNARDO AVENUE UNDERCROSSING PROJECT

Bicycle and Pedestrian Advisory Commission (BPAC)  
City of Sunnyvale  
March 16, 2023

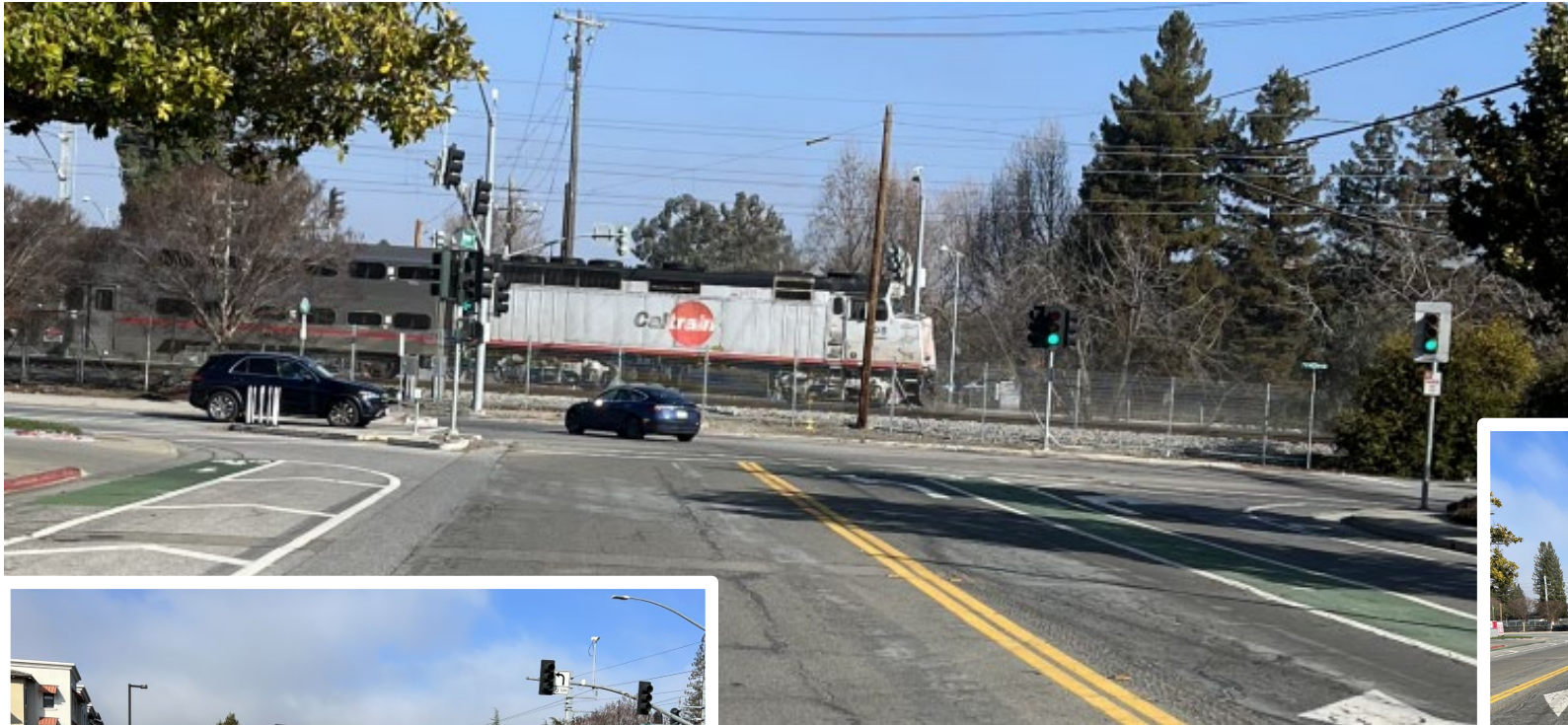
# Project Purpose and Limits





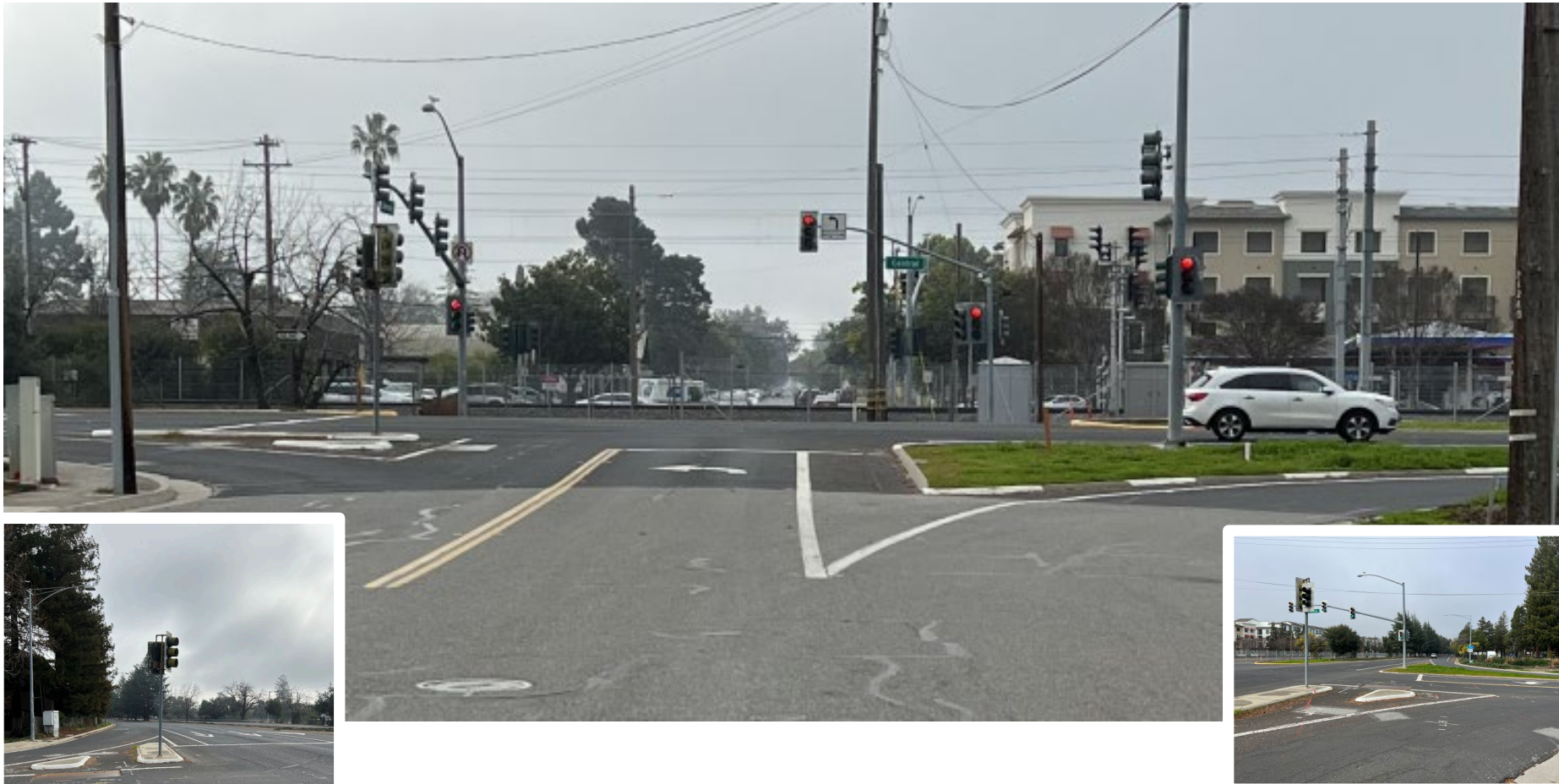
# Project Purpose

## Existing Access – Evelyn Avenue Intersection



# Project Purpose

## Existing Access – Central Expressway Intersection





# Project Purpose

## Existing Bicycle and Pedestrian Routes

### Pedestrian Route



1.6 miles, 25 min

### Bicycle Route



1.5 miles, 8 min



# Project Description and Partners



Central Expressway  
Undercrossing



Caltrain  
Undercrossing

# Work Performed to Date

---

- Sunnyvale and Mountain View agreement
- Measure B funding
- Developed conceptual options
- Joint Bicycle and Pedestrian Advisory Commission/Committee (BPAC) Presentation
- Caltrain/Joint Powers Board approved Use Variance
- On-going agency coordination
  - Caltrain
  - County of Santa Clara
  - Mountain View
  - VTA
- Alternative refinements from feedback
- Community Outreach meeting
- Mountain View Bicycle/Pedestrian Advisory Committee



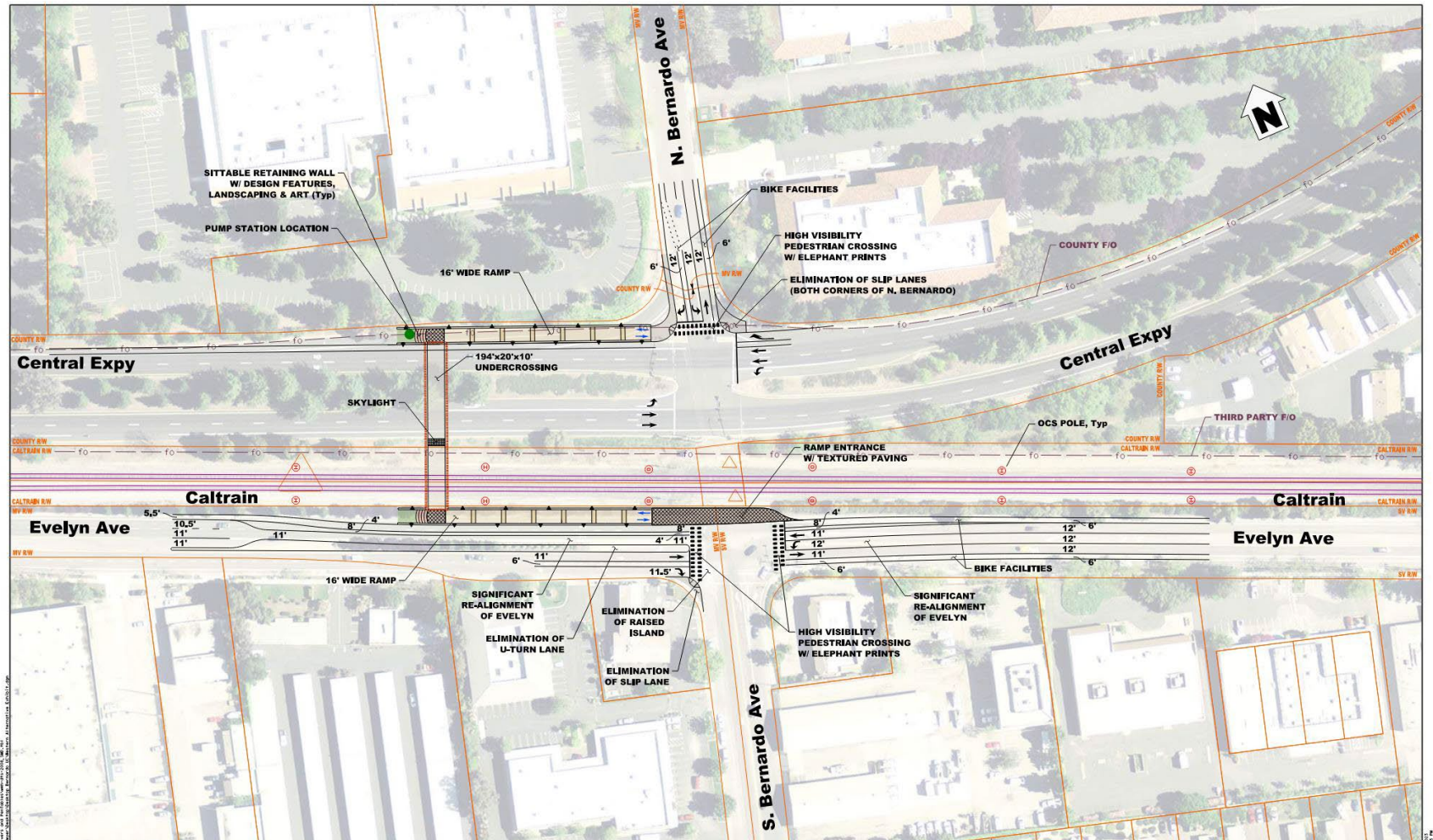
# Project Alternatives





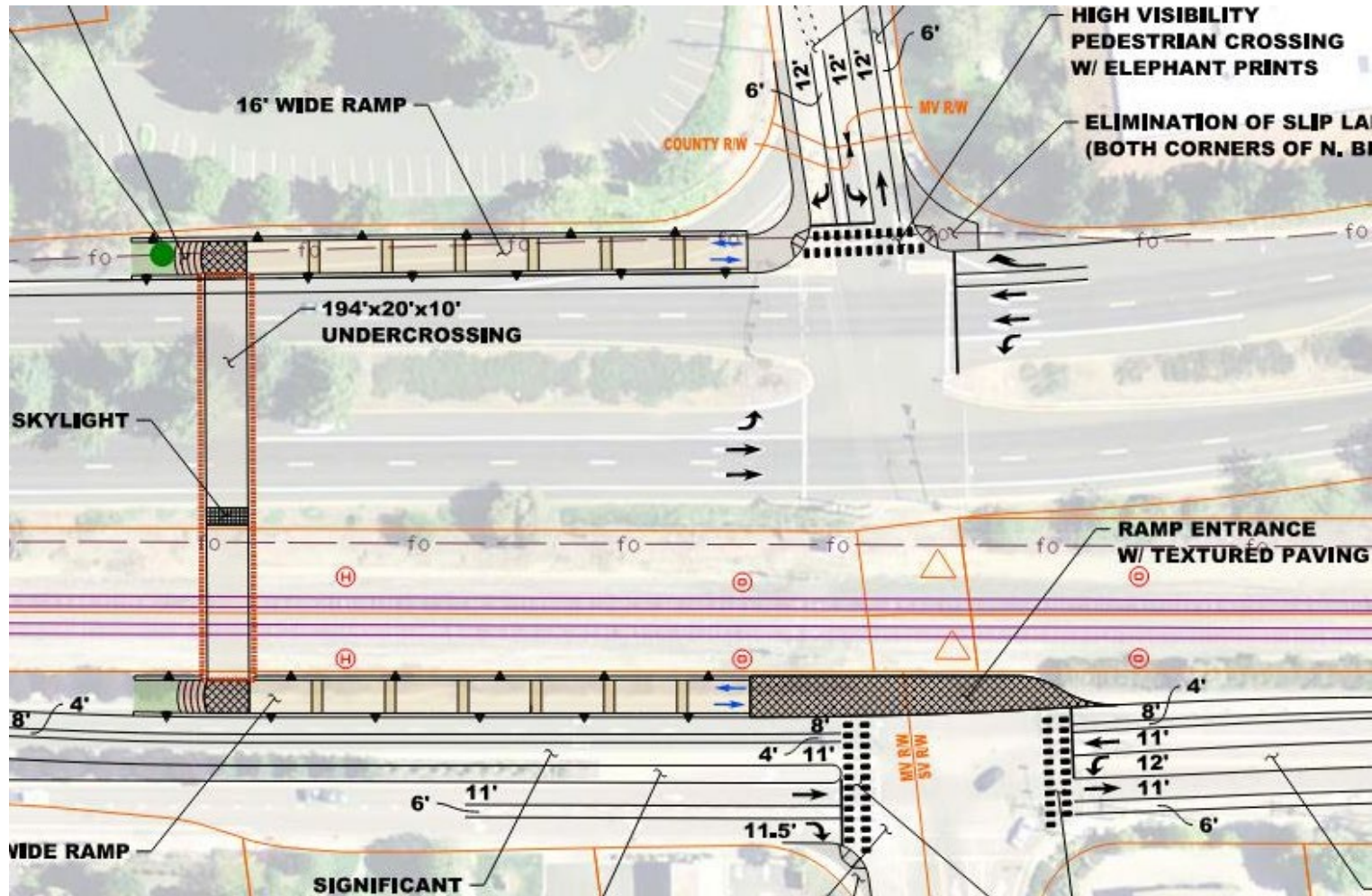
# Project Alternatives

## Western Alternative



# Project Alternatives

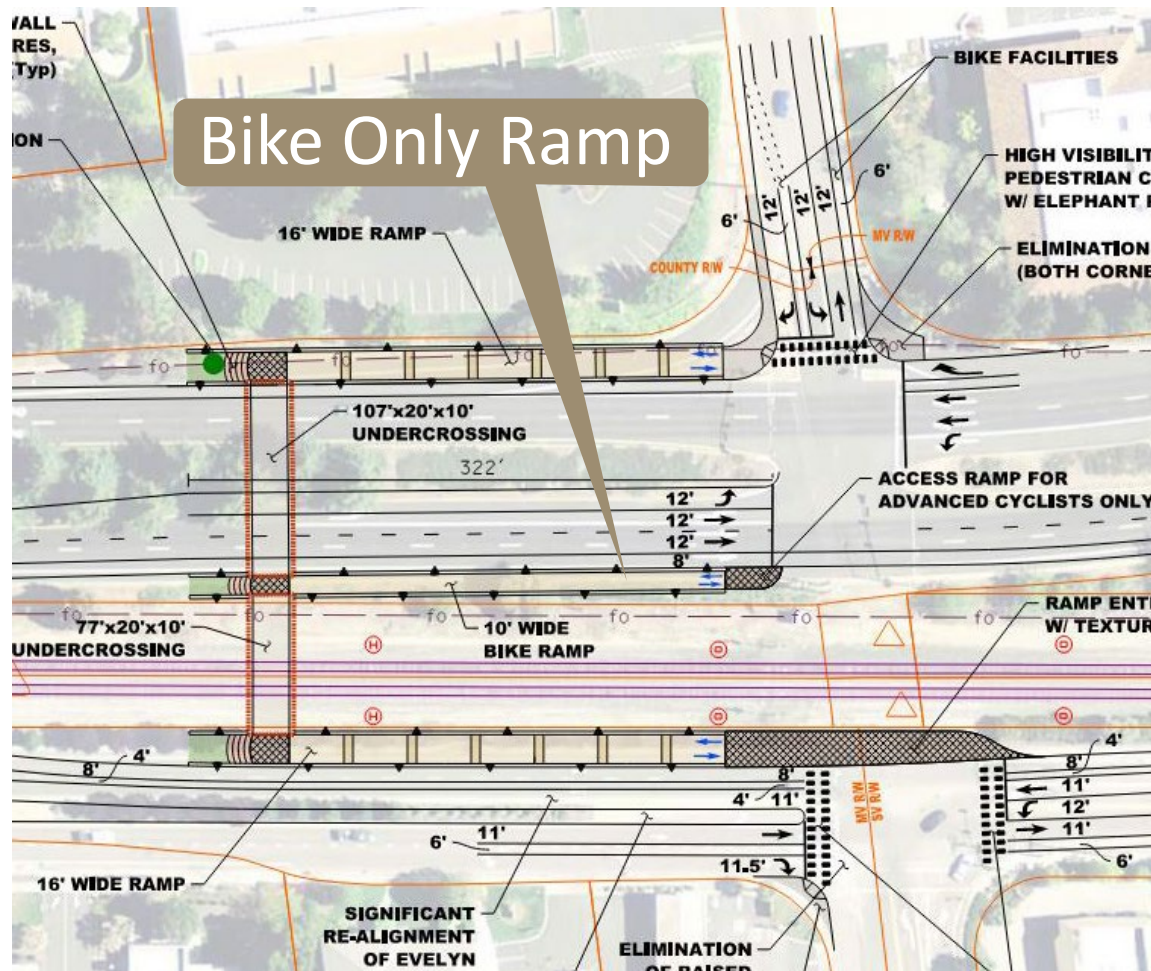
## Western Alternative





# Project Alternatives

## Western Alternative with Intermediate Bike Ramp



### Benefits:

- More direct access for EB Central Expy cyclists to Bernardo Ave

### Concerns:

- Potential for unintended pedestrians usage that leads to intersection with no pedestrian facilities
- Central Expy – suitable for advanced cyclists only
- Requires realignment of EB Central Expy and reduction of median width
- Not supported by Caltrain
- Not supported by County – do not want pedestrians at signal
- Additional Cost

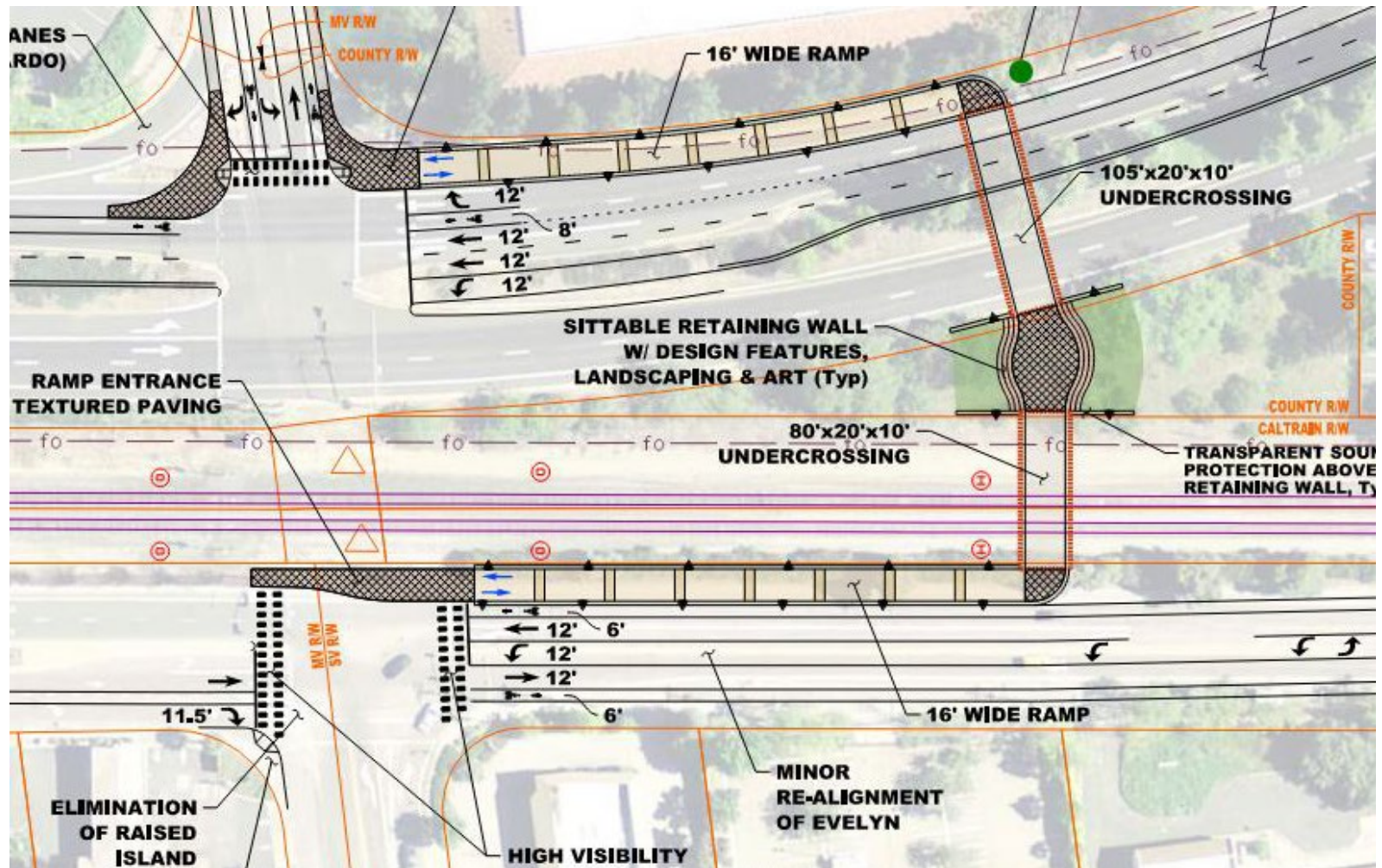
# Eastern Alternative





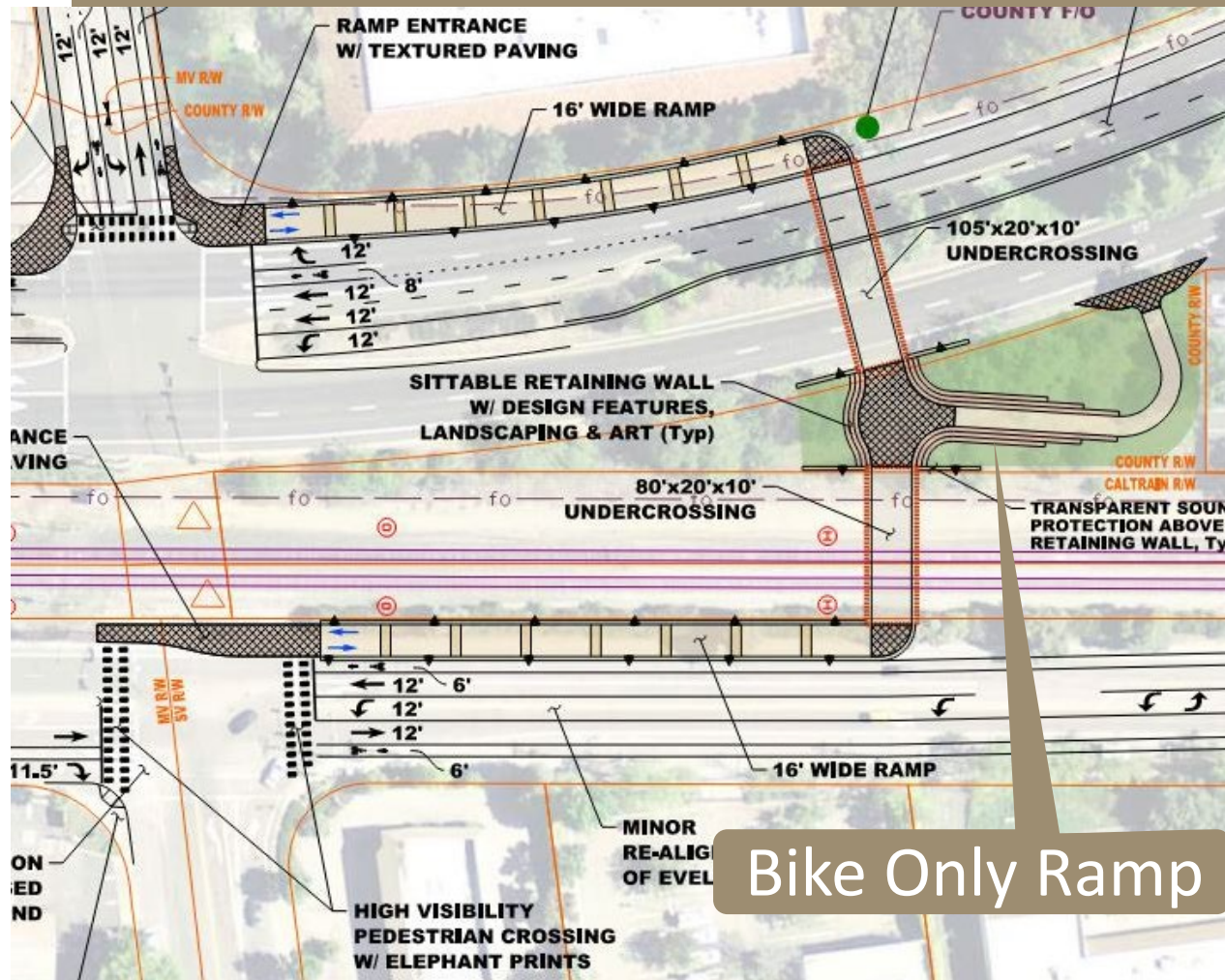
# Project Alternatives

## Eastern Alternative



# Project Alternatives

## Eastern Alternative – with Intermediate Bike Ramp



### Benefits:

- More direct access for EB Central Expy cyclists to Bernardo Ave.

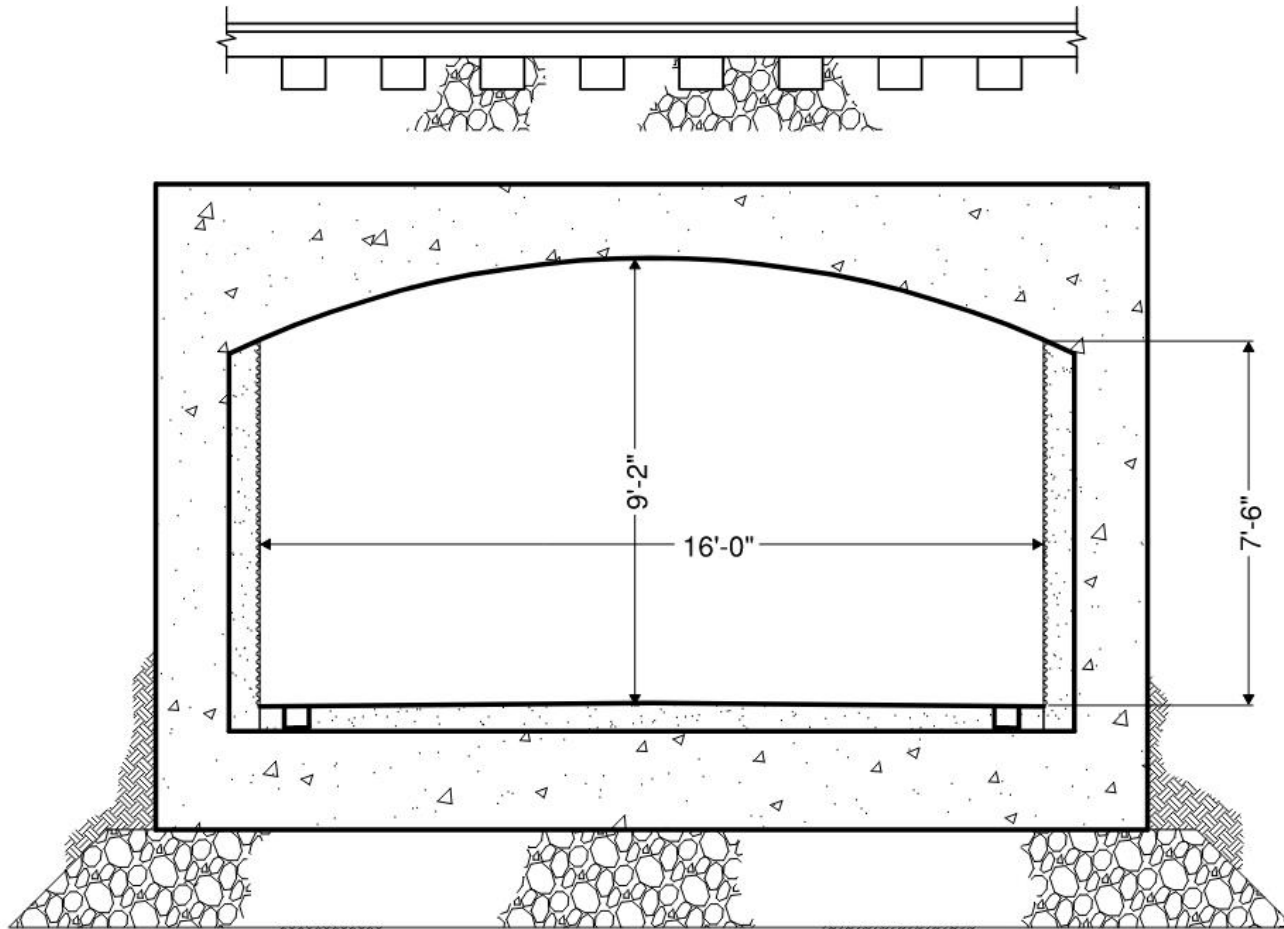
### Concerns:

- Potential for unintended pedestrians usage that leads to Central Expy with no pedestrian facilities
- Central Expy suitable for advanced cyclists only
- Additional Tree loss
- Additional Cost



# Project Alternatives

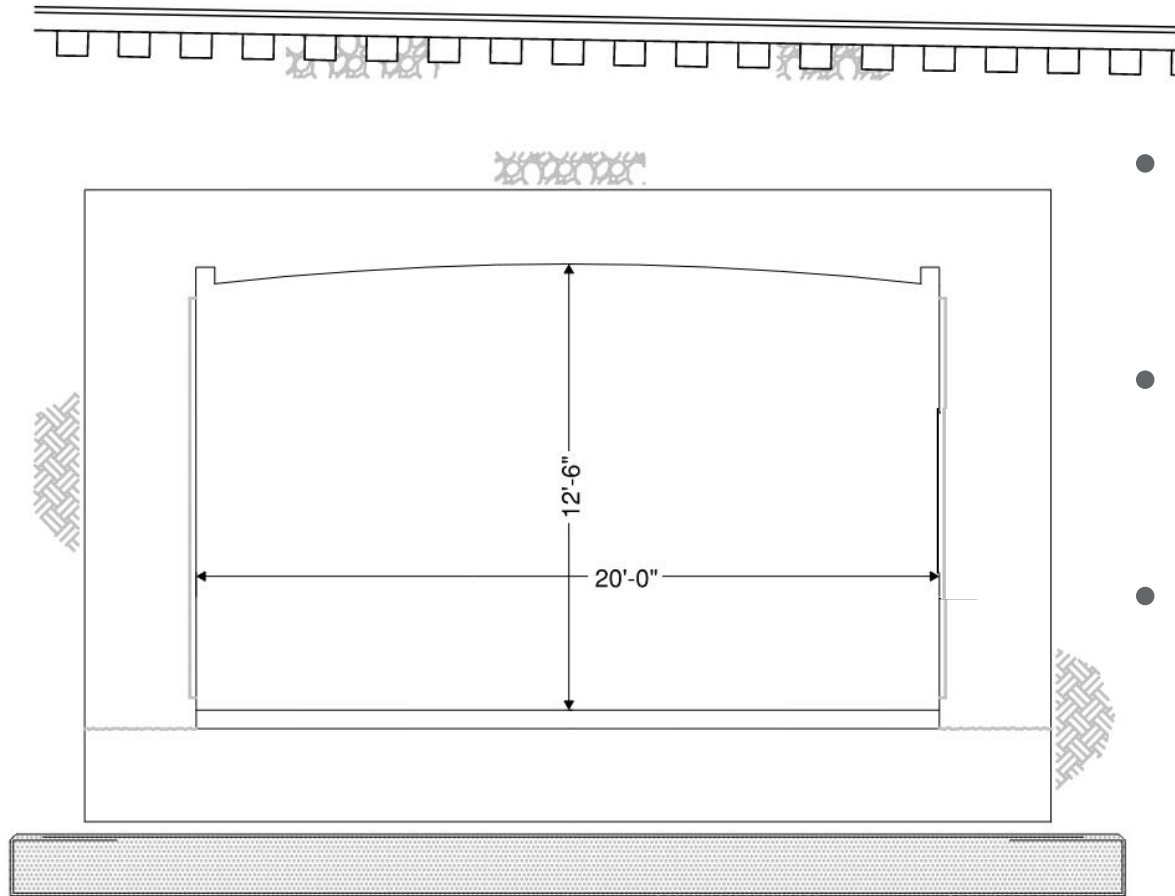
## Undercrossing Cross-Section Options



Santa Clara Caltrain Station

# Project Alternatives

## Undercrossing Cross-Section Options



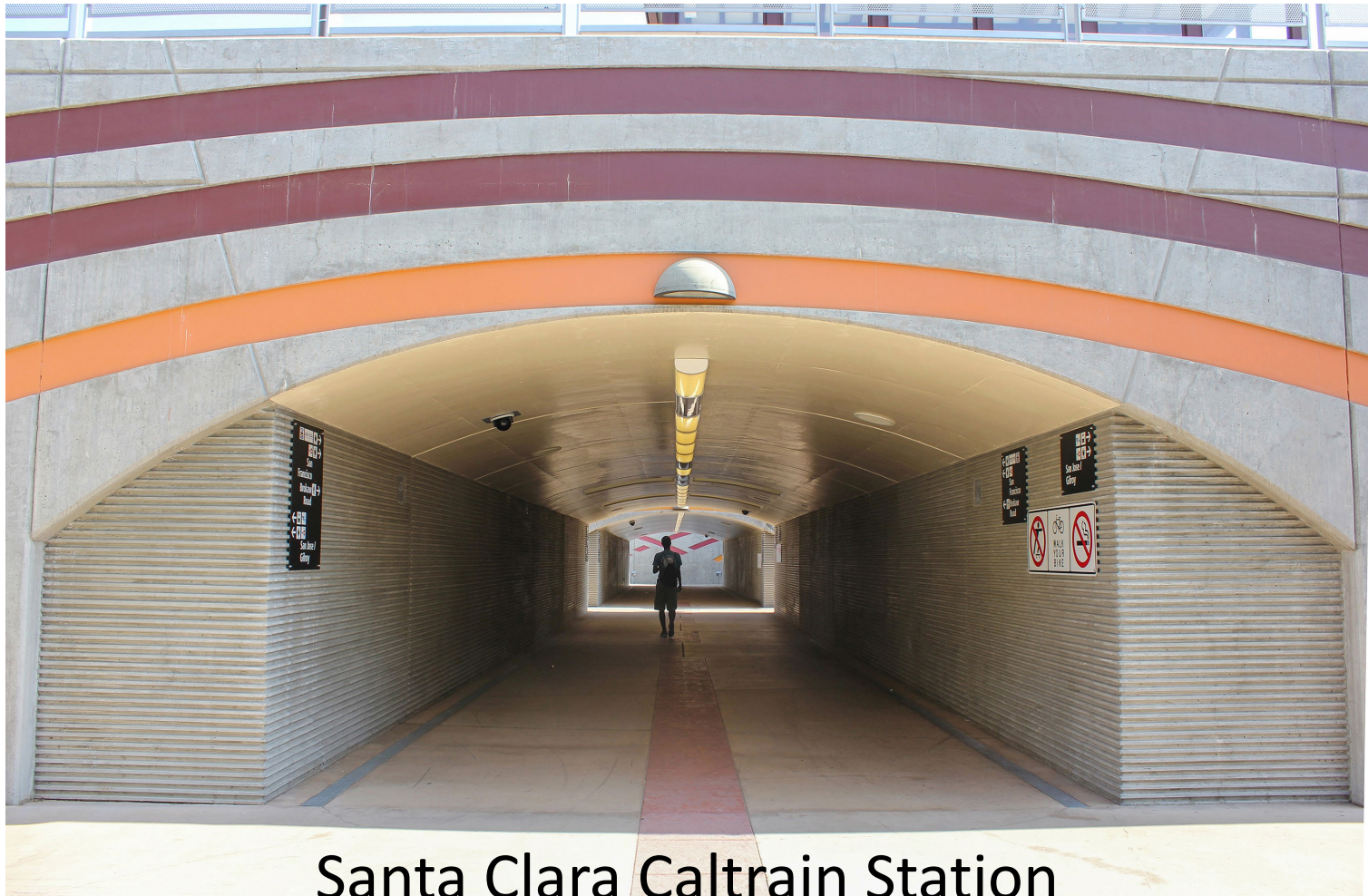
- Larger Dimensions
- Arched Roof
- Recessed Lighting

**Burlingame (currently in Design)**



# Design Features to Enhance User Experience

Comfort, Accessibility, Lighting, etc.



Santa Clara Caltrain Station

# Design Features to Enhance User Experience

Comfort, Accessibility, Lighting, etc.



Santa Clara Caltrain Station



# Design Features to Enhance User Experience



- Architectural Treatment
- Mirrors
- Good Lighting

Santa Clara Caltrain Station

# Design Features to Enhance User Experience



- Convenient, direct access
- Artwork - Mural

California Avenue PUC (Palo Alto)



# Design Features to Enhance User Experience



## California Avenue PUC (Palo Alto)

# Design Features to Enhance User Experience



- Wide Undercrossing
- Good Lighting

Homer Avenue (Palo Alto)



# Design Features to Enhance User Experience

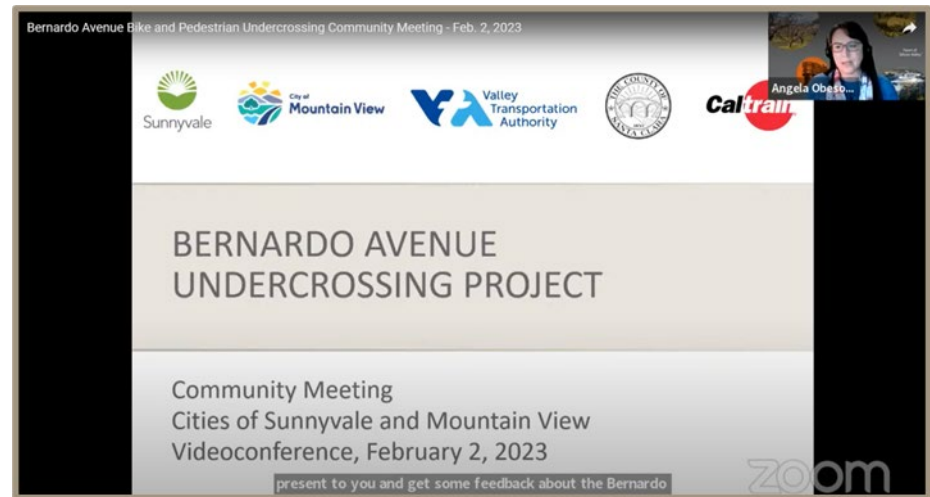


- Good Lighting
- Nice alternative to crossing El Camino Real

Stevens Creek Trail @ El Camino (Mountain View)

# Community Meeting, Feb. 2, 2023

- Significant outreach effort
- Very supportive of project
- Eastern Alternative preferred
  - Mid-crossing opening
  - Natural light
  - Less expensive
  - Drainage concerns
- Other comments:
  - Separation of bicyclists and pedestrians
  - Flatten ramp areas
  - Concerns about sharp turns
  - Protect ramp openings





# Mountain View BPAC Meeting, Feb. 22, 2023

- Very supportive of project
- Comments:
  - Most like midway opening
  - Ramp and tunnel widths
  - Connections to roadways
  - Compatibility with Evelyn Avenue plans
  - Prefer no bollards or chicanes
- Passed motion to recommend eastern alternative
  - 4 in favor
  - 1 abstention



# Tonight's Objective

---

## Primary Goal – Recommend Alternative

- Alternative Selection – Western or Eastern
- Project for environmental clearance
- Project footprint
  - ◆ Tunnel dimensions
  - ◆ Depth of tunnel
  - ◆ Length of ramps
  - ◆ Construction method options



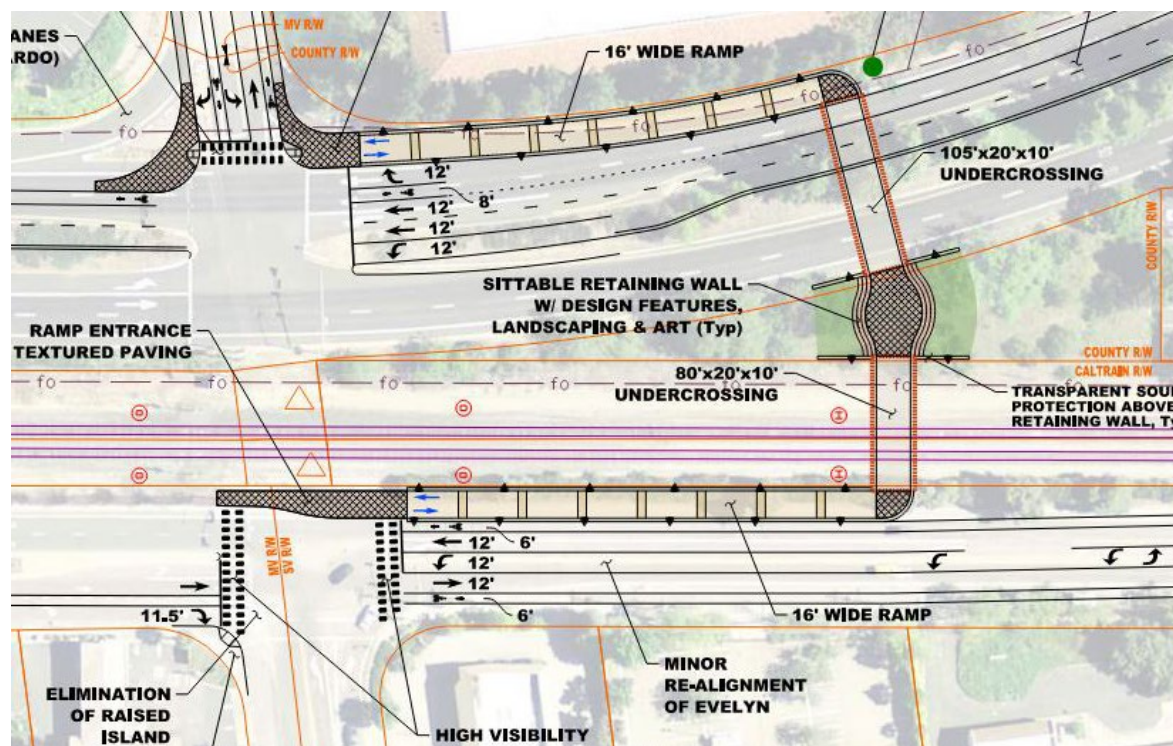
# Community Outreach for Determination of Preferred Alternative

---



# Staff Recommendation

Recommend to City Council the Selection of the Eastern Alignment as the Preferred Alignment of the Bernardo Avenue Undercrossing Project





# Q&A

---

Thank you!