

Council Member Orientation  
January 2015

# **Council's Role During An Emergency/Disaster**

# Tornado – May 4, 1998

## Emergencies & Disasters Happen



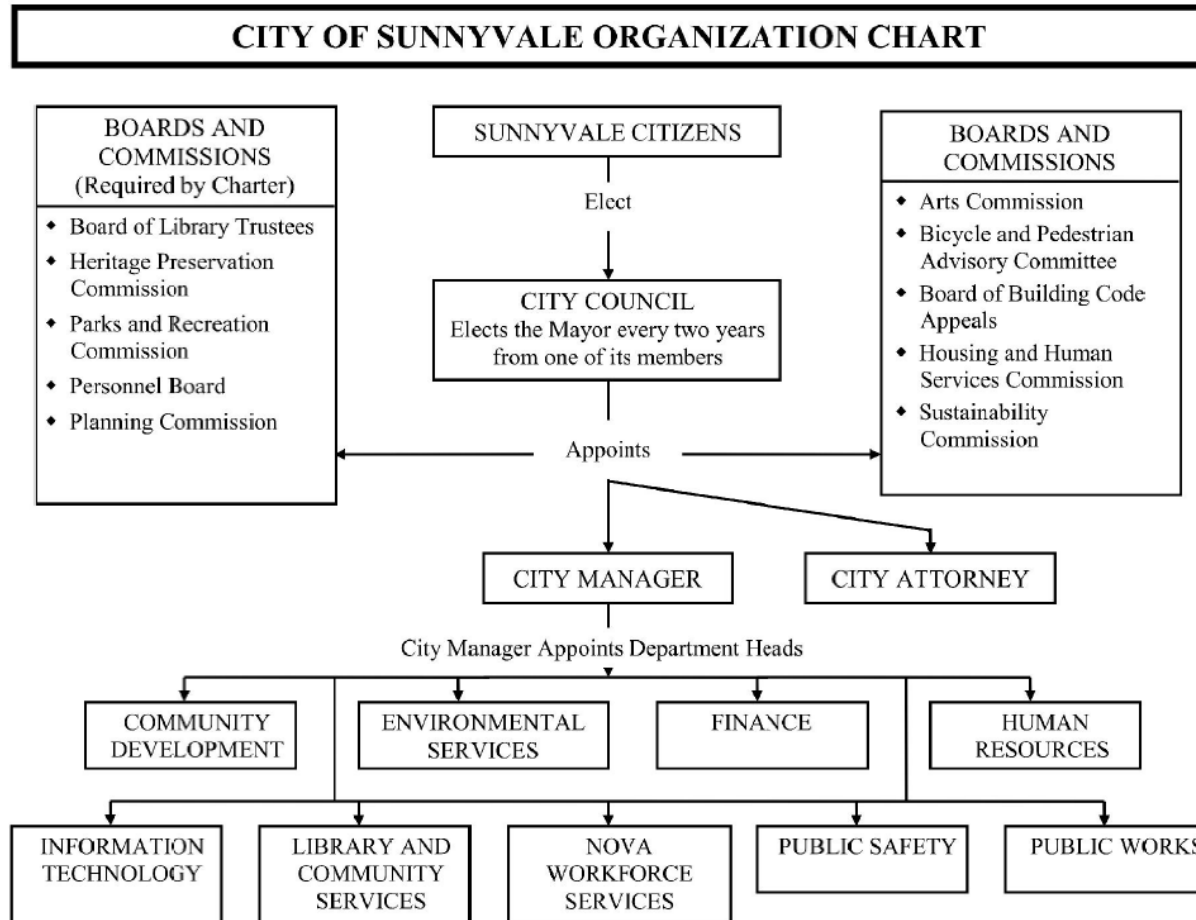
Special to the Chronicle / Greg Yannazzo

# Conditions or Degrees of Emergency

- State of War
- State of Emergency
- Local Emergency

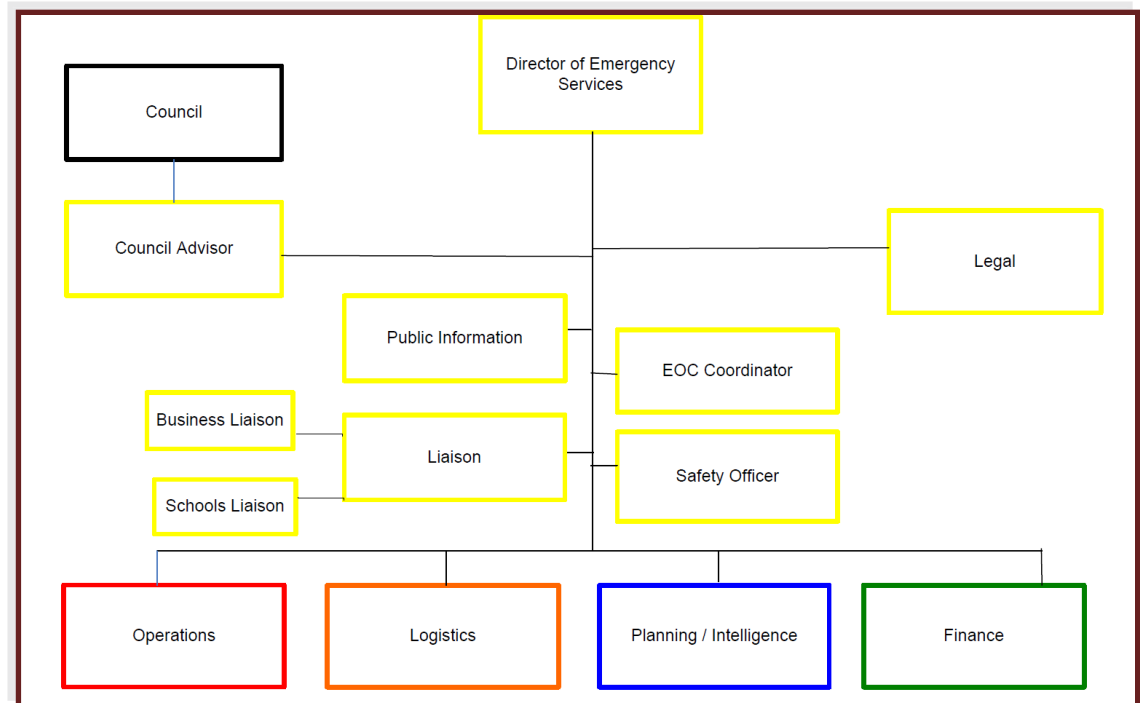
...conditions of disaster or of extreme peril to the safety of persons and within the territorial limits of the city...

# City of Sunnyvale Org. Chart



# Emergency Management Org.

- Alternate Organizational Structure
- Command Staff
- General Staff



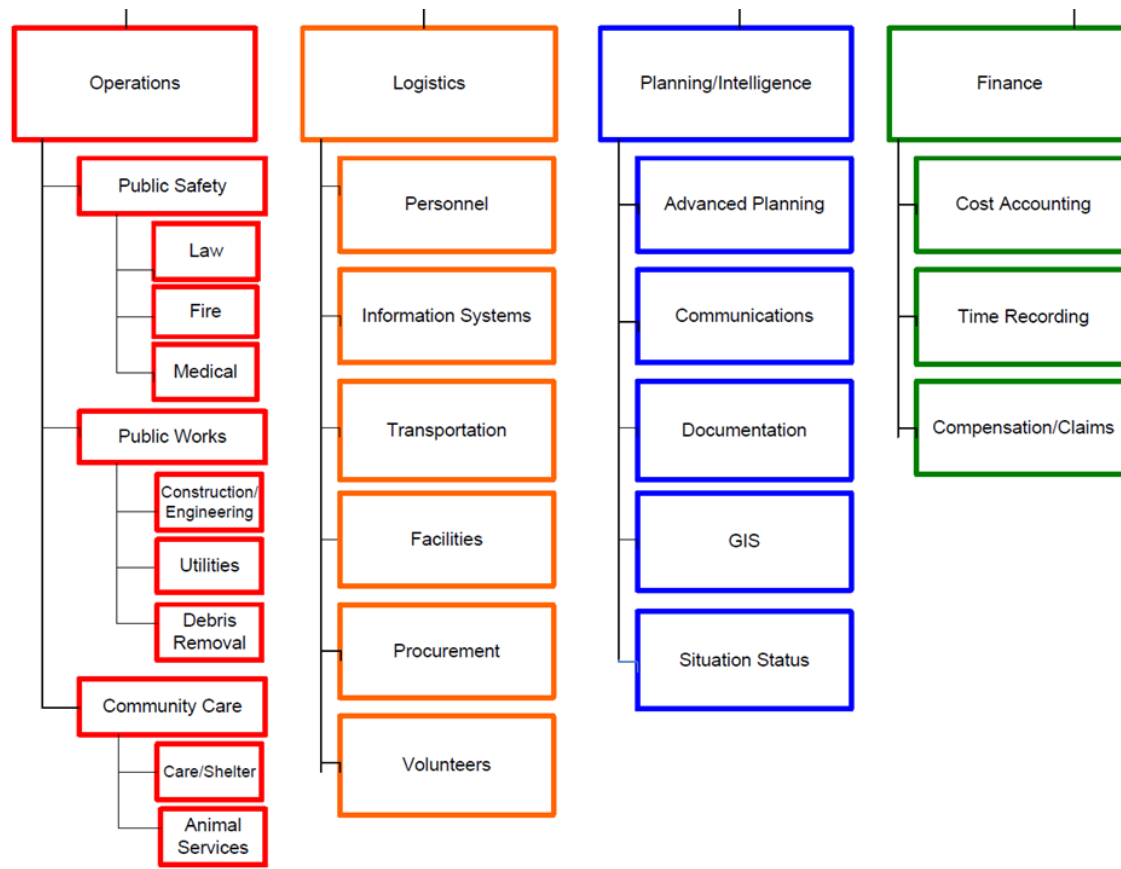
# City's Overall Objectives

## Emergency Response

---

- Save lives and minimize injuries
- Care for casualties
- Limit further damage to structures and the environment
- Recoup disaster related costs
- Implement public information
- Reassure and care for the public
- Restore City to normal operations

# EMO Assignments



- Assignments
  - By position
  - Goal is three deep
    - Teams
    - Shifts
      - Initial 12+ hours
      - Sustained TBD

# Sunnyvale's Operation Plan

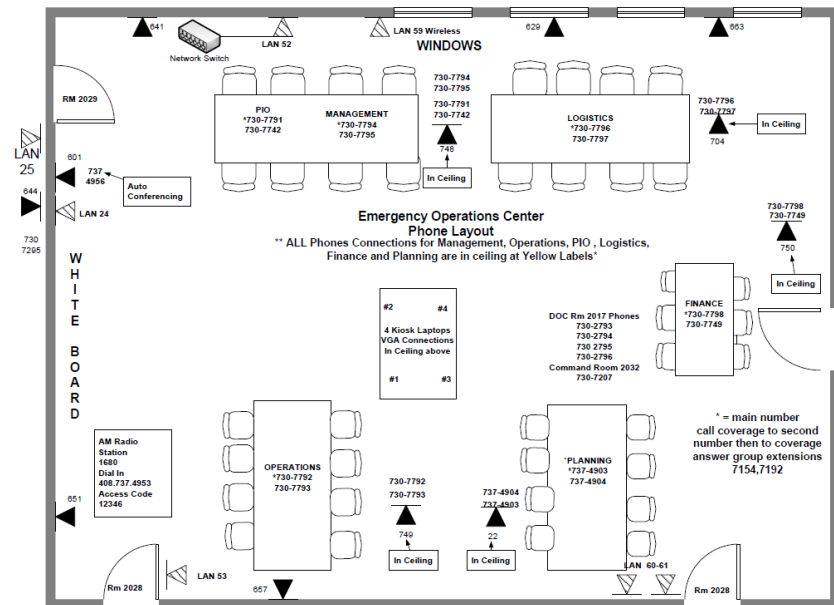
---

- Outlines the defined organizational structure and chain of command for emergency operations procedures
- Revised 2005
- Update will be completed by June 2015



# Emergency Operations Center

- Centralized location where key City staff come together to coordinate and manage the response and recovery phases of the emergency or disaster.

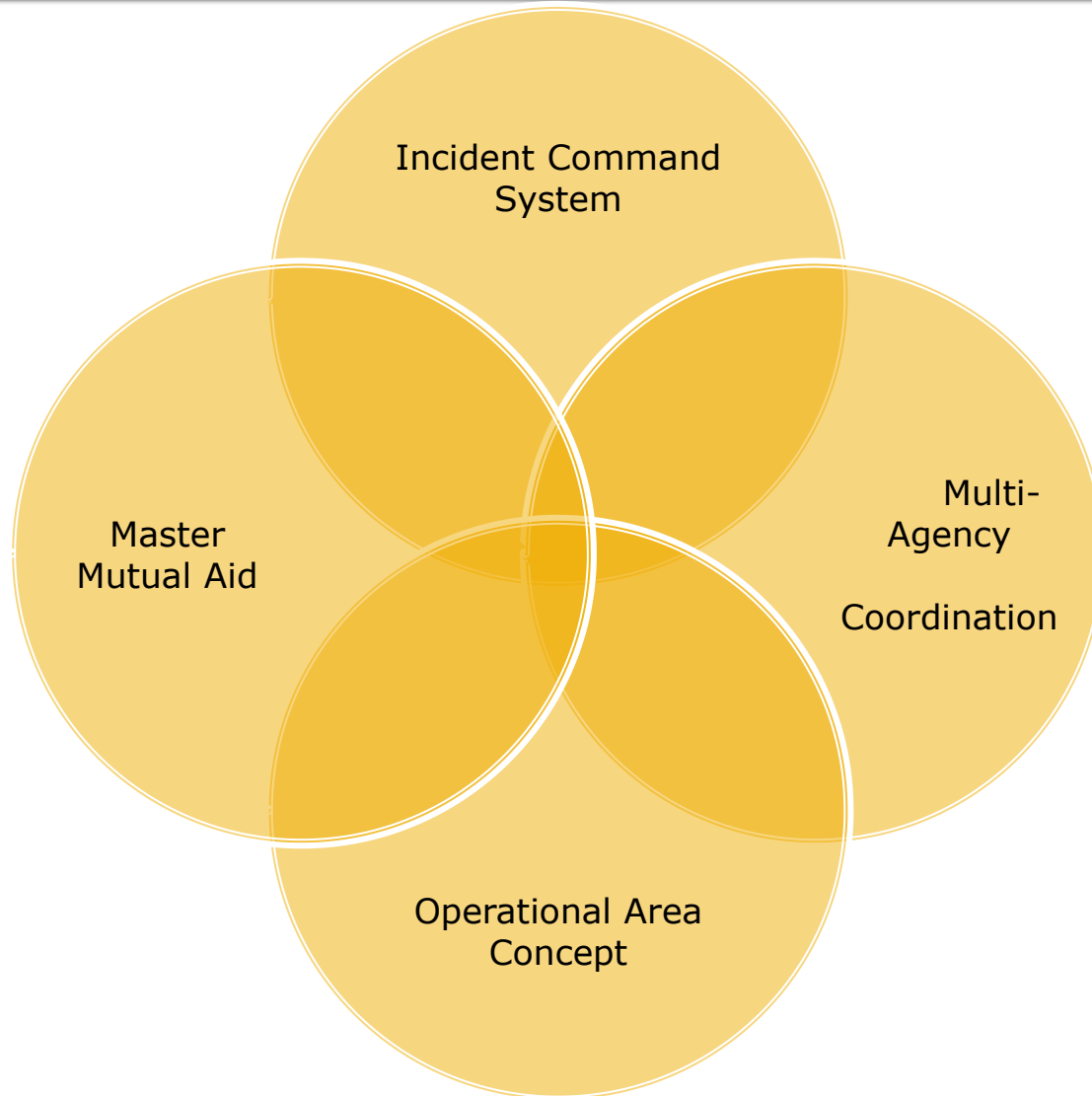


# Department Operations Center

- Designed to handle day to day Situation Awareness and localized events.



# Standardized Emergency Management Systems



# SEMS/NIMS Integration

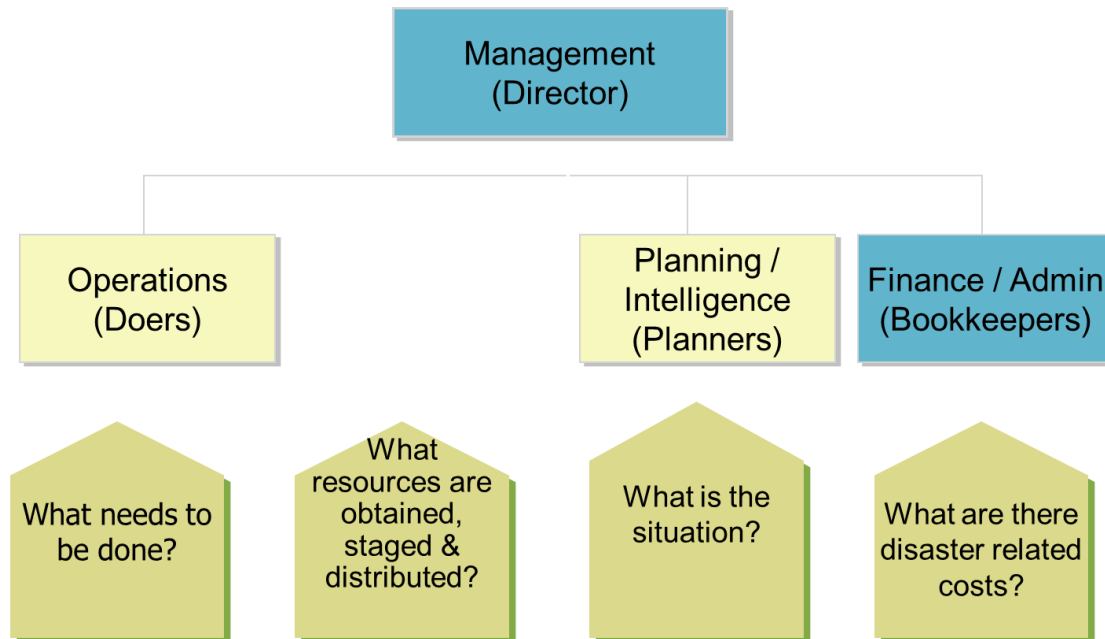
## ■ Purpose

Provide a consistent nationwide approach for federal, state, local, and tribal governments to work together more effectively and efficiently to prevent, prepare for, respond to, and recover from disasters, regardless of cause, size, or complexity



# Incident Command System

- A standardized emergency management tool designed to allow its users to adopt an organizational structure equal to the complexity and demands of a single or multiple incidents



# Council's Roles and Responsibilities

- Continuance of our local government
- Support the DES structure
- Unique role and asset as City Leaders
- Stay informed
- Communicate within established structure
- Symbol to ensure calm and confidence to citizens



# Council's Roles and Responsibilities

- If in session, adopt or declare emergency proclamations, resolutions and ordinances.
- Ratify the local emergency within seven days, whenever the Director of Emergency Services (City Manager or Assistant DES) has proclaimed the local emergency.
- Review the need for continuing a local emergency every fourteen days until the local emergency is terminated.
- Accompany VIPs and government officials on tours of the emergency/disaster area
- Reassure our residents that the City is actively responding to the situation and we will soon be back to normal

# Proclamation of Local Emergency Issued by

---

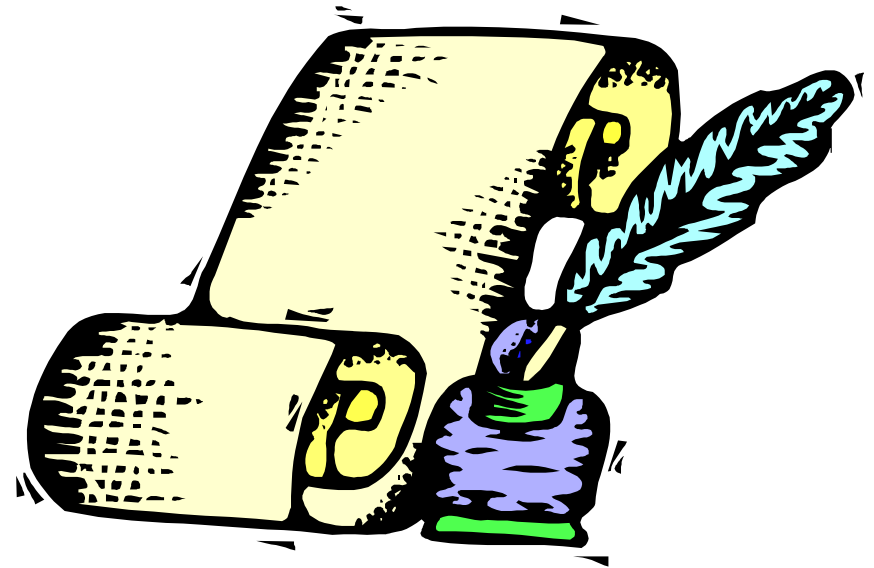
- Governing body of city, county, or city and county, or
- An official designated by an adopted local ordinance (e.g., police/fire chief, director of emergency services)



# Proclamation of Local Emergency

## Purpose

- Authorizes the undertaking of extraordinary police powers
- Provides limited immunity for emergency actions of public employees and governing bodies
- Authorizes the issuance of orders and regulations to protect life and property (e.g., curfews)



**Prerequisite for requesting a Governor's Proclamation and Presidential Declaration**

# Proclamation of Local Emergency Requirements

- **Deadlines:**
  - **Issuance:** Within 10 days if assistance will be requested through the California Disaster Assistance Act (CDAA)
  - **Ratification:** If issued by official designated by ordinance, must be ratified by City Council within 7 days
- **Renewal:**
  - Reviewed at regularly scheduled board/council meetings until terminated
  - Reviewed every 14 days for governing bodies that meet weekly until terminated
  - No review to exceed 21 days from last review
- **Termination:**
  - When conditions warranting proclamation have ended including the Responses Phase as well as the Recovery Phase

# Levels of Disaster Assistance

---

- Director's Concurrence (State OES)
- Governor's Proclamation
- Presidential Declaration of an Emergency
- Presidential Declaration of a Major Disaster

# Resource Request

## Master Mutual Aid Agreements

	Federal	
	State	
	Region	
	Operational Area	
↑	Field (Immediate Neighbors)	↑

# Power and Authority of DES

## Director of Emergency Services (DES)

---

- Request the city council to proclaim the existence or threatened existence of a “local emergency”
- Request the Governor to proclaim a “state of emergency”
- Make and issue rules and regulations on matters reasonably related to the protection of life and property
- Obtain vital supplies, equipment, and such other properties found lacking and needed for the protection of life and property
- Require emergency services of any city officer or employee

# Emergency Preparedness

- Sit down with your family and discuss an emergency plan
  - Household Hazards
  - Emergency Supplies
  - Meeting Place
  - Out of the Area Phone Contact



# Social Media



Media monitored and used by the City

- Twitter
  - City – 4,755 followers
  - DPS – 3,430 followers
- Facebook – 10,000 likes
- Nixle – 3,855 subscribers
- NextDoor – >10,500 members

# Existing Laws and Policy

---

- Robert T. Stafford Act (Federal)
- California Disaster Assistance
- Emergency Management Compact Assistance
- CA Emergency Services Act



# Existing Law & Policy

- *Government Code §3100*
  - Cities have to be as prepared as possible to meet emergencies
- *Government Code §8568*
  - Cities must take such action as may be necessary to carry out the State Emergency Plan
- *Municipal Code §2.16*
  - City is required to develop an Emergency Plan
- *Emergency Plan*
  - Describes Organizational and Operational Concepts
  - Describes Emergency Response Functions of the EMO
- *Seismic & Safety Sub-Element*
  - Ensure that the City, its citizens and its businesses... are prepared to effectively respond to major emergencies.

QUESTIONS