



City of Sunnyvale

Notice and Agenda

Arts Commission

Wednesday, April 16, 2014

7:00 PM

Neighborhood Room - Recreation
Building, Sunnyvale Community Center,
550 E. Remington Drive, Sunnyvale, CA
94087

CALL TO ORDER

SALUTE TO THE FLAG

ROLL CALL

PRESENTATION

[14-0433](#) Review of City Budget Process (Finance Department)

PUBLIC ANNOUNCEMENTS

Speakers are limited to 3 minutes for announcements of related board/commission events, programs, resignations, recognitions, acknowledgments.

CONSENT CALENDAR

1.A. [14-0426](#) Draft Minutes of the March 19, 2014 Arts Commission Meeting

PUBLIC COMMENTS

This category is limited to 15 minutes, with a maximum of three minutes per speaker. If you wish to address the commission, please complete a speaker card and give it to the Recording Secretary or you may orally make a request to speak. If your subject is not on the agenda, you will be recognized at this time; but the Brown Act (Open Meeting Law) does not allow action by commission members. If you wish to speak to a subject listed on the agenda, you will be recognized at the time the item is being considered by the commission.

PUBLIC HEARINGS/GENERAL BUSINESS

2 [14-0380](#) Courtyard by Marriott/T2 Development Public Art Component

Recommendation: Alternative 1: Approve the artwork as it is proposed.

NON-AGENDA ITEMS & COMMENTS

-Commissioner Comments

-Staff Comments

INFORMATION ONLY REPORTS/ITEMS

[14-0434](#)

Hands on the Arts, May 17, 2014

ADJOURNMENT

Notice to the Public:

Any agenda related writings or documents distributed to members of this meeting body regarding any item on this agenda will be made available for public inspection in the originating department or can be accessed through the Office of the City Clerk located at 603 All America Way, Sunnyvale, CA. during normal business hours and at the meeting location on the evening of the commission meeting, pursuant to Government Code §54957.5.

Agenda information is available by contacting Anna Lewis at alewis@sunnyvale.ca.gov or (408) 730-7336. Agendas and associated reports are also available on the City's web site at <http://sunnyvale.ca.gov> or at the Sunnyvale Public Library, 665 W. Olive Ave., Sunnyvale, 72 hours before the meeting.

Pursuant to the Americans with Disabilities Act, if you need special assistance in this meeting, please contact Anna Lewis at (408) 730-7336. Notification of 48 hours prior to the meeting will enable the City to make reasonable arrangements to ensure accessibility to this meeting. (29 CFR 35.106 ADA Title II)



City of Sunnyvale

Agenda Item

14-0433

Agenda Date: 4/16/2014

Review of City Budget Process (Finance Department)



City of Sunnyvale

Agenda Item

14-0426

Agenda Date: 4/16/2014

Draft Minutes of the March 19, 2014 Arts Commission Meeting



City of Sunnyvale

Meeting Minutes - Draft Arts Commission

Wednesday, March 19, 2014

7:00 PM

Neighborhood Room - Recreation
Building, Sunnyvale Community Center,
550 E. Remington Drive, Sunnyvale, CA
94087

CALL TO ORDER

SALUTE TO THE FLAG

ROLL CALL

Present: 3 - Commissioner Suzanne Moshier
Chair Misuk Park
Commissioner Shawnte Santos
Absent: 1 - Commissioner Vinita Karun

PUBLIC ANNOUNCEMENTS

None

CONSENT CALENDAR

1.A. 14-0361 Approval of Draft Minutes of February 19, 2014 Arts
Commission Meeting

Chair Park requested an amendment to reflect the Commissioner's suggestion of a fundraiser "at Hands on the Arts," deleting the words "in May."
Commissioner Santos motioned to approved the minutes as amended,
Commissioner Moshier seconded the motion. Approved unanimously.

PUBLIC COMMENTS

None

PUBLIC HEARINGS/GENERAL BUSINESS

2 14-0359 Jay Paul Company/Moffett Place Public Art Component

Visual Arts Coordinator, Kristin Dance introduced the Architect Tom Gilman,
and the Artist Cliff Garten.

It was noted that Mr. Gilman also designed the nearby property at Moffett

Towers. He described the Moffett Place project as a 53 acre complex spanning over Bordeaux Drive. It is designed to include public walkways that connect nearby neighborhoods to the Lockheed Light Rail Station. Thirty-nine percent of the space is usable green space and public easement.

Mr. Garten described his approach to public art, which is to create a space that accommodates usable public spaces with sculpted landscape in conjunction with art elements. Mr. Garten presented the art, which is located in the plazas and public intersections of the Moffett Place complex. The art will include fountains, illuminated sculptures, screens and functional art including benches, tables and waste receptacles. Grasses and landscaping are designed, and will be maintained to enhance and complement the art.

Mr. Garten answered Commissioner's questions. Commissioner Santos noticed a waste receptacle incorporated into a plaza and inquired about recycling can options. Commissioner Moshier inquired about shade over the cement benches as they could become hot and unusable during days with high temperatures. Commissioner Park requested more detail about decomposed granite. Chair Park inquired about the decision to use concentric patterns. She inquired if the high garden, a private area, will include art. Chair Park likes that the scope of the project is integrated into one uniform vision. She stated the plans are gorgeous and go above and beyond expectations. Commissioner Moshier inquired about the technique to move olive trees into the grove. Commissioners agreed that keeping existing trees aligns with Sunnyvale community values.

Chair Park opened the public hearing. As there were no public comments, she closed the public hearing at 7:55 p.m.

Commissioner Santos motioned to approve the art as proposed with the condition that the developer submit a completed lighting plan for the approved artwork to the Visual Arts Coordinator for review prior to installation of the artwork. Commissioner Park seconded the motion. Approved unanimously.

Commissioners provided their voting rationale:

Commissioner Santos stated it is a huge project and likes that it uses a consistent vocabulary throughout the entire campus. It includes thoughtful elements in each piece of art. She likes that usability is taken into consideration, and that an emphasis was put into creating a welcoming design. The plans accomplish the difficult task of exhibiting art and creating a landscape to complement it, resulting in a design that fits into the surrounding

environment.

Commissioner Moshier stated she loves the integration of art into an area the public will enjoy. She indicated it is unfortunate when art disappears behind a gate where the public is unable to see it. She likes that there are contingency plans for the benches and fountains. She appreciates there is an emphasis on comfort. She thinks it is a wonderful plan and looks forward to seeing it.

Commissioner Park stated it is a very ambitious project and she believes it is on the right track to success. The Moffett Place project meets the criteria of Sunnyvale's Art in Private Development requirements and it is well thought out. One of the most important criteria is that the public has access to the art. She appreciates the extra consideration to place the art where the public receives the maximum impact from the art. She really likes the containers of light, which hold sunlight. She stated this kind of space is valuable to renew an urban area.

Commissioners, the developer, and the artist gave Ms. Dance accolades for support and knowledgeable guidance in the process.

3 14-0360 Election of Vice Chair

Commissioner Moshier nominated Commissioner Santos for Vice Chair. Commissioner Santos accepted the nomination. Chair Park closed nominations and asked for a vote.

The vote was unanimous to appoint Commissioner Santos as Vice Chair.

Yes: 3 - Commissioner Moshier
Chair Park
Commissioner Santos

No: 0

Absent: 1 - Commissioner Karun

NON-AGENDA ITEMS & COMMENTS

COMMISSIONER ORAL COMMENTS

Chair Park attended the CPRS awards dinner and congratulated Tegan McLane and the Department of Library and Community Services for being recognized for the LED lighting in the Theatre.

STAFF ORAL COMMENTS

Community Services Manager Tegan McLane updated the Commission on the Theatre lighting project, as five organizations have toured the Theatre to consider LED lighting in their respective venues.

Ms. McLane provided an update of the property owner's address for the BBVC Compass Bank building in response to the Commissioners request.

Ms. McLane announced that the Hands on the Arts event will be held on May 17, 2014 from 10 a.m. - 4 p.m. Commissioners are welcome to volunteer. Volunteer forms are available online at HandsOnTheArts.inSunnyvale.com

Ms. Dance provided information about two upcoming AIPD projects, one on El Camino and the second on the corner of Maude and Mathilda.

INFORMATION ONLY REPORTS/ITEMS

None

ADJOURNMENT

8:19 p.m.



City of Sunnyvale

Agenda Item

14-0380

Agenda Date: 4/16/2014

REPORT TO ARTS COMMISSION

SUBJECT

Courtyard by Marriott/T2 Development Public Art Component

BACKGROUND

Under the City's Art in Private Development Ordinance, the Courtyard by Marriott project at 660 El Camino Real is required to provide public art. The public art component must be equal in value to 1 percent of the building permit valuation. The procedure established for reviewing the artwork is as follows:

- 1) Review the artist's background to ensure he/she has the experience and knowledge to design, fabricate and install a large-scale artwork;
- 2) Review the artwork itself to determine whether or not the nature and style of the artwork is appropriate to the architecture and site;
- 3) Determine whether or not the proposed artwork is appropriate in scale for the overall development; and
- 4) Review the location of the artwork for visibility to the public.

The purpose of this memo is to provide information about the proposed artwork and to request Arts Commission approval of the final design. The City Council is not scheduled to consider this item. Under the Art in Private Development Ordinance the Arts Commission is authorized to make a final determination of the proposed artwork. The Commission's decision may be appealed to the City Council by the developer.

EXISTING POLICY

Municipal Code

Chapter 19.52. Required Artwork in Private Developments

The purpose of this chapter is to regulate and establish standards for inclusion of publicly visible artworks in development projects which are either large in scale or have unique visual impacts due to their location on principal avenues of travel or at landmark intersections characterized as areas of concentrated public activity (Ordinance 2623-99 § 1 (part): Prior Zoning Code § 19.49.010).

Arts Sub-Element

Policy E.1.: Encourage alternative funding sources, funding strategies and incentives to provide and encourage the provision of art in public and private development.

Policy E.2.: Provide and encourage the incorporation of art, both functional and decorative, in public

and private development.

Community Design Sub-Element

Policy A.1: Identify the boundaries of the City with attractive and distinctive features.

Policy A.1.d: Continue to develop a comprehensive gateway improvement program to select major gateways for improvements such as special landscaping, signage, visitor information centers, patterned pavement, monuments or artwork and unique private development standards.

Policy A.3: Support measures which enhance the identity of special districts and residential neighborhoods to create more variety in the physical environment.

Policy A.3.e: Encourage new landmarks and features to distinguish districts and neighborhoods.

DISCUSSION

Project: T2 Development is building a new four-story, 145-room Courtyard by Marriott. The hotel will be L-shaped and situated directly adjacent to El Camino Real. Parking for the site will be behind the hotel, with a single vehicular entrance from El Camino Real. There will also be a pedestrian entrance from El Camino Real right of way into the main lobby.

This site is the former home of Sunnyvale Chevrolet. It is bordered on the south by a new residential development, to the east and west by a mixture of commercial and residential development, and to the north by the Sunnyvale Civic Center. (Attachment 1 - Street Map)

Artwork Location: The selected location for the proposed artwork is along the El Camino Real on either side of the main pedestrian entrance to the hotel. (Attachment 2 - Site Map and Attachment 3 - Elevation Plan with Proposed Artwork) This location is set back approximately 15 feet from El Camino Real. Foot traffic in the area has traditionally been limited, but it is expected to increase once the hotel is occupied. Staff also anticipates a large volume of vehicular traffic traveling along El Camino Real.

Selected Artist: The artist selected for this project is Southern California artist Cliff Garten. (Attachment 4 - Artist's Resume) Mr. Garten has been active in the public art arena since 1998. He has received civic commissions for major U.S. cities such as: Fort Worth, Texas; Scottsdale, Arizona; Madison, Wisconsin; Santa Monica, California; Cleveland, Ohio; Saint Paul, Minnesota; and Salt Lake City, Utah. Locally, Mr. Garten has major public commissions at the Tully Library in San Jose; Laguna Honda Hospital in San Francisco; and the Veterans Memorial Plaza, Walnut Creek. In 2012, Mr. Garten completed a large environmental sculpture installation as part of the Moffett Towers project in north Sunnyvale.

Mr. Garten was also approved by the Commission as the project artist for the Moffett Place project at the March 2014 Arts Commission meeting.

Images of Mr. Garten's installations and sculpture environments can be found at cliffgartenstudio.com.

Artwork Proposal: For this project, the artist has designed two stainless steel sculptures that will be located on either side of the steps leading from El Camino Real to the hotel lobby. (Attachments 5, 6

and 7 - Computer Renderings of Proposed Artwork) The sculptures mimic a classical vessel form and are meant to formalize the main entryway from El Camino Real to the hotel.

Standing 11' tall, the sculptures are made of 3/8" stainless steel rods that are hand molded and spaced so that the vessel form is transparent. The first 5' of each sculpture rises from a solid stainless steel hexagonal pedestal into a vase-like body. At the midpoint of this body the rods begin to twist, rotating 180 degrees to the top of the sculpture. As the rods twist upward, the form's transparency allows the rods on the opposite side of the form to create a moiré pattern. This pattern becomes more interesting in changing sunlight or when illuminated with colored light at night.

During the day the sculptures will reflect and refract natural sunlight. At night they will be up-lit with four colored LED lights located in the base of the sculpture. Because of the transparency of the form, the sculptures will appear to be illuminated from within. The colors will slowly change, creating a light show for viewers. The light show will be programmed and controlled from within the hotel and can be changed for special events or holidays.

Lighting: The developer is proposing to up-light each sculpture on all four sides from the ground level with LED lights.

Maintenance: Maintenance for the proposed artwork will be minimal. The sculptures should be pressure washed annually to remove dirt buildup. The LED lights will need to be changed every five years.

FISCAL IMPACT

If approved, the developer will be responsible for design, fabrication and installation costs of the artwork, as well as ongoing maintenance. There is no fiscal impact on the City's operating budget other than incidental staff time to monitor the project, which is budgeted in the Art in Private Development Program.

PUBLIC CONTACT

Public contact was made by posting the Arts Commission agenda on the City's official-notice bulletin board in the Library and Senior Center. The agenda and full report were posted on the City's Web site and in the Recreation Center at the Community Center.

ALTERNATIVES

1. Approve the artwork as it is proposed.
2. Not approve the artwork as it is proposed.

RECOMMENDATION

Alternative 1: Approve the artwork as it is proposed.

Prepared by: Kristin Dance, Visual Arts Coordinator

Reviewed by: Tegan McLane, Arts and Marketing Manager

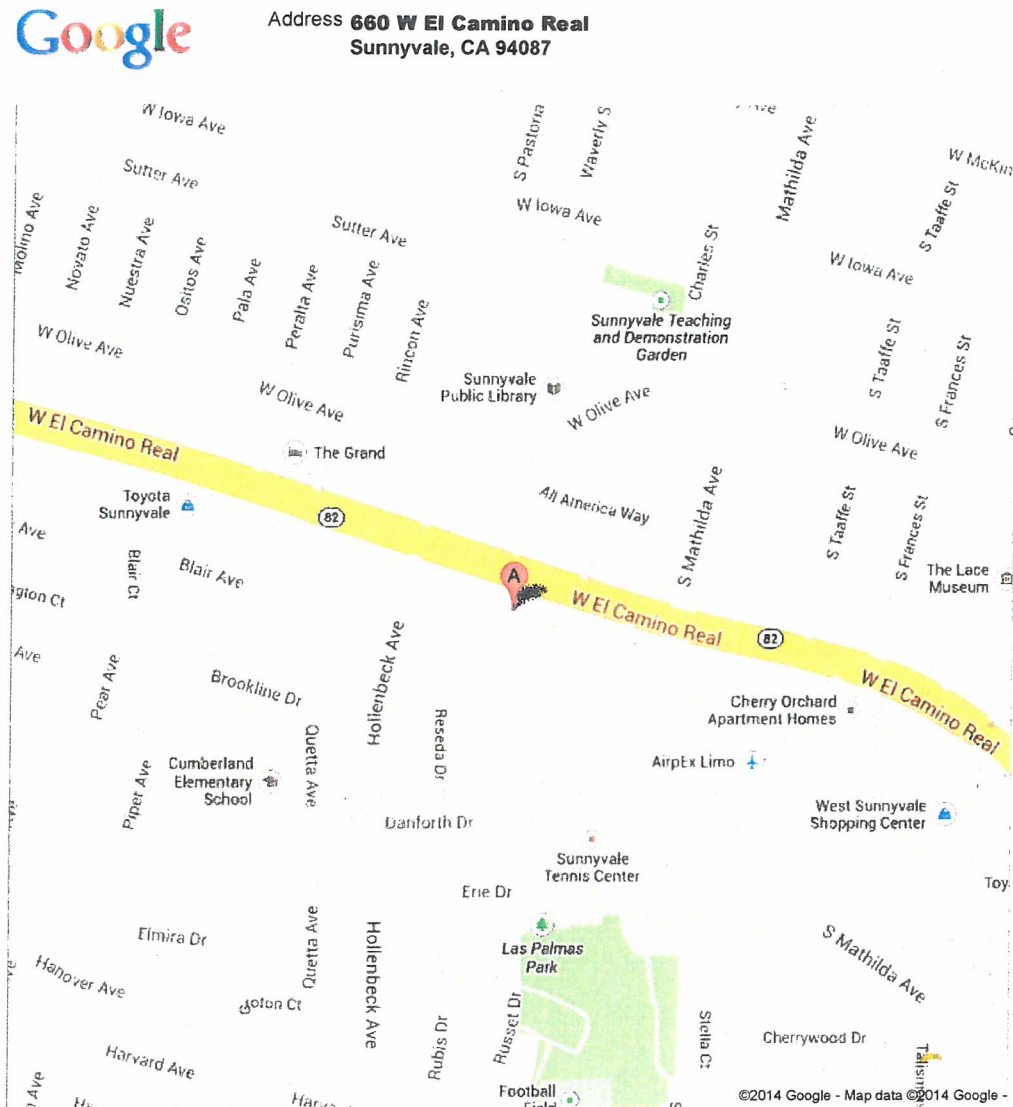
Approved by: Daniel Wax, Superintendent of Community Services

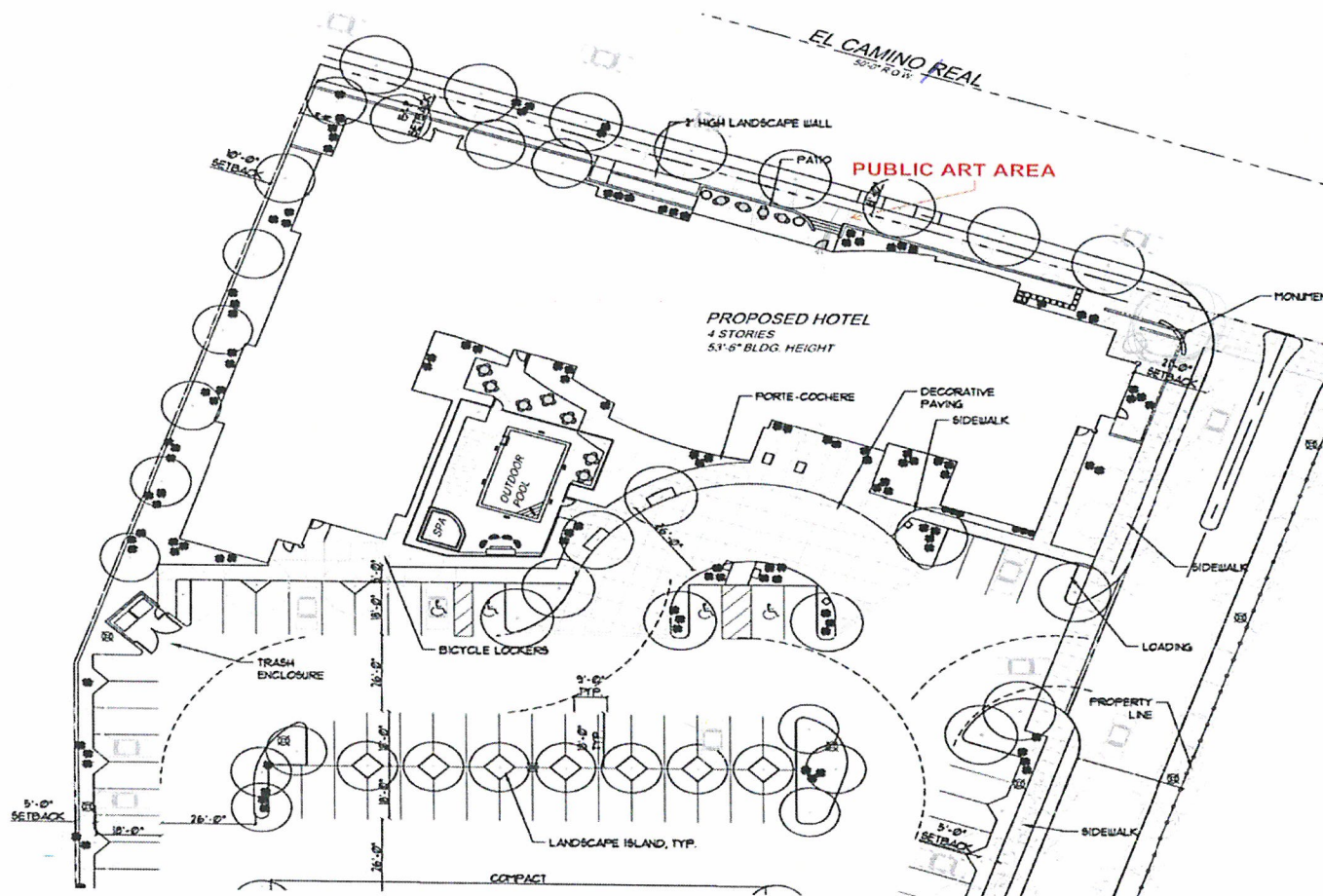
Cc: Lisa Rosenblum, Director, Department of Library and Community Services

ATTACHMENTS

1. Street Map

2. Site Map
3. Elevation Plan with Proposed Artwork
4. Artist's Resume
5. Computer Rendering of Proposed Artwork (detail)
6. Computer Rendering of Proposed Artwork (from street)
7. Computer Rendering of Proposed Artwork (from sidewalk)





Sunnyvale: plan view of confirmed art location





Cliff Garten Studio

310.392.2060 TEL

310.392.2062 FAX

1315 Preston Way

Venice

California

USA

90291

project:
T2 SUNNYVALE

SCULPTURE ELEVATION

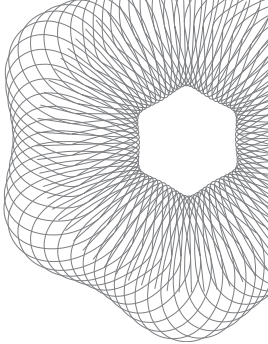
project number:
1313date:
March 27, 2014scale:
NTS

sheet:

1.0

CLIFF GARTEN RESUME

+ CLIFF GARTEN STUDIO
cg@cliffgartenstudio.com
1315 PRESTON WAY VENICE, CA 90291
T. 310.392.2060



SELECTED CIVIC SCULPTURE

Even Flow, Dulles Airport Silver Line, Dulles Airport + Metro Rail Station, Washington, D.C., 2016. Public Art Washington Metropolitan Area Transit Authority

Ethereal Bodies 8, San Francisco General Hospital, San Francisco, CA, 2015. Commissioned by the San Francisco Arts Commission.

Los Angeles Opens its Heart of Compassion, The Vermont Building, Los Angeles, California, 2014. Commissioned by JH Snyder Co.

Middens, Clearwater Downtown Boat Slips & Promenade, Clearwater, FL, 2014. Commissioned by City of Clearwater Public Art & Design Program.

Infinity, Cerritos City Hall Campus and Sculpture Garden, Cerritos, CA, 2014. Commissioned by the City of Cerritos.

Moffett Place, Public Art Master Plan for Landscape Sculpture, Earthworks, Granite and Bronze Fountains, Moffett Towers Office Park, Sunnyvale, California, ongoing. Commissioned by the City of Sunnyvale, % for Art Program and the Jay Paul Company.

Corridor of Light, Lighting Infrastructure Plan for North Lynn Street Public Art Initiative, District of Rosslyn, Arlington, VA, ongoing. Commissioned by Arlington County Public Art, Cultural Affairs Division of the Department of Parks, Recreation, and Cultural Resources, Rosslyn Renaissance and Rosslyn Business Improvement District.

Luminous Crossings, Gateway Station for the 7th Avenue Light Rail Corridor, Calgary, Alberta, Canada, 2013. Commissioned by the City of Calgary.

Ribbons, 50 United Nations Plaza, San Francisco, CA, 2013. Commissioned by the General Services Administration, Program in Art and Architecture.

Receptor, Patriot Ridge, adjacent to the Topographic National Geospatial-Intelligence Agency, Springfield, VA, 2013. Commissioned by Corporate Office Properties Trust.

Baldwin Hills Gateway, Ken Hahn State Recreation Area, Los Angeles, CA, 2013. Commissioned by Baldwin Hills Conservancy. Project administered by Los Angeles Neighborhood Initiative (LANI).

Blue Eclipse Entry Plaza and Rotunda Lobby at the Palo Alto Division Building 520. Palo Alto, CA, 2012. Commissioned by the Department of Veterans Affairs, Palo Alto Health Care System.

Bullet and Suspect, Denver Crime Lab, Denver, CO, 2012. Commissioned by the Denver Office of Cultural Affairs’ Public Art Program.

Needle and Spindle, Village Gate ARTWalk 2, Rochester, NY, 2012. Commissioned by The City of Rochester, New York.

Elaia, El Cariso Community Regional Park Gymnasium and Community Center, Sylmar, CA, 2012. Commissioned by Los Angeles County Arts Commission’s Civic Art Program.

Rhytons, Zachary Scott Theatre, Austin, TX, 2012. Commissioned by City of Austin Art in Public Places.

Dubliner, Dublin Transit Center, Dublin, CA, 2012. Commissioned by the City of Dublin.

NeuroStar, University of Utah - James L. Sorenson Molecular Biotechnology Building, Salt Lake City, UT, 2011. Commissioned by the Utah Arts Council, Utah Public Art Program.

Levine Lanterns, Illuminated Sculptures for Levine Center for the Arts, Charlotte, NC, 2011. Commissioned by the Arts & Science Council, Public Art Program Charlotte ,Mecklenburg and the Levine Foundation.

Tower II, Cityplace, Dallas, TX, 2011. Commissioned by Oak Creek Partners, Ltd. Gifted to the City of Dallas.

Mesquite Columns, Mesquite City Hall, Mesquite, TX, 2011. Commissioned by the City of Mesquite.

Elevations (1), Martin Luther King Center for Public Health, Los Angeles, CA, 2011. Commissioned by the Los Angeles County Arts Commission’s Civic Art Program.

Schooling, University of Rhode Island Graduate School of Oceanography, Narragansett, RI, 2011. Commissioned by Rhode Island State Council of the Arts, % for Art Program.

Sea Spires, Long Beach, CA, 2011. Commissioned by the Long Beach Transit Authority.

Sentient Beings, Art Institute of California, North Hollywood, CA, 2009. Commissioned by the Community Redevelopment Agency of Los Angeles, Art Program, and the JH Snyder Co.

Flowers of the Klamath Basin Suite of Seven Digital Archival Prints, Oregon Institute of Technology, Dow Hall Center for Health Professionals, Klamath Falls, OR, 2009. Commissioned by the Oregon Arts Commission.

Mad Hatter, Sacramento Valley High Library, Sacramento, CA, 2009. Commissioned by the Sacramento Metropolitan Arts Commission.

Nano Plaza, Engineering Building II Plaza, University of Texas at San Antonio, San Antonio, TX, 2009. Commissioned by the University of Texas at San Antonio, Art on Campus Program.

CLIFF GARTEN RESUME

SELECTED CIVIC SCULPTURE (Continued)

YMI Chandeliers, YMI Jeans, Los Angeles, CA 2009. Commissioned by YMI Jeanswear.

Moffett Towers, Public Art Master Plan for Landscape Sculpture, Earthworks, Granite and Bronze Fountains, Moffett Towers Office Park, Sunnyvale, CA, 2009. Commissioned by the City of Sunnyvale, % for Art Program and the Jay Paul Company.

Sea Songs, Santa Monica Parking Structures 2, 4, and 5, Third Street Promenade, Santa Monica, CA, 2009. Commissioned by City of Santa Monica, Public Art Program.

Avenue of Light, Lancaster Avenue Median Illuminated Sculptures, Ft. Worth, TX, 2009. Commissioned by the City of Fort Worth and Fort Worth Public Art.

Strings, University of Wisconsin School of Medicine and Public Health Interdisciplinary Research Center, Madison, WI, 2009. Commissioned by the Wisconsin Arts Board.

Laguna Line (The possibility of the everyday), Laguna Honda Hospital, San Francisco, CA, 2009. Commissioned by the San Francisco Arts Commission.

Three Luminous Bodies, Central Phoenix/East Valley Light Rail Transit, Baseball Park and Symphony Train Platforms, Phoenix, AZ, 2009. Commissioned by Valley Metro Rail, Art Program.

Stitches, South Boulevard Corridor Infrastructure Project, Sharon Rd. West and South Boulevard, Charlotte, NC, 2009. Commissioned by the Arts & Science Council Public Art Program, Charlotte, Mecklenburg.

Sign Language, Euclid Corridor Transportation Project, Cleveland, OH, 2006. Commissioned by Cleveland Public Art.

Making Tracks, The Olympic Legacy Gateway Project, Highway 224, Park City, UT, 2005. Commissioned by the Olympic Legacy Committee, Park City Utah.

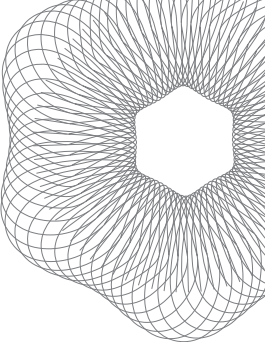
Sonoran Suite, CAP Basin Sports and Community Park, Scottsdale, AZ, 2005. Commissioned by the Scottsdale Public Art Program.

Sammamish Meander, York Bridge Replacement Project, Redmond, WA, 2005. Commissioned by 4 Culture and the King County Division of Roads and Bridges.

Walnut Creek Veterans’ Memorial, City Hall Block, Walnut Creek, CA, 2004. Commissioned by City of Walnut Creek Public Art Program in cooperation with the City of Walnut Creek.

ATTACHMENT 4

+ CLIFF GARTEN STUDIO
cg@cliffgartenstudio.com
1315 PRESTON WAY VENICE, CA 90291
T. 310.392.2060



Two Clouds, San Jose Public Library, Tully Road Branch, San Jose, CA, 2004. Commissioned by Office of Cultural Affairs Public Art Program, City of San Jose.

Harbor View, Illuminated Sculptures, Victory Park, Long Beach, CA, 2002. Commissioned by Camden Development, Newport Beach, California.

California Song, Fountain and Park, Block 225, Capitol Area East End Complex, Sacramento, CA, 2002. Commissioned by the State of California, Capitol Area East End Complex, Sacramento, California.

Salt Lake Vignettes, 2002 Olympics, Salt Lake City, UT, 2002. Commissioned by the Salt Lake City Arts Council.

Prairie Ice, University of Minnesota-Morris, Math and Science Building, Morris, MN, 2001. Commissioned by Public Art on Campus, University of Minnesota.

Arcade Street Bridge, Little Canada and Maplewood, MN, 2000. Lead Artist with Metropeligo Urban Design. Commissioned by Ramsey County Public Works, Administered by Public Art St. Paul.

New Environments for Healing, Laurance S. Rockefeller Outpatient Pavilion, Memorial Sloan Kettering Cancer Center, New York, NY, 1999. Lead Artist with Perkins+Will New York. Commissioned by Memorial Sloan Kettering Cancer Center, New York, NY.

Central Union Terminal Renovation Project, Toledo, OH, 1997. Commissioned by the City of Toledo, Ohio.

Duluth Trilogy, Lake Superior College, Duluth, MN, 1996. Commissioned by the Minnesota Percent for Art in Public Places.

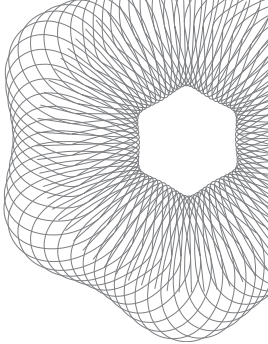
A Garden for Coyote, Coyote Ridge Correction Facility, Connell, WA, 1996. Commissioned by Art in Public Places, Washington State Arts Commission.

Biotechnology and Genetics Center, University of Wisconsin, Madison, WI, 1995. Commissioned by the Wisconsin State Arts Board.

The Saint Paul Cultural Garden, St. Paul, MN, 1992. Commissioned by The Saint Paul Foundation. Administered by Public Art Saint Paul.

Entry Courtyard, Beaverton City Hall, Beaverton, OR, 1992. Commissioned by Beaverton Arts Commission.

Kellogg Mall Park, St. Paul, MN, 1990. Commissioned by The City of Saint Paul in cooperation with Public Art Saint Paul.



CIVIC ART PLANNING

A Plan for Public Art Practice in the Central Corridor, A Living Plan (Green Line, Light Rail). The Central Corridor Public Art Plan, Saint Paul, MN, ongoing. Lead Artist, commissioned by Public Art Saint Paul.

Public Art Master Plan for Landscape Sculpture at Moffett Towers Office Park, Landscape Design, Earthworks, Granite and Bronze Fountains, Sunnyvale, CA, 2009. Commissioned by the City of Sunnyvale and the Jay Paul Company.

A Public Art Plan for the Expressive Potential of Utility Infrastructure, City of Calgary, Utilities and Environmental Protection Department, with Via Partnership, Calgary, Alberta, Canada, 2007. Commissioned by the Public Art Program, City of Calgary.

AWARDS, FELLOWSHIPS AND GRANTS

- 2013

Focus on Excellence - Annual Best of NAOIP (Commercial Real Estate Development Association) Northern Virginia Award for *Receptor*, Springfield, VA
- 2012

American Institute of Architects, Fort Worth, TX, Quality in Construction/Artisan Award for *Avenue of Light*
- 2010

Americans for the Arts, Public Art "Year in Review" Award for *Sentient Beings*, North Hollywood, CA
- American Society of Landscape Architects, Northern California Chapter, Merit Award for the Moffett Towers Corporate Campus
- 2008

Americans for the Arts. Public Art "Year in Review" for an Exemplary Innovative Public Artwork Created in 2008, *Sammamish Meander*, York Bridge, Redmond WA
- Award of Excellence, Community Outreach and In-House Initiative Award from the Consulting Engineers of Alberta, Via Partnership, Cliff Garten Studio, CH2M Hill Canada
- 2007

Valley Forward. Art in Public Places: Award for Environmental Excellence, Sonoran Suite, Scottsdale, AZ

Mid-City Exposition Boulevard Light Rail Art Program, Los Angeles, CA, 2006. Lead Artist with Zimmer Gunsul Frasca Architects. Commissioned by Los Angeles Metropolitan Transit Authority (MTA), Public Art.

Art Master Plan for the Light Rail Cross County Extension, St. Louis, MO, 2003. Commissioned by the Bi State Development Agency, Illinois, MI.

Civic Art Master Plan for Scottsdale's Sonoran Core and Airport Park Character Areas, City of Scottsdale, AZ, 2000. Commissioned by the Scottsdale Cultural Council and the City of Scottsdale, Arizona.

- 2007

American Council of Engineering Companies Silver Award for Structural Systems, York Bridge Replacement Project, Redmond, WA
- 2006

Environmental Excellence Award, Public Art for CAP Basin Sports Complex, Valley Forward Association, Phoenix, AZ
- 2006

Professional Design Award for CAP Basin Sports Complex, American Society of Landscape Architects, Phoenix, AZ
- 1995-97

Archibald Bush Foundation Artist Fellowship
- 1994

Archibald Bush Foundation Leadership Fellows Program
- 1993

Leadership in the Neighborhoods Fellowship, The St. Paul Companies
- 1989

Visual Arts Travel and Study Grant, Italian Gardens, The Jerome Foundation
- 1985

Arts-Midwest/National Endowment for the Arts Regional Fellowship
- 1980

Minnesota State Arts Board Grant for Visual Artist

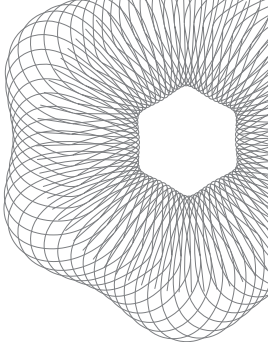
EDUCATION

Master of Fine Arts, Sculpture, Rhode Island School of Design, Providence, RI
Master of Landscape Architecture with Distinction, Graduate School of Design, Harvard University, Cambridge, MA
Bachelor of Fine Arts, New York State College of Ceramics, Alfred, NY

SELECTED PRESS

- Arch Daily - Selected Works*, December 18, 2013 "Ribbons/Cliff Garten Studio"
- Contemporist*, December 18, 2013 "Ribbons by Cliff Garten Studio"
- Curbed Los Angeles*, November 24, 2013 "LA Artists Making the World Better"
- KCET*, November 22, 2013 "Tapping the Third Realm: Artists Exploring Spiritual Dimensions" by Tyler Stallings
- SF Examiner*, November 7, 2013 "Renovation Complete at 50 United Nations Plaza" by Jessica Kwong
- Westside People*, Nov-Dec, 2013 "Cliff Garten: Recreating Public Space"
- Government Engineering*, September-October, 2013 "A Bridge as Sculpture"
- Sculpture*, May Vol. 32 No.4, 2013 "Public Sculpture in an age of diminishing resources. A Conversation with Cliff Garten"
- California Home + Design*, Spring 2013 "In the Spotlight featuring Cliff Garten,"by Sarah White
- Westword*, November 6, 2012 "The Denver Police Crime Labratory offers engaging new art"
- Sculpture*, April Vol. 31 No.3, 2012 "Recent Submissions"
- Wall Street Journal*, February 10, 2012 "Where Art and Architecture Collide", by Nancy Kates

- Public Art Review*, Issue 45 Fall/Winter 2011 "Old and New: In Rhode Island, tradition and innovation merge to benefit the community"
- California Home + Design*, October 6, 2011 "South LA Gets New Public Art By Cliff Garten,"by Marissa Gluck.
- Urban Land Magazine*, July 29, 2011 "Designers vs. Engineers: Pushing for Infrastructure on a Human Scale" ," by Jack Skelly
- FORM Magazine*, May/June 2011 "50 United Nations Plaza"
- Design Bureau Magazine*, March/April 2011 "Luminescent Design", by Christopher Moraff
- Contract Magazine*, October 2010 "The Art of Healthcare Design: Laguna Honda Hospital moves into its next century of service with a design by Stantec/ Anshen+Allen"
- Public Art Review*, 20th Anniversary issue 40 Spring/Summer, 2009 "A Watershed moment, for Public Art in Calgary," by Cliff Garten
- Public Art Review*, 20th Anniversary issue 39 Winter 2008 "Reflections on Public Art on the New American Frontier," by Todd Bressi and Meridith McKinley
- Washington Business Journal*, December 1, 2008 "Avenue of Light by Cliff Garten Studio"
- Wall Street Journal*, September 1, 2007 "It's Yahoo's Lawn, But This Artist Says Keep Off the Grass", by Kelly Crow.
- The New York Times*, August 22, 1999 "For Hospital Services, Pleasant Settings"











City of Sunnyvale

Agenda Item

14-0434

Agenda Date: 4/16/2014

Hands on the Arts, May 17, 2014