



City of Sunnyvale

Notice and Agenda

Arts Commission

Wednesday, March 18, 2015

7:00 PM

Neighborhood Room - Recreation
Building, Sunnyvale Community Center,
550 E. Remington Drive, Sunnyvale, CA
94087

CALL TO ORDER

SALUTE TO THE FLAG

ROLL CALL

PUBLIC ANNOUNCEMENTS

Speakers are limited to 3 minutes for announcements of related board/commission events, programs, resignations, recognitions, acknowledgments.

CONSENT CALENDAR

- 1.A [15-0314](#) Draft Minutes of the December 17, 2014 Arts Commission Meeting

PUBLIC COMMENTS

This category is limited to 15 minutes, with a maximum of three minutes per speaker. If you wish to address the commission, please complete a speaker card and give it to the Recording Secretary or you may orally make a request to speak. If your subject is not on the agenda, you will be recognized at this time; but the Brown Act (Open Meeting Law) does not allow action by commission members. If you wish to speak to a subject listed on the agenda, you will be recognized at the time the item is being considered by the commission.

PUBLIC HEARINGS/GENERAL BUSINESS

- 2 [15-0039](#) Review and Selection of the Murphy Park Public Art Project

Recommendation: No recommendation.

- 3 [15-0315](#) Review and Approval of Draft 2015 Work Plan

4 [15-0333](#) Election of Vice Chair**NON-AGENDA ITEMS & COMMENTS**

-Commissioner Comments

-Staff Comments

ADJOURNMENT

Notice to the Public:

Any agenda related writings or documents distributed to members of this meeting body regarding any item on this agenda will be made available for public inspection in the originating department or can be accessed through the Office of the City Clerk located at 603 All America Way, Sunnyvale, CA. during normal business hours and at the meeting location on the evening of the commission meeting, pursuant to Government Code §54957.5.

Agenda information is available by contacting Anna Lewis at alewis@sunnyvale.ca.gov or (408) 730-7336. Agendas and associated reports are also available on the City's web site at <http://sunnyvale.ca.gov> or at the Sunnyvale Public Library, 665 W. Olive Ave., Sunnyvale, 72 hours before the meeting.

Pursuant to the Americans with Disabilities Act, if you need special assistance in this meeting, please contact Anna Lewis at (408) 730-7336. Notification of 48 hours prior to the meeting will enable the City to make reasonable arrangements to ensure accessibility to this meeting. (29 CFR 35.106 ADA Title II)



City of Sunnyvale

Agenda Item

15-0314

Agenda Date: 3/18/2015

Draft Minutes of the December 17, 2014 Arts Commission Meeting



City of Sunnyvale

Meeting Minutes - Draft Arts Commission

Wednesday, December 17, 2014

7:00 PM

Neighborhood Room - Recreation
Building, Sunnyvale Community Center,
550 E. Remington Drive, Sunnyvale, CA
94087

CALL TO ORDER

Chair Park called the meeting to order at 7 p.m. in the Neighborhood Room.

SALUTE TO THE FLAG

Chair Park led the salute to the flag.

ROLL CALL

Present: 5 - Chair Misuk Park
Vice Chair Shawnte Santos
Commissioner Roberta Kiphuth
Commissioner Robert Lawson
Commissioner Suzanne Moshier

Council Liaison Mayor Griffith (present)

PUBLIC ANNOUNCEMENTS

None

CONSENT CALENDAR

1A [14-0858](#) Draft Minutes of the Arts Commission Meeting of November 19, 2014

Vice Chair Santos moved and Commissioner Moshier seconded the motion to approve the minutes as presented. The motion carried by the following vote:

Yes: 5 - Chair Park
Vice Chair Santos
Commissioner Kiphuth
Commissioner Lawson
Commissioner Moshier

No: 0

PUBLIC COMMENTS

None

PUBLIC HEARINGS/GENERAL BUSINESS

- 2 [14-1128](#) Art in Private Development /479 N. Pastoria Avenue
(Peery-Arrillaga)

Community Services Manager Tegan McLane provided the guidelines for reviewing Art in Private Development (AIPD) projects and introduced Artist Dan Winterich and his proposed piece "Standpoint." Mr. Winterich discussed his background, artwork and inspirations for previous pieces. He provided images and descriptions of his inspiration for "Standpoint," including machinery from Hendy Iron Works and the work of artists James Turrell, Bob Irwin and Donald Judd. He answered commissioner questions regarding safety concerns related to reflections from the glass and about the structural engineering and installation of the artwork. He provided a sample of dichroic glass, answered questions about it and the night time lighting plan. He displayed a model of "Standpoint" and discussed the proposed location, the size of the piece and the ability for the public to interact with the artwork as pedestrians.

Chair Park opened public comments. Seeing none, she closed public comments.

Vice Chair Santos moved and Commissioner Moshier seconded Alternative 1: Approve the artwork as it is proposed. Commissioners provided rationale for their vote. Commissioner Kiphuth stated she loves the placement because it can also be seen from inside the building and it will catch the sunlight. She said it is a great piece. Commissioner Moshier stated she loves the location and said it is beautiful and eye-catching. Vice Chair Santos attended James Turrell's Respective and stated she is excited to see the artwork in full scale and to see how Mr. Winterich worked through the lighting issues. Chair Park stated she likes the thought that went into this artwork. She said she likes that the artwork takes the sacred sentiment of stained glass and moves it into the public sphere, away from sacred art to public art. She also said the shape is friendly, with a gentle curve and despite being an odd shape, it is balanced. The light in the center of the piece creates a relationship with the stainless steel. She stated the idea, memory and inherent quality of stained glass has a spiritual effect. It is a beautiful piece of artwork that draws in and attracts attention while also making the viewer think inward. The motion was approved by the following vote:

Yes: 5 - Chair Park
Vice Chair Santos
Commissioner Kiphuth
Commissioner Lawson
Commissioner Moshier

No: 0

3 [14-0892](#) Annual Review of Code of Ethics and Conduct for Elected and Appointed Officials

Staff provided the Commission with the 2014 Code of Ethics and Conduct for Elected and Appointed Officials for their review and comment.

Chair Park opened public comments. Seeing none, she closed public comments.

Commissioner Lawson moved and Vice Chair Santos seconded the motion to approve the annual review of the Code of Ethics and Code of Conduct for Elected and Appointed Officials. The motion carried by the following vote:

Yes: 5 - Chair Park
Vice Chair Santos
Commissioner Kiphuth
Commissioner Lawson
Commissioner Moshier

No: 0

4 [14-1093](#) Review Draft of 2015 Annual Work Plan

Ms. McLane reviewed the draft of the 2015 Work Plan and asked Commissioners to add items related to their goals or planning for participation in events during the next year. Ms. McLane requested to add the item Murphy Park Art in Public Places (AIPP) in March, and to add "Review of AIPD items as needed" into the section "Additional Items to be Scheduled." Chair Park inquired if staff plans to display pictures of Sunnyvale's Public Art at the Hands on the Arts (HOTS) event. Ms. McLane explained that since staff is not planning to do so, the Commission could pursue hosting a booth. Commissioner Moshier inquired if local schools take tours of Sunnyvale Public Art near their schools, Ms. McLane replied that she is not aware if schools take tours, however; she has observed teachers informing their class about the public art at the Community Center complex.

NON-AGENDA ITEMS & COMMENTS

-Commissioner Comments

None

-Staff Comments

Ms. McLane announced the Red Hot Chachkas will perform on Saturday Dec. 20, Last month's show by County Line Trio was a sold-out event, and the recent pottery sale had a strong turn out. Currently staff is accepting applications from Artists who wish to participate in the HOTS event, and staff is pursuing business sponsorships. The event draws approximately 3000 participants, with 1,300 ages 3-12. Ms. McLane also announced that the jury for the Murphy Park AIPP requested formal proposals from four artists.

INFORMATION ONLY REPORTS/ITEMS

None

ADJOURNMENT

Chair Park adjourned the meeting at 8:01 p.m.



City of Sunnyvale

Agenda Item

15-0039

Agenda Date: 3/18/2015

REPORT TO ARTS COMMISSION

SUBJECT

Review and Selection of the Murphy Park Public Art Project

BACKGROUND

In 2013-14, the Murphy Park building was renovated, including improvements to the restrooms, flooring, rooftop HVAC units, kitchen facilities, window coverings, storage spaces and the addition of a preschool space. The \$1.3 million project was subject to the Art in Public Places (AIPP) requirement, and \$13,000 was allocated in the project budget for a public art component.

A Project Review Committee was established to coordinate the public art component and identify possible types of art and locations for the art. The seven-member Project Review Committee consisted of representatives from the Department of Library and Community Services, the Department of Public Works and a representative from one of the park's user groups, the Sunnyvale Lawn Bowls Club.

Based on the available art budget, current park uses and public visibility of the possible locations, the committee determined that the artwork would be a 2- or 3-dimensional wall piece, such as a mural or wall sculpture, located on one or all of the large walls facing Sunnyvale Avenue, on the western side of the park building (Attachment 1 - Site Plan with Art Locations).

After identifying the best location for the artwork, artistic qualifications were solicited from Northern California artists through a Request for Qualifications (RFQ) process. Eighteen artists applied for the commission and the Project Review Committee reviewed the artistic style, originality and professional experience for each of the eighteen artists. The committee selected a short-list of four artists and invited them to develop a design proposal specific to the park and its "Early California" theme.

This report contains the details for three of the four final design proposals. The fourth proposal was disqualified from the competition after it was discovered that the artist did not meet the eligibility requirement of residing in Northern California. Each of the three remaining artists will present their design at the March 18, 2015, Arts Commission meeting. The Arts Commission is being asked to review and rank the design proposals in order of preference. The commission's ranking will be forwarded to the City Council for action on April 28, 2015. The City Council will make the final selection.

EXISTING POLICY

General Plan, Community Character - Design

Policy CC-1.8 Provide and encourage the incorporation of art - both functional and decorative - in public and private development.

Policy CC-1.4 Support measures which enhance the identity of special districts and residential

neighborhoods to create more variety in the physical environment.

Council Policy 6.4.1, Arts - Goals and Policies, Goal E: Create an aesthetically pleasing environment for Sunnyvale through use of functional and decorative art.

Council Policy 6.4.4, Art in Public Places, requires certain above ground municipal renovation projects to integrate public art equal in value to one percent of the project valuation.

ENVIRONMENTAL REVIEW

The selection of the Murphy Avenue Public Art Project does not require environmental review because it can be seen with certainty that it does not have a potential to cause a significant impact on the environment. (CEQA Guideline 15061(b)(3).)

DISCUSSION

Proposal #1 was submitted by Fairfield artist Pamela Anderson (Attachment 2 - Anderson Resume and Design Proposal). Ms. Anderson has developed a four-panel mural, titled "From There to Here". Ms. Anderson intends to paint the four panels in her studio on plywood panels using acrylic paint and bolt the panels to the building's exterior. She will also paint directly onto the building.

Proposal #2 was submitted by Peter Hazel of Kings Beach (Attachment 3 - Hazel Resume and Design Proposal). Mr. Hazel is proposing two large ceramic murals, each made up of a combination of handmade bas-relief tiles and smaller mosaic tiles. The ceramic pieces will be bonded to a backing and grouted with waterproof and stain-resistant epoxy grout. The edges of the murals will be bordered with a polished aluminum frame.

Proposal #3 was submitted by Emeryville sculptor, Vickie Jo Sowell (Attachment 4 - Sowell Resume and Design Proposal). Ms. Sowell is proposing two large, metal sculpture murals with paint. Each mural will consist of the metal cutouts bolted to the wall of the building. The negative spaces of the cutouts will be filled in with colored paint.

FISCAL IMPACT

A total of \$13,000 has been set aside in the Murphy Park Renovation Project (#818550) budget for the acquisition of public art. These funds are part of the City's adopted Resource Allocation Plan for FY 2014/2015. Of that amount, \$12,000 has been allocated for the acquisition and installation of the artwork and \$1,000 has been expended on design fee stipends. This amount is sufficient to acquire and install the art as proposed in this RTC. On-going maintenance for this project will require an estimated \$50-\$100 per year, which can be covered by the Permanent Art Collection Maintenance account (#626230).

PUBLIC CONTACT

Public contact was made through posting of the Art Commission agenda on the City's official-notice bulletin board, on the City's website, and the availability of the agenda and report in the Office of the City Clerk.

ALTERNATIVES

Recommend that Council:

1. Select Proposal #1 by Pamela Anderson
2. Select Proposal #2 by Peter Hazel and select between Scene #2 and Scene #3

3. Select proposal #3 by Vickie Jo Sowell

RECOMMENDATION

No recommendation.

Staff is not making a recommendation for this project, as each of the proposals include colorful, engaging and appropriate imagery. All of the proposals will be durable, treated with a graffiti-resistant clear coat or sealant and will require a minimal amount of maintenance each year. Each of the artists is an established, professional artist with previous public art experience.

Prepared by: Kristin Dance, Visual Arts Coordinator

Reviewed by: Tegan McLane, Arts and Marketing Manager

Reviewed by: Dan Wax, Superintendent of Community Services

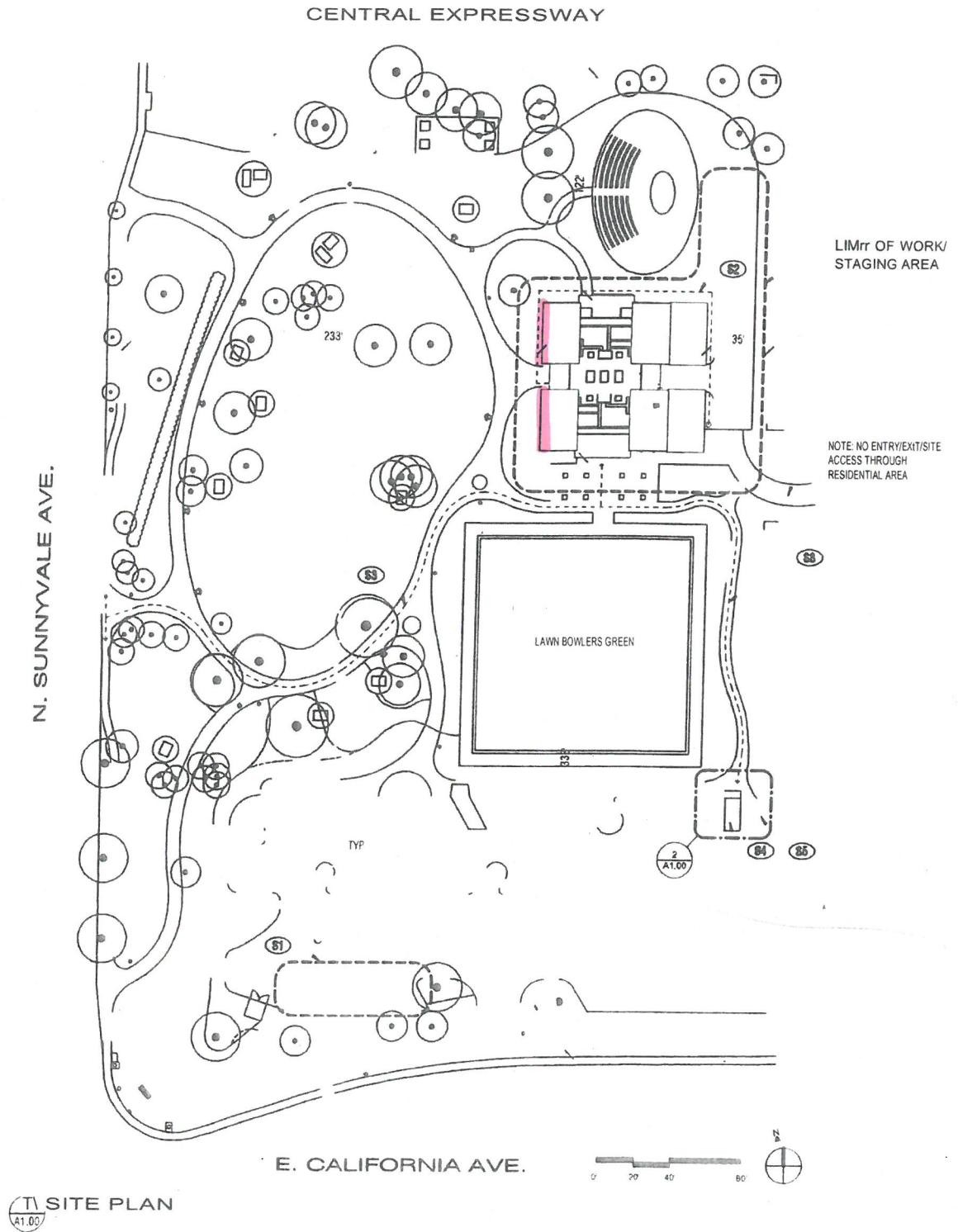
Reviewed by: Lisa G. Rosenblum, Director, Library and Community Services

Reviewed by: Robert A. Walker, Assistant City Manager

Approved by: Deanna J. Santana, City Manager

ATTACHMENTS

1. Site Plan with Art Locations
2. Anderson Resume and Design Proposal
3. Hazel Resume and Design Proposal
4. Sowell Resume and Design Proposal



Artwork Locations

460 Union Avenue Suite A
Fairfield, CA.94533
O: (707) 422-0818
C: (707) 480-4728
F: (707) 422-0417
Email – artbail@aol.com

Pamela J. Anderson

Education

University of California, Davis, BFA
University of California, Davis, Secondary Teaching Credential
University of California, Santa Barbara, Montessori Teaching Certificate

Exhibitions and Awards

1973 One-Woman Show- California State University, San Diego
1974 One-Woman Show- Ticor Title Company
1975 One-Woman Show- University of California- Freedom Hall Gallery
1976 Two-Woman Show- Solano College- Herger Gallery
1978 Fairfield Regional Juried Art Show- First Prize
1978 Nevada County Art Exhibition, Professional Division, First Place
1980 City of Fairfield- Grand Sweepstakes Art Competition- Cash Award
1982 One-Woman Show- Red Carpet Realtors Inc.
1985 Solano County Fair- Professional Division- First Place
1986 Fairfield Regional Juried Art Show- Honorable Mention
1988 Century Communications Featured Artist- Televised Interview
1988 Nut Tree Annual Harvest Exhibit- Honorable Mention
1992 Fairfield Cultural Arts Purchase Award
1998 North Bay Hospital Jubilee Art Competition- First Place
1998 Fairfield Juried Art Show- City of Fairfield Honored Artist
1998 Solano County Arts Alliance- Solano Mall Featured Artist
2001 One-Woman Show- Fast Frame Galleries
2001 One-Woman Show- Solano Bank
2001-2005 Punahoe Schools Art Competition, Honolulu, HI- Featured Artist
2001-2008- Art on the Vine- FVAA Participant
2005 Auction Napa Valley- Selected Artist
2007 One-Woman Show- LedgeWood Creek Winery
2008 Glashoff Gallery- Featured Artist
2009 Beringer Wine Competition, St. Helena- Selected Artist
2009-2011 Child Haven Benefit, LedgeWood Creek Winery- Featured Artist
2010 One-Woman Show- LedgeWood Creek Winery
2011 Kohala Coast Fine Art Gallery- Selected Artist of the Month
2011 Fairfield Juried Art Show- First Place, Second Place
2012 Solano County Public Art Award William J Carrol Govn. Center
2013 City of Sunnyvale, Finalist for sculpture park award

**Collectors &
Commissions**

Opus One Winery- Robert Mondavi, Napa Valley, CA
Girard Winery- Leslie Rudd, Rutherford, CA
PDF Designs – Paul Friend, Suisun Valley, CA
Fessenden Orthodontics- St. Helena, CA
Serta Mattress- Vacaville, CA
St. John's Lutheran School Mural- Napa Valley, CA
Stag's Leap Winery- St. Helena, CA
Ledgewood Creek Winery- Suisun Valley, CA
St. Helena Hospital- Angwin, CA
Vintage Bank- Napa, CA
St. Helena Wine Merchants- St. Helena, CA
Volkhardt Winery- Green Valley, CA
Green Valley Country Club- Green Valley, CA
Solano Bank- Fairfield, CA
Sunset Vineyards- Lodi, CA
Vernasca Vineyards- Suisun Valley, CA
Larry's Produce- Suisun Valley, CA
Solano County Counsel Office- Solano County, CA
Dr. & Mrs. Edward Hughes
Dr. & Mrs. James Gemmer
Mr. & Mrs. William Boyd
Mr. & Mrs. David Paulson
Dr. & Mrs. Edward Levin
Joe Merdacha
Mr. & Mrs. David Layton
Dr. & Mrs. Robert Varady
Kevin O'Rourke
Annie Vogelpool
Barbara Comfort
Solano County District Attorney's Office
William J. Carroll Government Center, Vacaville, CA
2012 Public Art Award
Silverado Resorts

**Gallery Representation
& Professional
Affiliations**

Art on Main- St. Helena, CA 1998-2011
Kohala Coast Fine Art- Waikoloa, HI
Silverado Resorts
Fairfield Visual Arts Association, Past President
Advocates for the Arts
University of California Alumni Association

**Business
Owner/Operator**

1980-Present- Anderson Design Group- Fairfield, CA
1980-Present- Novelli Bail Bonds- Napa, CA.



Elevation rendering of Anderson's design proposal. Each of the four panels will incorporate an arched top and a 'windowsill' of Spanish tiles along the bottom to represent the Mission Revival-style architecture, which was popular during the mid-1800s when the Murphys arrived in Sunnyvale. Each panel will measure approximately 4'w x 4'h and include blue skies, foliage and trees found in the park (pine, eucalyptus, palm, magnolia, cypress).



Panel 1 - Illustrates the historical account of the Murphy family's journey to California in 1884. The family was among the first settlers to cross the Sierra mountain range.



Panel 2 - Illustrates the development of California's vineyards and Sunnyvale's agricultural history.



Panel 3 - Illustrates some of the park's current amenities, including the Hendy Stamp Mill, outdoor amphitheater and table tennis program.



Panel 4 - Illustrates additional park amenities, including picnic facilities, horseshoe pits, park benches, play structure and lawn bowling green.



Example of painted date palm silhouette.
Palm will be approximately 5'w x 9'h and
painted onto exterior of building.



Example of children silhouettes, which will be approximately 5'w x 5'h and painted on the building exterior.

Peter Hazel Artist

peter@peterhazel.com

www.peterhazel.com

P.O. Box 1348

Kings Beach, CA 96143

Peter Hazel

I am a unique mosaic sculpture artist. I create dynamic, large-scale forms and overlay with handcrafted ceramics and glass of intense and brilliant color. My art is a connection to the natural beauty I see around me. All of my pieces are inspired by nature and my sculpture is a reflection of my love and respect for the natural world. As an artist, my intention is to capture a form and express it boldly. Mosaic sculpture gives me the ability to reproduce the vibrant colors and essence of my subjects. I want my audience to see and touch a wave crashing or a fish leaping. I sculpt molds of my subjects from cement and steel, and then create mosaic sculptures by tiling with handcrafted ceramics. Originally from the Bay Area, I have lived in North Lake Tahoe for over Thirty years. I am a Master Craftsman tile setter and granite fabricator with over thirty years experience. I have translated both my knowledge and medium into an inspired art endeavor.

1981-Present Owner and Operator at Hazel Tile and Granite

I have been in the construction business since I was a teenager and am a licensed contractor serving the Lake Tahoe region. I have experience in all aspects of commercial and residential tile and granite. From estimates and budgets, to design and installation, I am one of Lake Tahoe's most trusted names.

2005-Present Professional Artist

I grew up surrounded by art. My father, Richard Hazel, was a successful oil painter and a founder of the Half Moon Bay Pumpkin Festival. My artistic expressions began years ago when I dared to integrate my own ideas and insight into residential work. I began by designing original tile and stone baths, kitchens, and foyers. Since then, I have created hand made ceramic backsplashes, fountains, and sinks. It was during a trip to Barcelona however, that I was introduced to the works of Antoni Gaudi. When I saw his art and mosaics, I became inspired and my art career was born. I taught myself to sculpt in clay and cement. I learned everything I could about glazing and firing ceramics. My work grew in scale and complexity and I am now producing large-scale mosaic sculpture installations.

Ceramics

My hand made tiles are all high-fired and vitrified. This causes the clay to become incredibly hard and impermeable to the elements. Vitrified tiles have the look of glass. In fact, vitrify means to become glass by heat. As an additional advantage, I use epoxy grout. Epoxy grout is made from epoxy resins with a filler powder. This combination makes it extremely durable and waterproof. My installations are made to last in any climate.

Public Art

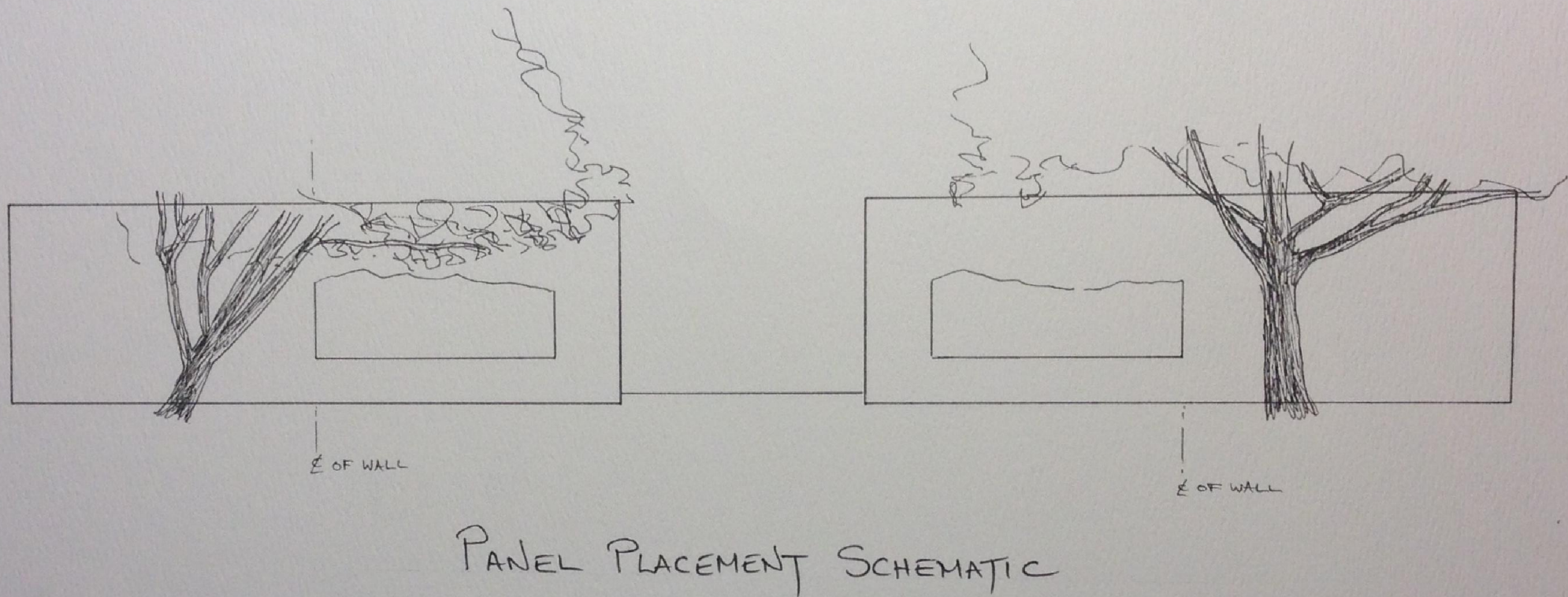
- 2014 *Love Letter To Elaine* A fifteen-foot tall mosaic daffodil featured at Burning Man. Constructed of concrete and rebar and tiled with handmade ceramics, the winding, brilliant green leaf and stem structure supports three vivid yellow flowers. The bright sun reflecting the opulent yellow ceramic blossoms was a visual oasis in the desert. <http://www.peterhazel.com/my-love-letter-to-elaine-dafodil.html>
- 2014 *Four Fishes* A school of four-foot long Rainbow and Lahontan Cutthroat Trout displayed swimming over Lake Tahoe for Detours Art Exhibit at King's Beach, CA. Each trout pattern is uniquely sculpted in bold form and exquisitely tiled expressing the lustrous gleam of the fish. <http://www.peterhazel.com/rainbow-trout---leaping-lisa.html>
- 2014 *Abundance* A harvest of vivid ceramic heirloom tomatoes in a highly detailed sculpted ceramic basket. This basket of bounty is a tribute to my affection for local farmers. Featured at Yountville Art Walk, Yountville, CA <http://www.peterhazel.com/tomato-basket---abundance.html>
- 2014 *Sockeye* Intensely red for spawning, *Sockeye* swims alone at Yountville Art Walk. Inspired by my love of western rivers and the ocean, I wanted to capture the vital radiance of breeding salmon. I sculpted the five-foot long fish and glazed each tile in striking red in order to catch the eye and hold it. *Sockeye* is intended to be evocative of energy, passion, and running water. <http://www.peterhazel.com/sockeye-salmon---freddie.html>
- 2012 *Brook Trout No. 2* Brook Trout leaps above the pond at Promontory Point Park in Greeley, CO. This seven-foot high sculpture is infused with vigor and color and carries the essence and strength of a true western Brook Trout.
- 2010 *The Great Pumpkin* Now a beloved landmark at Cameron's Inn in Half Moon Bay, my twelve-foot pumpkin is a popular attraction during the Half Moon Bay Pumpkin Festival. In bright, rich orange, *The Great Pumpkin* is more than an autumn treat, it is an homage to my hometown. The largest pumpkin art in the world, *The Great Pumpkin* began my foray into giant sculpture. As of September 2014, I have been commissioned to create a giant tomato to be displayed in Woodland, CA. <http://www.peterhazel.com/great-pumpkin.html>
- 2010 *Brook Trout No. 1* This piece marks the beginning of my fish sculptures and is entirely tiled in recycled materials. Prominently displayed in front of Lanza's Restaurant in Kings Beach, this glass and ceramic mosaic is jumping out of the water of Lake Tahoe. The deep red and orange merge within the blue-green body of the leaping trout. Vibrant color punctuates the form with realistic spots, capturing the energy and boldness of trout. <http://www.peterhazel.com/brook-trout-no-1.html>

The Shop

I employ a full time crew of artists, bringing a background of talent in design, ceramics, and construction. Each member of my team is dedicated to art and our mission of sustainability; in fact, two hold Bachelor's degrees in Biology. One member holds a degree in Ceramics and another member in Engineering. This diversity in talent truly creates an atmosphere of inspired ideas and collaboration for the purpose of art.

References

1. Tim Beeman Chairman/CEO Miramar Events Pacifica, CA 650-726-3491
1327 Livingston Avenue Pacifica, CA 94044 tim@miramarevents.com
2. John Corda Owner Jones Corda Construction Tahoe City, CA
530-583-5150 PO Box 7410 Tahoe City, CA 96145
3. Cameron Palmer Owner Cameron's Inn 650-726-5705 1410 Cabrillo Hwy S Half
Moon Bay, CA 94019



Elevation rendering of Hazel's design proposal. Each ceramic mural will be approximately 11'w x 4'h and will include golden hills in the background and California poppies in the foreground. The artist intends to enlist the preschool children and their families to assist in glazing the poppy tiles. Please note that the renderings of Mr. Hazel's imagery were executed in watercolor. The actual colors of the tiles will be more vibrant in color. Samples of the ceramic poppies will be available for the Arts Commission and City Council to view.



PROPOSAL # 1 - MURPHY PARK RENOVATION

Scene #1 - Illustrates the first wagon train carrying the Murphys with huts of the indigenous Ohlone Indians in the distance.



PROPOSAL #2 - MURPHY PARK RENOVATION

Scene #2 - Illustrates a railroad train, which Martin Murphy was instrumental in bringing to the region, with a Sunnyvale fruit orchard. The artist would like to include ceramic ceramic puffs of steam rising above the train and mounted separately on the wall.



PROPOSAL #3 - MURPHY PARK RENOVATION

Scene #3 - Illustrates the eighth California Mission, Mission Santa Clara de Asis, which encompassed the first California institution of higher learning, the College of Santa Clara. Martin Murphy Jr. is credited with helping establish the college. This scene is an alternate scene that can be used in place of the railroad train scene if the City Council prefers.

VICKIE JO SOWELL

3618 Peralta Street, Emeryville, CA 94608 (510) 655-7374
vickiejossowell@hotmail.com www.unrulyimages.com

EDUCATION:

1978-1980 M.F.A. Mills College, Oakland, CA (Sculpture)
1974-1978 B.A., Montana State University, Bozeman, MT (Art)

AWARDS/COMMISSIONS:

2014 **Orange is the Happiest Color**, Escuela Bilingue Internacional,
Emeryville, CA
Powder-baked enamel on steel

Signature sculpture for new bilingual school campus. Extensive interaction with school staff and students to create panel designs that present images and words in three languages

Contract Value: \$27,600
Reference: Margaret Parker Salop Capital Improvement Project Manager
Escuela Bilingüe Internacional
msalop@ebinternacional.org

2011 **Marina Gates**, Marinas Int'l, Emeryville, CA
Powder-baked enamel on steel

Entrance artworks for the Marina and Sportsfishing docks. Reconditioning of existing structure, additional artworks, new panels.

Contract Value: \$21,500
Reference: Don Gussler Harbormaster, Emeryville Marina
dgussler@marinasinternational.com

2011 **The Rippling**, McKinley Arts and Culture Center, Reno NV
Powder-baked enamel on steel

Sign supports for informational signs at Reno's Arts Center that featured local endangered species

Enamel painted steel

Entryways and decorative fencing for Elementary school renovation

Contract Value: \$25,000

2008 **Life is a Ball**, King Park, Brentwood, CA
Welded Bronze

Commission for City of Brentwood, CA's King Park. Figures of five bronze dogs are rendered in the act of leaping for a thrown ball. The standalone figure of "King," Brentwood's first licensed canine, sits nearby.

Contract Value: \$44,000

2008 **Roots of Oakland**, Highland Hospital, Oakland, CA
10 tile mosaic panels with hand-crafted text and floral elements

I was commissioned to provide 10 ceramic tile mosaic panels for the terraced main entryway to Alameda County's Highland Hospital.

Contract Value: \$13,000

2007 **Sprazzo di Sole**, Orinda, CA
Enamel on Steel

Commission installed at Private Residence, Orinda CA.

Contract Value: \$10,000

2007 **Sweidy-Stata Poolhouse**, Atherton, CA
Powder-baked enamel, zinc-dipped steel

Private Commission, Sweidy-Stata Home, Atherton, CA. I was commissioned to provide a full suite of artworks for the poolhouse location, including three gates, two railings, a large window treatment, and over 50 feet of ornamental fence.

Contract Value: \$37,000

2005, 2007 **Richmond Works**, Richmond, CA
166 waterjet cut steel panels, powder-baked color coatings

Public Art Commission for the City of Richmond's Transit Village. The commission consists of approximately 600 feet of fence in three sections along Marina Way, bordering the Transit Village. Panels depict 7 original thematic designs relating to the people and times of Richmond. Follow-on for Traffic Circle barrier, 2007.

Contract Value: \$150,000

2005 **Stockton Heliotrope**, Stockton, CA
Enamel on Steel 50' diam.

Commission installed at Matt Equinoa Park in Stockton, California. Three sculptural sections sits atop a hexagonal shade structure establishing a spiraling floral bouquet that tracks the sun. Floral images are of native flowers that attract beneficial insects.

Contract Value: \$20,000

2004 **Neighborhood Convergence**, Emeryville, CA
11 8' tall Enamel painted steel figures

Public Art commission, Emeryville, CA. The commission consisted of eleven enamel-painted steel figures, each approximately 8' tall, executed in collaboration with Emeryville painter M. Louise Stanley and lighting designer Jeremy Hamm. The figures are installed on both sides of the Powell Street undercrossing of Interstate 80 in Emeryville.

Contract Value: \$125,000

2004 **Fruitvale Revival**, Oakland, CA

Public Art Commission, City of Oakland. The commission was for a central arch that combined architectural icons drawn from the Fruitvale district with organic fruit and branch fabrications that sprang from Fruitvale's orchard heritage. This plaza entryway crowns four columns along the edge of International Boulevard. A follow-on commission put in place a similar single central arch around a hundred yards away.

Fruit glass enamels by Deborah Lozier

Contract Value: \$30,000 + \$12,000 f.o.

2002 **Legends of Milpitas**, Milpitas, CA

Installation for Murphy Park in Milpitas. Four pillars with capitals depicting aspects of local history.

Contract Value: \$15,000

2002 **Ironhorse Trail**, Dublin, CA
Powder-baked enamel on Steel 183" x 103" x 6"

Percent-for-Art fulfillment, IronHorse Trail Housing project in Dublin, California. The commission included this signature marquee at the entrance to the project, and a series of treeguard elements along the streets there.

Contract Value: \$22,000

2001 **Michael's Palette**, Emeryville, CA
Powder-baked enamel on Steel 13' x 10' x 8'

Commercial commission, percent-for-art fulfillment, Michaels Arts Store, Emeryville, CA

Contract Value \$17,000

2001 **Emeryville Firestation #2**
Powder-baked enamel on Steel 20' x 3' x 3" ,15' x 4' x .5"

For the City's first public art project for the Emeryville Firestation #2, I served as both sculptor and designer, serving as a design/color consultant for the entire facility in addition to the metalworks I installed.

Contract Value \$25,000

2000 **PickleWorks** Gates and Signage (Percent for Art fulfillment)

EXHIBITIONS:

2008 "Artscape Orinda," 11 Public Art Sculptors
2004 "Off the Rim" Grounds for Sculpture, Hamilton, NJ
2003 "Big Little" Jewelers and Sculptors in Metal, Oakland, CA
2000 "Introductions" Sculpture Garden, Wildwood Farm, Glenellen, CA
2000 "Interpreting the Figure" Mill Valley Sculpture Garden
1998 1078 Gallery, Chico, CA (2-person show)
1998 "Body and Soul" Matrix Gallery, Sacramento, CA
1998 S.F. Museum of Modern Art, Rental Gallery, San Francisco
1997 "Marked Metal" Richmond Arts Center, Richmond, CA
1997 "Humor, Parody, + Satire", PRSG at SF Design Center
1996 National Women's Caucus for the Arts, Mills College, Oakland, CA
1996 Pacific Rim Sculptors Group at the Mother Lode, Sonora, CA
1995 SF Women Artists Gallery, San Francisco, CA
1995 Andrea Schwarz Gallery, San Francisco, CA
1994 Public Art Sculpture Exhibition, City of Santa Clara, CA
1994 Pacific Rim Sculptors Group, Syntex Gallery, Palo Alto, CA
1994 ISC Exhibition, Contract Design Center, San Francisco



Elevation rendering of Sowell's design proposal. Each mural will measure approximately 24'w x 5'h x 1"d and be constructed of 1/8" metal sheeting. The metal sheeting will be cut so that the negative spaces of the designs are left, creating the "lines" of each scene. The lines will be painted a rust-brown and the bare wall behind the metal frame will be filled in with colored paint, reminiscent of a coloring book.



Imagery depicting the Murphys' wagon train journey to Sunnyvale.



Imagery depicting the Murphys' wagon train journey to Sunnyvale.



City of Sunnyvale

Agenda Item

15-0315

Agenda Date: 3/18/2015

Review and Approval of Draft 2015 Work Plan

DRAFT 2015 Master Work Plan

Arts Commission Annual Calendar

MEETING DATE	AGENDA ITEM/ISSUE
January 21	
February 18	
March 18	<ul style="list-style-type: none"> • Approve Master Work Plan • Review and Selection of the Murphy Park Public Art Project
April 15	<ul style="list-style-type: none"> • Jay Paul Company/Moffett Gateway Public Art Component
May 13 or 20	<ul style="list-style-type: none"> • Update on Utility Box Project • Review Recommended Budget
June 17	
July 15	<ul style="list-style-type: none"> • Update on Arts Master Plan • Election of Officers
August 19	
September 16	<ul style="list-style-type: none"> • Final month to propose Study Issues
October 21	
November 18	<ul style="list-style-type: none"> • Final month to rank Study Issues
December 16	<ul style="list-style-type: none"> • Final month for Annual Review of Code of Ethics and Conduct for Elected and Appointed Officials

Additional items yet to be scheduled:

- Art in Private Development (AIPD) projects that occur throughout the year
- Council Special Order of the Day (SOD) & Proclamation: October is National Arts and Humanities Month
- Christensen & Sons/433 N. Mathilda Public Art Component
- Landbank Investments//280 Santa Ana Court Public Art Component

Events:

- April 25 – Fit and Fun Earth Day Fair
- May 16 – Hands on the Arts
- TBD – State of the City



City of Sunnyvale

Agenda Item

15-0333

Agenda Date: 3/18/2015

Election of Vice Chair