



City of Sunnyvale

Notice and Agenda

Parks and Recreation Commission

Wednesday, April 8, 2015

7:00 PM

Council Chambers, City Hall, 456 W. Olive
Ave., Sunnyvale, CA 94086

CALL TO ORDER

SALUTE TO THE FLAG

ROLL CALL

PRESENTATION

[15-0407](#) American Youth Soccer Organization (AYSO)

[15-0408](#) Serra Little League

PUBLIC ANNOUNCEMENTS

Speakers are limited to 3 minutes for announcements of related board/commission events, programs, resignations, recognitions, acknowledgments.

CONSENT CALENDAR

1 A [15-0358](#) Approval of the Draft Minutes of the Parks and Recreation Commission Meeting of March 11, 2015

Attachments: [Draft Minutes of March 11, 2015](#)

PUBLIC COMMENTS

This category is limited to 15 minutes, with a maximum of three minutes per speaker. If you wish to address the commission, please complete a speaker card and give it to the Recording Secretary or you may orally make a request to speak. If your subject is not on the agenda, you will be recognized at this time; but the Brown Act (Open Meeting Law) does not allow action by commission members. If you wish to speak to a subject listed on the agenda, you will be recognized at the time the item is being considered by the commission.

PUBLIC HEARINGS/GENERAL BUSINESS

- 2 [15-0410](#) Capital Improvements Project Review
- 3 [15-0411](#) Community Engagement

NON-AGENDA ITEMS & COMMENTS

-Commissioner Comments

-Staff Comments

INFORMATION ONLY REPORTS/ITEMS

- [15-0413](#) Report to Arts Commission: Review and Selection of the
Murphy Park Public Art Project

Attachments: [Review and Selection of the Murphy Park Public Art](#)

ADJOURNMENT

Notice to the Public:

Any agenda related writings or documents distributed to members of this meeting body regarding any item on this agenda will be made available for public inspection in the originating department or can be accessed through the Office of the City Clerk located at 603 All America Way, Sunnyvale, CA. during normal business hours and at the meeting location on the evening of the board or commission meeting, pursuant to Government Code §54957.5.

Agenda information is available by contacting Anna Lewis at (408) 730-7336. Agendas and associated reports are also available on the City's web site at <http://sunnyvale.ca.gov> or at the Sunnyvale Public Library, 665 W. Olive Ave., Sunnyvale, 72 hours before the meeting.

Pursuant to the Americans with Disabilities Act, if you need special assistance in this meeting, please contact Anna Lewis at (408) 730-7336. Notification of 48 hours prior to the meeting will enable the City to make reasonable arrangements to ensure accessibility to this meeting. (29 CFR 35.106 ADA Title II)



City of Sunnyvale

Agenda Item

15-0407

Agenda Date: 4/8/2015

American Youth Soccer Organization (AYSO)



City of Sunnyvale

Agenda Item

15-0408

Agenda Date: 4/8/2015

Serra Little League



City of Sunnyvale

Agenda Item

15-0358

Agenda Date: 4/8/2015

Approval of the Draft Minutes of the Parks and Recreation Commission Meeting of March 11, 2015



City of Sunnyvale

Meeting Minutes - Draft Parks and Recreation Commission

Wednesday, March 11, 2015

7:00 PM

Council Chambers, City Hall, 456 W. Olive
Ave., Sunnyvale, CA 94086

CALL TO ORDER

Chair Alexander called the meeting to order at 7:03 p.m. in the Council Chambers.

SALUTE TO THE FLAG

Chair Alexander led the salute to the flag.

ROLL CALL

Present: 5 - Chair Henry Alexander III
Vice Chair Craig Pasqua
Commissioner Ralph Kenton
Commissioner Robert Pochowski
Commissioner Andrea Schneck

Council Liaison Vice Mayor Martin-Milius (present)

PUBLIC ANNOUNCEMENTS

Misuk Park announced an Earth Day event at the Charles Street Community Garden and Full Circle Farm on April 18 and 19, respectively.

CONSENT CALENDAR

1A [15-0284](#) Draft Minutes of February 11, 2015 Parks and Recreation
Commission Meeting

Commissioner Kenton moved and Commissioner Schneck seconded the motion to approve the draft minutes of February 11, 2015. The motion carried by the following vote:

Yes: 4 - Chair Alexander III
Vice Chair Pasqua
Commissioner Kenton
Commissioner Schneck

No: 0

Abstain: 1 - Commissioner Pochowski

PUBLIC COMMENTS

Environmental Advocate Shani Kleinhaus from the Santa Clara Valley Audubon Society spoke about the need to educate people who fly drones and model airplanes at Baylands Park. She indicated the County is considering additional signage to advise landing of motorized planes when hawks are present in order to avoid collisions. She stated that hitting a hawk is a violation of United States Fish and Wildlife regulations.

PUBLIC HEARINGS/GENERAL BUSINESS

2 [15-0300](#) Leaf Blower Study and Findings (Study Issue ESD 14-01)

Program Manager Elaine Marshall of the Environmental Services Department presented the staff report. She answered Commissioner questions regarding the benefits of educating the public versus an option of banning gas leaf blowers; about the research used to calculate particulate matter created by gas leaf blowers; what the impact of a ban on gas leaf blowers would be on the City Parks Division; how the public would be educated about municipal code restrictions and best practices of gas leaf blower use; and what other cities have done to address the use of gas leaf blowers in their communities.

Chair Alexander opened the public hearing at 7:24 p.m.

Sunnyvale resident Steve Pavlina is an owner and operator of commercial residential housing in Sunnyvale. He stated there is no practical alternative to gas leaf blowers to complete landscape work. He stated he could not afford the staffing to keep his properties at the current level of standards, and if leaf blowers were banned it could result in an excess of leaves on the ground creating a slipping hazard.

There were no further Public Comments and Chair Alexander closed the public hearing.

Commissioner Kenton moved and Commissioner Pochowski seconded the motion to approve alternative 3) Direct staff to incorporate public education to Sunnyvale residents and landscape professionals regarding the current Municipal Code restrictions related to leaf blower use and education to leaf blower operators on best practices into the City's environmental education efforts as allowed within existing resources and priorities. The motion carried by the following vote:

Yes: 4 - Chair Alexander III
Vice Chair Pasqua
Commissioner Kenton
Commissioner Pochowski

No: 1 - Commissioner Schneck

Commissioners Kenton, Pochowski, Vice Chair Pasqua and Chair Alexander voted yes. Commissioners agreed a ban on leaf blowers would have severe economic implications. Commissioner Pasqua stated a green gardener certificate would be beneficial for the profession, Commissioner Pochowski stated that better technology could lead to alternatives in the future.

Commissioner Schneck voted no, she stated she believes public education is not enough. She stated the data is clear that there are extreme negative health and environmental implications from gas powered leaf blowers and she would like more active options considered. She stated she was not in favor of a ban, but would like to see incentivizing options and limiting the hours of leaf blower use.

3 [15-0128](#) Biological Constraints and Opportunities Analysis for the Sunnyvale Landfill and Baylands Park and Protecting Burrowing Owl Habitat on City Facilities (Study Issue)

Assistant Director of Public Works Craig Mobeck presented the staff report. He answered Commissioner questions regarding the Baylands agreement with Santa Clara County and the financial impact of locating the Animal Assisted Habitat (AAH) at Baylands Park. He answered questions about burrowing owls and the existing mounds at Baylands, and where the owls are currently nesting. He stated there is no current plan for public education.

Chair Alexander opened the public hearing at 8:09 p.m.

Shani Kleinhaus of the Santa Clara Valley Audubon Society thanked the City for giving consideration to the burrowing owls and suggested if nesting occurs that funding could be available through a Habitat Conservation Plan. She said the area looks relatively nice already and hopes to continue the partnership with the Public Works Department. She also explained that Baylands Park is one of the hot spots to watch birds in the San Francisco Bay Area, especially during the migration season. The test area, which was the suggested location for AAH, is used by people observing birds. She asked the Commission to consider a more appropriate place for AAH instead of locating it at Baylands Park and indicated there is little

space along the bay for migratory birds.

There were no further public comments. Chair Alexander closed the public hearing.

Commissioner Pochowski moved and Commissioner Kenton seconded Alternatives No. 1, 2 and 3, Recommend that Council: 1) Direct staff to work with Animal Assisted Happiness if they choose to provide a proposal for locating their facilities at Baylands and the County is amenable to considering this type of use at the park; 2) Direct staff to submit a proposed project in the Capital Program for constructing low impact park enhancements and planting native perennial in various locations at the Landfill including installing additional artificial burrows at both the Landfill and Baylands preserve and providing other habitat enhancements for owls at the Landfill; and 3) Direct staff to incorporate into the operating budget additional costs, estimated to be \$10,000 for Baylands and \$25,000 for the Landfill, related to enhancement and management of habitat. The motion carried by the following vote:

Yes: 5 - Chair Alexander III
Vice Chair Pasqua
Commissioner Kenton
Commissioner Pochowski
Commissioner Schneck

No: 0

Commissioners explained their rationale. Commissioner Pochowski said he supports alternatives 2 and 3. Commissioner Pochowski expressed concern that he doesn't have enough information about using the land for AAH compared with leaving it undeveloped, or about the impact on migratory birds. He stated he is comfortable recommending staff explore options. All the Commissioners stated they agreed with exploring AAH for further information gathering. Commissioner Pasqua asked if anyone from AAH was present, and noted they were not at the prior meeting to represent their program. Commissioner Kenton also said he would like to see the park enhancements installed, and that he supports alternative 3. Commissioner Schneck agreed with the other commissioners and stated that California is biological diversity hot spot and it is a small cost to make a positive difference. She said she has faith the City will do their best to create proper education and care for burrowing owls. Vice Chair Pasqua also stated he still holds hope that the South Hill will become a dog park.

Superintendent of Parks and Golf Scott Morton presented the Commissioner Training, reviewing how Commissioners can educate themselves on the parks and recreation services in Sunnyvale, the organizations that provide resources to Commissioners, and the policies which are in the Commissioners purview. He provided information about a CPRS meeting for Commissioners on April 18 in Fremont.

Chair Alexander opened the public hearing. There were no public comments and he closed the public hearing.

5 [15-0057](#) Review and Approval of the 2015 Work Plan

Commissioners reviewed the Draft Work Plan. Staff answered questions regarding specific items on the work plan. Chair Alexander inquired about how the Commissioners can appropriately encourage public engagement.

Chair Alexander opened the public hearing. There were no public comments, he closed the public hearing.

Commissioner Pochowski moved and Vice Chair Pasqua seconded to approve the Draft Work Plan with the amendment to add the Golf Course Vendor Agreement in May. The motion carried by the following vote:

Yes: 5 - Chair Alexander III
 Vice Chair Pasqua
 Commissioner Kenton
 Commissioner Pochowski
 Commissioner Schneck

No: 0

Commissioners expressed their rationale for their vote. Commissioner Schneck stated the plan meets the requirements, and includes community engagement. Vice Chair Pasqua stated that it is a manageable plan. Chair Alexander stated it is the most active work plan he has seen in his three years since being on the commission.

NON-AGENDA ITEMS & COMMENTS

-Commissioner Comments

Commissioners discussed having a presentation during the April meeting from a youth sports organization. Staff committed to finding a presenter.

Commissioner Kenton inquired what activities the Teen Advisory Committee (TAC) has been coordinating and how he can assist. Superintendent of Community Services Daniel Wax committed to providing a list of activities.

-Staff Comments

Superintendent Wax announced the special event Fit and Fun Earth Day Fair on April 25 at the Columbia Neighborhood Center from 10 a.m. - 3 p.m. He also provided information about a Commissioner email address which is available to the public: parksandrecreationcommission@sunnyvale.ca.gov. All incoming emails will be forwarded to the Commissioners, and the subject line will indicate if the item is operational or policy related.

Superintendent Morton announced that 50 trees were planted during the Arbor Day celebrations. Pictures are available at <http://www.sunnyvaleurbanforestadvocates.org/>

Commissioners agreed to hold a Special Meeting on April 22 at 7:30 p.m. in the Council Chambers to discuss park dedication standards.

ADJOURNMENT

Chair Alexander adjourned the meeting at 9:22 p.m.



City of Sunnyvale

Agenda Item

15-0410

Agenda Date: 4/8/2015

Capital Improvements Project Review



City of Sunnyvale

Agenda Item

15-0411

Agenda Date: 4/8/2015

Community Engagement



City of Sunnyvale

Agenda Item

15-0413

Agenda Date: 4/8/2015

Report to Arts Commission: Review and Selection of the Murphy Park Public Art Project

This report is provided to the Parks and Recreation Commission for information only.



City of Sunnyvale

Agenda Item

15-0039

Agenda Date: 3/18/2015

REPORT TO ARTS COMMISSION

SUBJECT

Review and Selection of the Murphy Park Public Art Project

BACKGROUND

In 2013-14, the Murphy Park building was renovated, including improvements to the restrooms, flooring, rooftop HVAC units, kitchen facilities, window coverings, storage spaces and the addition of a preschool space. The \$1.3 million project was subject to the Art in Public Places (AIPP) requirement, and \$13,000 was allocated in the project budget for a public art component.

A Project Review Committee was established to coordinate the public art component and identify possible types of art and locations for the art. The seven-member Project Review Committee consisted of representatives from the Department of Library and Community Services, the Department of Public Works and a representative from one of the park's user groups, the Sunnyvale Lawn Bowls Club.

Based on the available art budget, current park uses and public visibility of the possible locations, the committee determined that the artwork would be a 2- or 3-dimensional wall piece, such as a mural or wall sculpture, located on one or all of the large walls facing Sunnyvale Avenue, on the western side of the park building (Attachment 1 - Site Plan with Art Locations).

After identifying the best location for the artwork, artistic qualifications were solicited from Northern California artists through a Request for Qualifications (RFQ) process. Eighteen artists applied for the commission and the Project Review Committee reviewed the artistic style, originality and professional experience for each of the eighteen artists. The committee selected a short-list of four artists and invited them to develop a design proposal specific to the park and its "Early California" theme.

This report contains the details for three of the four final design proposals. The fourth proposal was disqualified from the competition after it was discovered that the artist did not meet the eligibility requirement of residing in Northern California. Each of the three remaining artists will present their design at the March 18, 2015, Arts Commission meeting. The Arts Commission is being asked to review and rank the design proposals in order of preference. The commission's ranking will be forwarded to the City Council for action on April 28, 2015. The City Council will make the final selection.

EXISTING POLICY

General Plan, Community Character - Design

Policy CC-1.8 Provide and encourage the incorporation of art - both functional and decorative - in public and private development.

Policy CC-1.4 Support measures which enhance the identity of special districts and residential

neighborhoods to create more variety in the physical environment.

Council Policy 6.4.1, Arts - Goals and Policies, Goal E: Create an aesthetically pleasing environment for Sunnyvale through use of functional and decorative art.

Council Policy 6.4.4, Art in Public Places, requires certain above ground municipal renovation projects to integrate public art equal in value to one percent of the project valuation.

ENVIRONMENTAL REVIEW

The selection of the Murphy Avenue Public Art Project does not require environmental review because it can be seen with certainty that it does not have a potential to cause a significant impact on the environment. (CEQA Guideline 15061(b)(3).)

DISCUSSION

Proposal #1 was submitted by Fairfield artist Pamela Anderson (Attachment 2 - Anderson Resume and Design Proposal). Ms. Anderson has developed a four-panel mural, titled "From There to Here". Ms. Anderson intends to paint the four panels in her studio on plywood panels using acrylic paint and bolt the panels to the building's exterior. She will also paint directly onto the building.

Proposal #2 was submitted by Peter Hazel of Kings Beach (Attachment 3 - Hazel Resume and Design Proposal). Mr. Hazel is proposing two large ceramic murals, each made up of a combination of handmade bas-relief tiles and smaller mosaic tiles. The ceramic pieces will be bonded to a backing and grouted with waterproof and stain-resistant epoxy grout. The edges of the murals will be bordered with a polished aluminum frame.

Proposal #3 was submitted by Emeryville sculptor, Vickie Jo Sowell (Attachment 4 - Sowell Resume and Design Proposal). Ms. Sowell is proposing two large, metal sculpture murals with paint. Each mural will consist of the metal cutouts bolted to the wall of the building. The negative spaces of the cutouts will be filled in with colored paint.

FISCAL IMPACT

A total of \$13,000 has been set aside in the Murphy Park Renovation Project (#818550) budget for the acquisition of public art. These funds are part of the City's adopted Resource Allocation Plan for FY 2014/2015. Of that amount, \$12,000 has been allocated for the acquisition and installation of the artwork and \$1,000 has been expended on design fee stipends. This amount is sufficient to acquire and install the art as proposed in this RTC. On-going maintenance for this project will require an estimated \$50-\$100 per year, which can be covered by the Permanent Art Collection Maintenance account (#626230).

PUBLIC CONTACT

Public contact was made through posting of the Art Commission agenda on the City's official-notice bulletin board, on the City's website, and the availability of the agenda and report in the Office of the City Clerk.

ALTERNATIVES

Recommend that Council:

1. Select Proposal #1 by Pamela Anderson
2. Select Proposal #2 by Peter Hazel and select between Scene #2 and Scene #3

3. Select proposal #3 by Vickie Jo Sowell

RECOMMENDATION

No recommendation.

Staff is not making a recommendation for this project, as each of the proposals include colorful, engaging and appropriate imagery. All of the proposals will be durable, treated with a graffiti-resistant clear coat or sealant and will require a minimal amount of maintenance each year. Each of the artists is an established, professional artist with previous public art experience.

Prepared by: Kristin Dance, Visual Arts Coordinator

Reviewed by: Tegan McLane, Arts and Marketing Manager

Reviewed by: Dan Wax, Superintendent of Community Services

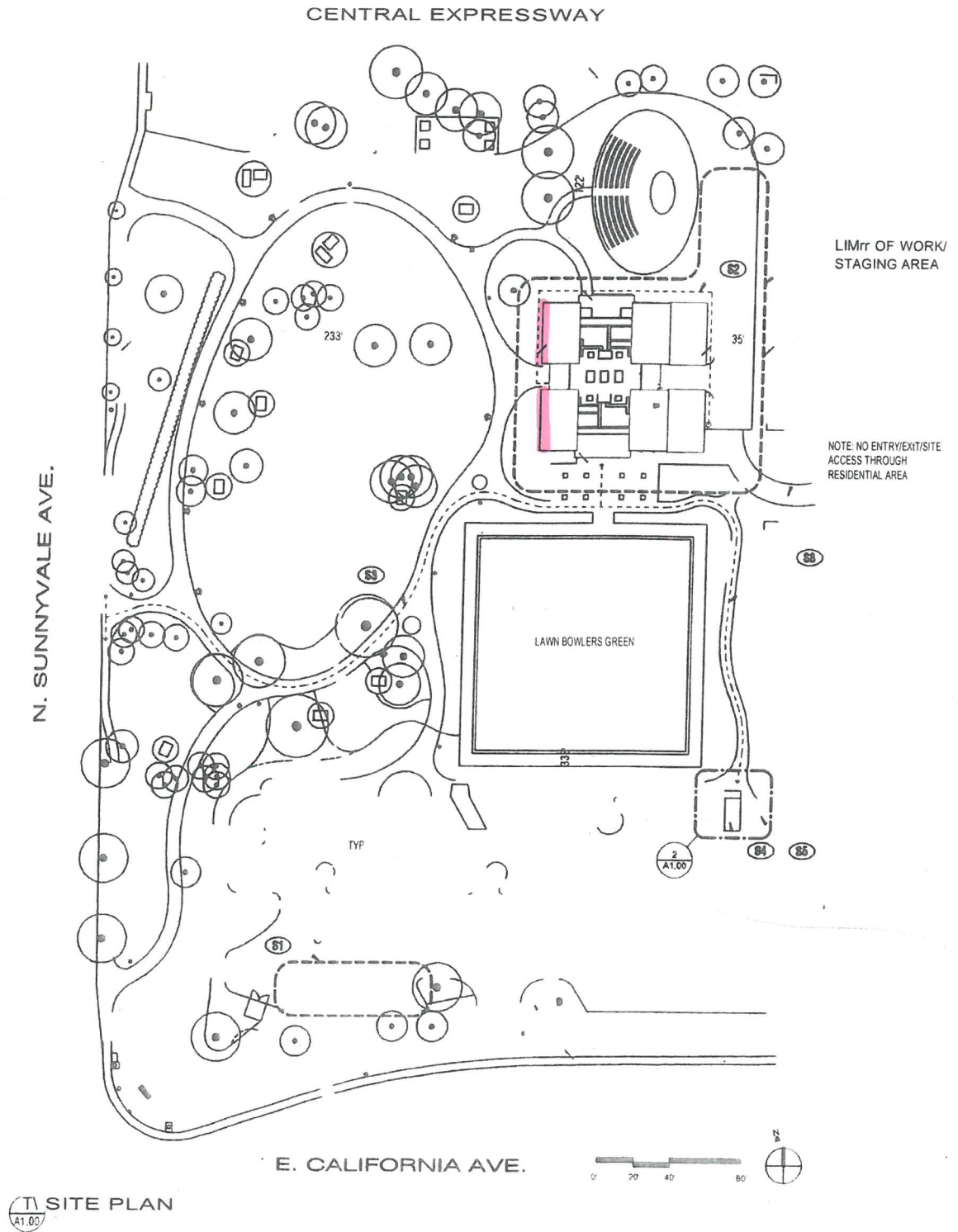
Reviewed by: Lisa G. Rosenblum, Director, Library and Community Services

Reviewed by: Robert A. Walker, Assistant City Manager

Approved by: Deanna J. Santana, City Manager

ATTACHMENTS

1. Site Plan with Art Locations
2. Anderson Resume and Design Proposal
3. Hazel Resume and Design Proposal
4. Sowell Resume and Design Proposal



Artwork Locations

460 Union Avenue Suite A
Fairfield, CA.94533
O: (707) 422-0818
C: (707) 480-4728
F: (707) 422-0417
Email – artbail@aol.com

Pamela J. Anderson

Education

University of California, Davis, BFA
University of California, Davis, Secondary Teaching Credential
University of California, Santa Barbara, Montessori Teaching Certificate

Exhibitions and Awards

1973 One-Woman Show- California State University, San Diego
1974 One-Woman Show- Ticor Title Company
1975 One-Woman Show- University of California- Freedom Hall Gallery
1976 Two-Woman Show- Solano College- Herger Gallery
1978 Fairfield Regional Juried Art Show- First Prize
1978 Nevada County Art Exhibition, Professional Division, First Place
1980 City of Fairfield- Grand Sweepstakes Art Competition- Cash Award
1982 One-Woman Show- Red Carpet Realtors Inc.
1985 Solano County Fair- Professional Division- First Place
1986 Fairfield Regional Juried Art Show- Honorable Mention
1988 Century Communications Featured Artist- Televised Interview
1988 Nut Tree Annual Harvest Exhibit- Honorable Mention
1992 Fairfield Cultural Arts Purchase Award
1998 North Bay Hospital Jubilee Art Competition- First Place
1998 Fairfield Juried Art Show- City of Fairfield Honored Artist
1998 Solano County Arts Alliance- Solano Mall Featured Artist
2001 One-Woman Show- Fast Frame Galleries
2001 One-Woman Show- Solano Bank
2001-2005 Punahoe Schools Art Competition, Honolulu, HI- Featured Artist
2001-2008- Art on the Vine- FVAA Participant
2005 Auction Napa Valley- Selected Artist
2007 One-Woman Show- LedgeWood Creek Winery
2008 Glashoff Gallery- Featured Artist
2009 Beringer Wine Competition, St. Helena- Selected Artist
2009-2011 Child Haven Benefit, LedgeWood Creek Winery- Featured Artist
2010 One-Woman Show- LedgeWood Creek Winery
2011 Kohala Coast Fine Art Gallery- Selected Artist of the Month
2011 Fairfield Juried Art Show- First Place, Second Place
2012 Solano County Public Art Award William J Carrol Govn. Center
2013 City of Sunnyvale, Finalist for sculpture park award

**Collectors &
Commissions**

Opus One Winery- Robert Mondavi, Napa Valley, CA
Girard Winery- Leslie Rudd, Rutherford, CA
PDF Designs – Paul Friend, Suisun Valley, CA
Fessenden Orthodontics- St. Helena, CA
Serta Mattress- Vacaville, CA
St. John's Lutheran School Mural- Napa Valley, CA
Stag's Leap Winery- St. Helena, CA
Ledgewood Creek Winery- Suisun Valley, CA
St. Helena Hospital- Angwin, CA
Vintage Bank- Napa, CA
St. Helena Wine Merchants- St. Helena, CA
Volkhardt Winery- Green Valley, CA
Green Valley Country Club- Green Valley, CA
Solano Bank- Fairfield, CA
Sunset Vineyards- Lodi, CA
Vernasca Vineyards- Suisun Valley, CA
Larry's Produce- Suisun Valley, CA
Solano County Counsel Office- Solano County, CA
Dr. & Mrs. Edward Hughes
Dr. & Mrs. James Gemmer
Mr. & Mrs. William Boyd
Mr. & Mrs. David Paulson
Dr. & Mrs. Edward Levin
Joe Merdacha
Mr. & Mrs. David Layton
Dr. & Mrs. Robert Varady
Kevin O'Rourke
Annie Vogelpool
Barbara Comfort
Solano County District Attorney's Office
William J. Carroll Government Center, Vacaville, CA
2012 Public Art Award
Silverado Resorts

**Gallery Representation
& Professional
Affiliations**

Art on Main- St. Helena, CA 1998-2011
Kohala Coast Fine Art- Waikoloa, HI
Silverado Resorts
Fairfield Visual Arts Association, Past President
Advocates for the Arts
University of California Alumni Association

**Business
Owner/Operator**

1980-Present- Anderson Design Group- Fairfield, CA
1980-Present- Novelli Bail Bonds- Napa, CA.



Elevation rendering of Anderson's design proposal. Each of the four panels will incorporate an arched top and a 'windowsill' of Spanish tiles along the bottom to represent the Mission Revival-style architecture, which was popular during the mid-1800s when the Murphys arrived in Sunnyvale. Each panel will measure approximately 4'w x 4'h and include blue skies, foliage and trees found in the park (pine, eucalyptus, palm, magnolia, cypress).



Panel 1 - Illustrates the historical account of the Murphy family's journey to California in 1884. The family was among the first settlers to cross the Sierra mountain range.



Panel 2 - Illustrates the development of California's vineyards and Sunnyvale's agricultural history.



Panel 3 - Illustrates some of the park's current amenities, including the Hendy Stamp Mill, outdoor amphitheater and table tennis program.



Panel 4 - Illustrates additional park amenities, including picnic facilities, horseshoe pits, park benches, play structure and lawn bowling green.



Example of painted date palm silhouette.
Palm will be approximately 5'w x 9'h and
painted onto exterior of building.



Example of children silhouettes, which will be approximately 5'w x 5'h and painted on the building exterior.

Peter Hazel Artist

peter@peterhazel.com

www.peterhazel.com

P.O. Box 1348

Kings Beach, CA 96143

Peter Hazel

I am a unique mosaic sculpture artist. I create dynamic, large-scale forms and overlay with handcrafted ceramics and glass of intense and brilliant color. My art is a connection to the natural beauty I see around me. All of my pieces are inspired by nature and my sculpture is a reflection of my love and respect for the natural world. As an artist, my intention is to capture a form and express it boldly. Mosaic sculpture gives me the ability to reproduce the vibrant colors and essence of my subjects. I want my audience to see and touch a wave crashing or a fish leaping. I sculpt molds of my subjects from cement and steel, and then create mosaic sculptures by tiling with handcrafted ceramics. Originally from the Bay Area, I have lived in North Lake Tahoe for over Thirty years. I am a Master Craftsman tile setter and granite fabricator with over thirty years experience. I have translated both my knowledge and medium into an inspired art endeavor.

1981-Present Owner and Operator at Hazel Tile and Granite

I have been in the construction business since I was a teenager and am a licensed contractor serving the Lake Tahoe region. I have experience in all aspects of commercial and residential tile and granite. From estimates and budgets, to design and installation, I am one of Lake Tahoe's most trusted names.

2005-Present Professional Artist

I grew up surrounded by art. My father, Richard Hazel, was a successful oil painter and a founder of the Half Moon Bay Pumpkin Festival. My artistic expressions began years ago when I dared to integrate my own ideas and insight into residential work. I began by designing original tile and stone baths, kitchens, and foyers. Since then, I have created hand made ceramic backsplashes, fountains, and sinks. It was during a trip to Barcelona however, that I was introduced to the works of Antoni Gaudi. When I saw his art and mosaics, I became inspired and my art career was born. I taught myself to sculpt in clay and cement. I learned everything I could about glazing and firing ceramics. My work grew in scale and complexity and I am now producing large-scale mosaic sculpture installations.

Ceramics

My hand made tiles are all high-fired and vitrified. This causes the clay to become incredibly hard and impermeable to the elements. Vitrified tiles have the look of glass. In fact, vitrify means to become glass by heat. As an additional advantage, I use epoxy grout. Epoxy grout is made from epoxy resins with a filler powder. This combination makes it extremely durable and waterproof. My installations are made to last in any climate.

Public Art

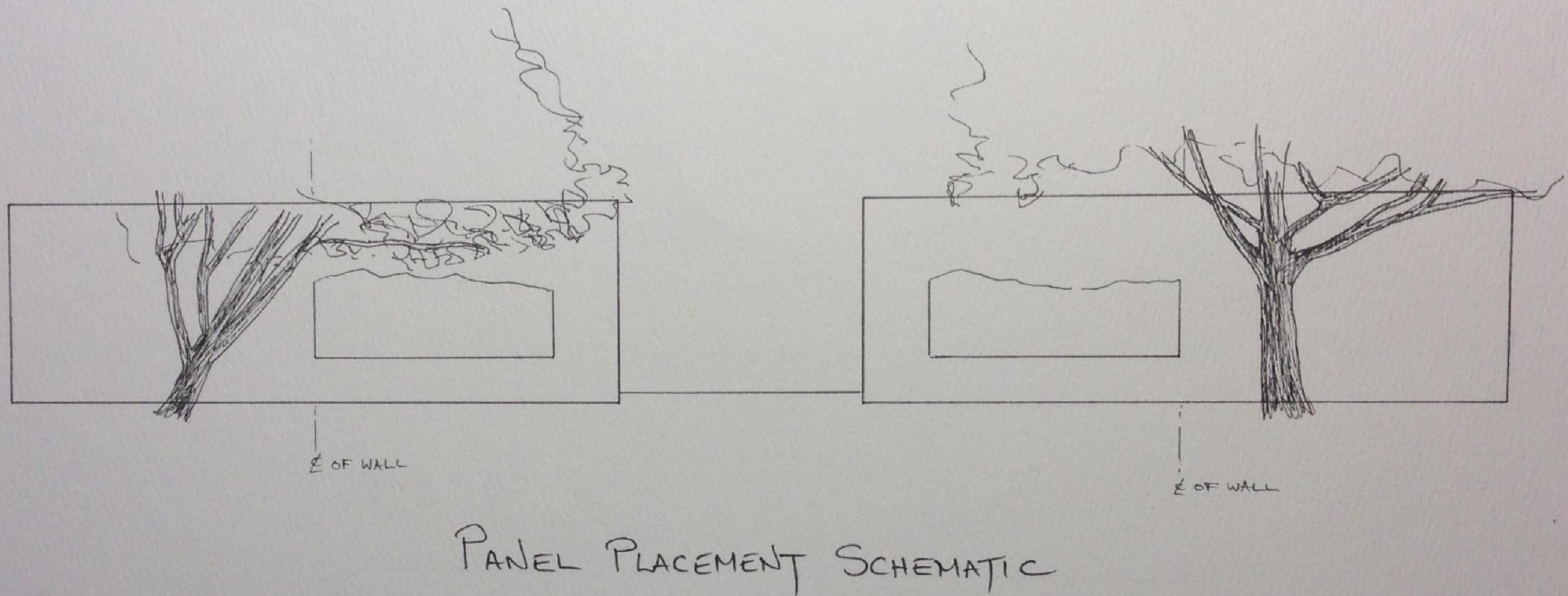
- 2014 *Love Letter To Elaine* A fifteen-foot tall mosaic daffodil featured at Burning Man. Constructed of concrete and rebar and tiled with handmade ceramics, the winding, brilliant green leaf and stem structure supports three vivid yellow flowers. The bright sun reflecting the opulent yellow ceramic blossoms was a visual oasis in the desert. <http://www.peterhazel.com/my-love-letter-to-elaine-dafodil.html>
- 2014 *Four Fishes* A school of four-foot long Rainbow and Lahontan Cutthroat Trout displayed swimming over Lake Tahoe for Detours Art Exhibit at King's Beach, CA. Each trout pattern is uniquely sculpted in bold form and exquisitely tiled expressing the lustrous gleam of the fish. <http://www.peterhazel.com/rainbow-trout---leaping-lisa.html>
- 2014 *Abundance* A harvest of vivid ceramic heirloom tomatoes in a highly detailed sculpted ceramic basket. This basket of bounty is a tribute to my affection for local farmers. Featured at Yountville Art Walk, Yountville, CA <http://www.peterhazel.com/tomato-basket---abundance.html>
- 2014 *Sockeye* Intensely red for spawning, *Sockeye* swims alone at Yountville Art Walk. Inspired by my love of western rivers and the ocean, I wanted to capture the vital radiance of breeding salmon. I sculpted the five-foot long fish and glazed each tile in striking red in order to catch the eye and hold it. *Sockeye* is intended to be evocative of energy, passion, and running water. <http://www.peterhazel.com/sockeye-salmon---freddie.html>
- 2012 *Brook Trout No. 2* Brook Trout leaps above the pond at Promontory Point Park in Greeley, CO. This seven-foot high sculpture is infused with vigor and color and carries the essence and strength of a true western Brook Trout.
- 2010 *The Great Pumpkin* Now a beloved landmark at Cameron's Inn in Half Moon Bay, my twelve-foot pumpkin is a popular attraction during the Half Moon Bay Pumpkin Festival. In bright, rich orange, *The Great Pumpkin* is more than an autumn treat, it is an homage to my hometown. The largest pumpkin art in the world, The Great Pumpkin began my foray into giant sculpture. As of September 2014, I have been commissioned to create a giant tomato to be displayed in Woodland, CA. <http://www.peterhazel.com/great-pumpkin.html>
- 2010 *Brook Trout No. 1* This piece marks the beginning of my fish sculptures and is entirely tiled in recycled materials. Prominently displayed in front of Lanza's Restaurant in Kings Beach, this glass and ceramic mosaic is jumping out of the water of Lake Tahoe. The deep red and orange merge within the blue-green body of the leaping trout. Vibrant color punctuates the form with realistic spots, capturing the energy and boldness of trout. <http://www.peterhazel.com/brook-trout-no-1.html>

The Shop

I employ a full time crew of artists, bringing a background of talent in design, ceramics, and construction. Each member of my team is dedicated to art and our mission of sustainability; in fact, two hold Bachelor's degrees in Biology. One member holds a degree in Ceramics and another member in Engineering. This diversity in talent truly creates an atmosphere of inspired ideas and collaboration for the purpose of art.

References

1. Tim Beeman Chairman/CEO Miramar Events Pacifica, CA 650-726-3491
1327 Livingston Avenue Pacifica, CA 94044 tim@miramarevents.com
2. John Corda Owner Jones Corda Construction Tahoe City, CA
530-583-5150 PO Box 7410 Tahoe City, CA 96145
3. Cameron Palmer Owner Cameron's Inn 650-726-5705 1410 Cabrillo Hwy S Half
Moon Bay, CA 94019



Elevation rendering of Hazel's design proposal. Each ceramic mural will be approximately 11'w x 4'h and will include golden hills in the background and California poppies in the foreground. The artist intends to enlist the preschool children and their families to assist in glazing the poppy tiles. Please note that the renderings of Mr. Hazel's imagery were executed in watercolor. The actual colors of the tiles will be more vibrant in color. Samples of the ceramic poppies will be available for the Arts Commission and City Council to view.



PROPOSAL # 1 - MURPHY PARK RENOVATION

Scene #1 - Illustrates the first wagon train carrying the Murphys with huts of the indigenous Ohlone Indians in the distance.



PROPOSAL #2 - MURPHY PARK RENOVATION

Scene #2 - Illustrates a railroad train, which Martin Murphy was instrumental in bringing to the region, with a Sunnyvale fruit orchard. The artist would like to include ceramic ceramic puffs of steam rising above the train and mounted separately on the wall.



PROPOSAL #3 - MURPHY PARK RENOVATION

Scene #3 - Illustrates the eighth California Mission, Mission Santa Clara de Asis, which encompassed the first California institution of higher learning, the College of Santa Clara. Martin Murphy Jr. is credited with helping establish the college. This scene is an alternate scene that can be used in place of the railroad train scene if the City Council prefers.

VICKIE JO SOWELL

3618 Peralta Street, Emeryville, CA 94608 (510) 655-7374
vickiejosowell@hotmail.com www.unrulyimages.com

EDUCATION:

1978-1980 M.F.A. Mills College, Oakland, CA (Sculpture)
1974-1978 B.A., Montana State University, Bozeman, MT (Art)

AWARDS/COMMISSIONS:

2014 **Orange is the Happiest Color**, Escuela Bilingue Internacional,
Emeryville, CA
Powder-baked enamel on steel

Signature sculpture for new bilingual school campus. Extensive interaction with school staff and students to create panel designs that present images and words in three languages

Contract Value: \$27,600
Reference: Margaret Parker Salop Capital Improvement Project Manager
Escuela Bilingüe Internacional
msalop@ebinternacional.org

2011 **Marina Gates**, Marinas Int'l, Emeryville, CA
Powder-baked enamel on steel

Entrance artworks for the Marina and Sportsfishing docks. Reconditioning of existing structure, additional artworks, new panels.

Contract Value: \$21,500
Reference: Don Gussler Harbormaster, Emeryville Marina
dgussler@marinasinternational.com

2011 **The Rippling**, McKinley Arts and Culture Center, Reno NV
Powder-baked enamel on steel

Sign supports for informational signs at Reno's Arts Center that featured local endangered species

Enamel painted steel

Entryways and decorative fencing for Elementary school renovation

Contract Value: \$25,000

2008 **Life is a Ball**, King Park, Brentwood, CA
Welded Bronze

Commission for City of Brentwood, CA's King Park. Figures of five bronze dogs are rendered in the act of leaping for a thrown ball. The standalone figure of "King," Brentwood's first licensed canine, sits nearby.

Contract Value: \$44,000

2008 **Roots of Oakland**, Highland Hospital, Oakland, CA
10 tile mosaic panels with hand-crafted text and floral elements

I was commissioned to provide 10 ceramic tile mosaic panels for the terraced main entryway to Alameda County's Highland Hospital.

Contract Value: \$13,000

2007 **Sprazzo di Sole**, Orinda, CA
Enamel on Steel

Commission installed at Private Residence, Orinda CA.

Contract Value: \$10,000

2007 **Sweidy-Stata Poolhouse**, Atherton, CA
Powder-baked enamel, zinc-dipped steel

Private Commission, Sweidy-Stata Home, Atherton, CA. I was commissioned to provide a full suite of artworks for the poolhouse location, including three gates, two railings, a large window treatment, and over 50 feet of ornamental fence.

Contract Value: \$37,000

2005, 2007 **Richmond Works**, Richmond, CA
166 waterjet cut steel panels, powder-baked color coatings

Public Art Commission for the City of Richmond's Transit Village. The commission consists of approximately 600 feet of fence in three sections along Marina Way, bordering the Transit Village. Panels depict 7 original thematic designs relating to the people and times of Richmond. Follow-on for Traffic Circle barrier, 2007.

Contract Value: \$150,000

2005 **Stockton Heliotrope**, Stockton, CA
Enamel on Steel 50' diam.

Commission installed at Matt Equinoa Park in Stockton, California. Three sculptural sections sits atop a hexagonal shade structure establishing a spiraling floral bouquet that tracks the sun. Floral images are of native flowers that attract beneficial insects.

Contract Value: \$20,000

2004 **Neighborhood Convergence**, Emeryville, CA
11 8' tall Enamel painted steel figures

Public Art commission, Emeryville, CA. The commission consisted of eleven enamel-painted steel figures, each approximately 8' tall, executed in collaboration with Emeryville painter M. Louise Stanley and lighting designer Jeremy Hamm. The figures are installed on both sides of the Powell Street undercrossing of Interstate 80 in Emeryville.

Contract Value: \$125,000

2004 **Fruitvale Revival**, Oakland, CA

Public Art Commission, City of Oakland. The commission was for a central arch that combined architectural icons drawn from the Fruitvale district with organic fruit and branch fabrications that sprang from Fruitvale's orchard heritage. This plaza entryway crowns four columns along the edge of International Boulevard. A follow-on commission put in place a similar single central arch around a hundred yards away.

Fruit glass enamels by Deborah Lozier

Contract Value: \$30,000 + \$12,000 f.o.

2002 **Legends of Milpitas**, Milpitas, CA

Installation for Murphy Park in Milpitas. Four pillars with capitals depicting aspects of local history.

Contract Value: \$15,000

2002 **Ironhorse Trail**, Dublin, CA
Powder-baked enamel on Steel 183" x 103" x 6"

Percent-for-Art fulfillment, IronHorse Trail Housing project in Dublin, California. The commission included this signature marquee at the entrance to the project, and a series of treeguard elements along the streets there.

Contract Value: \$22,000

2001 **Michael's Palette**, Emeryville, CA
Powder-baked enamel on Steel 13' x 10' x 8'

Commercial commission, percent-for-art fulfillment, Michaels Arts Store, Emeryville, CA

Contract Value \$17,000

2001 **Emeryville Firestation #2**
Powder-baked enamel on Steel 20' x 3' x 3", 15' x 4' x .5"

For the City's first public art project for the Emeryville Firestation #2, I served as both sculptor and designer, serving as a design/color consultant for the entire facility in addition to the metalworks I installed.

Contract Value \$25,000

2000 **PickleWorks** Gates and Signage (Percent for Art fulfillment)

EXHIBITIONS:

2008 "Artscape Orinda," 11 Public Art Sculptors
2004 "Off the Rim" Grounds for Sculpture, Hamilton, NJ
2003 "Big Little" Jewelers and Sculptors in Metal, Oakland, CA
2000 "Introductions" Sculpture Garden, Wildwood Farm, Glenellen, CA
2000 "Interpreting the Figure" Mill Valley Sculpture Garden
1998 1078 Gallery, Chico, CA (2-person show)
1998 "Body and Soul" Matrix Gallery, Sacramento, CA
1998 S.F. Museum of Modern Art, Rental Gallery, San Francisco
1997 "Marked Metal" Richmond Arts Center, Richmond, CA
1997 "Humor, Parody, + Satire", PRSG at SF Design Center
1996 National Women's Caucus for the Arts, Mills College, Oakland, CA
1996 Pacific Rim Sculptors Group at the Mother Lode, Sonora, CA
1995 SF Women Artists Gallery, San Francisco, CA
1995 Andrea Schwarz Gallery, San Francisco, CA
1994 Public Art Sculpture Exhibition, City of Santa Clara, CA
1994 Pacific Rim Sculptors Group, Syntex Gallery, Palo Alto, CA
1994 ISC Exhibition, Contract Design Center, San Francisco



Elevation rendering of Sowell's design proposal. Each mural will measure approximately 24'w x 5'h x 1"d and be constructed of 1/8" metal sheeting. The metal sheeting will be cut so that the negative spaces of the designs are left, creating the "lines" of each scene. The lines will be painted a rust-brown and the bare wall behind the metal frame will be filled in with colored paint, reminiscent of a coloring book.



Imagery depicting the Murphys' wagon train journey to Sunnyvale.



Imagery depicting the Murphys' wagon train journey to Sunnyvale.