

San Carlos Airport

COUNTY OF SAN MATEO



TOWN HALL MEETING

City of Sunnyvale
Sunnyvale Community Center

October 18, 2016



SAN CARLOS AIRPORT

- General Aviation Reliever airport that operates under the guidelines of the Federal Aviation Administration (FAA).
- Reliever Airports reduce general aviation congestion that would otherwise exist at:
 - San Francisco International Airport
 - Norman Y. Mineta San Jose International Airport
 - Oakland International Airport
- Home to approximately 500 aircraft and 25 airport businesses.
- Also provides a variety of emergency services and response functions, including Air-Ambulance, Coast Guard training flights, law enforcement patrols, and staging for significant events.



BAYSIDE VISUAL APPROACH

- Approved on July 5th by the FAA for six-month trial period.
 - Exclusively for Surf Air arrivals in good weather conditions.
 - Flight path is over Moffett Airfield towards the Bay bypassing residential neighborhoods under the existing GPS route.
 - Potential to benefit more than 140,000 residents regionally.
 - New arrival route will end on January 5th.
- Community outreach.
 - Noise complaint hotline & website
 - Town Hall meetings (3) / Working Group
- Statistical tracking.
 - Track complaints and tie to aircraft.
 - Track percentage of Surf Air's Bayside Visual Approach arrivals vs. GPS approach.

COUNTY OF SAN MATEO



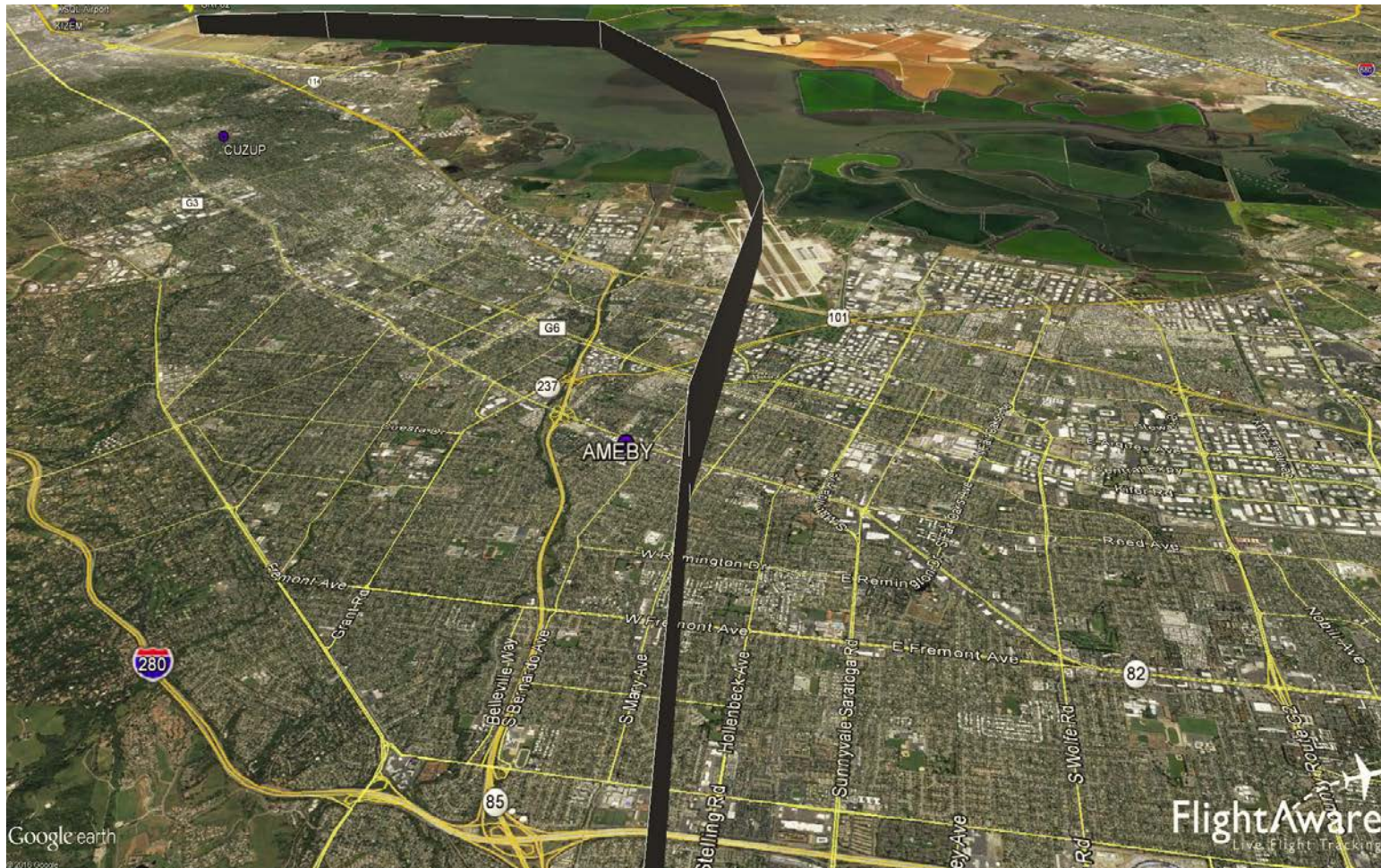
GPS APPROACH USED BY SURF AIR



COUNTY OF SAN MATEO



NEW BAYSIDE VISUAL APPROACH



COUNTY OF SAN MATEO



STATISTICAL TRACKING

DATE RANGE	TOTAL			TOTAL		CITY OF SUNNYVALE	
	ARRIVALS	BVA* APPROACH	% BVA	# of Complaints	# of Households	# of Complaints	# of Households
WEEK 1**	103	53	51%	193	29	5	1
WEEK 2	121	94	78%	136	35	3	2
WEEK 3	122	90	74%	214	40	11	4
WEEK 4	122	78	64%	230	29	9	2
WEEK 5	124	70	56%	257	44	19	3
WEEK 6	123	63	51%	293	54	13	8
WEEK 7	120	58	48%	465	56	45	7
WEEK 8	124	45	36%	389	52	23	3
WEEK 9	113	55	49%	347	39	45	20
WEEK 10	107	56	52%	262	39	49	14
WEEK 11	114	34	30%	349	72	107	36
WEEK 12	101	92	91%	270	46	96	16
WEEK 13	98	72	73%	173	22	59	13
WEEK 14	99	70	71%	175	27	63	14
AV TOTAL:	114	66	59%	268	42	39	10

COUNTY OF SAN MATEO



HOUSEHOLD COMPLAINTS





San Carlos Airport Bayside Visual Approach

Thank You!

Questions?