



City of Sunnyvale

Notice and Agenda

Arts Commission

Wednesday, March 15, 2017

7:00 PM

Board Room - Recreation Center,
Sunnyvale Community Center, 550 E.
Remington Drive, Sunnyvale, CA 94087

CALL TO ORDER

SALUTE TO THE FLAG

ROLL CALL

ORAL COMMUNICATIONS

This category provides an opportunity for members of the public to address the commission on items not listed on the agenda and is limited to 15 minutes (may be extended or continued after the public hearings/general business section of the agenda at the discretion of the Chair) with a maximum of up to three minutes per speaker. Please note the Brown Act (Open Meeting Law) does not allow commissioners to take action on an item not listed on the agenda. If you wish to address the commission, please complete a speaker card and give it to the Recording Secretary. Individuals are limited to one appearance during this section.

1.A CONSENT CALENDAR

[17-0327](#) Approval of the Draft Meeting Minutes of February 15, 2017

PUBLIC HEARINGS/GENERAL BUSINESS

2 [17-0250](#) Approve Art in Private Development Project - Jay Paul Company/Moffett Towers II

Recommendation: Alternative 1: Approve the artwork as it is proposed. Staff concludes that the proposal adequately meets the criteria of the Art in Private Development requirement.

3 [17-0325](#) Approve Master Work Plan

4 [17-0326](#) Hands on the Arts Commission Participation

STANDING ITEM: CONSIDERATION OF POTENTIAL STUDY ISSUES**NON-AGENDA ITEMS & COMMENTS**

-Commissioner Comments

-Staff Comments

ADJOURNMENT

Notice to the Public:

Any agenda related writings or documents distributed to members of this meeting body regarding any item on this agenda will be made available for public inspection in the originating department or can be accessed through the Office of the City Clerk located at 603 All America Way, Sunnyvale, CA. during normal business hours and at the meeting location on the evening of the commission meeting, pursuant to Government Code §54957.5.

Agenda information is available by contacting Kendall Braud at (408) 730-7336. Agendas and associated reports are also available on the City's website at sunnyvale.ca.gov or at the Sunnyvale Public Library, 665 W. Olive Ave., Sunnyvale, 72 hours before the meeting.

Pursuant to the Americans with Disabilities Act, if you need special assistance in this meeting, please contact Sandra Barajas at (408) 730-7382. Notification of 48 hours prior to the meeting will enable the City to make reasonable arrangements to ensure accessibility to this meeting. (28 CFR 35.160 (b) (1))



City of Sunnyvale

Agenda Item

17-0327

Agenda Date: 3/15/2017

Approval of the Draft Meeting Minutes of February 15, 2017



City of Sunnyvale

Meeting Minutes Arts Commission

Wednesday, February 15, 2017

7:00 PM

Neighborhood Room - Recreation Center,
Sunnyvale Community Center, 550 E.
Remington Drive, Sunnyvale, CA 94087

CALL TO ORDER

Chair Koppel called the meeting to order at 7:02 p.m. in the Neighborhood Room.

SALUTE TO THE FLAG

Chair Koppel led the salute to the flag.

ROLL CALL

Present: 5 - Chair David Koppel
Vice Chair Roberta Kiphuth
Commissioner Robert Lawson
Commissioner Dustin Nguyen
Commissioner Susannah Vaughan

Council Liaison Griffith (present)

ORAL COMMUNICATIONS

None.

CONSENT CALENDAR

1.A [17-0124](#) Approval of Draft Minutes of November 16, 2016

Commissioner Lawson moved, and Vice Chair Kiphuth seconded approval of the Consent Calendar as presented. The motion carried by the following vote:

Yes: 5 - Chair Koppel
Vice Chair Kiphuth
Commissioner Lawson
Commissioner Nguyen
Commissioner Vaughan

No: 0

PUBLIC HEARING/GENERAL BUSINESS**2 [17-0125](#) Review 2017 Work Plan Calendar**

Superintendent Wax provided an overview of the draft Master Work Plan including upcoming events and additional items yet to be scheduled.

Superintendent Wax suggested the Arts Commission meeting on May 17 be moved to May 10 for a joint meeting with the Parks and Recreation Commission to review the recommended budget.

Chair Koppel moved to approve a joint meeting on May 10 with the Parks and Recreation Commission and Commissioner Lawson seconded. The motion was carried by the following vote:

Yes: 5 - Chair Koppel
 Vice Chair Kiphuth
 Commissioner Lawson
 Commissioner Nguyen
 Commissioner Vaughan

No: 0

Community Services Manager, Trenton Hill, provided information about the Hand on the Arts Festival on May 20.

Commissioners expressed an interest in participating in the Hands on the Arts Festival, and inquired about strategies to enhance community engagement.

Superintendent Wax indicated Staff will prepare some ideas for Commissioners to participate in the Hand on the Arts Festival, and suggested holding some of the Arts Commissions meetings in local parks.

Commissioners also asked for an update on the Public Arts Master Plan. Superintendent Wax had previously indicated that staff plans to provide an update at the April and August meetings as well as during Staff Comments of the Non-Agenda Items section of tonight's meeting.

Chair Koppel opened for public hearing, and there being no public comments, closed the public hearing.

STANDING ITEM: CONSIDERATION OF POTENTIAL STUDY ISSUES

Chair Koppel inquired about affordable housing for artists as a study issue, and the study issue process.

Superintendent Wax suggested further research and education through the City's Housing Division regarding upcoming affordable housing projects. In addition, he offered to provide an overview of the study issue process at a future meeting.

NON-AGENDA ITEMS & COMMENTS**-Commissioner Comments**

Vice Chair Kiphuth inquired about the City's new website launch date, and whether the website will include an area that focuses on the arts.

Community Services Manager, Trenton Hill, stated the new City website is scheduled to launch at the end of July or early August. Currently, there is not an area on the website dedicated specifically to the arts. However, staff will contact the City's Communications Officer in regards to providing a presentation to the Commission on the new website.

-Staff Comments

Community Services Manager, Trenton Hill, provided an update on the Public Arts Master Plan and indicated the City is in the process of interviewing and reviewing consultant proposals.

ADJOURNMENT

Chair Koppel adjourned the meeting at 8 p.m.



City of Sunnyvale

Agenda Item

17-0250

Agenda Date: 3/15/2017

REPORT TO ARTS COMMISSION

SUBJECT

Approve Art in Private Development Project - Jay Paul Company/Moffett Towers II

BACKGROUND

Under the City's Art in Private Development Ordinance, the development along Discovery Way (between 5th and 11th Avenues) is required to provide public art on site or pay an in-lieu fee. The public art component must be equal in value to 1 percent of the building permit valuation. The procedure established for reviewing the artwork is as follows:

- 1) Review the artist's background to ensure he/she has the experience and knowledge to design, fabricate and install large-scale artworks;
- 2) Review the artwork itself to determine if the nature and style of the artwork is appropriate to the site;
- 3) Determine if the proposed artwork is appropriate in scale for the overall development; and
- 4) Review the location of the artwork for visibility to the public.

The purpose of this report is to request that the Arts Commission consider approval of the proposed artwork. Under the Art in Private Development Ordinance, the Arts Commission is authorized to make a final determination of the proposed artwork and the City Council is not scheduled to consider this item. The Commission's decision, however, may be appealed to the City Council by the developer.

EXISTING POLICY

Sunnyvale Municipal Code 19.52 - Art in Private Development

ENVIRONMENTAL REVIEW

A Supplemental Environmental Impact Report (SEIR) (SCH # 2001052121) was prepared for the underlying project, Moffett Towers II. Consistent with SMC Chapter 19.52 (Art in Private Development), art was a required component of the project and project conditions of approval required the applicant to provide a bond for the required art and meet with the Arts coordinator regarding the project's art concept and integration throughout the campus. The City Council certified the SEIR, adopted a statement of overriding considerations and approved the project on June 14, 2016 (RTC 16-0556).

DISCUSSION

Project Location: This project is a 47.4-acre parcel located in North Sunnyvale (Attachment 1 - Vicinity Map). This area of Sunnyvale consists predominantly of large office campuses, such as Lockheed Martin to the north, Google to the south, Juniper Networks to the east and Moffett Towers I to the west. Staff anticipates the campus will receive both pedestrian and vehicular traffic due to the

number of workers that will be employed in the new office buildings, as well as the number of workers already employed by the surrounding businesses.

Project Description: Moffett Towers II consists of five new 8-story Class A office buildings, one 2-story amenities building, two 4-story parking structures, one 5-story parking structure and surface parking (Attachment 2 - Site Plan). The campus is centered around the amenities building and a large outdoor area designed to accommodate a variety of active and passive recreation activities. The outdoor area includes gardens, a pool, amphitheater and sports courts. One of the 4-level parking structures will also offer a 2-acre "High Garden" on the rooftop which includes open space areas, a running track and picnic and seating areas.

Artwork Location: The proposed artwork will reside in three locations on the site that are smaller parklet areas separated from the larger central outdoor activities area (Attachment 3, 4 and 5 - Artwork Locations). Each of the parklet areas will be adjacent to the public right of way, with Site 1 residing along 11th Avenue, Site 2 along 5th Avenue and Site 3 along E Street. All three sites will be visible to passing motorists and accessible to the public.

Selected Artist: The artist selected for the project is Southern California artist Cliff Garten (Attachment 6 - Artist's Resume). Mr. Garten has been active in the public art arena since 1990. He has received civic commissions for major U.S. cities such as: Austin, Texas; Los Angeles, California; Cerritos, California; Rochester, New York; Denver, Colorado; Calgary, Alberta, Canada; Arlington, Virginia; Hillsboro, Oregon; Clearwater, Florida; and Salt Lake City, Utah. Locally, Mr. Garten has major public commissions at the Tully Library in San Jose; San Francisco General Hospital in San Francisco; the Transit Center in Dublin; and the Veterans Memorial Building in Walnut Creek. Mr. Garten has completed three previous projects in Sunnyvale: Moffett Towers in 2012; the Courtyard by Marriott in 2014; and most recently, Moffett Gateway in July 2016. He is also in fabrication for the Moffett Place public art component, which was approved by the Arts Commission in November 2014, as well as the Wolfe@Central project approved by the Arts Commission in September 2016.

The artist's work is born from his interest in the relationship between sculpture and landscape and how art creates public spaces. His work often creates a spatial composition of earthworks, landscaping, sculpture, light, architecture and public plazas, intended to be both beautiful and functional. He writes in his self-description that the places he creates "must be experienced, as opposed to looked at, because they do not enlist a single object, but are the sum of what happens on any specific site."

Images of Mr. Garten's installations and sculpture environments can be found at cliffgartenstudio.com.

Artwork Proposal: For this project, the artist has created three sculpture environments entitled "Suturis" (Attachment 7 - Computer Rendering of Site 1). Each environment will not only be similar and include landforms, planting, benches and sculptures, it will also be scaled and arranged specifically for its site.

At the street entry to each of the three sites are two 18' long, 10' tall stainless steel sculptures that form a gateway from the street to the interior of the site (Attachment 8 - Computer Rendering of Stainless Steel Sculptures). The stainless steel is laser-cut in a floral pattern and the double walled construction of the sculptures will catch light, as well as diffuse it, creating a sense of movement

(Attachment 9 - Example of Laser-Cut Floral Pattern).

As the viewer enters the gateway, the semi-transparent sculptures begin to curve and transform into a 1'6" wide cement band that is etched with a matching floral pattern. (Attachment 10 - Computer Rendering of Etched Concrete Band). This 18' band undulates in an arc connecting the two stainless steel sculptures. At times, the concrete band is grade-level and at times, it is raised to 3'5" to act as a bench (Attachment 11 - Computer Rendering of Concrete Benches).

Throughout the remainder of each site, the viewer will encounter additional cast concrete benches etched with a floral pattern, berms of grasses, ground plane areas of decomposed granite and paved walking paths, as well as 10-40 replanted trees from the previous site.

Before leaving the parklet through the interior entry, the viewer will come upon two additional stainless steel screen sculptures. These sculptures will be single walled and smaller than their counterparts situated on the street-side entry to the parklet, but they will have a similar laser-cut floral pattern.

"The twisting of (the concrete) band, becoming a solid bench and then seamlessly moving into a semi-transparent stainless steel sculpture characterizes the kinds of motions that are set up throughout the landscape sculpture not only in solid material, but in earth and planting," states the artist. "The path of our bodies is directed by the motions of the objects on the ground plane and by the vertical sculptures and we are held by the different aspects of the landscape and the sculpture in a place whose design has a unique logic. It is not only about the functions it forms, but it is making a strong artistic statement while it provides those functions."

Lighting Plan: The artist is proposing to light both sides of the stainless-steel sculptures and stainless-steel screens with in-grade spot lights (Attachment 12 - Computer Rendering of Stainless Steel Sculptures at Night). The pathways will also be riddled with pedestrian lamps and each of the replanted trees will be up lit by two ground level spot lights (Attachments 13, 14 and 15 - Lighting Plans).

Maintenance: Maintenance on the artwork is minimal, consisting of a power washing and gentle detergent when needed, followed by a wax application. The artist has provided the developer with detailed instructions on how to care for the sculptures and benches.

FISCAL IMPACT

If approved, the developer will be responsible for design, fabrication and installation costs of the artwork, as well as ongoing maintenance. There is no fiscal impact on the City's operating budget other than incidental staff time to monitor the project, which is budgeted in the Art in Private Development Program.

PUBLIC CONTACT

Public contact was made through posting of the Arts Commission agenda on the City's official-notice bulletin board, on the City's website, and the availability of the agenda and report in the Office of the City Clerk.

ALTERNATIVES

1. Approve the artwork as it is proposed.

2. Not approve the artwork as it is proposed.
3. Take other action as deemed appropriate.

RECOMMENDATION

...Recommendation

Alternative 1: Approve the artwork as it is proposed. Staff concludes that the proposal adequately meets the criteria of the Art in Private Development requirement.

...Staff

Prepared by: Kristin Dance, Community Services Coordinator

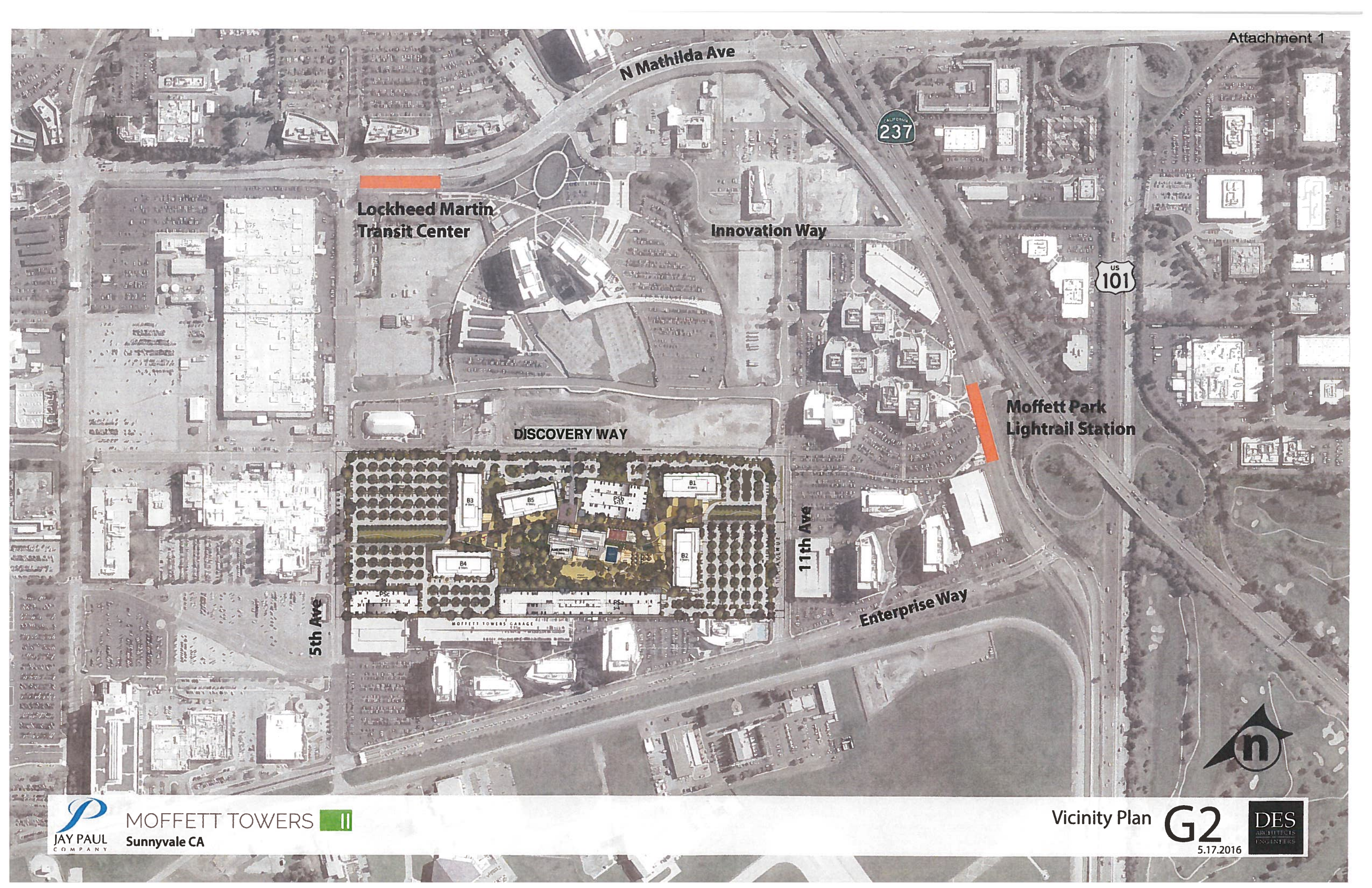
Reviewed by: Trenton Hill, Community Services Manager

Reviewed by: Daniel Wax, Superintendent of Community Services

Approved by: Cynthia E. Bojorquez, Director, Department of Library and Community Services

ATTACHMENTS

1. Vicinity Map
2. Site Plan
3. Artwork Locations (Site 1)
4. Artwork Locations (Site 2)
5. Artwork Locations (Site 3)
6. Artist's Resume
7. Computer Rendering of Site 1
8. Computer Rendering of Stainless Steel Sculptures
9. Example of Laser-Cut Floral Pattern
10. Computer Rendering of Etched Concrete Band
11. Computer Rendering of Concrete Benches
12. Computer Rendering of Stainless Steel Sculptures at Night
13. Lighting Plan (Site 1)
14. Lighting Plan (Site 2)
15. Lighting Plan (Site 3)





CLIFF GARTEN STUDIO
cg@cliffgartenstudio.com
1315 PRESTON WAY VENICE, CA 90291
T. 310.392.2060
CLIFFGARTENSTUDIO.COM

Site 1 - View 6

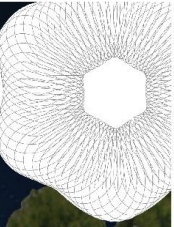
CLIFF GARTEN STUDIO
cg@cliffgartenstudio.com
1315 PRESTON WAY VENICE, CA 90291
T. 310.392.2060
cliffgartenstudio.com



Site 1 - View 5

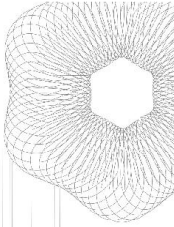


+ CLIFF GARTEN STUDIO
cg@cliffgartenstudio.com
315 PRESTON WAY VENICE, CA 90291
T. 310.392.2060
CLIFFGARTENSTUDIO.COM



Site 1 - View 8

CLIFF GARTEN STUDIO
 cg@cliffgartenstudio.com
 1315 PRESTON WAY VENICE, CA 90291
 T. 310.392.2060
 CLIFFGARTENSTUDIO.COM



Building 1

@ Grade Flood Fixtures
 Aimed at Screens.

Park Entry

Pedestrian Fixtures
 Along Path.

@ Grade Flood Fixtures
 Aimed at Screens.

Up Lighting on Trees.
 2 per Tree

Vehicular Entry

11th Street

Building 2

Lighting Legend



Site lighting pedestrian fixture -
 ARB Arbor Post Top - to match campus pathway fixture

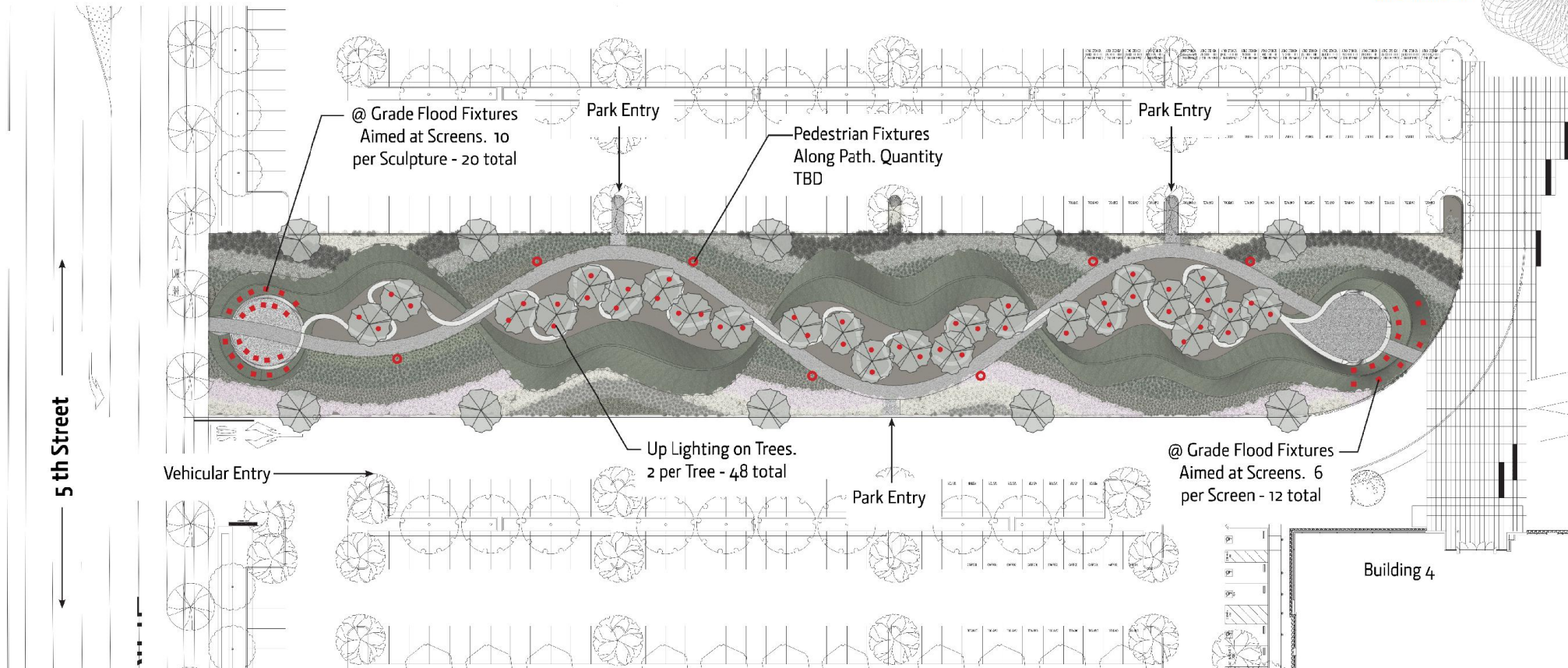


Flood Lights for Sculpture Screens -
 Luminpulse LBS - Similar or better



Tree up-lights - M9710/M9730 19 W LED Monochromatic
 Modular In-Grade Luminaire - Similar or Better

Lighting Plan - Site 1



Lighting Legend



Site lighting pedestrian fixture -
 ARB Arbor Post Top - to match campus pathway fixture

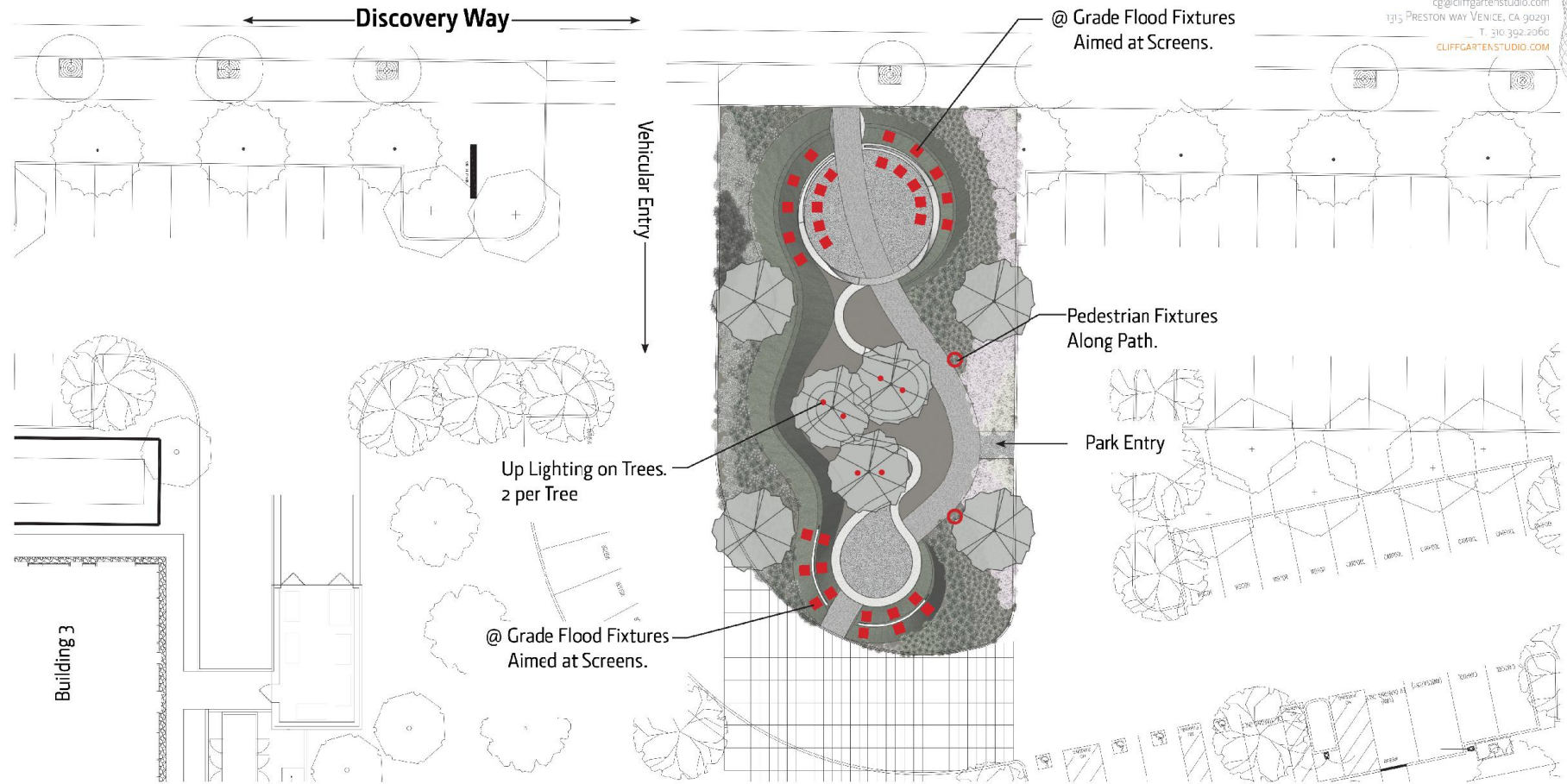


Flood Lights for Sculpture Screens -
 Luminpulse LBS - Similar or better



Tree up-lights - M9710/M9730 19 W LED Monochromatic
 Modular In-Grade Luminaire - Similar or Better

+ CLIFF GARTEN STUDIO
cg@cliffgartenstudio.com
1315 PRESTON WAY VENICE, CA 90291
T. 310.392.2060
CLIFFGARTENSTUDIO.COM



Lighting Legend



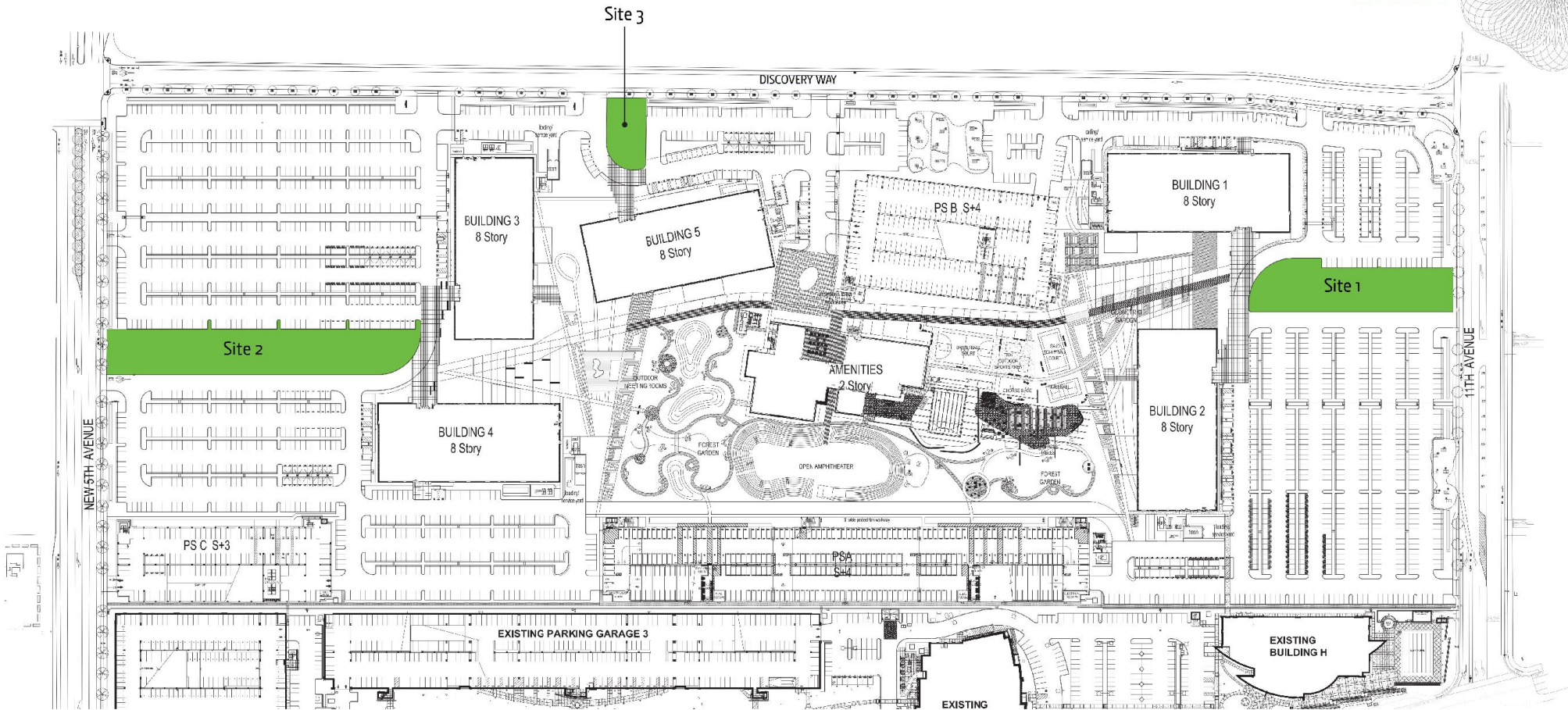
○
Site lighting pedestrian fixture -
ARB Arbor Post Top - to match campus pathway fixture



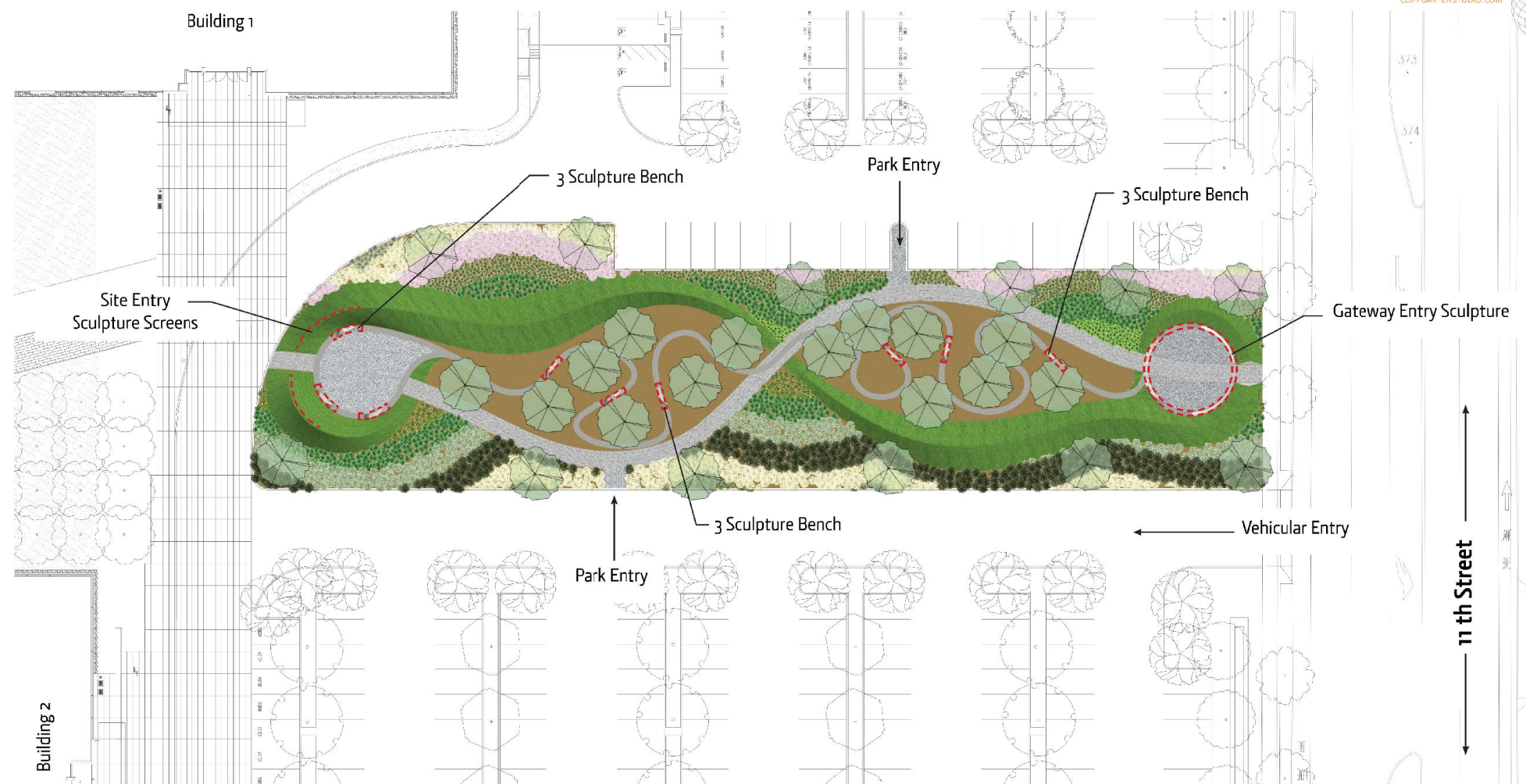
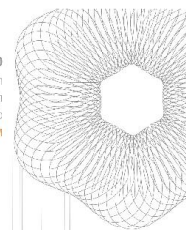
■
Flood Lights for Sculpture Screens -
Luminpulse LBS - Similar or better



● ●
Tree up-lights - M9710/M9730 19 W LED Monochromatic
Modular In-Grade Luminaire - Similar or Better



CLIFF GARTEN STUDIO
cg@cliffgartenstudio.com
1315 PRESTON WAY VENICE, CA 90291
T. 310.392.2060
CLIFFGARTENSTUDIO.COM



11th Street



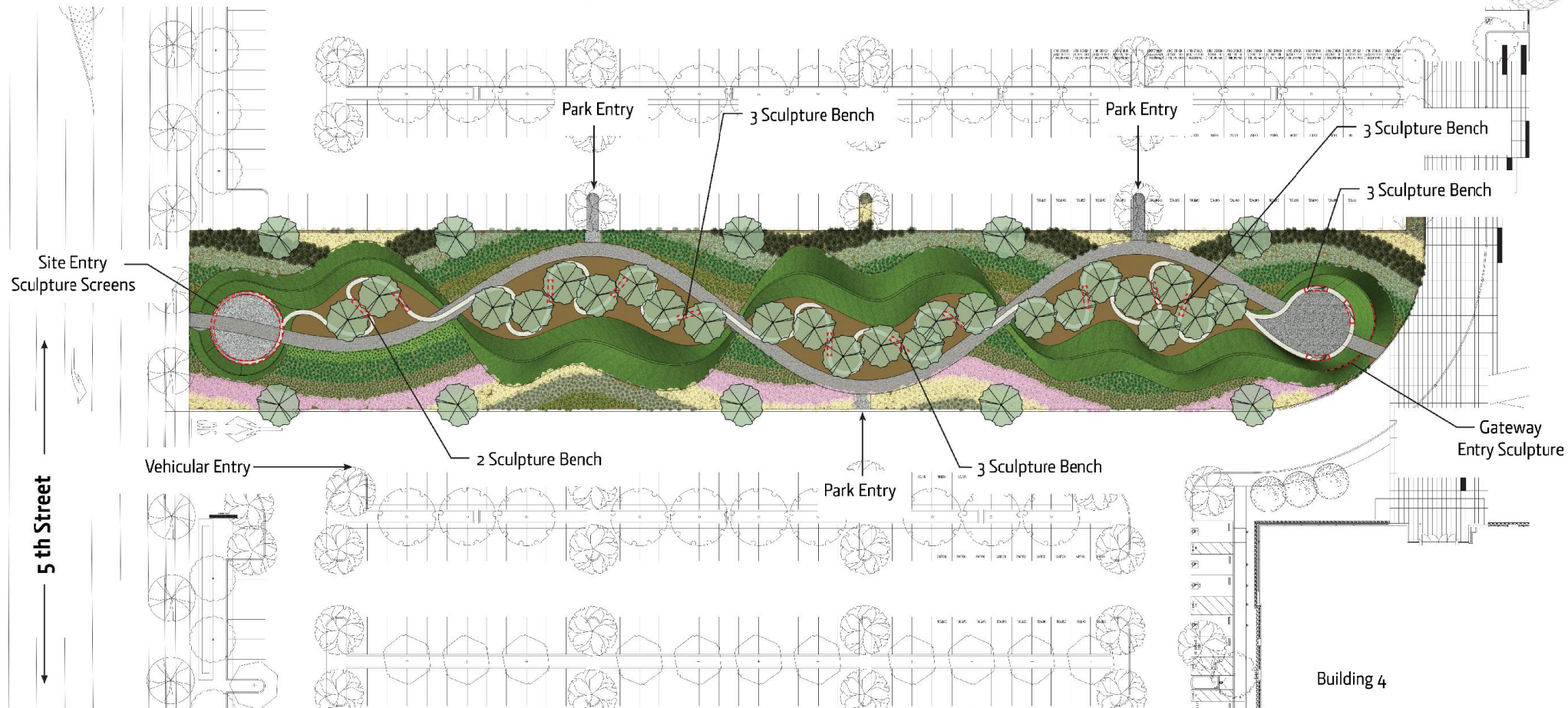
Gateway Entry Sculpture - qty. 1 set (includes 1 large and 1 small assembly)

Site Entry Sculpture Screens - qty - 1 set (Includes 2 screens)

Sculpture Bench - qty 9 - TBD

Plan - Site 1

CLIFF GARTEN STUDIO
 cg@cliffgartenstudio.com
 1315 PRESTON WAY VENICE, CA 90291
 T. 310.392.2060
 CLIFFGARTENSTUDIO.COM



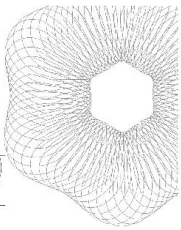
Gateway Entry Sculpture - qty. 1 set (includes 1 large and 1 small assembly)


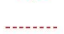
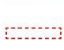
Site Entry Sculpture Screens - qty - 1 set (Includes 2 screens)

Sculpture Bench - qty 14 - TBD

Plan - Site 2

CLIFF GARTEN STUDIO
cg@gartenstudio.com
1315 PRESTON WAY VENICE, CA 90291
T. 310.392.2060
CLIFFGARTENSTUDIO.COM

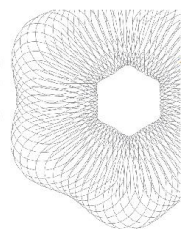


-  Gateway Entry Sculpture - qty. 1 set (includes 1 large and 1 small assembly)
-  Site Entry Sculpture Screens - qty - 1 set (Includes 2 screens)
-  Sculpture Bench - qty 2 - TBD

Plan - Site 3

CLIFF GARTEN RESUME

+ CLIFF GARTEN STUDIO
cg@cliffgartenstudio.com
1315 PRESTON WAY VENICE, CA 90291
T 310.392.2060



SELECTED CIVIC SCULPTURE

Rassembleau, 1601 Vine Street and Courtyard, Philadelphia, PA, 2016-2017. Commissioned by the Philadelphia Redevelopment Authority and Property Reserve Inc., Robert A. M. Stern Architects.

Aquileans, Waterfront Promenade, Juneau, AK 2017. Commissioned by the City and Borough of Juneau, Docks and Harbors.

Retexo, City Line, Office and Residential Town, Richmond, TX, 2017. Commissioned by KDC Real Estate Development Investments, consulting, Architectural Arts Co.

Junipers, Eastern Michigan State University, East Lansing, MA 2017. Commissioned by Eastern Michigan State University, Art on Campus.

Liliales, Broadway Plaza, Walnut Creek, CA 2016. Commissioned by Maceich and City of Walnut Creek Public Art Program.

Even Flow, Dulles Airport Silver Line, Dulles Airport + Metro Rail Station, Washington, D.C., 2016. Commissioned by the Public Art Program of Washington Metropolitan Area Transit Authority.

Ebb and Flow, Gateway Campus, Sunnyvale, CA 2015. Commissioned by the City of Sunnyvale, Arts Commission and the Jay Paul Company.

Quadrads, Los Cerritos Center, Cerritos, CA 2015. Commissioned by Maceich, City of Cerritos Fine Arts Commission.

Monarch, Kaiser Permanente Mission Bay Medical Offices, San Francisco, CA 2015. Commissioned by Kaiser Permanente.

Land and Sky Bridge, Brookwood Overcrossing, Hillsboro, OR, 2015. Commissioned by The City of Hillsboro Public Art Program, in conjunction with the Oregon Department of Transportation.

Ethereal Bodies 8, Zuckerberg General Hospital and Trauma Center, San Francisco, CA, 2015. Commissioned by the San Francisco Arts Commission.

Middens, Clearwater Downtown Boat Slips & Promenade, Clearwater, FL, 2015. Commissioned by City of Clearwater Public Art & Design Program.

Los Angeles Opens its Heart of Compassion, The Vermont Building, Los Angeles, CA, 2014. Commissioned by JH Snyder Co.

Illuvium and Auras, Public Art Master Plan for Landscape Sculpture, Google Campus, Sunnyvale, CA, 2015. Commissioned by the City of Sunnyvale Arts Commission and the Jay Paul Company.

Corridor of Light, Lighting Infrastructure Plan for North Lynn Street Public Art Initiative, District of Rosslyn, Arlington, VA, 2008-2021. Commissioned by Arlington County Public Art, Cultural Affairs Division

of the Department of Parks, Recreation, and Cultural Resources, Rosslyn Renaissance and Rosslyn Business Improvement District.

Luminous Crossings, Gateway Station for the 7th Avenue Light Rail Corridor, Calgary, Alberta, Canada, 2013. Commissioned by the City of Calgary, Calgary Public Art.

Ribbons, 50 United Nations Plaza, General Services Administration, Region 9, Pacific Rim Headquarters, San Francisco, CA, 2013. Commissioned by the General Services Administration, Program in Art and Architecture.

Receptor, Patriot Ridge, adjacent to the Topographic National Geospatial-Intelligence Agency, Springfield, VA, 2013. Commissioned by Corporate Office Properties Trust.

Baldwin Hills Gateway, Ken Hahn State Recreation Area, Los Angeles, CA, 2013. Commissioned by Baldwin Hills Conservancy. Project administered by Los Angeles Neighborhood Initiative (LANI) with a grant from the State of California.

Blue Eclipse, Entry Plaza and Rotunda Lobby at the Palo Alto Division Building 520, Palo Alto, CA, 2012. Commissioned by the Department of Veterans Affairs, Palo Alto Health Care System.

Bullet and Suspect, Denver Crime Lab, Denver, CO, 2012. Commissioned by the Denver Office of Cultural Affairs' Public Art Program.

Needle and Spindle, Village Gate ARTWalk 2, Rochester, NY, 2012. Commissioned by The City of Rochester, New York with funds from The American Recovery and Reinvestment Act of 2009.

Rhytons, Zachary Scott Theatre, Austin, TX, 2012. Commissioned by City of Austin Art in Public Places.

NeuroStar, University of Utah - James L. Sorenson Molecular Biotechnology Building, Salt Lake City, UT, 2011. Commissioned by the Utah Arts Council, Utah Public Art Program.

Levine Lanterns, Illuminated Sculptures for Levine Center for the Arts, Charlotte, NC, 2011. Commissioned by the Arts & Science Council, Public Art Program Charlotte, Mecklenburg and the Levine Foundation.

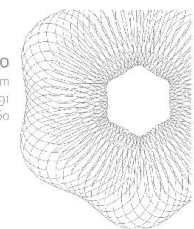
Tower II, Cityplace, Dallas, TX, 2011. Commissioned by Oak Creek Partners, Ltd. Gifted to the City of Dallas.

Mesquite Columns, Mesquite City Hall, Mesquite, TX, 2011. Commissioned by the City of Mesquite, Mesquite Arts Council.

Elevations (1), Martin Luther King Center for Public Health, Los Angeles, CA, 2011. Commissioned by the Los Angeles County Arts Commission's Civic Art Program.

CLIFF GARTEN RESUME

+ CLIFF GARTEN STUDIO
cg@cliffgartenstudio.com
1315 PRESTON WAY VENICE, CA 90291
T 310.392.2060



SELECTED CIVIC SCULPTURE (Continued)

Schooling, University of Rhode Island Graduate School of Oceanography, Narragansett, RI, 2011. Commissioned by Rhode Island State Council of the Arts, Public Art Program.

Sea Spires, Long Beach, CA, 2011. Commissioned by the Long Beach Transit Authority, City of Long Beach Arts Council, Public Art.

Sentient Beings, Art Institute of California, North Hollywood, CA, 2009. Commissioned by the Community Redevelopment Agency of Los Angeles, Art Program, and the JH Snyder Co.

Nano Plaza, Engineering Building II Plaza, University of Texas at San Antonio, San Antonio, TX, 2009. Commissioned by the University of Texas at San Antonio, Art on Campus Program.

YMI Chandeliers, YMI Jeans, Los Angeles, CA 2009. Commissioned by YMI Jeanswear, Los Angeles County Public Art Program.

Sea Songs, Santa Monica Parking Structures 2, 4, and 5, Third Street Promenade, Santa Monica, CA, 2009. Commissioned by City of Santa Monica, Public Art Program.

Avenue of Light, Lancaster Avenue Median Illuminated Sculptures, Ft. Worth, TX, 2009. Commissioned by the City of Fort Worth and Fort Worth Public Art.

Strings, University of Wisconsin School of Medicine and Public Health Interdisciplinary Research Center, Madison, WI, 2009. Commissioned by the Wisconsin Arts Board.

Laguna Line (The possibility of the everyday), Laguna Honda Hospital, San Francisco, CA, 2009. Commissioned by the San Francisco Arts Commission.

Three Luminous Bodies, Central Phoenix/East Valley Light Rail Transit, Baseball Park and Symphony Train Platforms, Phoenix, AZ, 2009. Commissioned by Valley Metro Rail, Art Program.

Stitches, South Boulevard Corridor Infrastructure Project, Sharon Rd. West and South Boulevard, Charlotte, NC, 2009. Commissioned by the Arts & Science Council Public Art Program, Charlotte, Mecklenburg.

Making Tracks, The Olympic Legacy Gateway Project, Highway 224, Park City, UT, 2005. Commissioned by Olympic Legacy Committee, Park City UT.

Sonoran Suite, CAP Basin Sports and Community Park, Scottsdale, AZ, 2005. Commissioned by the Scottsdale Public Art Program.

Sammamish Meander, York Bridge Replacement, Redmond, WA, 2005. Commissioned by 4 Culture and King County Division of Roads and Bridges.

Walnut Creek Veterans' Memorial, City Hall Block, Walnut Creek, CA, 2004. Commissioned by City of Walnut Creek Public Art Program in cooperation with the City of Walnut Creek.

Two Clouds, San Jose Public Library, Tully Road Branch, San Jose, CA, 2004. Commissioned by Office of Cultural Affairs Public Art Program, City of San Jose.

California Song, Fountain and Park, Block 225, Capitol Area East End Complex, Sacramento, CA, 2002. Commissioned by the State of California, Capitol Area East End Complex, Sacramento, CA.

Salt Lake Vignettes, 2002 Olympics, Salt Lake City, UT, 2002. Commissioned by the Salt Lake City Arts Council.

Prairie Ice, University of Minnesota-Morris, Math and Science Building, Morris, MN, 2001. Commissioned by Public Art on Campus, University of Minnesota.

Arcade Street Bridge, Little Canada and Maplewood, MN, 2000. Lead Artist with Metropeligo Urban Design. Commissioned by Ramsey County Public Works, Administered by Public Art St. Paul.

New Environments for Healing, Laurance S. Rockefeller Outpatient Pavilion, Memorial Sloan Kettering Cancer Center, New York, NY, 1999. Lead Artist with Perkins+Will New York. Commissioned by Memorial Sloan Kettering Cancer Center, New York, NY.

Central Union Terminal Renovation Project, Toledo, OH, 1997. Commissioned by the City of Toledo, Ohio.

Duluth Trilogy, Lake Superior College, Duluth, MN, 1996. Commissioned by the Minnesota Percent for Art in Public Places.

A Garden for Coyote, Coyote Ridge Correction Facility, Connell, WA, 1996. Commissioned by Art in Public Places, Washington State Arts Commission.

Biotechnology and Genetics Center, University of Wisconsin, Madison, WI, 1995. Commissioned by the Wisconsin State Arts Board.

The Saint Paul Cultural Garden, St. Paul, MN, 1992. Commissioned by The Saint Paul Foundation. Administered by Public Art Saint Paul.

Entry Courtyard, Beaverton City Hall, Beaverton, OR, 1992. Commissioned by Beaverton Arts Commission.

CLIFF GARTEN RESUME

CIVIC ART PLANNING

Public Art Master Plan for Landscape Sculpture at Moffett Place Corporate Campus, Landscape Design, Earthworks, Granite and Bronze Fountains, Sunnyvale, CA, 2015. Commissioned by the City of Sunnyvale and the Jay Paul Company.

A Plan for Public Art Practice in the Central Corridor, A Living Plan (Green Line, Light Rail). The Central Corridor Public Art Plan, Saint Paul, MN, 2012. Lead Artist, commissioned by Public Art Saint Paul.

Public Art Master Plan for Landscape Sculpture at Moffett Towers Corporate Campus, Landscape Design, Earthworks, Granite and Bronze Fountains, Sunnyvale, CA, 2009. Commissioned by the City of Sunnyvale and the Jay Paul Company.

A Public Art Plan for the Expressive Potential of Utility Infrastructure,

AWARDS, FELLOWSHIPS AND GRANTS

- 2014 Awards for Ribbons, 50 United Nations Plaza, San Francisco, CA.
ENR California's Best Projects 2014, Award of Merit
California Preservation Foundation Design Award, Rehabilitation Category
Americans for the Arts, Public Art Network "Year in Review"
CSA PBS Commissioner Award
CSA Federal Building Champion, Favourite Green Building
CSA Design Awards
Building Design+Construction Reconstruction Awards, Gold Award Winner
CMAA National Project Achievement Award, Buildings - Renovation/Modernization
Quality of Life Award, American Society of Landscape Architects, Southern California Chapter
- 2013 Focus on Excellence - Annual Best of NADIP (Commercial Real Estate Development Association) Northern Virginia Award for Receptor, Springfield, VA
- 2012 American Institute of Architects, Fort Worth, TX, Quality in Construction/Artisan Award for Avenue of Light
- 2010 Americans for the Arts, Public Art "Year in Review" Award for Sentient Beings, North Hollywood, CA
American Society of Landscape Architects, Northern California Chapter, Merit Award for the Moffett Towers Corporate Campus
- 2008 Americans for the Arts, Public Art "Year in Review" for an Exemplary Innovative Public Artwork Created in 2008, Sammamish Meander, York Bridge, Redmond WA
Award of Excellence, Community Outreach and In-House

City of Calgary, Utilities and Environmental Protection Department, with Via Partnership, Calgary, Alberta, Canada, 2007. Commissioned by the Public Art Program, City of Calgary with the Utilities and Environmental Protection Department.

Mid-City Exposition Boulevard Light Rail Art Program, Los Angeles, CA, 2006. Lead Artist: with Zimmer Gunsul Frasca Architects. Commissioned by Los Angeles Metropolitan Transit Authority (MTA), Public Art.

Art Master Plan for the Light Rail Cross County Extension, St. Louis, MO, 2003. Commissioned by the Bi State Development Agency, Illinois, MI.

Civic Art Master Plan for Scottsdale's Sonoran Core and Airport Park Character Areas, City of Scottsdale, AZ, 2000. Commissioned by the Scottsdale Cultural Council and the City of Scottsdale, Arizona.

Initiative Award from the Consulting Engineers of Alberta, Via Partnership, Cliff Garten Studio, CH2M Hill Canada

2007 Valley Forward, Art in Public Places: Award for Environmental Excellence, Sonoran Suite, Scottsdale, AZ
American Council of Engineering Companies Silver Award for Structural Systems, York Bridge Replacement Project, Redmond, WA

2006 Environmental Excellence Award, Public Art for CAP Basin Sports Complex, Valley Forward Association, Phoenix, AZ
Professional Design Award for CAP Basin Sports Complex, American Society of Landscape Architects, Phoenix, AZ

2003 Americans for the Arts, Public Art "Year in Review" for an Exemplary Innovative Public Artwork Created in 2003, California Song, Sacramento, CA

1995-97 Archibald Bush Foundation Artist Fellowship

1994 Archibald Bush Foundation Leadership Fellows Program

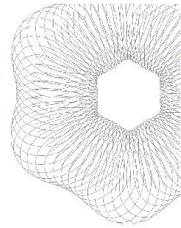
1993 Leadership in the Neighborhoods Fellowship, The St. Paul Companies

1989 Visual Arts Travel and Study Grant, Italian Gardens, The Jerome Foundation

1985 Arts-Midwest/National Endowment for the Arts Regional Fellowship

1980 Minnesota State Arts Board Grant for Visual Artist

+ CLIFF GARTEN STUDIO
cg@cliffgartenstudio.com
1315 PRESTON WAY VENICE, CA 90291
T. 310.392.2060



RECENT EXHIBITIONS

Tapping the Third Realm
The Ben Maltz Gallery at Otis College of Art and Design (OTIS)
September 22nd - December 8th, 2013
Curators: Meg Linton and Carolyn Peter

SELECTED PRESS

Glasstire, December 1, 2016 "Five New Public Art Works For a Richardson Mixed-Use Development"

Dallas News, December 1, 2016 "What's a big green rabbit doing at Richardson's CityLine" by Steve Brown

Illuminate SF, October 2016 "Monarch" by Kathleen Wheeler

San Francisco Chronicle, May 22, 2016 "Transforming Care" by Corey Sweet

LA Weekly, May 6, 2016 "Best Nighttime Sights" by Maya Kachroo-Levine

New York Times, December 2, 2015 "Facebook Chief Vows to Donate 99% of His Shares for Charity" by Vinu Goel and Nick Wingfield

KGRW's Design & Architecture, May 13, 2015 "Cliff Garten Opens Heart of Compassion in Koreatown" by Frances Anderton

Architect's Newspaper, March 3, 2015 "Artist Cliff Garten Lights Up This Loud Sculpture Covering a Los Angeles Parking Garage" by Sam Lubell

Los Angeles Times, November 29, 2014 "Koreatown's Old Cool Buildings Point to L.A.'s Future" by Christopher Hawthorne

Landscape Architecture Magazine, July 2014 "Cliff Garten: Found Energy" by Lydia Lee

Arch Daily - Selected Works, December 18, 2013 "Ribbons/Cliff Garten: Studio"

Contemporist, December 18, 2013 "Ribbons by Cliff Garten Studio"

Curbed Los Angeles, November 24, 2013 "LA Artists Making the World Better"

KCET, November 22, 2013 "Tapping the Third Realm: Artists Exploring Spiritual Dimensions" by Tyler Stallings

SF Examiner, November 7, 2013 "Renovation Complete at 50 United Nations Plaza" by Jessica Kwong

Westside People, Nov-Dec, 2013 "Cliff Garten: Recreating Public Space"

Government Engineering, September-October, 2013 "A Bridge as Sculpture"

Sculpture, May Vol. 32 No. 4, 2013 "Public Sculpture in an age of diminishing resources: A Conversation with Cliff Garten"

California Home + Design, Spring 2013 "In the Spotlight featuring Cliff Garten" by Sarah White

EDUCATION

Master of Fine Arts, Sculpture, Rhode Island School of Design, Providence, RI
Master of Landscape Architecture with Distinction, Graduate School of Design, Harvard University, Cambridge, MA
Bachelor of Fine Arts, New York State College of Ceramics, Alfred, NY

Westword, November 6, 2012 "The Denver Police Crime Laboratory Offers Engaging New Art"

Sculpture, April Vol. 31 No. 3, 2012 "Recent Submissions"

Wall Street Journal, February 10, 2012 "Where Art and Architecture Collide", by Nancy Kates

Public Art Review, Issue 45 Fall/Winter 2011 "Old and New: In Rhode Island, tradition and innovation merge to benefit the community"

California Home + Design, October 6, 2011 "South LA Gets New Public Art By Cliff Garten" by Marissa Gluck

Urban Land Magazine, July 29, 2011 "Designers vs. Engineers: Pushing for Infrastructure on a Human Scale" by Jack Skelly

FORM Magazine, May/June 2011 "50 United Nations Plaza"

Design Bureau Magazine, March/April 2011 "Luminescent Design" by Christopher Moraff

Public Art Review, 20th Anniversary issue 40 Spring/Summer, 2009 "A Watershed moment, for Public Art in Calgary" by Cliff Garten

Public Art Review, 20th Anniversary issue 39 Winter 2008 "Reflections on Public Art or the New American Frontier" by Todd Bressi and Meredith McKinley

The Practice of Public Art, May 8, 2008 by Ed Cameron, Cartiere and Shelly Willis

Wall Street Journal, September 1, 2007 "It's Yahoo's Lawn, But This Artist Says Keep Off the Grass" by Kely Crow

The New York Times, August 22, 1999 "For Hospital Services, Pleasant Settings"

The Lure of the Local: Senses of Place in a Multicentered Society, April 1, 1998 by Lucy R. Lippard

BIOGRAPHICAL PRESS

Landscape Architecture Magazine, July 2014 "Cliff Garten: Found Energy" by Lydia Lee

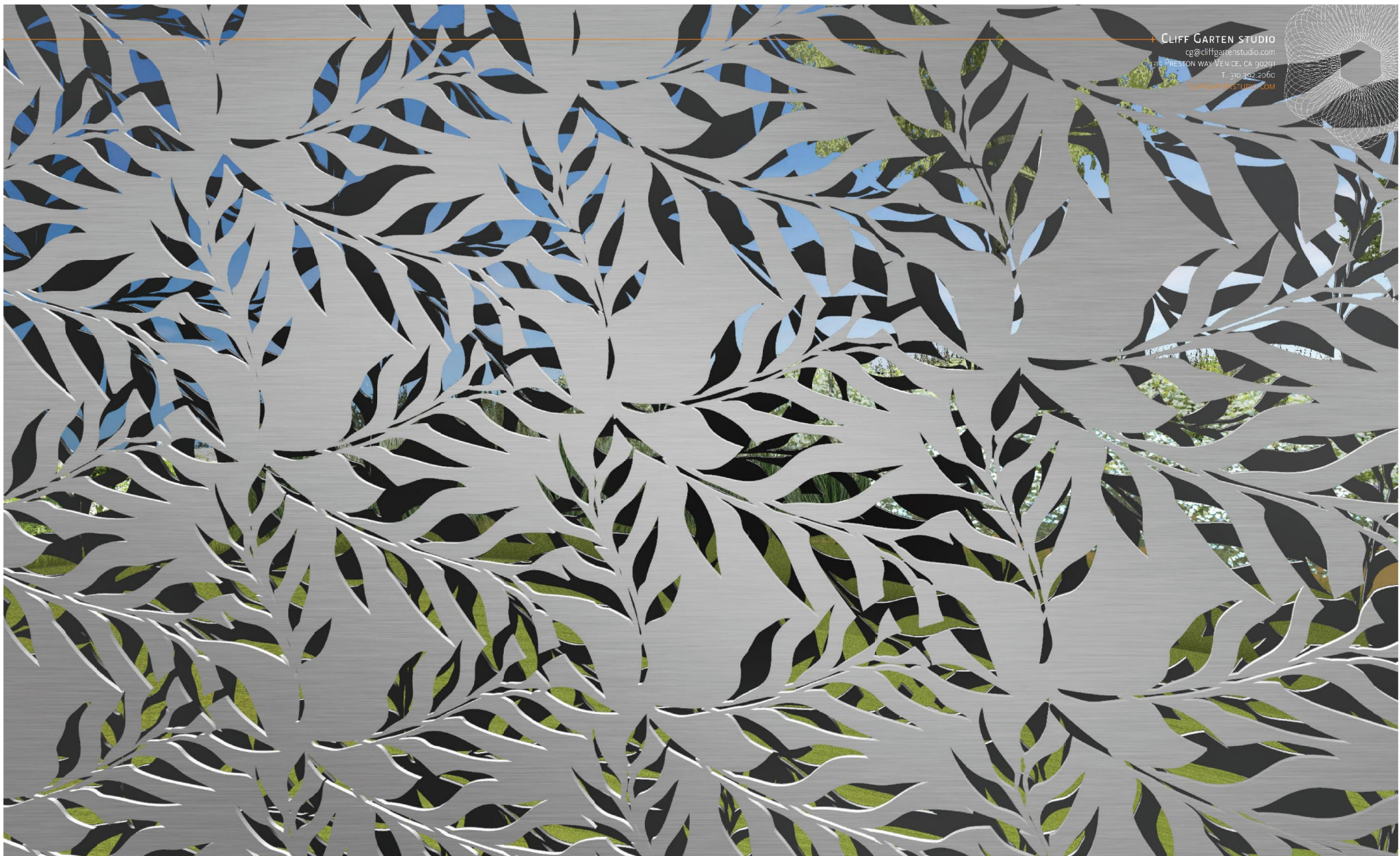
Sculpture Magazine, May Vol. 32 No. 4, 2013 "Public Sculpture in an age of diminishing resources: A Conversation with Cliff Garten" by Sarah White



Site 1 - View 1



Site 1 - Public View 4



Site 1 - View 7



City of Sunnyvale

Agenda Item

17-0325

Agenda Date: 3/15/2017

Approve Master Work Plan

Draft 2017 Work Plan

Arts Commission Annual Calendar

MEETING DATE	AGENDA ITEM/ISSUE
January 18	<ul style="list-style-type: none"> Review Master Work Plan
February 15	<ul style="list-style-type: none"> Review Master Work Plan
March 15	<ul style="list-style-type: none"> Approve Master Work Plan Art in Private Development Project – Jay Paul Company/Moffett Hands on the Arts Commission Participation
April 19	<ul style="list-style-type: none"> Public Art Master Plan Update Leadership Sunnyvale presentation (tentative)
May 10*	<ul style="list-style-type: none"> Review Recommended Budget (Joint Meeting with Parks & Recreation Commission)
May 17	<ul style="list-style-type: none"> Cancelled
June 21	<ul style="list-style-type: none">
July 19	<ul style="list-style-type: none"> Election of Officers Presentation (TBD)
August 16	<ul style="list-style-type: none"> Public Art Master Plan Update
September 20	<ul style="list-style-type: none"> Final month to propose Study Issues (Due to City Manager by October 1) Presentation (TBD)
October 18	<ul style="list-style-type: none">
November 15	<ul style="list-style-type: none"> Final month to rank Study Issues (if any) Presentation (TBD)
December 20	<ul style="list-style-type: none"> Final month for Annual Review of Code of Ethics and Conduct for Elected and Appointed Officials

Additional items yet to be scheduled:

1. Art in Public Places
2. Art in Private Development

Events:

Fit and Fun Fair, April 29

Hands on the Arts Festival, May 20

Friends of Sunnyvale Pottery Sale, (TBD)

October is National Arts & Humanities Month (Special Order of the Day), October 3

* Sunnyvale Civic Center (West Conference Room)

Revised 3/08/17



City of Sunnyvale

Agenda Item

17-0326

Agenda Date: 3/15/2017

Hands on the Arts Commission Participation