



City of Sunnyvale

Notice and Agenda - Final Board of Library Trustees

Monday, September 11, 2017

7:00 PM

Library Program Room, Sunnyvale Public
Library, 665 W. Olive Ave., Sunnyvale, CA
94086

CALL TO ORDER

ROLL CALL

PRESENTATION

[17-0772](#) PRESENTATION - Friends of the Sunnyvale Public Library

[17-0840](#) PRESENTATION - Information on Open Data

Attachments: [Presentation by Chief Information Officer on Open Data](#)

ORAL COMMUNICATIONS

This category provides an opportunity for members of the public to address the board on items not listed on the agenda and is limited to 15 minutes (may be extended or continued after the public hearings/general business section of the agenda at the discretion of the Chair) with a maximum of up to three minutes per speaker. Please note the Brown Act (Open Meeting Law) does not allow board members to take action on an item not listed on the agenda. If you wish to address the board, please complete a speaker card and give it to the Recording Secretary. Individuals are limited to one appearance during this section.

CONSENT CALENDAR

- 1 [17-0839](#) Approve the Board of Library Trustees Meeting Minutes of August 7, 2017

Attachments: [Draft Minutes of August 7, 2017](#)

PUBLIC HEARINGS/GENERAL BUSINESS

- 2 [17-0841](#) Overview of Library Summer Reading Program

STANDING ITEM: CONSIDERATION OF POTENTIAL STUDY ISSUES

NON-AGENDA ITEMS & COMMENTS

-Board Member Comments

-Staff Comments

INFORMATION ONLY ITEMS**ADJOURNMENT**

Notice to the Public:

Any agenda related writings or documents distributed to members of this meeting body regarding any item on this agenda will be made available for public inspection in the Sunnyvale Public Library located at 665 W. Olive Avenue, Sunnyvale, California during normal business hours and in the Library Program Room on the evening of the Board of Library Trustees meeting, pursuant to Government Code §54957.5.

Agenda information is available by contacting Library Administration at sbarajas@sunnyvale.ca.gov or (408) 730-7314. Agendas and associated reports are also available on the City's website at sunnyvale.ca.gov or at the Sunnyvale Public Library, 665 W. Olive Ave., Sunnyvale, 72 hours before the meeting.

Pursuant to the Americans with Disabilities Act, if you need special assistance in this meeting, please contact Library Administration at (408) 730-7314. Notification of 48 hours prior to the meeting will enable the City to make reasonable arrangements to ensure accessibility to this meeting. (28 CFR 35.160 (b) (1))



City of Sunnyvale

Agenda Item

17-0772

Agenda Date: 9/11/2017

PRESENTATION - Friends of the Sunnyvale Public Library



City of Sunnyvale

Agenda Item

17-0840

Agenda Date: 9/11/2017

PRESENTATION - Information on Open Data

A decorative graphic on the left side of the slide, consisting of a network of white lines and circles on a blue gradient background, resembling a circuit board or data network.

OPEN DATA

SUNNYVALE BOARD OF LIBRARY TRUSTEES MEETING

PRESENTED BY: KATHLEEN BOUTTÉ FOSTER

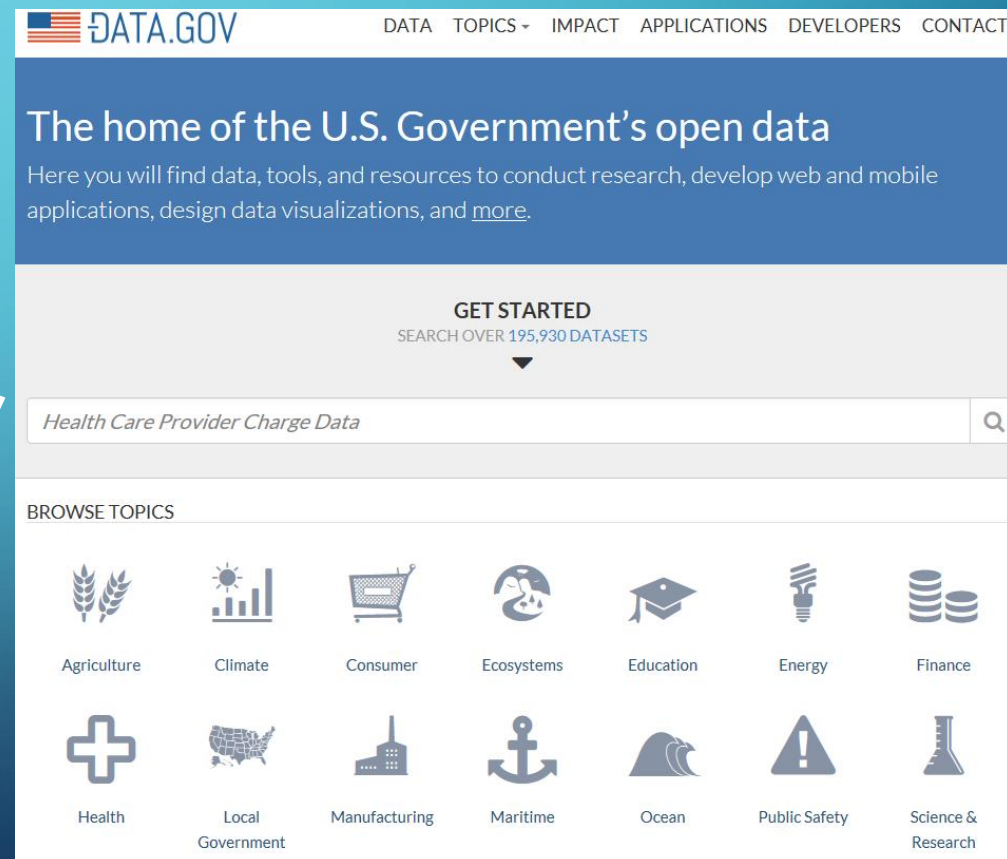
9/11/2017

WHAT IS OPEN DATA

- Open data is data that anyone can access, use or share in a machine-readable format.
- Data is re-usable without requiring further permission
 - Analysis
 - Mobile Apps
- Supports transparency in Government
- Beyond Text
 - Maps
 - Genomes
 - Mathematical Formulae
 - Bioscience

FEDERAL GOVERNMENT

- May 9, 2013 – Executive Order by former President Obama made open and machine-readable data the default for government information
- Project Open Data – best practices, software code and examples
- Project Open Data Schema – set of required fields (Title, Description, Tags, Last Update, Publisher, Contact Name)
- Data.gov
 - 195K+ Datasets
 - 50+ Organizations: Federal to Local



OPEN DATA – TRANSPARENCY & MEASUREMENT

TRANSPARENCY

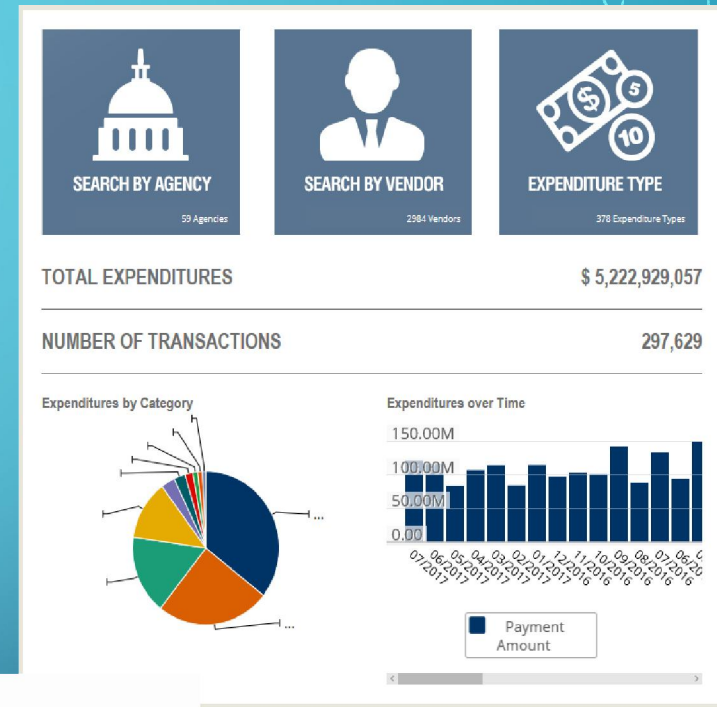
- San Mateo County Open Checkbook

- <https://data.smcgov.org/checkbook>

MEASUREMENT

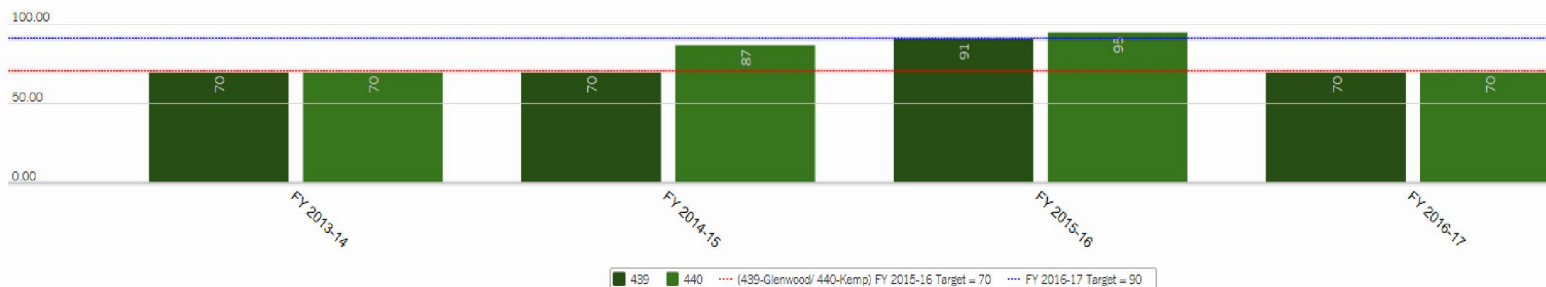
- San Mateo County Performance Measures

- <https://performance.smcgov.org/departments>



PROGRAM RESULTS

Percent of Youth not Committing a New Law Violation Within One Year of Release from Camp Glenwood and Camp Kemp



OPEN DATA – INNOVATION & MOBILE APPS

- City/County of San Francisco – Mobile App Showcase using Open Data
 - <https://datasf.org/showcase/>

DataSF

OPEN DATA

SHOWCASE

PUBLISHING

ACADEMY

RESOURCES

BLOG

Welcome to the showcase. In the future, we'll include reports, stories and feature other uses of the City's data. For now, explore the different apps by category and visit our complete apps showcase. Or [Submit your app!](#)



Environment Apps



Transit Apps



Crime Apps



View more apps...

Featured applications

OPEN DATA – SERVICE EFFICIENCY

- City of San Jose Open Spaces at City-Owned Parking Garages
 - <https://data.sanjoseca.gov/dataviews/231073/parking-garage-data/>

Parking Garage Data

Open spaces in the city owned parking garages in downtown San Jose. | [More information](#)



Garage_Name	Garage_Status	Available_Visitor_Spaces	Total_Visitor_Spaces
Fourth Street Garage	Open	450	450
City Hall Garage	Open	294	302
Third Street Garage	Open	220	220
Market San Pedro Square Garage	Open	933	1125
Convention Center Garage	Open	476	520
Second San Carlos Garage	Open	147	205

OPEN DATA – PARTICIPATION

- Santa Clara Valley Transportation Authority (VTA) Ridership Data
 - <https://data.vta.org/Transit-Operations/Ridership/q5hr-c3vh>

Table Preview

View Data →

Direction	Pattern	From Time	To Time	Start Location	End Location	On	Off	Stop	IVR Number	Stop Name
SOUTH	SB01	41040	42840	RNCHMCTY	GRATMALL	0	2	3549	63,549	PARK VICTORIA & BIG BASIN
WEST	WB01	57600	60480	KAISERSJ	SAMRHOSP	0	2	1820	61,820	SAMARITAN & SAIDEL
NORTH	NB03	66480	66720	ALMDSTA	OHLNCHNW	7	0	4729	64,729	ALMADEN STATION (0)
EAST	EB01	46440	50100	ANTOTCTR	CLRATCTR	0	2	1295	61,295	EVELYN & FAIR OAKS
NORTH	NB01	55440	59100	MTNVSTA	STANSHOP	1	1	1553	61,553	MIDDLEFIELD & EMBARCADEMENT
SOUTH	SB01	75660	78180	BASSTERM	SENTMTRY	0	6	3750	63,750	MCLAUGHLIN & SUMMERSIDE
NORTH	NB01	70200	74160	SAMRHOSP	SIERPIED	3	0	2814	62,814	BASCOM & CAMPISI
EAST	EB01	52860	56220	HNSNPAGE	ESTRIDGE	7	0	4443	64,443	HANSEN & PAGE MILL (FS)
NORTH	NB01	64740	69600	WINCSTN	MTNVIEW	0	0	4819	64,819	WHISMAN STATION (0)
EAST	EB02	50940	57600	SACHSTCR	ALUMTCTR	0	1	716	60,716	WILLIAMS & BOYNTON
SOUTH	SB03	57780	62460	ALUMROCK	TRSASTN	39	15	4774	64,774	SAN ANTONIO STATION (1)
WEST	WB03	60060	63600	7THCLRA	WLFESTCR	2	0	4069	64,069	PARK & NAGLEE

PALO ALTO LIBRARY DATASETS

- <http://data.cityofpaloalto.org/dashboards/8031/library/>

[Suggest a Dataset](#)[Visiting](#) | [Doing Business](#) | [Government](#) | [Services](#) | [Community Partners](#) | [I want to...](#)[DEVELOPMENT CENTER PERMITS](#)[LIBRARY](#)[EMERGENCY PREPAREDNESS](#)[PARKS & OPEN SPACE](#)[CITY SERVICES](#)

Library

Source: City of Palo Alto Library



Palo Alto City Library Checkout Statistics

Checkout Statistics 1981-2016							
Fiscal Year	Total	Children's		College Terrace		Downtown	
ending June	Items	Items	%	Items	%	Items	%
2016	1,400,926	204,102	14.6%	65,689	4.7%	70,636	5.0%
2015	1,499,406	314,328	21.0%	89,463	6.0%	117,039	7.8%
2014	1,364,872	339,279	24.9%	95,585	7.0%	143,642	10.5%
2013	1,512,975	342,837	22.7%	93,940	6.2%	111,837	7.4%
2012	1,559,932	349,446	22.4%	83,452	5.3%	85,822	5.5%
2011	1,476,648	371,997	25.2%	38,219	2.6%	421	0.0%
2010	1,624,785	365,559	22.5%	3,063	0.2%	71,098	4.4%
2009	1,633,955	321,950	19.7%	99,974	6.1%	76,104	4.7%
2008	1,542,116	214,802	13.9%	107,462	7.0%	70,048	4.5%
2007	1,414,509	0	0.0%	107,005	7.6%	67,227	4.8%
2006	1,280,547	124,615	9.7%	89,146	7.0%	49,962	3.9%

Palo Alto City Collections - Material

Collections in libraries by type of material	FY 2016	FY 2015	One-Year Change
Books	248,319	247,088	0.5%
DVDs, CDs, and other media	47,727	51,178	-6.7%
eBooks and eMusic *	145,165	73,793	98.7%
Other formats	20,081	57,401	-65.0%
Total	461,292	429,460	7.4%

Palo Alto City Library Visitor Count

Visitor Count from 2000-2016							
Fiscal Year	Total	Children's		College Terrace		Downtown	
ending June 30	Visits	Visits	%	Visits	%	Visits	%
2016	831,206	108,302	13.0%	49,452	5.9%	62,015	7.5%
2015	810,962	115,851	14.3%	57,558	7.1%	110,275	13.6%
2014	678,181	128,774	19.0%	69,984	10.3%	127,559	18.8%
2013	827,172	130,611	15.8%	60,986	7.4%	103,584	12.5%
2012	843,981	125,826	14.9%	58,961	7.0%	85,061	10.1%
2011	776,994	132,034	17.0%	35,337	4.5%	0	0.0%
2010	851,037	130,215	15.3%	1,160	0.1%	91,923	10.8%
2009	875,847	103,876	11.9%	50,485	5.8%	99,644	11.4%
2008	881,520	71,855	8.2%	55,625	6.3%	86,636	9.8%
2007	882,081	0	0.0%	63,081	7.3%	90,273	10.5%
2006	885,565	57,708	6.5%	59,907	6.8%	83,789	9.5%

Palo Alto Library Program Attendance

Palo Alto Program Attendance FY...						
Fiscal Year	All Programs		Preschool		School Age	
ending June 30	Number	Attendance	Number	Attendance	Number	Attendance
2016	1,452	53,560	673	31,004	191	10,600
2015	1,048	44,892	521	23,346	134	8,250
2014	801	37,971	336	17,547	232	16,500

Palo Alto City Library Information and Circulation Services

Information and circulation services usage	FY 2016	FY 2015	One-Year Change
Reference and research inquiries (excludes direct...	2,620	73,580	-96.4%
Database searches	113,985	54,250	110.1%
LINK+ items borrowed	5,307	6,429	-17.5%
Holds placed in library branches and online	189,762	186,834	1.6%
Library cards issued	8,928	10,763	-17.0%

Palo Alto City Library Checkouts by Type of Material



BOSTON - ANALYZE DATA

OPEN DATA TO OPEN KNOWLEDGE

- Boston – 121 datasets
 - <https://data.boston.gov/>
- Open Data to Open Knowledge
 - Connecting the City's Librarians

ANALYZE BOSTON

DATASETS NEWS TIPS LOG IN

POPULAR DATASETS

Browse popular datasets below and see what other citizens found interesting in the past two weeks.



Property Assessment

294 recent views

PDF CSV



Moving Truck Permits

150 recent views

HTML CSV

NEW OR MODIFIED DATASETS

Browse new or modified datasets below. Click to view details, explore content, or view on a map.



Central Library Electricity Usage

Modified on September 5, 2017

CSV



City Hall Electricity Usage

Modified on September 5, 2017

CSV

SUNNYVALE LIBRARY ONLINE DATABASES

- <https://sunnyvale.ca.gov/community/library/collections/databases.htm>

Sunnyvale Public Library

About the Library My Account Programs and Events Collections and Resources Get Involved

Collections and Resources » Online Databases

Online Databases

These resources are only available with your Sunnyvale Library card. Resources labeled "Library use only" must be used in the library, and a Library card is required when in the building.

A

Alt HealthWatch - Information about complementary and alternative medicine.

American Physical Society Journals - (Library use only) American Physical Society full-text articles from over 400,000 research papers dating back to 1892.

Ancestry.com - (Library use only) Research family history and genealogy.

AtoZdatabases - Reference and marketing database that includes 20 million business profiles and contact information for 200 million residents. Sales leads and employment opportunities.

B

Biography Reference Center - Full-text biographies on figures in history, science, the arts, multicultural and gender studies, business, government and politics.

Business Searching Interface - Company and industry profiles, market research reports and business videos.

Business Source Complete - Full-text, indexing and abstracts dating back to 1886.

C

Computer Source - Information and current trends in technology.

Consumer Health Complete - Information about mainstream, holistic and integrated medicine.

Consumer Reports (periodical resource) - Articles on health, public safety, marketplace economics and the judicial and regulatory actions that affect consumers.

D

Driver Education - Preparation for the California Driver Permit test with free practice tests; includes resources such as the California Driver Handbook and Guide. Disponible en Español.

E

EBSCOhost Audiobook Collection - Download fiction and nonfiction audiobooks on a variety of topics.

EBSCOhost eBook Collection - Business-related and computer-related titles (also available: EBSCOhost Audiobooks).

ERIC (Education Resource Information Center) - Education literature, lesson ideas and resources from the Education Resource Information Center (ERIC).

Explora - Resources for scholarly research, with access to full-text and peer-reviewed journals, periodicals, reports, books, images and video.

Explora for Elementary School - Full-text articles, book chapters, biographies, images, videos and more.

Explora for Middle School - Full-text articles, book chapters, biographies, images, videos and more.

Explora for High School - Full-text articles, book chapters, biographies, images, videos and more.

F

Film and Television Literature Index with Full Text - Articles on film and television.

Foundation Directory Online Professional - (Library use only) In-depth information about grantmakers and their grants.

Foundation Grants to Individuals Online - (Library use only) Financial aid, funding and other support for individuals.

CALIFORNIA PUBLIC LIBRARY STATISTICS PORTAL

• <http://www.countingopinions.com/pireports/report.php?ccd2a953d9cff62e201014ed1f2acd1d&live>


Summary Key Ratios, 2015-16

Collection: Period: **2015-16, (Start 2015-07)** Months: **12**

Location (181) ▲	Visits per Hour Open ▼	Visits per Borrower ▼	Circulation per Hour Open ▼	Circulation per Visit ◆	Circulation per Borrower ◆	Registered Borrowers per Capita ◆	Staff FTE per 1,000 Population ◆	% Operating Expenditures on Staff ◆	% of Operating Expenditures on Collection ◆	Total Operating Expenditures per Visit ◆	Total Operating Expenditures per Open Hour ◆	Total Operating Expenditures per Circulation
STANISLAUS COUNTY FREE LIBRARY	94.18	5.62	72.34	0.77	4.31	0.7651	0.1962	65.96%	7.03%	\$4.16	\$391.59	\$5.41
STOCKTON-SAN JOAQUIN COUNTY PUBLIC LIBRARY	36.96	4.60	62.79	1.70	7.82	0.2846	0.1000	56.79%	8.10%	\$12.50	\$462.00	\$7.33
SUNNYVALE PUBLIC LIBRARY	202.54	5.51	724.73	3.58	19.70	0.8199	0.3304	57.17%	10.35%	\$12.28	\$2,487.36	\$3.43
SUTTER COUNTY LIBRARY	122.21	12.21	74.17	0.61	7.41	0.4329	0.1233	76.77%	3.37%	\$2.55	\$312.22	\$4.21
TEHAMA COUNTY LIBRARY	29.77	5.06	39.99	1.34	6.80	0.2625	0.0782	76.64%	2.07%	\$6.62	\$197.13	\$3.62
THOUSAND OAKS LIBRARY	114.49	4.49	169.57	1.48	6.65	1.0235	0.5025	77.77%	10.47%	\$11.32	\$1,296.60	\$4.74
TORRANCE PUBLIC LIBRARY	43.14	4.66	102.02	2.36	11.02	0.8795	0.4994	75.53%	7.75%	\$12.64	\$545.54	\$5.35
TRINITY COUNTY FREE LIBRARY	12.93	5.12	16.13	1.25	6.39	0.4033	0.2232	73.54%	0.20%	\$11.49	\$148.62	\$9.45
TULARE COUNTY FREE LIBRARY	14.08	4.88	28.36	2.01	9.84	0.1850	0.1313	49.57%	12.49%	\$14.56	\$205.04	\$7.23
TULARE PUBLIC LIBRARY	83.40	6.04	108.54	1.30	7.86	0.4714	0.2440	56.18%	6.83%	\$7.31	\$609.44	\$5.61
Median	64.75	6.92	81.10	1.24	8.62	0.5911	0.2962	69.68%	7.86%	\$8.66	\$537.40	\$6.66
Number	175	176	177	174	179	181	181	176	181	176	180	180
Average	74.18	8.56	94.20	1.34	10.85	0.7407	0.4557	67.69%	8.26%	\$9.11	\$596.89	\$7.64

ACCESS SUNNYVALE – TRANSPARENT SERVICE REQUESTS

- <https://sunnyvale.dynamics365portals.us/service-request-map/>

 **Sunnyvale**

Access Sunnyvale

Home » Service Request Map

Service Request Map

Filter Service Requests

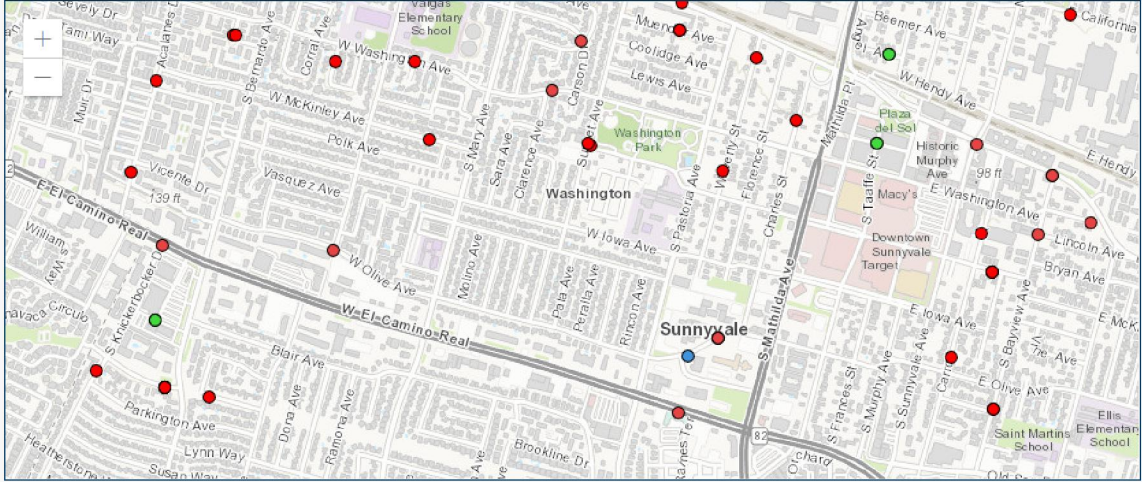
SR Number

DateLast 30 days

StatusAny

TypeAny

ResetMap It!



Service Request Types

Abandoned Vehicle

Parks Maintenance Request

Utility Issue

Neighborhood Complaint

Streets, Trees and Sidewalks Issue

Noise Disturbance

Traffic Issue

SUNNYVALE MAPS AND GIS SERVICES

- <https://sunnyvale.ca.gov/services/map/default.htm>

The screenshot shows the 'Maps and GIS' page of the Sunnyvale website. The page has a light gray background with a blue sidebar on the left. The sidebar contains a search bar at the top, followed by a list of categories: 'Maps & Agendas', 'Current Topics', 'Events', and 'Sunnyvale'. The main content area is titled 'Maps and GIS' and includes a brief explanation of GIS, a disclaimer about the map selection, and three sections of links: 'Dynamic Interactive Maps', 'Printable Maps (PDFs)', and 'Lookup Tools by Residential Address'. A 'Share' button is located in the top right corner of the page.

Maps and GIS

Share

Maps and GIS

Some of our dynamic interactive maps use GIS (Geographic Information Systems), which allows you to search and retrieve data based on a geographic location. The geographic location can be an address, Assessor Parcel Number (APN), street intersection or landmark.

This selection of maps may not be all-inclusive. If you don't see the map you're looking for on this page, you may be able to find it on a page specific to your topic.

Dynamic Interactive Maps

- [New Development Projects](#)
- [Available Commercial Space](#)
- [Flood Zone Viewer](#)
- [Zoning Map](#)
- [Utility Sewer and Storm Block Maps](#)
- [General Plan Map](#)
- [Crime Map](#)
- [Affordable Rental Housing in Sunnyvale](#)
- [Below Market Rate \(BMR\) Home Ownership Sites](#)
- [Parks and Facilities Map](#)

Printable Maps (PDFs)

- [Bike Routes Map](#)
- [Civic Center Map](#)
- [Community Center Map](#)
- [Downtown Parking Map](#)
- [Neighborhood Associations Map](#)

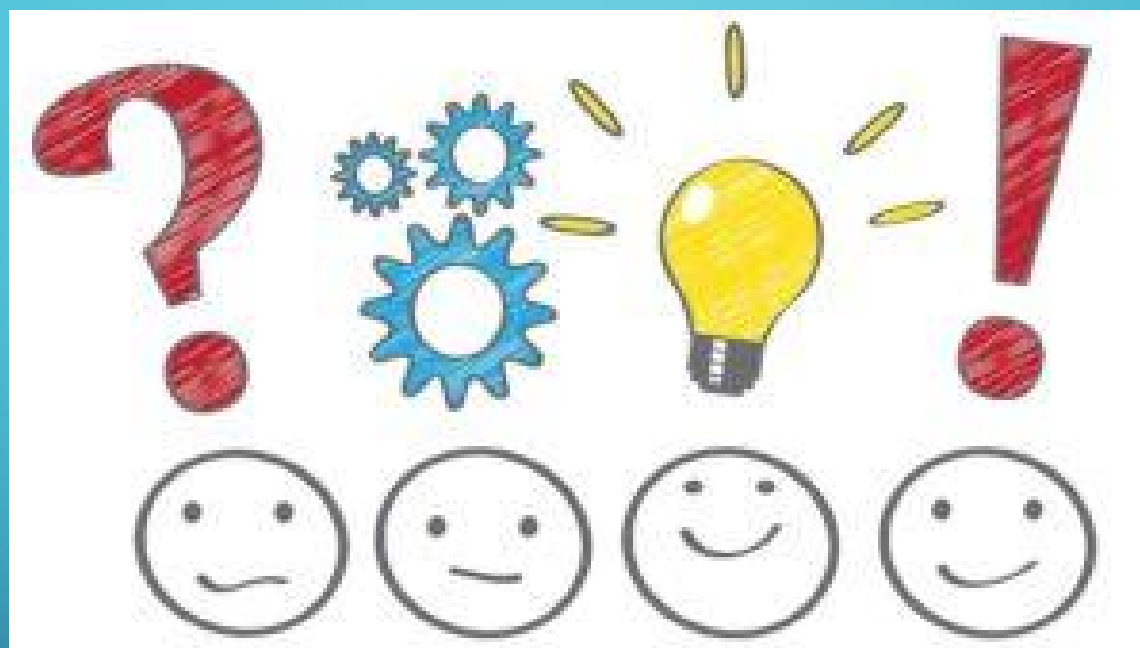
Lookup Tools by Residential Address

- [Curbside Collection Day](#)
- [Street Sweeping Schedule](#)

POTENTIAL LIBRARY INVOLVEMENT IN OPEN DATA

- Host Mobile App Development Sessions
 - Chicago Open City - <http://opencityapps.org/>
- Provide Open Data / Mobile App Development Classes
- Encourage other Agencies / Departments to provide datasets
- Provide User-Centric Experiences
- Assist in Data Sharing Across Agencies
- Assist in Cataloging Datasets, Perfecting Data







City of Sunnyvale

Agenda Item

17-0839

Agenda Date: 9/11/2017

SUBJECT

Approve the Board of Library Trustees Meeting Minutes of August 7, 2017



City of Sunnyvale

Meeting Minutes - Draft

Board of Library Trustees

Monday, August 7, 2017

7:00 PM

Library Program Room, Sunnyvale Public
Library, 665 W. Olive Ave., Sunnyvale, CA
94086

CALL TO ORDER

The meeting was called to order at 7:00 p.m.

ROLL CALL

Present: 4 - Chair Carey Wingyin Lai
Vice Chair Daniel Bremond
Board Member Tina Hwang
Board Member Mark Isaak

Board Member Hwang arrived at 7:13 p.m.
Council Liaison Smith (present)

ORAL COMMUNICATIONS

None.

CONSENT CALENDAR

1 [17-0608](#) Approve the Board of Library Trustees Meeting Minutes of
June 5, 2017

Vice Chair Bremond moved, and Board Member Isaak seconded, approval of the
consent calendar as presented. The motion carried by the following vote:

Yes: 3 - Chair Lai
Vice Chair Bremond
Board Member Isaak

No: 0

Absent: 1 - Board Member Hwang

PUBLIC HEARINGS/GENERAL BUSINESS

2 [17-0610](#) Overview of New Library Website

Director Bojorquez introduced Supervising Librarian Liz Hickok. Supervising Librarian Hickok presented the Board with an overview of the new Library website. She also provided a demonstration on how to navigate the website.

Chair Lai opened the item for public comment, and there being no public comments, closed the item for public comment.

Board Member Isaak moved, and Vice Chair Bremond seconded, approval of the staff report. The motion carried by the following vote:

Yes: 4 - Chair Lai
 Vice Chair Bremond
 Board Member Hwang
 Board Member Isaak

No: 0

3 [17-0634](#) Election of Officers

Nominations were opened for Chair to the Board of Library Trustees.

Vice Chair Bremond nominated Chair Lai who accepted the nomination. No further nominations were presented.

Vote on nomination for Chair:

Yes: 4 - Chair Lai
 Vice Chair Bremond
 Board Member Hwang
 Board Member Isaak

No: 0

Nominations were opened for Vice Chair to the Board of Library Trustees.

Chair Lai nominated Vice Chair Bremond who accepted the nomination. No further nominations were presented.

Vote on nomination for Vice Chair:

Yes: 3 - Chair Lai
Board Member Hwang
Board Member Isaak

No: 0

Abstain: 1 - Vice Chair Bremond

STANDING ITEM: CONSIDERATION OF POTENTIAL STUDY ISSUES

None.

NON-AGENDA ITEMS & COMMENTS

-Board Member Comments

None.

-Staff Comments

Director Bojorquez introduced Council Member Smith who will be serving as the Board's Council Liaison for the next six months.

Director Bojorquez informed the Board of the following:

- The Library purchased an online training program called the Librarian's Guide to Homelessness. This training program is the same training that homeless shelter staff receive, but tailored to fit libraries. In addition, in-person trainings with Ryan Dowd, the creator of the Librarian's Guide to Homelessness, and the author of a soon-to-be-published book by American Library Association will be held the week of August 13.
- At their August 10 meeting, the Sunnyvale School District Board of Education will consider a proposal for a joint use Lakewood Branch Library and Learning Center between the City of Sunnyvale and the Sunnyvale School District. The presentation includes four potential sites to study that have been identified by both parties and that are of mutual interest.
- The B.I.K.E. (Bringing Innovation and Knowledge to Everyone) has had a successful launch. Library staff have taken the B.I.K.E., its bubble machine, and its accompanying adult-sized trike to various community events: Saturday Farmers Market on Murphy Street; to weekly Family Nights at Washington Park; the Sunnyvale train station; Storytime in the Park; Plaza del Sol; Walt's Cycles, and the State of the City celebration.
- In preparation for the solar eclipse on Monday, August 21, the Library will be handing out free eclipse-viewing glasses and eclipse safety information from August

14-20 at the information desk. Viewing glasses will be limited to one pair per family, while supplies last. The eclipse will be streamed live in the Library Program Room. Join us on the Library plaza from 9:30-10:30 a.m. to view the eclipse with others.

INFORMATION ONLY ITEMS

None.

ADJOURNMENT

The meeting was adjourned at 7:41 p.m.



City of Sunnyvale

Agenda Item

17-0841

Agenda Date: 9/11/2017

Overview of Library Summer Reading Program