



# City of Sunnyvale

## Notice and Agenda Arts Commission

---

Wednesday, February 20, 2019

7:00 PM

Neighborhood Room - Recreation Center,  
Sunnyvale Community Center, 550 E.  
Remington Dr., Sunnyvale, CA 94087

---

### **CALL TO ORDER**

### **SALUTE TO THE FLAG**

### **ROLL CALL**

### **ORAL COMMUNICATIONS**

*This category provides an opportunity for members of the public to address the commission on items not listed on the agenda and is limited to 15 minutes (may be extended or continued after the public hearings/general business section of the agenda at the discretion of the Chair) with a maximum of up to three minutes per speaker. Please note the Brown Act (Open Meeting Law) does not allow commissioners to take action on an item not listed on the agenda. If you wish to address the commission, please complete a speaker card and give it to the Recording Secretary. Individuals are limited to one appearance during this section.*

### **CONSENT CALENDAR**

- 1      [19-0150](#)      Approve the Arts Commission Meeting Minutes of January 16, 2019

**Recommendation:** Approve the Arts Commission Minutes of January 16, 2019 as submitted.

### **PUBLIC HEARINGS/GENERAL BUSINESS**

- 2      [19-0201](#)      Approve Art in Private Development Project - Intuitive Surgical/1050 Kifer Road

**Recommendation:** Alternative 1: Approve the artwork as it is proposed.

- 3      [19-0216](#)      Approve Art in Private Development Project - Lane Partners/520 Almanor Ave.

**Recommendation:** Alternative 1: Approve the artwork as it is proposed.

**STANDING ITEM: CONSIDERATION OF POTENTIAL STUDY ISSUES**

**NON-AGENDA ITEMS & COMMENTS**

-Commissioner Comments

-Staff Comments

**ADJOURNMENT**

*Notice to the Public:*

*Any agenda related writings or documents distributed to members of this meeting body regarding any item on this agenda will be made available for public inspection in the originating department or can be accessed through the Office of the City Clerk located at 603 All America Way, Sunnyvale, CA. during normal business hours and at the meeting location on the evening of the commission meeting, pursuant to Government Code §54957.5.*

*Agenda information is available by contacting Community Services Administration at (408) 730-7336. Agendas and associated reports are also available on the City's website at [sunnyvale.ca.gov](http://sunnyvale.ca.gov) or at the Sunnyvale Public Library, 665 W. Olive Ave., Sunnyvale, 72 hours before the meeting.*

*Pursuant to the Americans with Disabilities Act, if you need special assistance in this meeting, please contact Community Services Administration at (408) 730-7336. Notification of 48 hours prior to the meeting will enable the City to make reasonable arrangements to ensure accessibility to this meeting. (28 CFR 35.160 (b) (1))*



# City of Sunnyvale

## Agenda Item

---

**19-0150**

**Agenda Date:** 2/20/2019

---

**SUBJECT**

Approve the Arts Commission Meeting Minutes of January 16, 2019

**RECOMMENDATION**

Approve the Arts Commission Minutes of January 16, 2019 as submitted.



# City of Sunnyvale

## Meeting Minutes - Draft Arts Commission

---

Wednesday, January 16, 2019

7:00 PM

Laurel Room - Senior Center, Sunnyvale  
Community Center, 550 E. Remington Dr.,  
Sunnyvale, CA 94087

---

### **CALL TO ORDER**

Vice Chair Eskridge called the meeting to order at 7 p.m. in the Laurel Room at the Senior Center.

### **SALUTE TO THE FLAG**

Vice Chair Eskridge led the salute to the flag.

### **ROLL CALL**

**Present:** 3 - Vice Chair Dawna Eskridge  
Commissioner Jeremie Gluckman  
Commissioner Sue Serrone  
**Absent:** 2 - Chair Susannah Vaughan  
Commissioner Julie Rogers

Chair Vaughan (excused)  
Commissioner Rogers (excused)  
Council Liaison Larsson (present)

### **PRESENTATION**

[19-0064](#) PRESENTATION - Study Issues Overview

Superintendent of Community Services, Damon Sparacino, gave an overview of the study issue process.

Commissioner Serrone asked if it was helpful for those proposing a topic to provide staff with a detailed concept. Staff responded that that would be helpful. Commissioners also inquired if staff was aware of any recent study issues proposed by the Arts Commission. Staff informed them that they would look back the last five years and get back to them at an upcoming meeting with their findings.

### **ORAL COMMUNICATIONS**



None.

### **CONSENT CALENDAR**

- 1      [19-0065](#)      Approve the Arts Commission Meeting Minutes of December 19, 2018

Commissioner Gluckman moved, and Commissioner Serrone seconded the motion to approve the Arts Commission Minutes of December 19, 2018 as submitted. The motion carried by the following vote:

**Yes:** 3 -    Vice Chair Eskridge  
                 Commissioner Gluckman  
                 Commissioner Serrone

**No:** 0

**Absent:** 2 -    Chair Vaughan  
                 Commissioner Rogers

### **PUBLIC HEARINGS/GENERAL BUSINESS**

- 2      [19-0066](#)      Hands on the Arts Commission Project

Community Services Coordinator, Kristin Dance, gave a presentation on the three (Digital Canvas, Mosaic Tiles, Hope Flags) potential Hands on the Arts (HOTS) projects.

Staff responded to Commissioner's questions regarding the potential number of youth at HOTS, how the Arts Commission would be represented at the event (a booth, etc.) and if direction on which project to proceed with should be provided tonight.

After all, three projects were presented, the Commission agreed to move forward with the Community Hope Flags as the HOTS 2019 project.

Staff noted that they would come up with some potential design concepts for the Flag project and would update the Commission at future meetings.

Vice Chair Eskridge opened the item for public comment, and there being no public comment, closed the item for public comment.

### **STANDING ITEM: CONSIDERATION OF POTENTIAL STUDY ISSUES**

None.

### **NON-AGENDA ITEMS & COMMENTS**

#### **-Commissioner Comments**

Commissioner Gluckman stated that he is excited about the Hands on the Arts project.

#### **-Staff Comments**

Community Services Manager, Trenton Hill, gave an update on the Master Plan for the Public Art (MPPA) project. He noted that the MPPA report is scheduled to be presented at the February meeting or that a special meeting would be scheduled to allow the Commission time to review the MPAA report.

Community Services Coordinator, Kristin Dance, gave a presentation on Art in Private Development (AIPD) and Art in Public Places and responded to the Commissioners questions. She noted that there are 66 pieces of public art throughout the City and that the list of the pieces will be shared with the Commissioners. The Commission is scheduled to review three AIPD projects at their February meeting.

### **ADJOURNMENT**

Vice Chair Eskridge adjourned the meeting at 8:43 p.m.



# City of Sunnyvale

## Agenda Item

---

19-0201

Agenda Date: 2/20/2019

---

### REPORT TO ARTS COMMISSION

#### **SUBJECT**

Approve Art in Private Development Project - Intuitive Surgical/1050 Kifer Road

#### **BACKGROUND**

Under the City's Art in Private Development Ordinance (SMC 19.52), the Intuitive Surgical development at 1050 Kifer Road is required to provide public art. The public art component must be equal in value to one percent of the building permit valuation. The procedure established for reviewing the artwork is as follows:

- 1) Review the artist's background to ensure he/she has the experience and knowledge to design, fabricate and install large-scale artworks;
- 2) Review the artwork itself to determine whether the nature and style of the artwork is appropriate to the site;
- 3) Determine whether the proposed artwork is appropriate in scale for the overall development; and
- 4) Review the location of the artwork for accessibility to the public.

The purpose of this report is to request the Arts Commission review and consider approval of the proposed artwork. Under the Art in Private Development Ordinance, the Arts Commission is authorized to make a final determination of the proposed artwork and the City Council is not scheduled to consider this item. The Commission's decision, however, may be appealed to the City Council by the developer.

#### **EXISTING POLICY**

Sunnyvale Municipal Code 19.52 - Art in Private Development

#### **ENVIRONMENTAL REVIEW**

A mitigated negative declaration was prepared for the underlying project, Intuitive Surgical at 1050 Kifer Road Consistent with SMC Chapter 19.52 (Art in Private Development), art was a required component of the project and project approval was conditional based on the applicant providing visible public art along Kifer Road (condition of approval #BP-12). The Planning Commission adopted the MND and approved the project with the conditions of approval on Dec. 12, 2016.

#### **DISCUSSION**

**Project Location:** The project site is a 21.7-acre lot located at 1050 Kifer Road (Attachment 1 - Vicinity Map). The property is bounded to the north by office/research and development (R&D), to the south by office/R&D and railroad tracks, to the west by office/R&D (recently constructed Intuitive Surgical building at 1020 Kifer Road) and to the east by mixed use/residential (under construction). A

high volume of vehicular traffic on Kifer Road and increasing pedestrian traffic in the area is anticipated as nearby residential and mixed use construction projects are completed.

**Project Description:** The existing project site has four office/R&D buildings totaling 362,679 square feet and surface parking. These buildings are occupied by Intuitive Surgical, a medical robotics R&D company (Attachment 2 - Site Plan).

The current project includes construction of two, four-story buildings totaling 392,465 square feet of office/R&D space and two parking structures. The project also provides publicly-accessible open space, including two landscaped seating areas along Kifer Road and Sonora Court and a 25-foot wide multi-use trail along the site perimeter. Construction of the current project will occur in two phases over the next two to five years. It is anticipated that the proposed artwork will be installed during the first phase in late 2019, and the artwork required for Phase II will be proposed to the Arts Commission at a future date.

**Artwork Location:** The proposed location for the artwork is at ground level, along Kifer Road near the main entrance to the building (Attachment 3 - Site Plan with Art Location). The location was selected for its proximity to the main entrance of the site and building. The location will have the heaviest foot traffic on site which will foster interaction and establish a focal point for the Intuitive Surgical campus. The selected location will be visible to vehicular and pedestrian traffic along Kifer Road.

The proposed location is also in the vicinity of the existing artwork for the adjacent Intuitive Surgical building at 1020 Kifer Road (Attachment 4 - Photograph of Existing Sculpture). That artwork, a stainless-steel sculpture designed by Seattle artist Troy Pillow, was approved by the Arts Commission on June 19, 2013.

Although the two sculptures are close in proximity (within approximately 100 feet), staff has visited the site and determined that the two sculptures will complement each other's style and presence. The two works do not interfere with the public view corridors and the architectural style and materials are consistent, further balancing the nearness of the sculpture sites.

**Selected Artist:** The artistic team selected for this project is San Francisco-based Future Cities Lab (Nataly Gattegno and Jason Kelly Johnson). Their approach to art and design has been described as "experiential, interactive and materially rich". The artistic duo has been creating public art since 2011, completing public art installations in San Francisco, Palo Alto, Albany, Denver and Milan, Italy. (Attachment 5 - Artists' Resume). Upcoming art installations include: St. James Park Levitt Pavilion in San Jose, CA; Sea Beach Line Station, New York, NY; Oakland, CA; North Union Station, Washington DC and San Francisco, CA. Future Cities Lab is also included in pre-selected artist pools for major art programs including: the San Francisco Arts Commission, Alameda County Arts Commission, City of Austin, TX and Oregon Regional Arts & Culture Council.

Images of Future Cities Lab's public commissions can be found at [future-cities-lab.net](http://future-cities-lab.net).

**Artwork Proposal:** For this project, Future Cities Lab has designed an interactive shade canopy entitled "Cosmos" (Attachment 6 - Rendering of Artwork and Attachment 7 - Diagram of Artwork). Standing 22 feet high, the stainless-steel sculpture will have a 33'-9" x 24'-10" (792 square foot) footprint. The sculpture canopy will consist of a combination of smaller folded stainless-steel

“petals” (custom bent by the artists) and perforated stainless-steel “petals” (powder coated blue).

The “petals” will be assembled in a geometric pattern and secured in a frame resembling a funnel cloud (Attachment 8 - Materials & Assembly Diagram). The artists explain their design as “an exploration in translating mathematical principles into physical form. The Fibonacci Sequence informs the specific algorithm underlying the three-dimensional structure and skin of the artwork. While the form of the artwork would be fixed, the play of light, reflection and color would change through the day and season. The site-specific installation invites visitors to experience the interplay of pattern, light, art and science in a way that is both playful and contemplative.”

The canopy is designed to create an open, shaded space that encourages visitors, workers and community members to congregate and view the play of shadow and light. The developer has committed to providing bench seating near the sculpture, although the exact number, design and placement of benches has yet to be determined.

The shadow and light will transform throughout the day and evening, as viewers change vantage points and the natural sunlight changes from dawn to dusk and season to season. The artists also note that “the origami-like surfaces...are meant to inspire spontaneous interactions and playfulness by both adults and children who might enjoy spending time underneath the artwork’s intricate organic structure and kaleidoscopic skin.”

**Lighting Plan:** During the day, the artwork will be lit by sunlight, naturally filtering through the petals to create shade, shadows and colorful patterns on the ground below (Attachment 9 - Rendering of daylight Illumination). From above, the viewer’s vantage point will be focused on the colorful petals of the sculpture canopy, while the ground-level patterns will still be visible (Attachment 10 - Rendering from Above).

At night, the artwork will change as ground level up-lighting will illuminate the underside of the canopy with white light, highlighting the variations of blue and silver petals (Attachment 11 - Rendering of Evening Illumination).

**Maintenance:** The artwork will be assembled to discourage bird landings and roosting on the canopy by using bird spikes and angled “petals”. The angling will also encourage self-cleaning from rain fall, although the sculpture can be power-washed periodically to clean dirt build-up and bird droppings.

### **FISCAL IMPACT**

If approved, the developer will be responsible for design, fabrication and installation costs of the artwork, as well as ongoing maintenance. There is no fiscal impact on the City’s operating budget other than incidental staff time to monitor the project, which is budgeted in the Art in Private Development Program.

The developer anticipates the artwork budget will be equal to or greater than the Art in Private Development requirement (\$451,047), however, if it is not, the developer will be required to contribute the difference to the City’s Public Art Fund. The developer is required to provide backup documents to substantiate all art expenditures.

**PUBLIC CONTACT**

Public contact was made through posting of the Arts Commission agenda on the City's official-notice bulletin board, on the City's website, and the availability of the agenda and report in the Office of the City Clerk.

**ALTERNATIVES**

1. Approve the artwork as it is proposed.
2. Not approve the artwork as it is proposed.

**RECOMMENDATION**

Alternative 1: Approve the artwork as it is proposed.

Staff concludes that the proposal meets the criteria outlined in Sunnyvale Municipal Code, Chapter 19.52.040, standards for Art in Private Development.

Prepared by: Kristin Dance, Community Services Coordinator II

Reviewed by: Trenton Hill, Community Services Manager

Reviewed by: Damon Sparacino, Superintendent of Community Services

Approved by: Cynthia E. Bojorquez, Director, Department of Library and Community Services

**ATTACHMENTS**

1. Vicinity Map
2. Site Plan
3. Site Plan with Artwork Location
4. Photograph of Existing Sculpture
5. Artists' Resume
6. Rendering of Artwork
7. Diagram of Artwork
8. Materials & Assembly Diagram
9. Rendering of Daytime Illumination
10. Rendering from Above
11. Rendering of Evening Illumination

Google Maps 1050 Kifer Rd



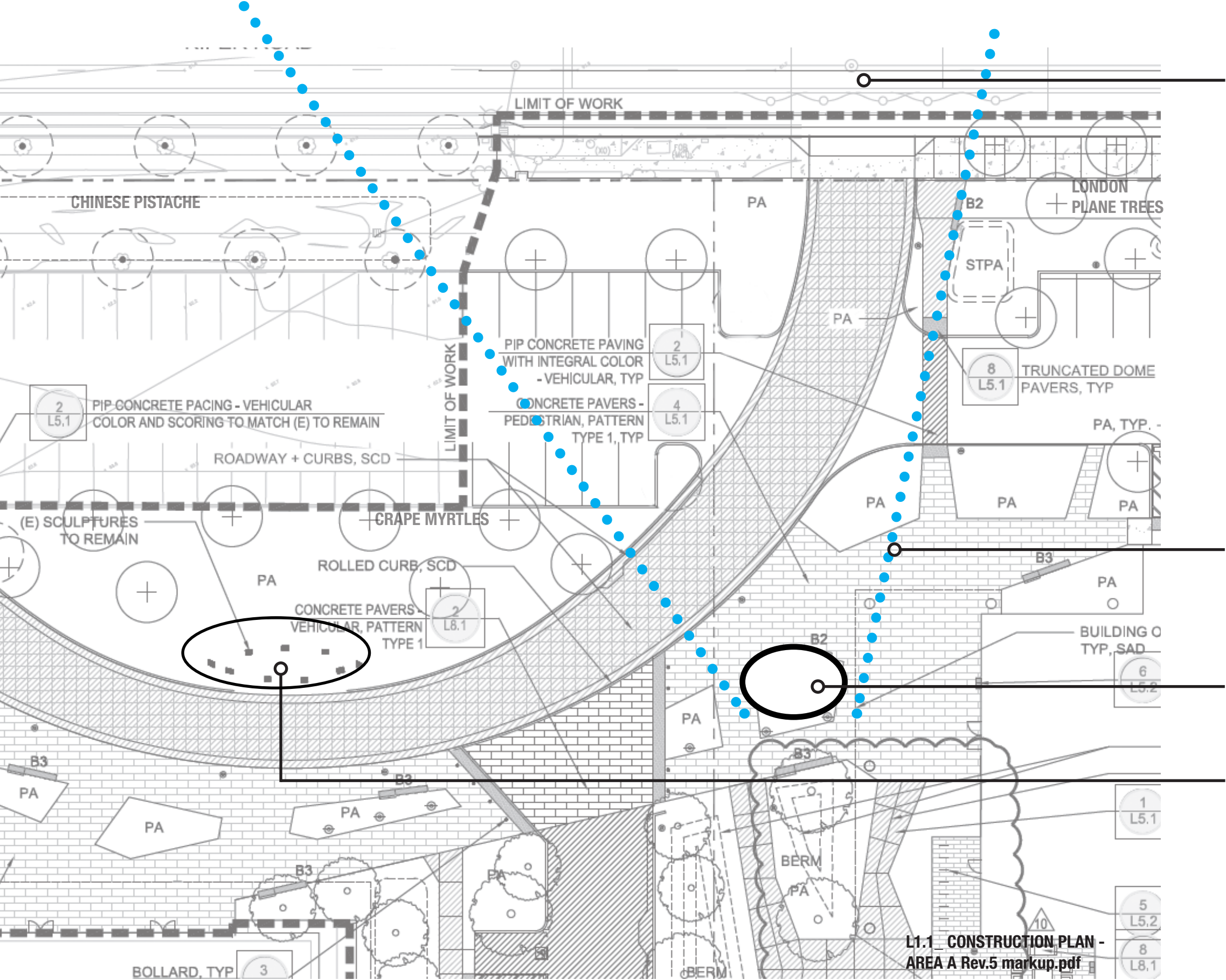
Map data ©2019 Google 500 ft



# Master Site Plan Phase 1 & 2







KIFER ROAD

PRIMARY VIEW CORRIDOR

PROPOSED PUBLIC ARTWORK

EXISTING PUBLIC ARTWORK  
Troy Pillow, Alignment, Polished Stainless Steel, 2013



Troy Pillow, *Alignment*, Polished Stainless Steel, 2013

Andrea Schwartz Gallery, Art Consultant

Photo courtesy of Alfred Leung



# RESUME

---

## FUTURE CITIES LAB

### Nataly Gattegno + Jason Kelly Johnson

2325 3rd St. #229, San Francisco, CA 94107

t: 415.255.4879, c: 434.466.6507, e: nataly@future-cities-lab.net, e: jason@future-cities-lab.net

w: www.future-cities-lab.net

### + Certifications

San Francisco Local Business Enterprise [LBE], Certification Number: CMD111917258, 2016-2019

### + Artist Pools [current]

2017/2018 Prequalified Artist Pool: San Francisco Arts Commission, CA

2017-2020 Artist Registry, Alameda County Arts Commission, CA

2018-2020 National Pre-Qualified Artist Pool, Austin, TX

2016-2019 Art in Public Places Roster: Oregon Regional Arts & Culture Council, OR

### + Education

#### Nataly Gattegno:

2002 Master of Architecture, MArch, Princeton University

2000 Master of Arts, MA, Cambridge University, St Johns College, UK

1998 Bachelor of Arts, BA Honors, Cambridge University, St Johns College, UK

#### Jason Kelly Johnson:

2001 Master of Architecture, MArch, Princeton University

1995 Bachelor of Sciences, BSc, University of Virginia

### + Forthcoming Public Art Installations

2020 St. James Park Levitt Pavilion, San Jose, CA [Budget: 15mil USD]

2019 Lightstreams, MTA Arts + Design, Sea Beach Line Station Public Art, New York, NY [Budget: 350,000 USD]

2019 Lightcloud, I-880 Underpass, Oakland, CA [Budget: 310,000 USD]

2018 Lightweave: Interactive Public Art, North Union Station Underpass, Washington DC [Budget: 500,000 USD]

2018 Graphic Crosswalks, Yerba Buena Neighborhood, San Francisco, CA [non-profit]

### + Recent Public Art Commissions

2018 Murmur Wall, Milan Design Week, Milan, Italy

2017 Waveform, Metropolitan State University of Denver, Aerospace & Engineering Sciences Denver, CO

2017 Anemone: Sculptural Shade Canopy, Albany, CA

2016 Chronoscope 1, Soundwave Art Festival, Fort Mason, San Francisco, CA

2017/15 Murmur Wall: Interactive Public Art Installation, Palo Alto City Hall, Palo Alto, CA; YBCA, San Francisco, CA

2015 Data Lanterns: Interactive Public Art Installation, Market Street Prototyping Festival, San Francisco, CA

2014 Lightswarm: Interactive Façade Installation, Yerba Buena Center for the Arts, San Francisco, CA

2014 Datasprayer, Swiss Pavilion, Venice Biennale, Italy

2012 Datagrove, ZERO1 Biennial, San Jose, CA and artMRKT, Fort Mason, San Francisco, CA

2012 Hydramax, San Francisco Museum of Modern Art, San Francisco, CA

2011 Trilux Pavilion, Museum of Craft and Design, Hayes Valley, San Francisco, CA

### + Recent Private Art Commissions

2016 4480 Pixels In Space, Survey Monkey, San Mateo, CA

2015 Bitstream, Bittly, New York, NY

---

#### + Recent Group Exhibitions

- 2018 Venice Biennale, Data and Matter Exhibition, European Cultural Centre, Venice, Italy
- 2017 Architectural Pavilions: Experiments and Artifacts, Museum of Craft and Design, San Francisco, CA, Curator: Mariah Nielson
- 2017 Luminairy, Art, Tech + Music Festival, San Francisco, CA
- 2015 Blueprint, Storefront for Art + Architecture, New York, NY, Curator: Sebastiaan Bremer & SO-IL
- 2015 Data Clay, Museum of Craft and Design, San Francisco, CA, Curators: Joshua G. Stein & Del Harrow

#### + Fellowships / Awards

- 2016 SXSW Eco Place By Design Interactive Art Award Finalist for Lightswarm
- 2016 Americans for the Arts 'Top 50 Public Artworks' for Murmur Wall
- 2013 Americans for the Arts 'Top 50 Public Artworks' for Datagrove
- 2011 New York Prize, The Architectural League of New York
- 2010 Van Alen NY Prize Fellowship, Van Alen Institute, New York

#### + Select Authored Publications

- 2018 Nataly Gattegno + Jason Johnson, From Ambient Environments to Sentient Spaces, in IATR, ed. Marinic, Routledge.
- 2016 Nataly Gattegno + Jason Johnson, Foreword: Towards a Robotic Ecology, in *Responsive Landscapes*, ed. Bradley Cantrell + Justine Holzman, Routledge.
- 2015 Nataly Gattegno + Jason Johnson, *The Hydramax Trilogy*, in *Architectural Design*, AD 2050, Wiley Press.
- 2015 Jason Johnson, *Creative Architecture Machines*, in *Paradigms in Computing*, ed. by Gerber + Ibanez.
- 2014 Nataly Gattegno + Jason Johnson, *Interview*, in *eVolo: Digital Parametric Architecture*, ed. Carlo Aiello.
- 2012 Nataly Gattegno + Jason Johnson, *Live Models*, in *Dirt*, Viabooks, eds. Furjan, Born, Jencks, MIT Press.

#### + Select Publication of Design Work

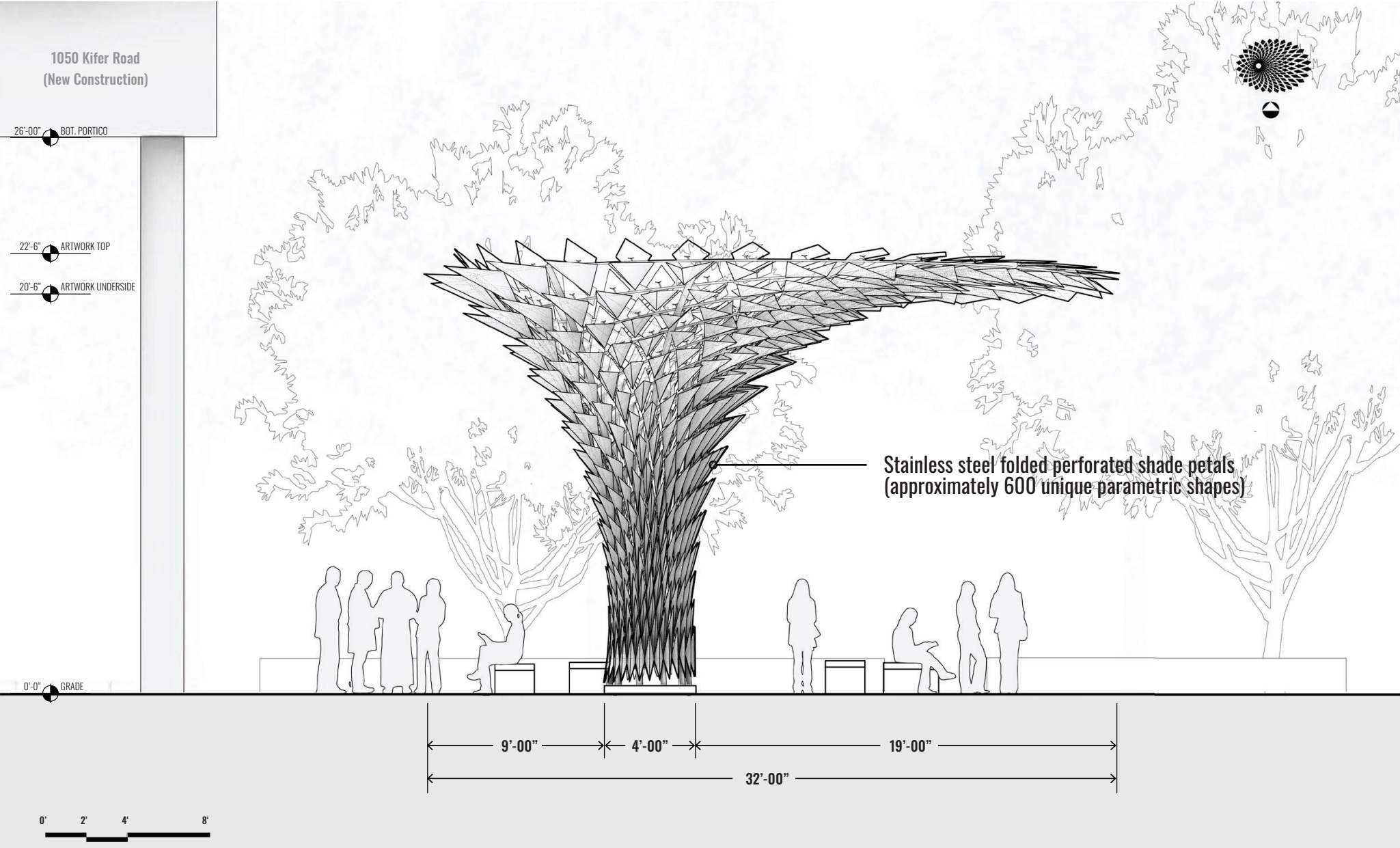
- 2017 Karen M'Closkey + Keith VanDerSys, *Dynamic Patterns: Visualizing Landscape in a Digital Age*, Routledge.
- 2016 Ila Berman + Douglas Burnham, *Expanded Field: Installation Architecture Beyond Art*, Applied Research & Design.
- 2016 Jill Desimini + Charles Waldheim, *Cartographic Grounds: Projecting the Landscape Imaginary*, PAppress.
- 2016 Michael Fox, *Interactive Architecture: Adaptive World*, Princeton Architectural Press.
- 2016 Bradley Cantrell + Justine Holzman, *Responsive Landscapes*, Routledge.
- 2015 *The Journal of Performance and Art*, Issue 109, MIT Press.
- 2014 *ROOM: Inside Contemporary Interiors*, Phaidon.
- 2014 *Installation Art Now*, Sandu Publishing, Ginko Press.

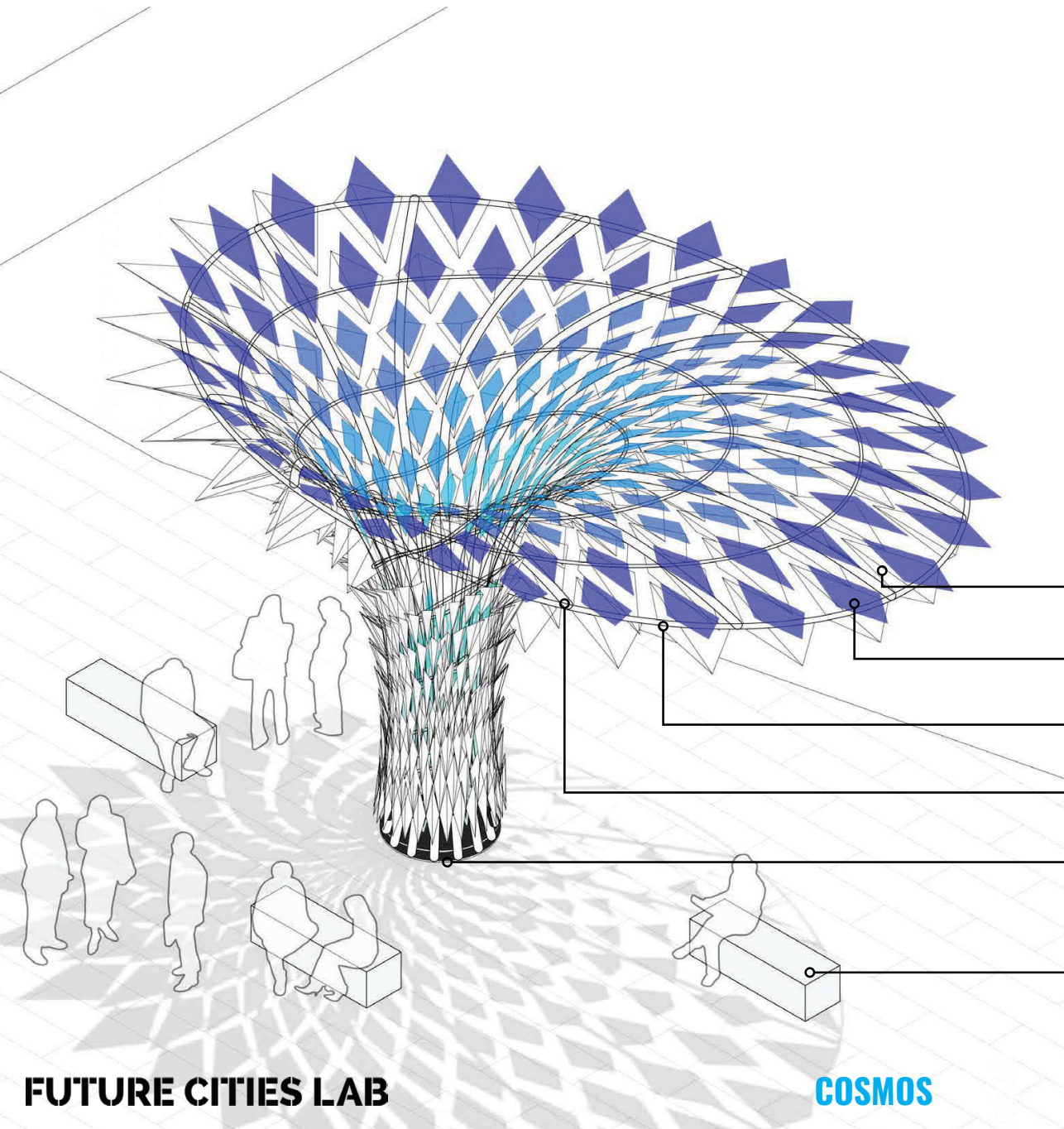
#### + Select Press, Interviews, Commentary

- 2017 *Can You Design A City To Feel?* Podcast, *Forbes*.
- 2017 *The Invisible Network That Makes Cities Work*, *CityLab*, *The Atlantic*.
- 2016 *Lights in the sky: Inside San Francisco's illuminated art scene*, *Engadget*.
- 2015 *Illuminate SF*, *SF Travel*.
- 2015 *A Light Sculpture Is Harvesting San Francisco's Secrets*, *The Creators Project*.
- 2015 *Writers, Scientists, and Climate Experts Discuss How to Save the World from Climate Change*, *VICE*.
- 2014 *Best of #Light*, *Domus*.









## MATERIALS & ASSEMBLY

**Shade Petals** - 16ga 304 stainless steel folded sheets, laser cut and custom bent by artist, bolted

**Inner Diffusers** - 16ga perforated 304 stainless steel, powder coated blue tones, both sides and bolted

**Horizontal Rings** - 1" diameter x 1/16" thick wall 304 stainless steel tube - cnc bent, or galvanized

**Primary Arches** - 4" diameter x 1/4" thick wall 304 stainless steel tube - cnc bent, or galvanized

**Base Plate** - 1" thick 304 stainless steel (or galvanized) with welded solid rod steel rod with welded connection to arches; anchor bolts to concrete spread footings below; access opening for routine maintenance and inspection

**3 Benches** (Type B2 - 8' Backless Benches to match garden benches) \*suggested final location, type and quantity to be coordinated w. RHAA Landscape Architects and purchased by Owner.





**FUTURE CITIES LAB**

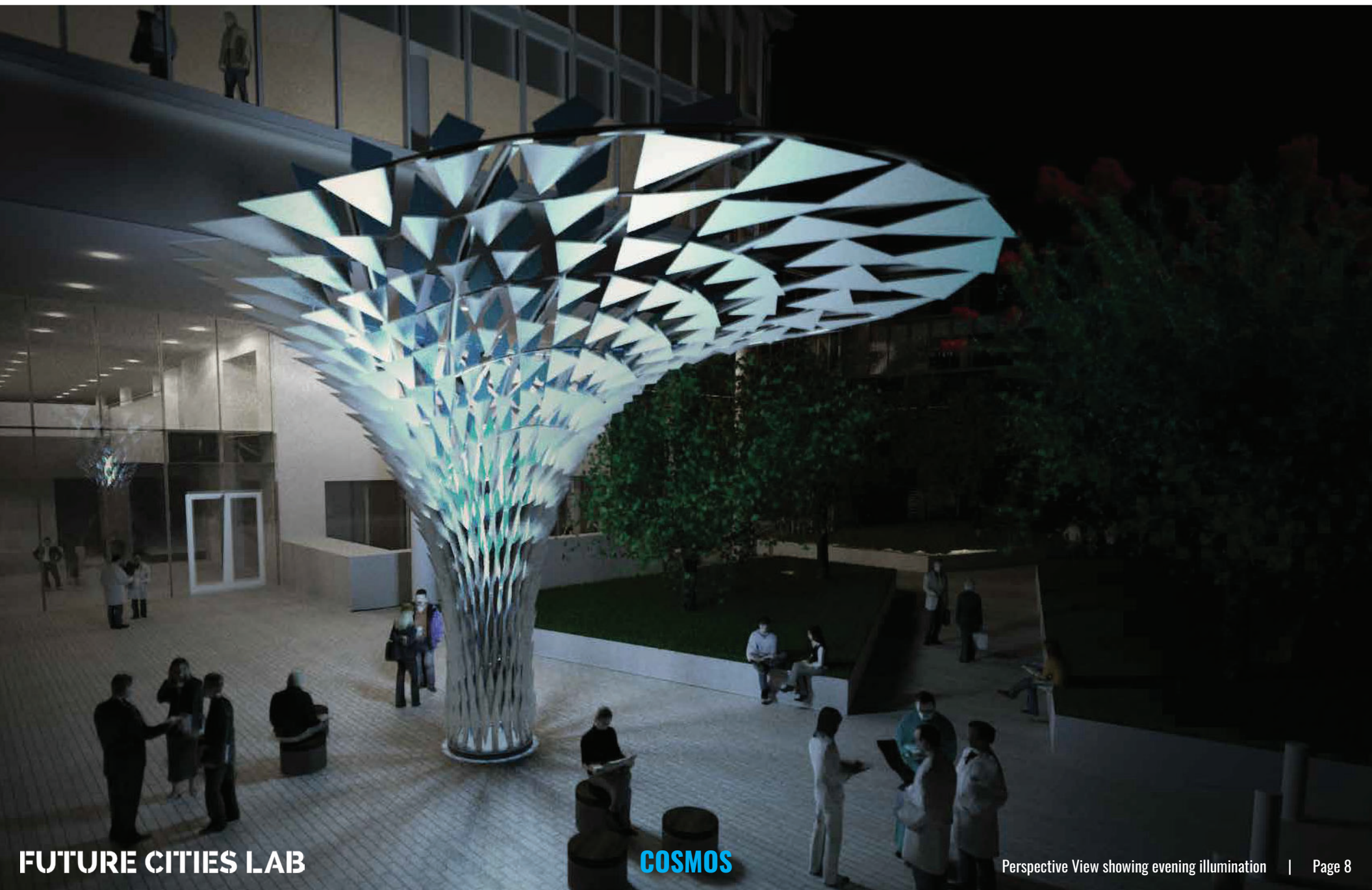
**COSMOS**

Perspective View with mid-day shadows | Page 4









**FUTURE CITIES LAB**

**COSMOS**

Perspective View showing evening illumination | Page 8



# City of Sunnyvale

## Agenda Item

---

19-0216

Agenda Date: 2/20/2019

---

### REPORT TO ARTS COMMISSION

#### **SUBJECT**

Approve Art in Private Development Project - Lane Partners/520 Almanor Ave.

#### **BACKGROUND**

Under the City's Art in Private Development Ordinance (SMC 19.52), the development at 520 Almanor Ave. is required to provide public art. The public art component must be equal in value to one percent of the building permit valuation. The procedure established for reviewing the artwork is as follows:

- 1) Review the artist's background to ensure he/she has the experience and knowledge to design, fabricate and install large-scale artworks;
- 2) Review the artwork itself to determine whether the nature and style of the artwork is appropriate to the site;
- 3) Determine whether the proposed artwork is appropriate in scale for the overall development; and
- 4) Review the location of the artwork for accessibility to the public.

The purpose of this report is to request the Arts Commission review and consider approval of the proposed artwork. Under the Art in Private Development Ordinance, the Arts Commission is authorized to make a final determination of the proposed artwork and the City Council is not scheduled to consider this item. The Commission's decision, however, may be appealed to the City Council by the developer.

#### **EXISTING POLICY**

Sunnyvale Municipal Code 19.52 - Art in Private Development

#### **ENVIRONMENTAL REVIEW**

A mitigated negative declaration (MND) was prepared for the underlying project at 520 Almanor Ave. Consistent with SMC Chapter 19.52 (Art in Private Development), art was a required component of the project and project approval was specifically conditioned upon the applicant providing visible public art at the site (condition of approval #BP-7). The Planning Commission adopted the MND and approved the project with the conditions of approval on March 6, 2017.

#### **DISCUSSION**

**Project Location:** This project is a 4.4-acre site located at 520 Almanor Ave. (Attachment 1 - Vicinity Map). The site is bounded by Vaqueros Avenue to the west and by Almanor Avenue to the north and east. Surrounding land uses include industrial developments to the north and west, and hotel/motels to the south and east.

Staff anticipates an increase in both vehicular and pedestrian traffic, as the Peery Park area continues to expand and new developments are completed nearby.

**Project Description:** The project includes demolition of an existing 81,474-square foot building and the construction of a four-story office building, seven-level parking structure (with two levels underground and one at roof level) and up to 4,000 square feet of retail/commercial use. The site can be accessed from both Vaqueros Avenue and Almanor Avenue (Attachment 2 - Site Plan).

**Artwork Location:** The proposed location for the artwork is the parking garage facade above ground level (Attachment 2 - Site Plan). The artwork will be visible from two of the frontages to the property, Almanor Avenue and Vaqueros Avenue, as well as from the main entrance to the property and the building.

**Selected Artist:** The artist chosen for this project is Napa sculptor Gordon Huether (Attachment 3 - Artist's Resume.). Mr. Huether designed two public art pieces in 2002 for the Sunnyvale Senior Center, "Tree of Life", a water-cut steel mandala with dichroic glass located near the main entrance and "Forest", an etched glass window in the main hallway.

Mr. Huether has artworks located throughout the Bay Area including: San Jose, San Mateo, Brentwood, Stockton, Sacramento, Napa and Dublin. Images of Mr. Huether's artwork can be found at [gordonhuether.com](http://gordonhuether.com).

**Artwork Proposal:** For this project, the artist has designed an 8,840-square foot, multi-panel metal screen (Attachment 4 - Elevation Rendering). The screen will wrap around all four sides of the parking garage at the third-floor elevation. Each panel will be waterjet-cut in a repetitive pattern of Redwood trees (Attachment 5 - Design Detail Rendering), which are native to the Peery Park area. The panels will be powder coated white, which combined with the cut-out tree pattern, will result in a continuous black and white mural that stands 10 to 15 feet high on the facade.

**Lighting Plan:** The artwork will be back lit from above, allowing the light to come through the dark areas of the screen and causing the white opaque areas to glow. Additionally, there will be ambient light on the premises.

**Maintenance:** The artwork can be easily maintained through periodic power washing.

### **FISCAL IMPACT**

If approved, the developer will be responsible for design, fabrication and installation costs of the artwork, as well as ongoing maintenance. There is no fiscal impact on the City's operating budget other than incidental staff time to monitor the project, which is budgeted in the Art in Private Development Program.

The developer anticipates the artwork budget will be equal to or greater than the Art in Private Development requirement (\$257,678), however, if it is not, the developer will be required to contribute the difference to the City's Public Art Fund. The developer is required to provide backup documents to substantiate all art expenditures.

**PUBLIC CONTACT**

Public contact was made through posting of the Arts Commission agenda on the City's official-notice bulletin board, on the City's website, and the availability of the agenda and report in the Office of the City Clerk.

**ALTERNATIVES**

1. Approve the artwork as it is proposed.
2. Not approve the artwork as it is proposed.

**RECOMMENDATION**

Alternative 1: Approve the artwork as it is proposed.

Staff concludes that the proposal meets the criteria outlined in Sunnyvale Municipal Code, Chapter 19.52.040, standards for Art in Private Development.

Prepared by: Kristin Dance, Community Services Coordinator

Reviewed by: Trenton Hill, Community Services Manager

Reviewed by: Damon Sparacino, Superintendent of Community Services

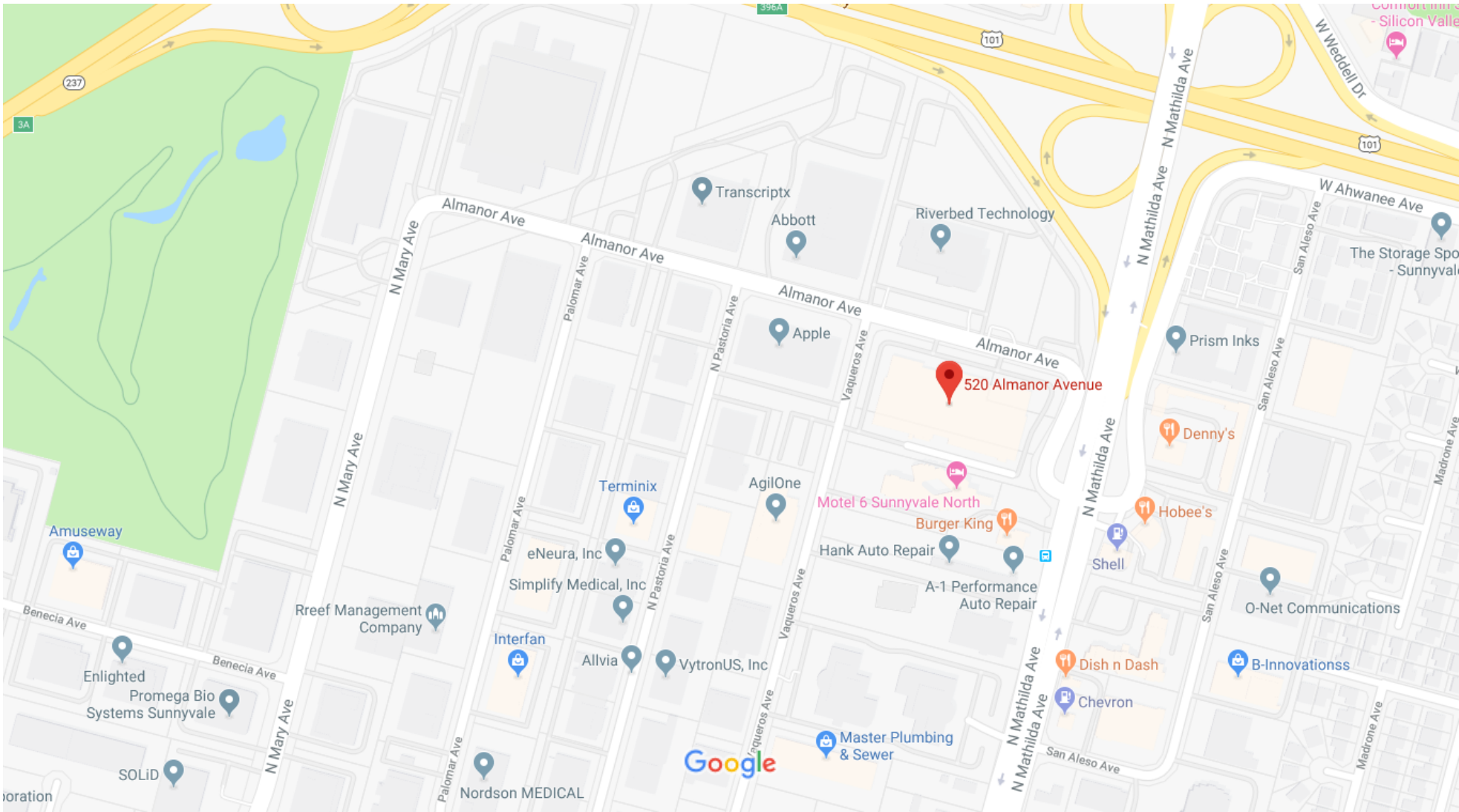
Approved by: Cynthia E. Bojorquez, Director, Department of Library and Community Services

**ATTACHMENTS**

1. Vicinity Map
2. Site Plan
3. Artist's Resume
4. Elevation Rendering
5. Design Detail Rendering



Google Maps 520 Almanor Ave



522 ALMANOR  
SUNNYVALE, CA



Revision Schedule		
Revision Number	Revision Date	Revision Description
0	01.19.18	PERMIT SET
1G	05.11.18	RESUBMITTAL #G1

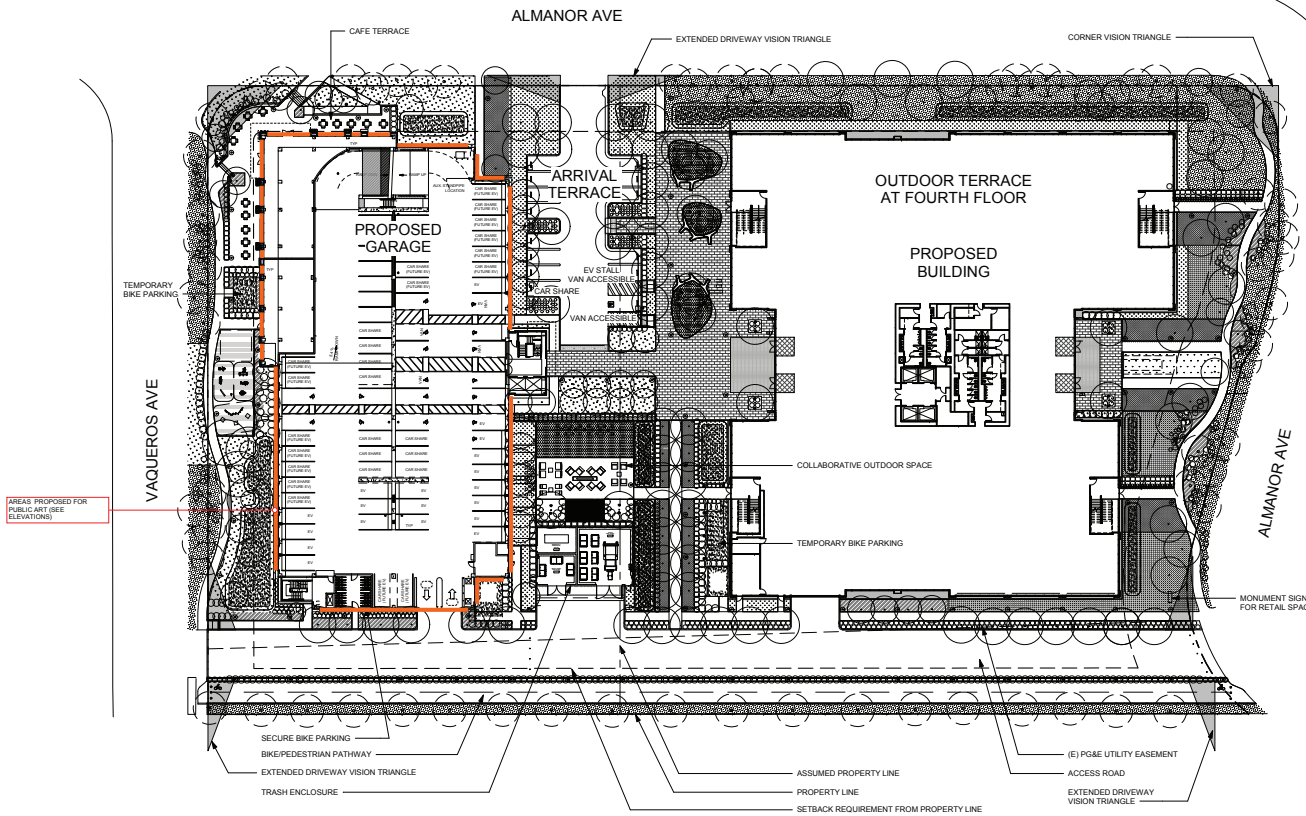
PROJECT NUMBER  
1508.00

SHEET TITLE  
PROPOSED SITE PLAN

SCALE  
1/32" = 1'-0"

SHEET NUMBER

G-A1.01



Parking Schedule		
Type	Required	Level
Motorcycle Stall	89	B2 Level
Standard Stall	866	B2 Level
B2 Level: 105		
Motorcycle Stall	1	B1 Level
Standard Stall	86	B1 Level
B1 Level: 97		
Accessible Stall - Van	1	1st Floor
Carshare Stall	1	1st Floor
EV Stall - Van Accessible	1	1st Floor
Standard Stall	11	1st Floor
1st Floor: 14		
Accessible Stall - Standard	11	P1 Level
Accessible Stall - Van	3	P1 Level
Carshare Stall	13	P1 Level
Carshare/Future EV Stall	17	P1 Level
EV Stall - Accessible	1	P1 Level
EV Stall - Ambulatory	1	P1 Level
EV Stall - Standard	16	P1 Level
EV Stall - Van Accessible	1	P1 Level
Standard Stall	8	P1 Level
P1 Level: 71		
Carshare/Future EV Stall	3	P2 Level
Motorcycle Stall	3	P2 Level
Standard Stall	81	P2 Level
P2 Level: 87		
Standard Stall	89	P3 Level
P3 Level: 89		
Motorcycle Stall	8	P4 Level
Standard Stall	88	P4 Level
P4 Level: 106		
Motorcycle Stall	6	P5 Level
Standard Stall	102	P5 Level
P5 Level: 108		
Grand total:	687	

FOR REFERENCE ONLY-SEE SEPARATE OFFICE BUILDING/SITE PERMIT #20180999

# gordon huether | résumé

## SELECTED COMMISSIONS

- 2018 Dublin Public Safety Complex Memorial Sculpture  
Commissioned by: The City of Dublin, Dublin, CA  
Landmark Public Art Installation, Vista Collina Resort, Napa, CA  
Commissioned by Vista Collina Resort | The Meritage Resort and Spa
- 2017 *All In*, Allen Reeves Football Complex, University Athletic Precinct, Clemson, SC  
Commissioned by: Clemson University  
Happy Valley Road & 83rd Street, Peoria, AZ  
Commissioned by: Peoria Arts Commission  
*Confluence*, Grand Forks Transportation Corridor Gateway  
Commissioned by: City of Grand Forks, ND  
San Jose Police Department "End of Watch" Memorial, San Jose, CA  
Commissioned by: City of San Jose, CA  
*Acero Picado*, Mariposa Plaza, Fresno, CA  
Commissioned by: City of Fresno, CA  
*Trees of Life*, BioMarin Pharmaceutical Inc., Headquarters, San Rafael, CA  
Commissioned by: BioMarin Pharmaceutical Inc.  
*Canyon Light*, Southern Utah University School of Business, Cedar City, UT  
Commissioned by: Utah Division of Arts and Museums  
*Shoal + Shimmer*, Point Defiance Zoo + Aquarium, Tacoma, WA  
Commissioned by: Metro Parks Tacoma Public Art Program  
*Cloud Fountain*, Civic Center, City of Elk Grove, CA  
Commissioned by: City of Elk Grove, CA
- 2016 *Words We Live By*, Salt Lake County District Attorney's Office Building, Salt Lake City, UT  
Commissioned by: Salt Lake County  
*Waves*, Redondo Beach Performing Arts Center, Redondo Beach, CA  
Commissioned by: Redondo Beach Art in Public Places  
*Fantasia Anthropoda*, Palm Beach County Sheriff's Office, West Palm Beach, FL  
Commissioned by: Palm Beach County Art in Public Places  
*Roundabout the Mountain*, Vail I-70 Highway Exit Roundabout, Vail, CO  
Commissioned by: Vail Art in Public Places  
*Velocity*, Ashland Theater Corridor, Ashland, OR  
Commissioned by: Ashland Public Art Commission  
*Over the Moon*, CityLine Gateway, Richardson, TX  
Commissioned by: CityLine  
*Aperture*, Sand Hill, Palo Alto, CA  
Commissioned by: Palo Alto Public Art Commission  
*Is That Bob + Margrit and Fork*, The Culinary Institute of America at Copia, Napa, CA  
Commissioned by: The Culinary Institute of America  
*Spectrum*, Dadeland Roundabout, Boca Raton, FL  
Commissioned by: Duncan Hillsley Capital  
*Salud*, OLE Health, Napa, CA  
Commissioned by: OLE Health
- 2015 Bank of the West, Palo Alto, CA  
Commissioned by: Bank of the West  
*The Basket*, Archer Hotel, Napa, CA  
Commissioned by: LodgeWorks  
*The Canyon*, Salt Lake City International Airport, Salt Lake City, UT



Commissioned by: Salt Lake City Department of Aviation  
*Sunrise + Sunset*, Fort Lauderdale-Hollywood International Airport - Terminal 1, Fort Lauderdale, FL  
 Commissioned by: Broward County Public Art Program  
*On the Move 1 + 2*, Iliff Rapid Transit Station and Parking Structure, Aurora, CO  
 Commissioned by: City of Aurora, Art in Public Places  
*In Honor of the Fallen*, Memorial Sculpture, Oklahoma City Police Headquarters, Oklahoma City, OK  
 Commissioned by: Oklahoma City Office of Arts & Cultural Affairs  
 2014 *Applique de Parete*, 535 Mission Street, San Francisco, CA  
 Commissioned by: Boston Properties  
*9/11 Memorial Sculpture*, American Canyon, CA  
 Commissioned by: American Canyon Fire Department  
*Blossoms*, Woodbury Condominiums, Lafayette, CA  
 Commissioned by: The New Homes Corporation; City of Lafayette  
 Eden Medical Center, Castro Valley, CA  
 Commissioned by: Andrea Schwartz Gallery  
*Hoops*, Oregon State University - Basketball Practice Facility, Corvallis, OR  
 Commissioned by: Oregon State Arts Commission  
*Lichtregen*, Archer Hotel, New York, NY  
 Commissioned by: LodgeWorks  
 Millstone Rehabilitation Project, Yountville, CA  
 Commissioned by: Town of Yountville  
*The Nature of Life*, Martinez Courthouse, Martinez, CA  
 Commissioned by: Judicial Council of California, Arts in the Courthouse Program  
 Red Bluff Courthouse, Sacramento, CA  
 Commissioned by: State of California; LPAS Architecture + Design  
 Rockland County Office Building, New City, NY  
 Commissioned by: Rockland County Art in Public Places  
*Spirale*, Provenance & Hewitt Vineyards, Rutherford, CA  
 Commissioned by: Diageo Chateau & Estate Wine  
 Carey Interfaith Chapel, Stamford Hospital, Stamford, CT  
 Commissioned by: Stamford Hospital  
 Studio M Fine Wines, Napa, CA  
 Commissioned by: Studio M Fine Wines LLC  
*Tarantula + Poppy Jasper*, 4th Street Parking Garage, Morgan Hill, CA  
 Commissioned by: City of Morgan Hill; F+H Construction  
*Twelve Tribes of Israel*, Congregation Beth Shalom, Napa, CA  
 Commissioned by: Congregation Beth Shalom  
 Wards Corner Gateway, Norfolk, VA  
 Commissioned by: City of Norfolk  
 2013 Hatcher Road Streetscape Project, Phoenix, AZ  
 Commissioned by: City of Phoenix, AZ  
 Historic Napa Mill Gateway, Napa, CA  
 Commissioned by: CDI Companies  
 Pearl Street Plaza, Bethesda, MD  
 Commissioned by: M Contemporary LLC; Atlantic Arts  
*Portal*, University of Toledo Roundabout, Toledo, OH  
 Commissioned by: University of Toledo  
 2012 *A-Round Oakland*, BART Oakland Coliseum Connector Station, Oakland, CA  
 Commissioned by: Bay Area Rapid Transit Authority  
*Aureole*, Centennial Plaza Sculpture, Peoria, AZ

Commissioned by: City of Peoria  
Grand Hyatt, San Francisco, CA  
Commissioned by: Hyatt Hotels Corporation; CCS Architects  
*High Wire Travelers*, Raleigh-Durham International Airport, Raleigh, NC  
Commissioned by: Raleigh-Durham International Airport  
*Biomorphic*, Henry Belmon Research Center, Oklahoma State University, Stillwater, OK  
Commissioned by: Oklahoma Art in Public Places  
Parish Church St. Laurentius, Bobenheim-Roxheim, Germany  
Commissioned by: Bistum Speyer; Episcopalian Building Authority  
*Tree of Life*, Congregational Church of San Mateo, San Mateo, CA  
Commissioned by: Congregational Church of San Mateo  
2011 *A is for Allen*, Exchange Parkway Median Enhancement, Allen, TX  
Commissioned by: City of Allen  
Century Napa Valley Cineplex, Cinemark, Napa, CA  
Commissioned by: Peter A and Vernice H. Gasser Foundation, Inc.  
St. John the Baptist Catholic Church, Napa, CA  
Commissioned by: St. John the Baptist Catholic Church  
University Health System - Medical Center Campus, San Antonio, TX  
Commissioned by: Bexar County Hospital District  
2010 *TRAX*, Salt Lake City International Airport - TRAX Station, Salt Lake City, UT  
Commissioned by: Salt Lake City; Utah Transit Authority  
*Desert Light*, Sun Tran Bus Storage & Maintenance Facility, Tucson, AZ  
Commissioned by: Tucson Pima Arts Council  
Houston Police Department, Midwest Police Station, Houston, TX  
Commissioned by: Houston Arts Alliance; City of Houston  
Kansas City Police Department - South Patrol Station, Kansas City, MO  
Commissioned by: Kansas City  
Millcreek Community Center, Salt Lake County, UT  
Commissioned by: Salt Lake County  
Temple Beth Elohim, Wellesley, MA  
Commissioned by: Temple Beth Elohim  
2009 *9/11 Memorial*, Napa, CA  
Commissioned by: City of Napa  
*Globussphäre*, Loßburg, Germany  
Commissioned by: Arburg GmbH & Co. KG  
Lady Bird Mural, LBJ Presidential Library, Austin, TX  
Commissioned by: LBJ Presidential Library  
LBJ School of Public Affairs, Austin, TX  
Commissioned by: University of Texas at Austin  
*Pixel Care and Light Forest*, El Camino Hospital, Mountain View, CA  
Commissioned by: El Camino Hospital, Mountain View, CA  
*Rostrum*, Miramar Town Center, White Rock, BC, Canada  
Commissioned by: City of White Rock, BOSA Properties  
*Silver Twist*, 2300 Empire Center, Burbank, CA  
Commissioned by: WH Empire Center, Chicago, IL  
2008 Jack London Square, Oakland, CA  
Commissioned by: City of Oakland; Jack London Square Partners  
Lafayette-Orinda Presbyterian Church, Lafayette, CA  
Commissioned by: Lafayette-Orinda Presbyterian Church; HKIT Architects  
Lot 5 Project, Chapel Hill, NC

Commissioned by: Town of Chapel Hill  
 Napa Fifth Street Parking Garage, Napa, CA  
 Commissioned by: City of Napa  
*O Wave*, Ovation Condominiums, St. Petersburg, FL  
 Commissioned by: JMC Communities  
*Red Eye*, East Village Parking Facility, Kansas City, MO  
 Commissioned by: Kansas City Municipal Art Commission  
*Super Space*, Self Storage Facility, Sunnyvale, CA  
 Commissioned by: Highridge Partners, Inc.

2007  
*Desert Mosaic*, Tucson Justice Court, Municipal Court Complex, Tucson, AZ  
 Commissioned by: Tucson Pima Arts Council  
 Eisenhower Medical Center, Ranch Mirage, CA  
 Commissioned by: Jain Malkin Inc.  
*Gotta Go*, Jacksonville International Airport, Jacksonville, FL  
 Awarded by: Jacksonville International Airport Arts Commission  
*Mountain Range and River of Light*, John Muir Medical Center, Walnut Creek, CA  
 Commissioned by: John Muir Health Foundation; City of Walnut Creek  
 Petaluma Tower, Petaluma, CA  
 Commissioned by: City of Petaluma  
 Richmond Civic Center, Richmond, CA  
 Commissioned by: City of Richmond  
 Texas Tech University - School of Law, Lubbock, TX  
 Commissioned by: Texas Tech University

2006  
 The Bridge North Texas | Homeless Assistance Center, Dallas, TX  
 Commissioned by: Dallas County; Overland Partners  
 Marsh Creek Bridge, Brentwood, CA  
 Commissioned by: City of Brentwood  
 The Collection, Burbank, CA  
 Commissioned by: City of Burbank; Champion Development  
 The Rock, St. Helena, CA  
 Commissioned by: St. Helena Castle Investments  
 Tallwood Venture Capital Building, Palo Alto, CA  
 Commissioned by: Tallwood Venture Capital  
*Vessel and Waves*, Sacramento Regional County Sanitation District, Sacramento, CA  
 Commissioned by: Sacramento Metropolitan Arts Commission

2005  
 Duty Free Shop, Guam  
 Commissioned by: Duty Free Shop; Art Source  
 Gasser Building, Napa, CA  
 Commissioned by: Peter A and Vernice H. Gasser Foundation, Inc.  
*Go, Go, Go*, Foothills Recreation & Aquatics Center, Glendale, AZ  
 Commissioned by: Glendale Arts Commission  
 Napa Courthouse, Napa, CA  
 Commissioned by: The Historical Society  
 Salt Palace Convention Center, Salt Lake City, UT  
 Commissioned by: Salt Lake County  
 Sletten Regional Cancer Institute, Great Falls, MT  
 Commissioned by: Benefis Health System; NTDStichler Architecture  
 Umpqua Bank, Napa, CA  
 Commissioned by: Peter A and Vernice H. Gasser Foundation, Inc.  
 Washington Tech Park II, Chantilly, VA

2004	<p>Commissioned by: Corporate Office Properties Trust; Atlantic Arts Arena Parking Structure, Stockton, CA</p>
	<p>Commissioned by: City of Stockton Hospice of Napa Valley, Napa, CA Commissioned by: Hospice of Napa Valley Issaquah Transit Center, Issaquah, WA Commissioned by: Sound Transit Board San Jose Fire Department Station 17, San Jose, CA Commissioned by: City of San Jose San Mateo Public Library, San Mateo, CA Commissioned by: City of San Mateo St. Josephs Hospital and Medical Center, Phoenix, AZ Commissioned by: St. Joseph's Hospital and Medical Center UCSF Parnassus - Mofit-Long Emergency Center, San Francisco, CA Commissioned by: University of California San Francisco</p>
2003	<p>Falcon Field Airport Terminal, Mesa, AZ Commissioned by: City of Mesa Fred Waring Corridor Project, Palm Desert, CA Commissioned by: City of Palm Desert <i>The Great Wall</i>, BioMarin, Novato, CA Commissioned by: BioMarin Pharmaceutical Inc. <i>Over Houston</i>, William P. Hobby Airport, Houston, TX Commissioned by: Houston Airport System; Cultural Arts Council of Houston &amp; Harris Counties Pasadena Collection Development, Pasadena, CA Commissioned by: City of Pasadena Polaris K-12 Alternative School, Anchorage, AK Commissioned by: Municipality of Anchorage San Joaquin Council of Governments, Stockton, CA Commissioned by: City of Stockton; San Joaquin Council of Governments</p>
2002	<p><i>Aluminum Yucca</i>, East Gateway Project, Albuquerque, NM Commissioned by: City of Albuquerque; New Mexico Arts Denver International Airport - Child Care Center, Denver, CO Commissioned by: Denver International Airport Public Art Program Equity <i>Playground Fantastico</i>, Napa, CA Commissioned by: City of Napa; Napa Valley Arts Council Sunnyvale Older Adults Center, Sunnyvale, CA Commissioned by: City of Sunnyvale; Sunnyvale Arts Commission University of Santa Clara Project Design Consultant, Santa Clara, CA Commissioned by: The University of Santa Clara</p>
2001	<p>All Saints Mausoleum, Colma, CA Commissioned by: Roman Catholic ArchBishop of San Francisco BART San Bruno Station, San Bruno, CA Commissioned by: Bay Area Rapid Transit Authority Congregation Beth Israel, San Diego, CA Commissioned by: Congregation Beth Israel; Austin Veum Robbins &amp; Parshalle Kaiser Permanente, Harbor City, CA Commissioned by: Kaiser Permanente; Lee Burkhardt &amp; Lui, Inc. Sacramento Midtown Parking Garage, Sacramento, CA Commissioned by: Sacramento Metropolitan Arts Commission; City of Sacramento SEPTA Frankford Transportation Center, Philadelphia, PA</p>

2000 Commissioned by: Philadelphia Arts Commission; Southeastern Pennsylvania Transportation Authority  
Applied Micro Circuits Corporation (AMCC) Headquarters, San Diego, CA  
Commissioned by: AMCC; Art Consultants West  
Charles Schwab Building, San Francisco, CA  
Commissioned by: HOK Architects; San Francisco Arts Commission  
*The Glass Forest*, TIAA-CREF Corporate Headquarters, Charlotte, NC  
Commissioned by: TIAA-CREF; Hughes Good O'Leary & Ryan  
Congregation Beth Israel, San Diego, CA  
Commissioned by: Congregation Beth Israel  
Hickory Ridge Middle School, Memphis, TN  
Commissioned by: Memphis Arts Council; Memphis City School Board  
UCSF - Comprehensive Cancer Care Center at Mount Zion, San Francisco, CA  
Commissioned by: University of California at San Francisco Arts for Recovery Program

1999 Deloitte & Touche, San Francisco, CA  
Commissioned by: Deloitte & Touche  
J Wine Company, Healdsburg, CA  
Commissioned by: Judy Jordan; Hall & Bartley  
KPMG, Los Angeles, CA  
Commissioned by: KPMG; BC Art Consultants  
Stowers Medical Research Center, Kansas City, MO  
Commissioned by: Mr. and Mrs. Stowers; MBT Interiors & PGAV Architects  
University of Oregon - Recreation & Fitness Center, Eugene, OR  
Commissioned by: Oregon Arts Commission, Oregon University System

1998 Diocese of Santa Rosa, Santa Rosa, CA  
Commissioned by: Roman Catholic Diocese of Santa Rosa  
Elihu Harris State Building and Childcare Center, Oakland, CA  
Commissioned by: State of California; DMJM Architects  
Hope and Healing Center, Memphis, TN  
Commissioned by: The Memphis Arts Council; The Church Health Center of Memphis  
Luckman Plaza, San Francisco, CA  
Commissioned by: Luckman Plaza Management  
Mozart Corporation, Mountain View, CA  
Commissioned by: City of Mountain View; Korth, Sunseri, Hagey Architects  
San Francisco Civic Center, San Francisco, CA  
Commissioned by ISEC Inc.; SMWM Architect  
*Angle of Incidence*, Utah State University - Widstoe Hall Science Learning Center, Logan, UT  
Commissioned by: Utah Arts Council; Utah State University

1997 105 Madison Avenue, New York, NY  
Commissioned by: Elias Associates  
Anaheim Stadium Renovation, Anaheim, CA  
Commissioned by: Walt Disney Imagineering  
Art Hotels Sapporo, Sapporo, Japan  
Commissioned by: Art Hotels Sapporo in conjunction with Killingsworth, Stricker, Lindgren,  
Wilson + Assoc. Architects  
Entertainment Partners, Burbank, CA  
Commissioned by: City of Burbank; Daniel Chudnovsky Architects  
*Falling Leaves and Partition Wall*, Cordant Technologies, Ogden, UT  
Commissioned by: Cordant Technologies  
FotoKem Industries Inc., Burbank, CA  
Commissioned by: FotoKem Industries Inc.; Daniel Chudnovsky Architects

- Jewish Community Center of Long Beach, Long Beach, CA  
 Commissioned by: The Jewish Federation of the Long Beach and Greater Orange County  
 Linear Hair, Irvine, CA  
 Commissioned by: Carlton Hair International  
 Ontario International Airport, Ontario, CA  
 Commissioned by: The City of Los Angeles; Los Angeles World Airports Public Art Program  
 University of California San Francisco – Anatomy Lab, San Francisco, CA  
 Commissioned by: University of California San Francisco; SRG Architects  
 University of Utah - Skaggs Biology Building, Salt Lake City, UT  
 Commissioned by: Salt Lake City Arts; University of Utah  
 Utah Transit Authority Delta Center Station, Salt Lake City, UT  
 Commissioned by: Salt Lake City Arts Council, Utah Transit Authority Arts in Transit Program
- 1996  
 Abdulla Mubarak Ceremonial Hall, Safat, Kuwait  
 Commissioned by: Al Riyash Trading Co.  
 Artesa Winery Fountain, Napa, CA  
 Commissioned by: The Raventos Family  
 Hard Rock Café, Seoul, Korea  
 Commissioned by: Hard Rock Café Seoul; IDEAS  
 Hiroshige Art Museum, Tendo, Japan  
 Commissioned by: The Yamaguchi Family, Kumagai Gumi Co., LTD.  
 Ronald Regan National Airport, Washington, D.C.  
 Commissioned by: Metropolitan Washington Airport Authority; Cesar Pelli
- 1995  
 AT Kearney, Cosa Mesa, CA  
 Commissioned by: AT Kearney Inc.  
 The Getty Center, Los Angeles, CA  
 Commissioned by: The J. Paul Getty Trust Fund; Richard Meier and Partners Architects  
 Houston Light and Power, Houston, TX  
 Commissioned by: Houston Light and Power; DMJM Keating  
 Lincoln Plaza, Sacramento, CA  
 Commissioned by: LPA Architects  
 Tendo Wedding Chapel and Hotel, Tendo, Japan  
 Commissioned by: Kumagai Gumi Co., LTD.
- 1994  
 Dominican Sisters, San Rafael, CA  
 Commissioned by: The Sisters of St. Dominic; Treffinger, Walz & MacLeod Architects and Planners  
 Oracle Corporation; Redwood Shores, CA  
 Commissioned by: Oracle Corporation; Seccombe Design Associates
- 1993  
 University of California at San Diego Medical Center; San Diego, CA  
 Commissioned by: The University of San Diego; Carmen, Farnum, Igonda Architects
- 1992  
 Fremont Police Facility, Fremont, CA  
 Commissioned by: Fremont Arts Commission
- 1990  
 San Diego Hospice Meditation Room, San Diego, CA  
 Commissioned by: San Diego Hospice
- 1989  
 University of Alaska Geophysical Institute, Fairbanks, AK  
 Commissioned by: Fairbanks Arts Commission

#### **SELECTED RESIDENTIAL COMMISSIONS**

- 2015  
 Urbach Residence, Rutherford, CA  
 Commissioned by: Janet Effland-Urbach and Bill Urbach  
 Private Commission, Los Altos Hills, CA
- 2014  
 Nichols Residence, St. Helena, CA

Commissioned by: Amy and John Nichols  
Otton Residence, Napa, CA

- 2012 Commissioned by: Nancy and Terry Otton  
Fischer Residence, Napa, CA
- 2010 Commissioned by: Karen and Joe Fischer  
Jacobson Residence, New York City, NY
- Commissioned by: Dana and Joseph Jacobson  
Vasudevan Residence, Los Altos, CA
- 2008 Commissioned by: R. & Jayashree Vasudevan  
Christal Residence, Carmel by the Sea, CA
- Commissioned by: Lynda and Tom Christal  
Warner Residence, San Jose
- Commissioned by: Laurie and Mike Warner  
Gotschall Residence, Laguna Beach
- Commissioned by: Susan and Ed Gotschall  
Weiss Residence, Big Sur, CA
- 2006 Commissioned by: Jean and Tim Weiss  
Taft Residence, Los Altos, CA.
- Commissioned by: Pamela and Edward Taft  
Owens Residence, Elmhurst, IL
- 2005 Commissioned by: Gigi and James Owens  
Devine Residence, Laguna Beach, CA
- Commissioned by: Leason Pomeroy, LP3 Architecture

## SELECTED AWARDS

- 2017 The Silicon Valley Business Journal: 2017 Silicon Valley Structures Awards in the category Community Impact for the 4th Street Parking Garage, Morgan Hill, CA featuring Poppy Jasper and Tarantula  
Poppy Jasper + Tarantula, CODAworx Video Awards Top 100 - Collaboration of Art and Design
- 2015 Napa 9/11 Memorial - CODAworx Video Awards Top 100 - Collaboration of Art and Design  
Highwire Travelers, Raleigh-Durham International Airport - 2015 CODA Awards Merit Winner – Transportation
- 2014 Napa 9/11 Memorial, CODAworx Video Awards Top 100, Collaboration of Art and Design
- 2013 Mountain Range and River of Light, John Muir Medical Center - CODAworx Awards Top 100 - Collaboration of Art and Design
- 2010 Certificate of Merit, American Society of Interior Designers, California Peninsula Chapter
- 2009 Gotta Go, Jacksonville International Airport, Jacksonville, FL - Americans for the Arts Public Art Network - Best Public Art in the United States,
- 2009 The Bridge Homeless Assistance Center, Dallas, TX - Housing Committee Award for Special Housing, American Institute of Architects - Award for Community-Informed Design, Department of Housing and Urban Development
- 2006 Stockton Arena Public Parking Structure, Stockton, CA - Americans for the Arts Public Art Network - Best Public Art in the United States

## SELECTED LECTURES | TEACHING | APPOINTMENTS

- 2018 Stained Glass Association of America, 109th Annual Summer Conference, Long Beach, CA - "The Changing Landscape of Art Glass"
- 2017 American Institute of Architects, Monterey Design Conference, Monterey CA – "Art In Architecture"  
American Glass Guild Annual Conference, Rochester, NY "Integration of Artglass and Architecture"  
NeoCon Annual Conference, Chicago, IL "Integration of Art and Architecture"
- 2016 IIDA Forum: "Design for Humanity: An exploration into the power and influence of art and design on at-risk youth."
- 2015 American Institute of Architects, Monterey Design Conference, Monterey CA – "Art In Architecture"

	BECon Conference, Emeryville, CA - Pecha Kucha - "From Napa With Love"
	AAAE Arts in the Airport Workshop, Dallas, CO - "I Walk The Line - The Balancing Act of Art + Business"
	Dominican Sisters of San Rafael, CA - "The Spiritual in Art   An Artist's Perspective"
2014	AAAE Arts in the Airport Workshop, San Francisco, CA - "Trials, Tribulations & Triumphs of Integrating Art into Airports"
2011	American Institute of Architects Monterey Design Conference, Monterey, CA - "The Great Collaboration: Integrating Art & Architecture"
2009	Stained Glass Association of America, Oklahoma City, OK - "Stained Glass Then and Now"
	University of San Francisco, School of Architecture, San Francisco, CA - "Art in Architecture"
2008	The Bridge Homeless Assistance Center, Dallas, TX - "Art Matters"
2007	BECon Conference, Portland, OR - "Making Art, Love and Money"
2006	Member of the Board of Directors, American Institute of Architects San Francisco, Center for Architecture & Design
2005	Chairman, City of Napa Planning Commission
2002	President, Napa Valley Museum Board of Trustees
2000	Urban Art Commission & The American Institute of Architects, Memphis, TN - "Designing our Community Through Art in Architecture"
1999	American Institute of Architects National Conference, San Francisco, CA - "Redefining Contemporary Glass"
1997	Society for Environmental Graphic Design National Conference, San Francisco, CA - Guest Lecture
1996	PLANETREE Annual Conference, San Francisco, CA - "Light and Color: Elements that Heal"

## SELECTED EXHIBITIONS

2017	Solo Show, Art Ventures, Menlo Park, CA
2014 – 2016	Rotating Solo Exhibition. St. Supéry Estate Vineyards & Winery
2012 – Present	Art on 1st; Group Exhibition, First Street, Napa, CA
2010 – Present	Public Art Walk, Town of Yountville, CA
1997 – 2016	Permanent Resident Artist, Rotating Solo Exhibition. Artesa Winery, Napa, CA
2014	12 x 12, Artamo Gallery, Santa Barbara, CA
2014	<i>Currents</i> , St. Supéry Estate Vineyards & Winery, Rutherford, CA
2009	<i>Beauty</i> , Group Exhibition, The Gallery at Cliff Lede Vineyards, Yountville, CA
2007	<i>Metal Matters</i> , Solo Exhibition, Robert Mondavi Winery, Oakville, CA
2006	Art + Architecture, Group Exhibition. Keller Estate Winery, Petaluma, CA
2005	Summer in Southpark, Group Exhibition. Andrea Schwartz Gallery, San Francisco, CA
2005	<i>Orange Door-Blue Window</i> , Solo Exhibition. Metalstone Gallery, New York, NY
2005	Group Exhibition, Artamo Gallery, Santa Barbara, CA
2005	El Paseo Exhibition, El Paseo Drive, Palm Desert, CA
2004	Body Talk; Solo Exhibition, The UMA Gallery, New York, NY
2004	In Nature's Light, New York Hall of Science, New York, NY

## EDUCATION

1990-92	Life Center Collaborative Project with Professor Johannes Schreiter, Napa, CA
1986	Pilchuck Glass School, Stanwood, WA
1980-82	Apprenticeship at Universal Glass Studio, Blieskastel, Germany

## BIRTHPLACE

1959	Rochester, NY
------	---------------



**KSH ARCHITECTS**  
KORTH SUNSERI HAGEY

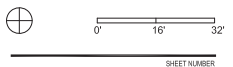
349 SUTTER STREET  
SAN FRANCISCO, CA 94108  
TEL: 415.954.1960 FAX: 415.954.1970

ISSUES AND REVISIONS		
NO.	DATE	DESCRIPTION
	2015.0701	PLANNING SET
	2015.0821	PLANNING RESUBMITTAL
	2016.1221	PLANNING RESUBMITTAL
	2017.0120	PLANNING RESUBMITTAL

PROJECT NUMBER  
15008,00

SHEET TITLE  
**GARAGE ELEVATIONS**

SCALE  
1/16"=1'-0"



### A3.2



Note: Elevations reflect location of artwork. Imagery is not represented.

• CONCEPTUAL DESIGN DETAIL for waterjet-cut pattern  
•

