

NDC

Sunnyvale 2019 Districts
Plan Submitter Comments

101 David Bratman

The attached Excel submission is intended not as a serious proposal, but more as an experimental entry intended to provide other entrants with some data they can use to work from, and I hope it will be taken in that spirit.

In this entry, District 2 is intended as the most concentrated Hispanic/Latino district that it's possible to draw with the Excel population units. I started with the units with heaviest concentration of Hispanics in the census population, and built around that with the contiguous districts with the highest concentration until I had a district-sized area. This includes all the highest Hispanic population units except those around Acalanes, which is too far away from the rest to put in the same high-concentration district. It has 42% Hispanic total population, but only 25% Hispanic voting age citizen population, which shows part of the problem in drawing districts this way.

Districts 5 and 6 are drawn to include as much as possible of the Cupertino and Santa Clara school districts, respectively, in one Council district each. In both cases the school district area in Sunnyvale is larger than a Council district.

Following the suggestion at the meeting to draw fill-in districts in the parts of the city you're less concerned with, I've created districts 1, 3, and 4 as fill-ins. Note that District 1 is heavily gerrymandered, connecting two separated populated areas via the unpopulated industrial park, which shows the limitations of drawing the ideal Latino district. And District 3 would require some microscopic adjustment, lower than the population unit level, to keep it contiguous. I hope you will accept it as designated as an acceptable district for purposes of display on the website.

Still, I hope this idea will be useful for other citizens who wish to draw less rigid districts concentrated on the same basis.

Follow up comments:

In the meantime, I have at least modified it enough to make the population balances better, but District 2 is still specifically drawn to maximize Hispanics. I've attached the modified file. If it can be posted for users to see, with my initial explanation of what I was doing attached, and dropped from your list of preferred plans to submit to Council, that would be my preference.

102 Holly Lofgren

Please find attached my district map submission package. It includes: a) the Excel file b) a hard copy drawing of the districts c) this page of explanation. Please acknowledge receipt of all three items in my package with a return email.

I attended one map drawing training where we were encouraged to give reasons for our district lines. Besides dividing them roughly equally for the populations, I took into consideration the following items:

NDC

**Sunnyvale 2019 Districts
Plan Submitter Comments**

- a) While there are no really heavily predominant races clusters in Sunnyvale, the data showed a preponderance of Hispanic and Asian ethnicity people in certain areas and I tried to keep them together.
- b) Another community of interest is the high school districts and I followed those lines as much as possible. Notable exceptions are area 50 and area 71.
- c) Another community of interest factor is major highways. I used Highway 101 as a dividing line while still attempting to keep the mobile home parks together, as some are found below Highway 101. Thus, I had a larger population than I desired due to limitations using the Excel tool, but the mobile homes area south of Highway 101 could be selected more specifically by the consultant to reduce the size of that district.
- d) Other major roads such as Old San Francisco, Remington and parts of Hollenbeck also seemed to garner communities of interest.
- e) I kept the central part of the city together as it seemed important to not divide the downtown, so between El Camino and Central Expressway, I have a district.

Thank you for the opportunity to participate in district map making.

103 Martin Gates

The districts are relatively balanced numbers and the shapes have a reasonable center of area without outlying branches. [Pop Unit 30 could be in district 3 for better shape, but pushes 3 over 1K from ideal]

104 Pam Anderson

I think this map makes sense because it relies on elementary school boundaries as the primary 'community of interest'. School attendance is one of the strongest ways that our community comes together, and creates natural boundaries in our community. A summary of how my districts are organized is as follows: Properties in Area 1 are generally assigned to Lakewood, Fairwood, San Miguel and Mayne elementary schools, Area 4 is assigned to Cumberland, Cherry Chase and West Valley Schools, Area 5 is Stocklemeier and Nimitz, and Area 6 is those assigned to Santa Clara Unified School District (e.g. Laurelwood, Ponderosa, Braly and Bracher.) Areas 2 & 3 are all assigned to Sunnyvale schools Bishop, Vargas, Ellis, and some San Miguel. For these 2 areas significant road boundaries area also considered (e.g. El Camino, and Evelyn Ave/Central Exwy.) There are a few population units that had to be assigned as exceptions in order to meet the criteria of 'essentially equal population' - specifically, units 47 & 50 are part of the Cumberland boundaries, but are assigned to District 3 (using El Camino as a boundary) and unit 71 is part of Ellis school, but is assigned to District 5. Unit 34 is assigned to Zone 3 because the school assigned to this unit is Vargas which is part of Area 3. I could not assign some of the units with '0' population, as I wasn't sure which was which.

105 Lou Saviano

Thank you for inviting community input on creating new City Council districts. I've attached a proposed map, outlining 6 districts.

NDC

**Sunnyvale 2019 Districts
Plan Submitter Comments**

The “population unit” for my proposed districts ranges from 23,061 to 23,665. (Please feel free to check my math.) I’ve tried to construct districts that are geographically compact in shape and that try to generally conform with existing boundaries (e.g. Cupertino Union School District for District 1) and recognizable demarcation lines, (e.g. Highway 101, El Camino Real, Fremont Ave. etc.).

I have lived (happily) in Sunnyvale for 36 years, and I suggest these districts without any hard knowledge of (or interest in) the demographic composition of these areas. I hope that districts will be drawn in a "demographically agnostic" manner — without regard to the presumed political, religious, philosophical, racial, or ethnic background of the residents. One person, one vote. I do not believe “communities of interest” necessarily are defined by demographic factors.

I support moving to district based elections, as long as the districts are not gerrymandered to give an edge to one type of candidate over another.

106 Mei-Ling Stefan

Although Council does not want a 7-district election, I am dutifully submitting a 7-district map, and the excel file, with my thoughts on drawing the map. My guidelines for proposing which 4 districts will be up for election in 2020 are: (1) All council members whose terms expire in 2020 should be able to run for re-election (2) The 2 districts most heavily populated with ethnic minority groups should be included.

107 Frances Stanley-Jones

DISTRICT 1 Keeps the North Sunnyvale Mobile Home Parks together. Keeps Lakewood Village LWV together with residents NORTH OF 101. It is the preference of the LWV residents this is attached to the paper map submission. The Asian population is 44% high for Sunnyvale. Residents north of 101 and between that and highway 237 face similar issues such as traffic increase in crime schools.

DISTRICT 2 Keeps the Sunnyvale Neighborhood Association SNA of SNAIL San Miguel together. Built in the 1970s they have similar single family homes traffic and land use issues in common. They also share the same junior high school. Residents from this area a very active community in Sunnyvale attended the mapping class on August 7 and want to keep the SNAIL SNA in the same voting district.

DISTRICTS 4 5 6 See separate letter. The same map named smhps2 Full Map has also been submitted to Teri Silva as an email. The emailed map includes the letter from the LWN residents and signatures from mobile home park residents supporting this map.

Note: Exhibit A is included as additional information submitted by the map maker.

109 John Carlsen

East-west hard division along railway Union Pacific, and north-south soft division along storm channel, East Channel, resulting in population division within about 6 percent of ideal.

110 John Carlsen

NDC

**Sunnyvale 2019 Districts
Plan Submitter Comments**

Compact districts with southern four quadrants radiating from Community Center and northern districts stacked numbered spiraling outward from city center district 1 in approximate order in which they were developed and having population distribution variance from median within 30 people.

110 John Carlsen

Population evenly distributed within 0.01%, 0-3 people, with each district neighboring at least 2 others and sharing borders near city center, numbered spiraling outward.

111 John Carlsen

Compact districts with population distribution variation of 0.2 percent, within 0.1 percent of median, numbered spiraling outward from city center in approximate order in which they were developed.

112 Kevin Kelly

Districts are formed by natural transportation boundaries that already separate and define many neighborhoods. Any deviations are purely to provide numerical population balance which would need to be changed anyway after the new census.

113 Kevin Kelly

Designed around the premise that all Sunnyvale residents have a shared interest in the development of downtown and the city core this plan has all six districts converging there and sharing responsibility for the downtown area. Major roadways and transportation corridors are used as district borders and 4 districts share portions of El Camino Real the major commercial retail strip. The high-tech commercial area north of 237 is shared by 2 districts.

114 Yuan Xu

This is a revised plan based on my previous Balanced Cut to make the boundary look more reasonable between district 1 and 3.

115 Timothy Oey

This is as compact, balanced and natural a set of districts as I could create around existing natural Sunnyvale neighborhoods using major roads and rail lines as boundaries.

116 Cameron Kelly

This proposal provides a fair and balanced level of population per district while maintaining sensible dividing lines along major roads and train tracks in order to show how neighboring communities reflect larger areas, which are here translated into districts. This plan also intends to ensure representation among minorities. Each census block has been apportioned into a specific district so that minorities will have more empowerment through voting and representation without rendering their representatives ineffective by allocating a district for a single ethnic group. I have been involved in numerous community activities in Sunnyvale

NDC

**Sunnyvale 2019 Districts
Plan Submitter Comments**

which allowed me to interact with a diverse pool of families and individuals. They all have one thing in common: they live in Sunnyvale, and this has inspired me to submit what I believe would be the most comprehensive district map plan unique to the City of Sunnyvale.

117 Richard Mehlinger

This plan aims to respect use major roads as boundaries where possible. The exception to this is D6, which is designed to maximize Asian-American CVAP. D4 meanwhile gets 25% Latino CVAP, which is probably about as high as it's possible to get. D6 would include Butcher's corner.

118 Frank Hand

I am submitting two suggestions for Sunnyvale's district map. My preference is the map named Bal Neighborhoods Development Downtown (#118). The maps emphasize each neighborhoods identity, inclusion, i.e. communities of interest, values, and encourage participation in Sunnyvale's ongoing revitalization development. Thank you.

119 Frank Hand

I am submitting two suggestions for Sunnyvale's district map. My preference is the map named Bal Neighborhoods Development Downtown (#118). The maps emphasize each neighborhoods identity inclusion, i.e. communities of interest, values, and encourage participation in Sunnyvale's ongoing revitalization & development. Thank you.

120 Evelyn Rocha

Through meetings with the mobile home park community, SNAIL, the Latinx community, the Asian American community, and the Hindu community, in addition to a joint unity meeting consisting of a large and diverse cohort of Sunnyvale residents, we were able to build broad support for both Unity Maps A and B. These maps reflect robust community of interest feedback and knowledge from the lived experiences of community members across Sunnyvale. Below you will find specific community of interest reasons that support this district map in more depth. Thank you for your consideration. We are sending the full COI testimony by email.

Full testimony email text:

This map is the result of many meetings with a large and diverse group of Sunnyvale residents, representing communities including the mobile home park community, SNAIL, the Latinx community, the Asian American community, and the Hindu community.

This map reflects input from all of these residents and communities on traditional districting criteria based on their experiences living in Sunnyvale. Below you will find specific community of interest reasons that support this district map in more depth. Thank you for your consideration.

District 1

- This district keeps the SNAIL neighborhood (bounded by Fair Oaks, Maude, Mathilda, and the 101 freeway) whole. The SNAIL neighborhood should be kept

NDC

**Sunnyvale 2019 Districts
Plan Submitter Comments**

whole because it is a tight-knit community that also has its own official 501(c) 4 non-profit status. SNAIL distributes 1,200 monthly newsletters door to door, hosts the largest and most popular National Night Out, and has an active web presence.

- This district keeps low and middle income communities in North central Sunnyvale together. Socio-economically, SNAIL residents have strong similarities to folks living South of Maude and north of the train tracks such as the Lowlanders neighborhood. It also keeps SNAIL together with San Miguel. Both neighborhoods are made up mostly of single-family homes.
- This district keeps stores used by the Latinx community, such as Chavez Supermarket, Mi Ranchito Produce, and Guadalajara Market together.
- This district keeps important community services (Columbia Neighborhood Center, Sunnyvale Community Services) together in a central district in the City.
- This district also results in a Latino influence district.

District 2

- This district keeps the following mobile home parks in North Sunnyvale in one district so that residents can advocate together on issues that impact their community, like traffic, office development, rent stabilization, and more: Willow Ranch, Cape Cod, Fox hollow, Fair Oaks, El Dorado, Casa De Amigos, Plaza del Rey, and Adobe Wells.
- Historically, North Sunnyvale has been geographically underrepresented on the City Council and a North Sunnyvale district ensures that a North Sunnyvale resident gets elected to the Council.
- This district contains the Sunnyvale Hindu Temple on Persian drive, which is the largest Hindu temple in the South Bay and serves a large Hindu community, including a significant population of Hindus who live in the surrounding area.

District 3

- District 3 respects the boundary between Cupertino Union Elementary School District and Santa Clara Unified School District by following Wolfe Road south of El Camino Real. Parents are actively involved in their children's education in CUSD where there is a special focus on math and music. Council district lines that align with school district boundaries is important for the Asian American community so that the Council can be responsive to issues important to students and their parents.
- Louis E. Stocklmeir Elementary School is in this district. At around 1,200 students, this is the largest elementary school in the entire Bay Area. With a very involved parent community, Stocklmeir has the highest test scores of any public school in the city.
- Next to Stocklmeir Elementary School is Ortega Park which attracts folks from all around District 2 for picnics, playgrounds, walks, sports, yoga, and tai chi. The school and the park are the hub for people of District 2 to meet and be in community.
- This district also creates an Asian American empowerment district. Asian Americans have been attracted to this area by a combination of the quality of the schools; close proximity to different Asian restaurants, grocery stores, and places of worship; and relatively short commutes to major employers.

District 4

NDC

Sunnyvale 2019 Districts Plan Submitter Comments

- District 4 respects the boundary between Cupertino Union Elementary School District and Santa Clara Unified School District by following Wolfe Road south of El Camino Real. Aligning council district lines with school district lines have been identified as a priority for the Asian American community.
- This district keeps the Sunnyvale portions of the attendance zones for Ponderosa, Laurelwood, and Braly Elementary schools together. These three zones combine for a close community around Peterson Middle School.

District 5

- Includes Cherry Chase, Cumberland, Cherry Hill, and West Valley. This district keeps together areas that have high rates of home ownership and higher income levels than the city at large.
- The Bar Yohai Sephardic Minyan synagogue and Chabad of Sunnyvale, which both serve the Jewish community, are located in this district.

District 6

- This district has a high percentage of renters and apartment units.
- This district keeps most of the Heritage district or downtown area intact.
- It also keeps a number of Indian grocery stores along El Camino Real together in one district.
- District 6 keeps many of the apartment buildings on the far west side of the City, north of El Camino, together.

Other Notes

- Multiple districts touch the downtown urban corridor so all districts have a responsibility to look after the communities there.

Proposed Sequencing: D1, 2, and 3 in 2020 and D4, 5, and 6 in 2022

This sequencing ensures that the communities that have historically lacked representation on City Council and that see their voting power increased because of the transition to district elections, including Latinx voters (D1), Asian American voters (D3), and mobile home park resident voters (D2), will have an opportunity to vote in the first district-based elections in 2020.

Sign-ons

Valerie Suarez - D1; Sunnyvale community chair

Diane Gleason - D1

Kathy Higuchi - D1

Bowman Ching - D1

Janette Brambila - D1

Eloisa Herrera – D1

Modesta Albino – D1

Janet Takahashi - resident of Cupertino but active at the Congregational Church of Sunnyvale located in D1 and previously lived in Sunnyvale for 15 years

Ram Agarwal - D2; active member of Hindu Temple

MJ LaRoche - D2

Galen Davis - D3

Cal Cornwell - D3

Samir Kalra - D3

Scott Manley - D4

Srivats Iyer – D4

Naomi Nakano-Matsumoto – D5

NDC

**Sunnyvale 2019 Districts
Plan Submitter Comments**

Beth Claywell - D5
Coleen Hausler - D5
Elsa Amboy - D5
Ray Xu – D5
Evelyn Rocha - D6
Ann Stevenson - resident of Cupertino but active at St. Thomas Episcopal Church located in D6
Rita Welsh

121 Martin Pyne

This plan preserves communities of interest across Sunnyvale. Districts 2 and 6 roughly break along school district boundaries. District 4 contains all of the trailer parks in north Sunnyvale with District 5 containing the rest of SNAIL and apartments along Fair Oaks. District 5 is a majority-minority coalition district in terms of CVAP while District 2 is an AAPI-opportunity district. I would sequence districts 1, 4 and 5 to go in 2020 as they had the largest drop-off in vote between 2016 and 2014 suggesting that they would benefit the most from voting in a presidential year.

122 Martin Pyne

This plan preserves communities of interest across Sunnyvale in a somewhat different way than in the other plan I submitted. Districts 2 and 6 roughly break along school district boundaries. District 4 contains all of Sunnyvale north of 101 plus the San Miguel neighborhood. District 5 remains a majority-minority coalition district in terms of CVAP containing all of SNAIL, while District 2 is an AAPI-opportunity district. I would sequence districts 1, 4 and 5 to go in 2020 as they had the largest drop-off in vote between 2016 and 2014, suggesting that they would benefit the most from voting in a presidential year.

123 Kristel Wickham

Intention was to create simple district boundaries that aligned to geographic neighborhoods, main roadways and the railroad. Harder than I thought to get the population numbers to be equal. Thanks for the opportunity to suggest.

124 Valérie Suarès, SNAIL

Here is SNAIL's members recommended map.

D1: includes everything north of 101, and the western edge down to the train tracks. Most of the mobile home parks are north of 101, but also includes Pop Unit ID#26 which is Mary Manor Mobile Home Park.

In D2, keeping apts. together, housing single family homes East of Mathilda and North of the train tracks, as we move towards Lawrence Expressway there are more apts. and condos. Pop Unit ID# 53 and 60 are apts. whereas 59 is single family houses. Perhaps Pop Unit# 59 can be with Ponderosa neighborhood.

NDC

**Sunnyvale 2019 Districts
Plan Submitter Comments**

In Pop Unit ID# 21, there is a small mobile home park, but the majority of this population unit is single family homes which are part of the SNAIL neighborhood.

This SNAIL neighborhood with over 1,400 is historically very active with a large number of regular and annual events have been and are hosted in this particular Pop Unit. SNAIL neighborhood include Pop Unit IDs# 20, 19, 21, 28. We share similarities economically north of the tracks. The track is a natural boundary.

To reinforce the reasons why we believe SNAIL should remain intact and undivided, I have enclosed a map of the SNAIL neighborhood as found on our SNAIL NextDoor map.

You will find a SNAIL neighborhood profile and collected data of our August 2019 National Night Out, illustrating in red, the streets on which our attendees live. This graphic illustrates that neighbors from most streets in SNAIL, from East to West and North to South are attending this annual and traditional event recognized by City Elected Officials as being most popular with the greatest attendance record in the entire City of Sunnyvale.

Furthermore, you will find some historical and statistical data about the neighborhood historically, which include the location of our annual 3 days yard-sales hosted in a cul-de-sac on Carolina at Glendale, which have generate \$3,652 in its best year.

For these reasons, SNAIL members urge you to keep the SNAIL neighborhood together.

Thank you for keeping the SNAIL Neighborhoods intact, undivided and united.

Note: Additional documents are attached as Exhibit B.

Dave King, supporting SNAIL map (#124)

Over many years the SNAIL neighborhood organization has worked to provide forums and activities for residents in our neighborhood so that all are given a voice and feel that they've been heard.

When you consider proposed voting districts that include the SNAIL - please keep SNAIL in one piece and avoid gerrymandering pieces of SNAIL into parts of other proposed districts.

Any split or fracturing of SNAIL would inevitably pit neighbor against neighbor and slowly destroy the comity we've sought to achieve in our group.

125 Janice Horn

Abstract: Maps for six Sunnyvale voting districts based on the existing maps of the four Zip Codes that cover Sunnyvale: 94085, 94086, 94087, and 94089.

126-8 NDC map proposals

129 Herbert Barchie

NDC**Sunnyvale 2019 Districts**
Plan Submitter Comments

Please keep Population Unit 21 (population: 2274) in a district south of 101 so I can continue to walk to events of the neighborhood. The district I suggest is comprised of single family homes, rentals, and some condos, all sharing schools and a neighborhood association.

(Note from NDC: the smHpa map is Map # 107)

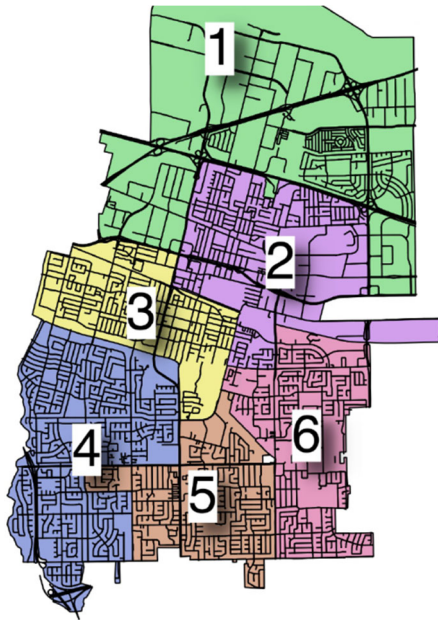
smHpa 2 Full Map

Comments

(see “Maptitude” for the same titled map submitted by Francis Stanley)

Districts	Population	% Deviation	% Hispanic Origin	% NH_DOJ_Asn
1	23,016	-1.42	20.03	43.95
2	23,432	0.36	10.32	51.7
3	23,318	-0.12	7.07	39.57
5	23,764	1.79	37.48	33.14
6	23,415	0.29	17.13	44.89

1. Districts have less than 10% deviation from the largest 23,764 to the smallest 23,016.
2. Districts are all Contiguous
3. Districts are divided along major streets or highways and kept geometric.
4. Areas of interest and school attendance were kept together as explained below
5. In a city like Sunnyvale that is quiet integrated, there was no Gerrymandering along racial lines.



COMMENTS ON DISTRICTS

DISTRICT 1 –

This is largely an industrial area, therefore it is quite large.

- It keeps the North Sunnyvale Mobile Home Parks together.
- It keeps Lakewood Village (LWV) together with residents NORTH OF 101. It is the preference of the LWV residents per the attached email.
- The Asian population is 44% which is high for this city.
- In the attached email to Teri Silva are pages with signature from residents supporting this map. These residents (16in total) attended a mapping class in Plaza del Rey on Aug 7th and reviewed the plans and learned about the mapping process.
- Residents north of 101 and between highway 237, face similar issues such as traffic, increase in crime, & schools.

DISTRICT 2 –

- Keeps the Sunnyvale Neighborhood Associations of SNAIL & San Miguel intact & together.
- They have similar single family homes, have traffic and land use issues in common. They were built in the 1970's and share the same junior high school.
- Residents from this area attended the mapping class on August 7 and agreed that they want to keep the SNAIL Sunnyvale Neighborhood Associate in the same voting district. This map does that. This is an very active community in Sunnyvale.

This map also keeps together other Sunnyvale Neighborhood Associations in the same district: They are Lowlanders, Hazel Heads, Stowell Orchard, & Victory village

DISTRICT 3

This includes the Heritage District and Pastoria Avenue Neighborhood Associations.

DISTRICTS 4, 5 & 6

At the residents request wanted districts to be divided along School District Boundaries.

If you don't live in Sunnyvale you may not know that the Neighborhood Associations are very active. They support events such as "NATIONAL NIGHT OUT". They work together on cleanup and recycling projects. They support the city council and city staff with such projects as this one, "District Elections". Keeping these groups in the same voting district benefits the city as a whole

LETTER FROM OFFICE OF THE SUNNYVALE LAKEWOOD VILLAGE RESIDENTS ASSOCIATION

Boonya <boonya2@yahoo.com>

To:Sunnyvale Alliance

Aug 7 at 7:11 PM

Abby is no longer the LVNA president. I'm one of the new officers. **I asked and we stand with our mobile home residents North of 101.**

We will have greater voting power

[Sent from Yahoo Mail on Android](#)

On Tue, Aug 6, 2019 at 2:57 PM, Sunnyvale Alliance

<smhpamail@yahoo.com> wrote:

Hi Tony:

I just want to clarify why I am asking. No one from Lakewood Village has participated in any meetings etc dealing with District Elections. That I am aware of.

Tomorrow night Aug 7 we will be meeting with people from SNAIL and Mobile Home Parks to draw the lines for the next city council elections in 2020. No more everyone votes for certain seats at large.

I have placed 17 postings on Nextdoor regarding this issue. I *called and left a message for Abby Rosa but heard nothing.*

I am contacting you as a courtesy as it seems you are interested in what goes on around you.

If I don't get any input from "ya'll" I will include you with the mobile homes in the map smHpa will be submitting.

Any questions give me a call. See attached spreadsheet to print out.

Judy Pavlick
smHpa (Sunnyvale Mobile Home Park Alliance) Founder
408 373 0660 Cell
408 734 1580 Home ([Leave a message](#))

SIGNATURES FROM RESIDENTS OF NORTH SUNNYVALE IN FAVOR OF DISTRICT 1 PER ATTACHED MAP & MAP WITH SAME NAME IN MAPTITUDE

smHpa Round 1 Avalon Fair Oaks included

I agree with the "smHpa Round 1 Avalon Fair Oaks" map included in the attached word document

1	Name <u>Brent Moter</u>	Street Address or Mobile Home Park & Space Number (city not needed) [REDACTED]
	Email Address if you want to receive a word document copy <u>brentm5150@yahoo.com</u>	Comments <u>Just want to make sure people from snail got rid of the rest of snail</u>
2	Name <u>Xiaoling Xu</u>	Street Address or Mobile Home Park & Space Number (city not needed) [REDACTED]
	Email Address if you want to receive a word document copy <u>Xuxiaoling@hotmail.com</u>	Comments
3	Name <u>Richard Spector</u>	Street Address or Mobile Home Park & Space Number (city not needed) <u>Sunnyvale 94089</u>
	Email Address if you want to receive a word document copy <u>richdspector@outlook.com</u>	Comments
4	Name <u>Denise Casey</u>	Street Address or Mobile Home Park & Space Number (city not needed) <u>Sunnyvale, CA 94089</u>
	Email Address if you want to receive a word document copy <u>denise.casey@sbcglobal.net</u>	Comments
5	Name <u>Mary Jane LaRoche</u>	Street Address or Mobile Home Park & Space Number (city not needed) <u>Sunnyvale CA 94089</u>
	Email Address if you want to receive a word document copy <u>mjlaroche@yahoo.com</u>	Comments <u>Keep mobile homes together</u>
6	Name <u>SANDRA SKOLNIK</u>	Street Address or Mobile Home Park & Space Number (city not needed) [REDACTED]
	Email Address if you want to receive a word document copy <u>Skolniks@pacbell.net</u>	Comments

smHpa Round 1 Avalon Fair Oaks included

I agree with the "smHpa Round 1 Avalon Fair Oaks" map included in the attached word document

1	Name <u>Mervyn Harrison Hanson</u>	Street Address or Mobile Home Park & Space Number (city not needed) <u>Plaza del Rey</u>
	Email Address if you want to receive a word document copy <u>mervhanson@sbcglobal.net</u>	Comments
2	Name <u>Enid Fox</u>	Street Address or Mobile Home Park & Space Number (city not needed) <u>Plaza del Rey</u>
	Email Address if you want to receive a word document copy <u>Enid.Fox@gmail.com</u>	Comments
3	Name <u>Dwight Fox</u>	Street Address or Mobile Home Park & Space Number (city not needed) <u>(Plaza del</u>
	Email Address if you want to receive a word document copy <u>Dwight.Fox@gmail.com</u>	Comments
4	Name	Street Address or Mobile Home Park & Space Number (city not needed)
	Email Address if you want to receive a word document copy	Comments
		Street Address or Mobile Home Park & Space Number (city not needed)

Submitted by Judy Pavlick August 24, 2019.

SNAIL's Members D1 & D2 Proposed Map



Sums by District Assigned Ideal population: ###
City of Sunnyvale 2019 Public Participation Kit

Valérie Suarez

SNAIL - Sunnyvale Neighborhood

Group	Category	Counts						Unassigned	Total	Percentages						Unassigned	Total
		1	2	3	4	5	6			1	2	3	4	5	6		
Total Population	Tot. Pop.	####	####	0	0	0	0		92,976	####							
	Deviation from Ideal	696	-285	####	####	####	####		####	2.98%	-1.22%	####	####	####	####		102.98%
	Hisp	4,784	8,372	0	0	0	0		13,361	20%	36%	#DIV/0!	#DIV/0!	#DIV/0!	#DIV/0!	14%	19%
	NH Wht	7,765	5,541	0	0	0	0		35,017	32%	24%	#DIV/0!	#DIV/0!	#DIV/0!	#DIV/0!	38%	34%
	NH Blk	580	537	0	0	0	0		1,800	2%	2%	#DIV/0!	#DIV/0!	#DIV/0!	#DIV/0!	2%	2%
Citizen Voting Age Population	NH Asn	10,336	8,047	0	0	0	0		41,172	43%	35%	#DIV/0!	#DIV/0!	#DIV/0!	#DIV/0!	44%	43%
	Total CVAP	15,430	11,424	0	0	0	0		50,271	77.12%							
	Hisp	2,501	3,005	0	0	0	0		5,181	16%	26%	#DIV/0!	#DIV/0!	#DIV/0!	#DIV/0!	6%	14%
	NH Wht	7,109	4,355	0	0	0	0		25,571	46%	38%	#DIV/0!	#DIV/0!	#DIV/0!	#DIV/0!	28%	48%
	NH Blk	761	464	0	0	0	0		1,335	5%	4%	#DIV/0!	#DIV/0!	#DIV/0!	#DIV/0!	1%	3%
Nov. 2016 Registration	NH Asn	4,874	3,310	0	0	0	0		17,495	32%	29%	#DIV/0!	#DIV/0!	#DIV/0!	#DIV/0!	19%	33%
	Total Reg	11,211	8,382	0	0	0	0		41,332	####							
	Latino	2,209	2,036	0	0	0	0		3,939	20%	24%	#DIV/0!	#DIV/0!	#DIV/0!	#DIV/0!	4%	13%
	Asian-American	1,924	1,438	0	0	0	0		9,864	17%	17%	#DIV/0!	#DIV/0!	#DIV/0!	#DIV/0!	11%	22%
	Other	7,078	4,908	0	0	0	0		27,529	63%	59%	#DIV/0!	#DIV/0!	#DIV/0!	#DIV/0!	30%	65%
Nov. 2016 Voters	Total Voters	9,019	6,816	0	0	0	0		34,751	####							
	Latino	1,686	1,620	0	0	0	0		3,102	19%	24%	#DIV/0!	#DIV/0!	#DIV/0!	#DIV/0!	3%	13%
	Asian-American	1,470	1,143	0	0	0	0		8,143	16%	17%	#DIV/0!	#DIV/0!	#DIV/0!	#DIV/0!	9%	21%
	Other	5,863	4,053	0	0	0	0		23,506	65%	59%	#DIV/0!	#DIV/0!	#DIV/0!	#DIV/0!	25%	66%

Submitter's Comments about the plan:

D1: includes everything north of 101, and the western edge down to the train tracks. Most of the mobile home parks are north of 101, but also includes Pop Unit ID#26 which is Mary Manor Mobile Home Park.

In D2, keeping apts together, housing single family homes East of Mathilda and North of the train tracks, as we move towards Lawrence Expw there are more apts and condos. Pop Unit ID# 53 and 60 are apts whereas 59 is single family houses.

Perhaps Pop Unit# 59 can be with Ponderosa neighborhood.

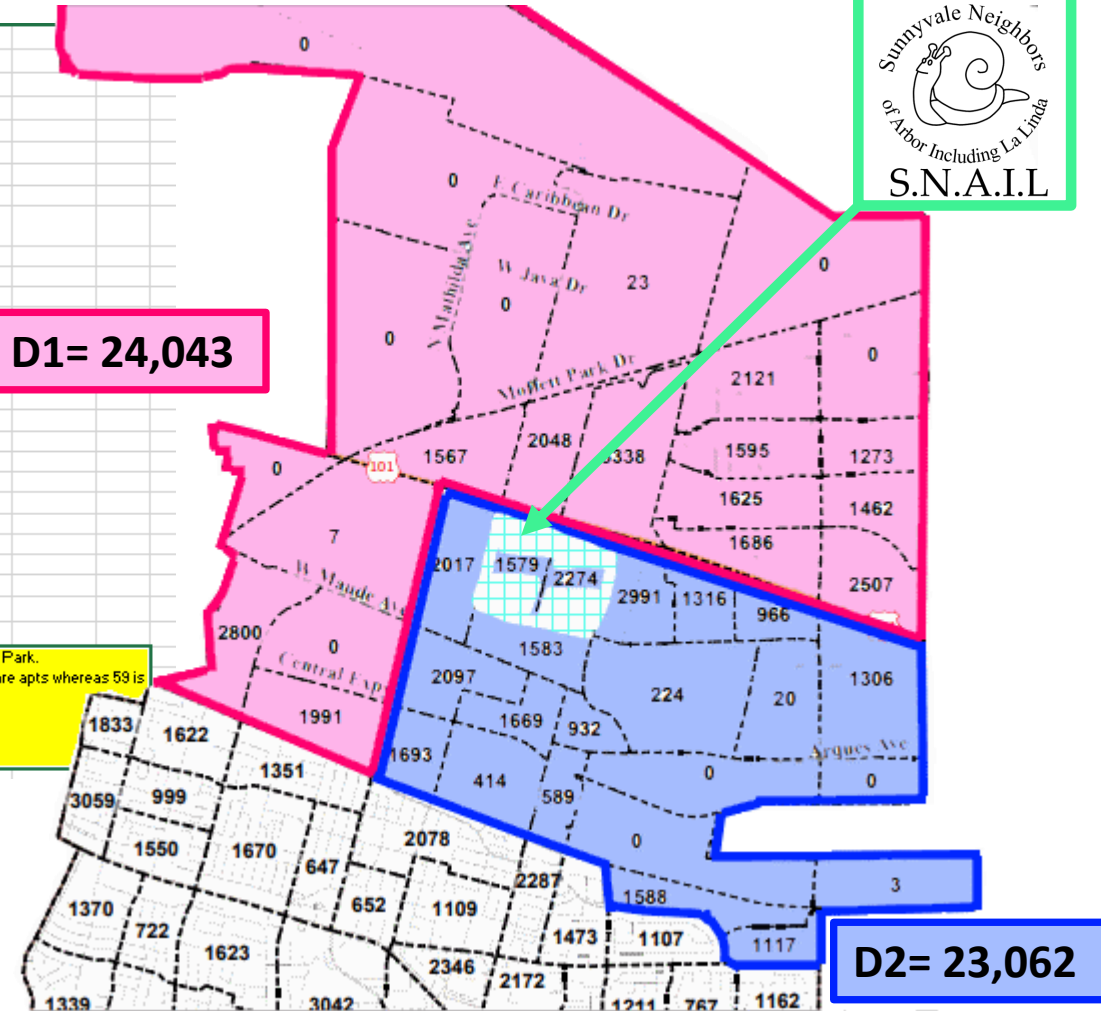
In Pop Unit ID# 21, there is a small mobile home park, but the majority of this population unit is single family homes which are part of the SNAIL neighborhood.

This SNAIL neighborhood with over 1,400 is historically very active and a large number of regular and annual events have been and are hosted in this particular Pop Unit.

D1= 24,043

Keep SNAIL Neighborhood Intact, Undivided and Together

D2= 23,062



SNAIL's Members Map Recommendations

- D1: includes everything north of 101, and the western edge down to the train tracks. Most of the mobile home parks are north of 101, but also includes Pop Unit ID#26 which is Mary Manor Mobile Home Park.
- In D2: keeps apts. together, housing single family homes East of Mathilda and North of the train tracks, as we move towards Lawrence Expressway there are more apts. and condos. Pop Unit ID# 53 and 60 are apts. whereas ID#59 is single family houses.



Why Keep SNAIL Intact and Undivided?

1. This SNAIL neighborhood with over 1,400 homes, is historically very active, with a large number of regular annual events that have been and still are hosted in these particular Pop Unit.
2. SNAIL neighborhood includes Pop Unit IDs# 20, 19, 21, 28.
3. We share similarities economically north of the tracks. The track is a natural boundary.
4. In Pop Unit ID# 21, there is a small mobile home park, which could be annexed by the smHPA but the majority of this Pop Unit is single family homes which are part of the SNAIL neighborhood.

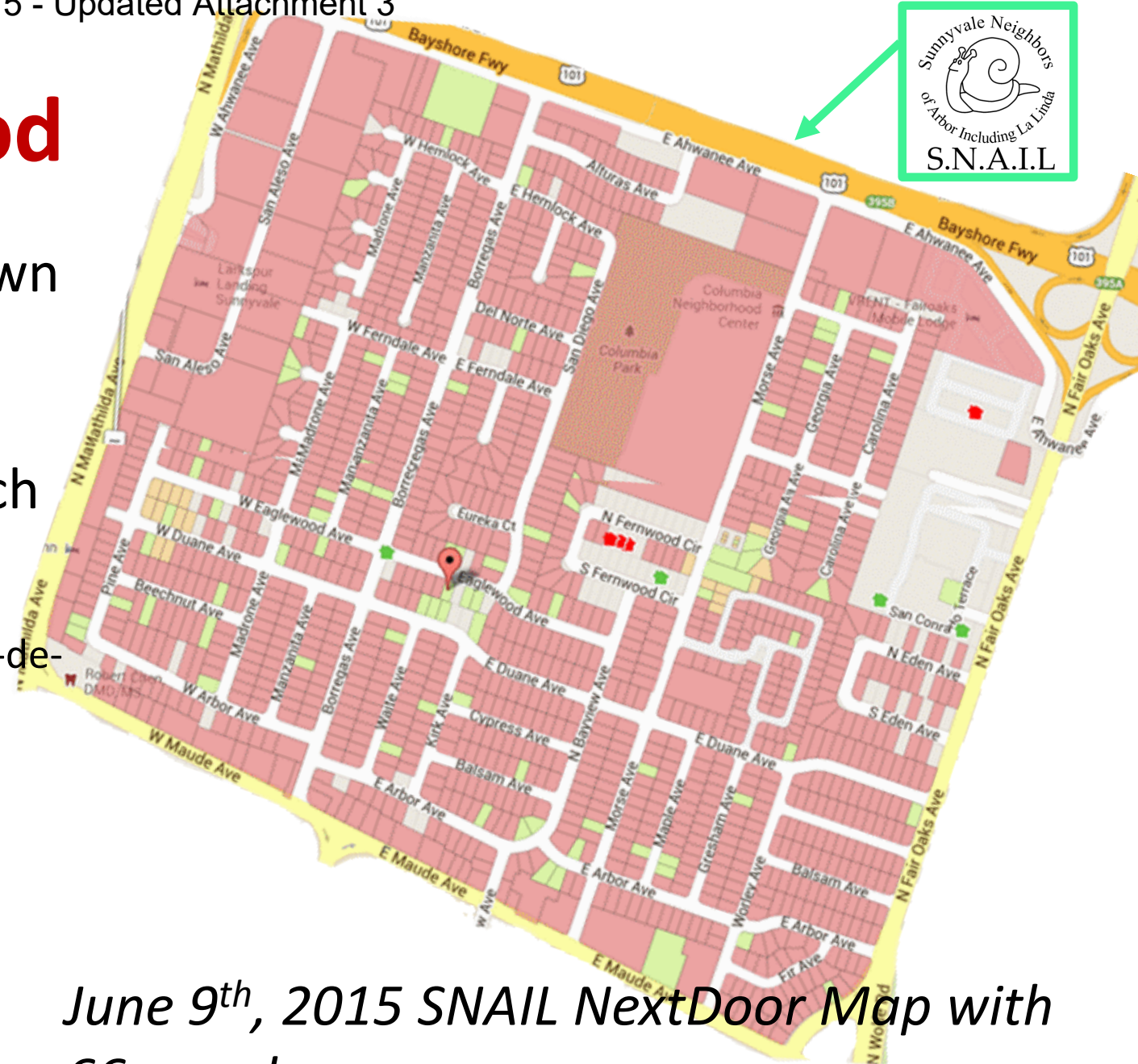


SNAIL Neighborhood Profile

- **SNAIL Neighborhood Profile**
- Established in 1995
- Official 501(c) 4 non-profit
- 2,818 households (apartments and houses)
- 1,200 monthly newsletters distributed door to door
- 4 web presences:
 - www.NextDoor.com (1,557 verified members)
 - www.snail.org main neighborhood website
 - SNAILChitChat Yahoo Group (156 members)
 - SNAIL.org Yahoo Group (2,466 files of archived newsletters, agendas, minutes, grants applications since 1995)

Active Neighborhood

5. Since 2015 SNAIL has had its own 12 CERT-Captains-Team strong
6. Historically strong, SNAIL has very active Block Reps which
 - Maintain SNAIL website
 - Distribute newsletters door to door
 - Host an annual 3-day yard-sale in a cul-de-sac on Carolina at Glendale, which has generated \$3,652 in its best year
 - Organize the largest NNO in the City of Sunnyvale



June 9th, 2015 SNAIL NextDoor Map with 66 members

SNAIL NextDoor Map as of 2019



Welcome to SNAIL - a neighborhood organization comprised of over 1,400 single family homes located in the north-central part of Sunnyvale, between Hwy 101, Maude, Mathilda, and Fair Oaks Avenues.

Our purpose is to renew that "old-fashioned neighborhood" feeling in our area, to be better informed about the city services that are available to us, and to provide a "united voice" with which to express our concerns to the City of Sunnyvale.

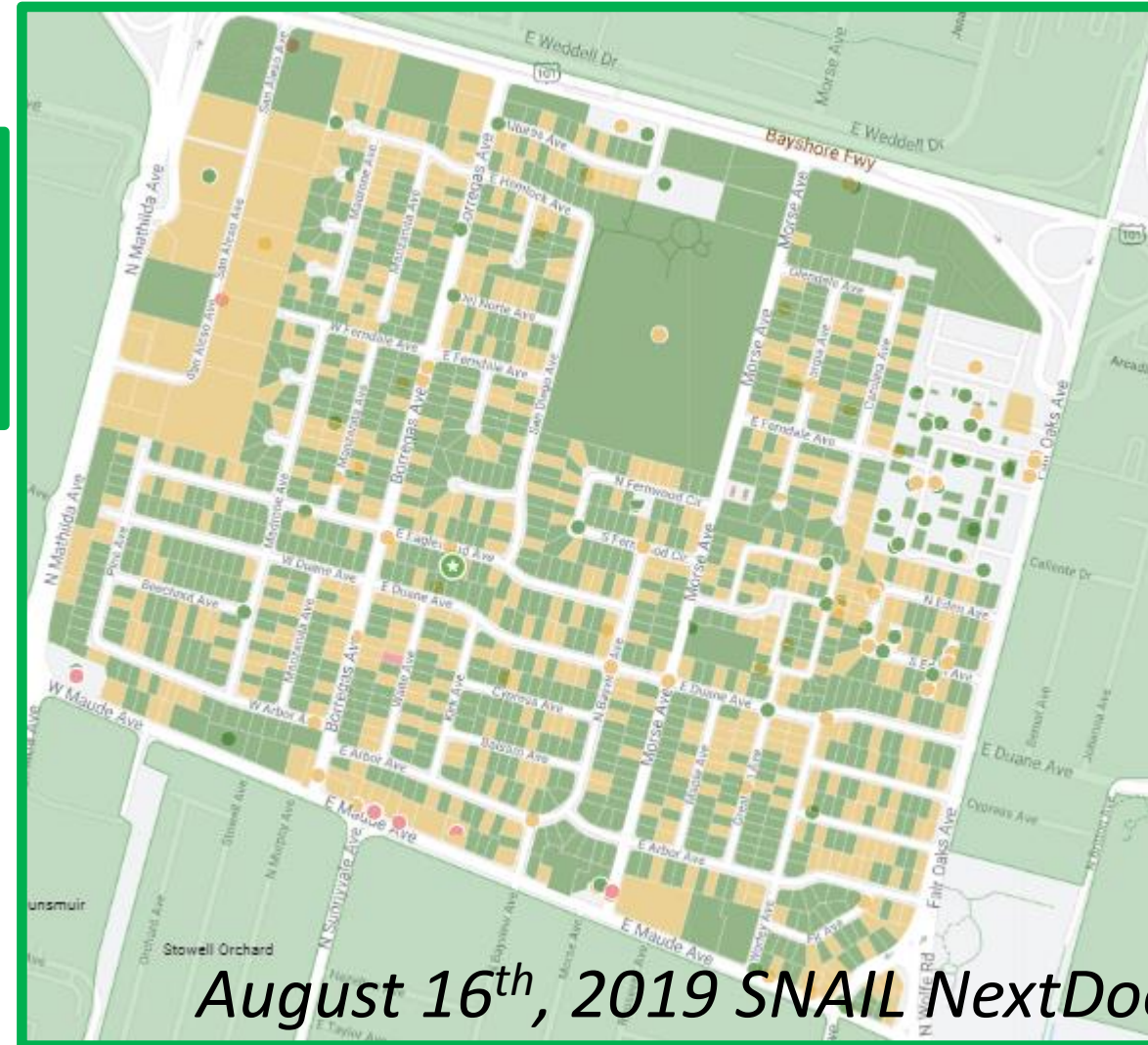
Snail

1,555 neighbors

[Invite](#)

40% of 2,818 households

10,414 neighbors in
27 nearby neighborhoods



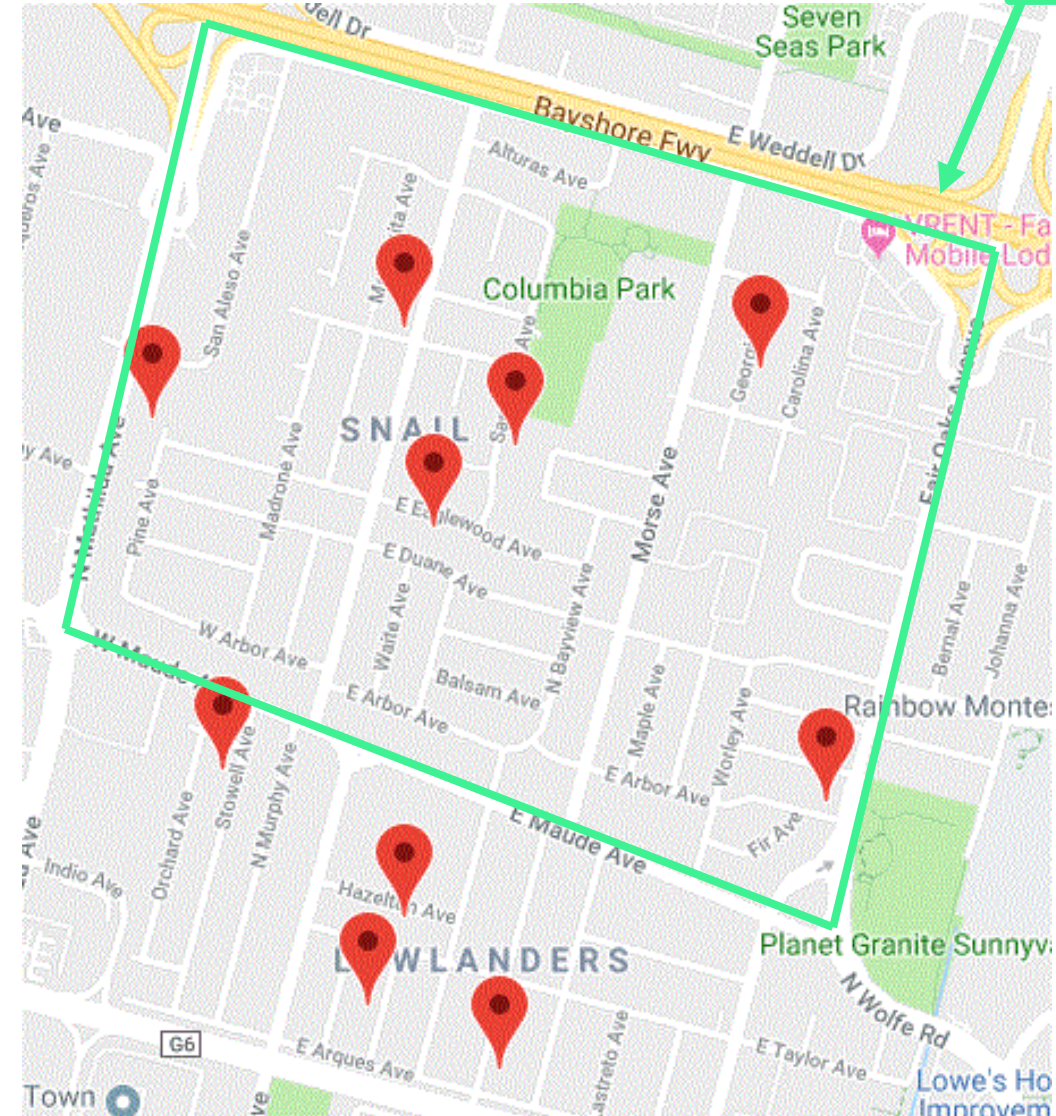
*August 16th, 2019 SNAIL NextDoor Map
with 1,555 members and growing*



Why Keep SNAIL Intact and Undivided?

Because SNAIL:

- 5. Has 6 Little Free Libraries
- 6. Is recognized by City Elected Officials as being most organized neighborhood
- 7. Has the largest and most popular NNO in the City
- 8. Shows consistently the greatest attendance record in the entire City of Sunnyvale



SNAIL NextDoor Map with August 6th, 2019 NNO Participants Streets (highlighted in red)

RTC 19-0675 - Updated Attachment 3



2019 NNO Attendees

- 253 Labels
- 280 Plates
- 325 Guestinated

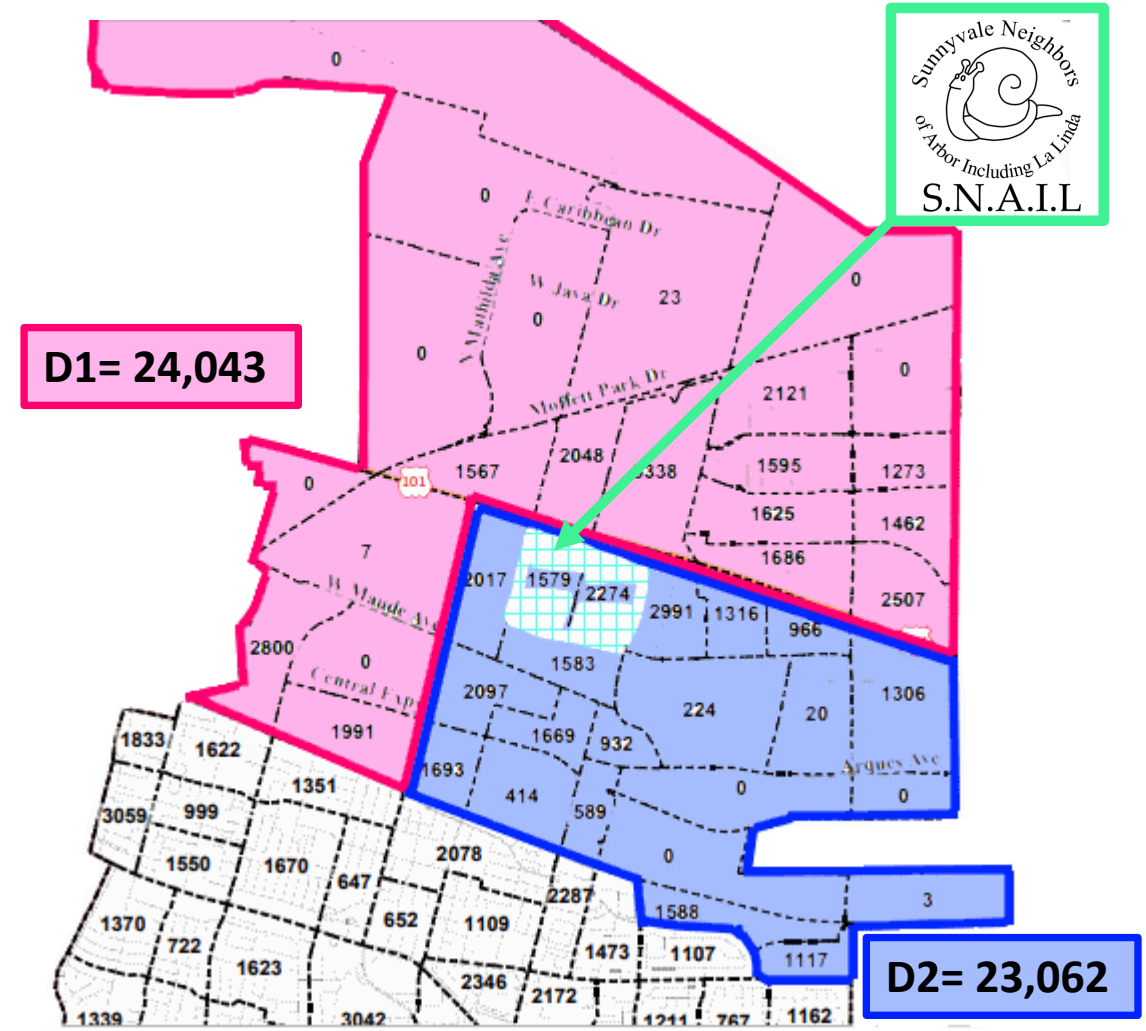
2019 NNO Neighborhoods Attendance

- 269 from SNAIL
- 2 from Playa Del Rey
- 2 from Lakewood Village
- 2 from Washington Park
- 1 from Heritage District
- 4 from Ponderosa Park
- 1 from Raynor Park



Keep SNAIL Intact and Undivided

SNAIL members urge you to keep their SNAIL neighborhood intact, undivided united and together.



RTC 19-0675 - Updated Attachment 3



File Edit View Favorites Tools Help



Sunnyvale Neighbors of Arbor including La Linda


[Home](#) | [Upcoming Events](#) | [Speakers](#) | [Newsletter Archive](#) | [Bylaws](#) | [Standing Rules](#) | [Contacts](#)

SNAIL - A Neighborhood Organization
In the heart of Sunnyvale, California



Welcome to SNAIL - a neighborhood organization comprised of nearly 1,500 homes located in the north-central part of Sunnyvale, between Hwy 101, Maude, Mathilda, and Fair Oaks Avenues.

Our purpose is to renew that "old-fashioned neighborhood" feeling in our area, to be better informed about the city services that are available to us, and to provide a "united voice" with which to express our concerns to the City of Sunnyvale.

Sunnyvale Neighbors of Arbor including La Linda

[Home](#) | [Upcoming Events](#) | [Speakers](#) | [Newsletter Archive](#) | [Bylaws](#) | [Standing Rules](#) | [Contacts](#)

SNAIL - A Neighborhood Organization In the heart of Sunnyvale, California



All documents in the archive prior to February 2003 are scanned from their paper originals and stored in greyscale JPG or PNG formats. Documents added since February 2003 are in PDF format and require Adobe Acrobat Reader or a compatible document viewer.

2019	Jan	Feb	Mar	Apr	May	Jun	Jul	Aug											
2018	Jan	Feb	Mar	Apr	May	Jun	Jul	Aug	Sep	Oct	Nov	Dec							
2017	Jan	Feb	Mar	Apr	May	Jun	Jul	Aug	Sep	Oct	Nov	Dec							
2016	Jan	Feb	Mar	Apr	May	Jun	Jul	Aug	Sep	Oct	Nov	Dec	and National Night Out Flyer	May	Jun	and Yard Sale/Dumpster Day Flyer	Jul	Aug	and National Night Out Flyer
2015	Jan	Feb	Mar	Apr	May	Jun	Jul	Aug	Sep	Oct	Nov	Dec	and National Night Out Flyer	May	Jun	and Yard Sale Flyer	Jul	Aug	and 20th Anniversary Party Flyer
2014	Jan	Feb	Mar	Apr	May	Jun	Jul	Aug	Sep	Oct	Nov	Dec	and National Night Out Flyer	May	Jun	and Yard Sale Flyer	Jul	Aug	and National Night Out Flyer
2013	Jan	Feb	Mar	Apr	May	Jun	Jul	Aug	Sep	Oct	Nov	Dec	and National Night Out Flyer	May	Jun	and Yard Sale Flyer	Jul	Aug	and National Night Out Flyer
2012	Jan	Feb	Mar	Apr	May	Jun	Jul	Aug	Sep	Oct	Nov	Dec	and National Night Out Flyer	May	Jun	and Yard Sale Flyer	Jul	Aug	and National Night Out Flyer
2011	Jan	Feb	Mar	Apr	May	Jun	Jul	Aug	Sep	Oct	Nov	Dec	and National Night Out Flyer	May	Jun	and Yard Sale Flyer	Jul	Aug	and National Night Out Flyer
2010	Jan	Feb	Mar	Apr	May	Jun	Jul	Aug	Sep	Oct	Nov	Dec	and National Night Out Flyer	May	Jun	and Yard Sale Flyer	Jul	Aug	and National Night Out Flyer
2009	Jan	Feb	Mar	Apr	May	Jun	Jul	Aug	Sep	Oct	Nov	Dec	and National Night Out Flyer	May	Jun	and Yard Sale Flyer	Jul	Aug	and National Night Out Flyer
2008	Jan	Feb	Mar	Apr	May	Jun	Jul	Aug	Sep	Oct	Nov	Dec	and National Night Out Flyer	May	Jun	and Yard Sale Flyer	Jul	Aug	and National Night Out Flyer
2007	Jan	Feb	Mar	Apr	May	Jun	Jul	Aug	Sep	Oct	Nov	Dec	and National Night Out Flyer	May	Jun	and Yard Sale Flyer	Jul	Aug	and National Night Out Flyer
2006	Jan	Feb	Mar	Apr	May	Jun	Jul	Aug	Sep	Oct	Nov	Dec	and National Night Out Flyer	May	Jun	and Yard Sale Flyer	Jul	Aug	and National Night Out Flyer
2005	Jan	Feb	Mar	Apr	May	Jun	Jul	Aug	Sep	Oct	Nov	Dec	and National Night Out Flyer	May	Jun	and Yard Sale Flyer	Jul	Aug	and National Night Out Flyer
2004	Jan	Feb	Mar	Apr	May	Jun	Jul	Aug	Sep	Oct	Nov	Dec	and National Night Out Flyer	May	Jun	and Yard Sale Flyer	Jul	Aug	and National Night Out Flyer
2003	Jan	Feb	Mar	Apr	May	Jun	Jul	Aug	Sep	Oct	Nov	Dec	and National Night Out Flyer	May	Jun	and Yard Sale Flyer	Jul	Aug	and National Night Out Flyer
2002	Jan	Feb	Mar	Apr	May	Jun	Jul	Aug	Sep	Oct	Nov	Dec	and National Night Out Flyer	May	Jun	and Yard Sale Flyer	Jul	Aug	and National Night Out Flyer
2001	Jan	Feb	Mar	Apr	May	Jun	Jul	Aug	Sep	Oct	Nov	Dec	and National Night Out Flyer	May	Jun	and Yard Sale Flyer	Jul	Aug	and National Night Out Flyer
2000	Jan	Feb	Mar	Apr	May	Jun	Jul	Aug	Sep	Oct	Nov	Dec	and National Night Out Flyer	May	Jun	and Yard Sale Flyer	Jul	Aug	and National Night Out Flyer
1999	Jan	Feb	Mar	Apr	May	Jun	Jul	Aug	Sep	Oct	Nov	Dec	and National Night Out Flyer	May	Jun	and Yard Sale Flyer	Jul	Aug	and National Night Out Flyer
1998	Jan	Feb	Mar	Apr	May	Jun	Jul	Aug	Sep	Oct	Nov	Dec	and National Night Out Flyer	May	Jun	and Yard Sale Flyer	Jul	Aug	and National Night Out Flyer
1997	Jan	Feb	Mar	Apr	May	Jun	Jul	Aug	Sep	Oct	Nov	Dec	and National Night Out Flyer	May	Jun	and Yard Sale Flyer	Jul	Aug	and National Night Out Flyer
1996	Jan	Feb	Mar	Apr	May	Jun	Jul	Aug	Sep	Oct	Nov	Dec	and National Night Out Flyer	May	Jun	and Yard Sale Flyer	Jul	Aug	and National Night Out Flyer
1995	Jan	Feb	Mar	Apr	May	Jun	Jul	Aug	Sep	Oct	Nov	Dec	and National Night Out Flyer	May	Jun	and Yard Sale Flyer	Jul	Aug	and National Night Out Flyer



Sunnyvale Neighbors of Arbor including La Linda

[Home](#) | [Upcoming Events](#) | [Speakers](#) | [Newsletter Archive](#) | [Bylaws](#) | [Standing Rules](#) | [Contacts](#)

SNAIL - A Neighborhood Organization In the heart of Sunnyvale, California



SNAIL Board and City of Sunnyvale Support Staff

Chair	Valérie Suarés	E. Eaglewood Ave.	408-390-3335	SNAILchair @ snail.org
Vice-chair	Diane Gleason	550 E. Arbor Ave.	650-353-1575	SNAILvicechair @ snail.org
Secretary	June Valenti	810 N. Bayview Ave.	408-497-0827	SNAILsecretary @ snail.org
Treasurer	Sharon McKnight	629 Madrone Ave.	408-745-0373	SNAILtreasurer @ snail.org
Newsletter Editor	Denise Perez	564 Manzanita Ave.	408-738-3252	SNAILeditor @ snail.org
Newsletter Distribution Coordinator	Nenuca Syquia	738 Georgia Ave.		syquia - nenuca @ gmail.com
Social Secretary	Bonnie Lloyd	802 Borregas Ave.	408-747-1949	
Neighborhood Preservation	Steve Frias		408-730-7613	SFrias @ sunnyvale.ca.gov
Neighborhood Resource Officer	Amy Pistor		408-730-7146	apistor @ sunnyvale.ca.gov



Sunnyvale Neighbors of Arbor including La Linda

[Home](#) | [Upcoming Events](#) | [Speakers](#) | [Newsletter Archive](#) | [Bylaws](#) | [Standing Rules](#) | [Contacts](#)

SNAIL - A Neighborhood Organization In the heart of Sunnyvale, California

