



# Sunnyvale Community Center Grounds Renovation Project Concept Design

Jennifer Ng, City Engineer  
January 10, 2023



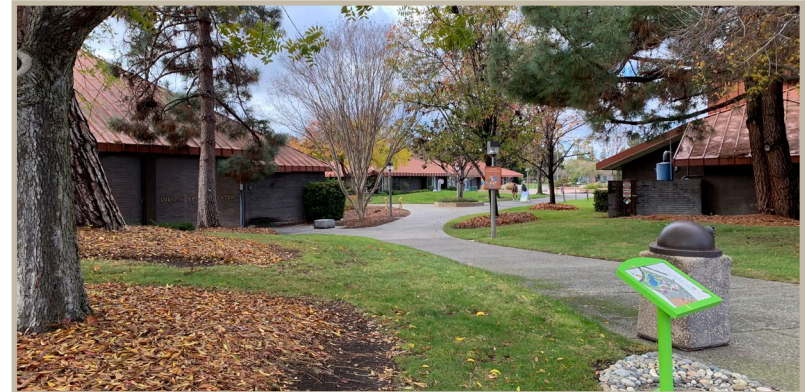
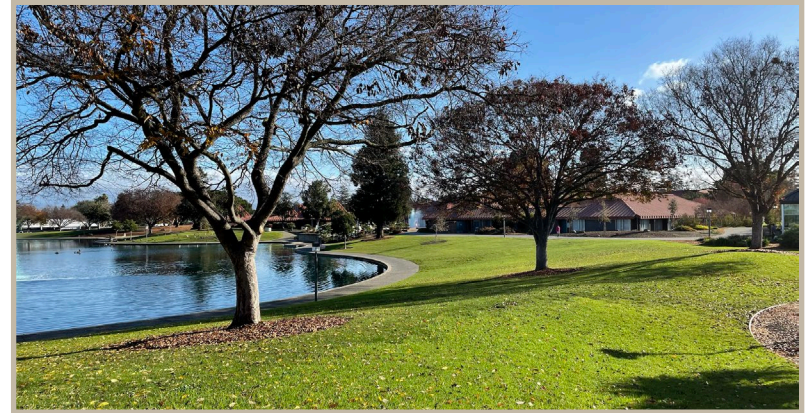
# Site Background

- Sunnyvale Community Center
  - ◆ 14+ acres, built in 1972
  - ◆ Senior Center added in 2003
  - ◆ Community Center Building Updates in 2019
- Project Area
  - ◆ Landscape & Paths: 403,036 sf (79%)
  - ◆ Lower Pond: 98,765 sf (19%)
  - ◆ Upper Fountain with Courtyards: 9,700 sf (2%)



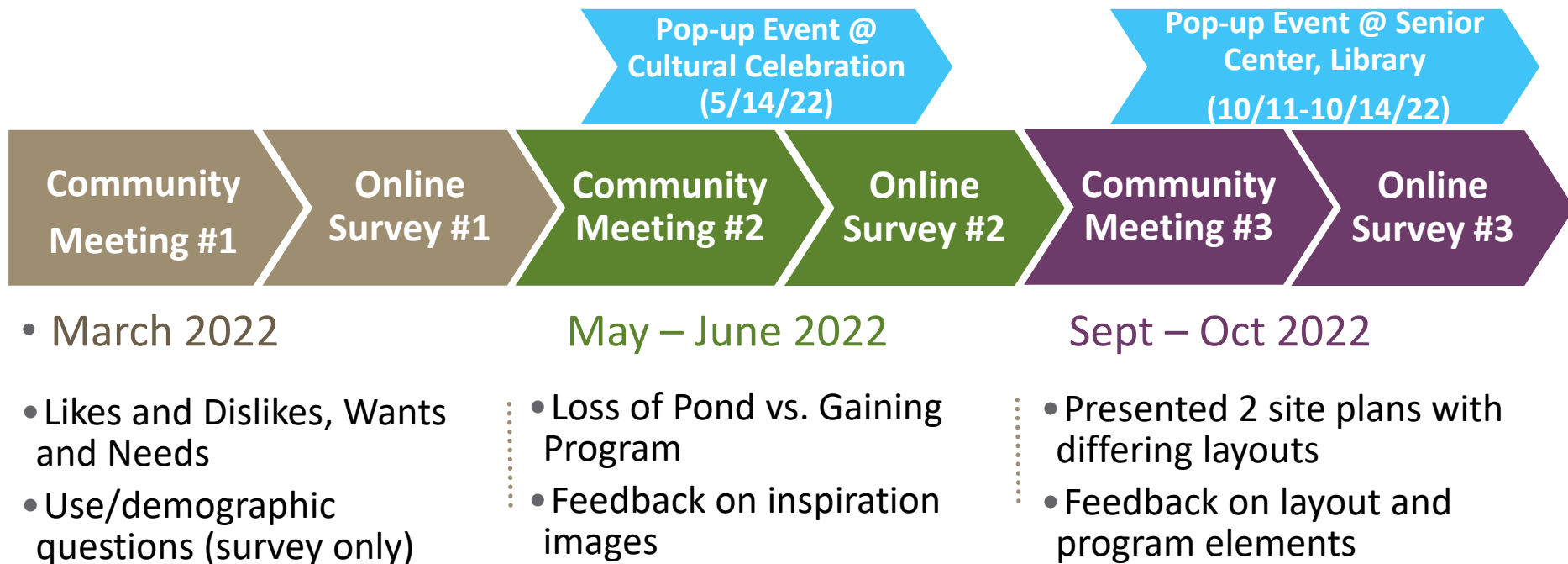
# Project Scope and Goals

- Approved Capital Improvement Project
  - ◆ Includes renovation of grounds only, not the buildings, parking lots, or orchard
- Design Goals:
  - ◆ Enhance recreational opportunity
  - ◆ Increase attractiveness, including geese droppings issue
  - ◆ Reduce the use of utilities





# Timeline – Community Input Process





# Community Meeting #1: likes/dislikes, wants/needs



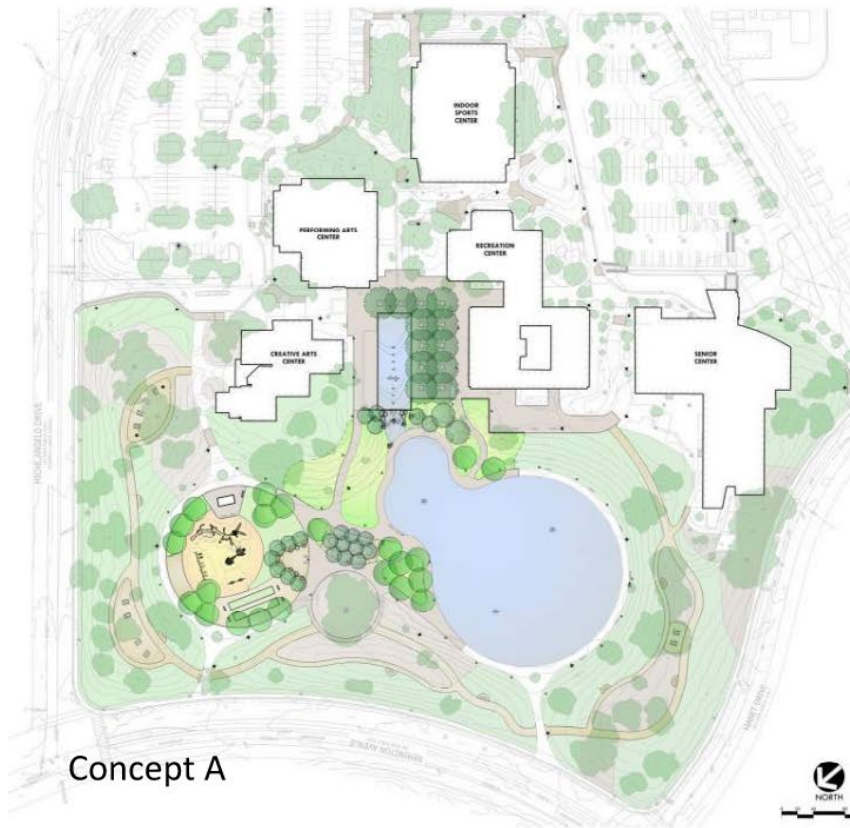
## Top Five wants

- Walking Paths
- Playground with Play Structures
- Group Picnic Areas
- Event Space/Amphitheater
- Restrooms

**Top Dislike –** Geese droppings



# Community Meeting #3: two concepts presented

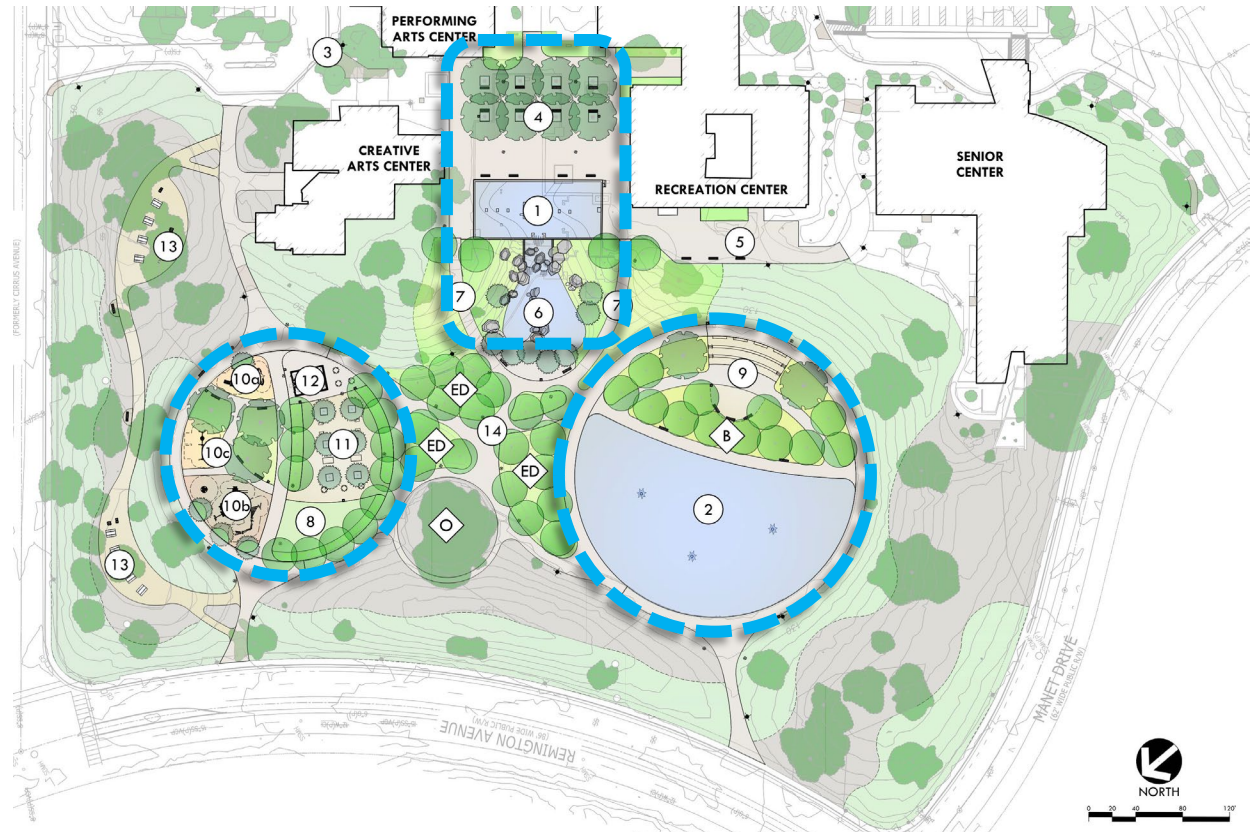




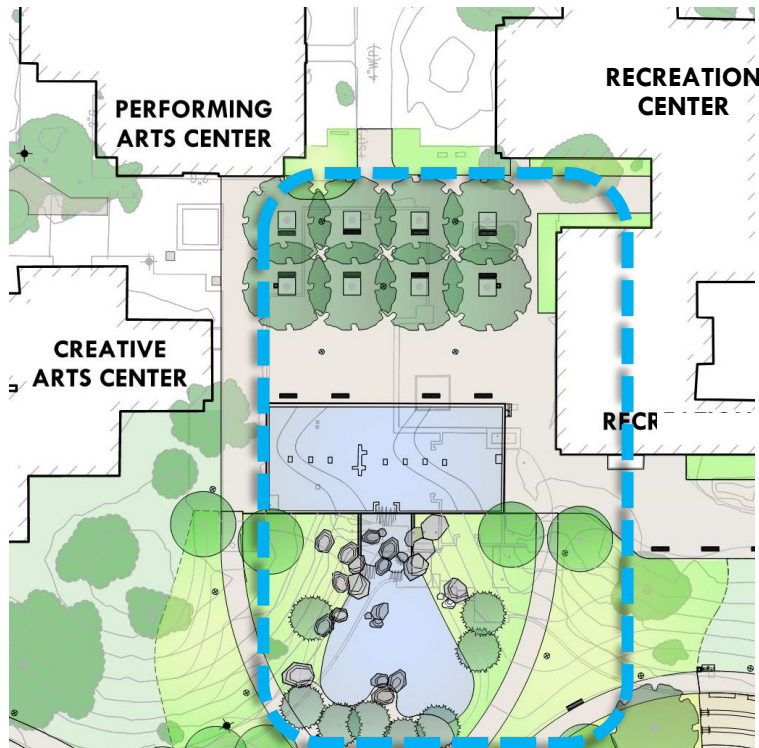
# Preferred Concept Plan

## LEGEND:

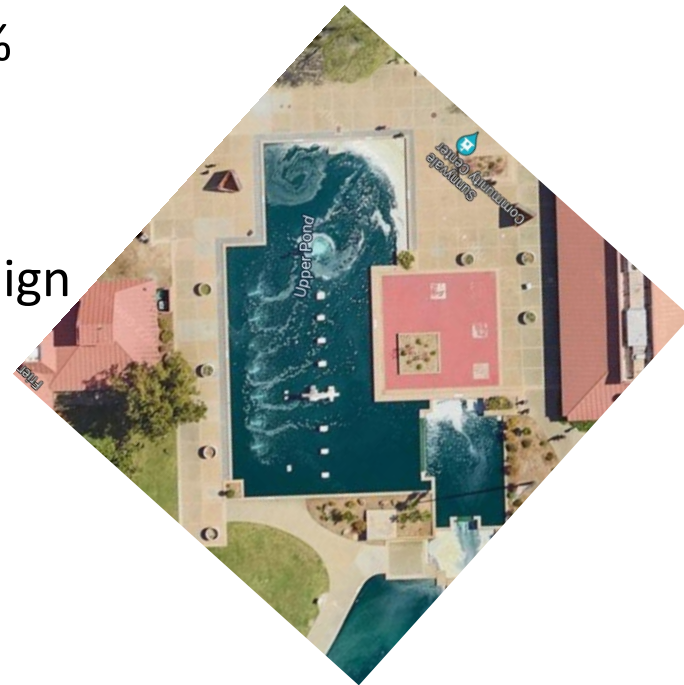
- ① UPPER FOUNTAIN (REDUCED BY 50%)  
W/ EXISTING MEMORIAL SCULPTURE
- ② LOWER POND (REDUCED BY 60%)
- ③ SITE ADA ACCESSIBILITY IMPROVEMENTS AT  
EXISTING PAVING AREAS
- ④ UPPER PLAZA W/ GRID OF SHADE TREES
- ⑤ LOWER PLAZA OVERLOOK W/ BENCHES
- ⑥ FOUNTAIN OUTFALL INTO LOWER STREAM BED W/  
BOULDERS AND CASCADING WATER
- ⑦ SLOPED WALK DOWN TO LOWER POND AREA
- ⑧ SYNTHETIC TURF LAWN AREA
- ⑨ INFORMAL SEATING/AMPHITHEATER STYLE SPACE  
(110 CAPACITY)
- ⑩a PLAYGROUND AREA "TOT LOT" (AGES 2-5)
- ⑩b PLAYGROUND AREA (AGES 5-12)
- ⑩c PLAYGROUND SWINGS
- ⑪ RECREATION AREA WITH CORNHOLE, TABLE TENNIS,  
AND CHESS/CHECKERS TABLES
- ⑫ RESTROOM/MECHANICAL EQUIPMENT BUILDING
- ⑬ BERM TRAIL WITH PICNIC AREAS
- ⑭ INTERNAL WALKWAYS/  
POSSIBLE ART DISPLAY AREA
- ED EDUCATIONAL PLANTING AREA/ARBORETUM
- B BIORETENTION AREA
- O EXISTING HERITAGE OAK



# Preferred Site Plan – Upper Fountain and Lower Stream Bed

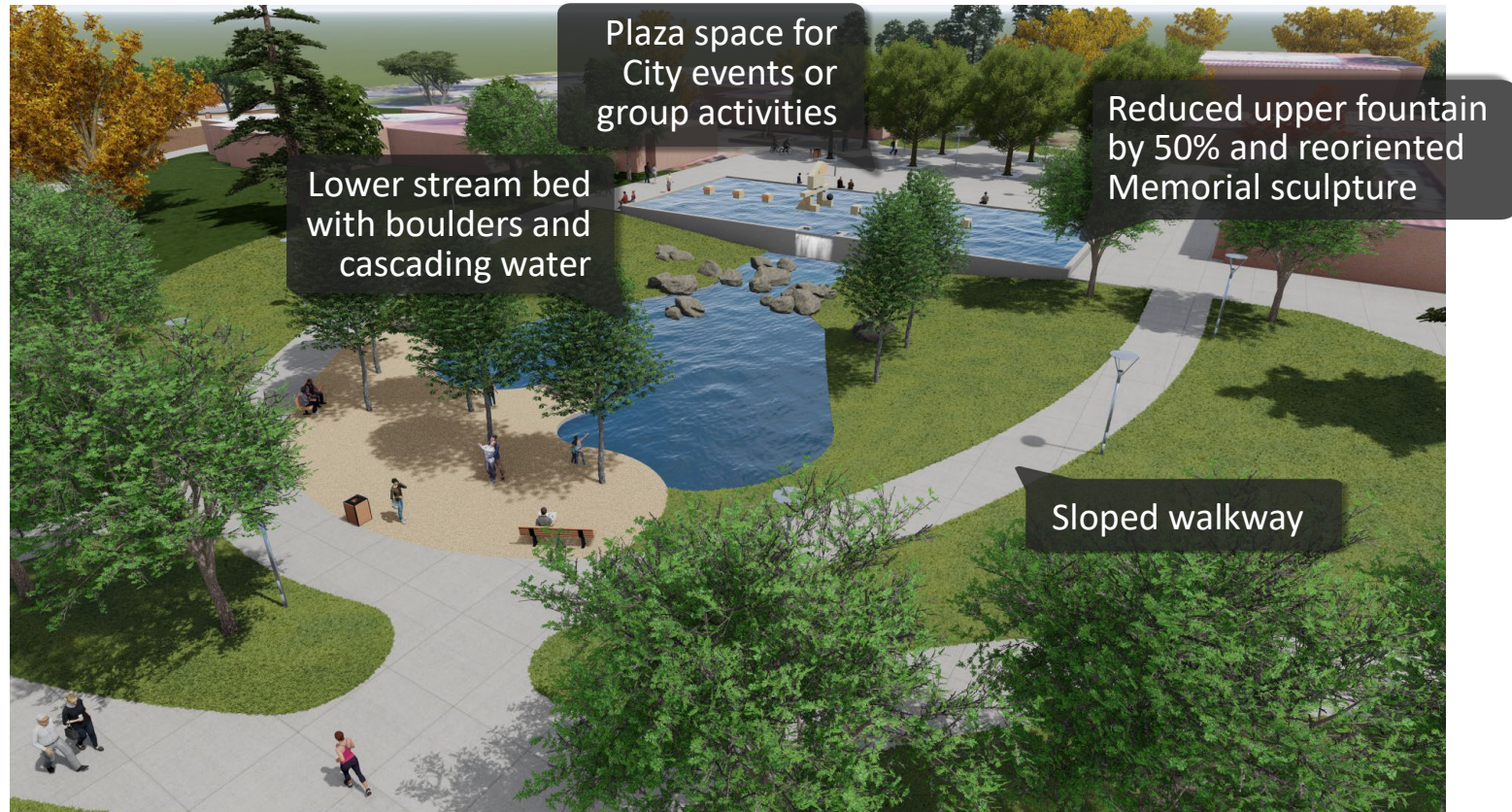


- Upper Fountain – reduced by 50%
- Memorial Sculpture to be reoriented to align with fountain
- Waterfall into lower stream bed



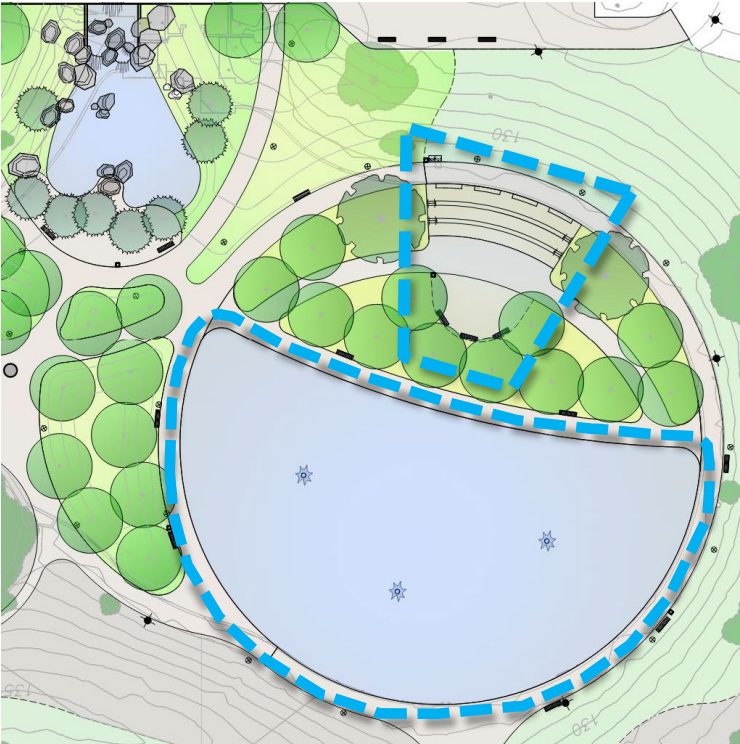


# Upper Fountain and Lower Stream Bed – Perspective





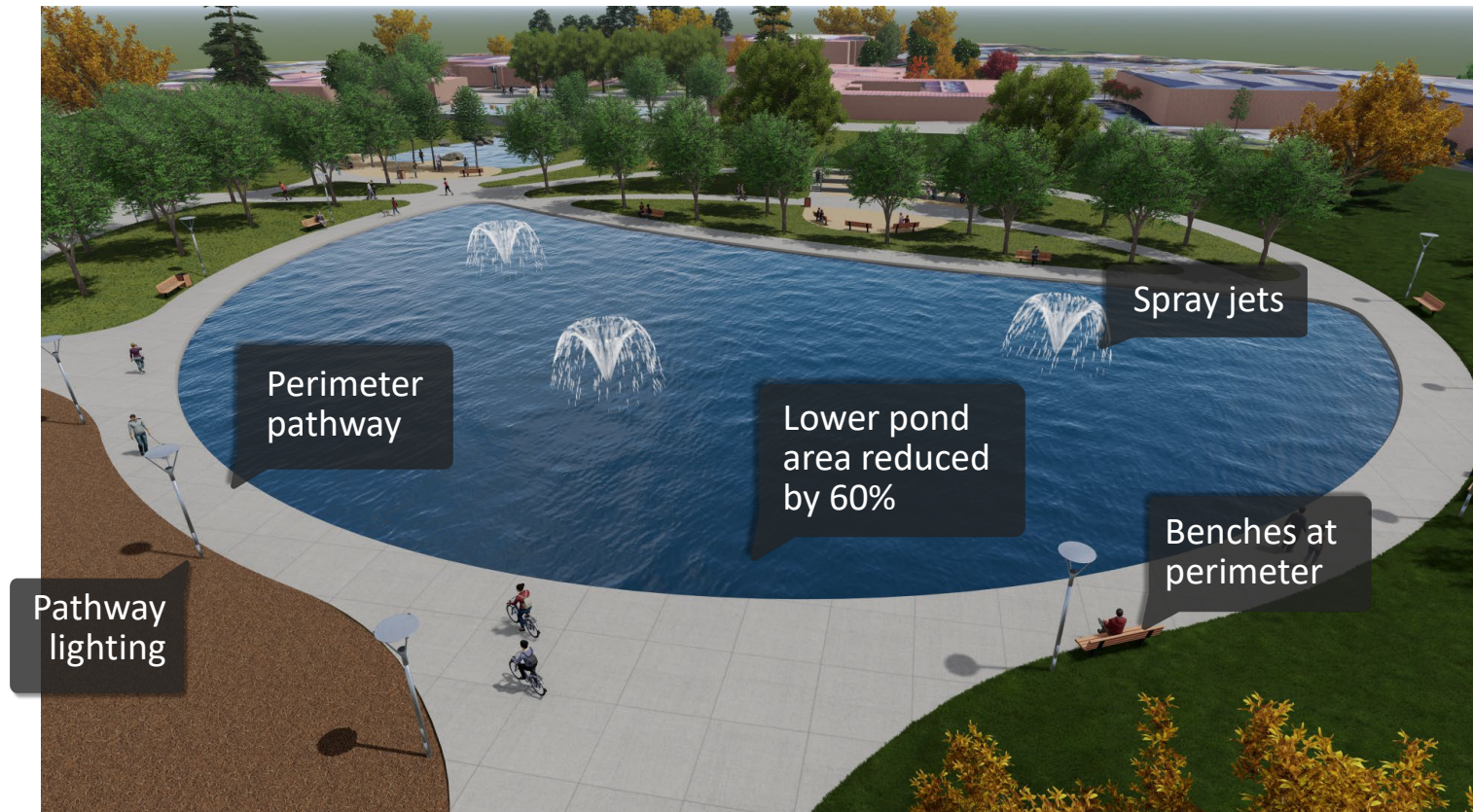
# Preferred Site Plan – Lower Pond and Amphitheater seating



- Lower Pond – reduced by 60%
- Amphitheater style seating



# Lower Pond – Perspective



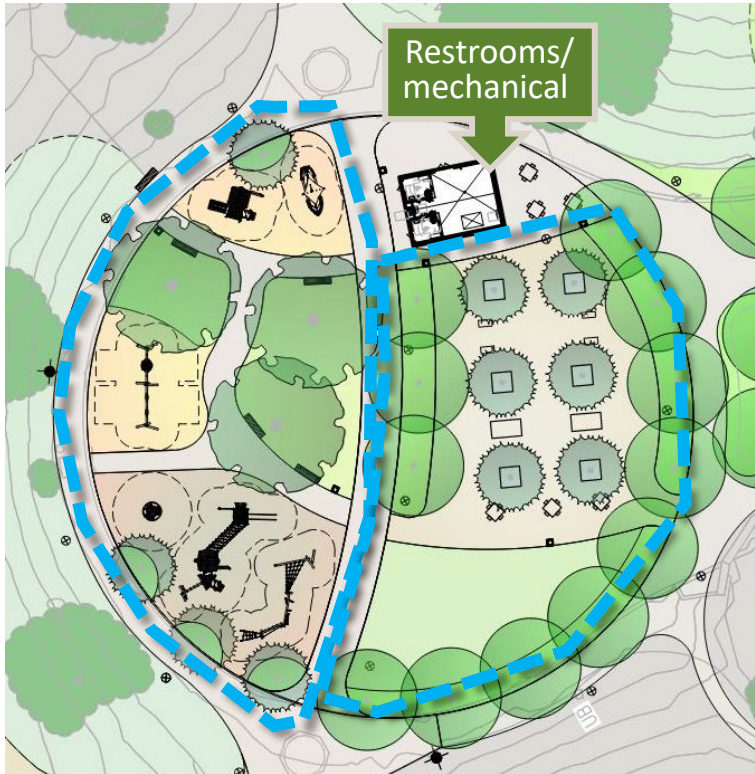


# Informal Seating/Amphitheater Style Space – Perspective





# Playground Area and Recreation Space



- Playground area
  - ◆ Separate play areas for ages 2-5 and 5-12
  - ◆ Combination of resilient surfacing and engineered wood fiber
  - ◆ Shade trees and planting for buffer
- Recreation Space
  - ◆ Cornhole boards, Ping Pong, and chess/checkers game tables
  - ◆ Grid of trees for shade
  - ◆ Small flexible space with synthetic turf for unprogrammed play

# Playground Area – School-aged Children (ages 5-12)





# Playground Area – Tot Lot (ages 2-5)





# Passive Recreation Area – Perspective



# Walking Paths / Circulation: #1 request/want

## LEGEND:

- ■ ■ OUTER PATHWAY (.66 MILES)
- ■ ■ LOWER PATHWAY (.30 MILES)
- ■ ■ LOWER PATHWAY W/ BERM TRAIL (.36 MILES)
- ■ ■ LOWER POND PERIMETER PATHWAY (.14 MILES)



# Berm Trail and Picnic Areas



- Berm trail along the northern berm
  - ◆ Utilizes existing tree cover
  - ◆ Connects two picnic areas
  - ◆ Includes two shaded, quiet seating areas overlooking the active space




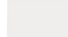



# Berm Trail and Picnic Areas – Perspective



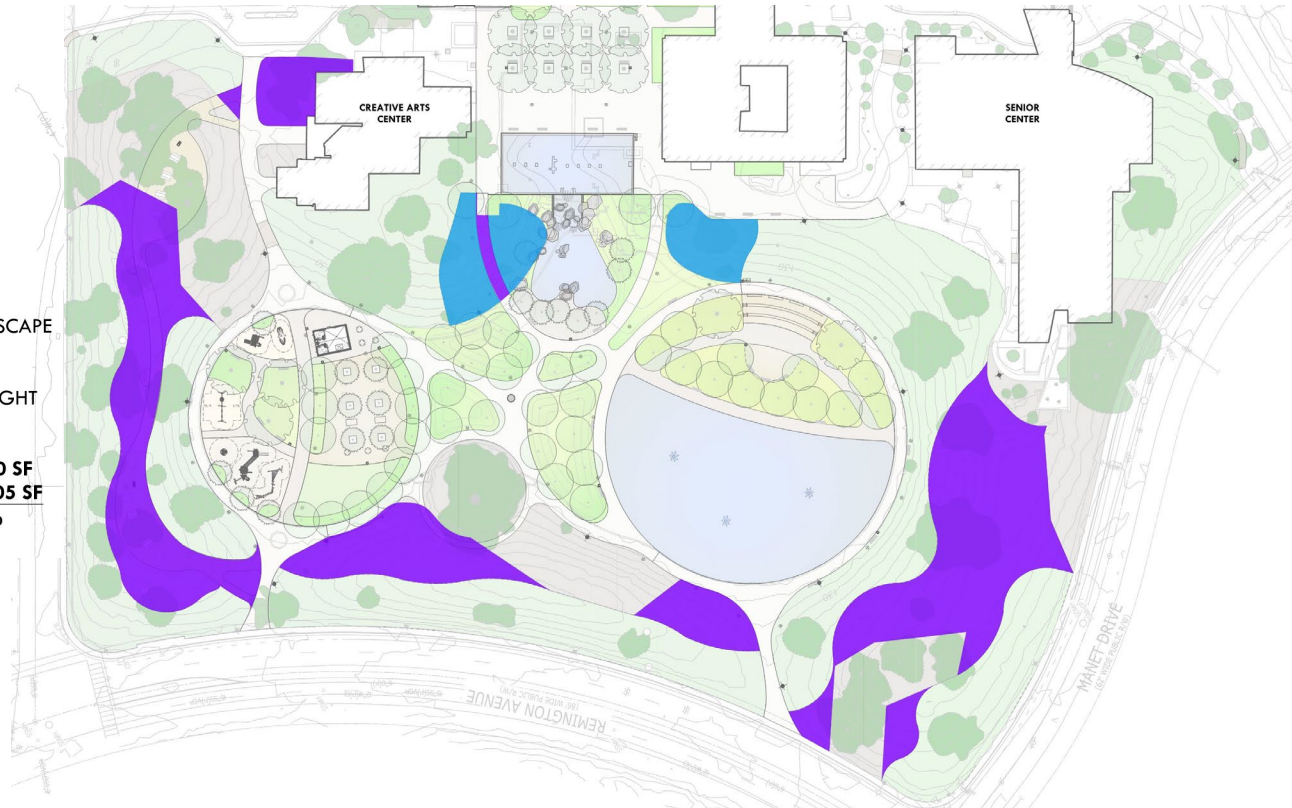
# Design Goal: Reduce the Use of Utilities - Overall Reduction of Turf Areas

## LEGEND:

### LANDSCAPE ELEMENTS:

-  NATIVE/DROUGHT TOLERANT SHRUB AREA
-  EXISTING MULCH AREA TO REMAIN
-  EXISTING LAWN AREA TO REMAIN (117,825 SF)
-  TURF AREAS TO BE CONVERTED TO MULCH/HARDSCAPE (55,100 SF)
-  TURF AREAS TO BE CONVERTED TO NATIVE/DROUGHT TOLERANT SHRUB AREA (8,900 SF)

<b>A. TOTAL TURF REDUCTION:</b>	<b>64,000 SF</b>
<b>B. TOTAL EXISTING TURF:</b>	<b>184,805 SF</b>
<b>PERCENT REDUCTION (A/B)</b>	<b>34.6%</b>





# Addressing Goose Population and Droppings



## Attractions for Geese:

- Clipped lawn area for foraging
- Water for landing
- Direct access between lawn and pond





## Deterrents implemented in Design:

- Reduced total lawn area
- Reduced total pond area
- Reduced total amount of lawn/pond interface
- Increased physical barriers between lawn/pond

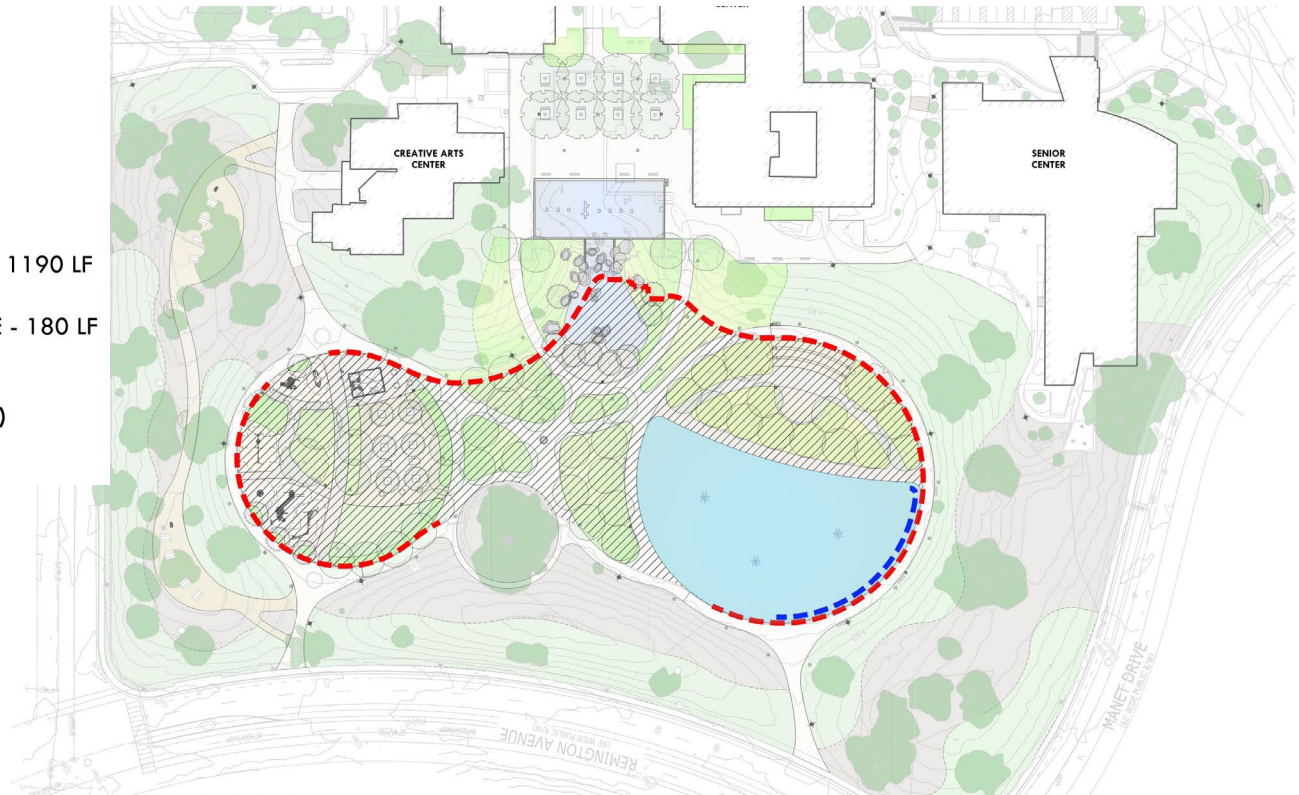


# Geese Mitigation – Reduction of Pond/Lawn Interface

## LEGEND:

-  EXISTING POND
-  PROPOSED REDUCED POND
-  EXISTING LAWN/POND INTERFACE - 1190 LF
-  PROPOSED LAWN/POND INTERFACE - 180 LF

**TOTAL REDUCTION: 1010 LF (85%)**



# Project Design Goals - Achieved

## ◆ Enhancing Recreational Opportunity

- ✓ Expanded programmed use areas
- ✓ Incorporated outdoor recreational areas

## ◆ Increasing Attractiveness

- ✓ Renovation of water features
- ✓ Landscape improvements
- ✓ Updates to site furnishings & finishes

## ◆ Reducing Use of Utilities

- ✓ Reduced areas requiring irrigation
- ✓ Reduction/modernization of water feature
- ✓ Upgrades to parking lot and pedestrian lighting



# Next Steps

- Design, Permitting, Contract Docs
  - Late 2023 completion
- Bidding
  - Early 2024
- Construction
  - Spring 2024 – Fall 2025





# Staff Recommendation

---

**Alternative 1:** Approve the Preferred Concept Plan for the Community Center Grounds Renovation Project as shown on Attachment 6 of the report and Find the Action is exempt from the California Environmental Quality Act (CEQA) pursuant to CEQA Guidelines section 15262.