



Sunnyvale

The Great Box Cover-up! (Phase 2)

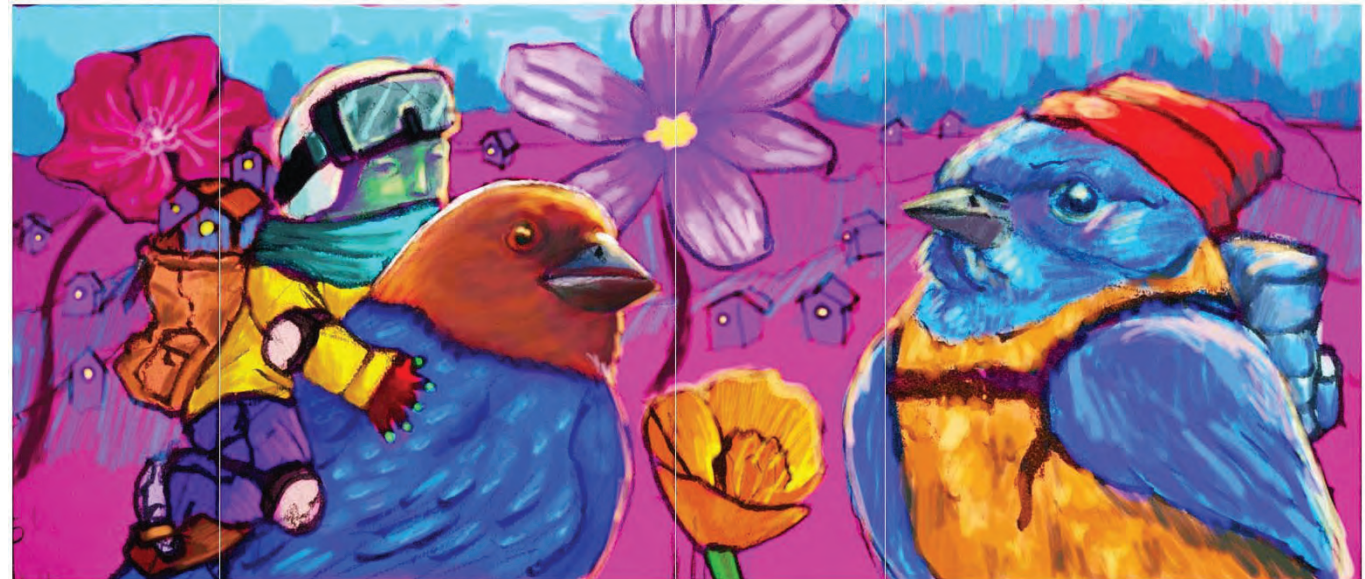
Artist Proposals and Past Works



Pablo Arroyo

Proposal #1 (Sunnyvale Saratoga Road @ Remington Drive)

For this box I wanted something as vibrant and colorful as the nature found in Sunnyvale. The color palette is inspired by the flowers native to Sunnyvale, which are also included in the concept: the Orange Poppy, the Checker Bloom, and the Blue-eyed Grass. The Brown Headed Cowbird and Western Bluebird are also local birds, symbols of free spirits. The rider on the cowbird's back has a backpack full of houses, to show how integrated the relationship between the community and nature are.



Pablo Arroyo Past Works



Pablo Arroyo Past Works

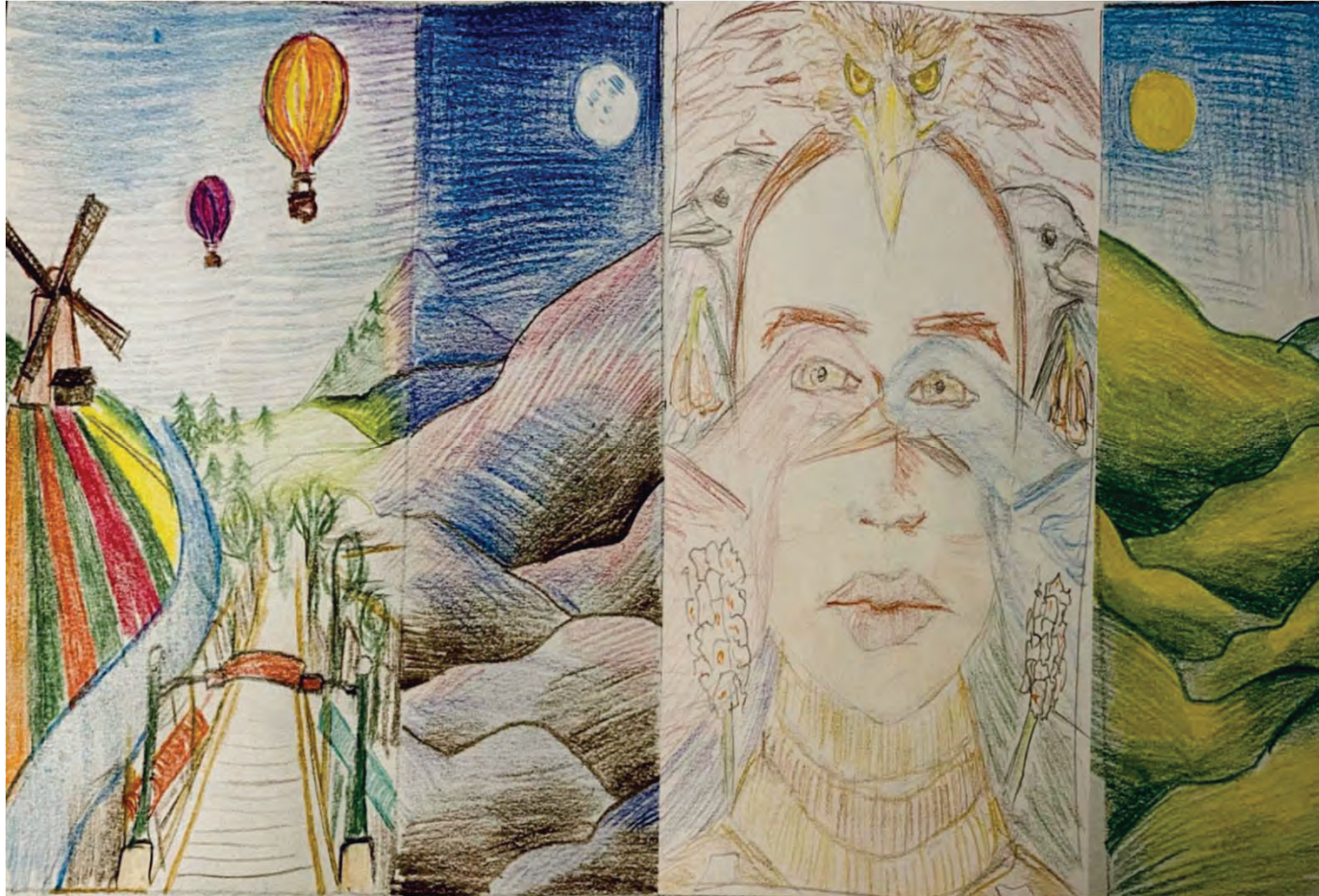


Pablo Arroyo Past Works



ArtCircle Studio

Proposal #2 (Fair Oaks Avenue and Kifer Road)



The bounding hills and mountains showcase the beautiful valley we live in, with night and day combined to reflect the gorgeous full lifetime of our experience here.

Everyone in this community is busy climbing their own mountains of success. We wish to capture this resilient and adventurous spirit of the people of Sunnyvale through these soaring peaks.

Cascading from the hills, this panel of flower fields, orchards and the entrance to Murphy St. represents the transition of Sunnyvale as a town originally known for its agriculture/orchards, to the quaint, residential, and commercial area it is today. The balloons in the sky are representative of the heights and dreams that the people all strive for in this city of destiny.

ArtCircle Studio Past Works (ArtCircle Students)



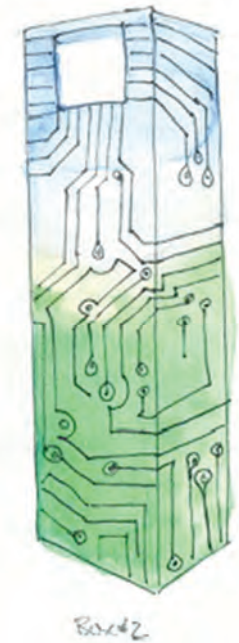
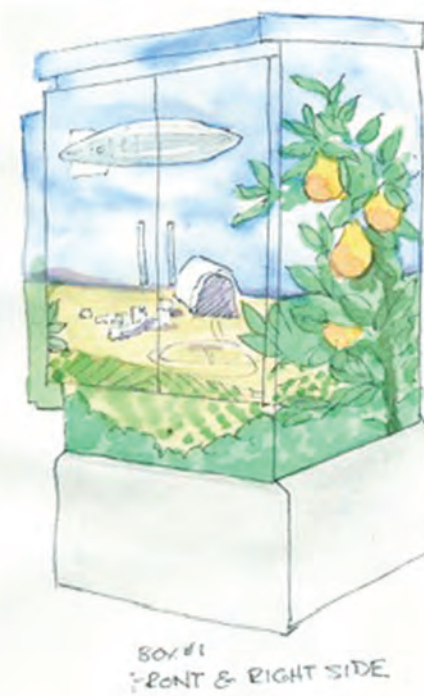
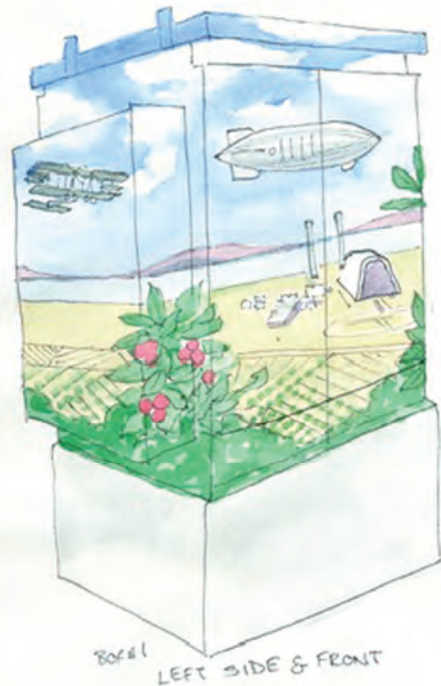
ArtCircle Studio

Past Works (Lead Artist, Deepti Nanawati)



Kristen Calderon

Proposal #3 (Mathilda Avenue @ Innovation Way)



I will be painting in acrylic paint on the boxes, so the final design will be bolder and more detailed. Because of the proximity to Moffett Field and the aerospace and tech industries, I have chosen to highlight their histories in conjunction with the rich history of agriculture in Sunnyvale.

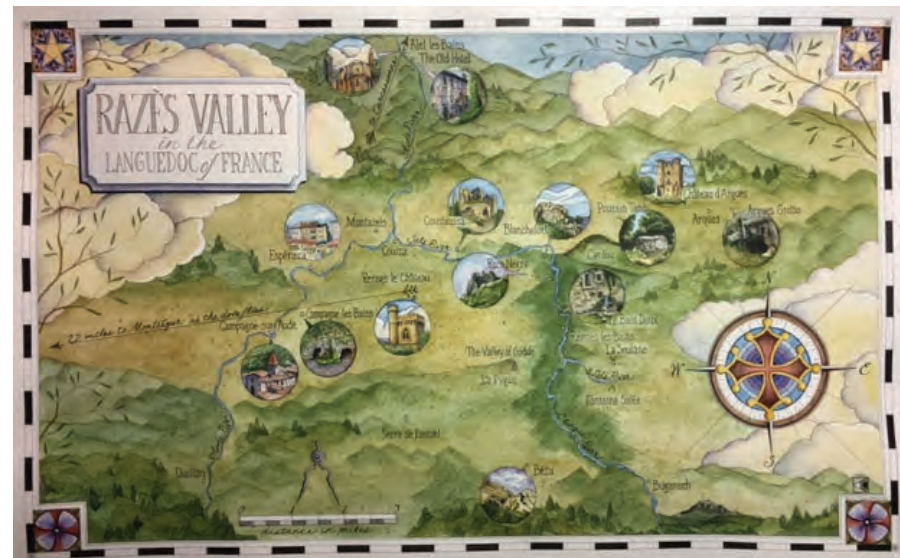
Each box will be mostly blues and greens...from the bright blue sky with puffy bright white clouds, the purple blue of the surrounding hills, the blue of the bay to the greens of the fruit trees and orchards. The front panel of box #1 will feature the USS Macon flying over Moffett Field. The right-side panel will be a pear tree which will have a few leaves and branches which will wrap around the front and back. The left side panel will have the Army plane flown in 1916 and a bit of a cherry tree which will also wrap around the front. The back will feature a Navy P3 and Moffett Field landing strips. Box #2 will follow the same horizontal divisions of sky/ clouds, hills, bay, orchards. Overlaid on the landscape will be a circuit pattern...tying this box in to the tech industry. The two boxes will have the continuity of the sky and landscape, but one will feature aviation, the other tech. I am uncertain whether the cement box on which box #1 should also be painted, please advise. It can easily be incorporated into the green landscape at the bottom of my design if so.

Kristen Calderon Past Works



Kristen Calderon

Past Works



Greg Cheung

Proposal #4 (Mathilda Avenue @ Maude Avenue)

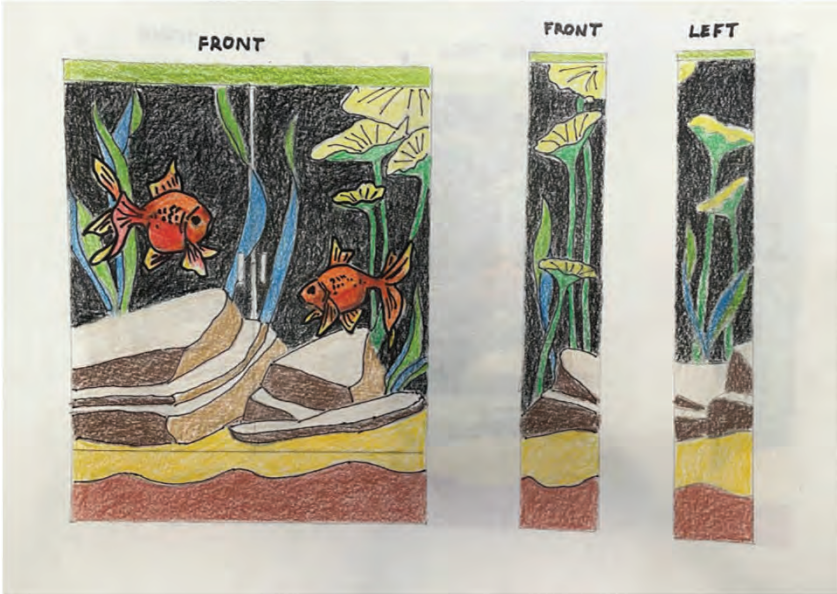
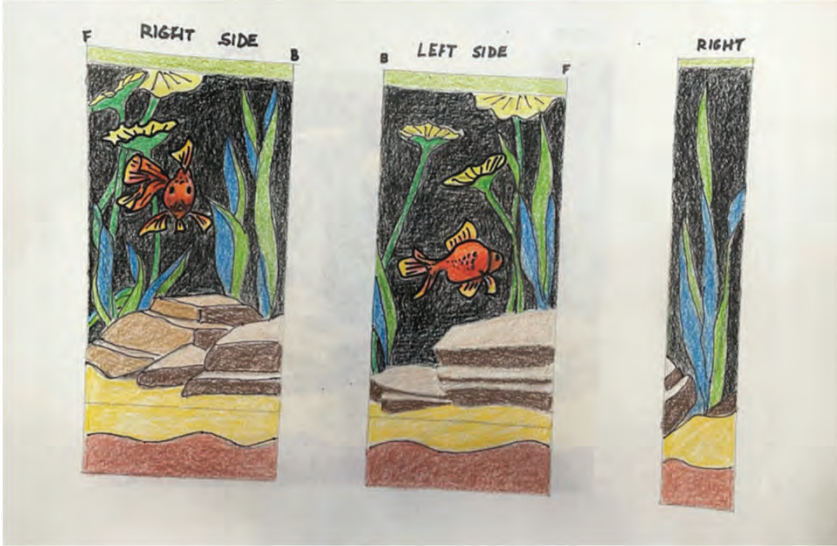
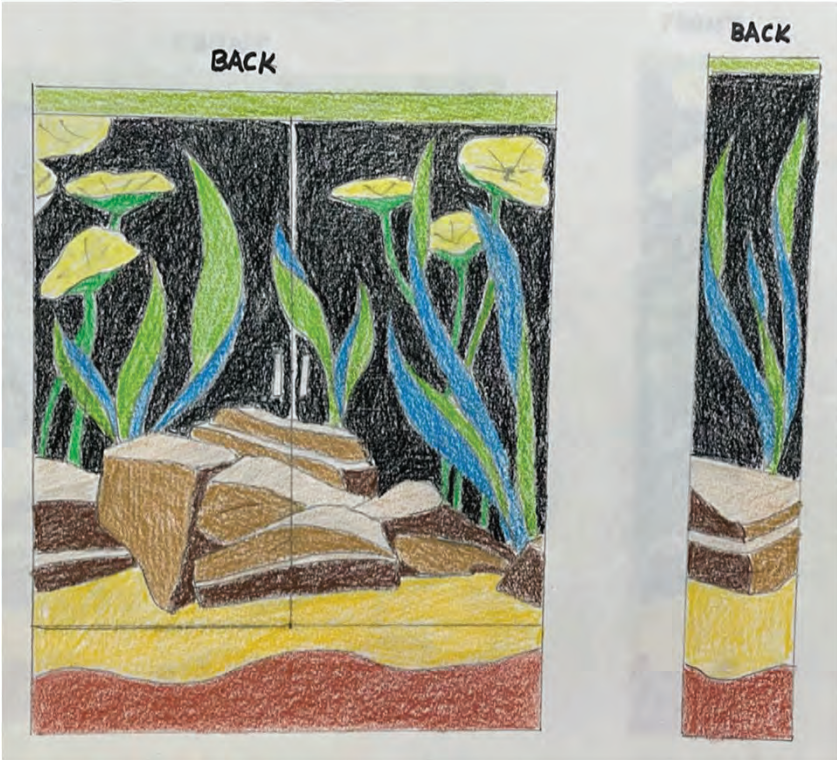
The design represents an aquarium housing fantail goldfish. Chinese tradition celebrates the fish as a symbol for perseverance, abundance and success. In addition, goldfish indicates abundant wealth. These are also qualities describing Sunnyvale, a center for high technology with a history of success and accumulation of wealth.

The utility box site is in front of an Apple office building.

This Chinese theme hopefully will contribute to the goal of including diversity in the project.



Greg Cheung Proposal #4 (Mathilda Avenue @ Maude Avenue)



Greg Cheung Past Works



Greg Cheung Past Works



Jemal Diamond

Proposal #5 (Mathilda Avenue @ Sunnyvale Avenue/Talisman)



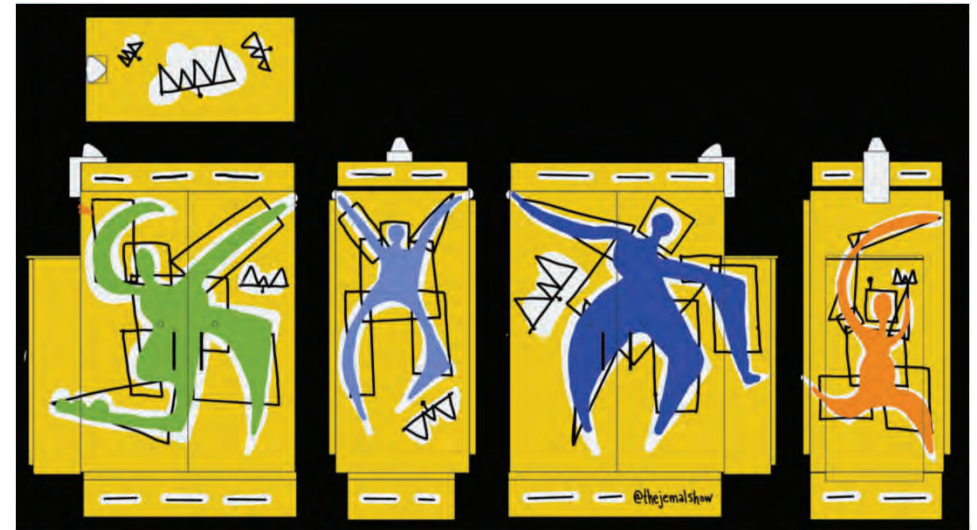
My design consists of playful, colorful figures around each side of all three boxes. With a bright yellow background, there are colorful large bold exaggerated figures in green, blue, orange, and dark blue. They are depicted with joyful movement, dancing, jumping, stretching, and reaching out for each other, connected in community.

Nestled near the figures and on the top of each box are clouds, suggesting the beautiful Sunnyvale skies while also indicating cloud technology made popular by the tech industry of Sunnyvale and Silicon Valley. The angular black lines beneath each figure at once may indicate radar depictions of figures in autonomous and smart car technology and also the preoccupation we have with our own bodies.

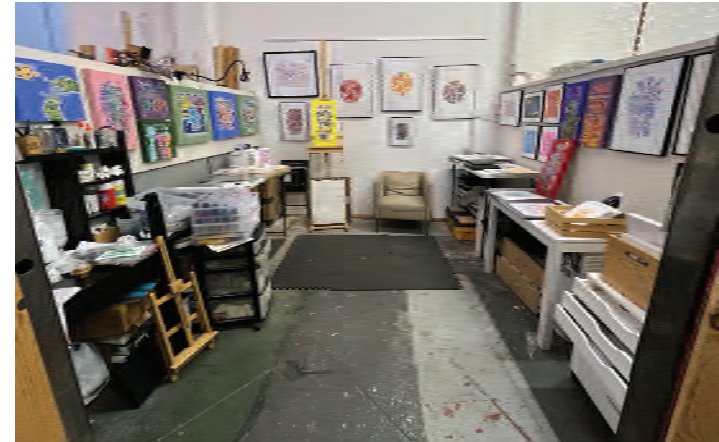
The design presents a joyful, active connection between ourselves and the technology around us and also the connection between the diverse people of Sunnyvale, and all who pass by.

Jemal Diamond

Proposal #5 (Mathilda Avenue @ Sunnyvale Avenue/Talisman)



Jemal Diamond Past Works



Jemal Diamond Past Works



April Gee

Proposal #6 (Arques Avenue @ Oakmead Parkway)

Proposal : Honoring the diversity of Sunnyvale, and the technological innovations around.
HARMONIA THE WISE is a gentle, welcoming, character who balances technology in harmony with nature, in a future that celebrates the most beautiful aspects of all cultures.
She will smile on all who pass her to remind them of what is possible.
Arques Ave @ Oakmead



For My Artbox, I would like to develop a character called Harmonia the Wise (imagine a green character in place of the green heart on the main face of this box). I would like to incorporate patterns in her dress from different cultures, so I will need more time to develop her properly. But she will be green and happy and with a warm and loving face, embracing the Earth in her song.

On The Bus Stop Facing Side, I will feature a sweet Sperm Whale, and music notation for a melody I'd written about Earth being our Home. Sperm whales had a very hard time surviving in the past. Our industrial revolution used their special oil in every cog and wheel. Thankfully, we are moving into a smarter and kinder future, and I wish to honor them subtly, and remind people that they are the loudest singers on the planet (233 decible voices!).

The Top will feature a monarch butterfly seemingly protected by circuitry, a symbol of transformation and in reality, a treasured pollinator that helps circulate life.

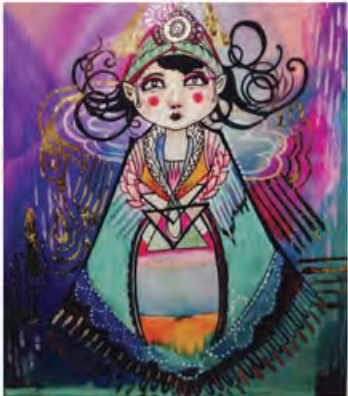
The Traffic Corner will feature what I call a rational eye, an earth centered jewel-like pupil set in the hearts of mankind and plugged into technology in an organic way. I would like to make the circuitry happen in metallic gold. I have chosen to take on large focal elements in this art box, so that it can be observed from a distance. Most people will catch it while driving past it.

The back end will feature a melody in gold on purple for any who venture to try it out. I will also include symbols from nature there under the melody lines, in hopes that they spark interest in anyone waiting for the bus.

April Gee Past Works

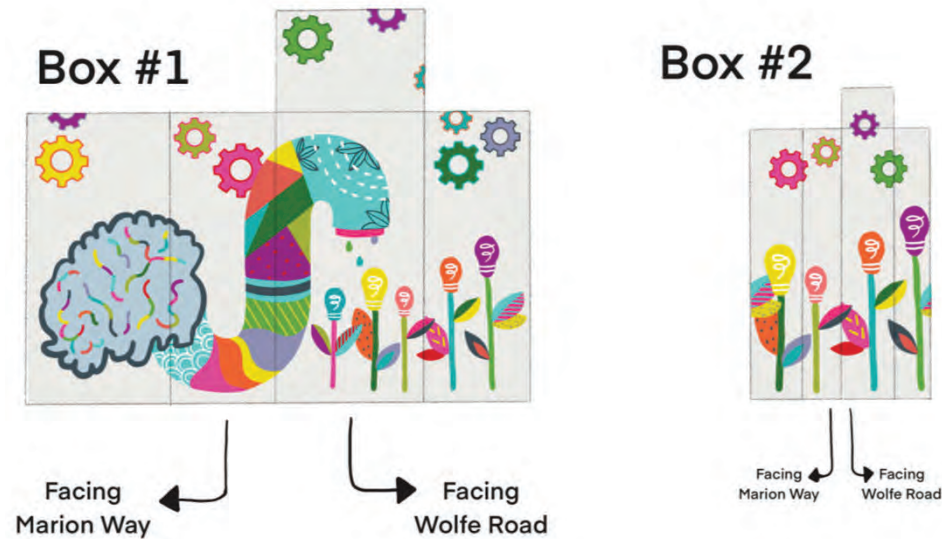


April Gee Past Works



Alexandra Muddle

Proposal #7 (Wolfe Road @ Marion Way)



I considered various subject matters for my utility box design. Ultimately though, I felt that I really wanted to create an art piece that speaks to the amazing innovation and creativity represented in Sunnyvale. Located in the heart of Silicon Valley, Sunnyvale is home to many big tech companies and their employees. Not to mention, Apple headquarters and visitor center (albeit located technically in Cupertino), is only a few blocks down the road from the location of this utility box. I also think my design encompasses Sunnyvale’s brand essence of: “bold, sustainable innovation.”

The design itself represents a brain that is fueling great ideas: the water source that helps the “flowers” grow. The design is also colorful and bold; something that will stand out and clearly communicate innovation and creativity, whether walking, cycling or driving by.

Box Number 2 per the design proposal has the same plants/flowers as Box Number 1. However, the actual utility box will have different flowers and gears. The flowers and gears for Box Number 2 will be created in the same style and color scheme as the flowers and gears on Box Number 1. Box Number 2 will be a continuation of flowers and gears, as dictated on Box Number 1. I may edit the brain a bit just to show a little division of lobes and cerebellum by rearranging some of the colorful, squiggly lines. I also may edit some of the patterns, or slightly rearrange the gears. Ultimately though, the design proposal is a good representation of what the final mural will look like. The color scheme will also remain the same (or close to it).

Alexandra Muddle Past Works

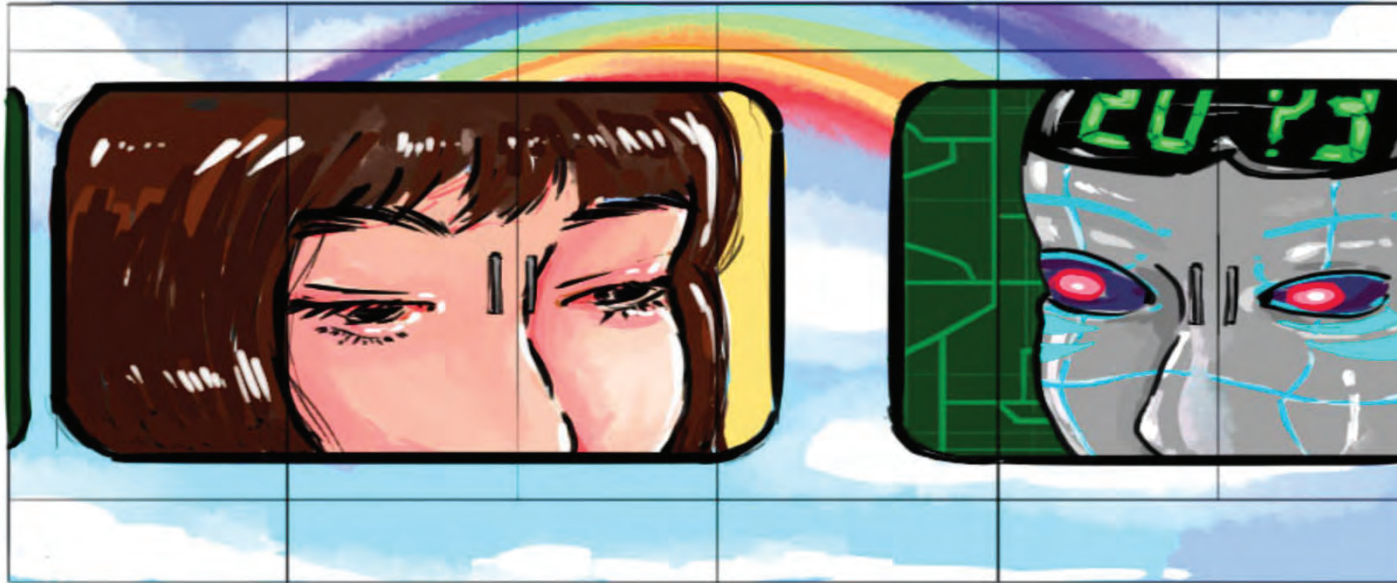


Alexandra Muddle Past Works



Yen Nguyen

Proposal #8 (Caribbean Drive @ Crossman Avenue)



I have had opportunities to visit different cities in Santa Clara county, as well as to the area around Crossman-Caribbean intersection many times in the past years. The city of Sunnyvale as well as its neighbor cities such as Milpitas, Saratoga, San Jose etc. are so beautiful thanks to the growth of green and peaceful weather. Together with that, I have also noticed the growth of high buildings and technology that are happening in the area recently. I am proud to witness and be a resident in such a beautiful and advanced county. However, somehow there are questions that keep appearing in my head: will the world be completely controlled by technologies and robots? Is it a good thing? Does it do more harm than help?

Therefore, I came up with a design which carries my message to viewers. My design has: a window with a human face next to a window with a robot face, with a blue sky and a colorful rainbow in the background. Neither of them is looking at each other, however, “facing” each other emotionally. The human is looking down, does not seem very happy, rather having so much thought in its head. On the other side, the robot seems emotionless and staring at blank space. I hope that no matter how advanced we are, we will not forget that we are still human, and put the human’s heart into our inventions. Technology should help us to have a better life, not to replace the human race. I believe that after all, both us humans and robots would love to co-exist peacefully under the same sky.

Yen Nguyen Past Works



Yen Nguyen Past Works



Linda Nystrom

Proposal #9 (Mathilda Avenue @ Tennis Center)



I am pleased to submit the conceptual painting for the 2 utility boxes located on Mathilda across from Las Palmas tennis courts. "Baylands on a Box": consists of shoreline birds playing tennis and birds either watching or stealing balls in the wetland area.

Box 1:
Two pelicans with rackets are hitting the tennis balls, while one pelican holds a basket of balls in its beak. Seagulls are flying in the air to steal the balls while black-necked stilts watch the game. Stray balls fly in the air or bob in the water.

Box2: An egret stands on the net to catch the balls while seagulls watch or try to steal the ball.

Linda Nystrom Past Works



Linda Nystrom Past Works



Linda Nystrom Past Works



Jayashree Sadasivan

Proposal #10 (Homestead Road @ Belleville Way)



The main theme for this utility box artwork is a Celebration of the Community where the utility box is located. Since the location of the box is located close to many schools and childcare centers, I chose to paint this box in a whimsical style as it will attract our young audiences. Each panel shows a different aspect of this community.

Box #1 (Large size Utility Box)

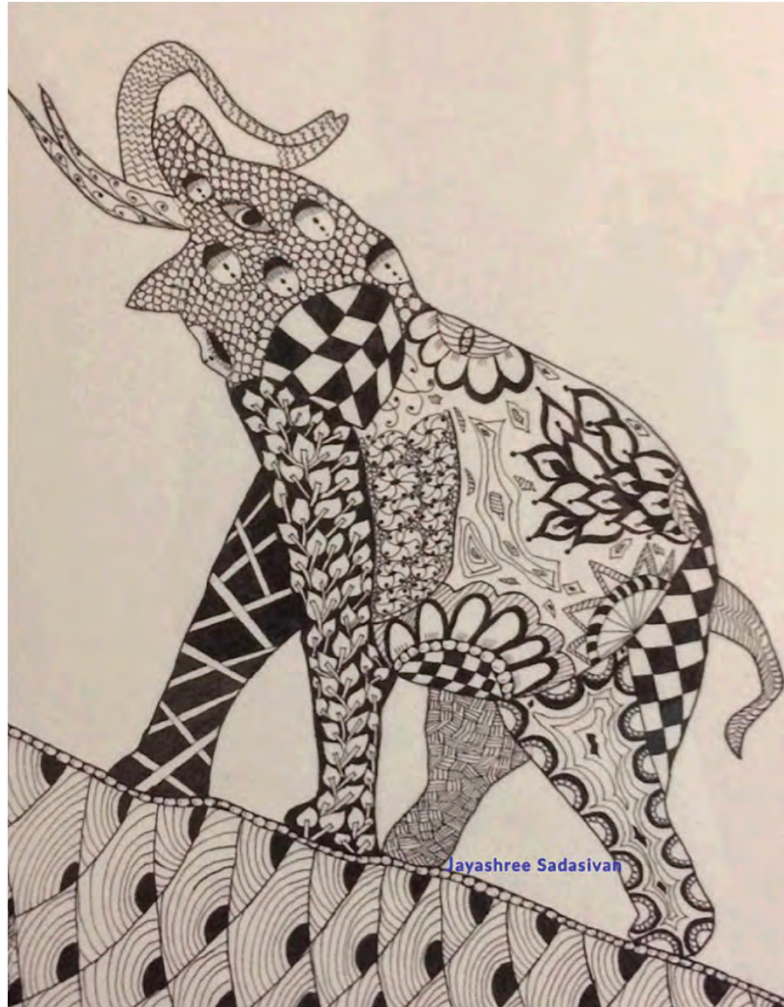
- Panel that faces the Homestead Road — I chose to paint the Stevens Creek that flows nearby to the box location. The creek is home to fishes that live there along with their friends the dragonflies.
- Panel that faces Belleville Way (Front panel) — This shows the playground of the school located nearby. Children enjoy playing with their friends because it makes them happy and builds long lasting friendships.
- Panel that faces the Box #2 (Small size utility box) — This shows that a school is a magical place of learning to be in. Because a school can provide a child to cultivate character and foster academic excellence in fields like science, mathematics , sports , music and creativity.
- Panel that faces the Sidewalk/Apartments — This panel shows a joyous community of apartments and houses that are located along the sidewalk where the utility box is located . A thriving neighborhood built on love(represented by the hearts on top of the building in my drawing) , growth (represented by the trees/plants near the building in my drawing) and life (represented by the birds near the building in my drawing).

Please Note: The tints, tones and shades of the colors will be slightly different in the final utility box as I have painted digitally. Conceptual Drawing of Box #1 Larger

Jayashree Sadasivan Past Works



Jayashree Sadasivan Past Works



Jayashree Sadasivan Past Works



Ria Sharma and Geeta Taneja

Proposal #11 (Fremont Avenue @ Wright Way)



"Entangled is a cubic expression of Ria's photography project on Mental wellness". It is a conceptual work to find 'escape through' from the online world. Sunnyvale is known for its multinational software giants. But the software excellence of the city also brings along an extensive need to be online. Sunnyvale, known for its peach and apricot trees that turn magically white just before spring. The blossom trees symbolizes the nature's beauty. 'Entangled' encourages its residents and visitors to take efforts to find ways to 'Digital detox' and find a healthy balance. Many of us choose #workfromhome since covid and indeed a much awareness needed for a mentally healthier lifestyle.

Ria Sharma

Past Works



Geeta Taneja Past Works



Geeta Taneja Past Works



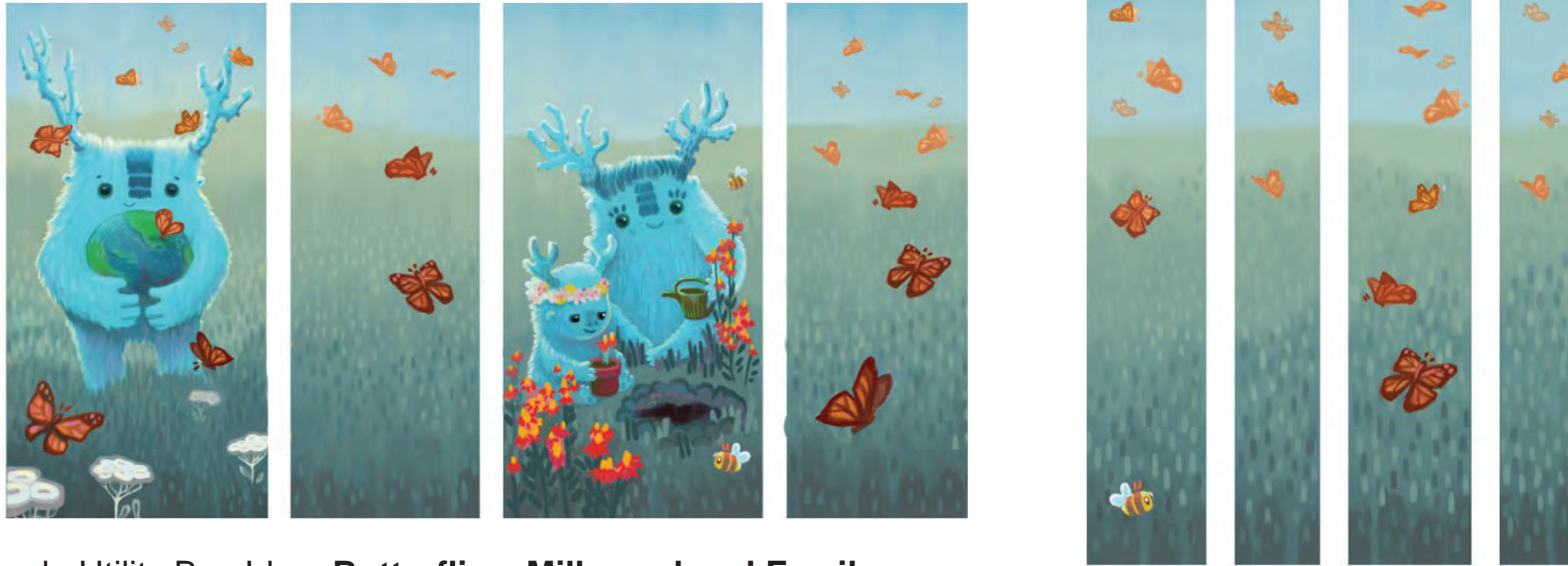
Geeta Taneja Past Works



PIC•COLLAGE

Katerina Spaeth

Proposal #12 (Lawrence Station Road @ Elko Drive)

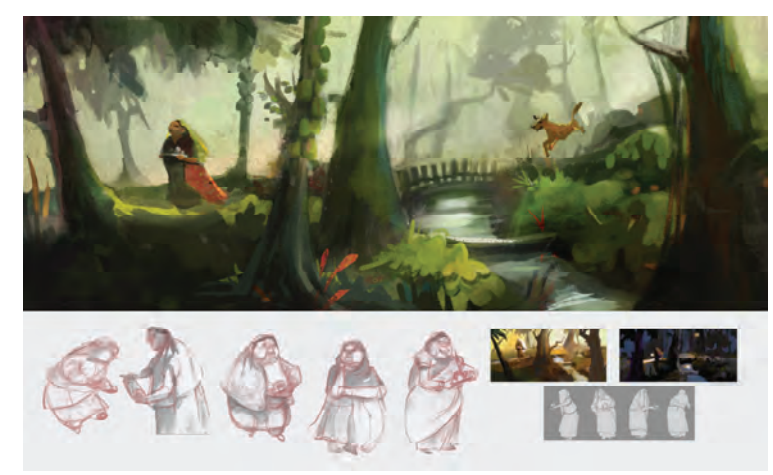


Sunnyvale Utility Box Idea: **Butterflies, Milkweed and Family**

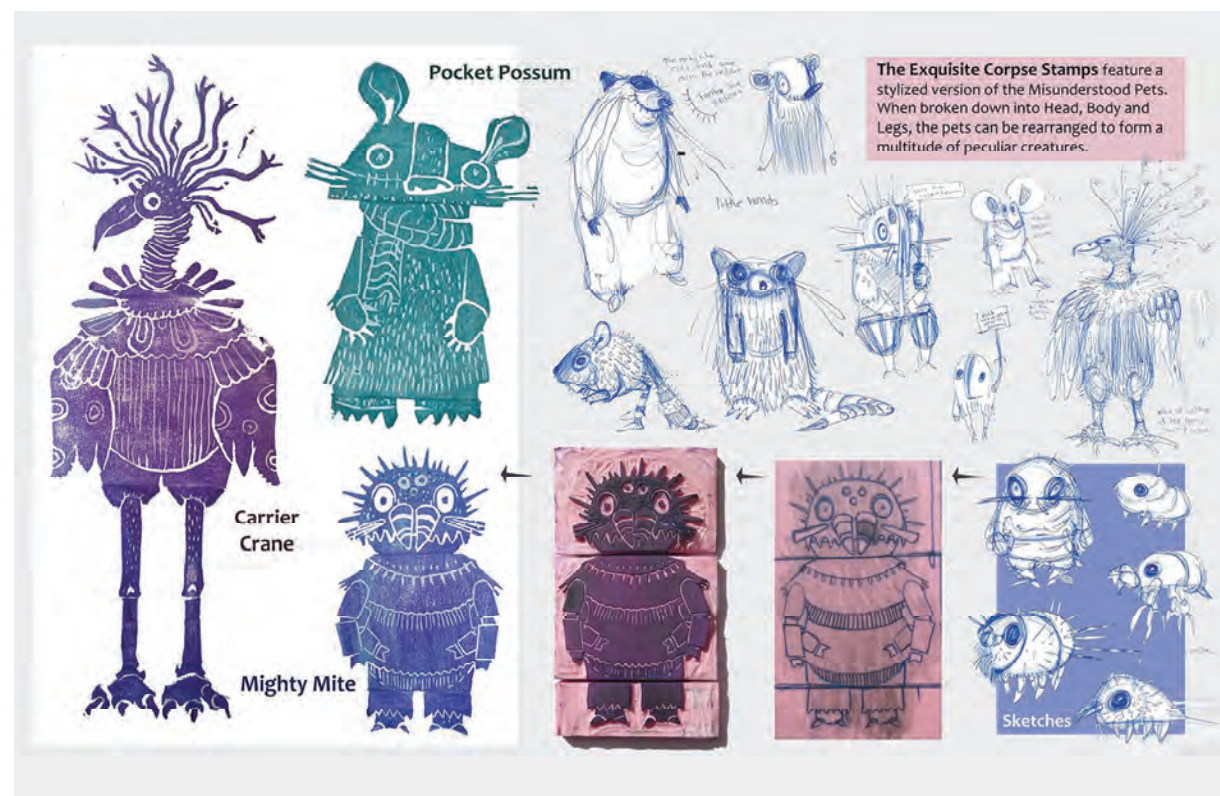
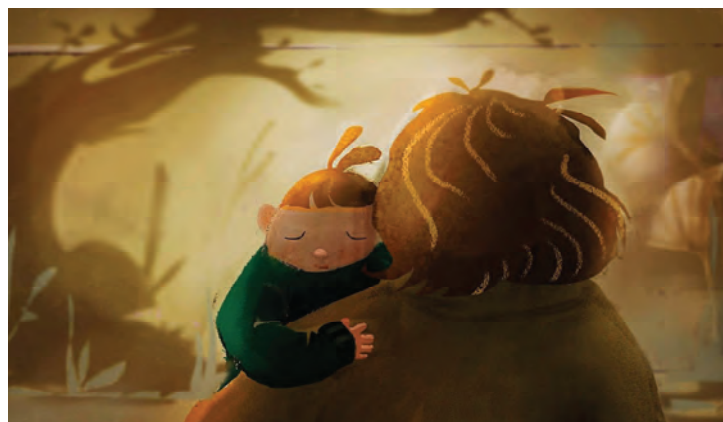
For my idea I am incorporating the increasingly endangered native Monarch Butterfly as the main motif. My box is situated on a busy Sunnyvale intersection that is currently being rebuilt with new structures rising up across the road. Butterflies are symbolic of transformation, growth and the power of new beginnings. All these are universal concepts related to the beautification process of a metropolitan area.

- On the front panel a friendly character, named Patchy Monster carries the world across a field of native plants, including the white yarrow. Butterflies and bees fly around him with one butterfly landing directly on the globe in his arms. This butterfly is a visual pun as it embodies a heart and a map marker.
- The back panel is a warm scene of a Patchy Monster mom teaching her child to garden. They are planting Milkweed flowers. I specifically chose the local, native Milkweed to spread awareness of this special plant, as it is crucial to the survival of the Monarch butterflies. The friendly monster child on the back panel wears a flower crown of cherry blossoms as a nod to the Olson's Cherry Farm. I think that gardening with your children is an incredible way to bond. Painting this panel took me back to my own childhood when I used to help my grandpa grow all kinds of flowers and vegetables in our garden.
- The side panels, the side box and the box tops feature bees and butterflies flying across the sky.

Katerina Spaeth Past Works



Katerina Spaeth Past Works



Katerina Spaeth

Past Works



Stephanie Tsao

Proposal #13 (Fair Oaks Avenue @ Iris Avenue)



My box concept features sun rays set behind local plants and animals.

Stephanie Tsao

Past Works



Stephanie Tsao Past Works

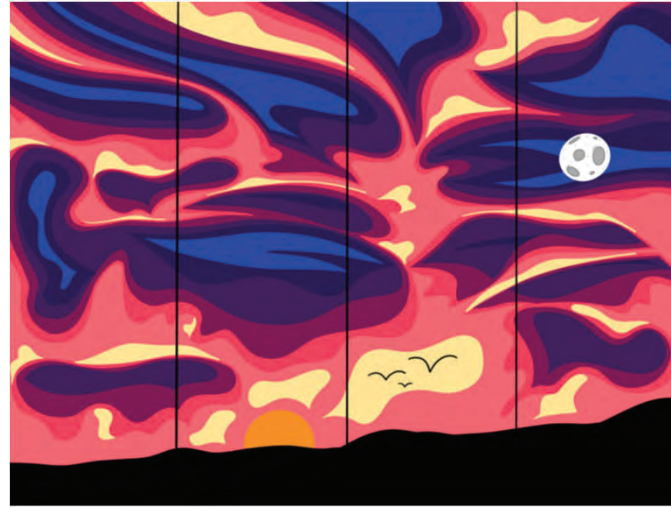
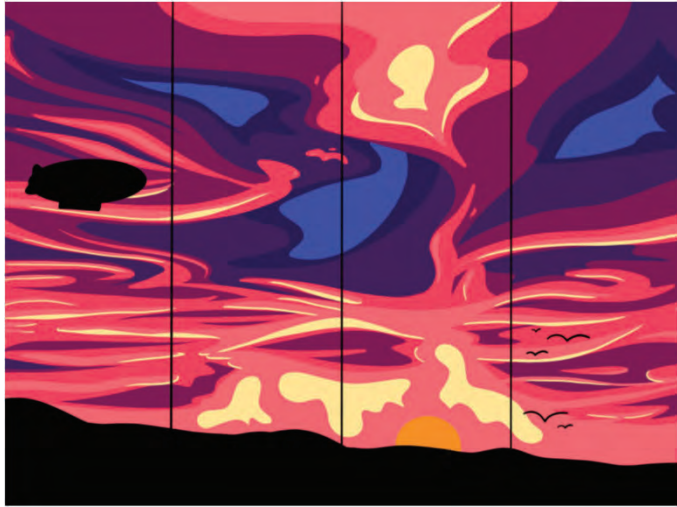


Stephanie Tsao Past Works



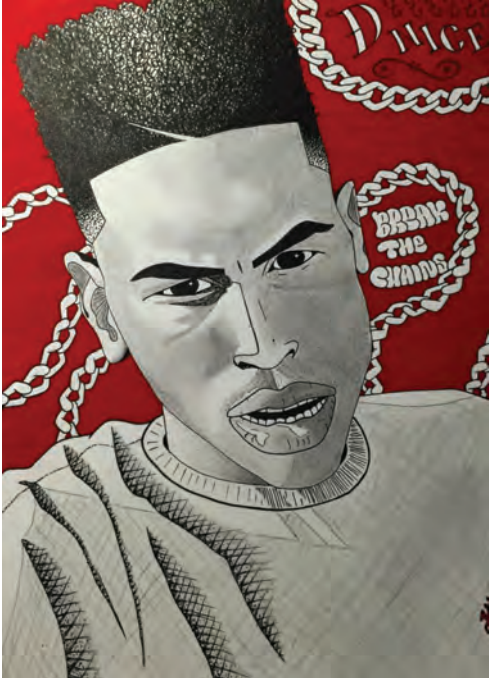
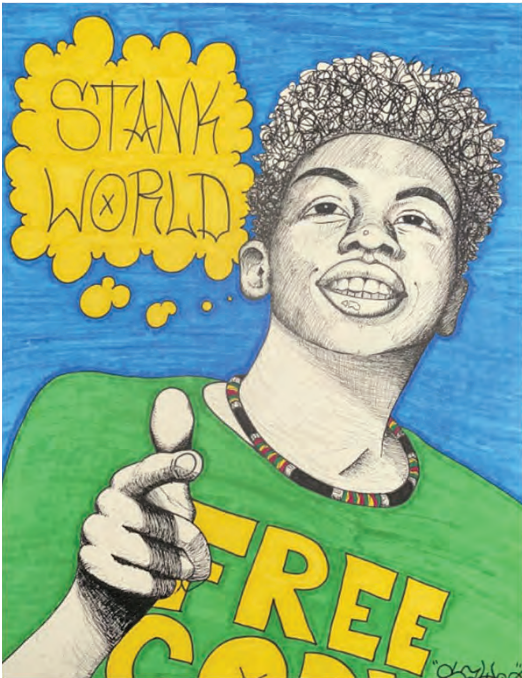
John Vellequette

Proposal #14 (Remington Drive @ Bernardo Avenue)

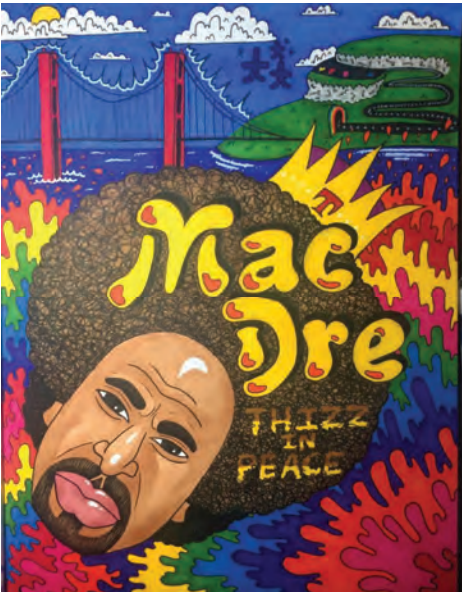


One of my favorite things in Sunnyvale are the sunsets, the whole sky turns all sorts of vibrant pinks, oranges, and purples. The only bad thing about them is that they only last about an hour in the evening, so my idea was to make it so that passersby could enjoy those natural colors anytime of day. I also wanted something bright and cheerful for all the kids going to and from nearby Sunnyvale Middle School to enjoy. I also added a blimp, a call back to the times they used to grace the skies above Sunnyvale on their way to Moffett Field's massive airship hangars. The moon also makes an appearance just as it often does when it rises a little too early and ends up sharing the blue sky with the sun. Below are the rough drafts to give an idea of what this would look like.

John Vellequette Past Works



John Vellequette Past Works



Deirdre Weinberg

Proposal #15 (Mathilda Avenue @ El Camino Real)

DEIRDRE WEINBERG
UTILITY BOX PROPOSAL

Taking the subjects of innovation and inclusion that define the Sunnyvale area, I propose to showcase prismatic light; light that glows and throws colors around the room. This is allegorical for the beauty and possibility that comes with taking chances. The design is bold and colorful and will be easily read from a distance.



BOX TOP



BOX FRONT

A young person of color holds a prismatic bar, reflecting in her face and illuminating everything around her. Energy and innovation is sparking.



The side panel continues the colorful rays from the prism.



BOX BACK

A hand holds a crystal shaped prism, throwing rainbow rays over the surface.



The side panel extends the rings and streaks of color.

Deirdre Weinberg Past Works

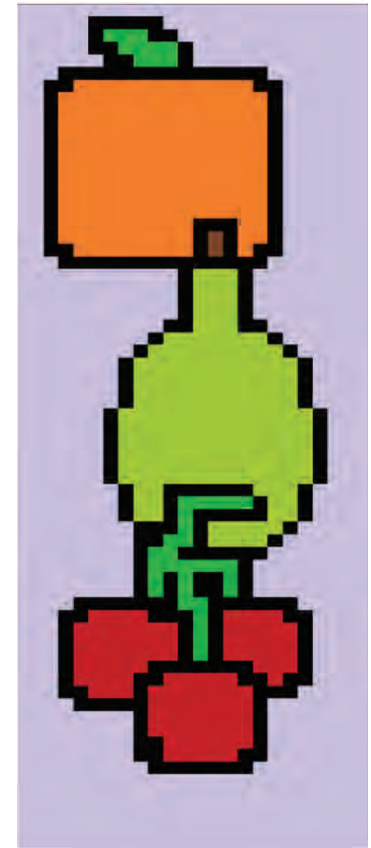
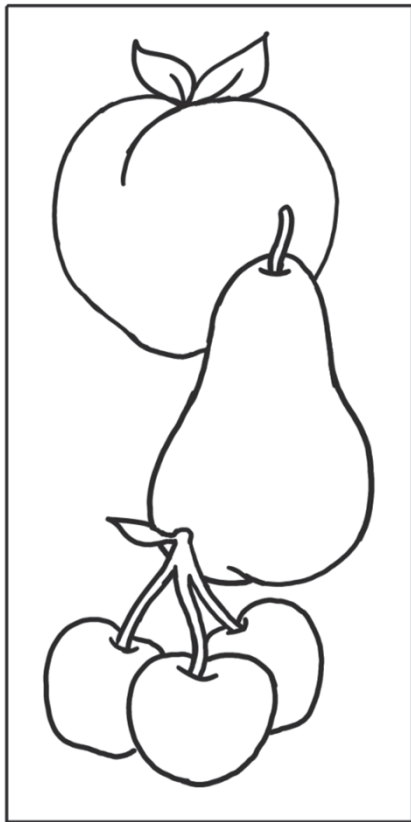


Dierdre Weinberg Past Works



Madeline Yung

Proposal #16 (Iowa Avenue @ Taaffe Street)



This box design was inspired by both the city's past as a fruit orchard, specifically peaches, pears, and cherries, as well as its present as a center for technological advancement. Passersby can circle the box and watch the story unfold: each side features the same fruits becoming more and more pixelated in a clockwise direction, with thin side 1 facing the street, followed by wide side 2, thin side 2, then wide side 1, reflecting the area's progress towards modernity and automation. Wide side 1 will be colored similarly to the other three sides (I don't have the programs to do anything more on my computer), but without the pixelated look. The top of the box is simply the background color shared by the other four sides. This soft color was chosen to complement the bold colors of the fruits and as a light base to help prevent overheating of the box.

Madeline Yung Past Works



Madeline Yung Past Works

