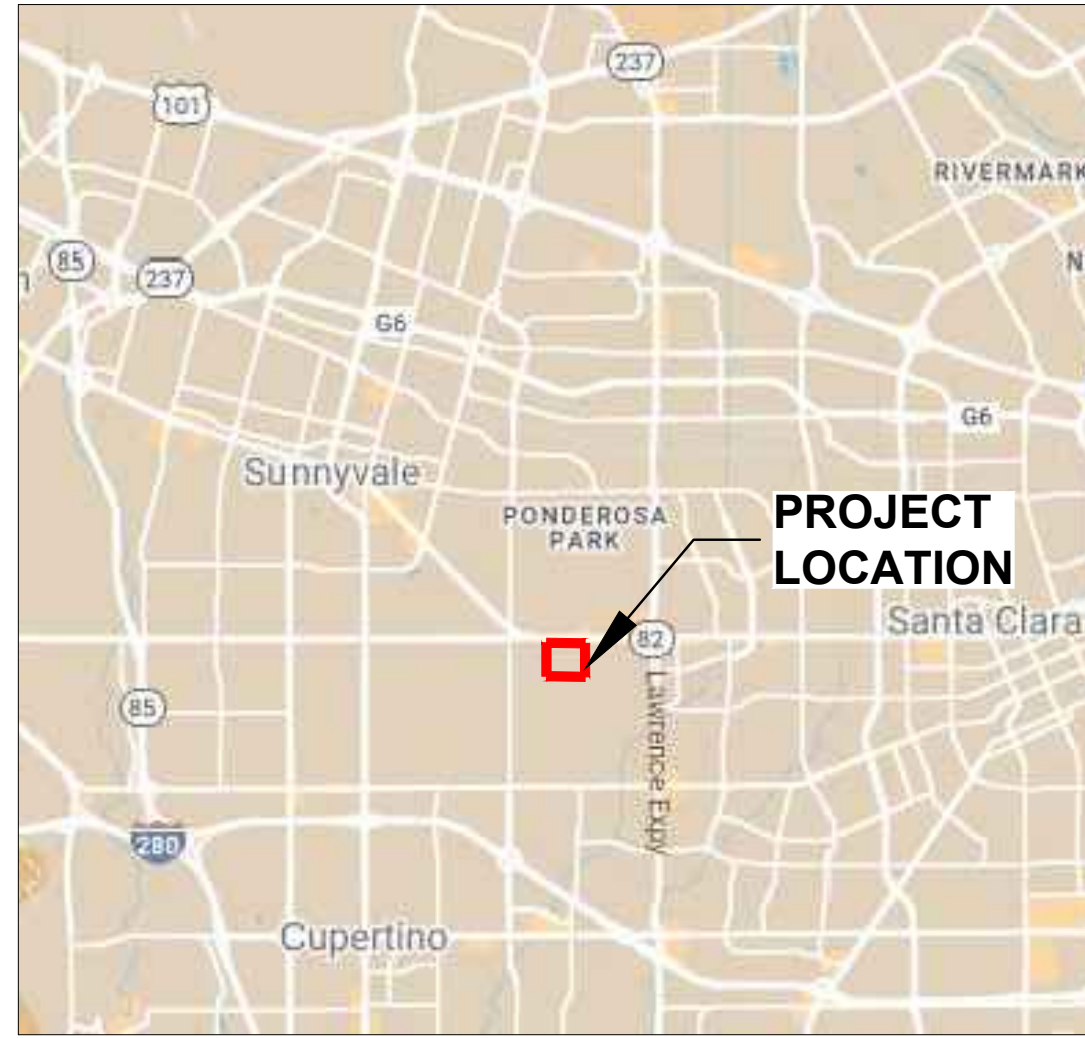
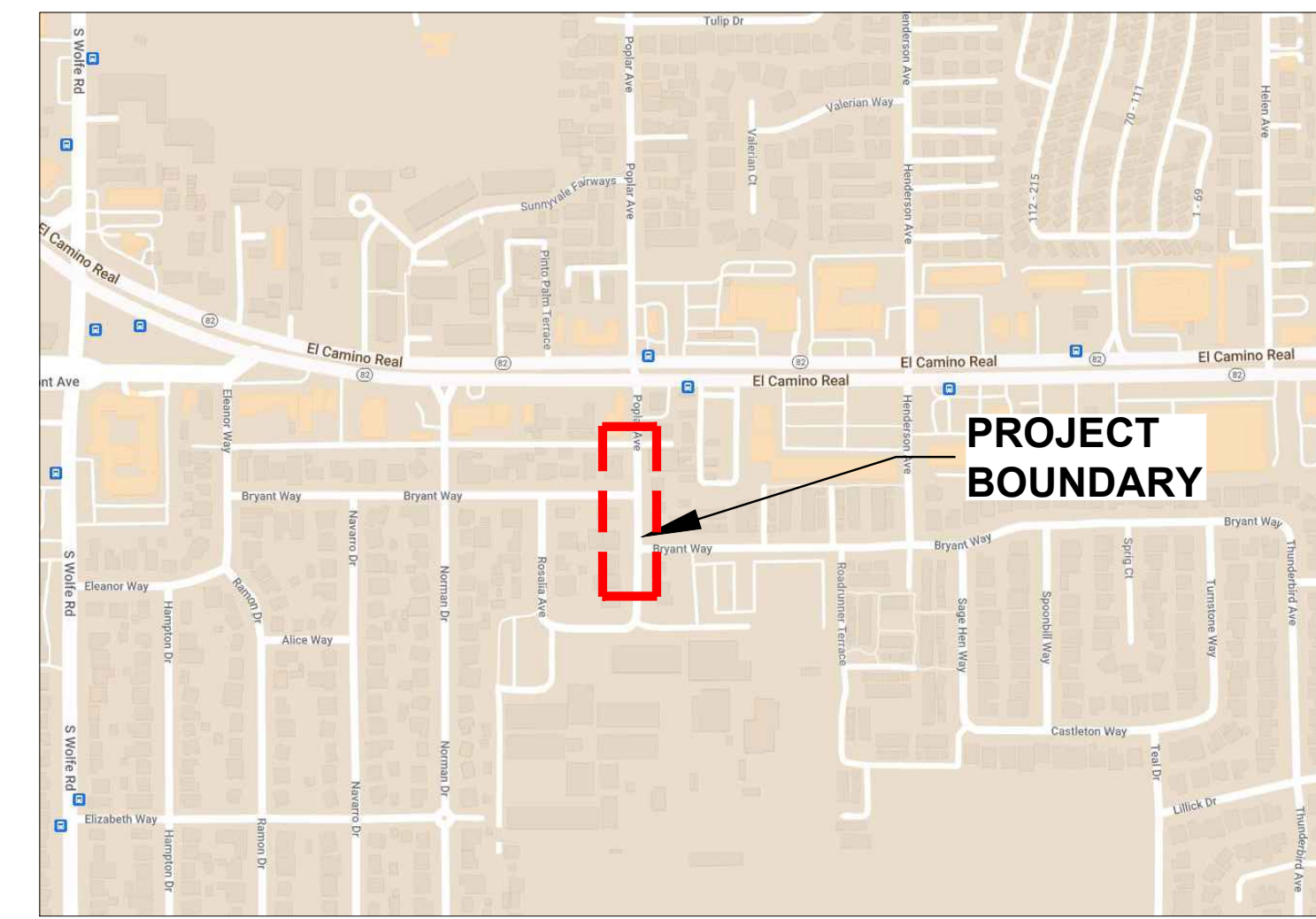


PLAN
SCALE: 1" = 30'

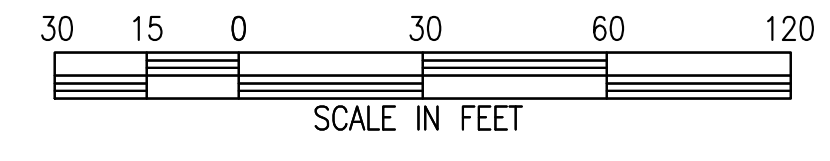


VICINITY MAP
SCALE: NTS



SITE MAP
SCALE: NTS

- LEGEND**
- SIDEWALK
 - BIORETENTION AREA
 - PARK STRIP AREA
 - DRIVEWAY
 - CURB RAMP
 - TREE TO BE REMOVED



Rev.	Description	Date



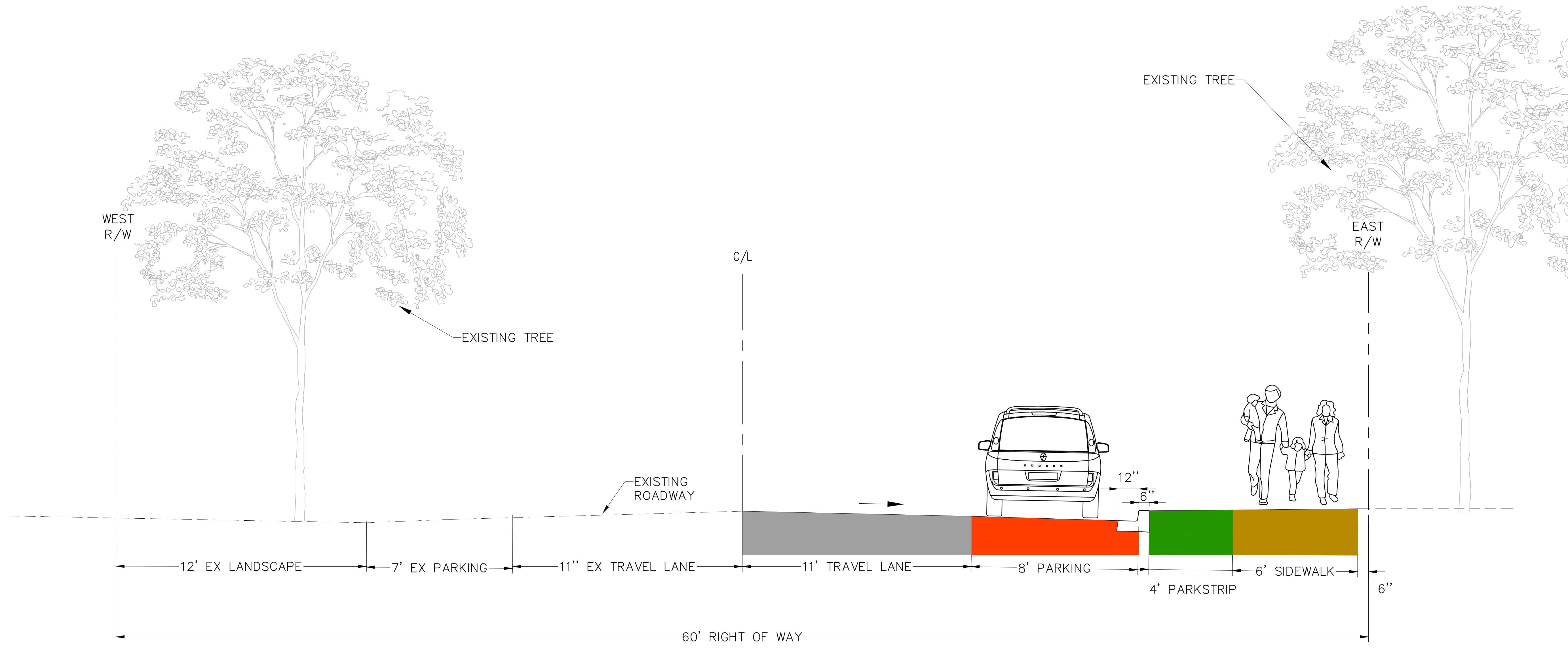
Date	
Scale	1"=30'
Designed By:	AA
Drawn By:	AN
Checked By:	AA
Consultant's Job No.	220071

POPLAR AVENUE SIDEWALK STUDY

POPLAR CONCEPT A



City of Sunnyvale Santa Clara County California	City of Sunnyvale Project No. TR-22-02
Department of Public Works 456 West Olive Avenue Sunnyvale, CA 94086	Drawing No.
	Sheet ____ of ____



TYPICAL SECTION - POPLAR CONCEPT A
NTS

Rev.	Description	Date

Bellecci
Intelligent Infrastructure
925 • 685 • 4569
bellecci.com



Date	
Scale	1"=30'
Designed By:	AA
Drawn By:	AN
Checked By:	AA
Consultant's Job No.	220071

POPLAR AVENUE SIDEWALK STUDY

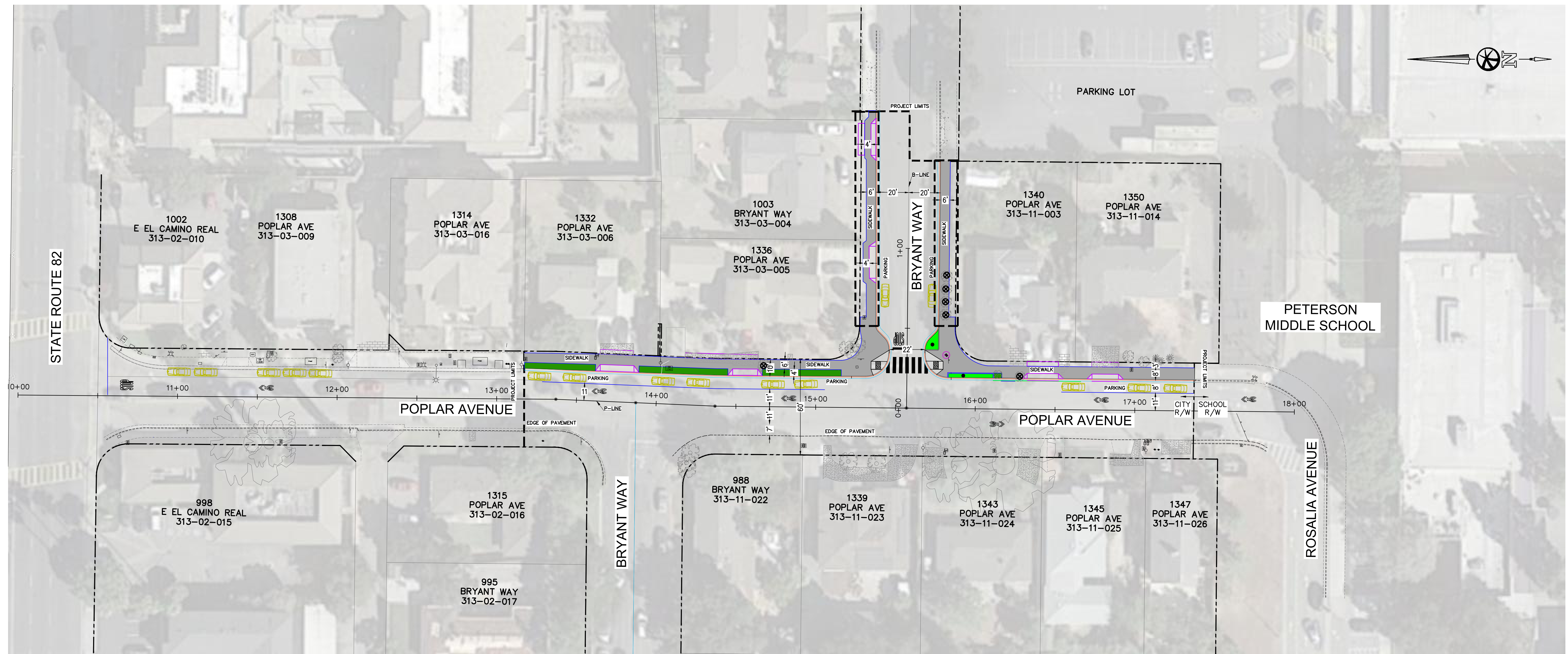
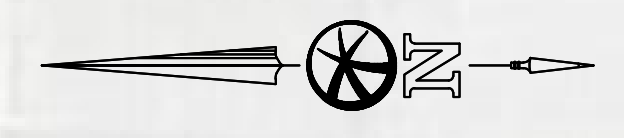
TYPICAL SECTION - POPLAR CONCEPT A



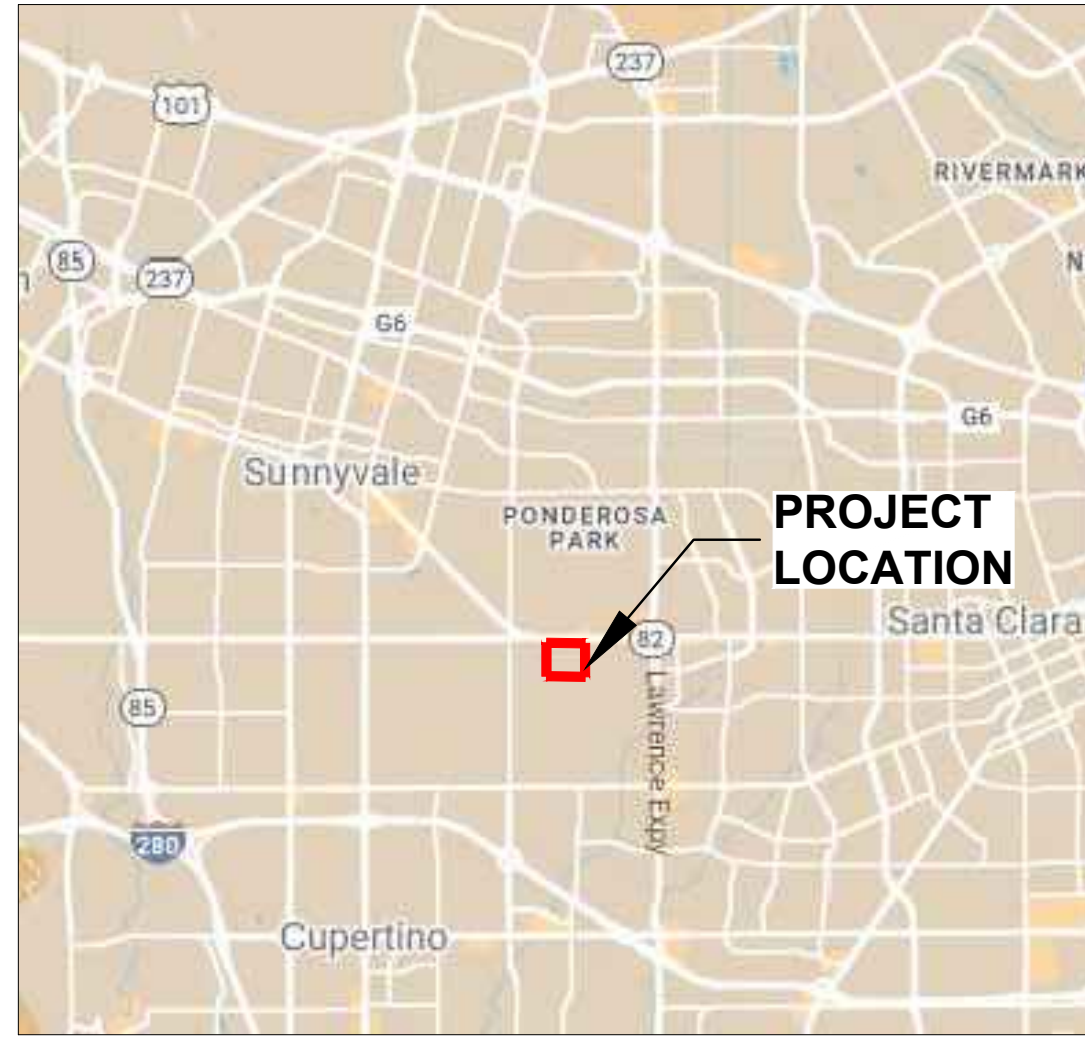
City of Sunnyvale
Santa Clara County
California

Department of Public Works
456 West Olive Avenue
Sunnyvale, CA 94086

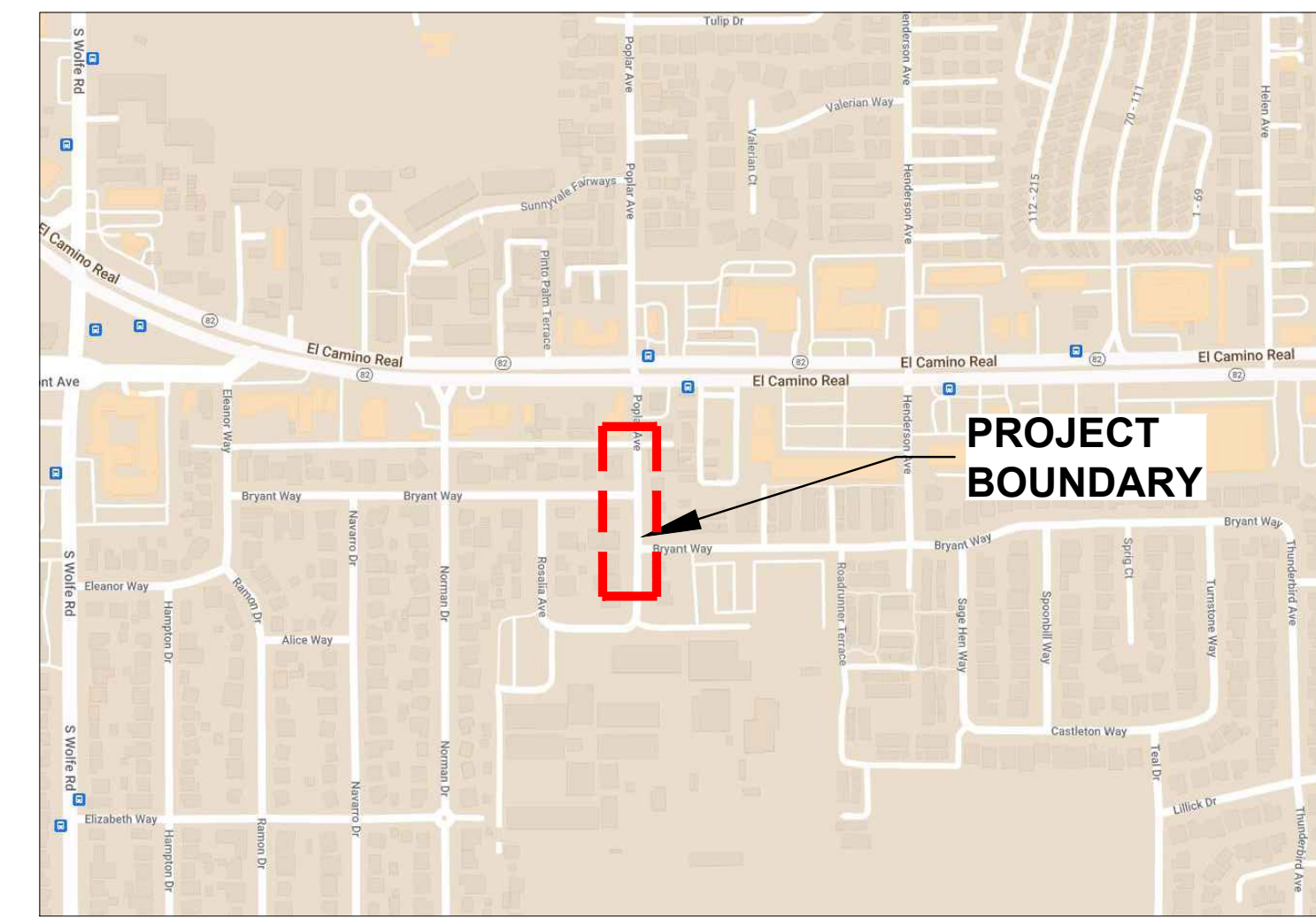
City of Sunnyvale Project No. TR-22-02
Drawing No.
Sheet ____ of ____






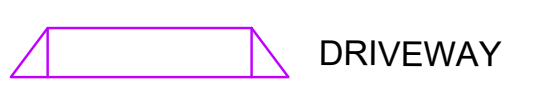
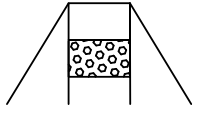

PLAN
SCALE: 1" = 30'

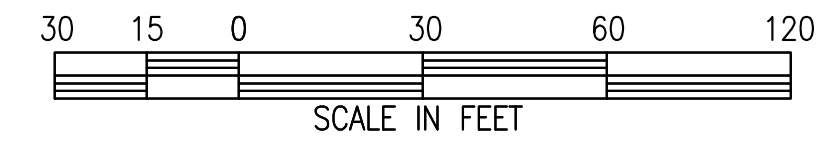


VICINITY MAP
SCALE: NTS



SITE MAP
SCALE: NTS

- LEGEND**
-  SIDEWALK
 -  BIORETENTION AREA
 -  PARK STRIP AREA
 -  DRIVEWAY
 -  CURB RAMP
 -  TREE TO BE REMOVED



Rev.	Description	Date



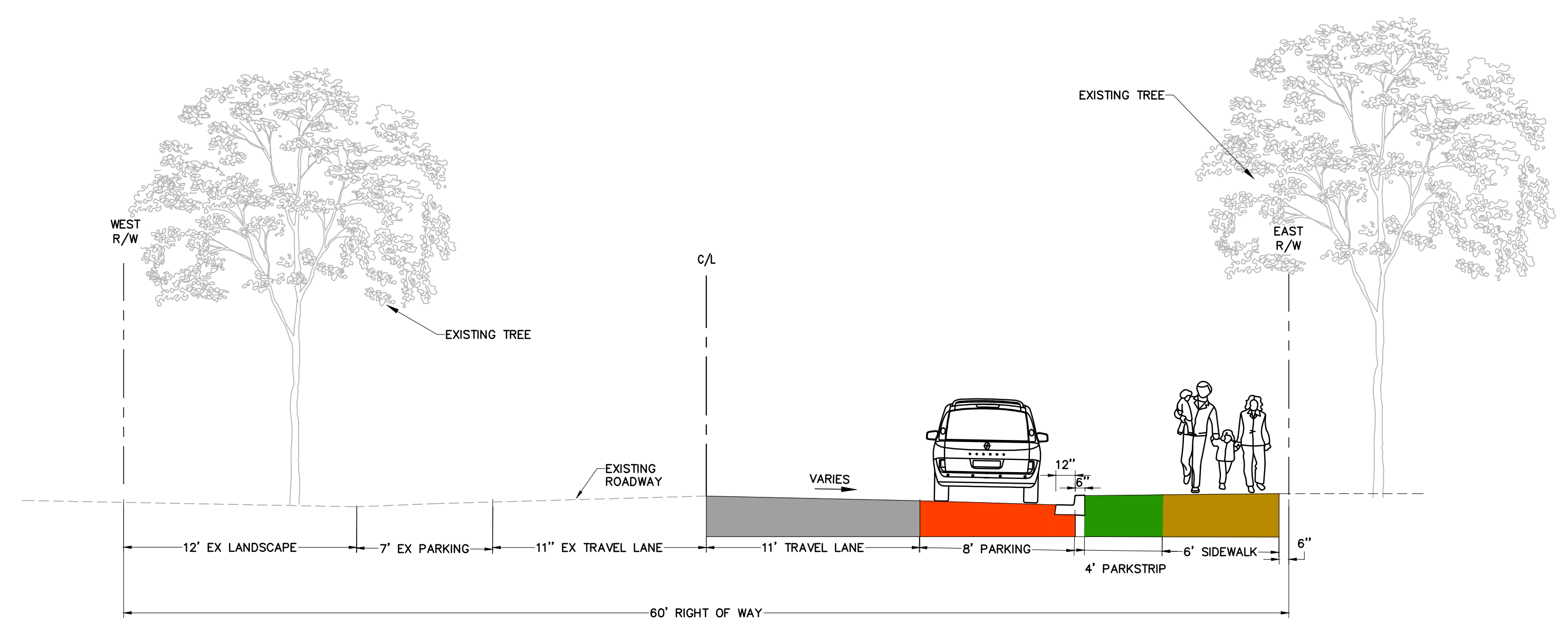
Date	
Scale	1"=30'
Designed By:	AA
Drawn By:	AN
Checked By:	AA
Consultant's Job No.	220071

POPLAR AVENUE SIDEWALK STUDY

POPLAR CONCEPT B

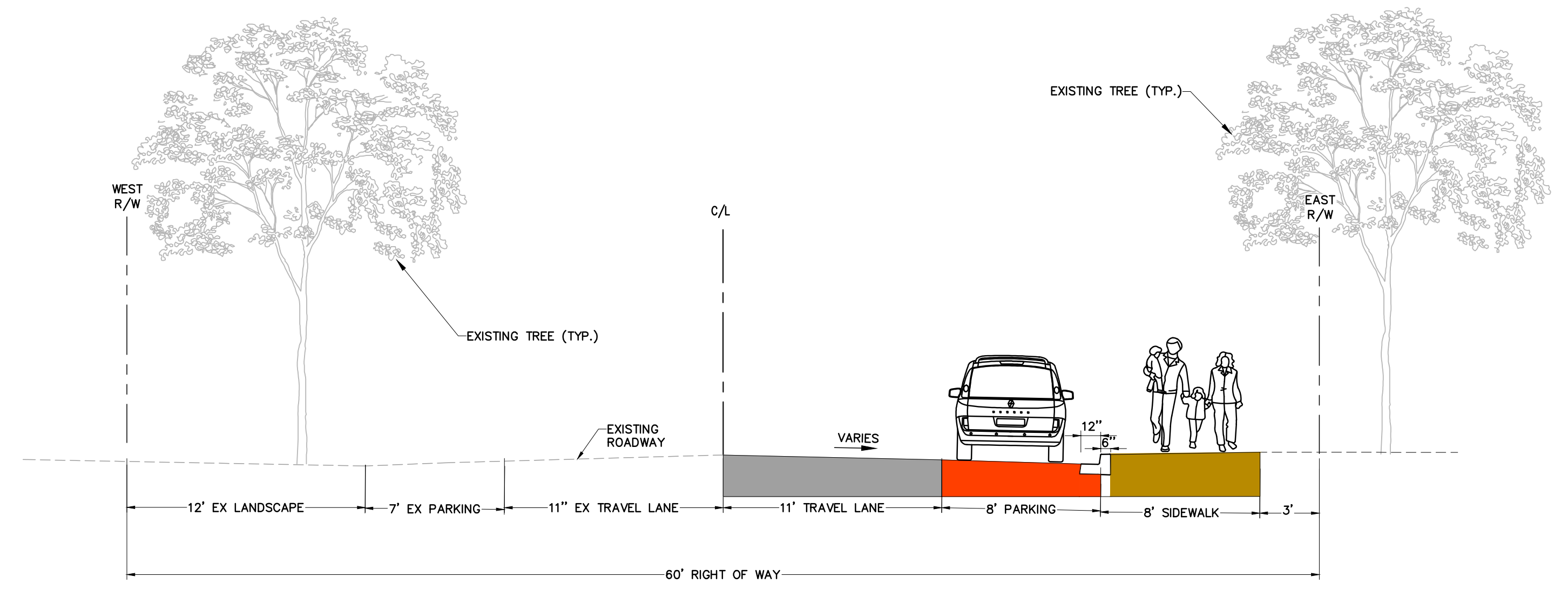


City of Sunnyvale Santa Clara County California	City of Sunnyvale Project No. TR-22-02
Department of Public Works 456 West Olive Avenue Sunnyvale, CA 94086	Drawing No.
	Sheet ____ of ____






TYPICAL SECTION- POPLAR CONCEPT B - NORTH OF BRYANT WAY

NTS



TYPICAL SECTION- POPLAR CONCEPT B - SOUTH OF BRYANT WAY

NTS

			 <p>925 • 685 • 4569 bellecci.com</p>		Date		<p align="center">POPLAR AVENUE SIDEWALK STUDY</p> <p align="center">TYPICAL SECTION - POPLAR CONCEPT B</p>		City of Sunnyvale Santa Clara County California	City of Sunnyvale Project No. TR-22-02
Rev.	Description	Date			Scale 1" = 30' Designed By: AA Drawn By: AN Checked By: AA Consultant's Job No.: 220071	Department of Public Works 456 West Olive Avenue Sunnyvale, CA 94086			Drawing No. Sheet ____ of ____	