

BROWN

IS THE NEW GREEN

WATER LESS. YOUR LAWN WILL LIVE.



Providing Safe, Clean Water During a Historic Drought

James M. Fiedler, P.E., D.WRE
Chief Operating Officer
Water Utility Enterprise

Darin Taylor
Senior Project Manager

**Santa Clara Valley
Water District**



An integrated approach

Mission:

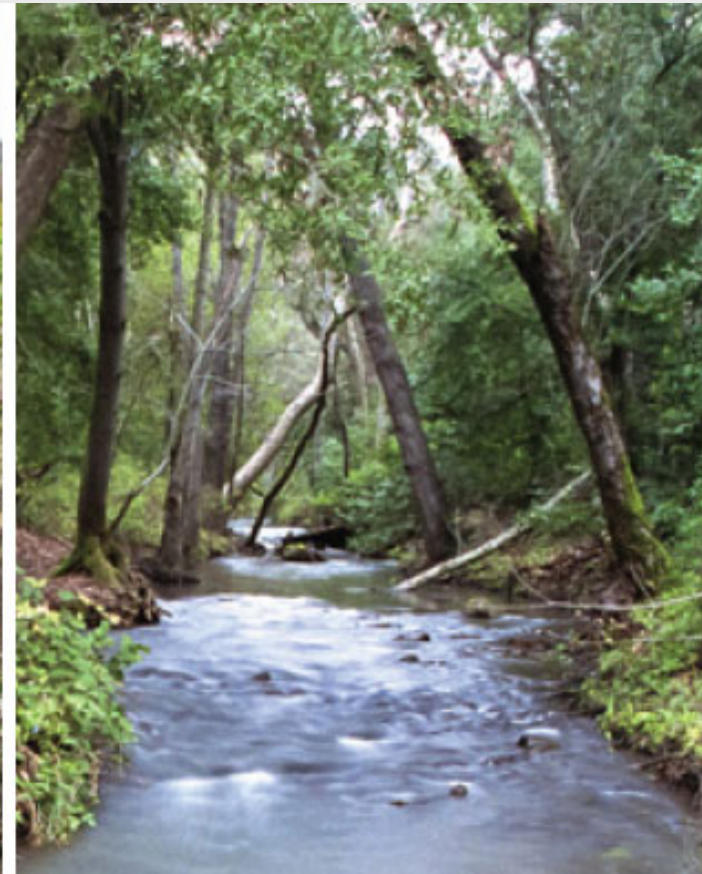
Providing Silicon Valley safe, clean water for a healthy life, environment and economy



CLEAN, RELIABLE WATER



FLOOD PROTECTION



**HEALTHY CREEKS &
ECOSYSTEMS**

Who we serve

2 million people

15 cities

4,700 well owners

13 water retailers

5 watersheds



Where Do We Get Our Water?



Shasta Lake

Federal Central Valley Project

Lake Oroville

State Water Project



Water supply*

- 55%** Imported
- 30%** Local
- 5%** Recycled
- 10%** Conservation savings

** in average year*

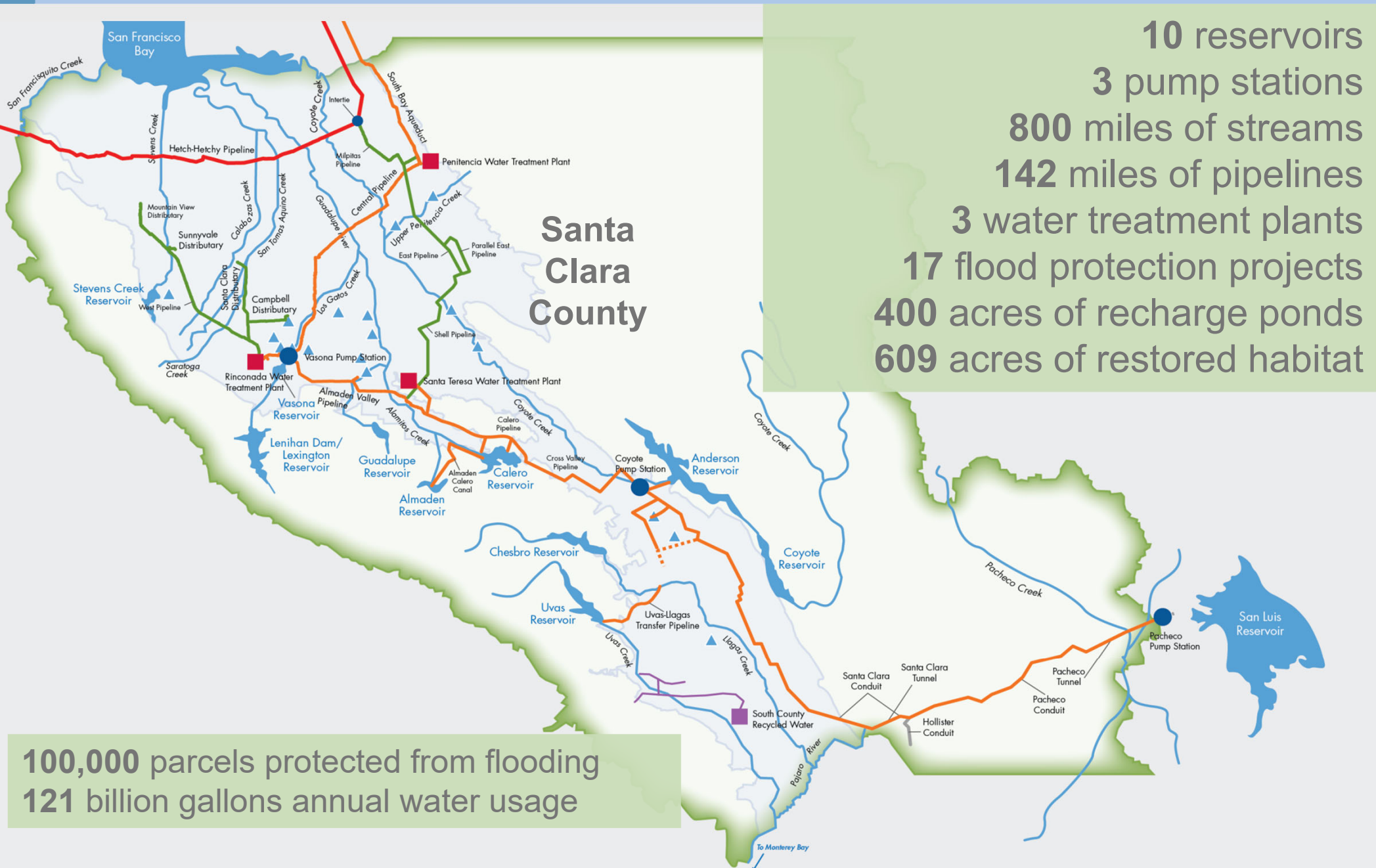
**Sacramento-San Joaquin
River Delta**

Hetch Hetchy

San Francisco

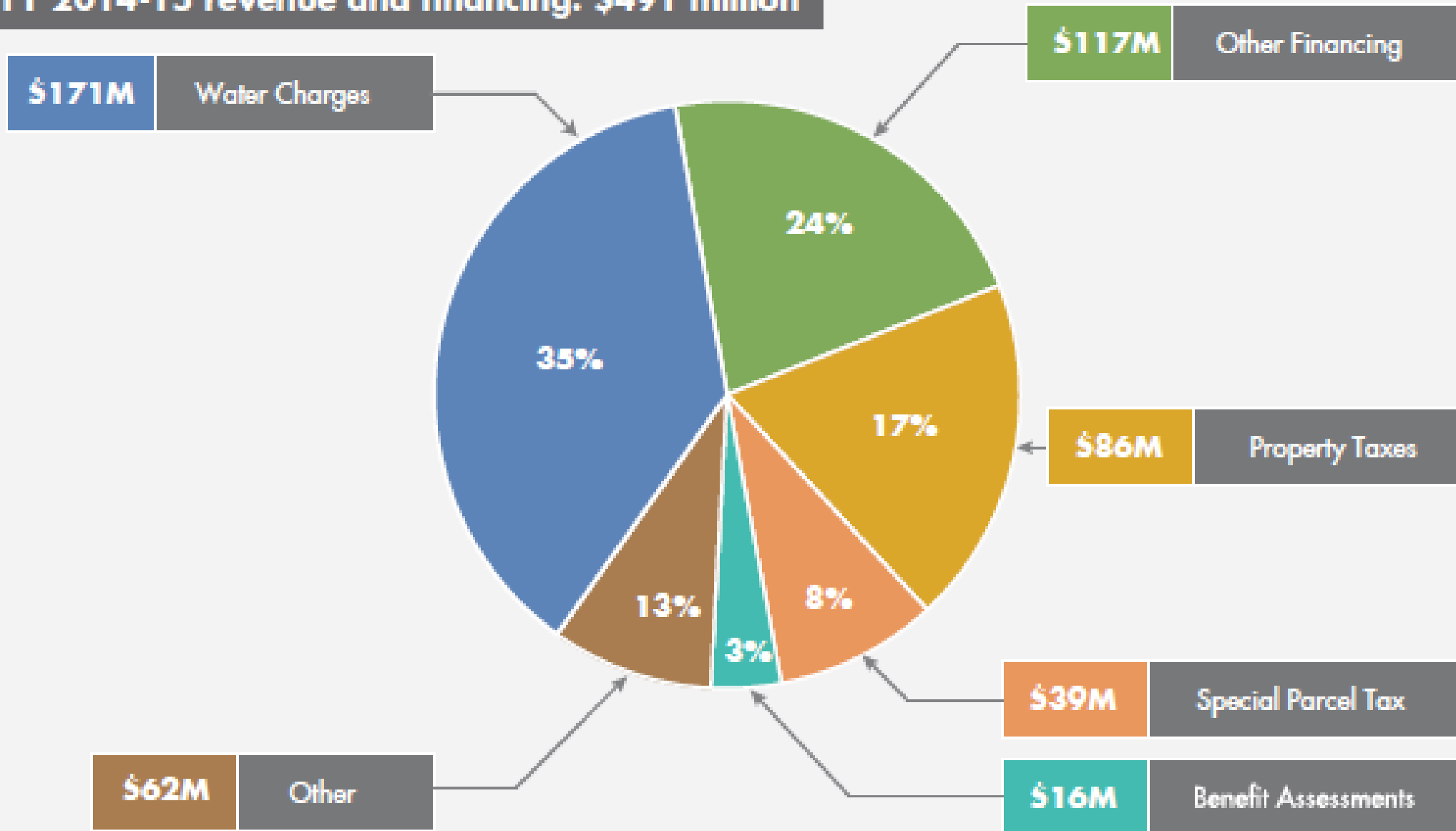


A comprehensive water system



Water Budgeting 101—Revenue

FY 2014-15 revenue and financing: \$491 million



Water Budgeting 101—Expenses

FY 2015 total outlays: \$469.1 million*

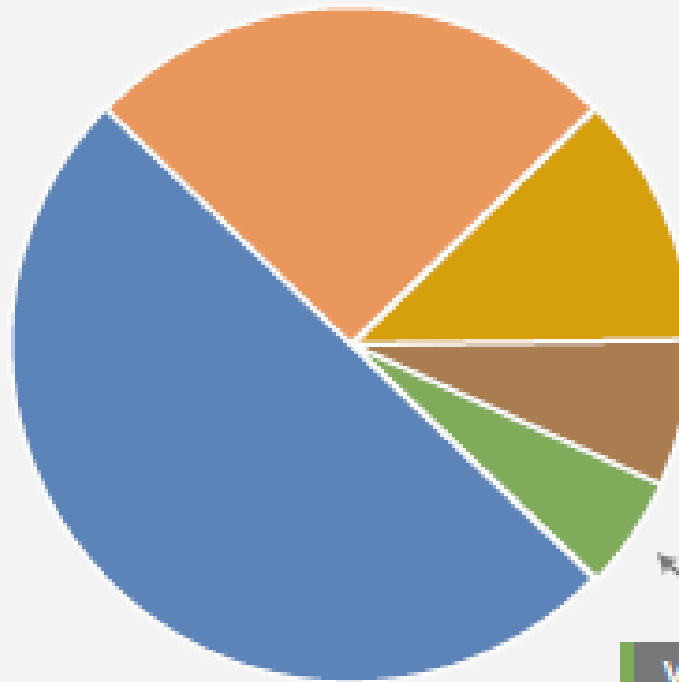
Healthy and safe environment **\$125M** **27%**

Support Services* **\$50M** **11%**

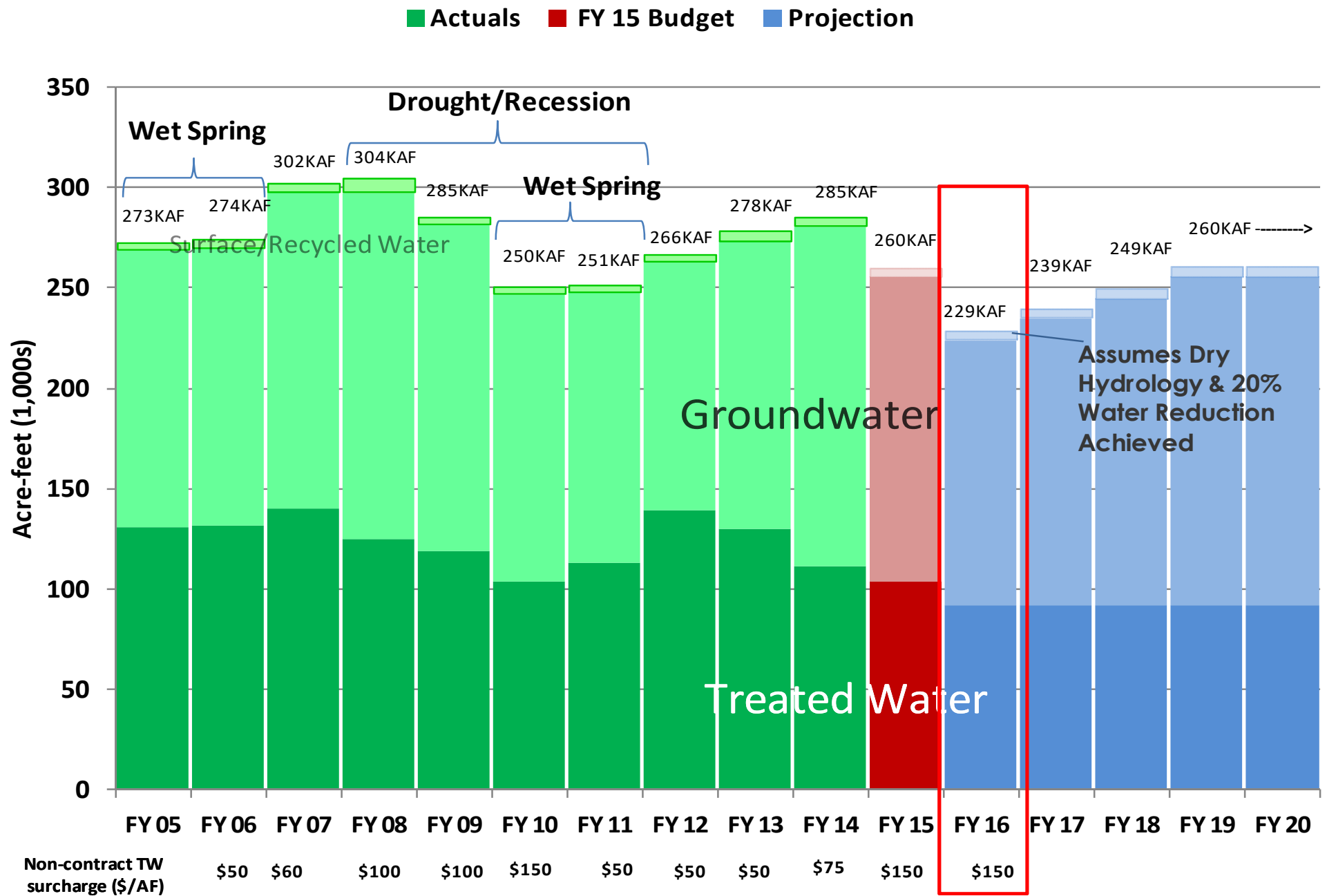
Reliable, Clean Water **\$236M** **50%**

Debt Service **\$35M** **7%**

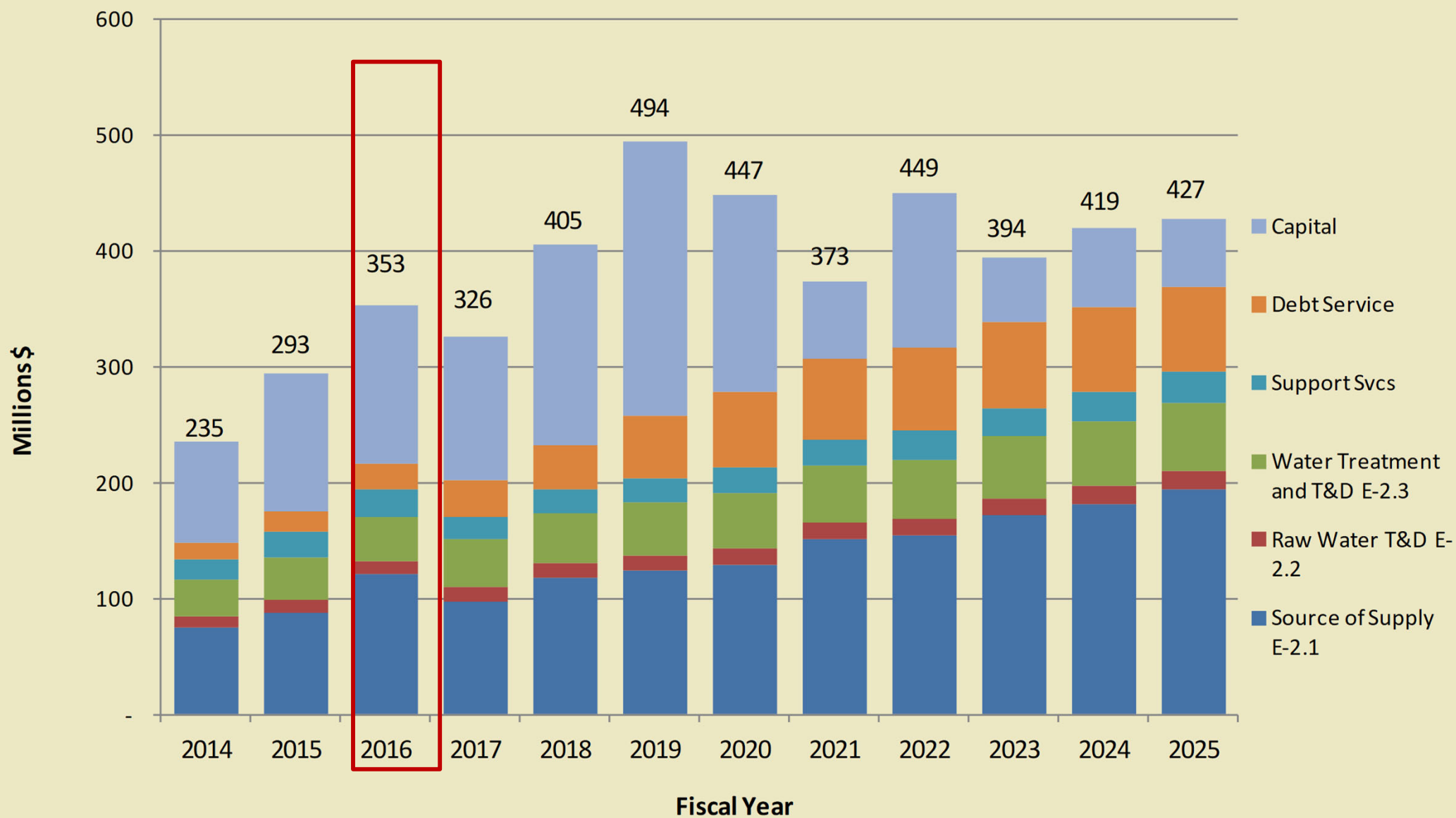
Water Resources Stewardship **\$22M** **5%**



Water Use Projection



Financial Analysis: Cost Projection



FY 2016: North County Proposed Maximum Charges

19.1% ~~31.5%~~ increase for M&I groundwater production
16.9% ~~27.7%~~ increase for contract treated water **16.5%**
19.2% ~~31.2%~~ increase for M&I surface water & ~~17.6%~~ for Ag surface water
11.6% ~~13.8%~~ increase for Ag groundwater production

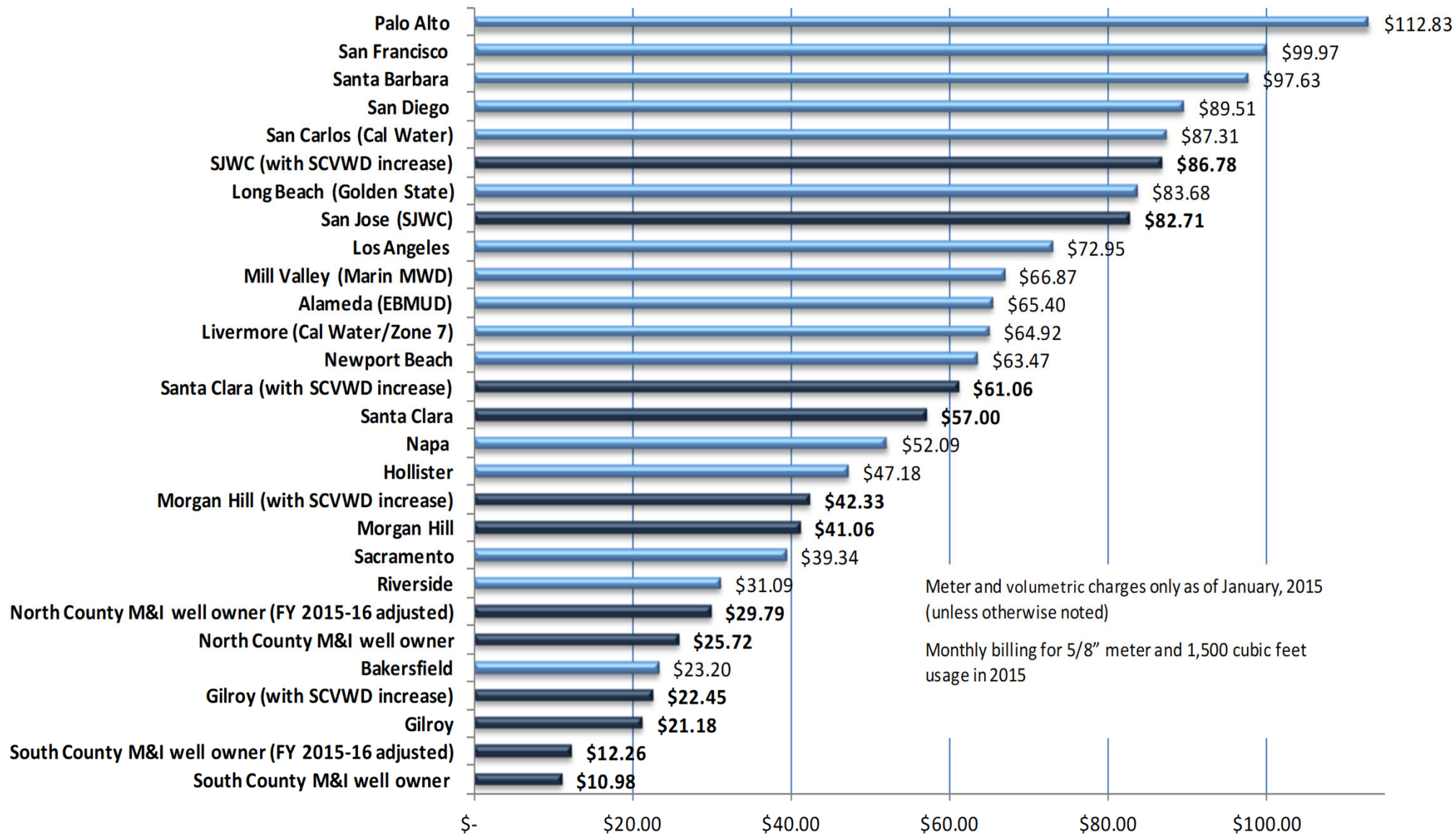
Board Approved
Changes as of 3/24/15

		Dollars Per Acre Foot		
		FY 2013–14	FY 2014–15	Proposed Maximum FY 2015–16
Zone W-2 (North County)				
Basic User/Groundwater Production Charge				
	Municipal & Industrial	680.00	747.00	982.00 890.00
	Agricultural	18.30	19.14	21.79 21.36
Surface Water Charge				
	Surface Water Master Charge	15.31	18.60	22.60
	Total Surface Water, Municipal & Industrial*	695.31	765.60	1,004.60 912.60
	Total Surface Water, Agricultural*	33.61	37.74	44.39 43.96
Treated Water Charges				
	Contract Surcharge	100.00	100.00	100.00
	Total Treated Water Contract Charge**	780.00	847.00	1,082.00 990.00
	Non-Contract Surcharge	75.00	150.00	150.00
	Total Treated Water Non-Contract Charge***	755.00	897.00	1,132.00 1,040.00

\$5.09

~~\$8.09~~ per month average household increase

Retailer Benchmarks

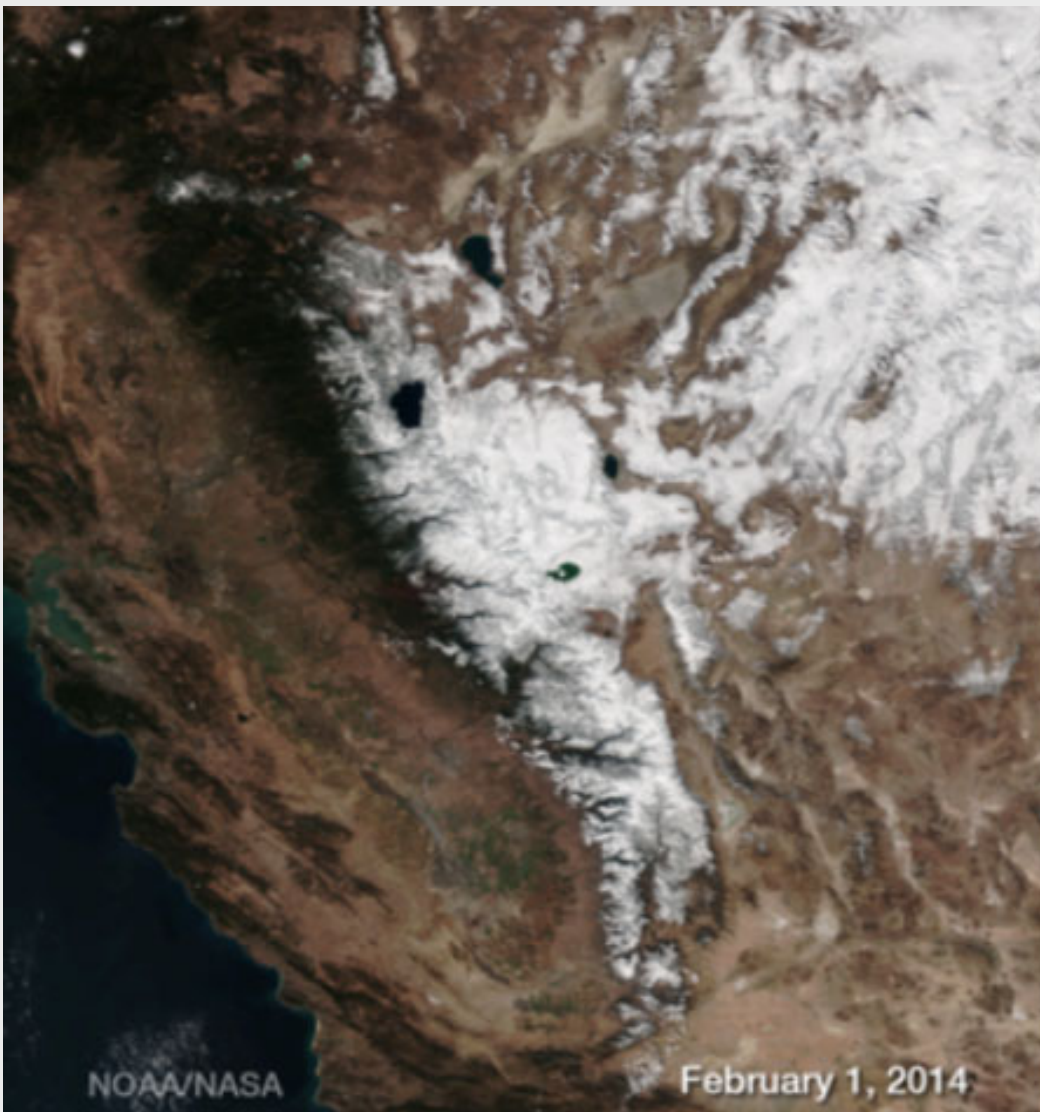


Groundwater Rate Hearings: Ensure Feedback and Transparency

2015 schedule for hearings and meetings

- ✓ Dec 9 Board Workshop: Planning for FY 16 Groundwater Prod. Charges
- ✓ Jan 13 Board Meeting on Preliminary Groundwater Prod. Charge Analysis
- ✓ Feb 10 Board meeting on Groundwater Production Charges Analysis Update
- ✓ Feb 24 Board meeting on Drought Component Funding Options
- ✓ Feb 27 **Mail notice of public hearing and file PAWS report**
- ✓ March 10 Board meeting on Drought Component Mitigation Options
- ✓ March 18 Water Retailers Meeting
- ✓ March 24 Board meeting on Drought Component Mitigation Options
- ✓ April 6 Ag Water Advisory Committee
- ✓ April 7 Landscape Meeting
- April 8 Water Commission Meeting**
- April 14 Open Public Hearing
- April 16 Continue Public Hearing in Morgan Hill (Informational Open House)
- April 20 Environmental & Water Resources Committee
- April 28 Conclude Public Hearing
- May 12 Adopt budget & groundwater production and other water charges

Water Increasingly Scarce: Snowpack at 6%



Water Increasingly Scarce (cont.)

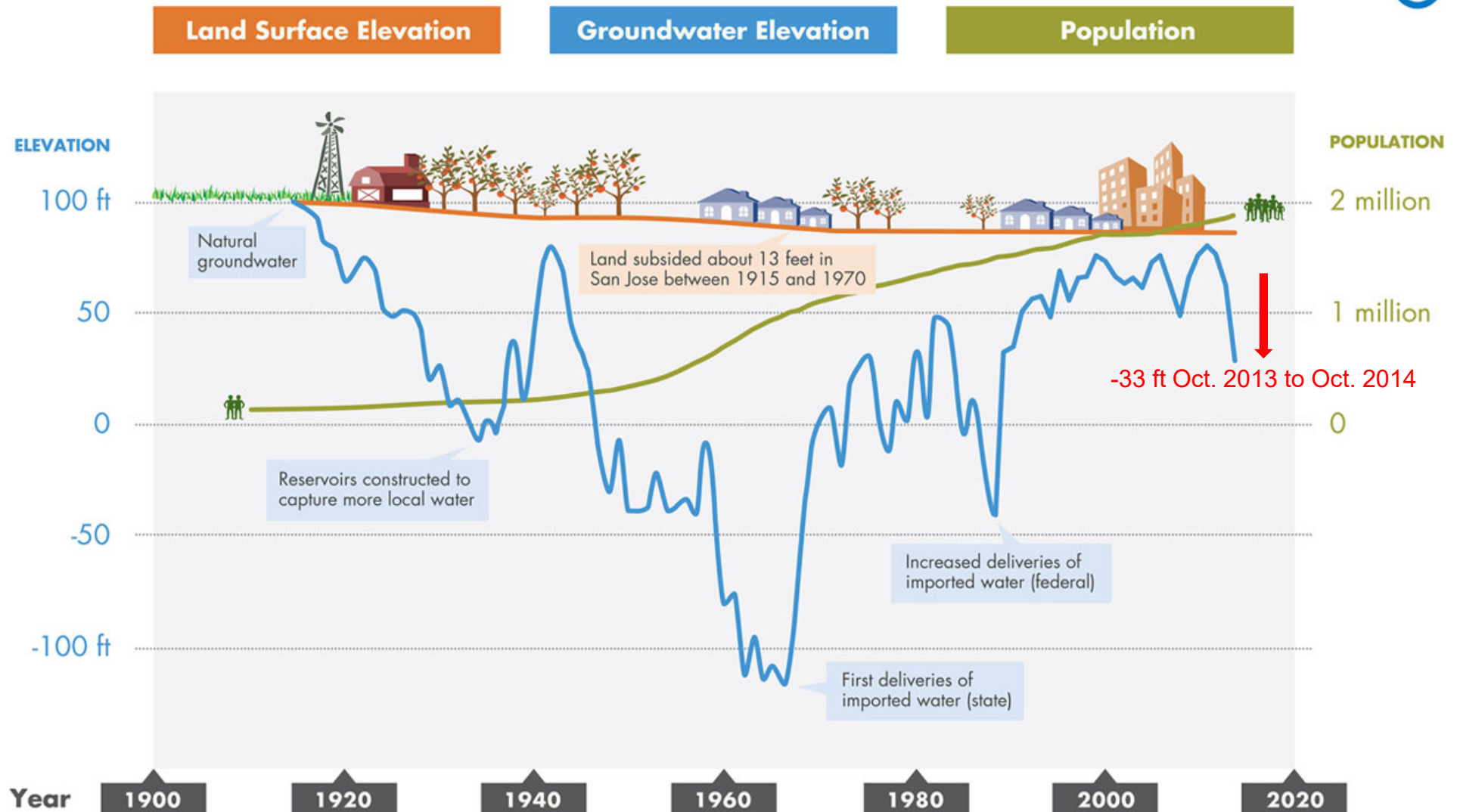
- Imported water allocations at 20-25%
- Reservoir storage at 69% of average
- Groundwater down 80,000 acre-feet in one year



Local Groundwater Management

SANTA CLARA COUNTY GROUNDWATER AT-A-GLANCE

a graphic representation not intended as a technical exhibit





State Water Board: New Restrictions

What's Prohibited for Everyone

- Using potable water to wash sidewalks & driveways
- Runoff when irrigating with potable water
- Using hoses with no shutoff nozzles to wash cars
- Using potable water in decorative water features that do not recirculate the water
- Using outdoor irrigation during and 48 hours following measurable precipitation

What's Required for Business

- Restaurants and other food service establishments can only serve water to customers on request
- Hotels and Motels must provide guests with the option of not having towels and linens laundered daily



Water District Board Acts

- **30% reduction in water use through 2015**

(increased from 20% in 2014)

- **Water landscaping 2 days/week**



Almaden Reservoir



Governor Mandates Restrictions

- 25% reduction in water use-- mandatory
- Implement drought pricing
- Streamline drought projects
- Invest in new anti-drought technologies



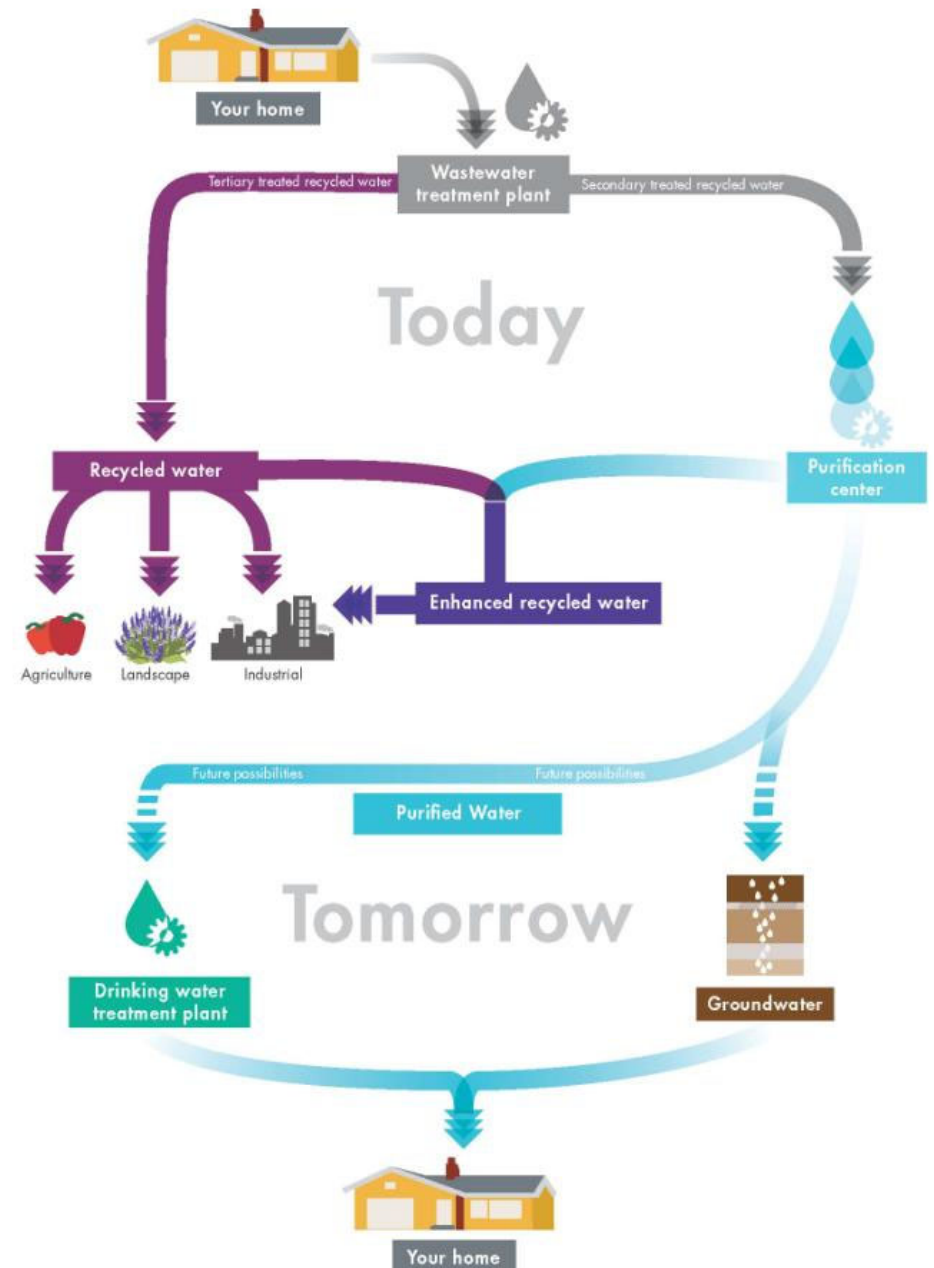
Next Steps for District Drought Response

- Increase water conservation
- Secure imported water supplies
- **Expand water recycling**
- Obtain state/fed funding for projects



How Sunnyvale Can Help With the Drought

- Call for 30% conservation
- Support expansion of recycled water
- Implement Drought Response
 - Water 2 days/wk
 - Update drought ordinance
- Attend Drought Summit: May 9





Questions?

Email: jfiedler@valleywater.org

www.valleywater.org/drought

