



FUTURE OF THE SUNNYVALE MAIN LIBRARY

Civic Center Phase 2: Planning – Main Library

City Council Study Session | Jan. 09, 2023



Agenda

- 1. Introduction and Roles**
- 2. Project Background and Goals**
- 3. Community Engagement**
- 4. Library Needs Assessment**
- 5. Draft Library Program**
- 6. Next Steps**



Dayton Main Library

Group 4 Team



DAVID SCHNEE
*Principal-in-Charge
Design Lead*



DAWN MERKES
*Principal
Engagement Lead*



ANDREA GIFFORD
*Principal
Needs Study / Interiors Lead*



JON HARTMAN
*Principal
Project Architect*



Public Works:
Chip Taylor, Jennifer Ng,
Allison Boyer

**Library and Recreation
Services:** Michelle Perera, Garrett
Kuramoto, Damon Sparacino

subconsultants





Spokane Central Library

Project Background

Civic Center Modernization

- The **Civic Center Master Plan** was adopted by City Council in 2018
- The Master Plan was broken into **three phases** for implementation
 - ◆ Phase 1: City Hall & Emergency Operations Center
 - ◆ **Phase 2: Main Library**
 - ◆ Phase 3: DPS Headquarters



Full Civic Center Master Plan Vision

SCALE: 1"=200'



Civic Center Master Plan Project Success Criteria



Improve the Quality of Services – Leaders in New Service Innovation



Fiscally Responsible



Accessible to All Members of Our Diverse Community



Civic and Community Engagement



Increase Usability of Open Space



Leaders in Sustainability

Phase 2 Project Overview

- **Funding for planning** is currently available for the Main Library.
- We are anticipating that an item will need to be placed on the **voter ballot** to raise the necessary funding.
- The focus right now is to **determine and prioritize needs** of the main library for current and future use.
- Next, the team will design **three concepts** that will be presented to Council in the spring. Council will choose a concept and decide whether that concept is placed on the ballot in November 2024.



Library Options that will be Explored

- **Renovate** Existing Library and Addition

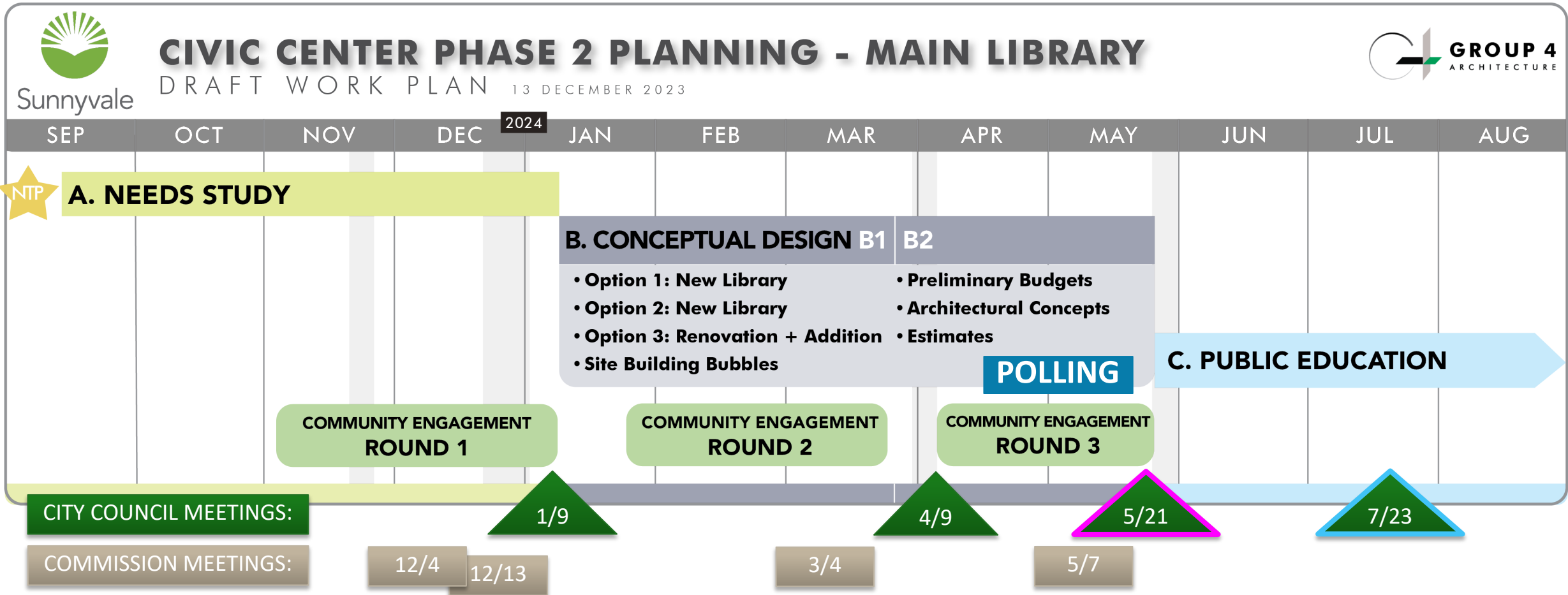


Library Options that will be Explored

- **New Library** that meets medium and high priorities
- **New Library** that meets all needs



Project Schedule & Work Plan



Project Development

Library of the Future Needs Study (2007)

- Children's Services: only **11%** of total space in library, lacking room for **display, seating, play, storytelling**
- Configuration of library **limits flexibility**
- **Technological demands** on facility exceed data wiring infrastructure
- Lacking in **group study rooms, self-contained teen area, presentation room** large enough for programs



Study and Strategy

VOLUME 1

Prepared in collaboration with the
Sunnyvale Public Library

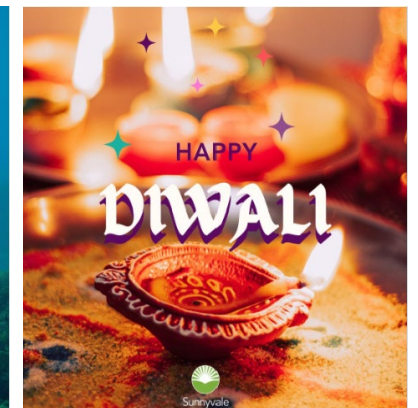
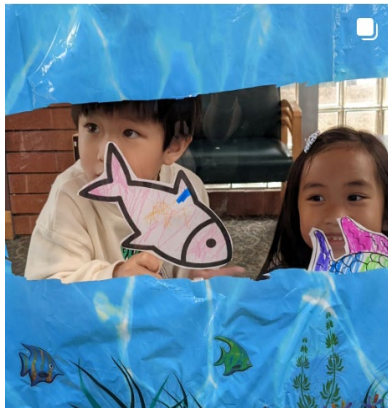
Published Date, December 13, 2006
Revised Date, June 28, 2007

by



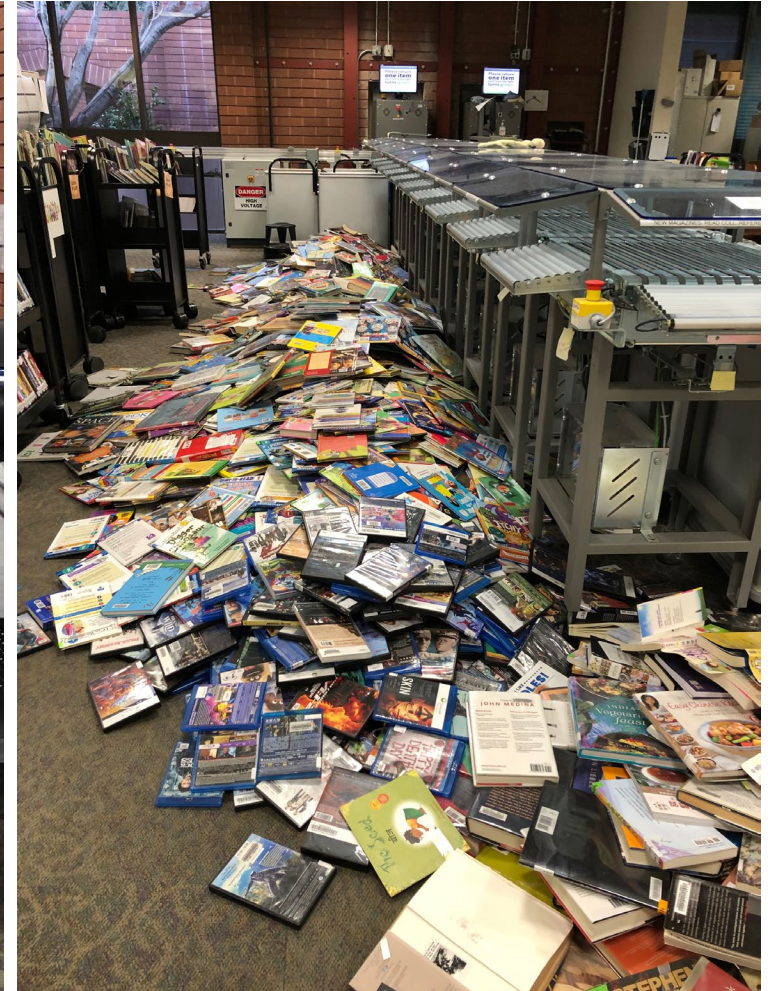
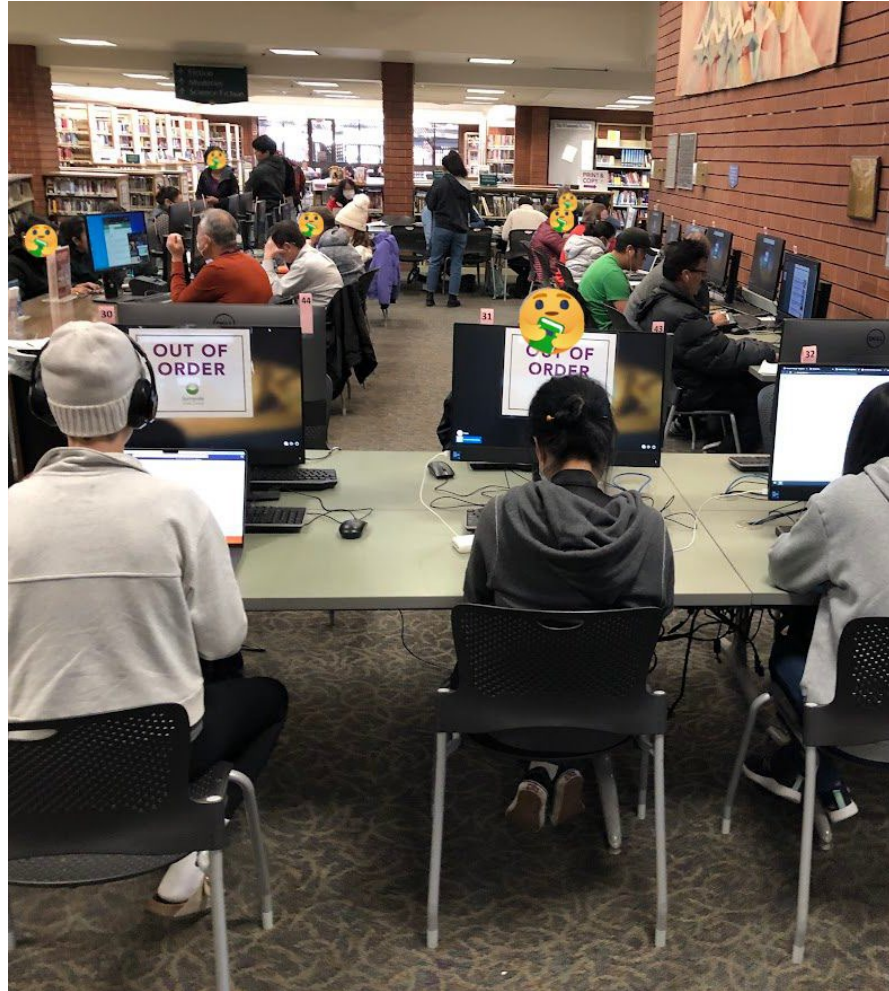
ANDERSON BRULE ARCHITECTS

Sunnyvale Library is vibrant, vital center of community life



We Have Outgrown the Facility

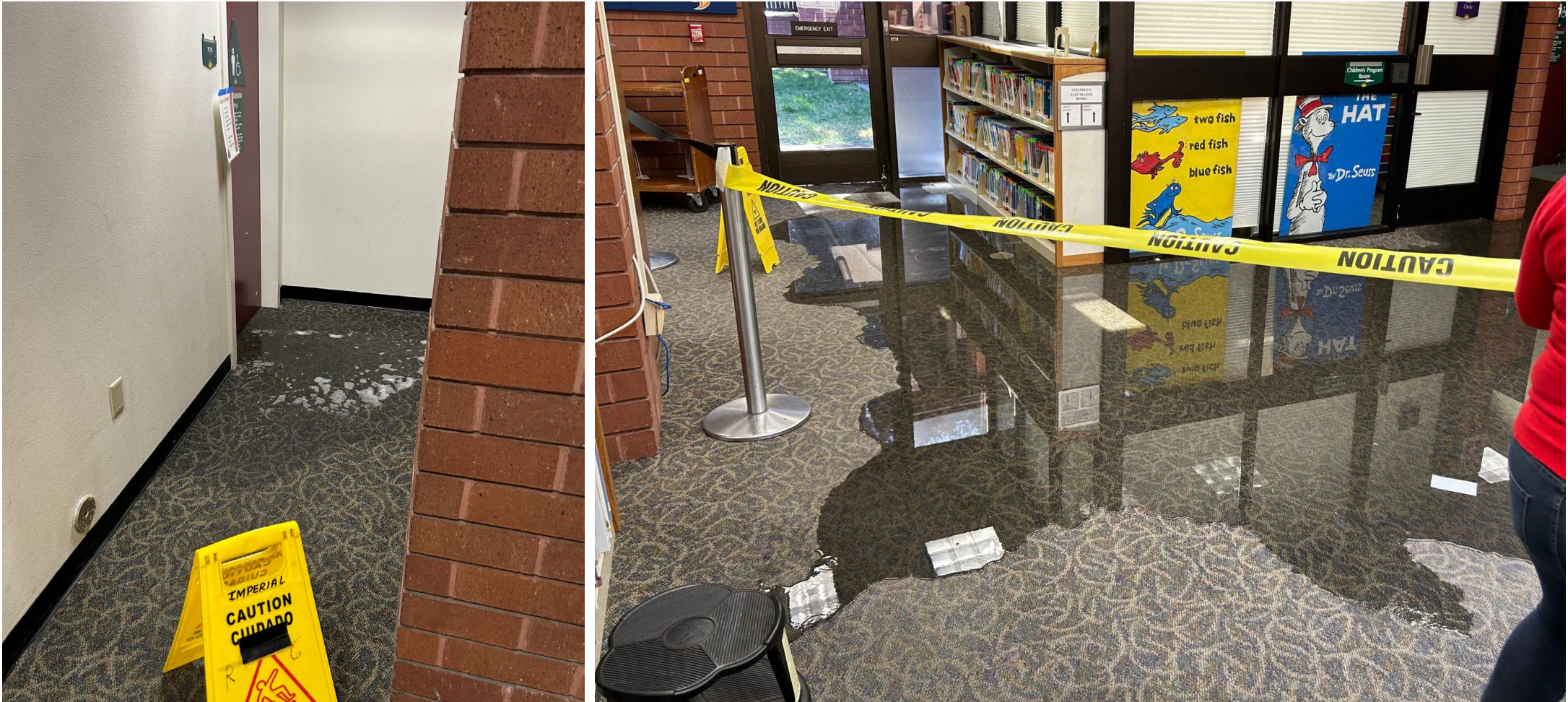
- Materials (books, videos, etc.)
- Program Space
- Technology



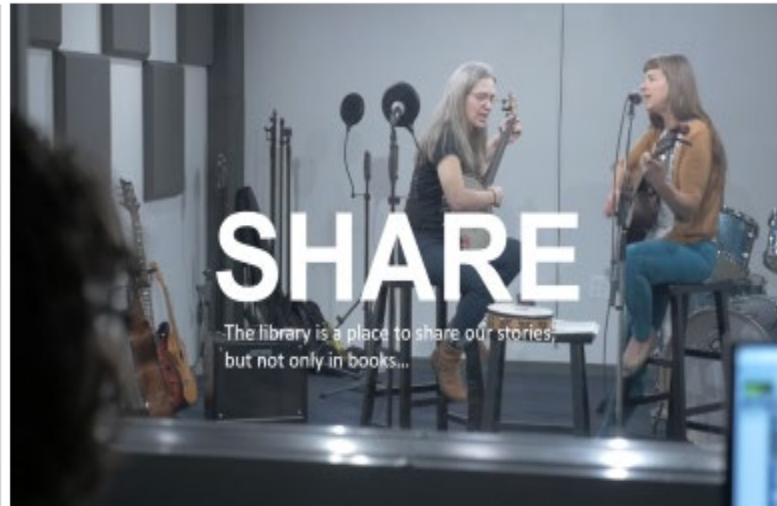
Current facility unable to meet program & service demand



Old Building in Need of Serious Maintenance



The Future of the Sunnyvale Main Library



A woman with long brown hair tied back, wearing a light blue t-shirt and dark pants, is sitting in a large, modern red armchair. She is looking towards the right. The chair has a thick, rounded back and thin metal legs. The floor is covered with a red and white checkered pattern. In the background, there are more red armchairs and a large window with a view of the outdoors. The ceiling is made of light-colored wood slats. The word "READ" is overlaid in large, white, sans-serif capital letters across the center of the image.


READ

Libraries will always be a place for people who love to read

A photograph of four children interacting with a large digital display. The display shows a dense field of falling pink petals. The children are standing in front of the screen, touching it. The child on the far left is wearing a pink shirt and pink pants. The child next to them is wearing an orange shirt and blue pants. The child next to them is wearing a white shirt and blue pants. The child on the far right is wearing a blue shirt with a rainbow heart and dark pants. The word "DISCOVER" is overlaid in large white letters across the middle of the image.

DISCOVER

The library is a place of discovery...

A photograph of a library study area. Three students are seated at a light-colored wooden table. On the left, a young man with long brown hair, wearing a light blue button-down shirt, is looking down at an open spiral notebook. In the center, a young man with curly brown hair, wearing a light blue polo shirt, is looking at a silver HP laptop. To his right, a young woman with dark hair pulled back, wearing a green jacket over a patterned top, is also looking at the laptop. A fourth student, a young woman wearing a red hijab and a yellow long-sleeved shirt, is standing on the right side of the frame, looking towards the seated students. The background features bright green acoustic panels. On the table in the foreground, there is a black backpack, a pair of black headphones, a box of tissues with a floral pattern, and some papers. The word 'STUDY' is overlaid in large white letters, and the text 'the Library is an essential place to study...' is overlaid in smaller white letters below it.

STUDY

the Library is an essential place to study...

The library is also a place to create

MAKERSPACE

Rockwood Library
1007 E Main St
Cedar Rapids, IA 52404

September 2016

For grades 6-12.

Sunday	Monday	Tuesday	Wednesday	Thursday	Friday	Saturday
				1 Open Lab 3-6 pm	2 Open Lab 3-6 pm	3 Open Lab 10 am-midnight Project Hall 3-8 pm
	5 MONDAY	6 TUESDAY Open Lab 3-6 pm Cut, Stick and Wire Wednesday 3-6 pm	7 WEDNESDAY Open Lab Wire Wednesday 3-6 pm	8 THURSDAY Open Lab 3-6 pm	9 FRIDAY Open Lab 3-6 pm	10 SATURDAY Open Lab 10 am-midnight Animals Anything 3-8 pm
	12 MONDAY	13 TUESDAY Open Lab 3-6 pm	14 WEDNESDAY Open Lab Wire Wednesday 3-6 pm	15 THURSDAY Open Lab 3-6 pm	16 FRIDAY Open Lab 3-6 pm	17 SATURDAY Open Lab 10 am-midnight Let's Tinker Around 3-8 pm
18 SUNDAY	19 MONDAY Open Lab 3-6 pm	20 TUESDAY Open Lab 3-6 pm Cut, Stick and Wire Through 4-7:45 pm	21 WEDNESDAY Open Lab Wire Wednesday 3-6 pm	22 THURSDAY Open Lab 3-6 pm	23 FRIDAY Open Lab 3-6 pm	24 SATURDAY Open Lab 10 am-midnight Continue Drawing 3-6 pm
25 SUNDAY	26 MONDAY Imagining Camp 4-5:30 pm	27 TUESDAY Imagining Camp 4-5:30 pm	28 WEDNESDAY Imagining Camp 4-5:30 pm	29 THURSDAY Imagining Camp 4-5:30 pm	30 FRIDAY Imagining Camp 4-5:30 pm	

Open Lab:
When will you visit? Bring your ideas, materials, equipment or plan to get them with friends! Open lab hours are 3-6pm on Wednesdays.

Making Workshops:
Learn new skills, make your own projects and share yours with others!

Cut, Stick and Wire:
Learn how to cut, stick and wire with a variety of tools and materials.

Maker Camp:
Join us for a day of fun and learning! We'll have workshops, demos, and more!

Maker Space:
A place where you can learn, create, and share your ideas. We have everything you need to get started!

Library

Community Learning Center

Public Library

A photograph of two women in a recording studio. The woman on the left, with long grey hair and glasses, is seated and playing a mandolin. The woman on the right, with brown hair, is seated and singing into a microphone while playing an acoustic guitar. The studio has soundproofing panels on the wall, microphones on stands, and various instruments like a double bass and drums in the background. A large white text overlay is centered over the image.

SHARE

The library is a place to share our stories,
but not only in books...

GATHER

The library is a place to gather and connect with others



Our Community Engagement Process

Engaging the Community

- Pop Up Kiosks at Local Events
- iPad Kiosks at the Main Library & Recreation Center
- Online Community Survey

For more information, visit: Sunnyvale.ca.gov,
Search: Future Main Library

WHAT IS YOUR VISION
FOR OUR FUTURE
MAIN LIBRARY?

¿CUÁL ES TU VISIÓN
PARA LA NUEVA
BIBLIOTECA PRINCIPAL?

你對主圖書館的
構想是什麼?

Over 2,500
community
members
participated to
date!



Our Community Engagement Process

Commissions Presentations Highlights

- Ensure community engagement is **accessible** for hard-to-reach populations and diverse areas of the community
- **PDF funds** may be utilized for the new open space features
- Maximum 4 floors in height, EIR looked at **2 floors** – will analyze
- Continue hosting a **welcoming space** for people who are experiencing houselessness and/or unemployment
- Create **flexible, adaptable** space for **future generations**
- Integrate outdoor space for library programming
- Balance community **wants** vs community **needs**
- Pursuing **LEED Gold Equivalent** or higher

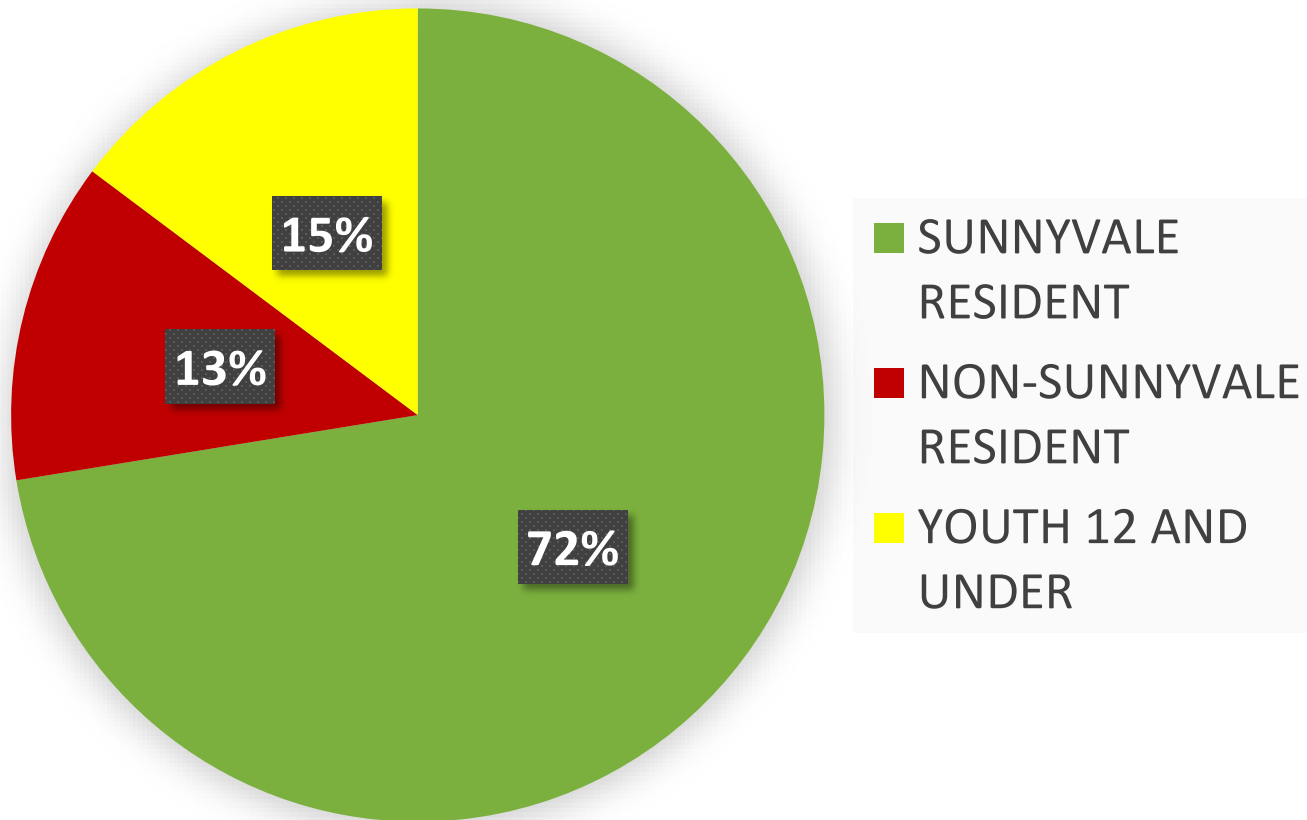


Community Engagement Process To Date

Past + Existing Engagements	When	Participants
Library Standing Kiosk	November 10-January 12	510
Rec Center Standing Kiosk	November 10-January 12	31
Sunnyvale Farmer's Market	Saturday, November 18, 9am-1pm	181
Friends of the Library Book Sale	Saturday, November 18	130
Winter Wonderland	Saturday, December 2, 9am-12pm	140
Downtown Tree Lighting	Saturday, December 2, 5pm-7:30pm	135
Library: Ipad Kiosk	November 10 – January 12	Total Online Survey: 1,165
Community Center: Ipad Kiosk	November 28 – January 12	
Board of Library Trustees	Monday, December 4, 7pm	
Parks and Recreation Commission	Wednesday, December 13, 7pm	
Winter Wellness	Saturday, December 16	95
Sunnyvale Farmer's Market	Saturday, December 16, 9am-1pm	135
City Council Study Session	Tuesday, January 9, 5:30pm	
Survey Closes	Friday, January 12	Total as of 01/03: 2,522



Who has participated?



Community Organizations We've Reached out to:

- Sunnyvale Neighborhood Associations
- Sunnyvale Community Services
- Sunnyvale Elementary School District
- YMCA
- Rotary Club
- Lions Club
- Library Newsletter
- Recreation Activities Guide
- Update Sunnyvale

Program Options

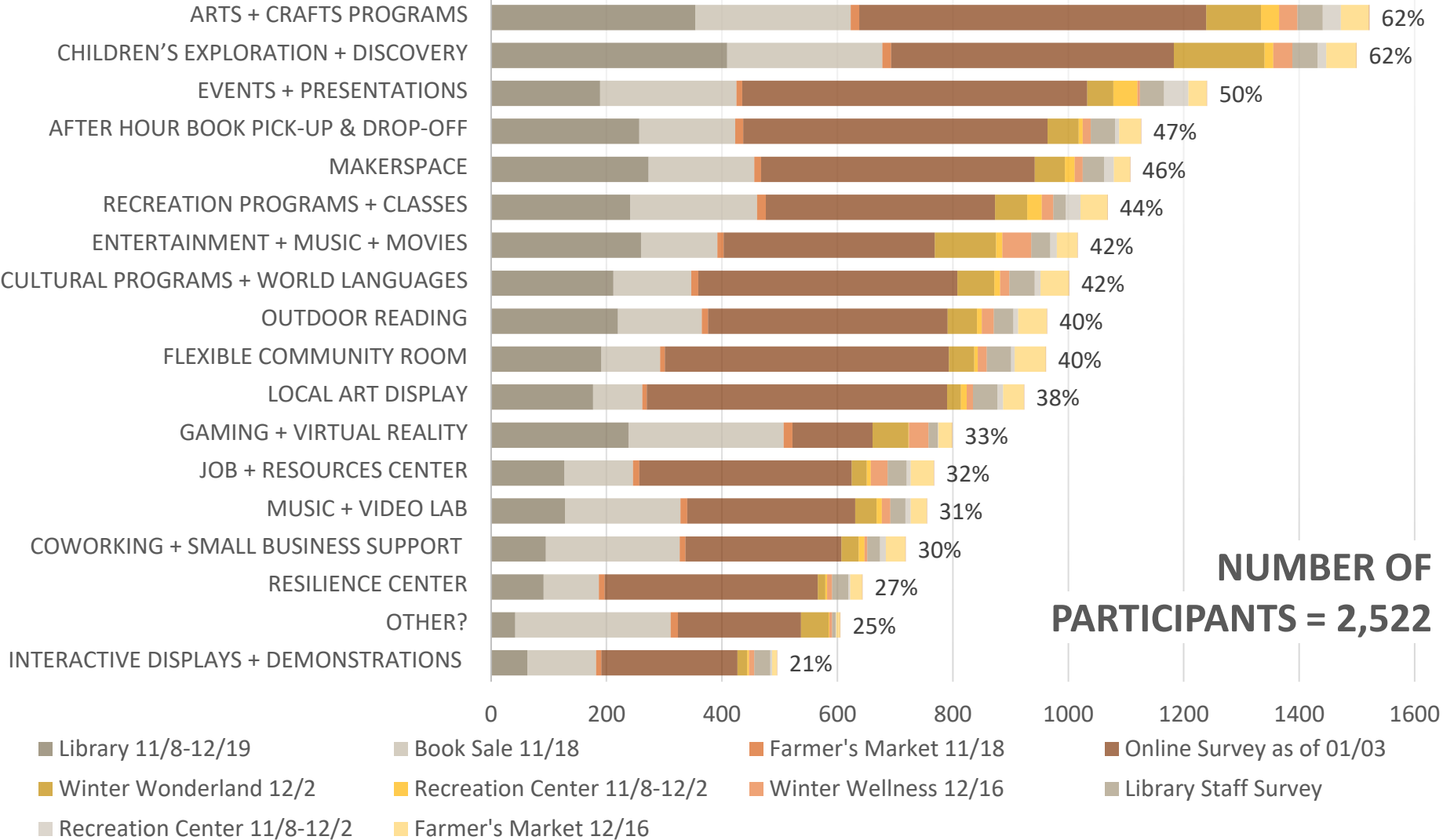
CHILDREN'S & ART are high priority for the community



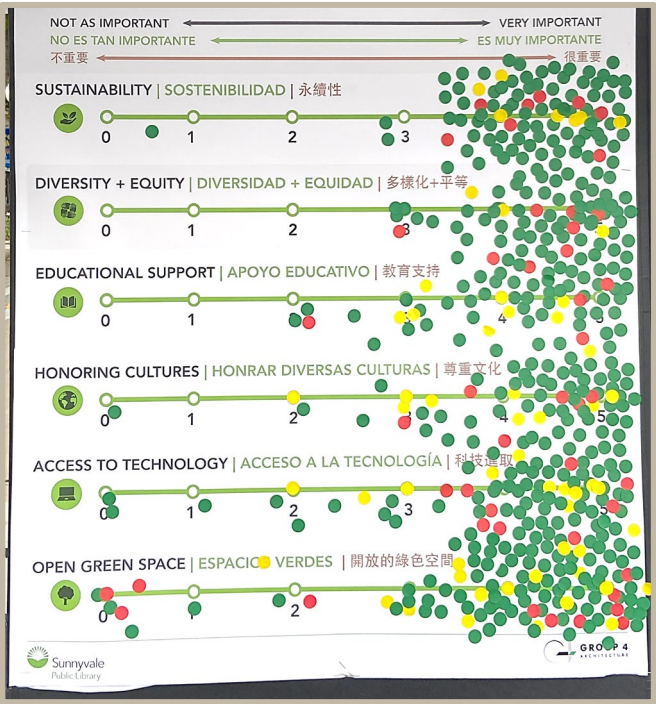
ARTS + CRAFTS PROGRAMS
PROGRAMAS DE ARTES +
MANUALIDADES
藝術 + 工藝品項目



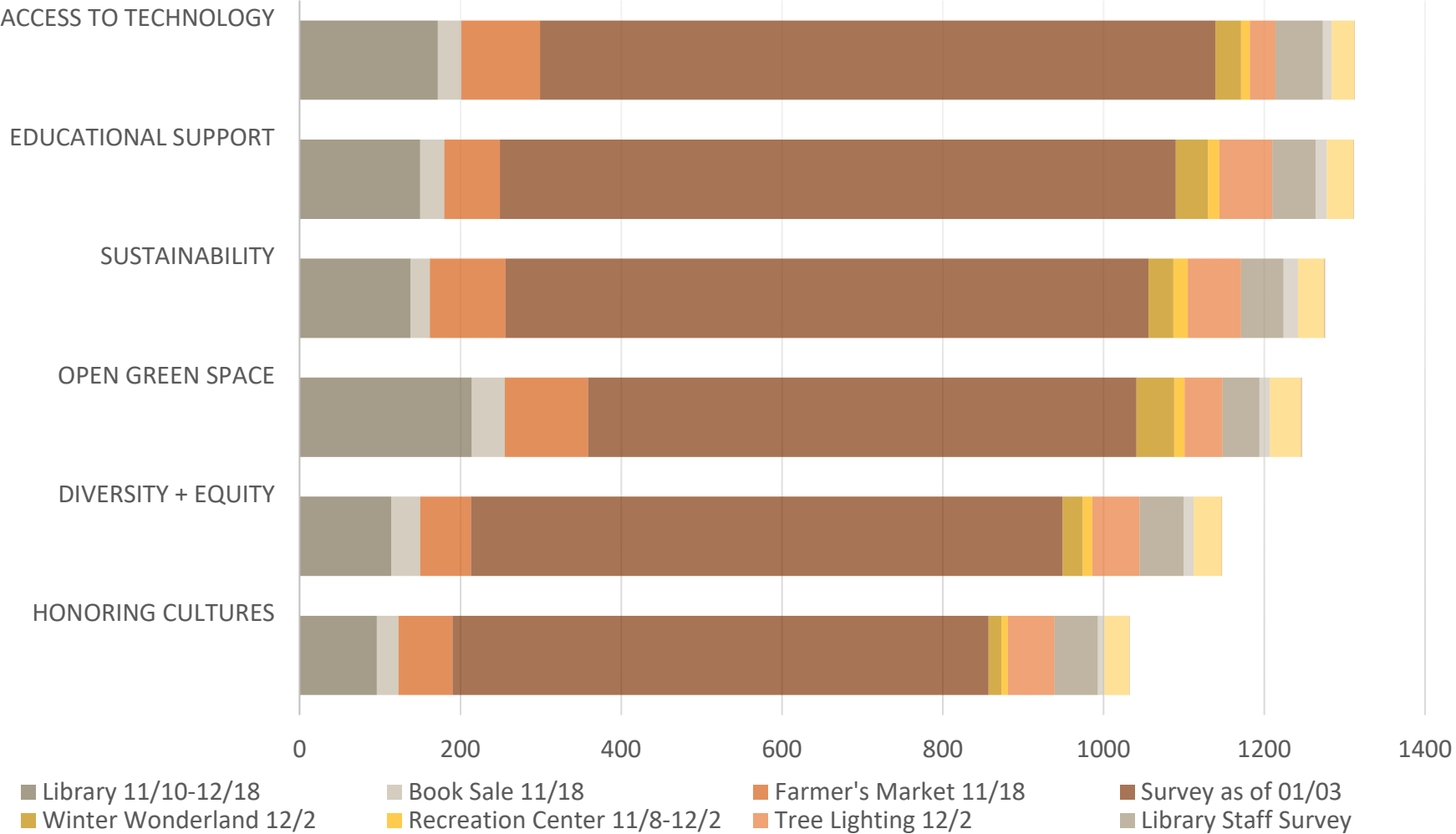
CHILDREN'S EXPLORATION +
DISCOVERY
ÁREA DE EXPLORACIÓN +
DESCUBRIMIENTO PARA NIÑOS
兒童探索+發現



Community Values



All six values are high priority for the community



Take our Round 1 Community Survey!

FUTURE OF THE SUNNYVALE MAIN LIBRARY

EL FUTURO DE LA BIBLIOTECA CENTRAL DE SUNNYVALE

桑尼維爾圖書館的未來



WHAT IS YOUR VISION FOR OUR FUTURE MAIN LIBRARY?

The Sunnyvale Main Library is a vital place for culture, connection, and life-long learning within our community. Built in 1960, the Library has not been renovated since 1983. We are not able to meet community demand for programs and services with the current facility. We are exploring revitalizing the Library as part of the Civic Center Modernization project. We want to hear your thoughts to ensure the project meets the needs of the community. *Let's bring this vision to life together!*

¿CUÁL ES TU VISIÓN PARA LA NUEVA BIBLIOTECA PRINCIPAL?

La Biblioteca Central de Sunnyvale es un lugar vital de cultura, conexión y aprendizaje para nuestra comunidad. Fue construida en 1960 y no ha sido renovada desde 1983. Actualmente no podemos satisfacer la demanda de programas y servicios con las instalaciones existentes. Estamos explorando la revitalización del edificio como parte del proyecto de Modernización del Centro Cívico. Queremos tu opinión para asegurarnos que el proyecto cubra las necesidades de la comunidad. *¡Demos vida juntos a esta visión!*

你對主圖書館的構想是什麼?

桑尼維爾圖書館是為我們的社區提供文化、連結和終身學習最重要的地方。建成於1960年的圖書館，距離上次1983年的翻修也已經過了很久。我們現有的設施已經無法滿足社區對於活動和服務的需求。作為市政現代化計畫的一部分，桑尼維爾正在積極為圖書館注入新的活力。我們希望聆聽你的想法，以確保該計畫能滿足社區的需求。讓我們共同將願景變成現實!

BEGIN BY PLACING YOUR DOTS ON OUR INTERACTIVE BOARDS BELOW...

COMIENZA COLOCANDO TUS PUNTOS EN NUESTROS TABLEROS INTERACTIVOS...

請把你手中的圓點貼在我們下方的互動板上...

HOW OFTEN DO YOU USE THE LIBRARY?

¿CON QUÉ FRECUENCIA UTILIZAS LA BIBLIOTECA?

你多久使用一次圖書館?

NEVER NUNCA 從不	QUARTERLY TRIMESTRAL 每季一次	MONTHLY MENSUAL 每月一次	WEEKLY SEMANALMENTE 每週一次	DAILY DIARIAMENTE 每天一次
----------------------	---------------------------------	----------------------------	--------------------------------	------------------------------

HOW DO YOU GET TO THE LIBRARY?

¿CÓMO LLEGAS A LA BIBLIOTECA?

你怎麼前往圖書館?

WALK CAMINANDO 走路	BIKE / SCOOTER EN BICICLETA O MONOPATÍN 自行車/摩托車	PUBLIC TRANSIT TRÁNSITO PÚBLICO 大眾運輸	CAR AUTO / CARRO 私家車	OTHER OTRO 其他
-------------------------	---	--	----------------------------	---------------------

FUTURE OF THE SUNNYVALE MAIN LIBRARY

EL FUTURO DE LA BIBLIOTECA CENTRAL DE SUNNYVALE

桑尼維爾圖書館的未來

WHAT WOULD YOU LIKE TO SEE IN THE NEW LIBRARY?

-Vote with dots for all that apply

¿QUÉ TE GUSTARÍA VER EN LA NUEVA BIBLIOTECA?

-Vota con puntos por todo lo que te guste

你希望在新圖書館看見什麼?

-用點投票給所有符合的情況



MAKERSPACE
ESPACIO DE CREACIÓN
手工勞動空間



MUSIC + VIDEO LAB
LABORATORIO DE MÚSICA + VIDEO
音樂 + 影片實驗室



COWORKING + SMALL BUSINESS SUPPORT
ESPACIO DE TRABAJO + APOYO A PEQUEÑAS EMPRESAS Y EMPRENDIMIENTOS
合作 + 小型商業產業支持



EVENTS + PRESENTATIONS
EVENTOS + PRESENTACIONES
大型活動 + 演示



RECREATION PROGRAMS + CLASSES
PROGRAMAS DE RECREACIÓN + CLASES
娛樂項目 + 課程



ARTS + CRAFTS PROGRAMS
PROGRAMAS DE ARTES + MANUALIDADES
藝術 + 工藝品項目



GAMING + VIRTUAL REALITY
VIDEO JUEGOS + REALIDAD VIRTUAL
遊戲 + 虛擬現實



CHILDREN'S EXPLORATION + DISCOVERY
ÁREA DE EXPLORACIÓN + DESCUBRIMIENTO PARA NIÑOS
兒童探索 + 發現



OTHER?
¿ALGO MÁS?
其他?



SURVEY OPEN UNTIL JANUARY 12

<https://www.surveyhero.com/c/SVMLCommunitySurveyRound1>

Library Experiences and Places

BROWSING
DISCOVER
INSPIRE



CHILDREN
LEARN
PLAY



TWEEN
STUDY
HANGOUT



TEEN
ENGAGE
CHILLOUT



ADULT
BROWSE
RELAX



MEET
GATHER
INTERACT



STUDY
FOCUS
SHARE



MAKER
TINKER
INVENT



LEARN
PARTNER
REFLECT



CREATE
INNOVATE
IMAGINE



STAFF SERVICE
FRIENDLY
CONVENIENT



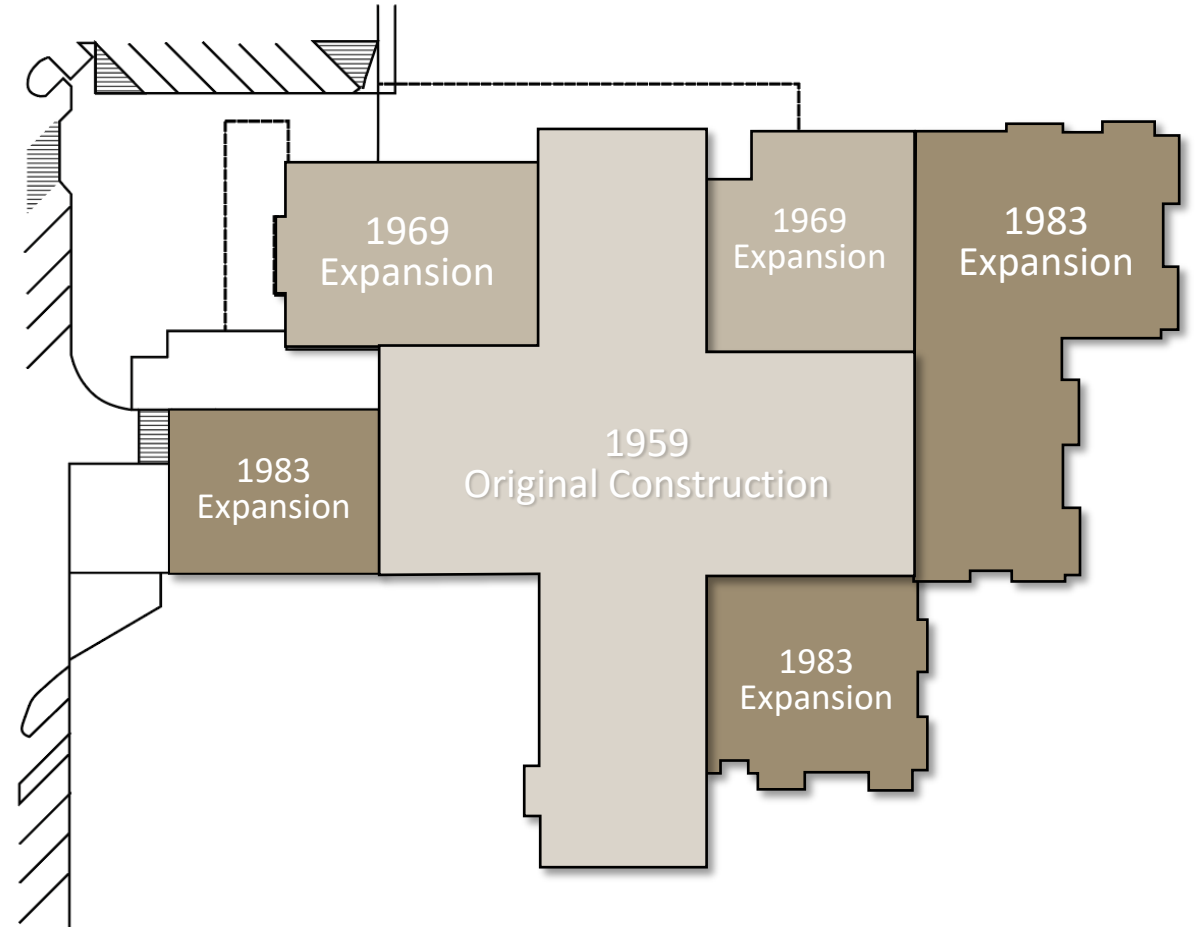
PLAZA
COMMUNITY
GROW



The library has not kept up with community growth

Expansions over Time

- Built in 1959, the Library has been expanded twice to double its original size
- But Sunnyvale **population has more than tripled!**



Library Spaces → Building Program

- We have prepared a building program that is scalable so that cost and funding can be balanced



CITY OF SUNNYVALE
BUILDING PROGRAM
Sunnyvale Main Library

DRAFT
11/27/2023

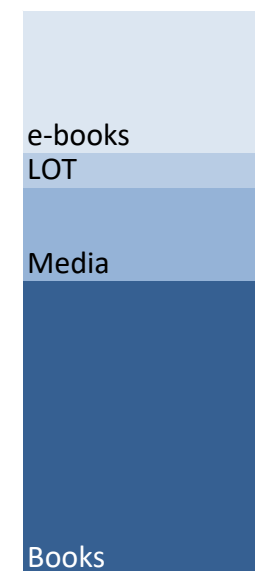
SPACE	QTY	TOTAL ITEMS	% IN CIRC	ITEMS ON SHELVES	LF OF SHELVING	# OF DF STACK UNITS	NSF/UNIT	BALANCE FACTOR	TOTAL SF
1 ENTRY									
1a Vestibule	2						120		200
Lobby	1						1,000		1,000
Community Gallery	1						500		500
Community Partner & Service Room/Office	1						150		150
Passport Office	1						150		150
1b Friends Book Store	1						200		200
TOTAL									2,220
2 BROWSING									
2a Service Point									
SERVICE DESK	1						150		150
SELF-CHECK STATIONS	4						25		100
HOLDS				5,000	625	21	18		375
2b Collection									
NEW BOOKS & MEDIA		50,000	40%	30,000	3,750	125	24	100%	3,000
2c Seating	1						3,000		3,000
ADULT SEATING (LOUNGE + READER TABLES)									
COLLABORATIVE AREA									
2d Quick Access Computers									
PUBLIC COMPUTERS	12								
TOTAL (does not include Holds)		50,000							
3 MEETING AND STUDY ROOMS									
3a Event/Performance Room (inc. stage)	1								
Prefunction	1								
Kitchenette	1								
Meeting Room Storage	1								
3d Meeting Room	2								
Meeting Room Storage	2								
3b MakerSpace	1								
Meeting Room Storage	1								
3c Create Room(s)	1								
Meeting Room Storage	1								
3d Blackbox Theater	1								
Prefunction	1								
Meeting Room Storage	1								
3e Partner Space	1								
Meeting Room Storage	1								
3f Conference Room	2								
3g 2-Person Study Room	8								
3h 4-Person Study Room	8								
3i 8-Person Study Room	2								
TOTAL									
4 ADULT AREA									
4a Adult Service									
SELF-CHECK STATIONS	2								
SERVICE DESK	1								
4b Adult Collection									
BOOKS		154,000	10%						
SPECIAL COLLECTIONS		15,000	0%						
4b Seating									
ADULT SEATING	1								
HISTORY & CULTURE READING ROOM	1								
4c Adult Area Computers									
PUBLIC COMPUTERS	12								
PAC	4								
4d Reading									
QUIET READING ROOM	40								
TOTAL		200,000							
5 CHILDREN'S AREA									
5a Children's Service									
SELF-CHECK STATIONS	2								
SERVICE DESK	1								
5b Children's Collection									
CHILDREN'S BOOKS		150,000	20%						
TWEEN BOOKS		25,000	20%						
5c Seating									
CHILDREN'S SEATING									
TWEEN SEATING									
NURSING/SENSORY SPACE	1								
5d Children's Area Computers									
PUBLIC COMPUTERS	12								
AWE PUBLIC COMPUTERS	6								
PAC	4								
6 TEEN AREA									
6a Teen Service									
SELF-CHECK STATIONS	2						25		50
SERVICE DESK	1						80		80
6a Teen Collection									
BOOKS		25,000	20%	20,000	2,500	83	18		1,500
6b Seating									
TEEN SEATING							1,500	100%	1,500
6c Teen Area Computers									
PUBLIC COMPUTERS	6						25		150
6c Homework Area									
PUBLIC COMPUTERS	40						20		800
TOTAL		25,000		20,000					4,000
7 STAFF									
7a Admin Staff									
LIBRARY DIRECTOR	1						240		240
LIBRARY MANAGER	9						120		1,080
7b Staff Workstations									
ADULT STAFF WORKSTATIONS	20						80		1,600
ADULT STAFF WORKROOM	1						400		400
CHILDREN'S/YOUTH STAFF WORKSTATIONS	14						80		1,120
CHILDREN'S/YOUTH STAFF WORKROOM	1						400		400
CIRCULATION STAFF WORKSTATIONS	10						80		800
CIRCULATION STAFF WORKROOM	1						400		400
SPECIAL COLLECTIONS STAFF WORKSTATIONS	2						80		160
SPECIAL COLLECTIONS STAFF WORKROOM	1						400		400
ADMIN STAFF WORKSTATIONS	4						80		320
ADMIN STAFF WORKROOM	1						200		200
7d AMN/Sorting	1						800		800
7d Break Room	1						400		400
7e Foundation Office	1						150		150
7e Friends Book Storage and Workroom	1						600		600
7f Staff Restrooms	2						70		140
7g Nursing/Wellness Room	1						70		70
7h Library Storage/Staff Storage	1						150		150
TOTAL									9,440
8 NON-ASSIGNED SPACES									
8a All-Inclusive Single Occupancy Restrooms	2						70		140
8b Family Restroom (located in Children's Area)	2						70		140
8c Mens & Womens Restroom	4						400		1,600
8d Mechanical	2						500		1,000
8e Electrical	2						500		1,000
8f Telecommunications Room	3						150		450
8g Building Storage	1						400		400
8h Janitor's Closet	2						100		200
TOTAL									4,930
SUBTOTAL									190,255
Building Non-Assignable Allowance							20%		20,001
TOTAL GROSS SQUARE FEET									120,306 GSF
		450,000 Items		371,600 Items		1,423 DF units			

Collections will have space to grow to meet demand



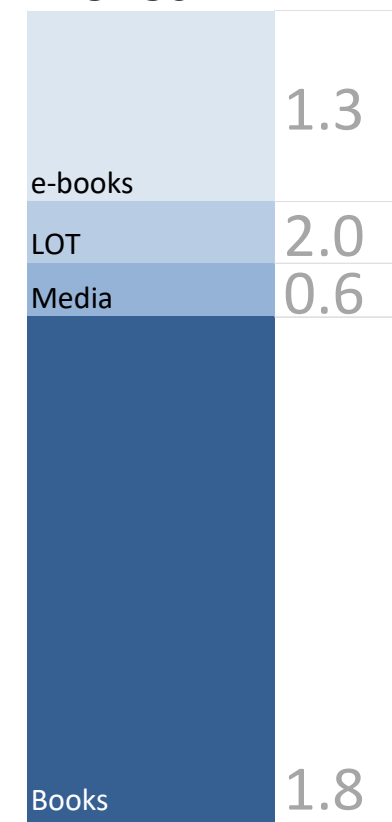
DRAFT

TODAY



350,000 items

PROPOSED



450,000 items

Library Spaces → Building Program

BROWSING



ADULT



CHILDREN & TWEEN



MEET &
STUDY & FLEX



TEEN



MAKE &
CREATE



Approximate size of program areas shown include prorated share of building support spaces.
All areas subject to change.

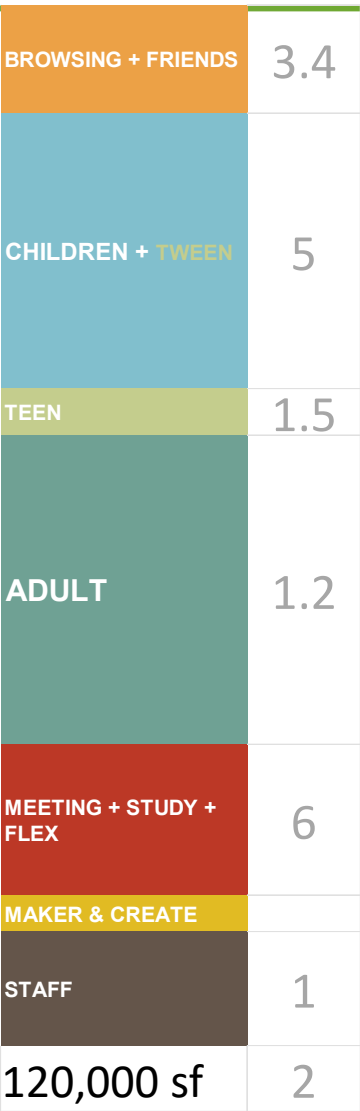
DRAFT

TODAY

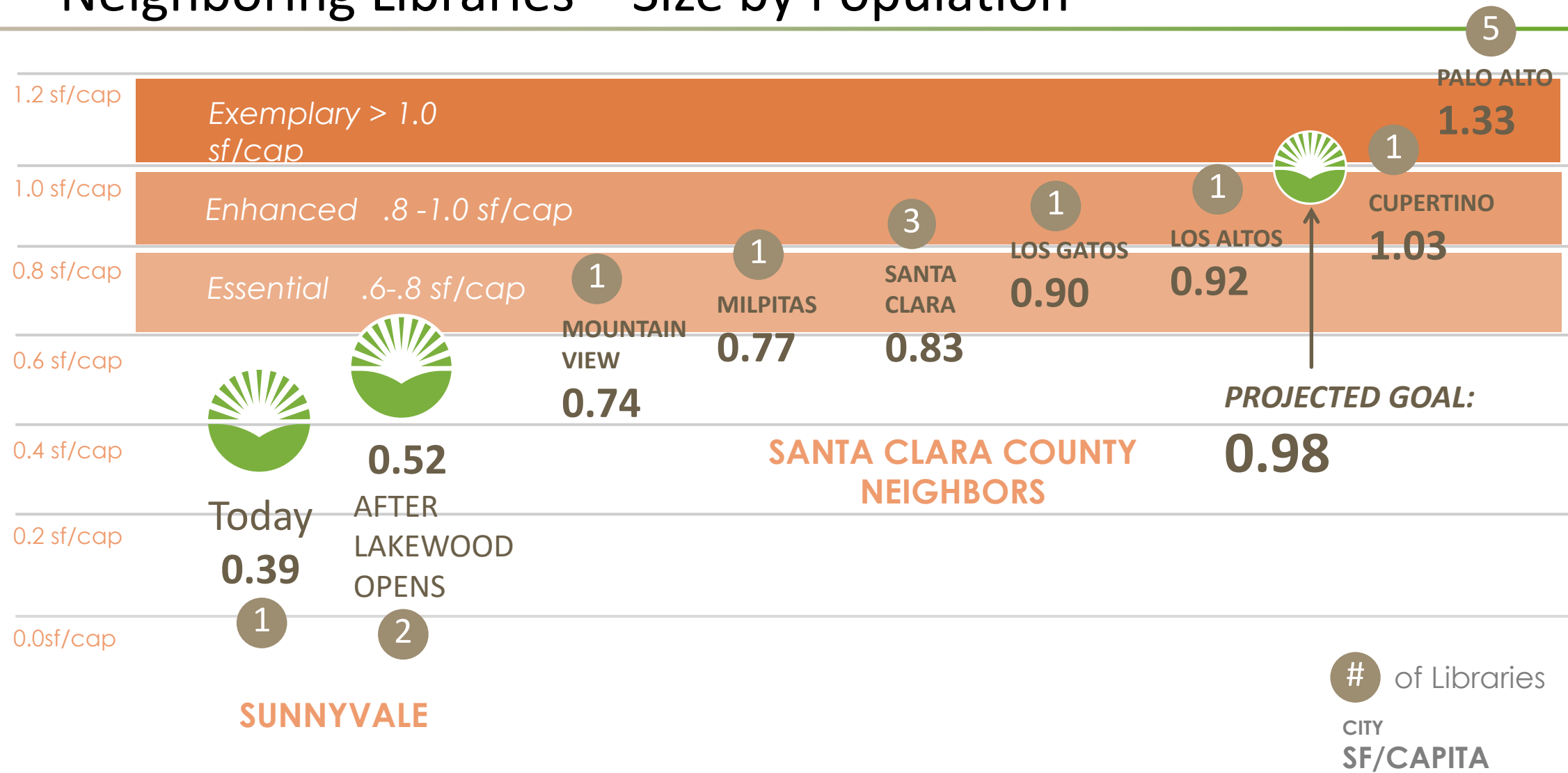


60,800 sf

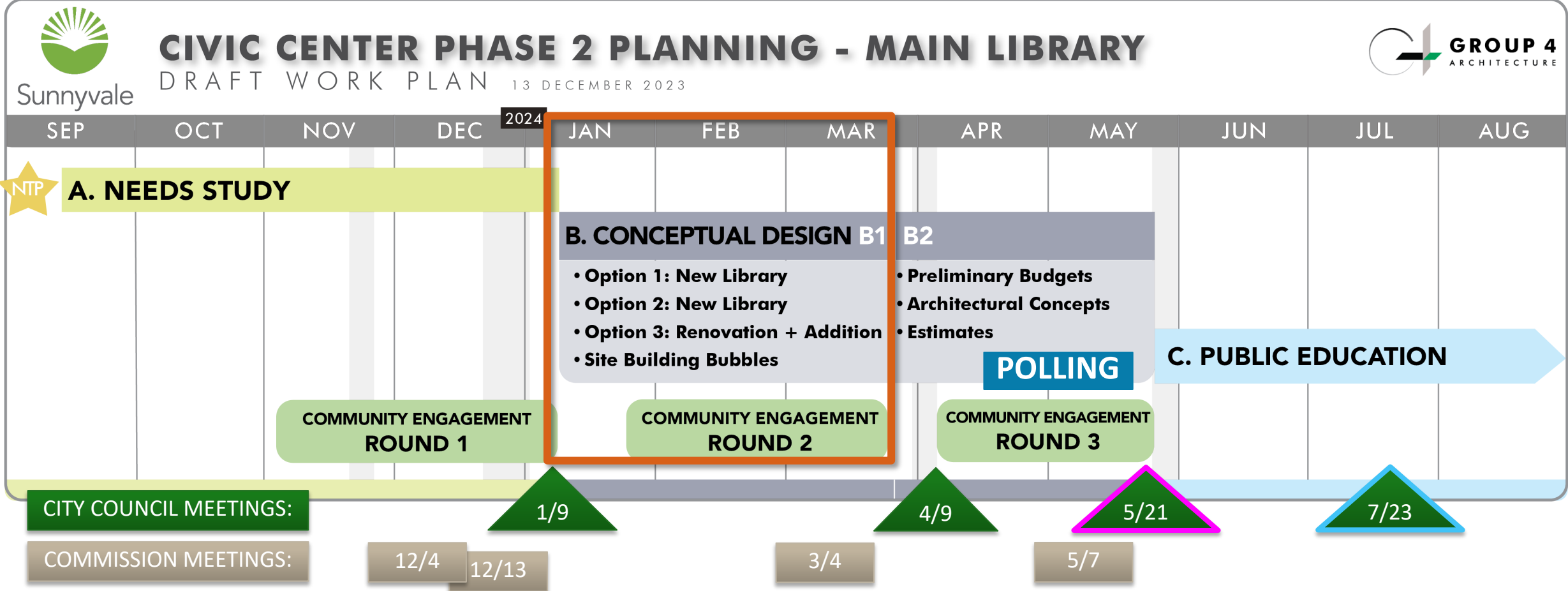
PROPOSED



Neighboring Libraries – Size by Population



Next Steps



City Council Feedback – Main Library Needs & Values

Top priorities identified by the community are Children's Area and Arts

Top 3 values are: access to technology, educational support, and sustainability

INPUT:

- Confirm current direction
- Other priorities/values not expressed?



THANK YOU!