

Lighting Notes:

Fixtures are to be mounted at the top of the art pieces to ensure the lighting angle is downward to be sensitive to dark sky.

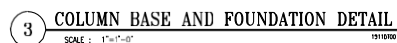
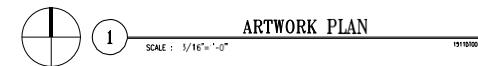
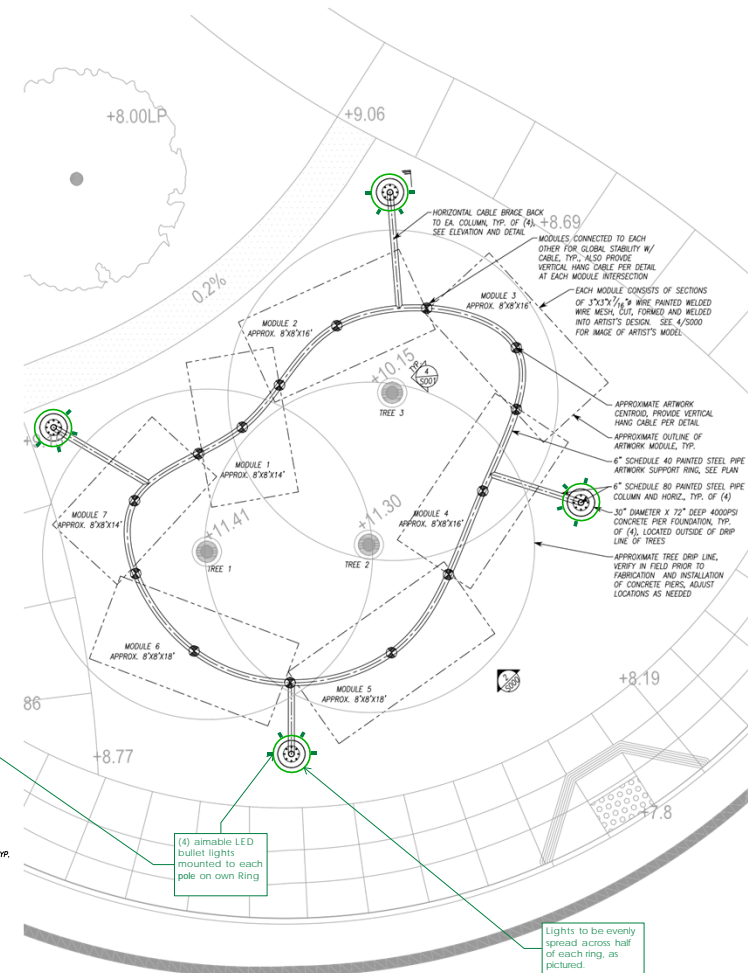
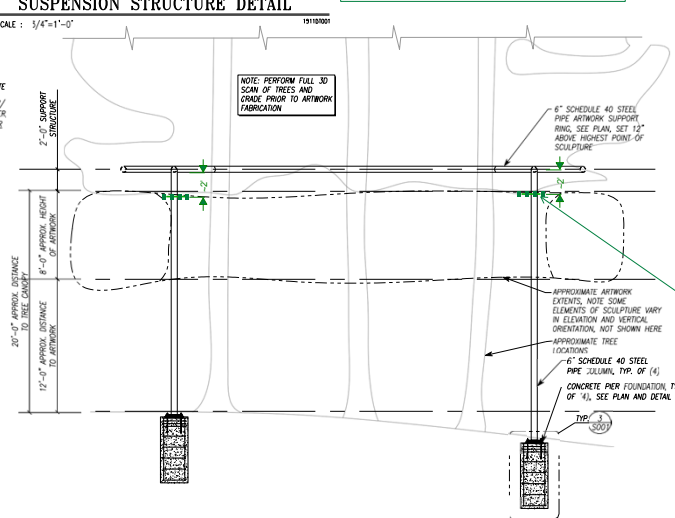
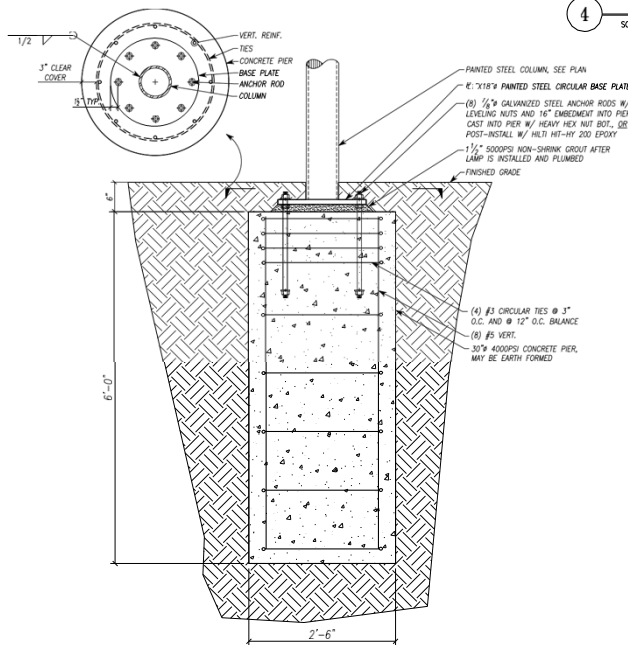
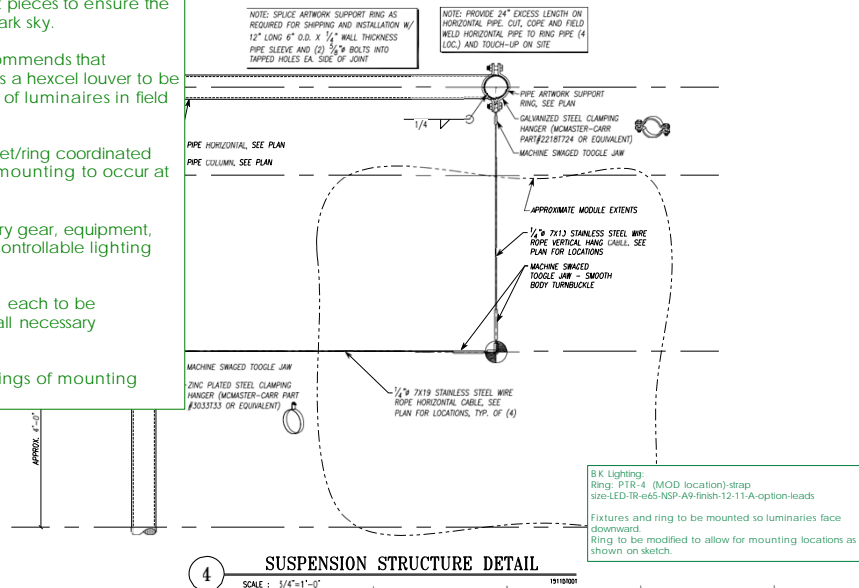
Lights will need to be aimed in field. HLB recommends that contractor order multiple lens options as well as a hexcel louver to be able to adjust the beam and surface brightness of luminaires in field during aiming.

Lights are to be mounted to a mounting bracket/ring coordinated with manufacturer and contractor to allow for mounting to occur at columns. Power to be run within steel column.

Contractor to coordinate location of all necessary gear, equipment, etc as required to make a fully functional and controllable lighting installation.


Lights are to be fully dimmable to 1% dimming, each to be individually dimmable. Contractor to provide all necessary equipment for dimming installation.

Contractor to provide manufacturer shop drawings of mounting condition for design team review and approval.



THESE DRAWINGS ARE TO BE USED IN CONJUNCTION WITH THE ARCHITECTURAL DRAWINGS ON THE PROJECT TO CLEARLY DEFINE ALL OF THE REQUIREMENTS FOR CONSTRUCTION. WHERE CONFLICTS OCCUR, CONTACT THE ARCHITECT FOR CLARIFICATION.

**DISCLAIMER:** THE PROFESSIONAL ENGINEERS SEAL ON THIS DRAWING INDICATES THAT THE INFORMATION SHOWN AND THE CALCULATIONS, PREPARING TO THE INFORMATION HAVE BEEN PREPARED BY QUALIFIED PERSONS UNDER THE DIRECTION OF THE ENGINEER-OF-RECORD. THE SEAL DOES NOT APLY RESPONSIBILITY FOR INFORMATION PREPARED BY OTHERS NOR FOR ANY INFORMATION NOT SHOWN ON THIS DRAWING. SUCH RESPONSIBILITY IS SPECIFICALLY DISCLAIMED. ON PHASED PROJECTS, DRAWINGS THAT ARE ISSUED BUT NOT SEALED SHALL BE CONSIDERED TO BE PRELIMINARY IN NATURE AND ARE ISSUED FOR INFORMATION ONLY.

 <b>yetiworks</b> ART + ENGINEERING 503.664.7553   yetiworks@gmail.com <a href="http://www.yetiworks.com">www.yetiworks.com</a>	<b>TITLE:</b> <i>EXAMPLE OF ARTWORK SUPPORTED</i> <b>BY TWO TREES</b>
	<b>PROJECT NAME:</b> Catherine Widgery - Java Public Art Java Dr. & Bordeaux Dr, Sunnyvale, CA 94089
	<b>OWNER:</b> NAC
	<b>SCALE:</b> AS NOTED

**S001**