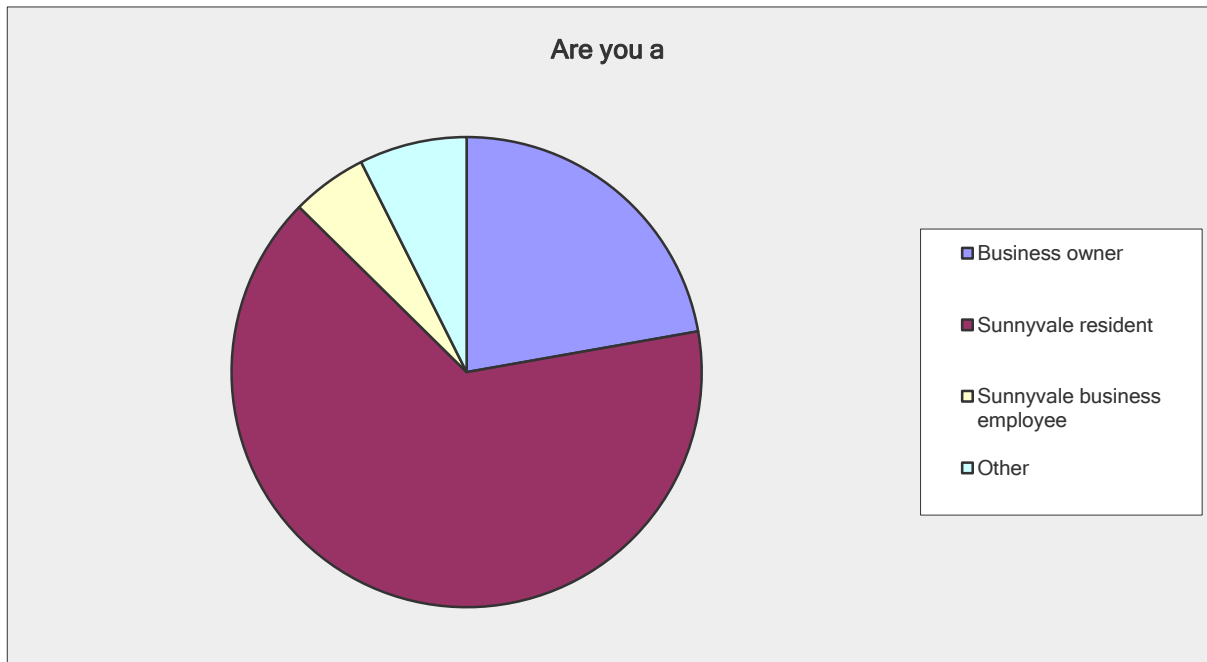


## MINIMUM WAGE SURVEY OVERALL RESULTS

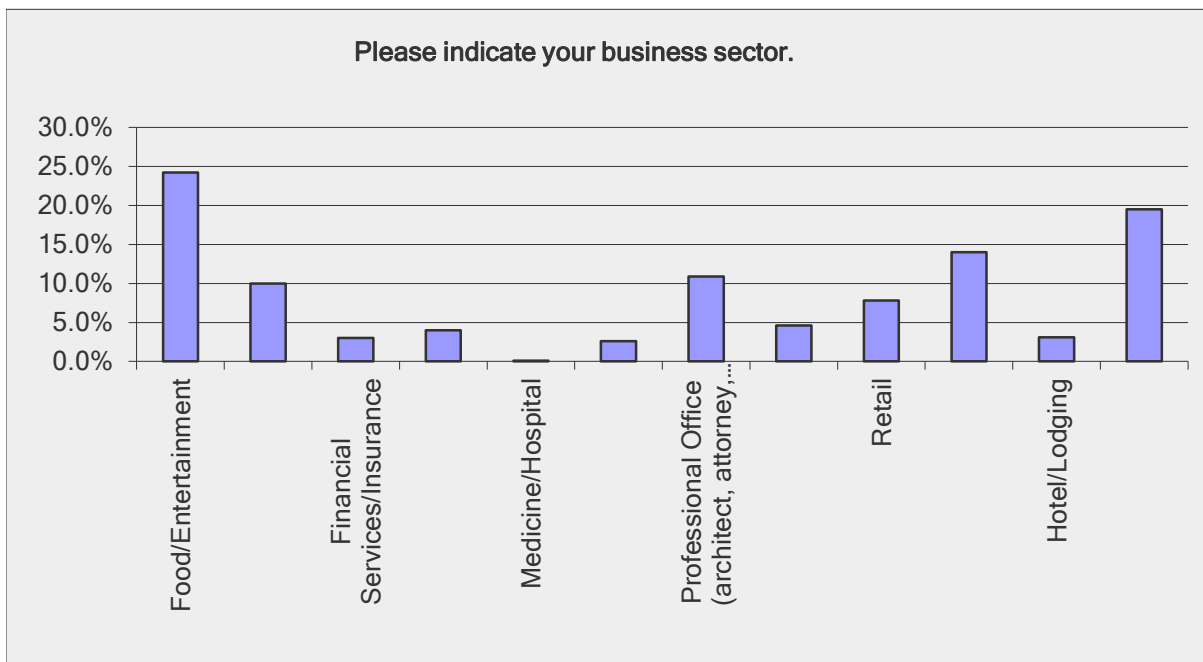
Select your sector.

Answer Options	Response Percent	Response Count
Business owner	22.2%	102
Sunnyvale resident	65.1%	299
Sunnyvale business employee	5.2%	24
Other	7.4%	34
If Other, please specify		37
<i>answered question</i>		<b>459</b>



Please indicate your business sector.

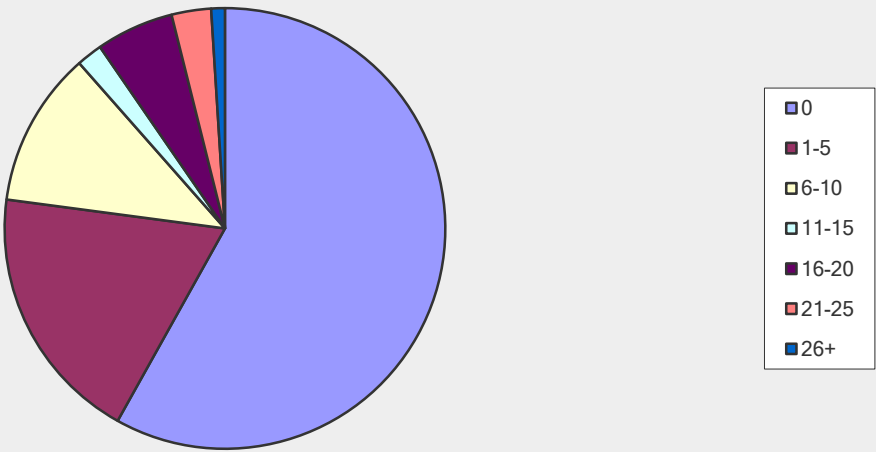
Answer Options	Response Percent	Response Count
Food/Entertainment	24.2%	31
Education/Government	10.0%	13
Financial Services/Insurance	3.0%	4
Industry/Manufacturing	4.0%	6
Medicine/Hospital	0.1%	2
Non-Profit	2.6%	3
Professional Office (architect, attorney, etc.)	10.9%	14
Real Estate/Development	4.6%	6
Retail	7.8%	10
Technology	14.0%	18
Hotel/Lodging	3.1%	4
Other (please specify)	19.5%	25
<b>answered question</b>		<b>128</b>



How many minimum wage employees do you currently employ in Sunnyvale?

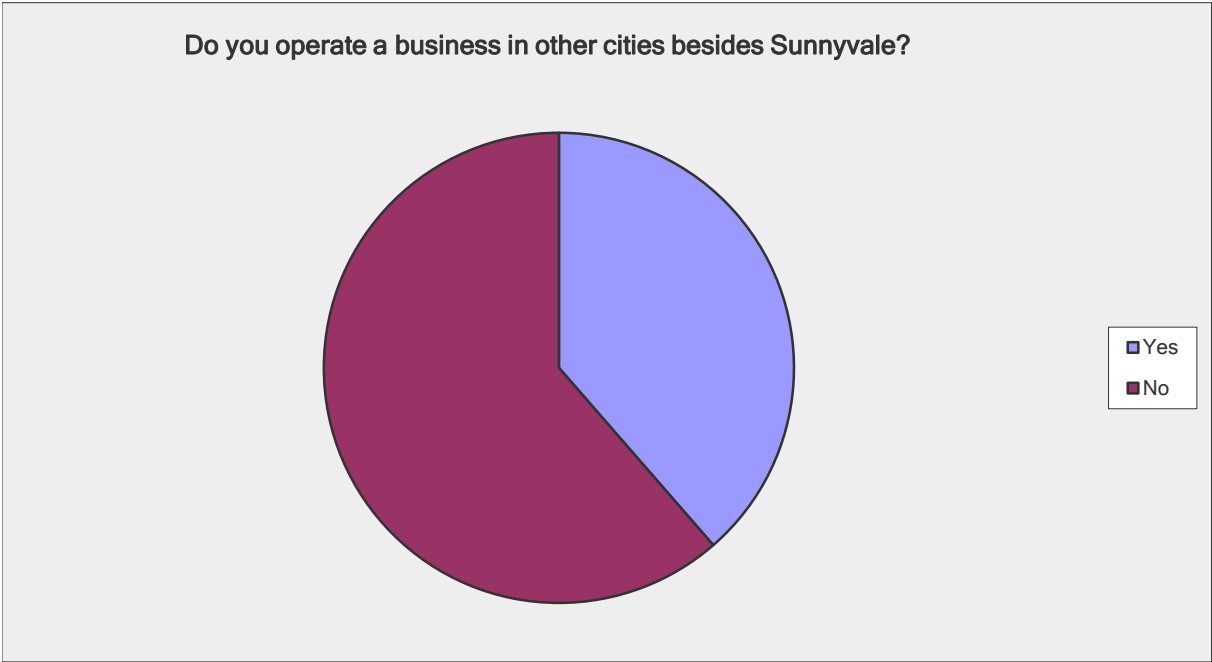
Answer Options	Response Percent	Response Count
0	58.1%	61
1-5	19.0%	20
6-10	11.4%	12
11-15	1.9%	2
16-20	5.7%	6
21-25	2.9%	3
26+	1.0%	1
answered question		105

How many minimum wage employees do you currently employ in Sunnyvale?



Do you operate a business in other cities besides Sunnyvale?

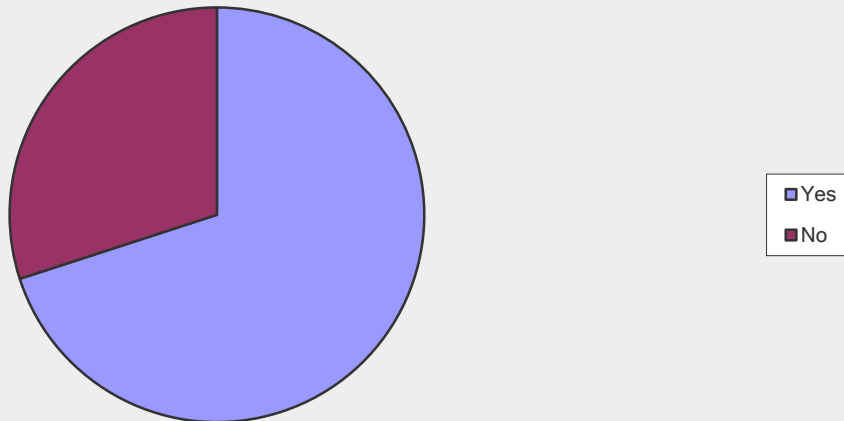
Answer Options	Response Percent	Response Count
Yes	38.6%	39
No	61.4%	62
If Yes, where?		31
<i>answered question</i>		101



The State's minimum wage is scheduled to be \$10 on January 1, 2016. Do you support the City of Sunnyvale increasing the minimum wage to \$10 prior to January 1, 2016?

Answer Options	Response Percent	Response Count
Yes	70.0%	283
No	30.0%	121
If No, why not?		48
<i>answered question</i>		<b>404</b>

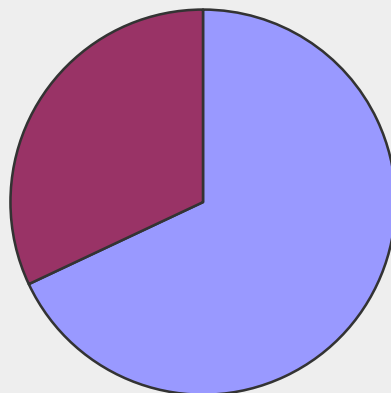
The State's minimum wage is scheduled to be \$10 on January 1, 2016. Do you support the City of Sunnyvale increasing the minimum wage to \$10 prior to January 1, 2016?



The State's minimum wage is not adjusted annually based on increases in the Consumer Price Index. If the City of Sunnyvale increases the minimum wage to \$10 per hour, do you support annual increases based on increases to the Consumer Price Index?

Answer Options	Response Percent	Response Count
Yes	68.0%	272
No	32.0%	127
If No, why not?		39
<b><i>answered question</i></b>		<b>399</b>

The State's minimum wage is not adjusted annually based on increases in the Consumer Price Index. If the City of Sunnyvale increases the minimum wage to \$10 per hour, do you support annual increases based on increases to the Consumer Price Index?



☐ Yes  
☐ No

If a minimum wage increase is approved, how would your business be impacted?

Answer Options	Response Percent	Response Count
I pay my workers more than the current minimum wage	70.5%	55
I would have to raise wages of my non-minimum wage	20.5%	16
I would lay off workers	19.2%	15
I would delay future hiring	30.8%	24
I would cut back on workers' hours to adjust for new	26.9%	21
I may move my business out of Sunnyvale	17.9%	14
I wouldn't open another business/location in Sunnyvale	30.8%	24
Other		27
<b>answered question</b>		<b>78</b>

