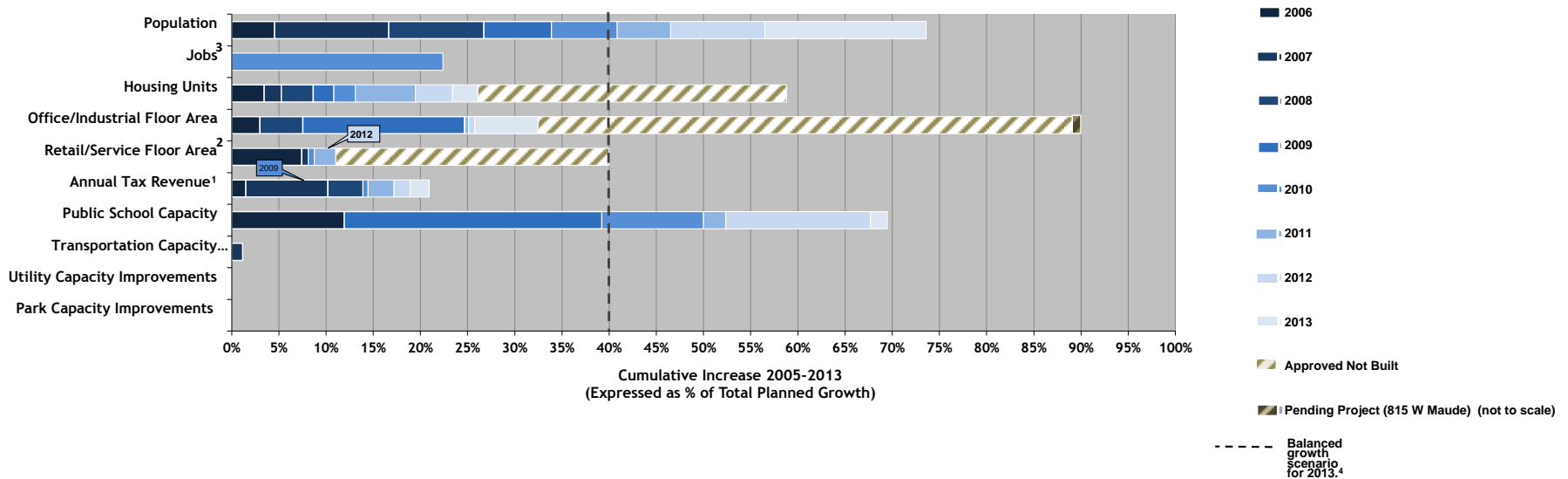


PROJECTED BALANCED GROWTH PROFILE (INCLUDES NONRESIDENTIAL FLOOR AREA AND HOUSING UNITS APPROVED BUT NOT YET BUILT)

Balanced Growth Indices	Base Year 2005	GOAL FOR 2025	Total Planned Growth Net Increase 2005 to 2025	2007 Actual	2008 Actual	2009 Actual	2010 Actual	2011 Actual	2012 Actual	2013 Actual	2013 Increment (actual since 2012)	2013 Increment (% of Total Planned Growth)	Approved Not Yet Built as of June 2014	Pending Projects (815 W Maude)
Park Capacity Improvements		n/a	n/a	n/a	n/a	n/a	n/a	n/a	n/a	n/a	n/a	n/a	n/a	n/a
Utility Capacity Improvements		n/a	n/a	n/a	n/a	n/a	n/a	n/a	n/a	n/a	n/a	n/a	n/a	n/a
Transportation Capacity Improvements		\$46,884,000	\$46,884,000	\$547,970	\$547,970	0	0	0	0	0	0	0%	n/a	n/a
Public School Capacity	5,373	6,729	1,356	5,535	5,535	5,905	6,051	6,083	6,291	6,315	24	2%	n/a	n/a
Annual Tax Revenue ¹	\$72,271,030	\$174,748,212	\$102,477,182	\$82,731,078	\$86,536,989	\$80,080,423	\$80,640,616	\$83,447,216	\$85,189,946	\$87,277,140	\$2,087,194	2%	n/a	n/a
Retail/Service Floor Area ²	5,784,000	7,500,000	2,200,000	5,962,662	5,962,662	5,962,662	5,976,840	6,027,052	6,005,338	6,000,788	-4,550	0%	637,309	n/a
Office/Industrial Floor Area	30,100,000	37,700,000	7,600,000	30,327,927	30,673,881	31,973,881	31,979,928	32,009,556	32,058,721	32,568,435	509,714	7%	4,308,601	8,800
Housing Units	54,800	61,900	7,100	55,174	55,414	55,570	55,730	56,183	56,462	56,653	191	3%	2,322	n/a
Jobs ³	73,630	92,650	19,020	n/a	n/a	n/a	77,890	n/a	n/a	n/a	n/a	n/a	n/a	n/a
Population	132,725	150,725	18,000	135,721	137,538	138,826	140,081	141,099	142,896	145,973	1,797	17%	n/a	n/a



Notes

1. FY 2004/2005 is the base year for the Balanced Growth Index. All revenues are converted to FY 2004/2005 dollars for comparison purposes.
2. This index only represents net new floor area, and does not reflect tenant improvements to existing floor area.
3. Data has been modified resulting in a decrease in base year, projections, and current year estimates. There is a significant challenge in finding reliable estimates of Sunnyvale jobs. This version of the Balanced Growth Profile provides Association of Bay Area Governments (ABAG) data from most recent publications while staff explores a more reliable annual estimate of jobs. Data for 2011 or 2012 is not yet available.
4. In a "balanced" growth scenario" each profiled item would increase 5% each year. Cumulative "balanced growth" to the end of 2013 would be 40%.