



COMMUNITY CONDITION INDICATORS AND BALANCED GROWTH PROFILE

COMMUNITY CONDITION INDICATORS

The Community Condition Indicators (CCIs) have been presented as an integral part of the City's budget for many years. The CCIs have traditionally been used as a measurement tool to evaluate and implement General Plan goals and policies. The CCIs today reflect the changes adopted by City Council at the May 8, 2007 Council meeting as part of the ["Transitioning from a Growth to a Steady-State City" RTC #07-154](#). These indicators are the key demographic, economic, and physical data which describe the state of the City at a given point in time. The importance of reporting community condition indicators is that their numerical values change over time as the community changes, providing both a snapshot of current conditions and an indication of change over a longer time period.

BALANCED GROWTH PROFILE

The Balanced Growth (BGP) is a planning tool developed in 2007 ([RTC #07-154](#)), which can be used to monitor the City's growth and determine the relative balance among the indicators of growth and infrastructure. The BGP assumes that Sunnyvale was in a reasonably balanced state in 2005 as indicated by the high level of satisfaction expressed by the population in the 2005 Resident Satisfaction Survey. The profile is extended one year each year, adding on the incremental growth and improvements from the preceding year. Currently, the BGP presents the first eight years, or 40 percent, of the 20-year planning horizon.

The first two rows in the BGP are the major indicators of growth: population and jobs. While there is a relationship between population and housing and between jobs and industrial/office/commercial (I/O/C) square footage, the City only has direct influence over housing units and I/O/C square footage. The projected growth in both indicators from 2005-2025 is based on the historic patterns of growth. These profiles do not reflect the full build-out of the General Plan as they account for only 60 percent of net new housing units and 73 percent of net new I/O/C square feet.

Projected population growth over 20 years is based on an average household size as applied to the number of new housing units and projected job growth is based on historic average employees per square foot. The final four bars (public school capacity, transportation capacity, utility capacity, and park capacity) represent the infrastructure needed to support the projected growth in population and jobs. The Community Vision Chapter of the General Plan explains that transportation, parks and utility bars may lag behind and then make large leaps due to the high cost of some of the improvements. The original profile did not include projections for parks and utilities, anticipating the completion of long-range plans for these items within the first few years of the profile when adopted in 2007.

GROWTH INDICATORS

POPULATION – HOUSING UNITS

JOBS – INDUSTRIAL/OFFICE/COMMERCIAL

INFRASTRUCTURE

With regard to supporting infrastructure and facilities (except for school capacity), capacity improvements necessary to support the expected growth will be determined based on several City of Sunnyvale infrastructure plans. These infrastructure improvement plans include (or will include) the estimated cost for capacity improvements. The cost for each improvement will be compared to the total program to determine the proportion (percent) of the total program that the improvement represents. The bar on the chart will be extended by an increment percentage as each improvement is completed. Only the transportation capacity improvements funded in whole or in part by the City of Sunnyvale are included in the BGP. Projects initiated and funded by the state, regional, and county agencies are not included. The Profile assumes that other jurisdictions are proceeding with planned capacity improvements at a reasonable pace in accordance with their plans.

SCHOOLS – As a proxy, school capacity is represented by the Sunnyvale School District capacity needs analysis (based on the Sunnyvale General Plan) prepared in 2003 and the required increase in classroom space.

TRANSPORTATION – Transportation improvements are based on the Transportation Strategic Plan (TSP) originally prepared in 2003 (updated in 2013) and the percent of projects completed.

PARKS– Council examined the desired amount of parks several times since 2007. Staff is currently in the process of identifying a tool for measuring park capacity improvements. The parks and open space capacity improvements plan is pending.

UTILITIES – The Water Utility Master Plan was adopted in 2010; the companion Wastewater Master Plan is expected in 2015.

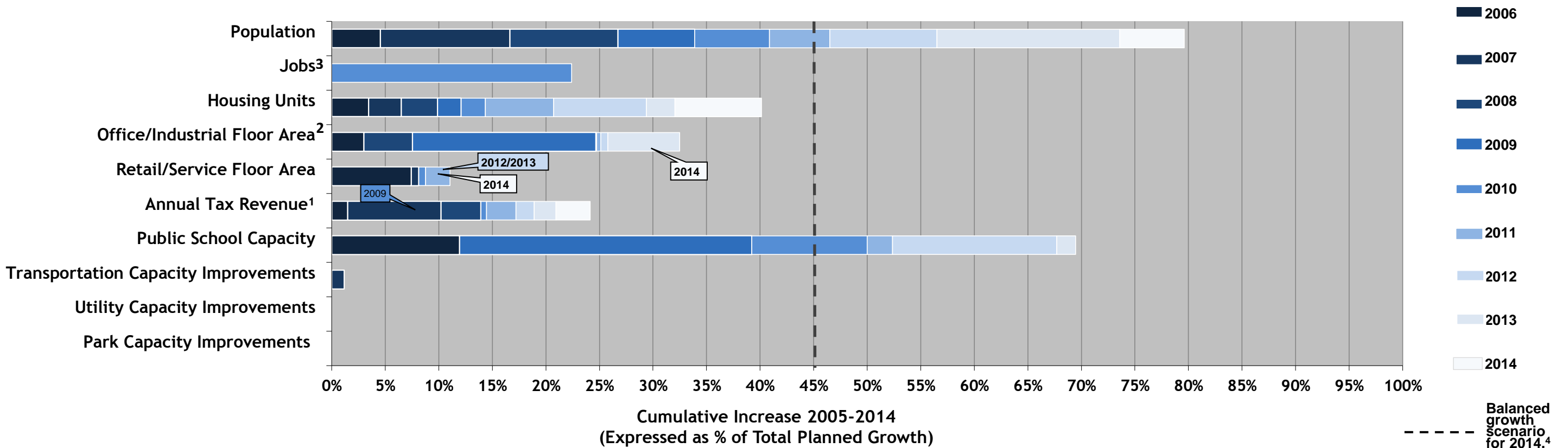
READING THE PROFILE

The profile is divided into 20 segments, each representing one year (five percent) of the 20-year timeline. The current year, 2013, is 40 percent of the profile. Each year the profile is updated to reflect the growth in population, housing, I/O/C square footage, and jobs from the prior calendar year, along with the completed capacity improvements. If all elements were growing in a balanced manner, all of the bars in the profile would be of equal length every year, extending exactly to the then current year. This will not always be the case. An imbalance in a single year does not signify a problem. An imbalance over multiple years, however, could be a concern to decision-makers, who may want to consider modifications of development policy or priorities to infrastructure improvements to respond to the rate of growth. As the Sunnyvale Community Vision is updated in the future, or as General Plan element updates result in different projected goals for 2025, the BGP must be recalibrated to reflect revised projected increases.

Readers may want to compare the physical changes (housing units and I/O/C square footage) to the occupancy of these structures (population and jobs) to aid in understanding growth in the community. For example, the housing units are below the current year mark yet the population bar exceeds the same mark; note too that the public school capacity improvements are also above the current year mark. Because all of the data is not available regarding other infrastructure it is premature to gauge whether there is a lack of balance relative to this infrastructure.

CURRENT BALANCED GROWTH PROFILE (January 1 to December 31, 2014)

| Balanced Growth Indices | Base Year 2005 | GOAL FOR 2025 | Total Planned Growth Net Increase 2005 to 2025 | 2007 Actual | 2008 Actual | 2009 Actual | 2010 Actual | 2011 Actual | 2012 Actual | 2013 Actual | 2014 Actual | 2014 Increment Increase (actual since 2013) | 2014 Increment (% of Total Planned Growth) |
|--|-------------------|------------------|---|--------------|--------------|--------------|--------------|--------------|--------------|--------------|--------------|--|---|
| Park Capacity Improvements | | n/a | n/a | n/a | n/a | n/a | n/a | n/a | n/a | n/a | n/a | n/a | n/a |
| Utility Capacity Improvements | | n/a | n/a | n/a | n/a | n/a | n/a | n/a | n/a | n/a | n/a | n/a | n/a |
| Transportation Capacity Improvements | | \$46,884,000 | \$46,884,000 | \$547,970 | \$547,970 | 0 | 0 | 0 | 0 | 0 | 0 | 0 | 0% |
| Public School Capacity | 5,373 | 6,729 | 1,356 | 5,535 | 5,535 | 5,905 | 6,051 | 6,083 | 6,291 | 6,315 | 6,315 | 24 | 0% |
| Annual Tax Revenue ¹ | \$72,271,030 | \$174,748,212 | \$102,477,182 | \$82,731,078 | \$86,536,989 | \$80,080,423 | \$80,640,616 | \$83,447,216 | \$85,189,946 | \$87,277,140 | \$90,536,760 | \$3,259,620 | 3% |
| Retail/Service Floor Area ² | 5,784,000 | 7,500,000 | 2,200,000 | 5,962,662 | 5,962,662 | 5,962,662 | 5,976,840 | 6,027,052 | 6,005,338 | 6,000,788 | 5,978,104 | -22,684 | -1% |
| Office/Industrial Floor Area | 30,100,000 | 37,700,000 | 7,600,000 | 30,327,927 | 30,673,881 | 31,973,881 | 31,979,928 | 32,009,556 | 32,058,721 | 32,568,435 | 32,368,012 | -200,423 | -3% |
| Housing Units | 54,800 | 61,900 | 7,100 | 55,261 | 55,501 | 55,658 | 55,818 | 56,271 | 56,886 | 57,075 | 57,650 | 575 | 8% |
| Jobs ³ | 73,630 | 92,650 | 19,020 | n/a | n/a | n/a | 77,890 | n/a | n/a | n/a | n/a | n/a | n/a |
| Population | 132,725 | 150,725 | 18,000 | 135,721 | 137,538 | 138,826 | 140,081 | 141,099 | 142,896 | 145,973 | 147,055 | 1,082 | 6% |



Notes

1. FY 2004/2005 is the base year for the Balanced Growth Index. All revenues are converted to FY 2004/2005 dollars for comparison purposes.
2. This index only represents net new floor area, and does not reflect tenant improvements to existing floor area.
3. Data has been modified resulting in a decrease in base year, projections, and current year estimates. There is a significant challenge in finding reliable estimates of Sunnyvale jobs. This version of the Balanced Growth Profile provides Association of Bay Area Governments (ABAG) data from most recent publications while staff explores a more reliable annual estimate of jobs.
4. In a "balanced growth scenario" each profiled item would increase 5% each year. Cumulative "balanced growth" to the end of 2014 would be 45%.