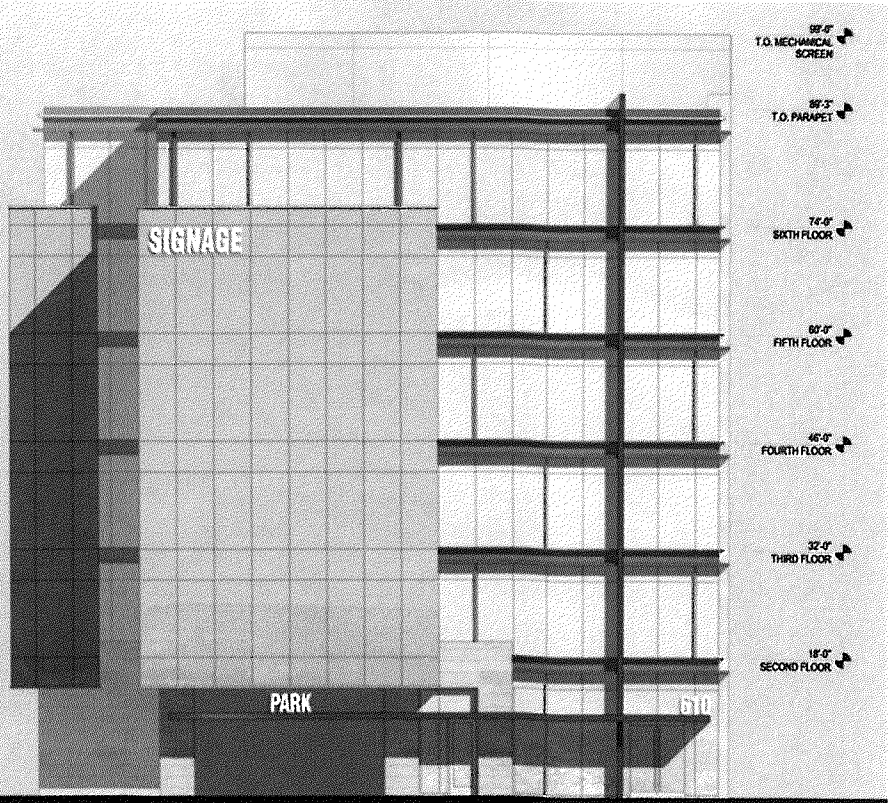


FRONT ELEVATION



SIDE ELEVATION



A PRELIMINARY DESIGN CONCEPT FOR
160 ARIES
SUNNYVALE, CALIFORNIA

DATE: 01.25.16

ELEVATION
OPTION 1

PROJECT #: 154079

PROJECT DATA

ASSESSOR'S PARCEL NO.: 209-07-007
ZONING: DSP/1A
SITE AREA: 22,030 S.F. / 0.51 ACRES

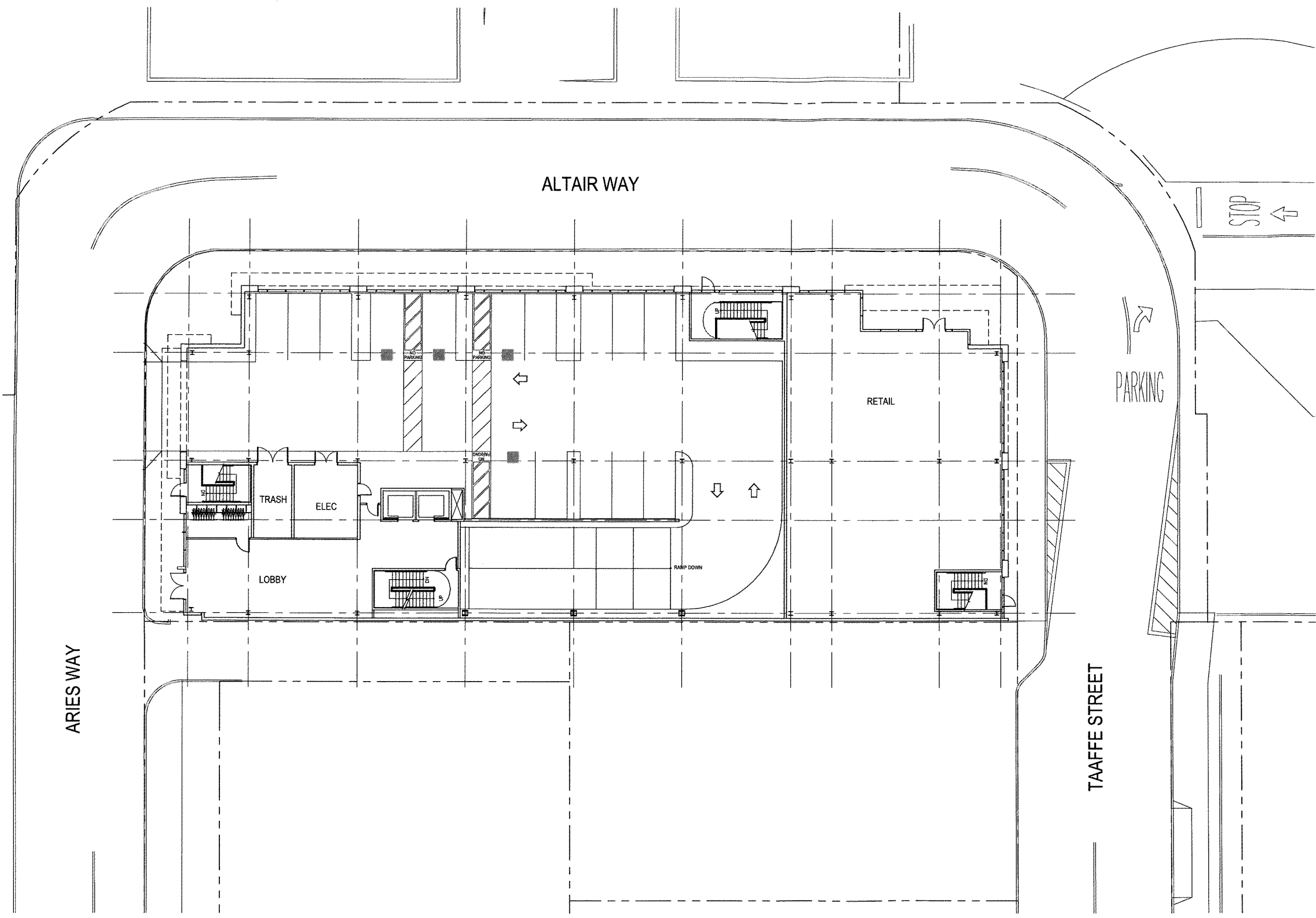
PROJECT AREA:	
LEVEL 1 RETAIL	4,930 S.F. APPROX.
LEVEL 1 OFFICE	3,305 S.F. APPROX.
LEVEL 2	19,854 S.F. APPROX.
LEVEL 3	19,854 S.F. APPROX.
LEVEL 4	19,854 S.F. APPROX.
LEVEL 5	19,854 S.F. APPROX.
LEVEL 6	15,938 S.F. APPROX.
TOTAL AREA	103,590 S.F.

F.A.R. 4.7

REQUIRED DSP PARKING RATIO 1/250 S.F.
REQUIRED TOTAL PARKING STALLS 415 STALLS

4 LEVEL BELOW GRADE PARKING 214 SPACES*
-PARKING RATIO 2.07/1,000
-NUMBER OF STALLS BELOW REQUIREMENT 201 STALLS

*INCLUDES 43 OFF-SITE ALLOCATED PARKING STALLS



SITE PLAN

SCALE: 1" = 30'-0"



ARCHITECTURAL TECHNOLOGIES
www.arctecinc.com
Arizona
2360 East Northern Avenue, Building C
Phoenix, Arizona 85028
P 602.953.2255 F 602.953.2388
California
99 Almaden Boulevard, Suite 840
San Jose, California 95113
P 408.496.0676 F 408.496.1121

A New Project
160 ARIES WAY
Sunnyvale, CA

DATE 01.25.16

A1.01

PROJECT NO: 154079