

Orchard Heritage Park Improvements

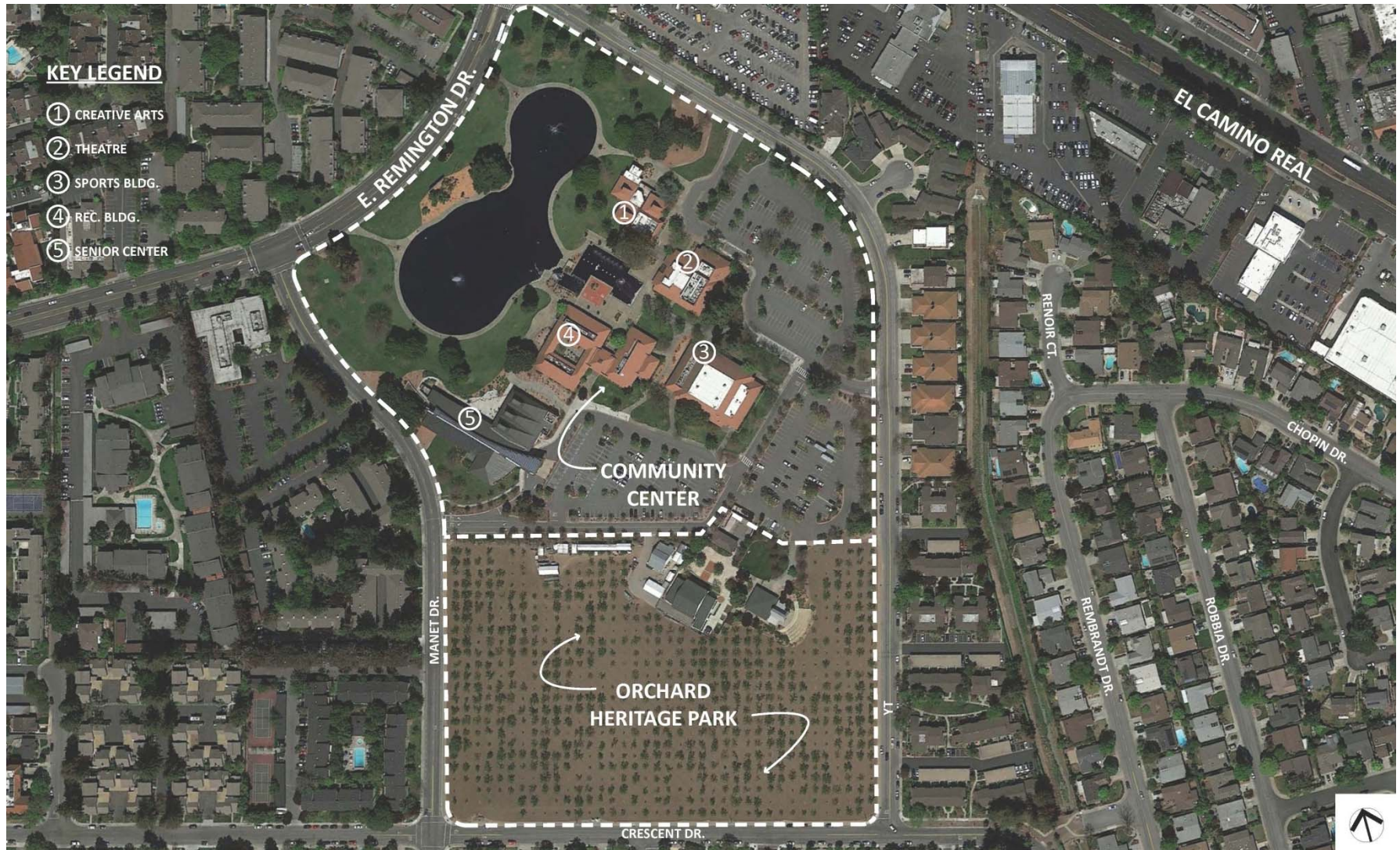
City Council Meeting

April 5, 2016

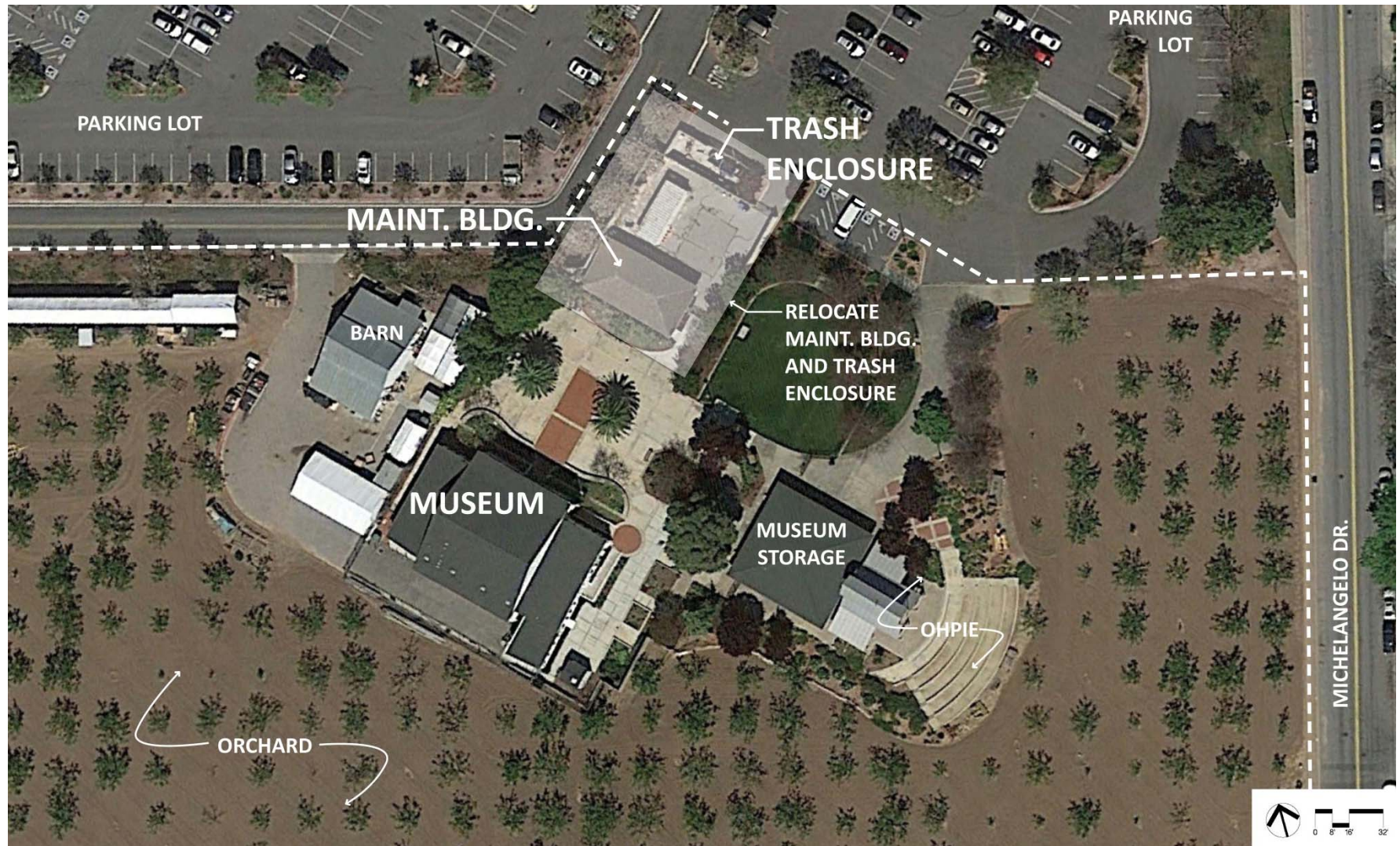
Background

- Capital Project – Orchard Heritage Park
- 2015 Council Study Issue, DPW 15-10:
“Relocation of the Butcher House to
Heritage Park”
- Projects Considered Together

Site Aerial



Existing Conditions



CIP Project Goals

- Orchard Heritage Park Project Funded In Capital Improvement Program
 - Relocation of Maintenance Building & Trash Enclosure
 - Includes Landscape and Hardscape
 - Make the Area More Accessible, Usable and Attractive

Existing Photos



Existing Photos



Existing Photos



Study Issue Goals

- Evaluate possible relocation of the Butcher House to Orchard Heritage Park
- Tree Removals (Permanent & Temporary)
- Utilities & Drainage Improvements

Butcher House



Process

- Project start-up / Site investigation (Aug/Sep '15)
- Community meeting #1 (9/17/15)
- Community meeting #2 (10/29/15)
- Finalize 3 Alternatives
- Parks & Recreation Commission (2/10/16)
- City Council (4/5/16)
- Finish design (Fall '16)
- Construction completion (Summer '17)

Alternative 1



Alternative 2



Alternative 3

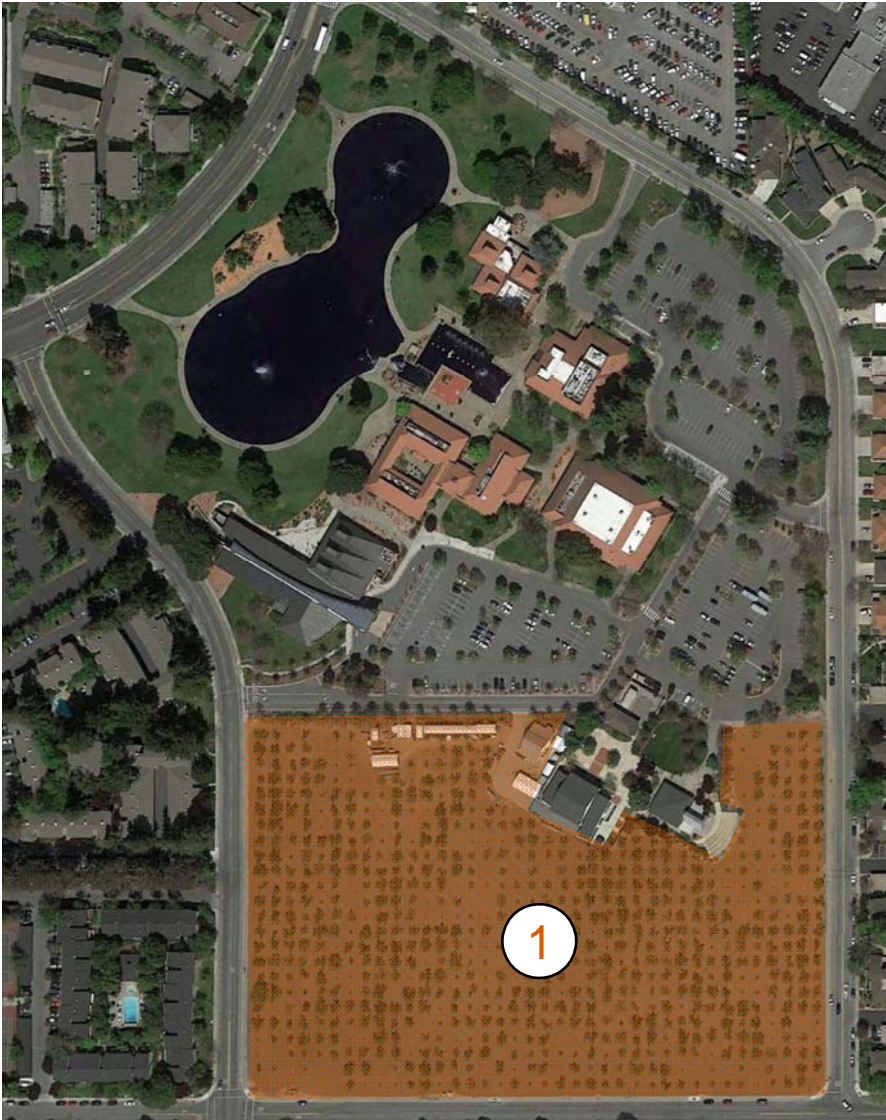


Council Alternatives

- Council can choose one of the following:
 1. Select One of Three Alternatives
 2. Select a Different Alternative

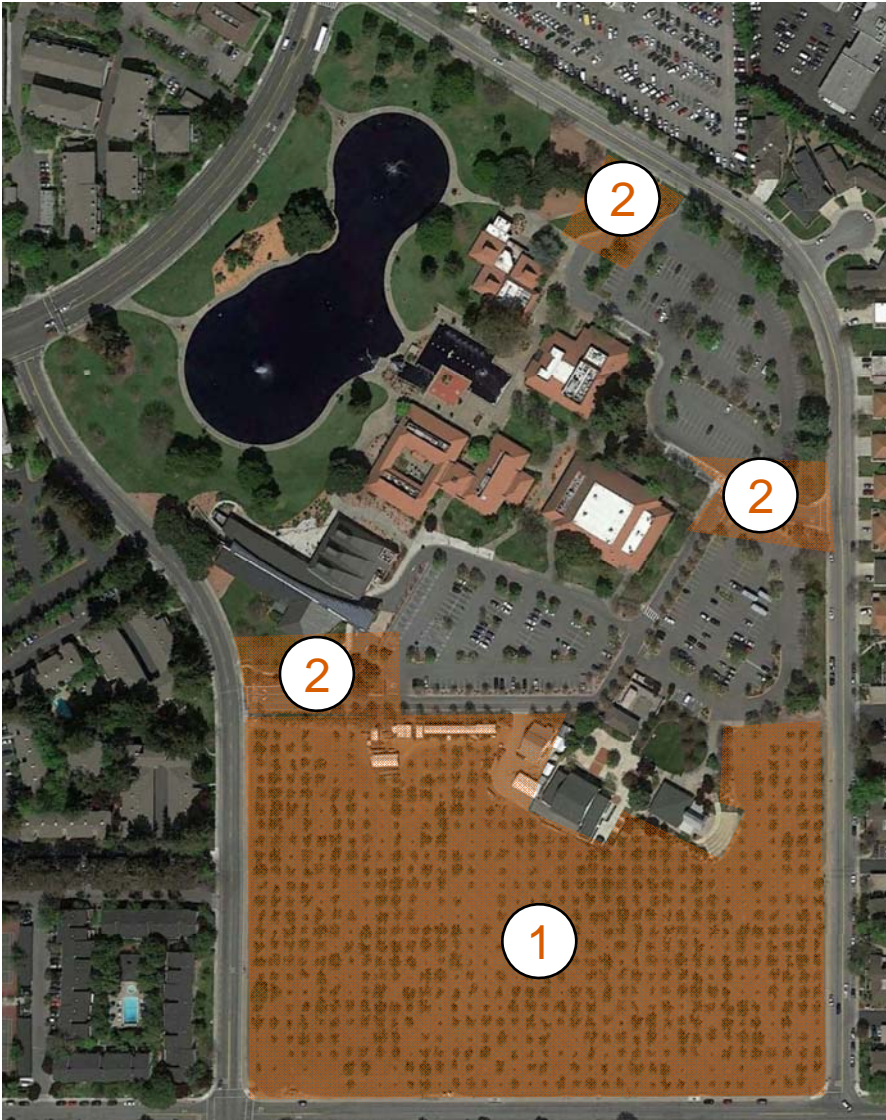
Questions?

Maintenance Facility Location



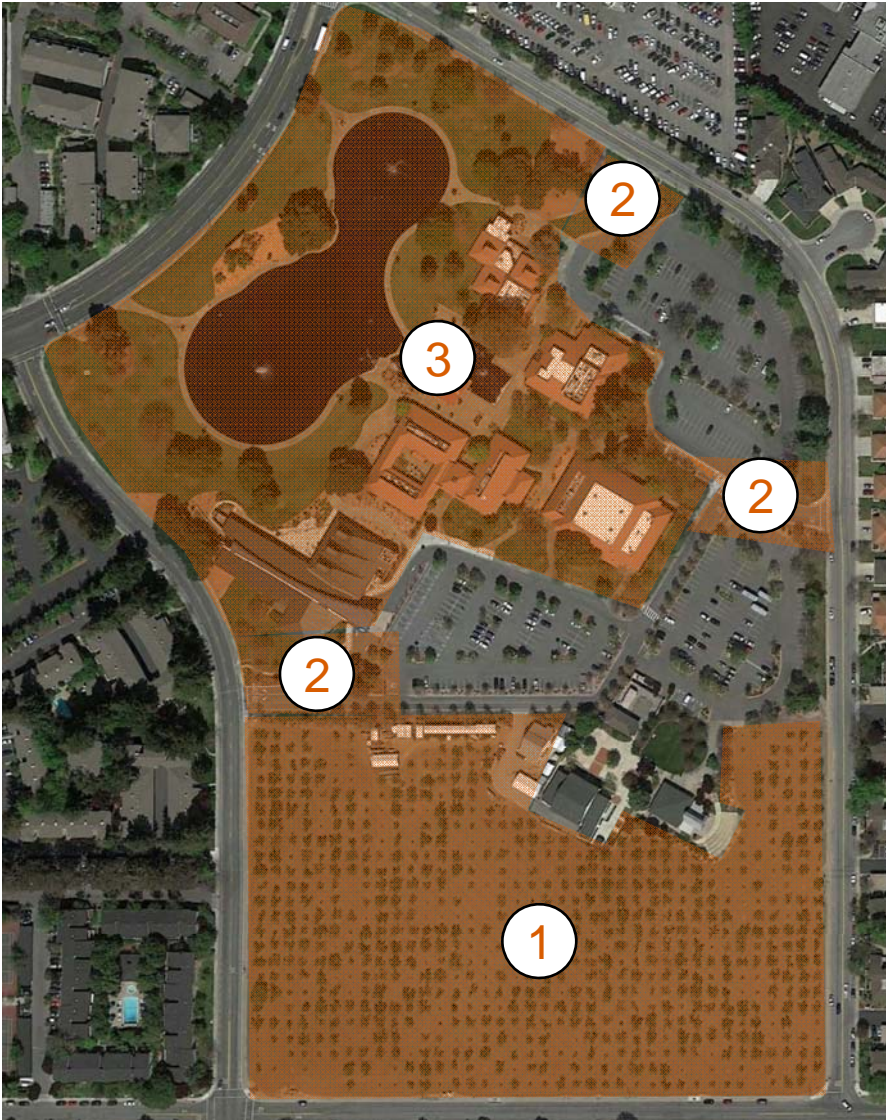
1. Not located in the orchard

Maintenance Facility Location



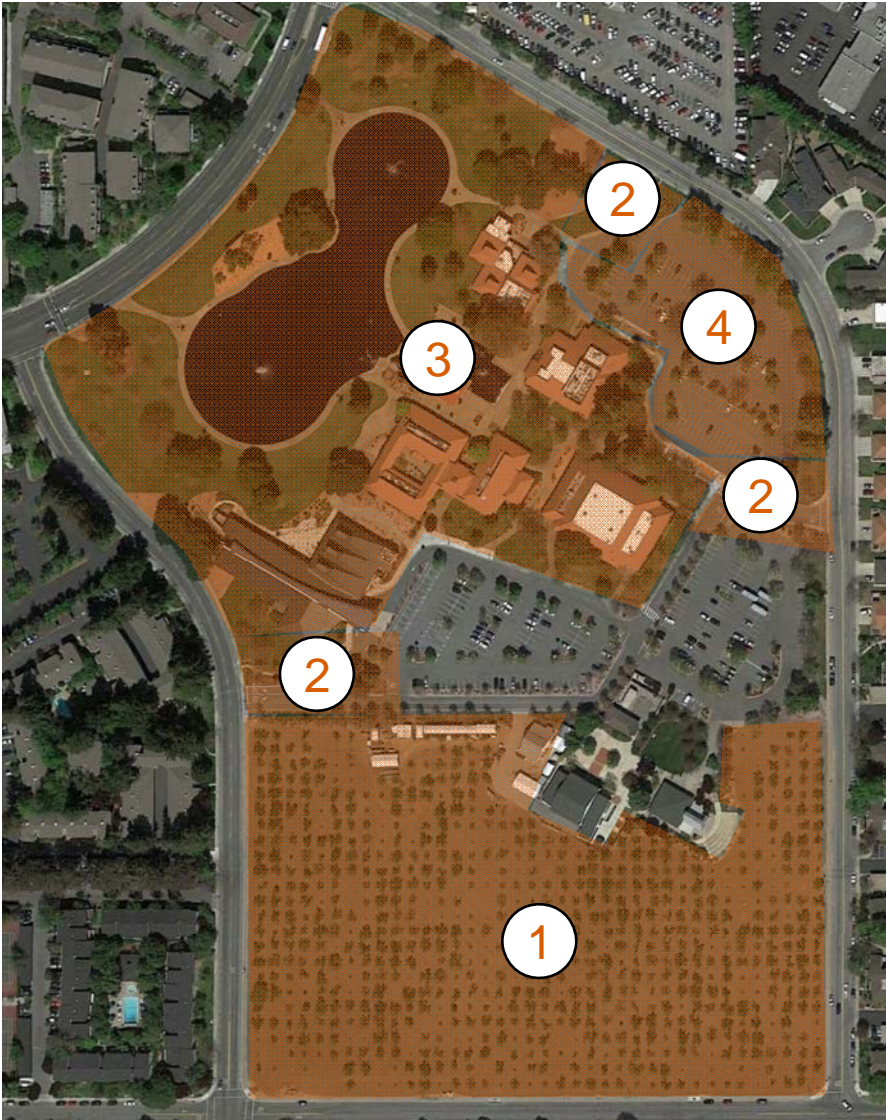
1. Not located in the orchard
2. Within or near parking lot, but not near driveway entrances

Maintenance Facility Location



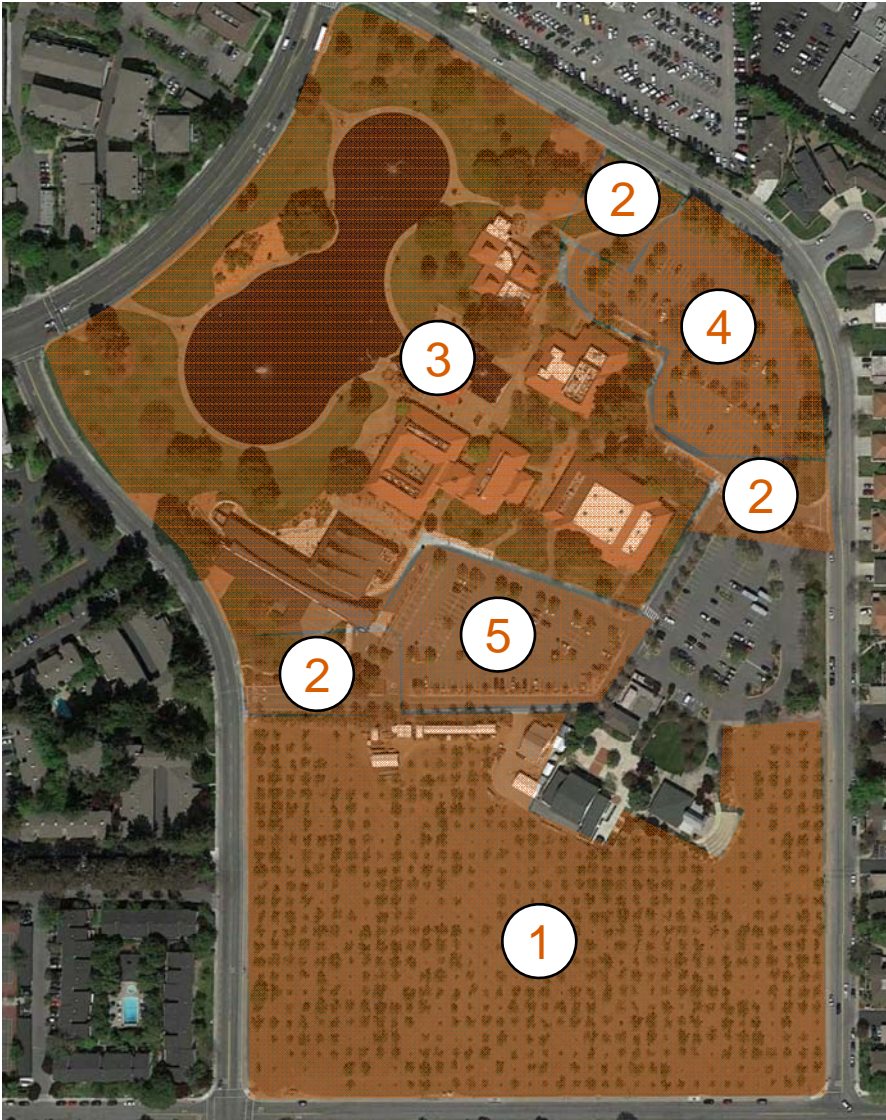
1. Not located in the orchard
2. Within or near parking lot, but not near driveway entrances
3. Not immediately in front of or adjacent to community center buildings/grounds

Maintenance Facility Location



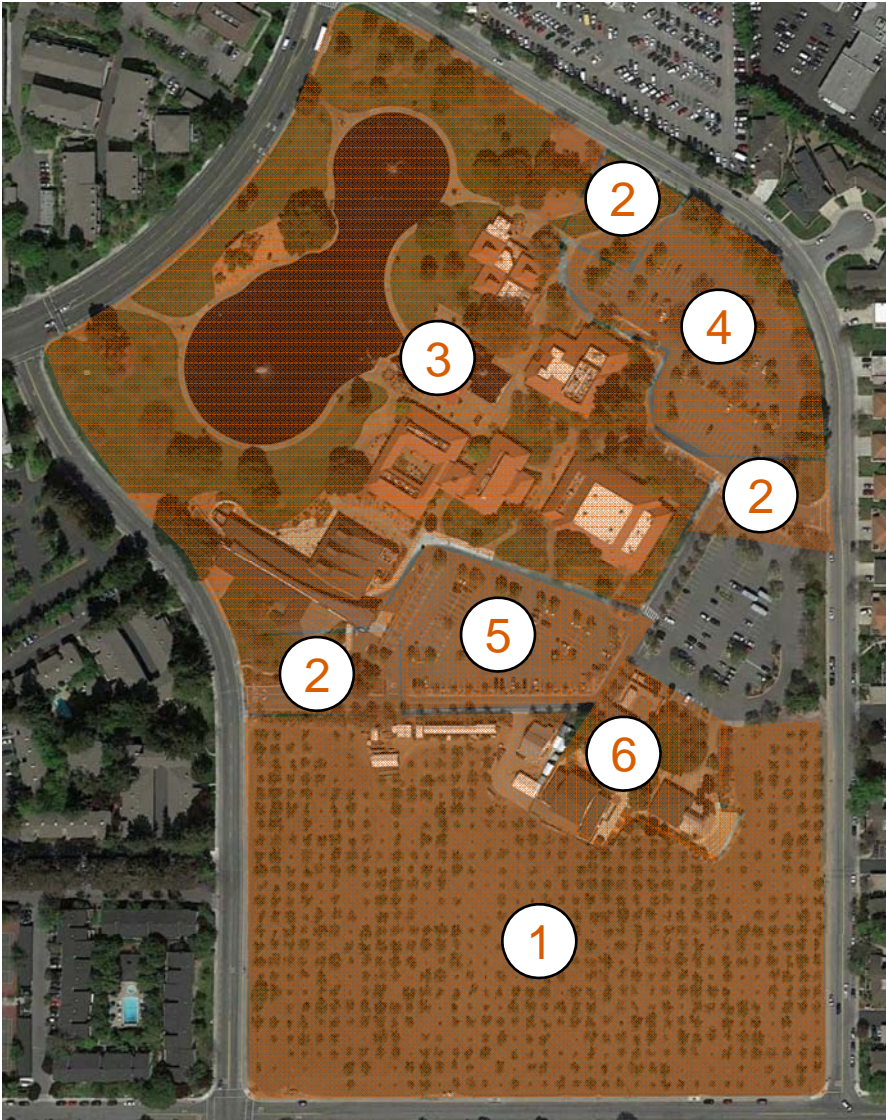
1. Not located in the orchard
2. Within or near parking lot, but not near driveway entrances
3. Not immediately in front of or adjacent to community center buildings/grounds
4. Not near theater parking

Maintenance Facility Location



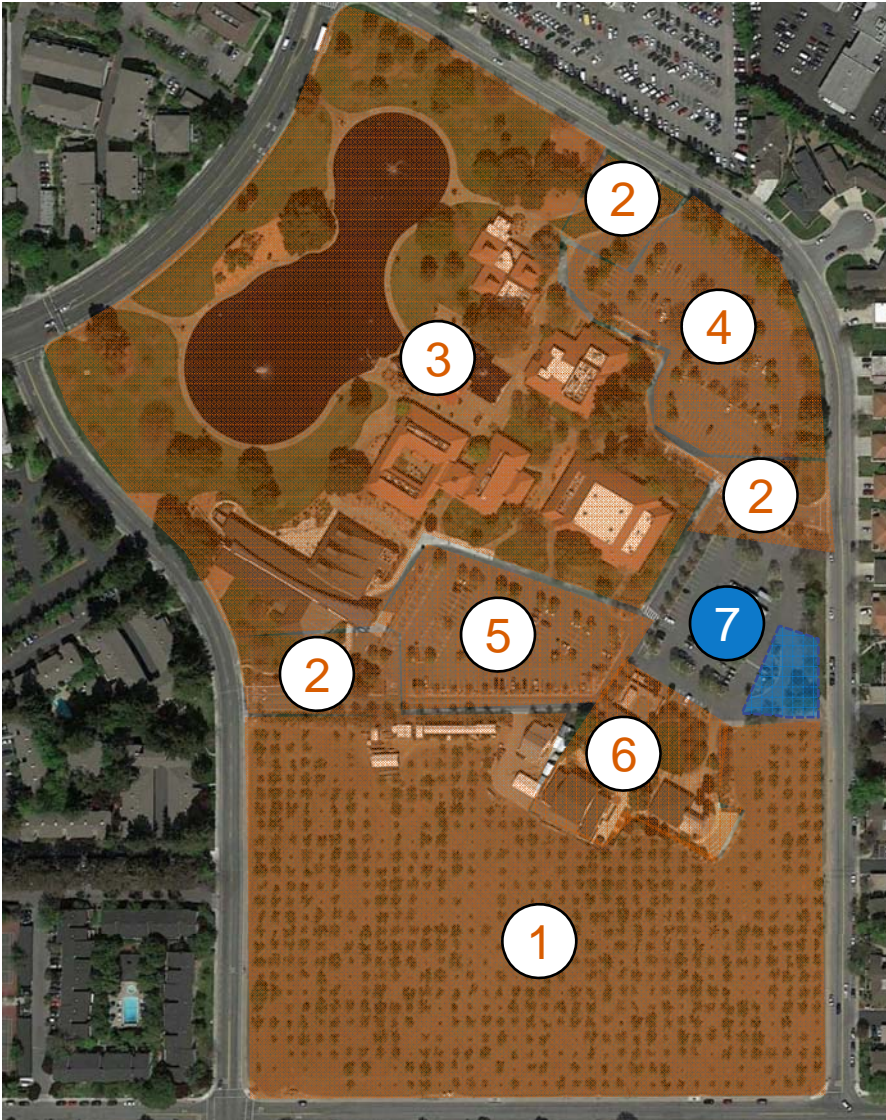
1. Not located in the orchard
2. Within or near parking lot, but not near driveway entrances
3. Not immediately in front of or adjacent to community center buildings/grounds
4. Not near theater parking
5. Avoid highly utilized parking lots

Maintenance Facility Location



1. Not located in the orchard
2. Within or near parking lot, but not near driveway entrances
3. Not immediately in front of or adjacent to community center buildings/grounds
4. Not near theater parking
5. Avoid highly utilized parking lots
6. Maintain Orchard Heritage Park footprint and promote improved visibility

Maintenance Facility Location



1. Not located in the orchard
2. Within or near parking lot, but not near driveway entrances
3. Not immediately in front of or adjacent to community center buildings/grounds
4. Not near theater parking
5. Avoid highly utilized parking lots
6. Maintain Orchard Heritage Park footprint and promote improved visibility
7. Look for inefficiently used space

Flooding



Flooding



Flooding

