



Climate Action Plan (CAP)

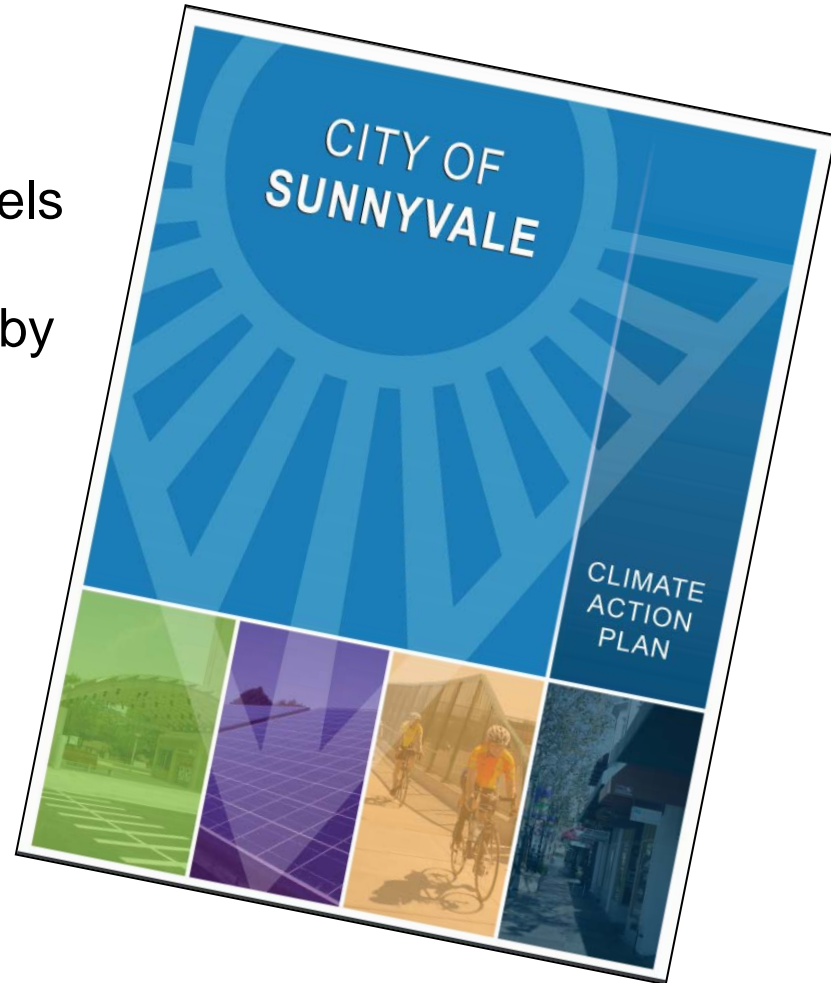
Biennial Progress Report 2016

**Presentation to City Council
May 3, 2016**



Recap of Climate Action Plan (CAP)

- CAP adopted in May 2014
- Workplan approved November 2014
- State and regional GHG targets:
 - 15% reduction below baseline levels by 2020
 - 80% reduction below 1990 levels by 2050
- Adopted CAP Actions:
 - **26%** GHG reduction below 2008 levels by 2020*
 - GHG reduction strategies:
 - 11 goal areas
 - 36 measures
 - 129 actions



Top 5 CAP Measures

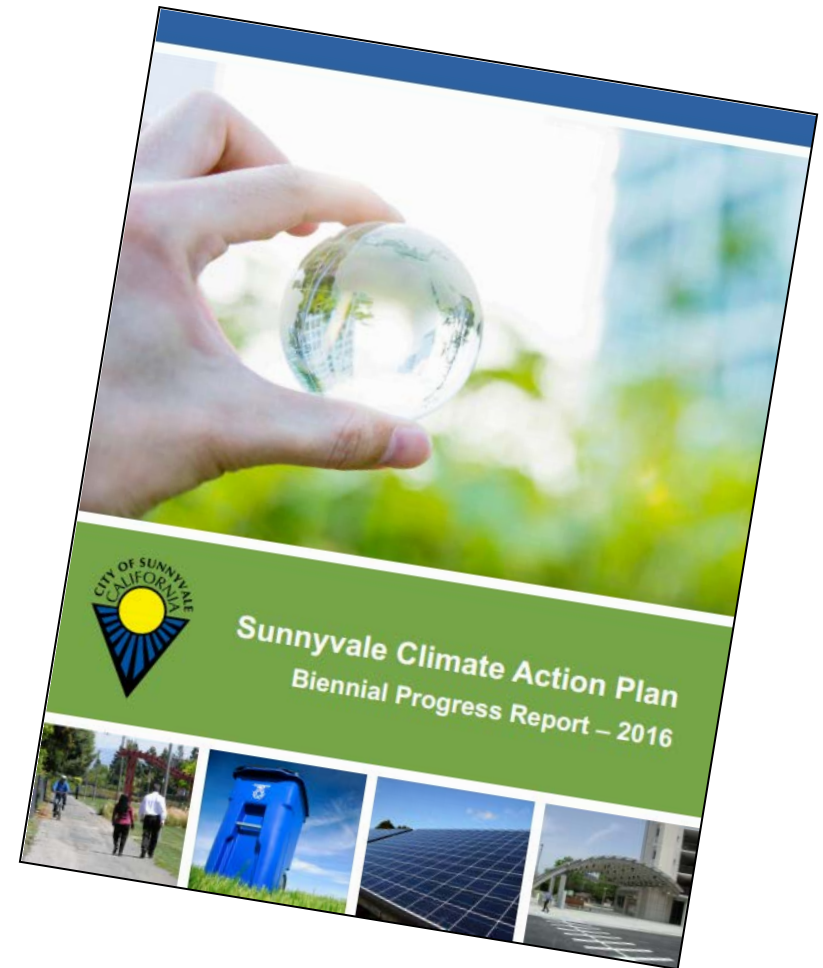
CAP Measure	Level of Effort	GHG Reduc. (MTCO2e)
Renewable Energy Portfolio (EP-1)	High	77,030
Commercial Energy Efficiency (EC-4)	High	53,190
Local Renewable Energy (EP-2)	Moderate	24,580
Recycling and Composting (LW-2)	Moderate	20,780
Transit-Oriented, Higher Density, Mixed-Use Development (LUP-2)	Moderate	14,010

Other Noteworthy Measures

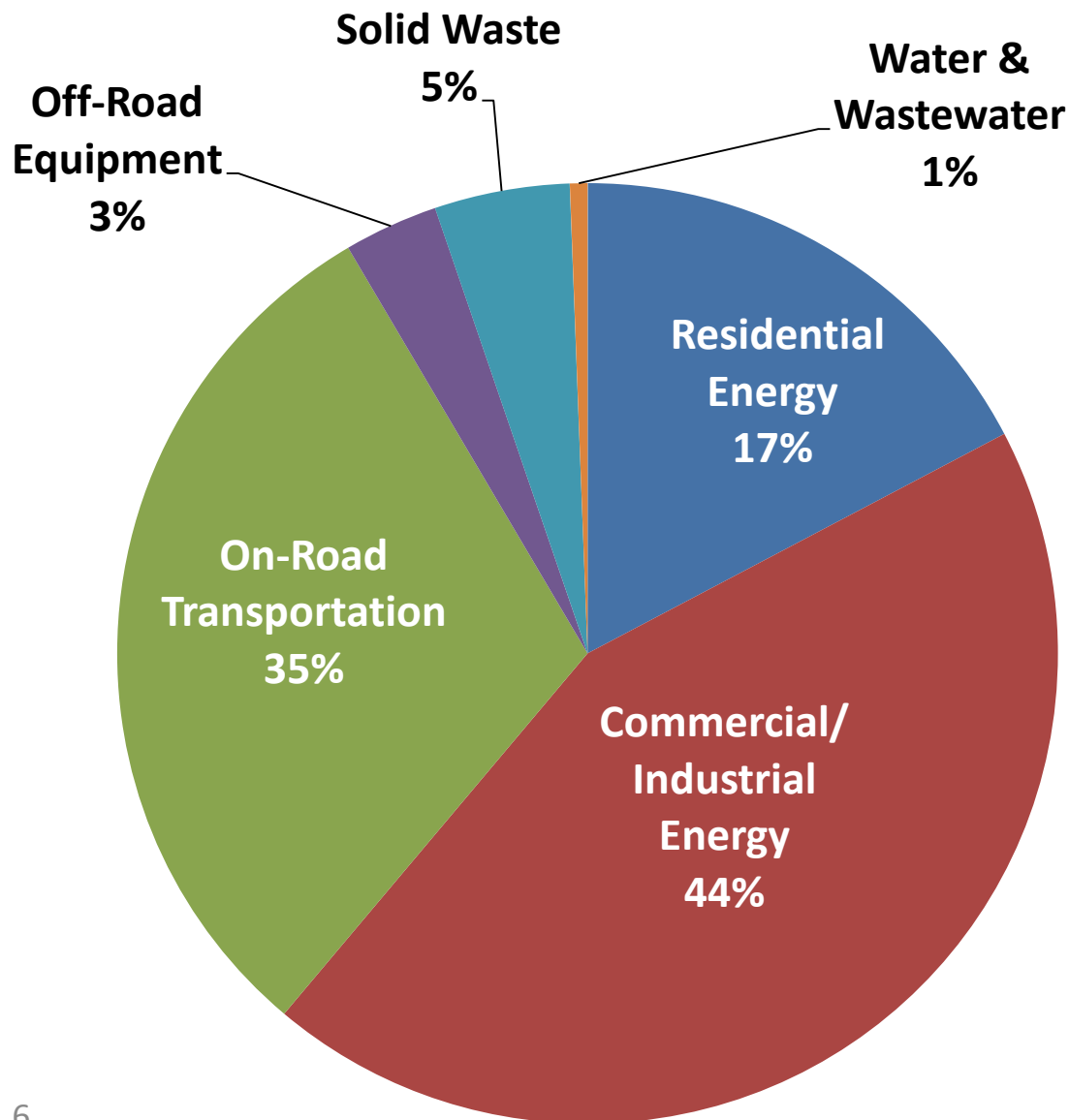
CAP Measure	Level of Effort	GHG Reduc. (MTCO ₂ e)
Commute Programs (CTO-4)	Moderate	5,420
Bicycle, Pedestrian, and Transportation Design Elements (CTO-1)	High	4,070
Lighting Efficiency (EC-1)	Moderate	260
Water Sources and Efficiency (WC-1)	High	180
Increase and Retain Awareness of Sustainability Issues (CA-1, CA-2)	High	N/A
Adaptation Strategies	High	N/A

CAP Biennial Report 2016

- Key components of report:
 - GHG reductions and updated GHG inventories
 - Status of CAP actions
 - Updated Work Plan 2020
 - Funding source updates



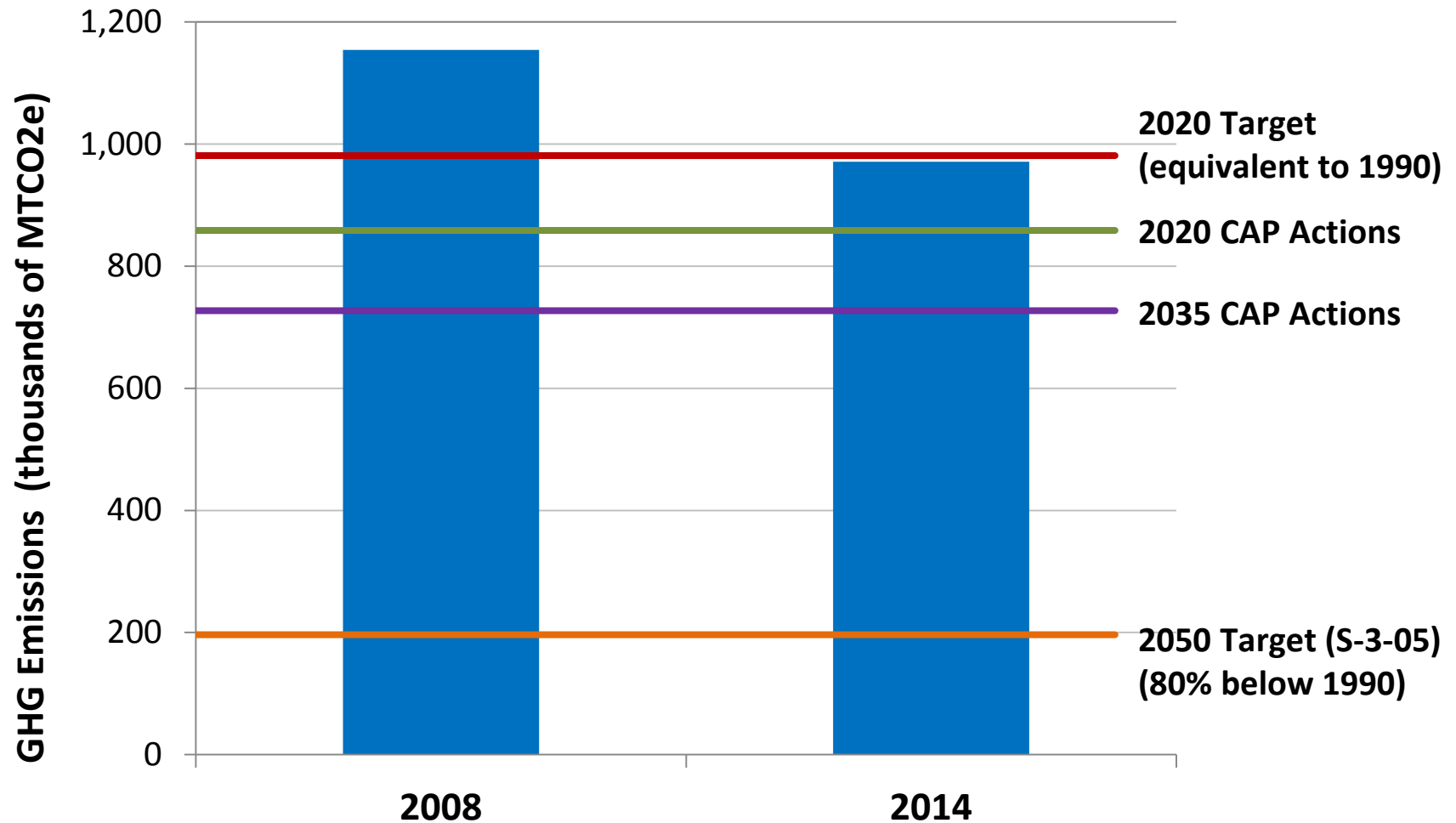
Updated 2008 Baseline Inventory



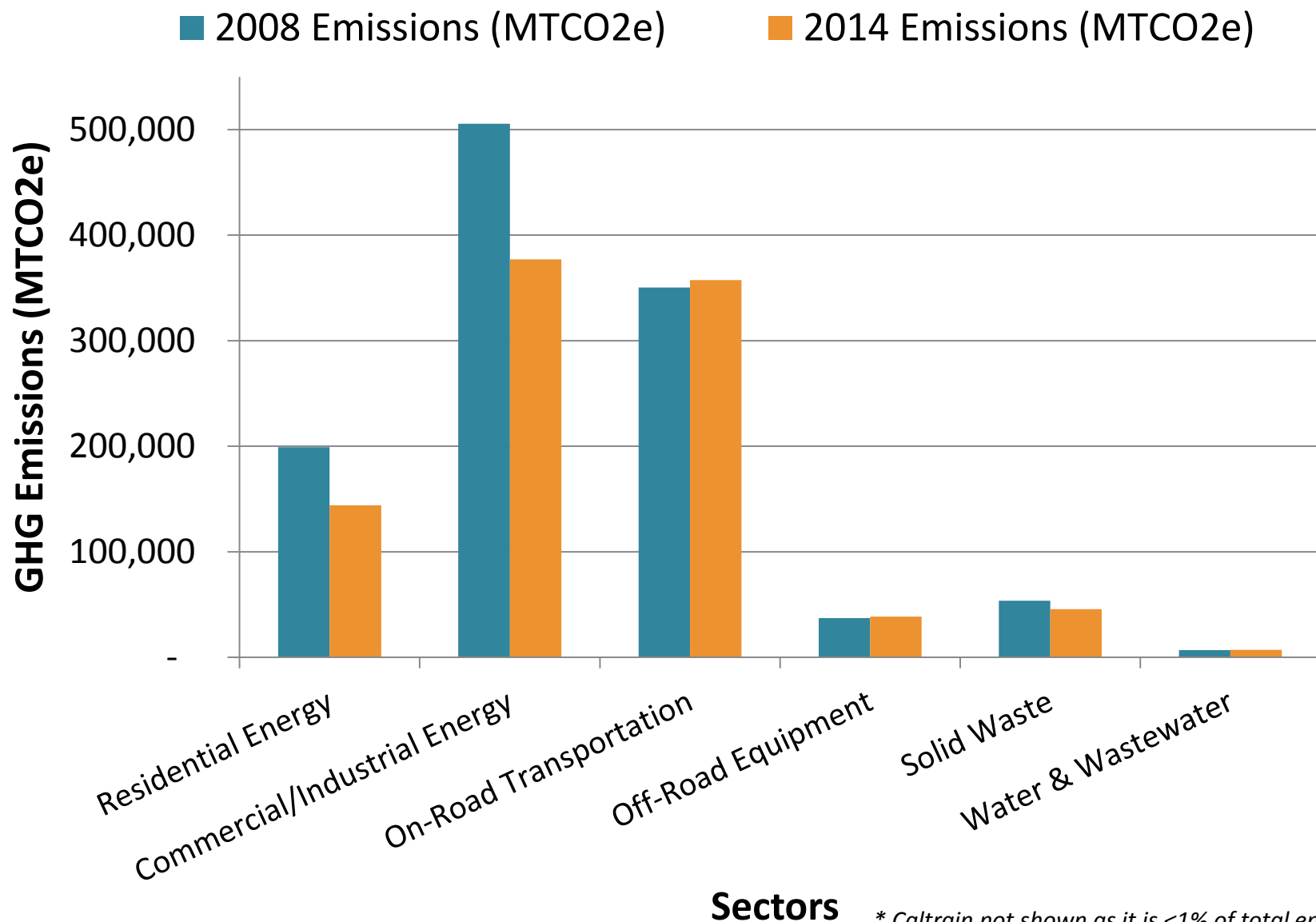
Baseline:
1,153,970 MTCO₂e

Comparison of Emissions to Baseline & Targets

2014 emissions indicate 15% reduction



GHG Reductions by Sector



* Caltrain not shown as it is <1% of total emissions

CAP Implementation Progress

Implementation Status	Percent	Number of Actions
Ongoing or completed	57%	74
In progress	16%	20
Scheduled for 2014-2015 (not yet begun)	6%	8
Scheduled to begin later 2016-2020	20%	25

Workload	Baseline Effort	Expanded Effort	New Effort
On-going and Completed Actions	40	34	-
In Progress Actions	5	5	10

Noteworthy Trends

- Residential Energy Down
 - - 8% overall electricity use
 - - 20% overall natural gas use
- Commercial/Industrial Energy Use Flat
 - 1.7 million new sq. ft. of office/industrial
- Total Vehicle Miles Traveled (VMT) Up
 - + 7% total VMT
 - + 2% emissions from transportation sector



CAP Implementation – Progress Highlights

- 64% solid waste diversion rate
- 25% reduction in water use
- CalTrain ridership up 45%
- 41% students using non-motorized transport to school (up from 14%)



CAP Implementation – Key Initiatives Underway

- Community Choice Energy
- Energize Sunnyvale (Georgetown Energy Prize)
- Conversion of remaining City-owned streetlights to LED
- Transportation Demand Management, Peery Park Rides Pilot
- Recycled water expansion



CAP Implementation – New & Expanded Initiatives

- CalGreen and Green Building policy updates
- Commercial energy conservation
- Adaptation planning and preparation
- Additional study items



Proposed changes to the CAP

- Staff have proposed revisions to some CAP actions:
 - **1 action** proposed for deletion due to its implementation challenges
 - **5 actions** with proposed language changes to reflect current context
 - **6 actions** with proposed changes to performance indicators (which are used to estimate GHG reductions from implementation)

Conclusions

- Great progress on GHG reductions, both locally and with state policy implementation
- 2020 target is readily achievable; next targets are big reaches
- Key initiatives have been launched and are in progress
- Significant workload and focus on additional initiatives ahead

Recommendations

1. Accept the CAP Biennial Report 2016
2. Approve the staff recommended changes to the CAP reduction measures and performance indicators as shown in Attachment 2

