

# Community Pipeline Safety Initiative

## Sunnyvale City Council

March 29, 2016



## Program at a Glance

### WHAT WE'RE DOING



Checking the area above the gas transmission pipeline for trees and structures that pose an emergency access or safety concern



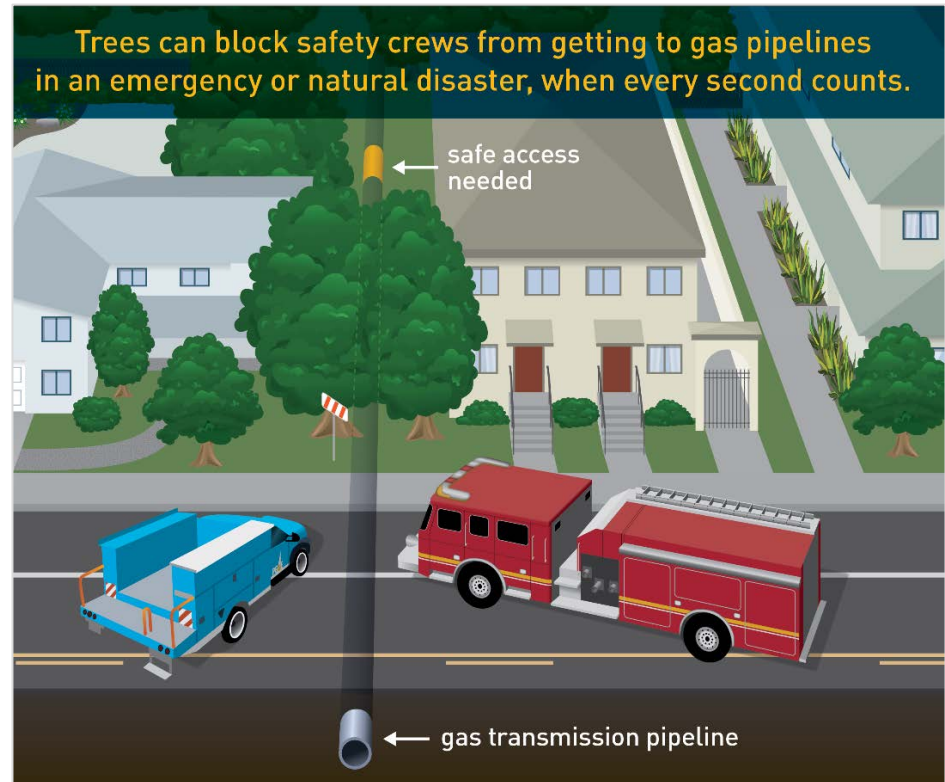
Helping to ensure immediate access for safety crews, and preventing potential damage to the pipe



Working with our customers and communities where a safety risk has been identified to develop shared solutions

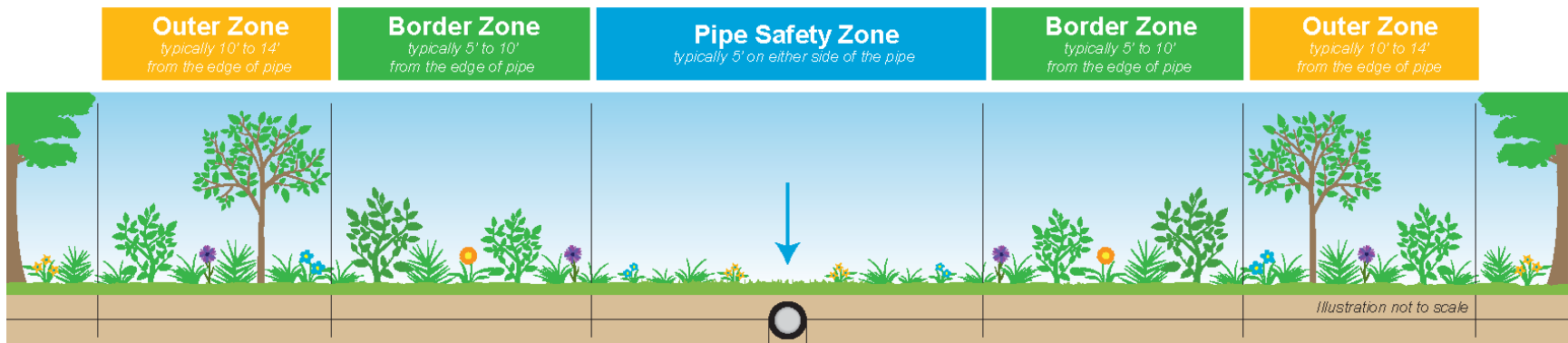


Planting new trees at a safe distance from the pipeline and restoring the area to preserve the natural beauty of our communities



## Guide to Safe Landscaping

**Making sure the right plants and trees are located in the right location adds to the safety and natural beauty of your community**



<b>Pipe Safety Zone</b>	Lawns, flowers, low-profile grasses and low-growing herbaceous plants work well within the Pipe Safety Zone.
<b>Border Zone</b>	Small to medium shrubs with a trunk or main branch less than 8" in diameter at full maturity work well within the Border Zone. Diameter is measured 4.5 feet above the ground.
<b>Outer Zone</b>	Large shrubs and small trees with a trunk or main branch less than 36" in diameter at full maturity work well within the Outer Zone. Diameter is measured 4.5 feet above the ground.

*Please note easement widths can vary and the above represents best practices and guidance for safe landscaping near gas pipelines.*



### Tree-by-Tree Review

- We understand how important trees are to your community and the environment
- To ensure we are only replacing trees that pose an emergency access or safety concern, we conduct a review of all trees near the gas pipelines
- The review is completed by gas safety experts and involves analyzing such factors as tree height, species and distance from the pipe
- **In Sunnyvale, for trees in public areas or on city-owned property, it was determined that approximately 81% of the trees may remain in place with ongoing monitoring, including Homestead Road**
- For trees on private property, we will continue to work with owners to share the results and, together, work to develop a path forward
- If a tree poses a safety concern and needs to be replaced, such as along E. California Ave, PG&E works together with the property owner to offer replacement trees and restore the natural beauty of the area

## E. California Avenue Proposed Restoration Plan

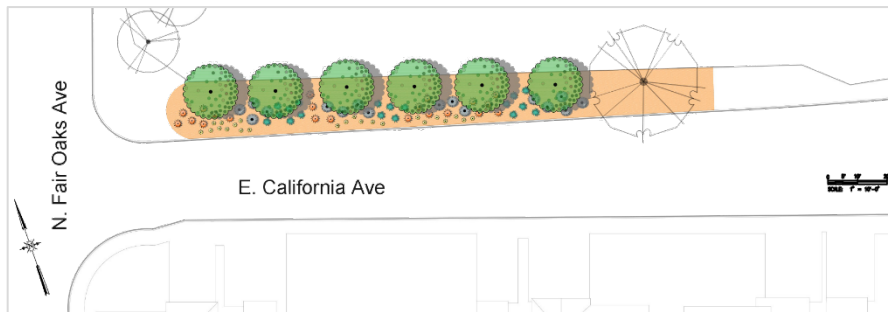




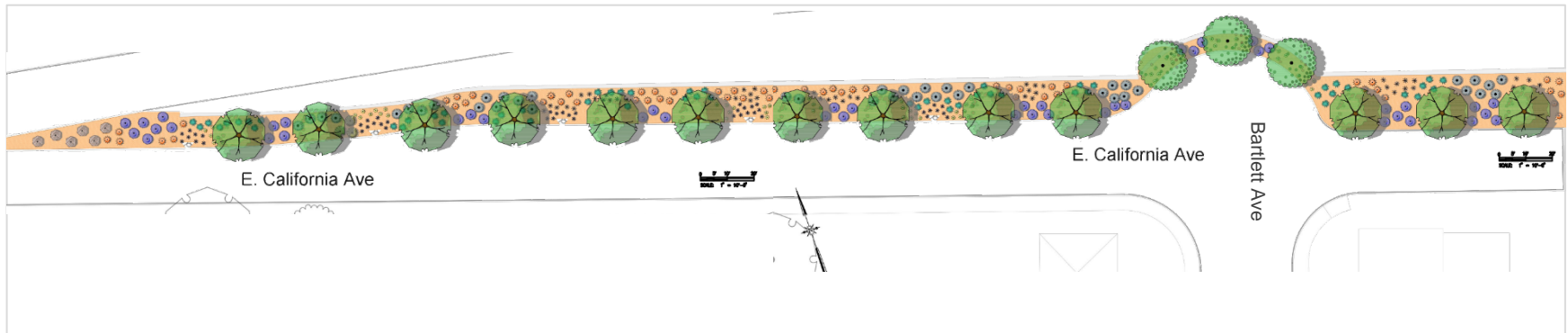
## E. California Avenue Proposed Restoration Plan

- Below is the proposed restoration plan. We will continue to work with the Community to finalize this plan.

### Location A



### Location B



## Community Partnership and Outreach

- It is important to us that our customers and communities fully understand and support this safety work
- Our outreach includes:
  - Meeting with city leaders to discuss the safety risks and work together to plan for gas safety work in public areas
  - Communicating about gas pipeline safety and the planned work to nearby residents prior to any work taking place
  - Contacting private property owners regarding any safety work proposed for their property
- We will not move forward with any planned work until we have a signed agreement in place with the customer



## Contact Information

- For questions regarding the upcoming pipeline safety work, please contact Rabiah Khalid, Local Government Relations Representative, at **1-408-282-7206** or by email at **[rabiah.khalid@pge.com](mailto:rabiah.khalid@pge.com)**
- For more information, visit us at **[pge.com/GasSafety](http://pge.com/GasSafety)**



“In Santa Clara County, it is imperative that quick access to gas pipelines are maintained in the event of an emergency.”

**Kenneth R. Kehmna, Fire Chief, Santa Clara County Fire Department**



# Thank You

