

1111 Lockheed Martin Way Moffett Towers II June 14, 2016



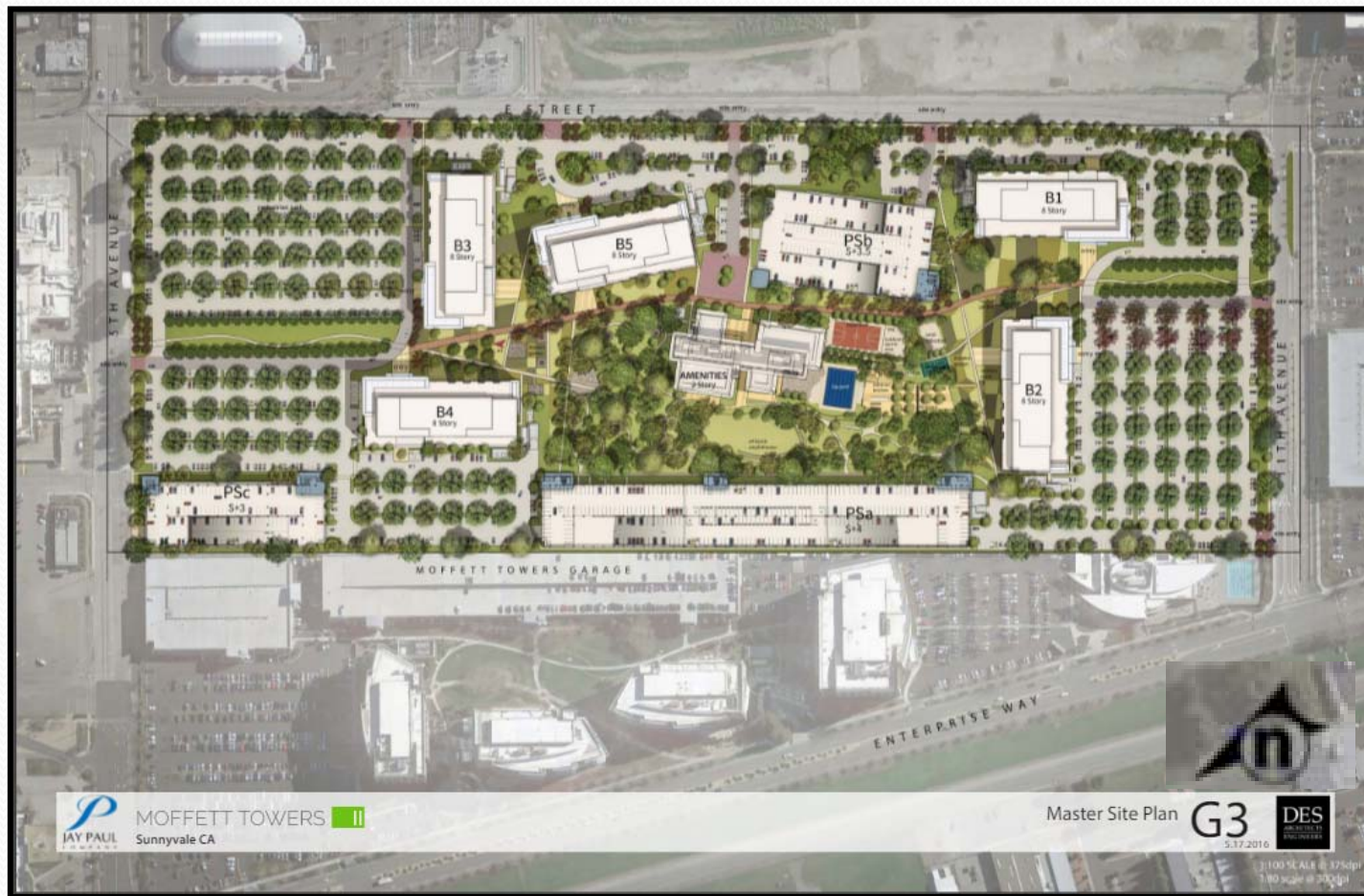
City Council Meeting



Project Description

- Demolition of 924,500 sf existing buildings
- Construction of
 - 5 eight-story Office Buildings
 - Amenities building
 - 3 Parking structures
- Each building 320,359 sf

Site Plan





Background

- April 9, 2016 - Council Approved
 - General Plan Amendment
 - Rezone (MP-TOD)
 - Subsequent EIR
- May 23, 2016-PC Recommended Approval
 - Major Moffett Park Special Development Permit
 - Development Agreement

Moffett Park Special Development Permit

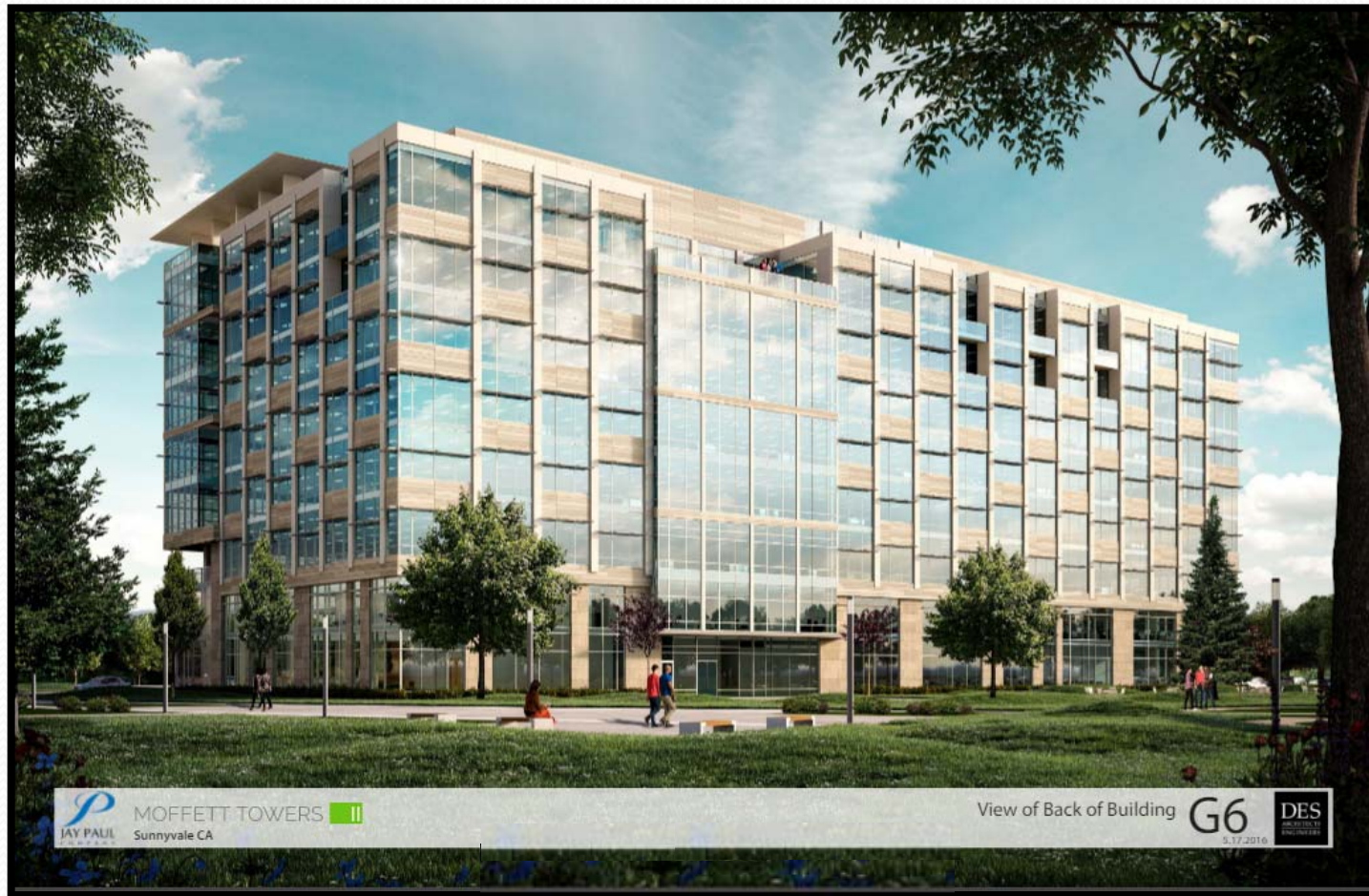
- Architecture
- Landscape and Site Improvements
- Access and Parking
- Green Building Incentive



View of Front of Building



View of Back of Building



MOFFETT TOWERS II
Sunnyvale CA



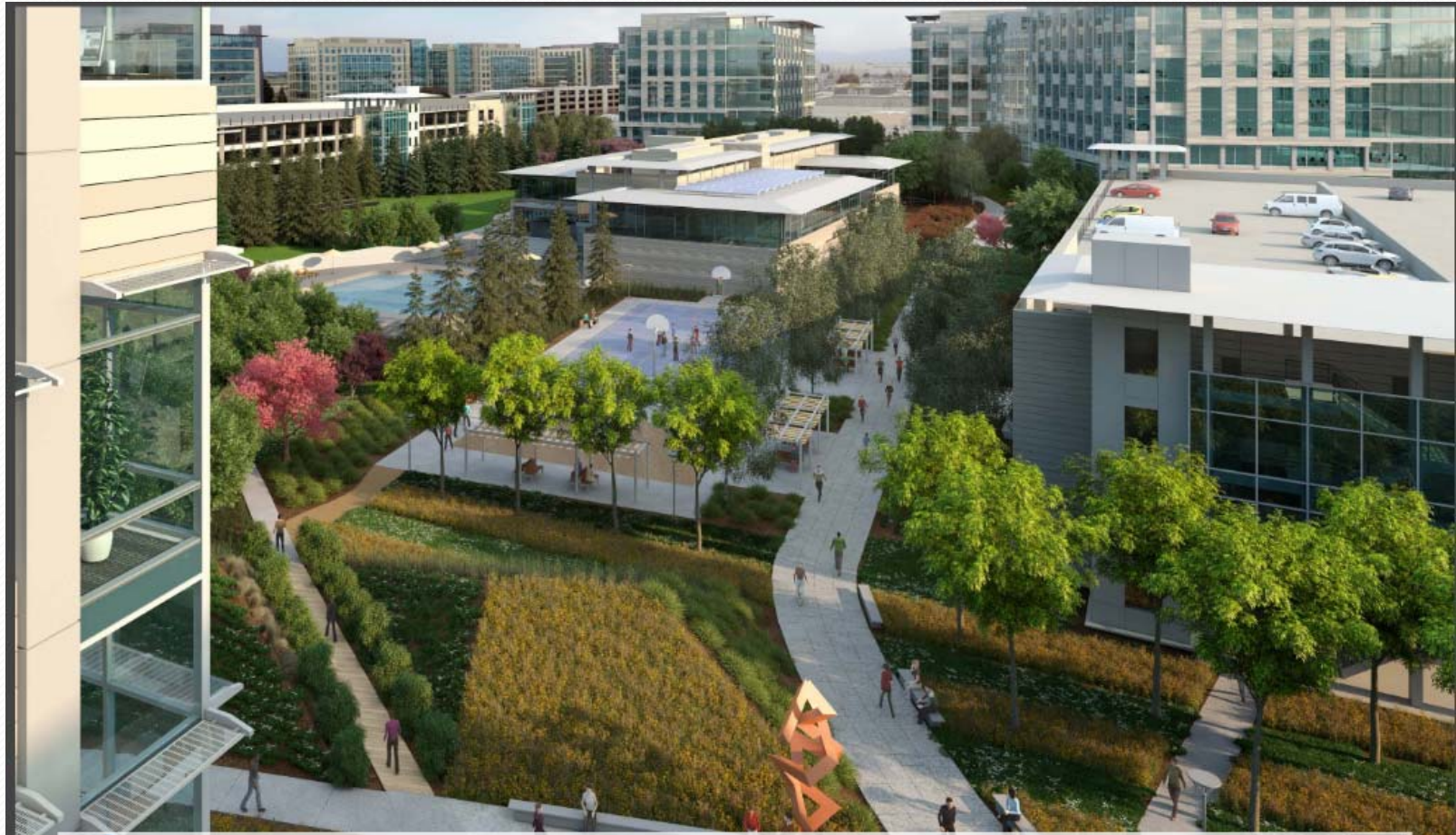
View of Back of Building

G6

5.17.2016



Amenities Building



Landscape and Site Improvements





Access and Parking

- Access is from 5th and 11th Avenues and E Street
- Pedestrian access available from Moffett Park Drive and Mathilda Avenue
- TDM measures incorporated

Parking Structure



MOFFETT TOWERS II
Sunnyvale CA

Parking Structure C: View From New 5th Street

G11
5.11.2016





Access to Development Reserve & Green Building Incentive

- Two Tier Incentive Program
 - 20% FAR increase-LEED Gold
 - 10% FAR increase- additional Green Building incentives
- New Buildings- LEED Platinum rating
- Design Features, landscaping, preservation of trees
- Community Benefits



Development Agreement

- **\$11** million value
 - 101/237 Mathilda Interchange Improvements
- **\$4.5** million value
 - Design and Construction of E Street
- **\$7** million contribution
 - Funding for three Public Safety Officers for 7 years



Recommendation

- Approve the Moffett Park SDP
- Introduce an Ordinance approving & adopting the Development Agreement