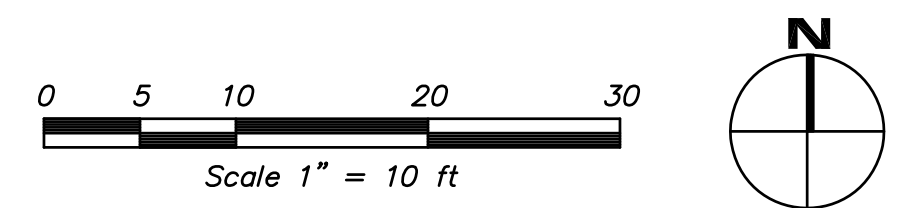
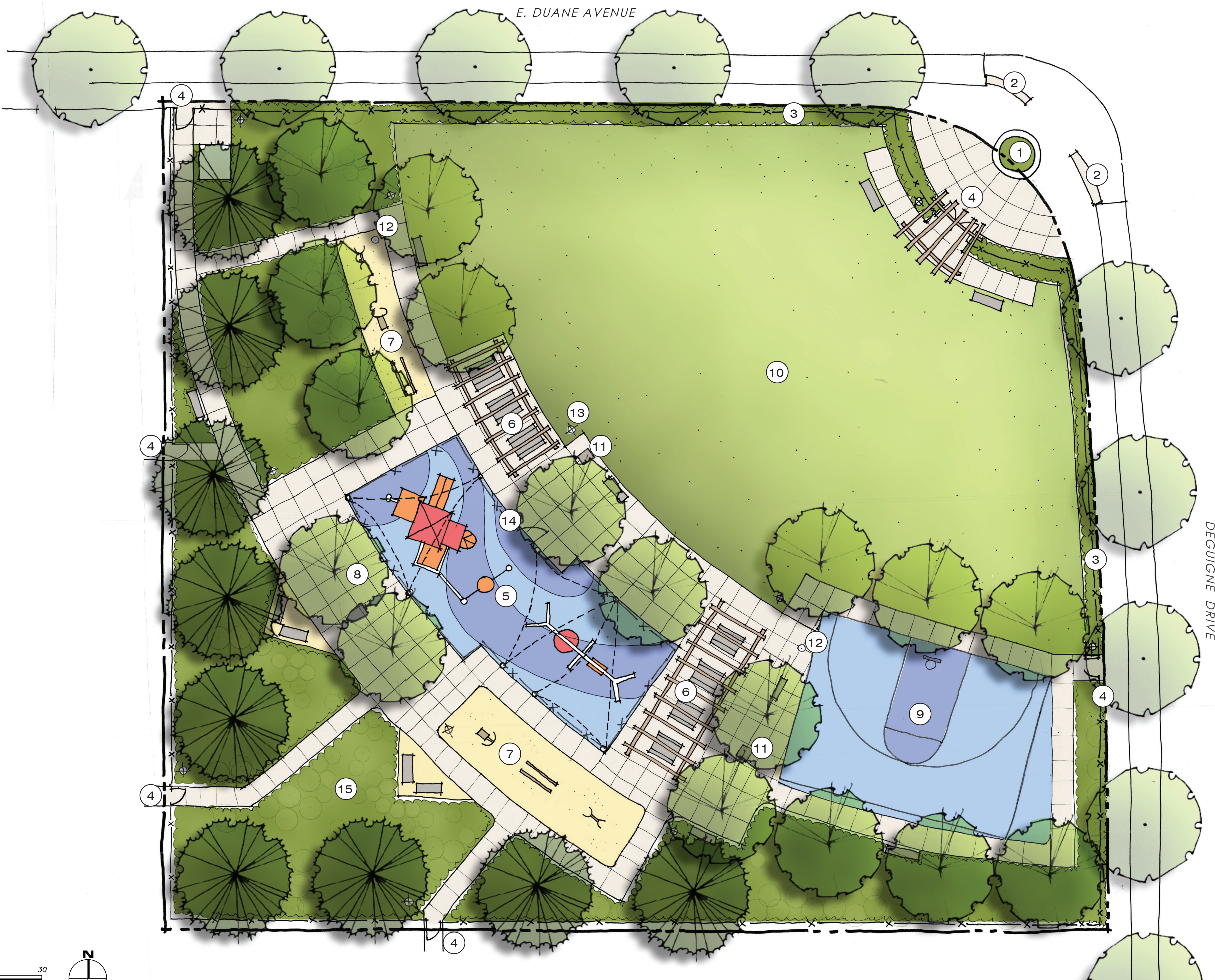


LEGEND

- ① PUBLIC ART
- ② NEIGHBORHOOD IDENTITY WALLS
- ③ 4'-0" HT OPEN METAL FENCE
- ④ PEDESTRIAN ENTRY
- ⑤ PLAY EQUIPMENT WITH SHADE AWNING
- ⑥ PICNIC TABLES UNDER SHADE STRUCTURE
- ⑦ FITNESS AREA & EQUIPMENT
- ⑧ SMALL GROUP SEATING AREA
- BENCH, TYPICAL
- ⑨ HALF BASKETBALL COURT
- ⑩ PLAY LAWN, ARTIFICIAL TURF
- ⑪ BBQ
- ⑫ DRINKING FOUNTAIN WITH WATER BOTTLE FILLER
- ⑬ PEDESTRIAN LIGHTING
- ⑭ FENCE WITH INTERACTIVE PANELS & SELF CLOSING GATE
- ⑮ DROUGHT TOLERANT, LOW MAINTENANCE, MEDITERRANEAN PLANT MATERIAL



MINI PARK CONCEPT ONE



THE VALE
LANDSEA HOLDINGS CORPORATION



9 JANUARY 2017