









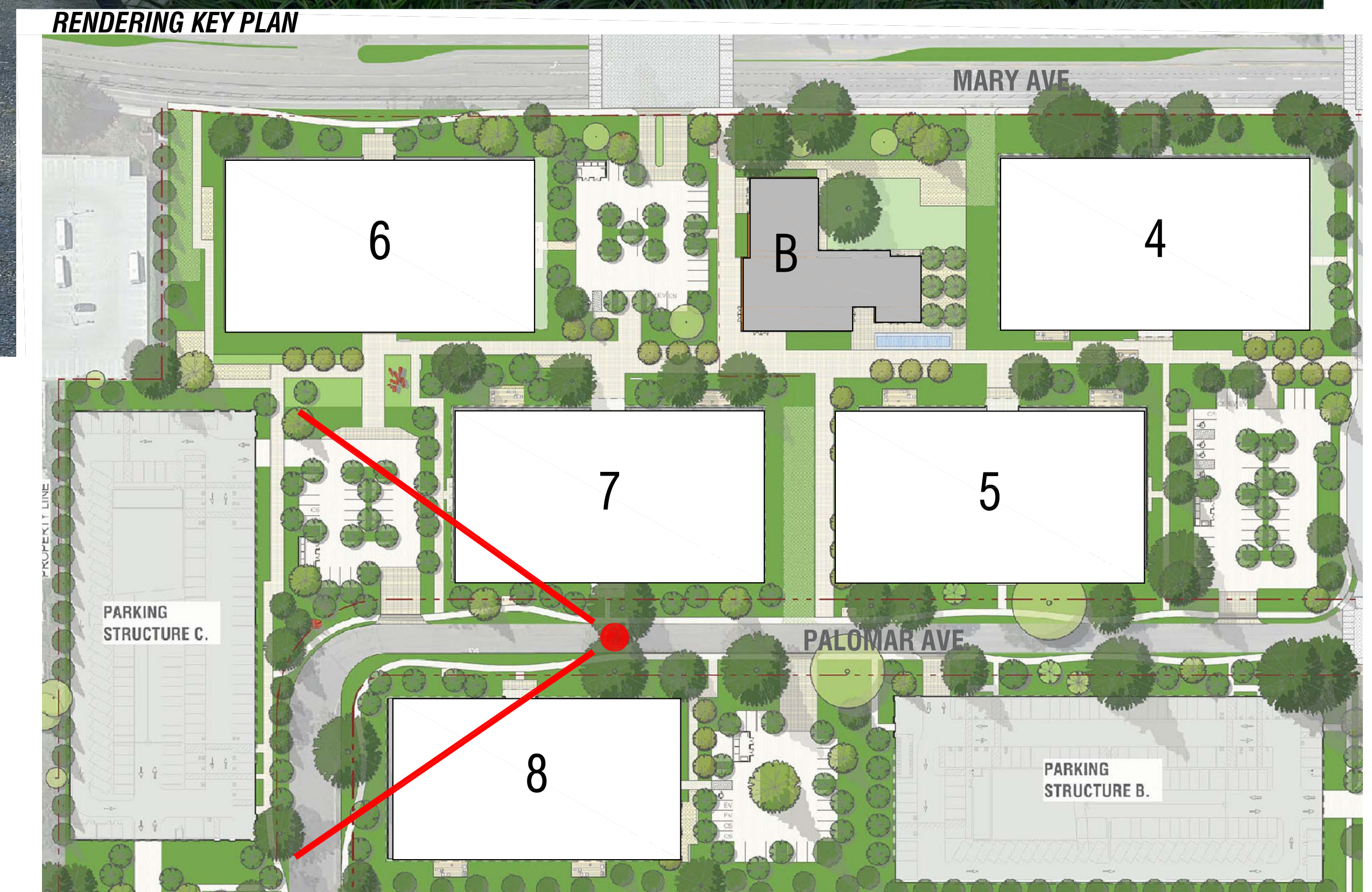
# PATHLINE PARK | OFFICE BUILDING ENTRIES







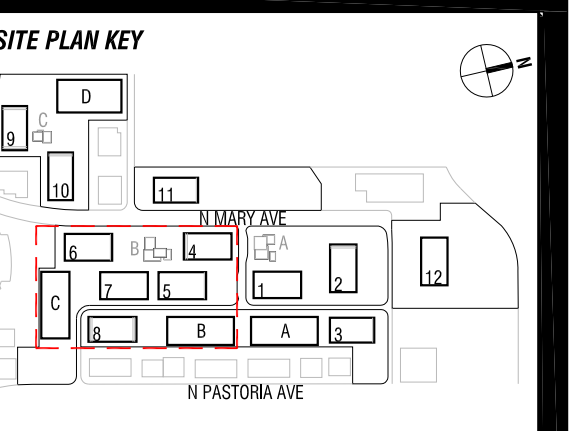
VIEW OF PARKING STRUCTURE C FROM PALOMAR AVENUE



**IRVINE COMPANY**  
**OFFICE PROPERTIES**  
5451 GREAT AMERICA PARKWAY, SUITE 201, SANTA CLARA CA 95054  
TEL (408) 330.0100 WWW.IRVINECOMPANYOFFICE.COM



**PATHLINE PARK**



DATE: MAR. 06, 2017  
PROJECT #: 13154.30  
SCALE: NTS  
0 20 40

NORTH

SHEET TITLE

RENDERINGS

SHEET NUMBER  
R1.13

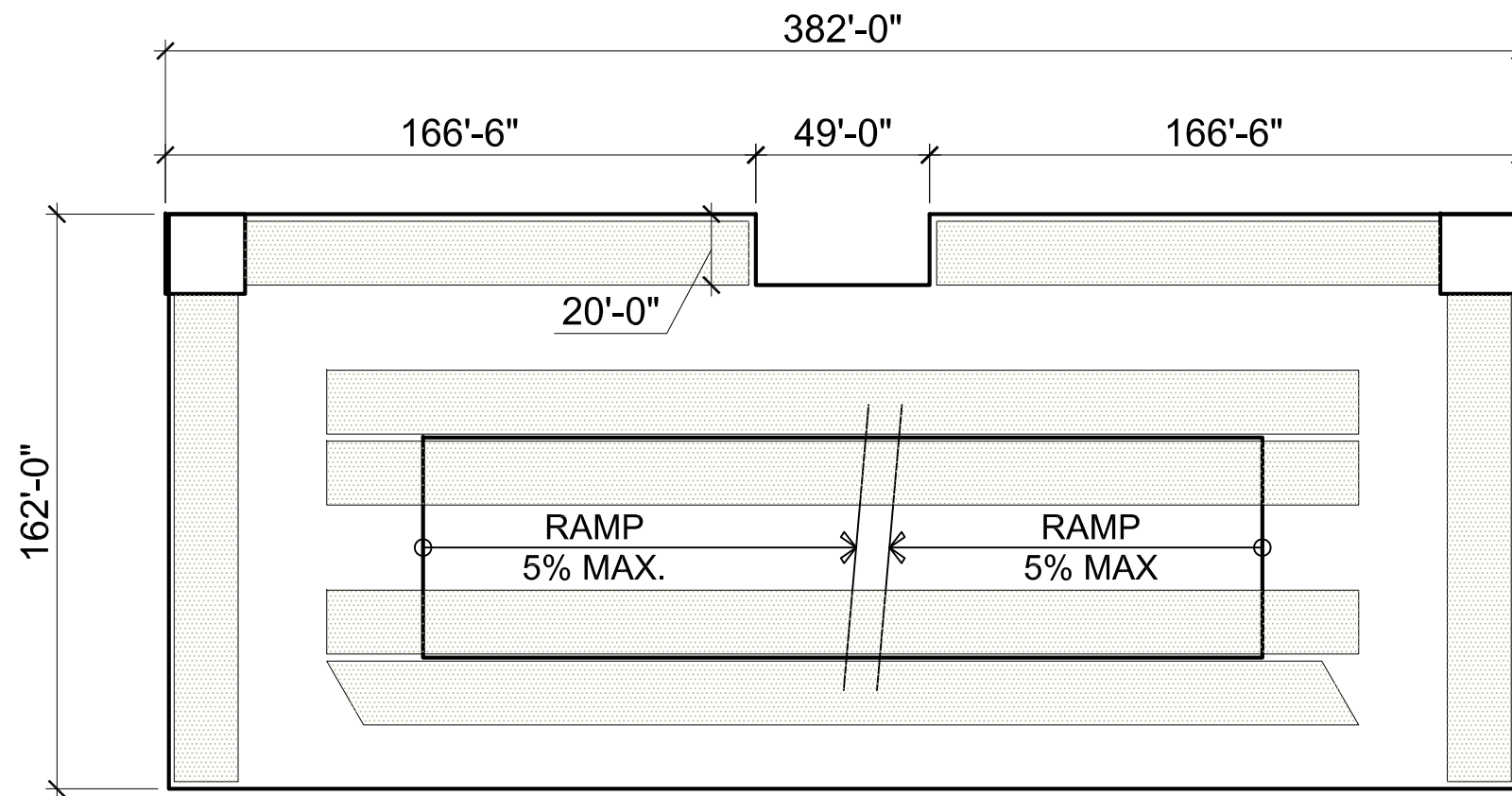
**ARQUITECTONICA**



## PARKING STRUCTURES - A (PS-B SIM.)

### : 382' BUILDING LENGTH & NOTCH ON CENTER

- 49' WIDE x 20' DEEP NOTCH
- NO PARKING LOSS OR GAIN
- TOTAL PARKING SPACES : 1,060 STALLS
- BUILDING LENGTH INCREASED BY 7' (FROM 375')



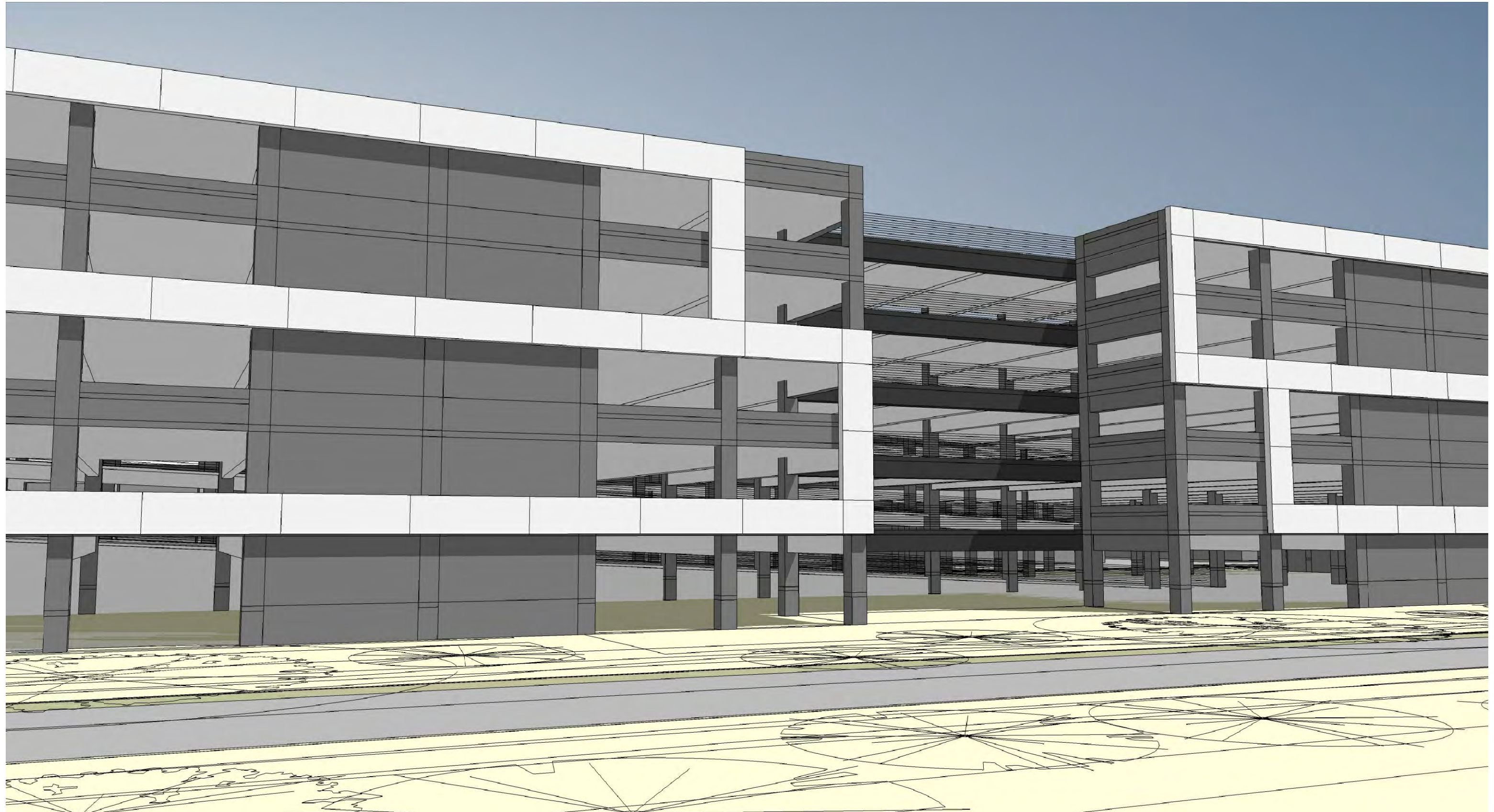
PARKING STRUCTURE - A PLAN





PARKING STRUCTURES A & B NOTCH PLAN (DARKER COLOR & CABLE RAIL AT NOTCH)





PARKING STRUCTURES A & B NOTCH PLAN (DARKER COLOR & CABLE RAIL AT NOTCH)