

# City of Sunnyvale

## Civic Center Modernization Master Plan

### Civic Center Masterplan and City Hall Alternates

September 13, 2017 | Parks and Recreation  
Commission: 7:00pm

# AGENDA

---

- 01** **SCHEDULE  
& UPDATES**
- 02** **MASTER PLAN GOALS  
& SUCCESS CRITERIA**
- 03** **SITE ASSESSMENT/  
DUE DILIGENCE**
- 04** **TWO ALTERNATIVES**
- 05** **NEXT  
STEPS**

# **01** **SCHEDULE & UPDATES**

# SCHEDULE

## Phase 1 : Assessments (Defining the Problem)

- ✓ Visioning Meeting (6/14)
- ✓ 3 Community Focus Group Meetings (6/14)
- ✓ Report to Project Manager (6/28)
- ✓ Core Team Meeting (7/3)
- ✓ Sustainability Commission Meeting (6/19)
- ✓ City Council Meeting Decision (7/25)
- ✓ State of the City Address (7/29)

## Phase 2 : Alternatives Development

- ✓ Core Team Meeting (9/5)
- ✓ City Council Study Session (9/12)
- ✓ Parks + Rec Meeting (9/13)
- ✓ **Arts Commission Meeting (9/20)**
  - Core Team Meeting (10/2)
  - Board of Library Trustees Meeting (10/2)
- ★ **Community Meeting (10/12)**
- ★ **Feedback on 2 Alternatives**
  - Bike + Pedestrian Meeting (10/19)
  - Planning Commission Meeting (10/23)
  - Core Team Meeting (10/31)
- ★ **City Council Meeting (11/7)**

## Phase 3 : Preferred Alternate Development

- Sustainability Commission Meeting (12/18)
- Core Team Meeting – Review Draft EIR (1/16/18\*)
- Release of the Draft EIR (3/2/18\*)
- Public Review Period Ends (4/16/18\*)
- Team Publishes Final EIR (8/3/18\*)
- Planning Commission Meeting–certifies EIR (8/21/18\*)
- **City Council Meeting on Final Master Plan (9/18/18\*)**

*\*2018 Dates are tentative*

# Where We Left Off

City Council voted on 7/25 on the following:

**1. Build 11,000sf addition to Public Safety**



**2. Demolish the City Hall Annex Building & Include NOVA in the new City Hall**



# **02 MASTER PLAN GOALS & SUCCESS CRITERIA**

# Vision Statement

---

***EFFICIENT, FUNCTIONAL, & FLEXIBLE  
SPACE  
SUPPORT INNOVATIVE SERVICE DELIVERY  
REFLECT THE IDENTITY OF SUNNYVALE  
INSPIRE COMMUNITY PRIDE  
PROMOTE CIVIC ENGAGEMENT  
PRESERVE TREES AND OPEN SPACE  
SUPPORT PARTICIPATORY GOVERNANCE***



# Success Criteria

---

- A. Improve the Quality of Services**
- B. Fiscally Responsible**
- C. Accessible to All Citizens**
- D. Civic and Community Engagement**
- E. Increase Usability of Open Space**
- F. Leaders in Sustainability**



# Community Input : Focus Groups – June 14

**These are not project criteria but general input to be weighed against project goals, priorities & resources:**

- City Hall as “face” of Sunnyvale be iconic & landmark, taller than 2 stories—maximize open space
- Preserve trees and build a cohesive campus with great open space
- Less parking
- Keep the community gardens
- Be bold in sustainability goals
- Wayfinding & Communication: multilingual, clear, and understood by all

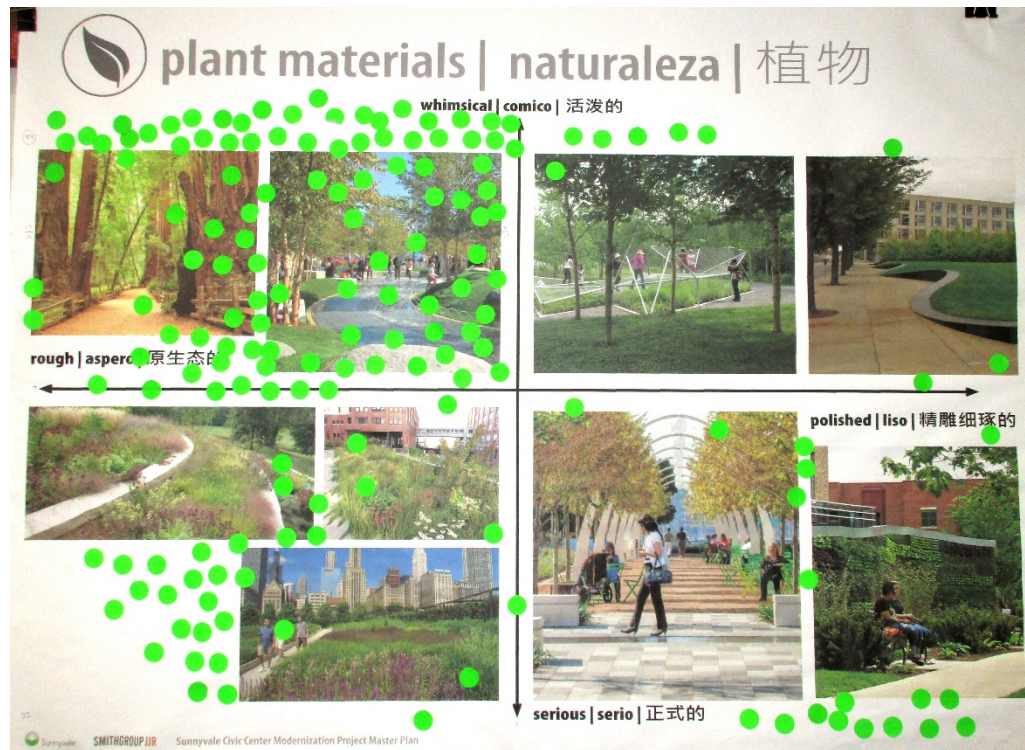


*June 14, 2017 – Held 3 Community Focus Group Sessions*

# Community Input : Continued

These are not project criteria but general input to be weighed against project goals, priorities & resources:

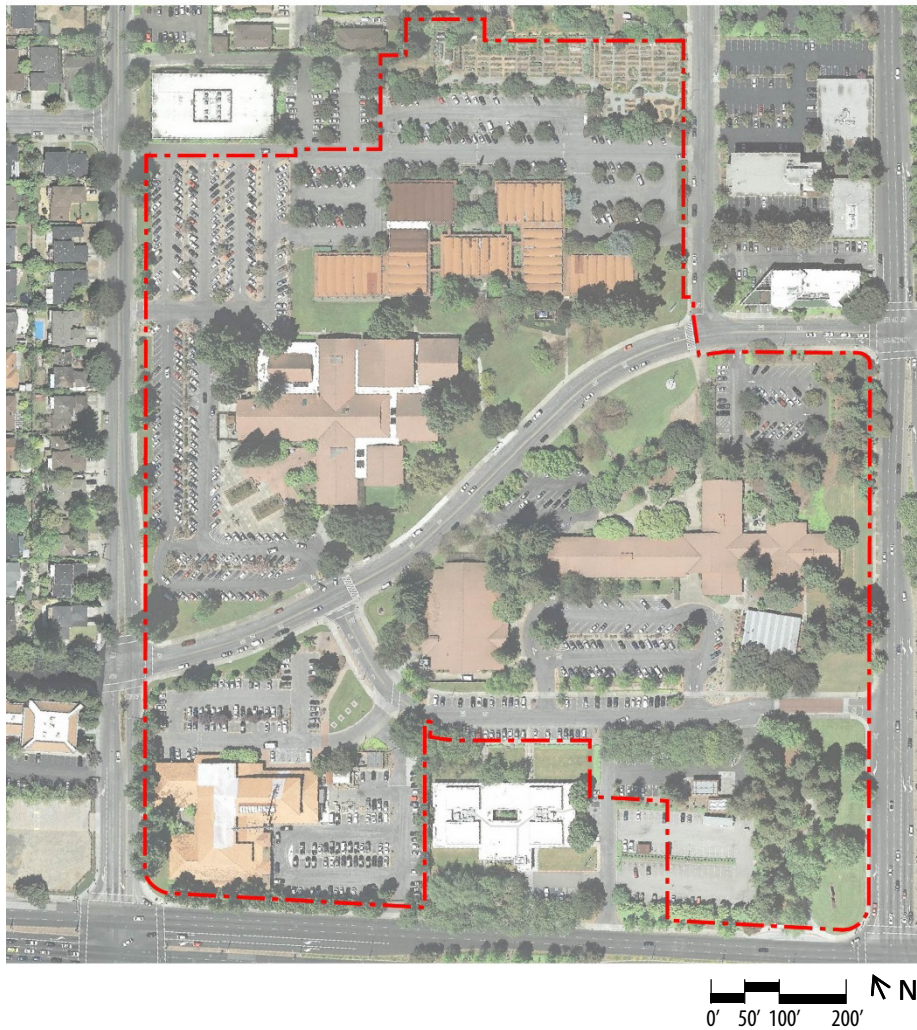
- Incorporate Art
- Welcoming, gathering, democratic
- Multipurpose outdoor spaces, amphitheater, performance, learning
- Campus and all buildings to be warm and inviting to all



July 29, 2017 – State of the City Address: image preference exercise

# **03** **SITE ASSESSMENT / DUE DILIGENCE**

# Existing Site Areas



## Areas

Building Footprints:	16%
Asphalt:	40%
Open Space:	44%

# Unique Site Features

---

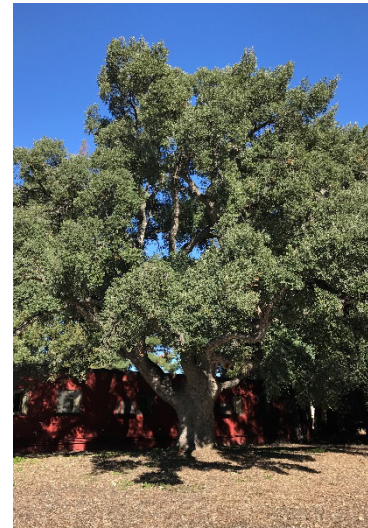


# Trees Types



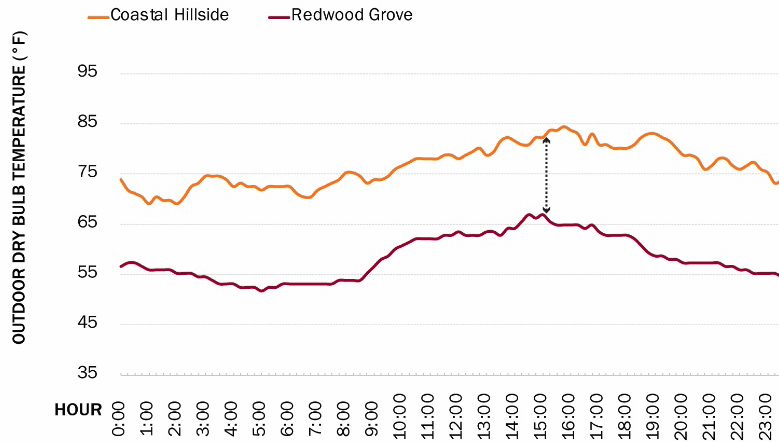
## Key

- Protected Trees
- Redwoods
- Oaks



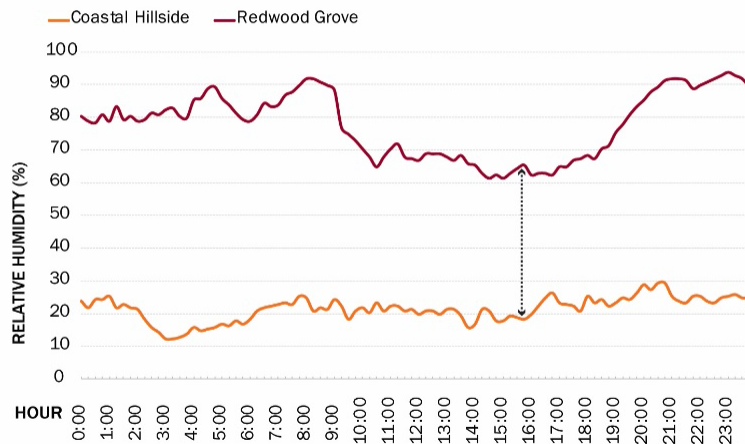
# Redwood Microclimate & 'Natural Evaporative Cooling'

OUTDOOR DRY BULB TEMPERATURE COMPARISON  
REDWOOD GROVE vs. EXPOSED MEADOW (TYPICAL MAY DAY)



\* Data from Big Creek Reserve Weather Stations

RELATIVE HUMIDITY COMPARISON  
REDWOOD GROVE vs. EXPOSED MEADOW (TYPICAL MAY DAY)



\* Data from Big Creek Reserve Weather Stations



# Protected Trees



## Key



# Special Trees



## Key

- Protected Trees
- Special Trees

# Buildable Areas

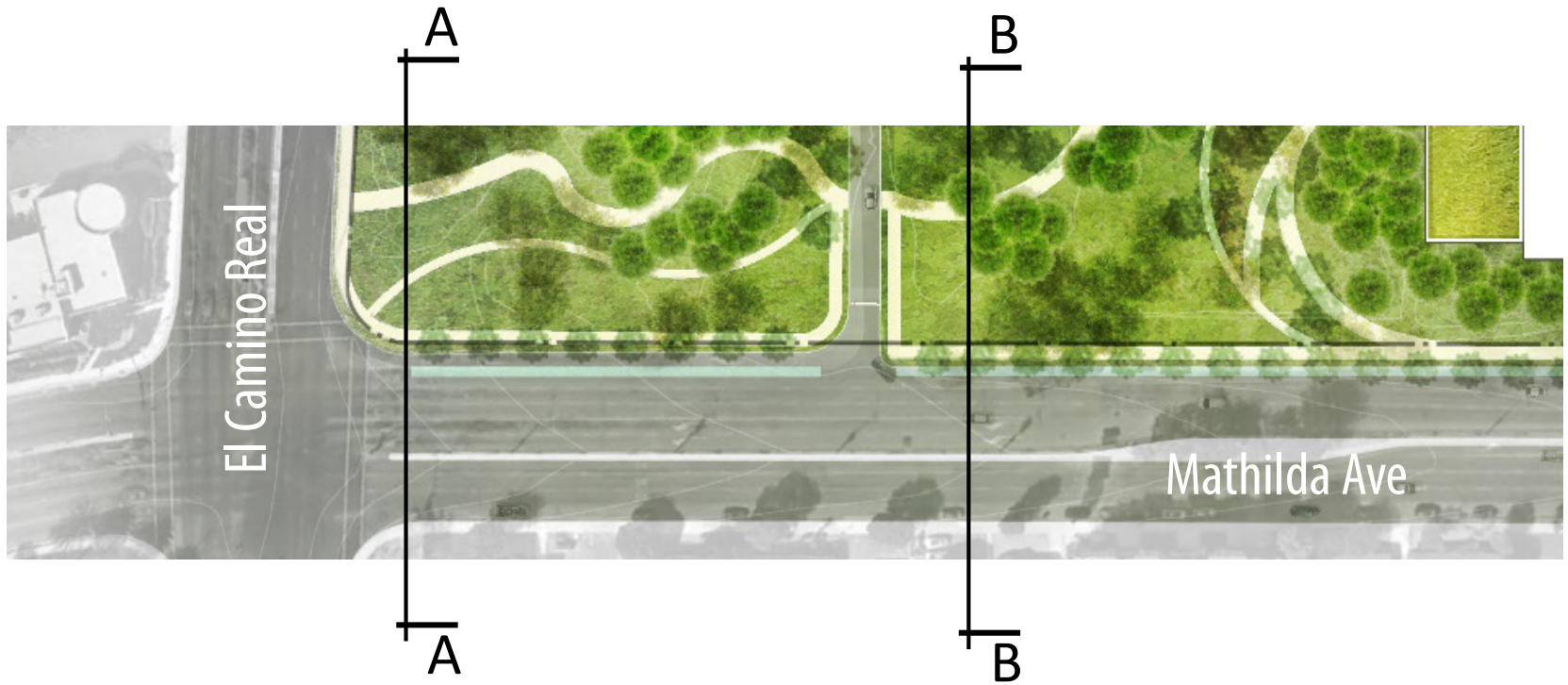


## Minimize Impacts

Site	City Hall	Library	DPS
1	N	N	Y
2	N	N	Y
3	Y	N	N
3a	Y	N	N
4	N	Y	Y
5	N	N	Y
6	N	Y	Y
6A	N	Y	N
7	N	N	N

# Mathilda Ave Bike Lane Improvements

---

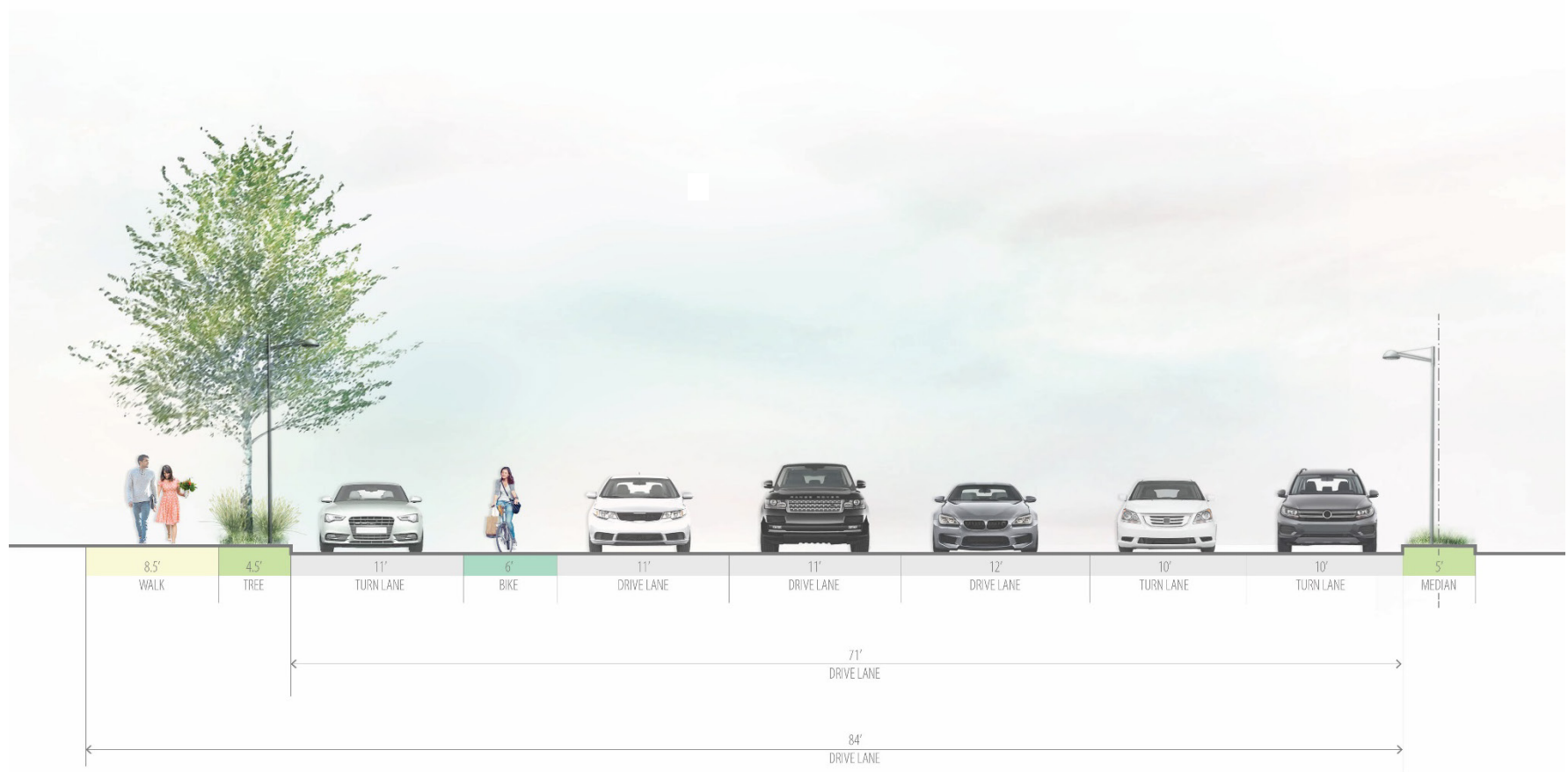


# Mathilda Ave Bike Lane Improvements



## Mathilda Ave at All American Way

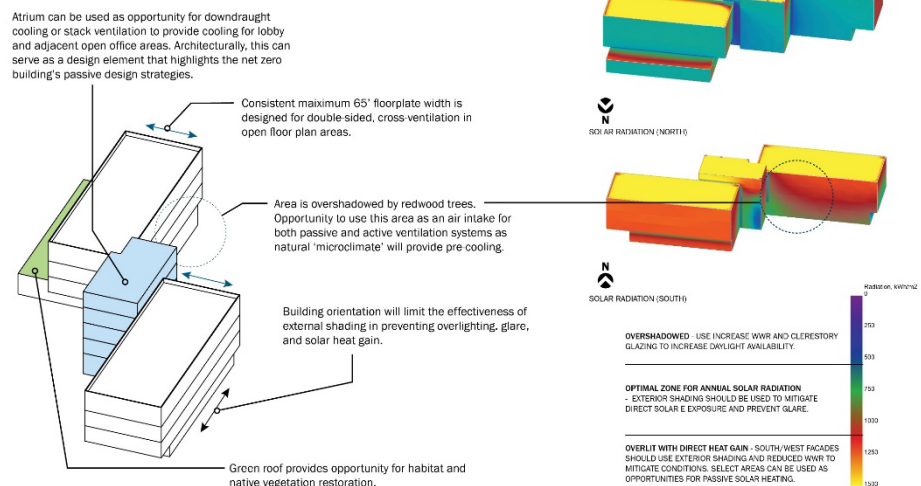
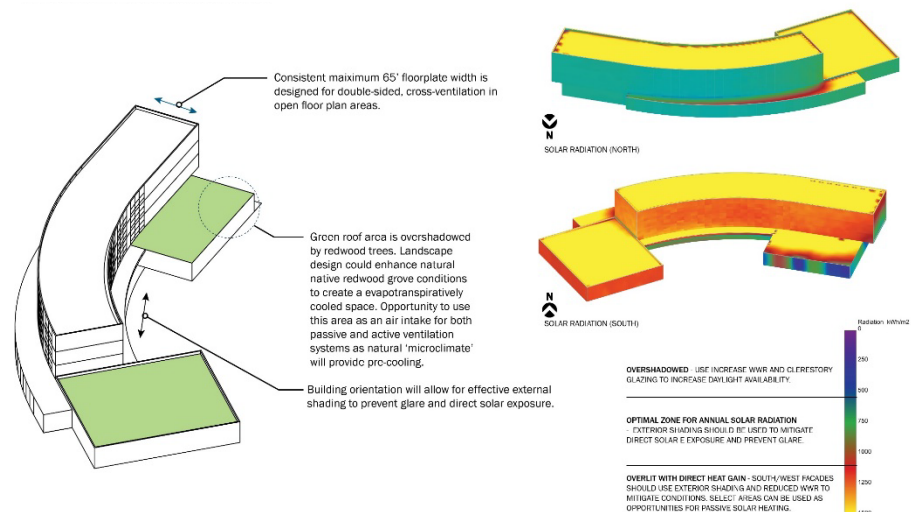
# Mathilda Ave Bike Lane Improvements



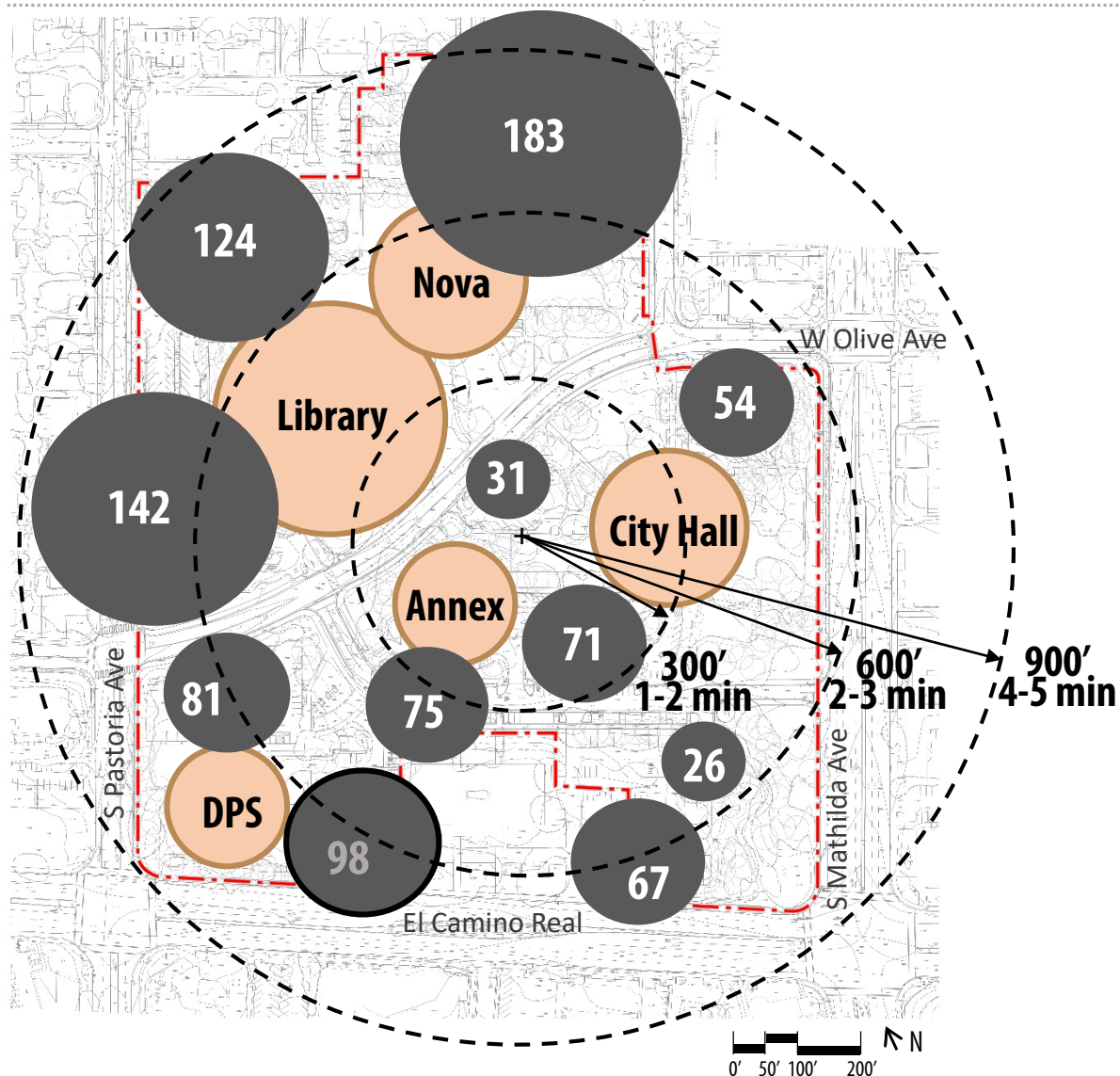
## Mathilda Ave at El Camino Real

# Sustainability Strategies

- LEED Platinum
- Potential for Net Zero
- Natural ventilation
- Optimized daylighting
- Photovoltaics
- Water storage
- Utilizing site features



# Existing Parking Supply



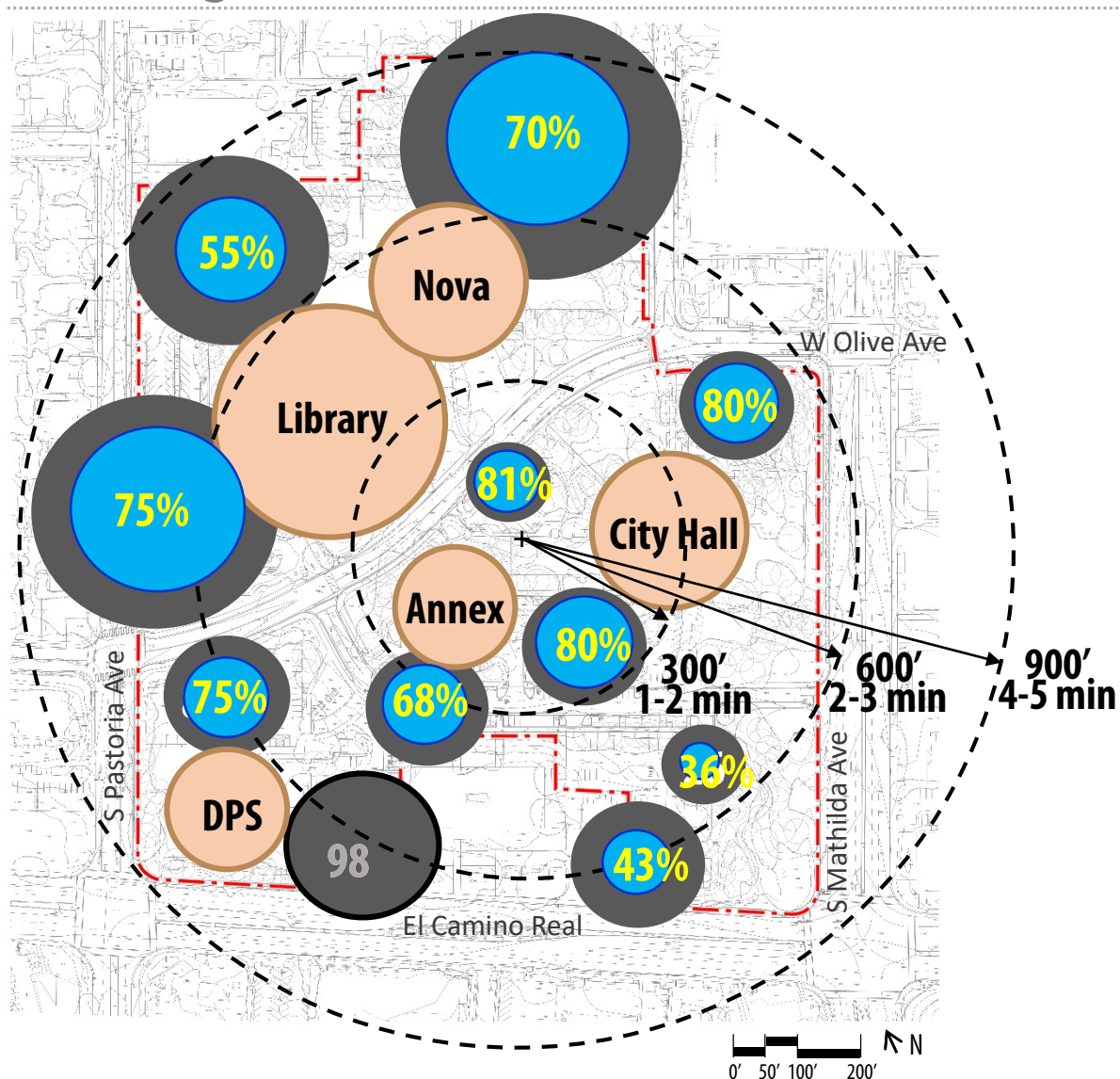
## Parking Summary

Public Spaces 854

DPS Secure\* 98

*\*DPS Secure Parking Spaces not included in Public Space Count*

# Parking Utilization



## Campus-wide Summary

Public Spaces 854

## Average Occupancy

75%

## So What?\*

Total Parking Spaces 854 Spaces

Average Utilization 640 Spaces

*\*DPS Secure Parking Spaces not included in Public Space Count*

# Master Plan Parking Demand

Program	Existing GSF	Existing Parking	Proposed Phase 1 GSF	Proposed Master Plan GSF	PARKING DEMAND MODEL #1 : City Code	PARKING DEMAND MODEL #2 : ULI Shared
City Hall	96,000*		104,000**	104,000**	260	247
Library	61,000		61,000	118,000	392	372
DPS	41,000		52,000	60,000	120	114
<b>Total</b>	<b>198,000</b>	<b>854 Spaces</b>	<b>217,000</b>	<b>282,000</b>	<b>772 Spaces</b>	<b>731 Spaces</b>

\*Includes City Hall, City Hall Annex, South Annex, and Sunnyvale Office Center

\*\*Includes EOC, NOVA and Fire Protection

Current Civic Center Parking Spaces

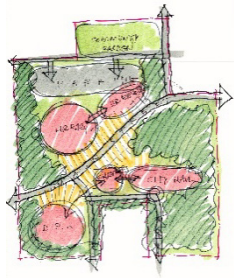
854 Spaces

Current Civic Center Average Utilization

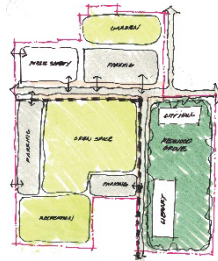
640 Spaces

# 04 TWO ALTERNATIVES

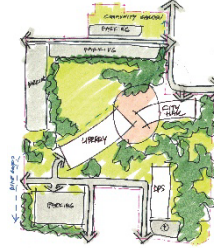
# Planning Process



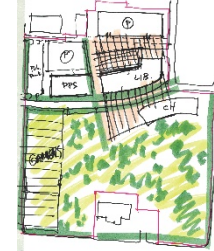
Option 1  
**Keeping Olive**



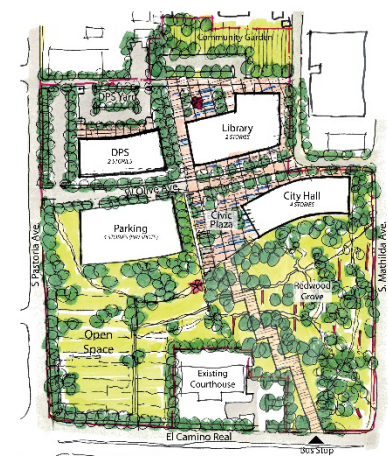
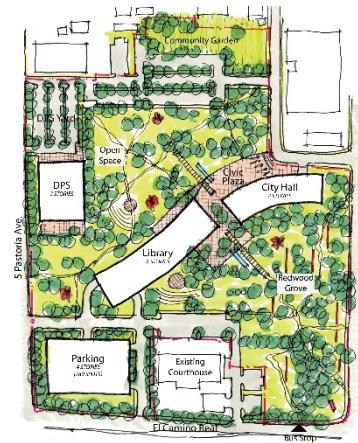
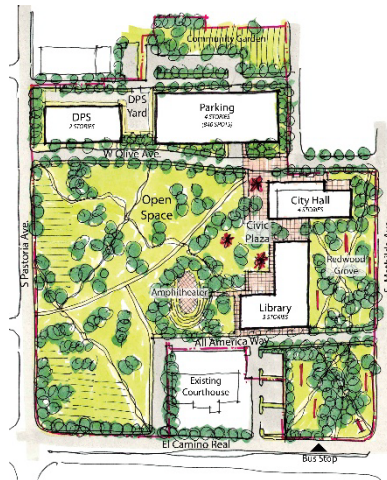
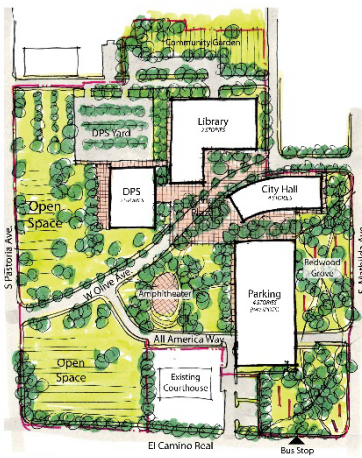
Option 2  
**Civic Green**



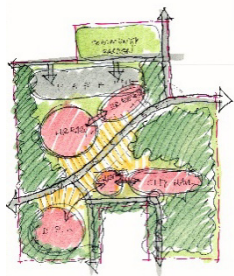
Option 3  
**New Olive**



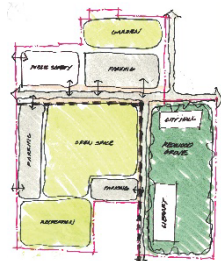
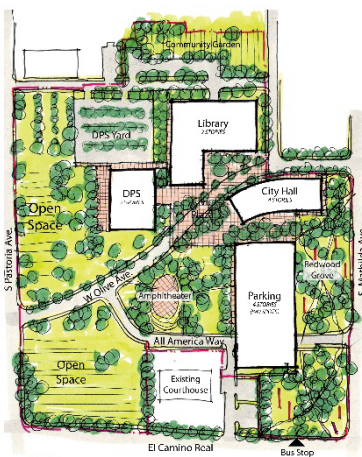
Option 4  
**Civic Plaza**



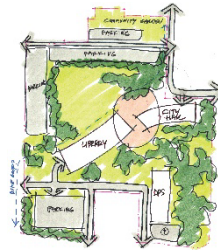
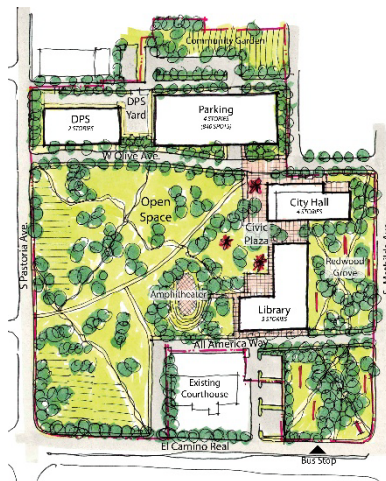
# Planning Process



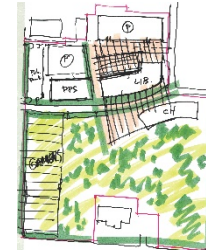
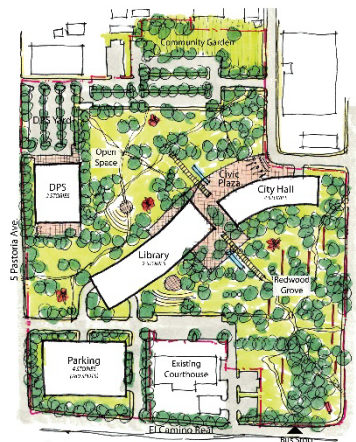
Option 1  
**Keeping Olive**



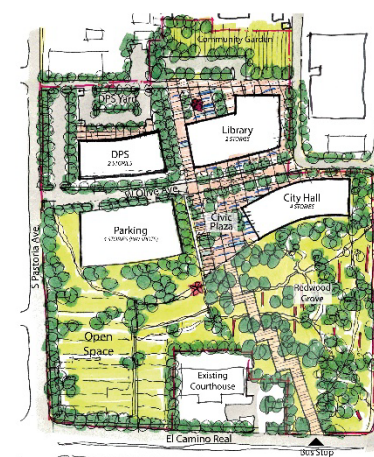
Option 2  
**Civic Green**



Option 3  
**New Olive**

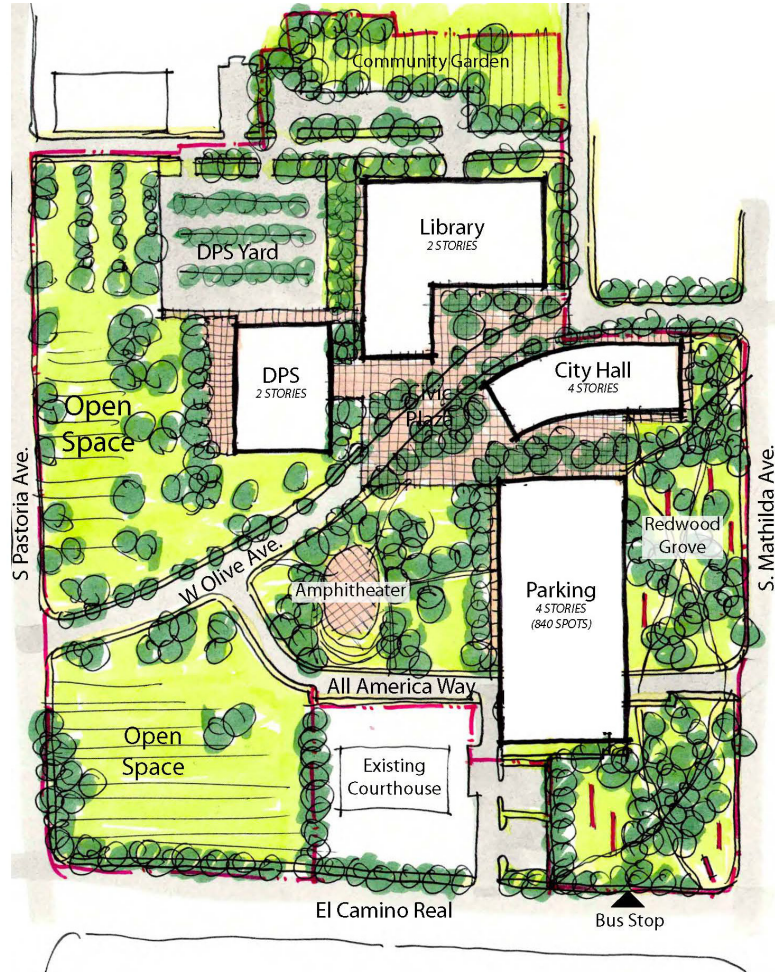


Option 4  
**Civic Plaza**

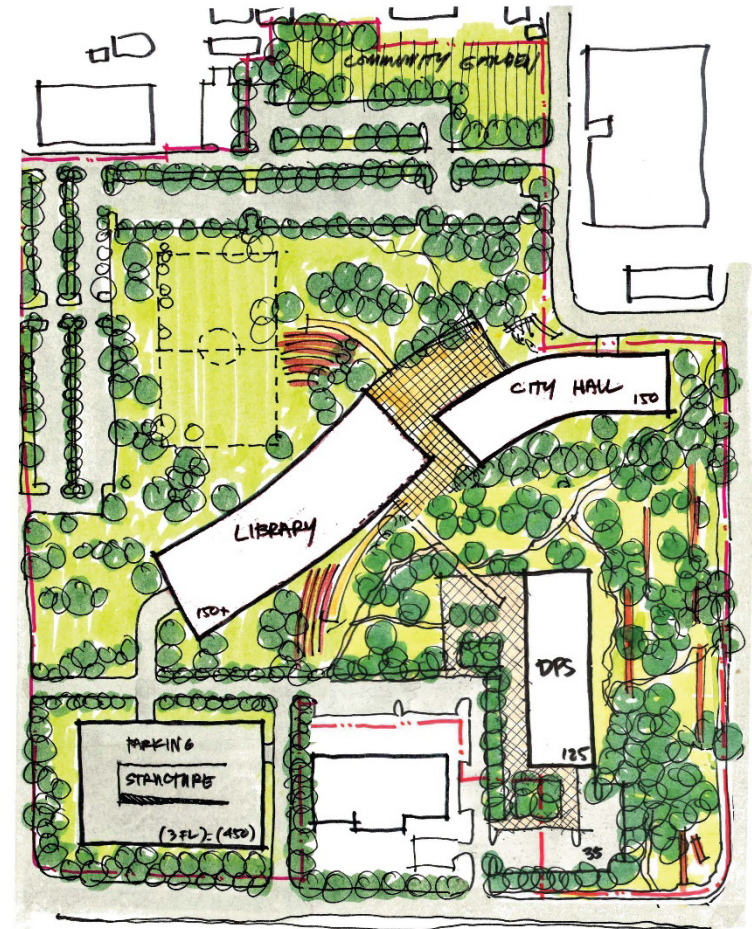


# Two Alternatives

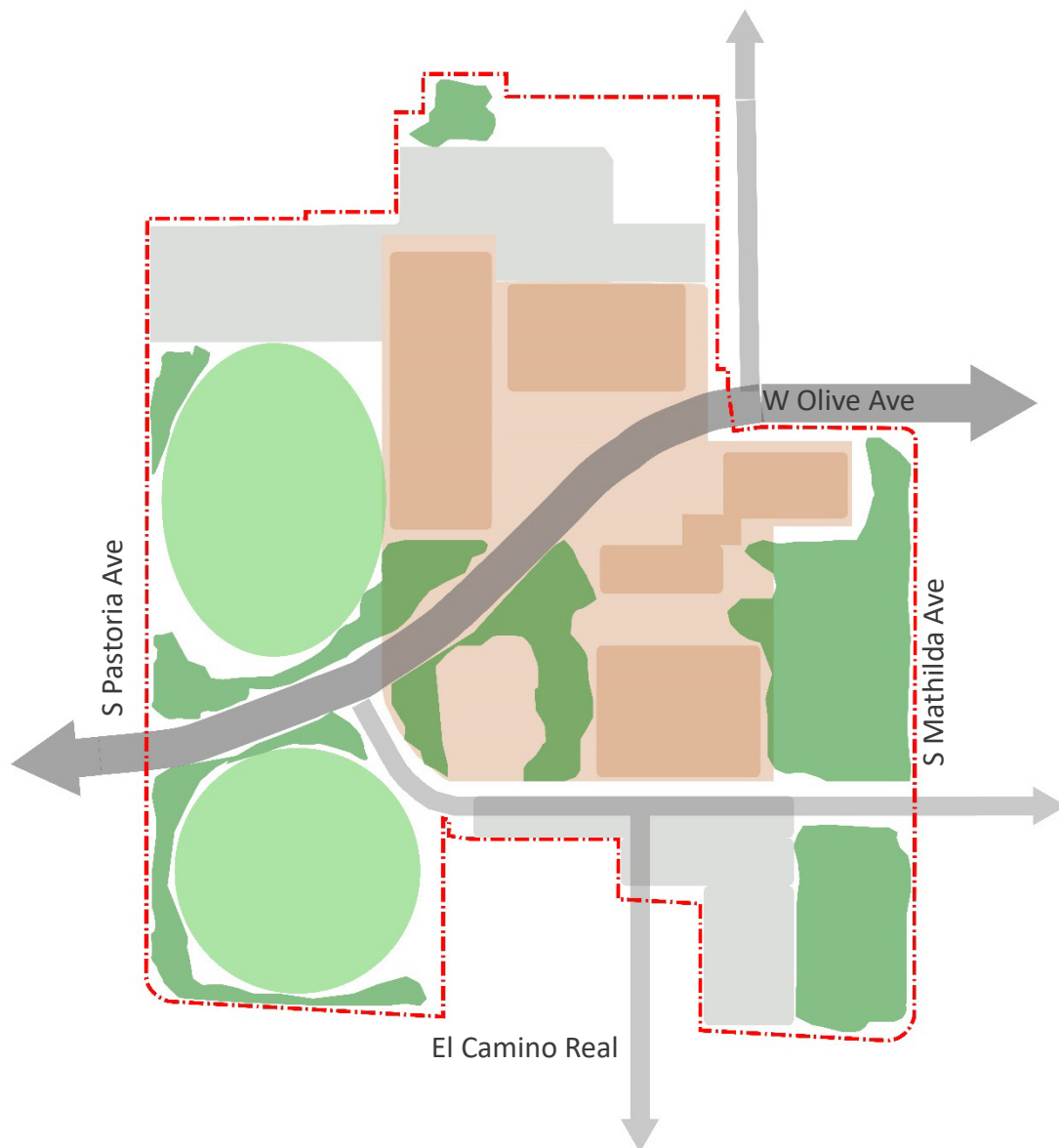
## Option 1



## Option 2



# Option 1: Compact Central Plaza + Main Street



- Olive as a great street, car is the invited guest
- Central Urban Plaza framed by Civic Buildings
- Parking on the perimeter serviced by All-American Way and Sutter Extension
- Iconic Trees Framing Mathilda and Council Chambers
- Large Open Space on Pastoria

- Building
- Plaza
- Woodland
- Open Lawn



Road

# Option 1: Master Plan



## Proposed Areas

Building Footprints:	15%
Asphalt:	18%
Open Space:	67%

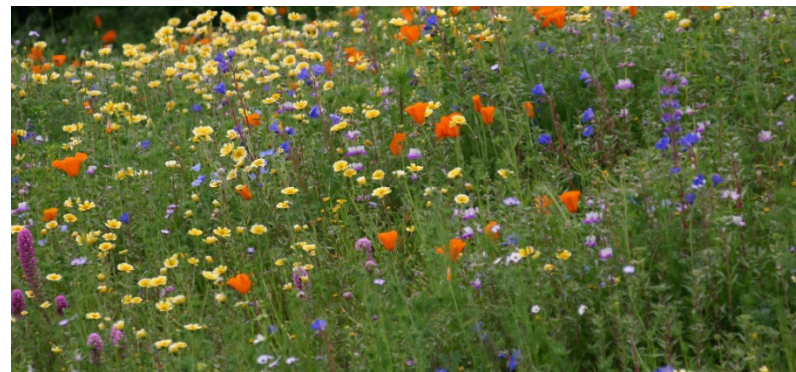
## Existing Areas

Building Footprints:	16%
Asphalt:	40%
Open Space:	44%

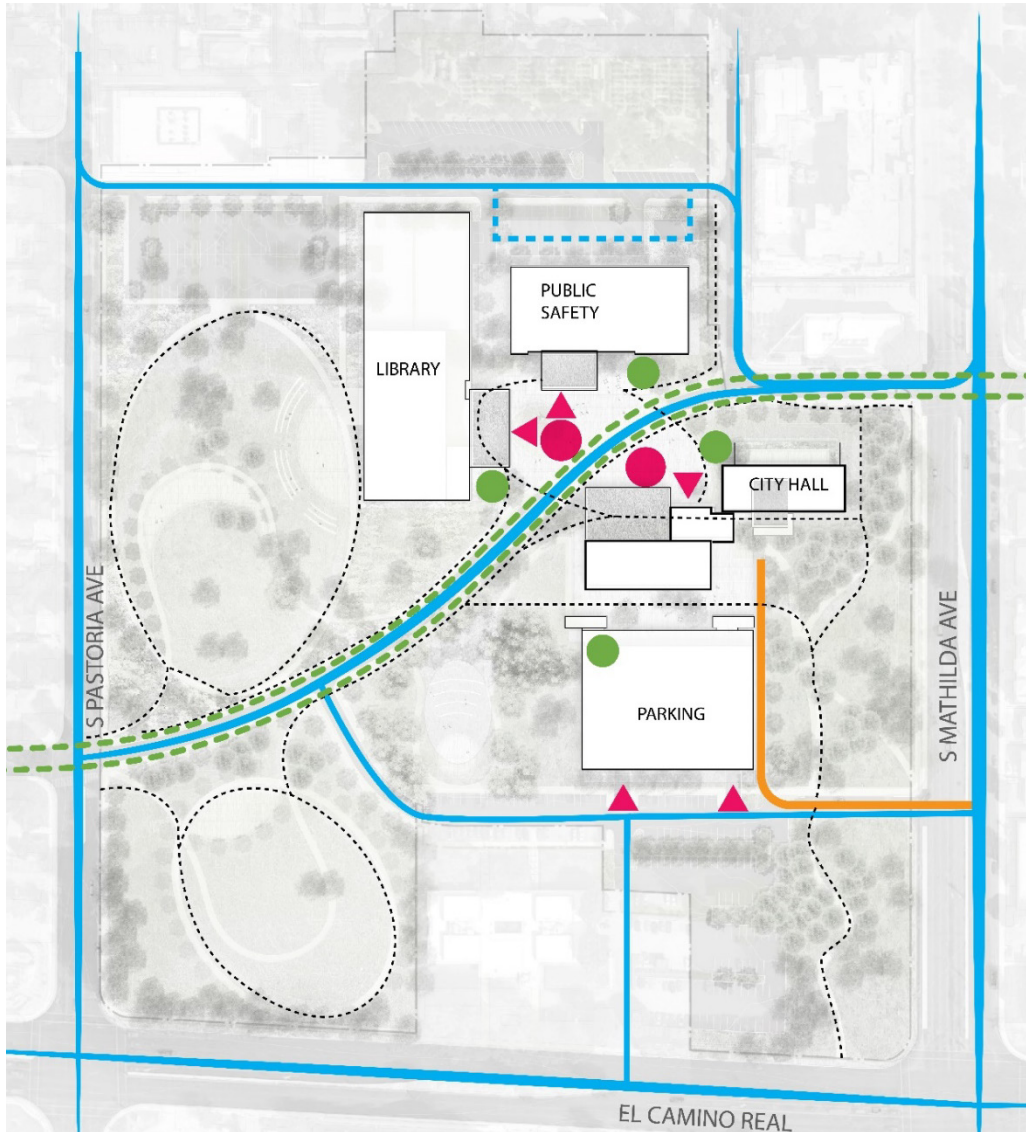
# Open Space Precedents – Use of Space



# Open Space Precedents – Planting Palette



# Option 1: Site Circulation

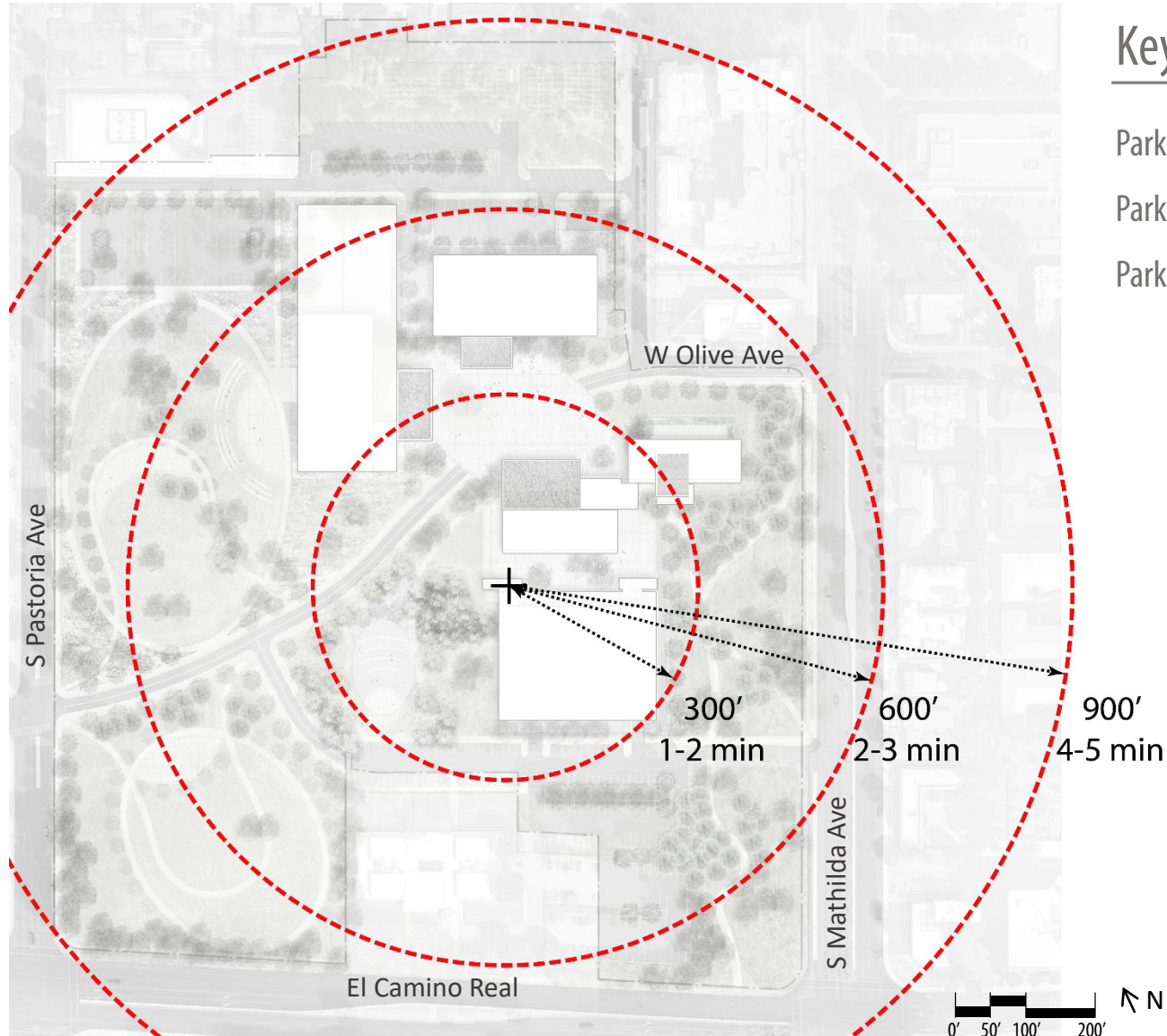


## Key

- Drop Off
- ➔ Entry
- Walking Trail
- Secure Access
- Vehicle
- Service
- Bike
- Bike Parking



# Option 1: Walkability



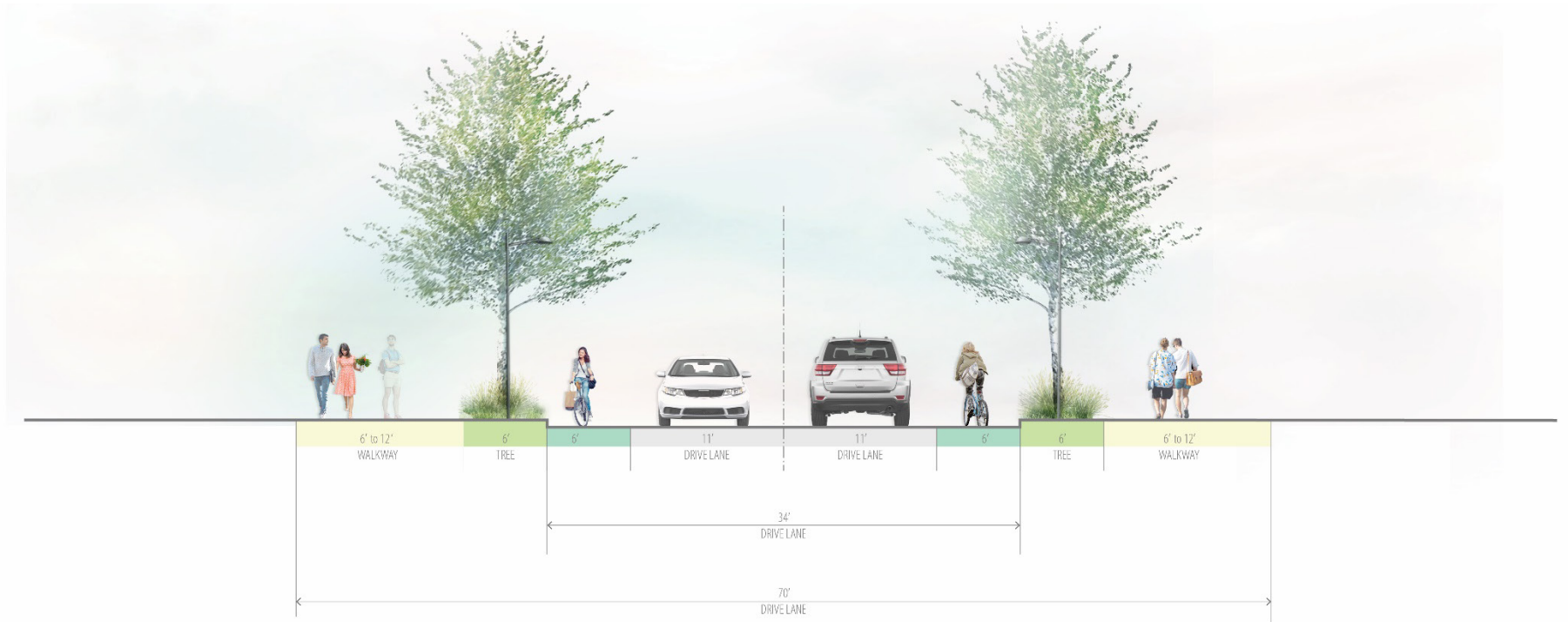
## Key

Parking deck to City Hall = 1 minute

Parking deck to Library = 2 minutes

Parking deck to DPS = 2 minutes

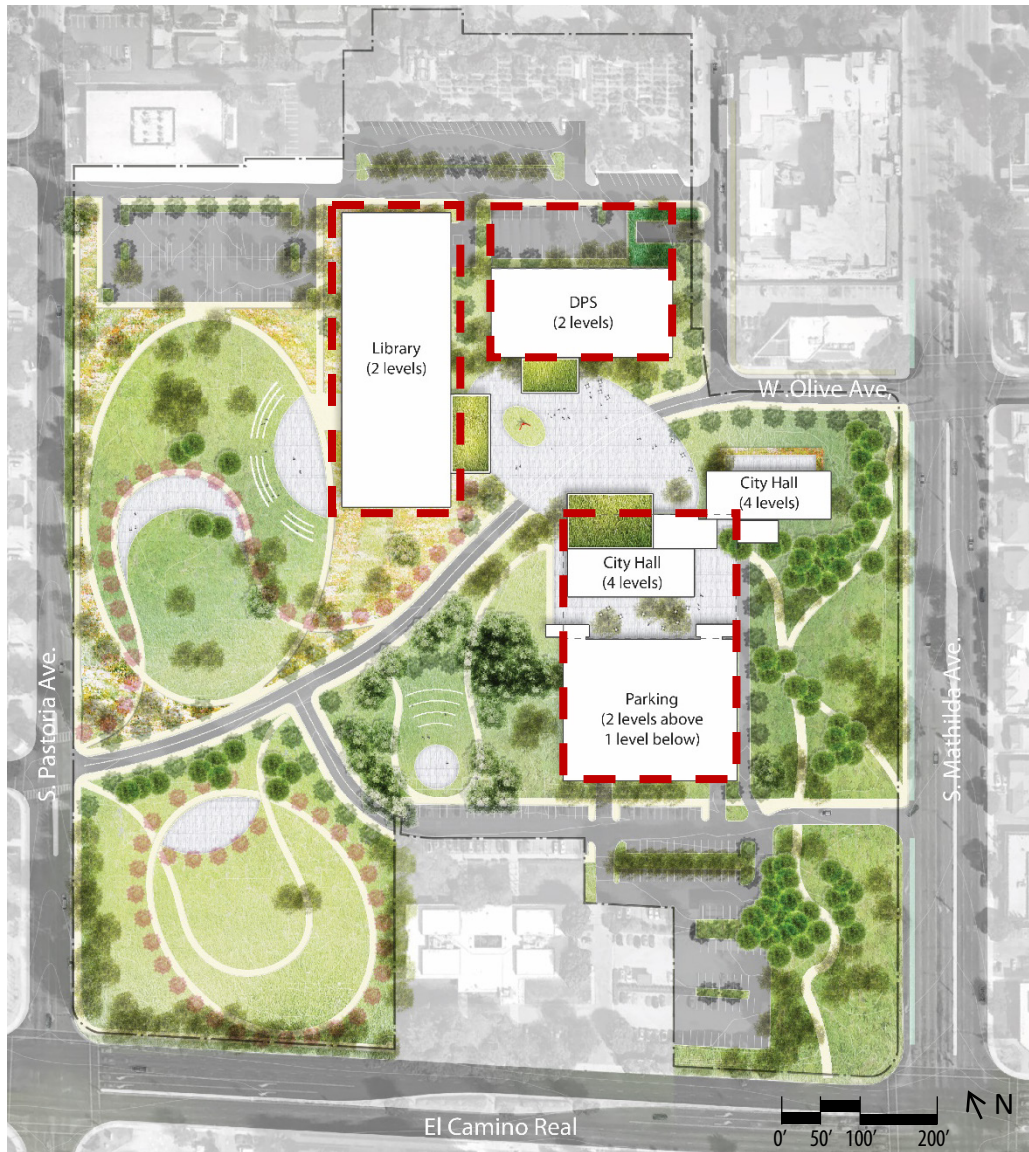
# Option 1: Site Section



# Option 1: Master Plan



# Option 1: Underground Parking



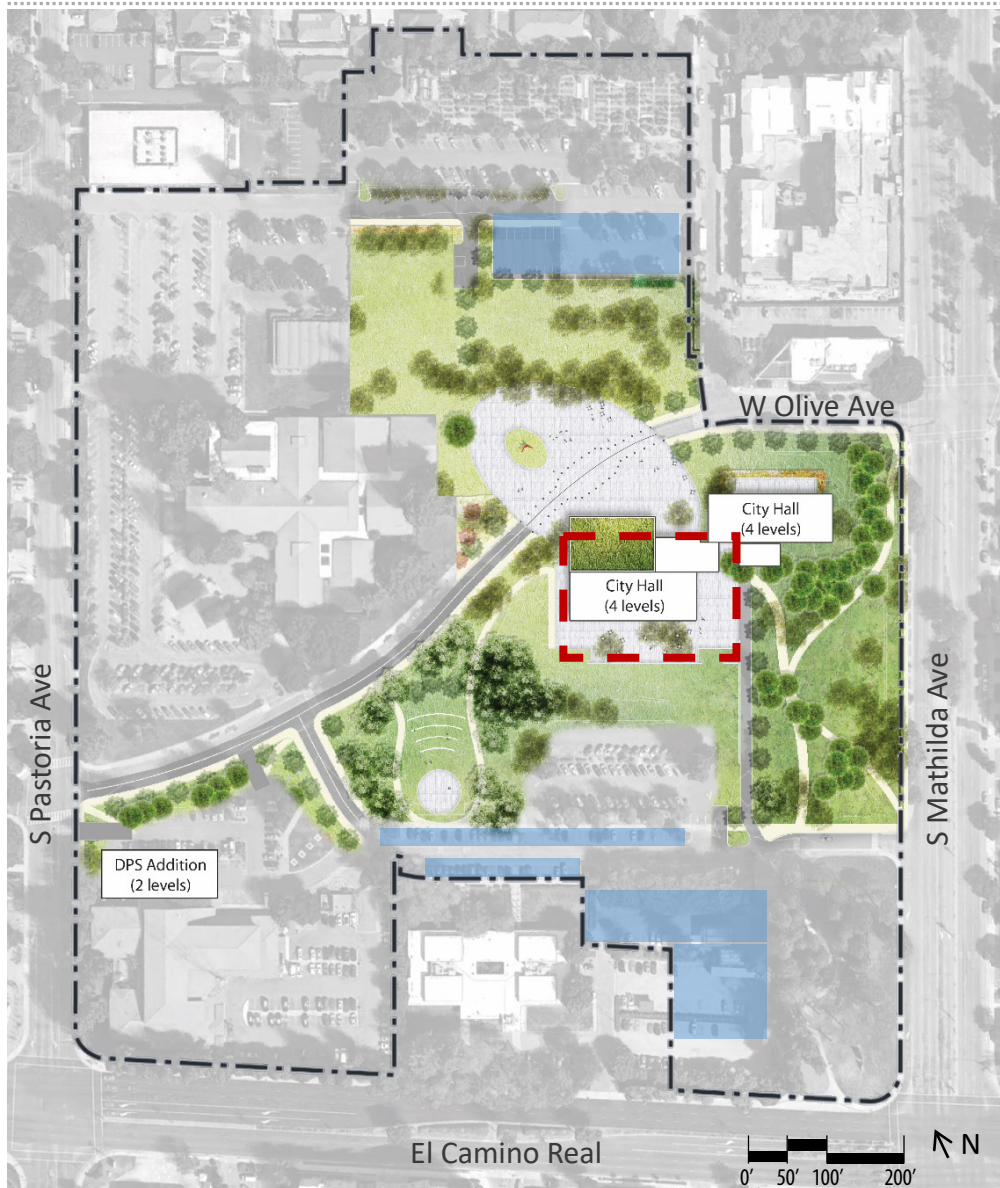
# Option 1: Conceptual Aerial View



# Option 1: Phase 1



# Option 1: Phase 1 Underground Parking



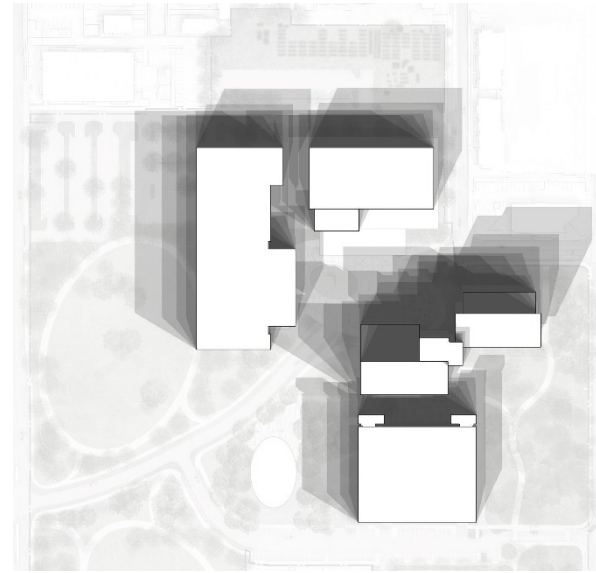
# Option 1: Phase 1 Conceptual Aerial



# Option 1: Shadow Analysis



**SUMMER**



**WINTER**

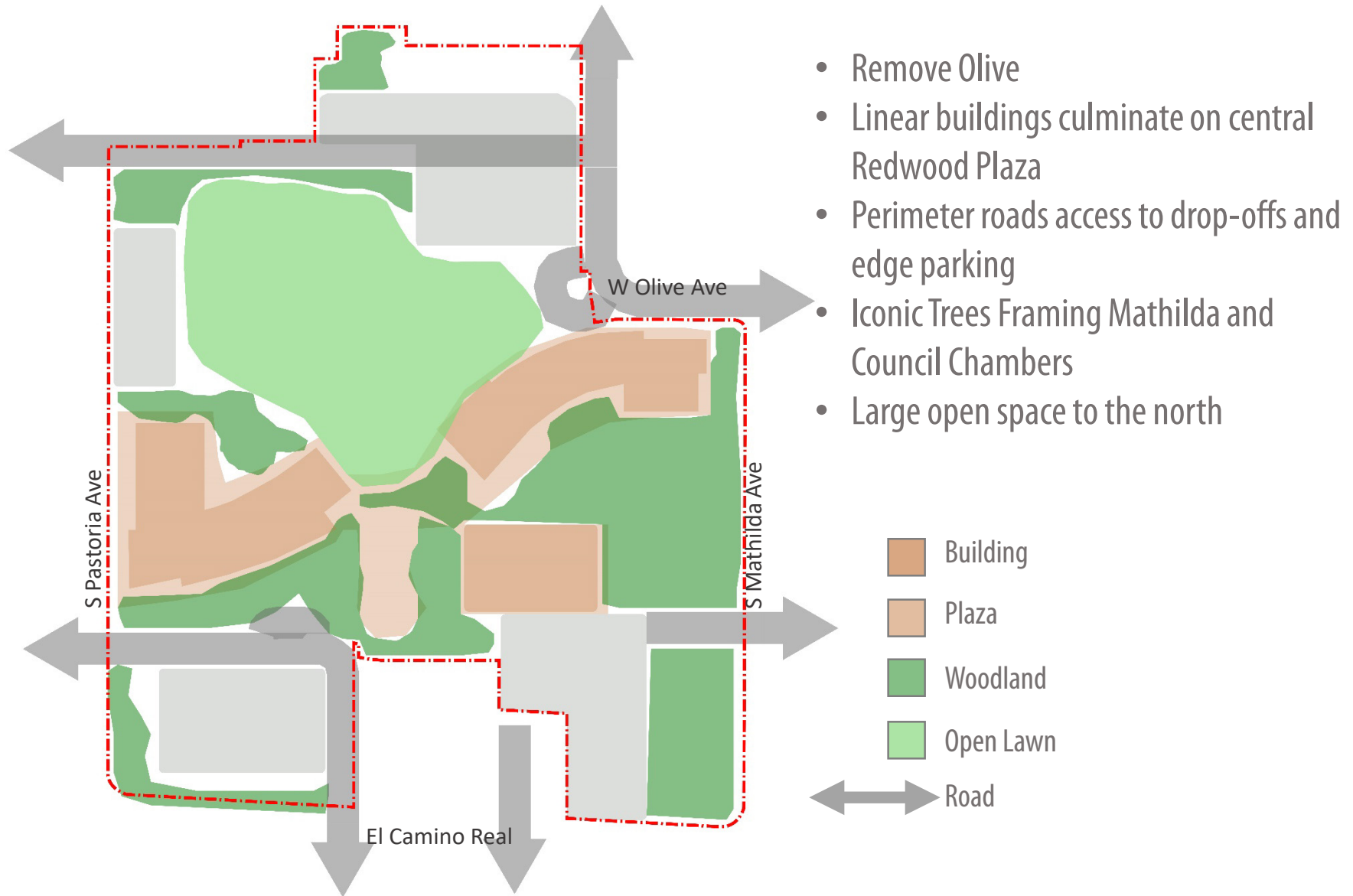


**SPRING**



**FALL**

# Option 2: Linear Buildings + Large Open Space



# Option 2: Master Plan



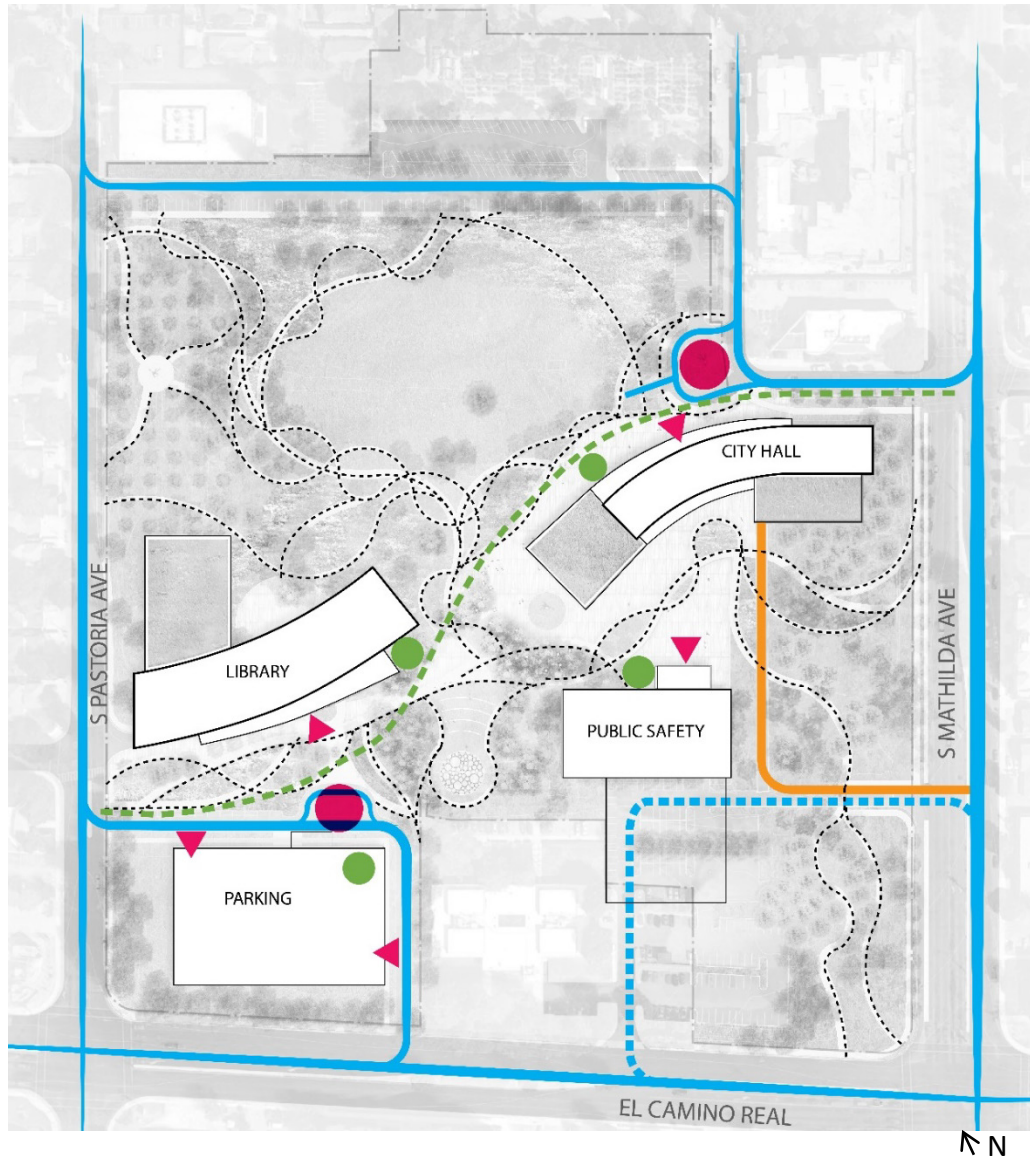
## Proposed Areas

Building Footprints:	17%
Asphalt:	13%
Open Space:	70%

## Existing Areas

Building Footprints:	16%
Asphalt:	40%
Open Space:	44%

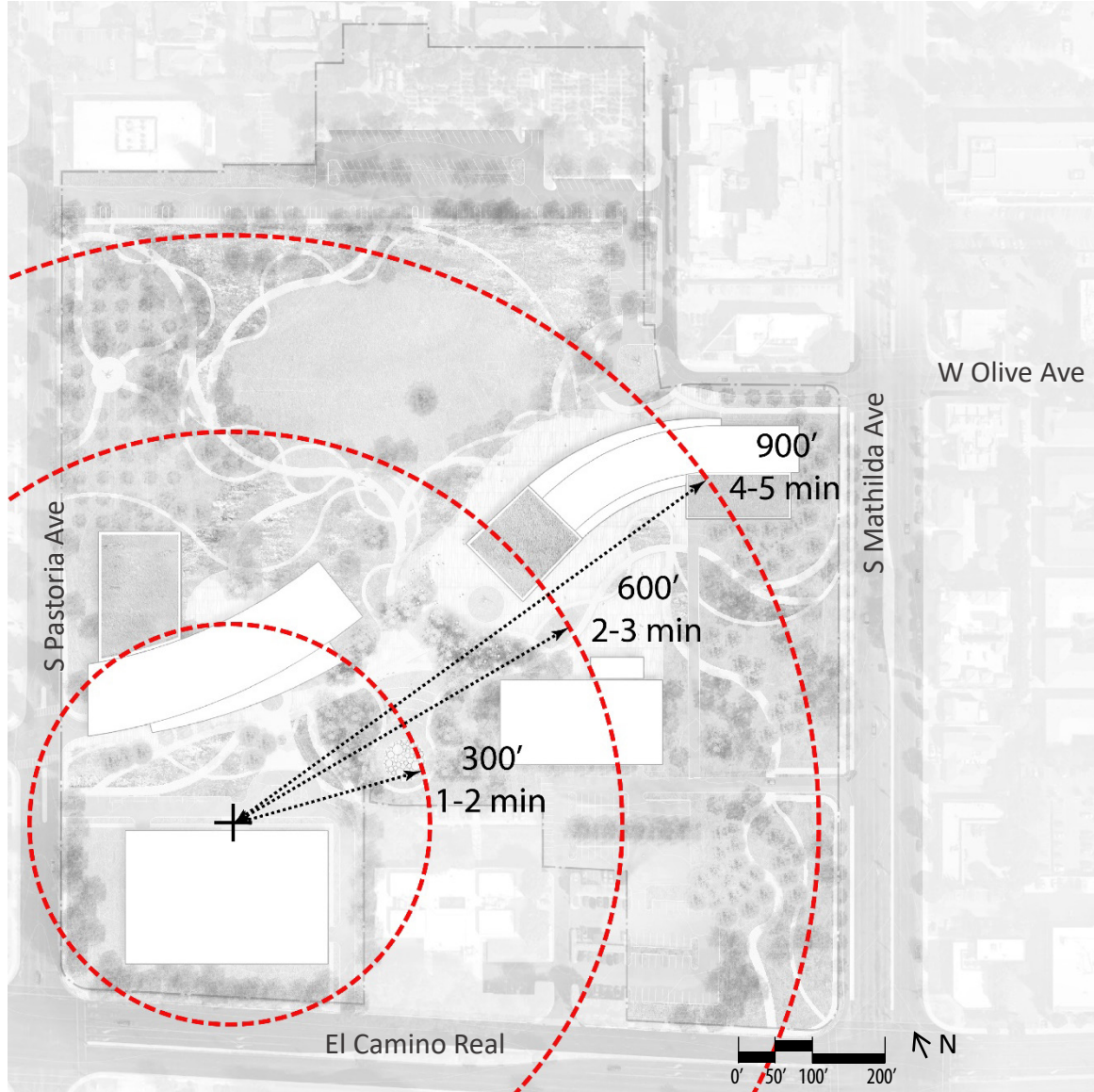
# Option 2: Site Circulation



## Key

- Drop Off
- ➔ Entry
- Walking Trail
- Vehicle
- Secure Access
- Service
- Bike
- Bike Parking

# Option 2: Walkability



## Key

Parking deck to City Hall = 5 minutes

Parking deck to Library = 1 minute

Parking deck to DPS = 3 minutes

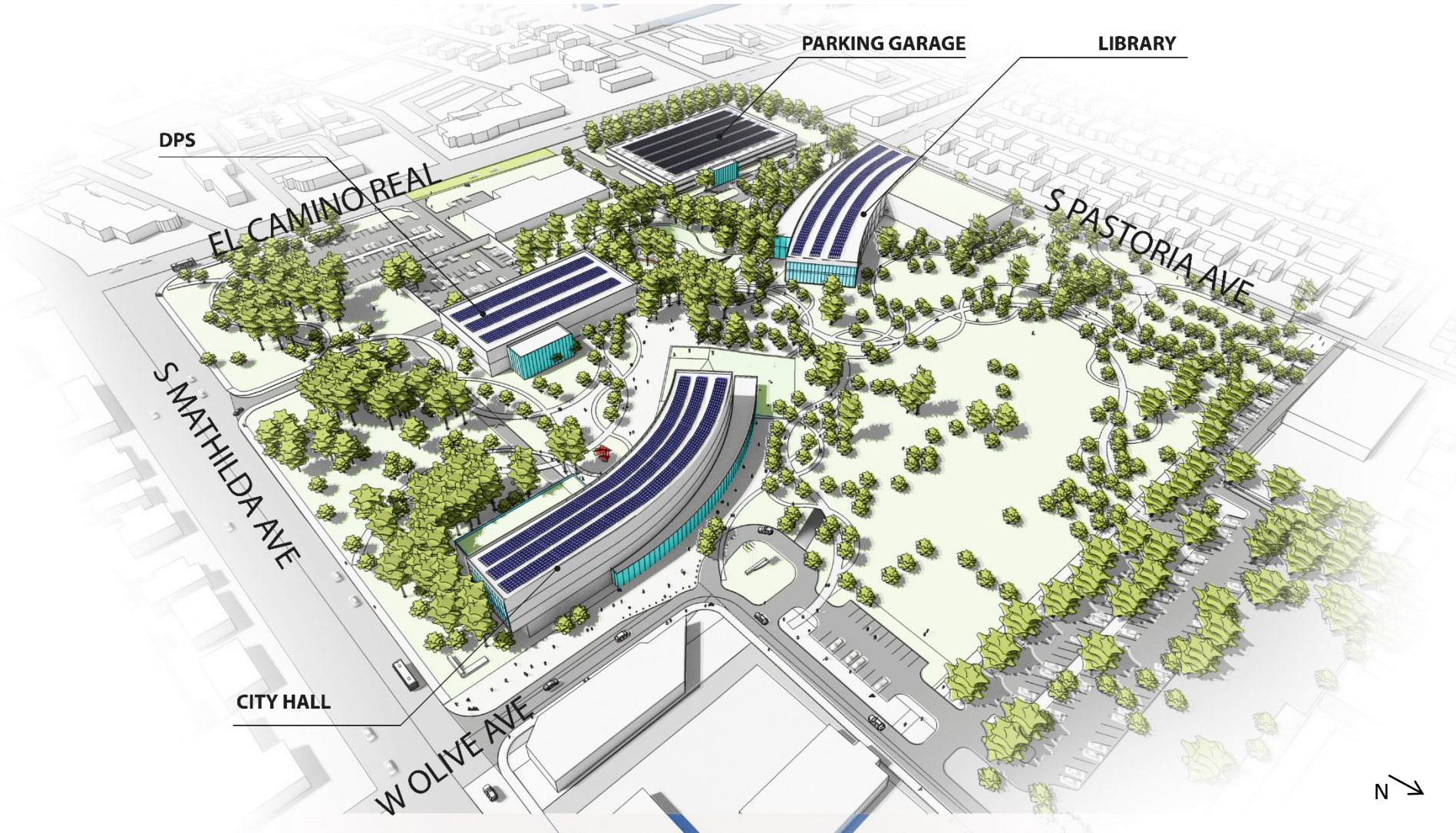
# Option 2: Master Plan



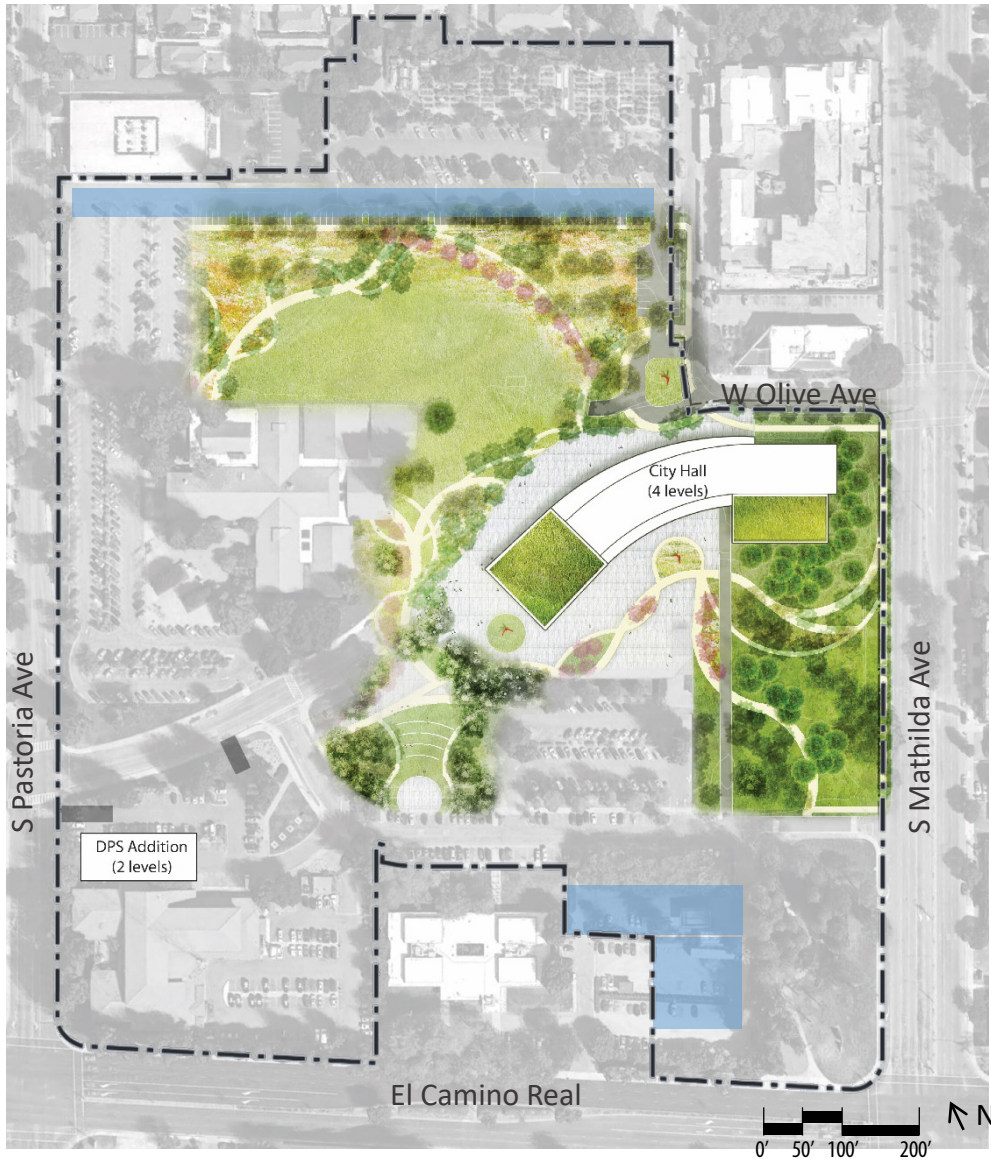
# Option 2: Underground Parking



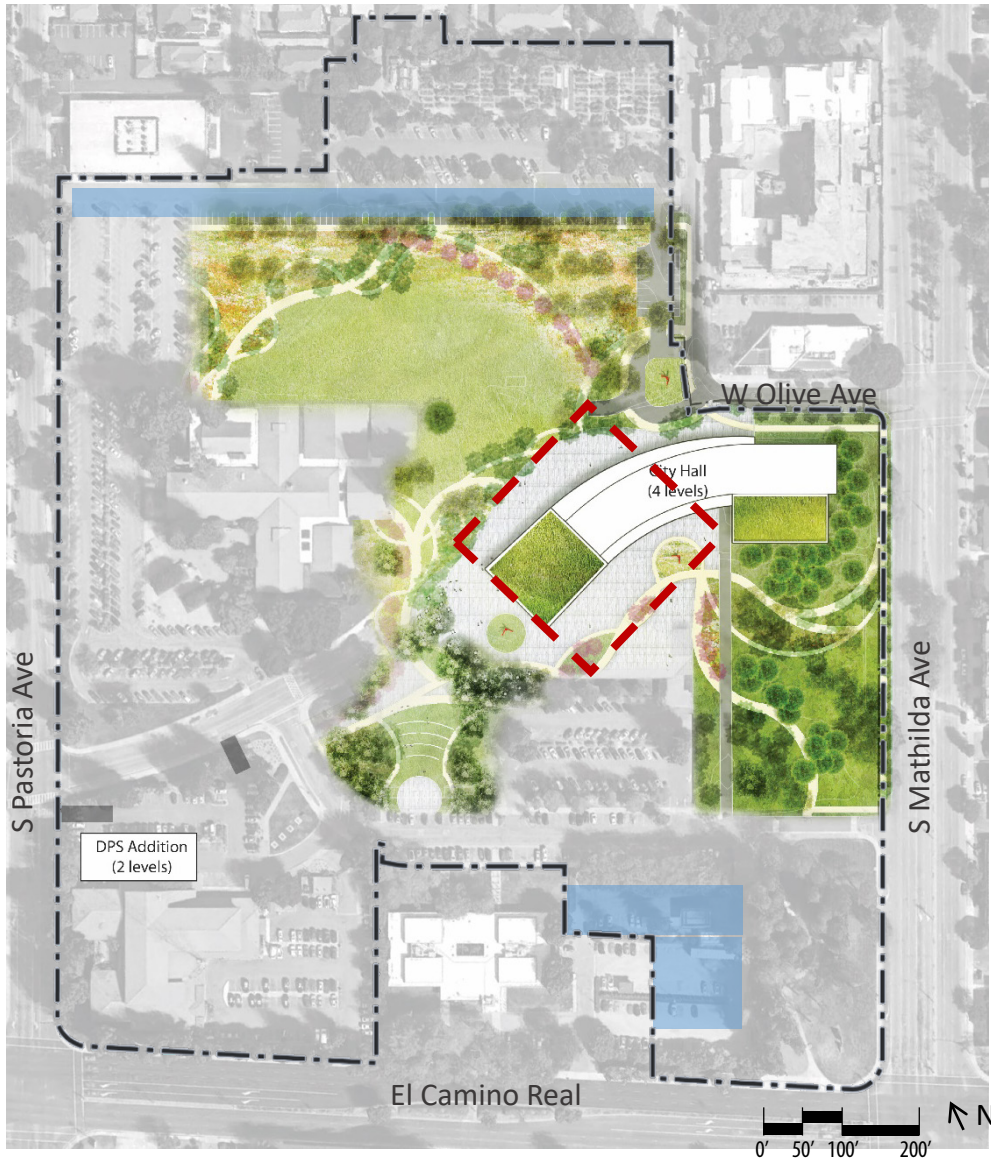
# Option 2: Conceptual Aerial View



# Option 2: Phase 1



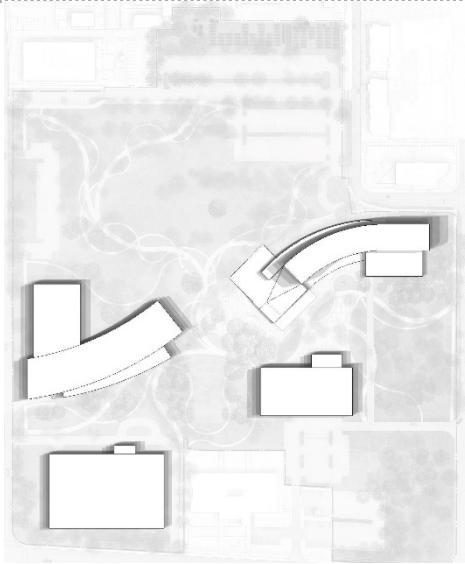
# Option 2: Phase 1 Underground Parking



# Option 2: Phase 1 Conceptual Aerial



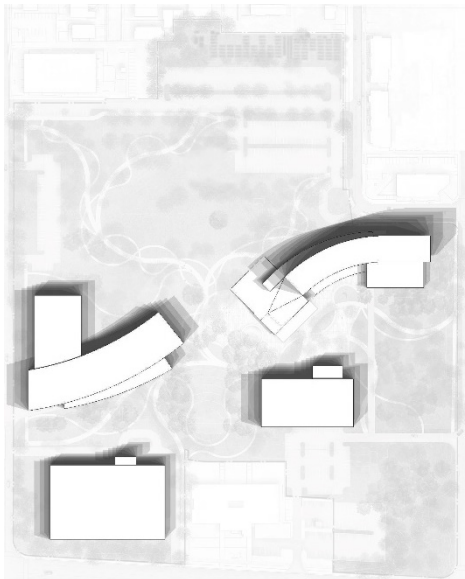
# Option 2: Shadow Analysis



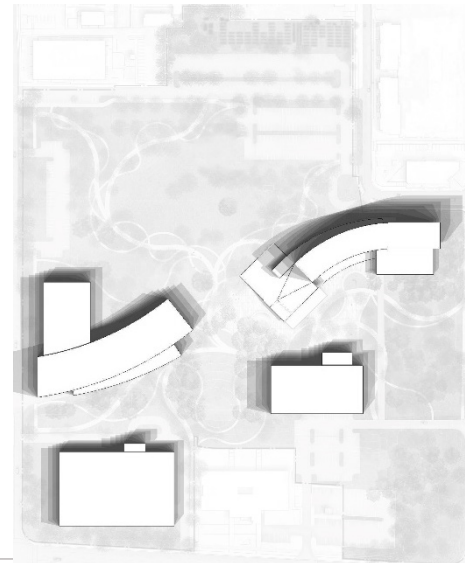
**SUMMER**



**WINTER**



**SPRING**



**FALL**

# 08 NEXT STEPS

# SCHEDULE

## Phase 1 : Assessments (Defining the Problem)

- ✓ Visioning Meeting (6/14)
- ✓ 3 Community Focus Group Meetings (6/14)
- ✓ Report to Project Manager (6/28)
- ✓ Core Team Meeting (7/3)
- ✓ Sustainability Commission Meeting (6/19)
- ✓ City Council Meeting Decision (7/25)
- ✓ State of the City Address (7/29)

## Phase 2 : Alternatives Development

- ✓ Core Team Meeting (9/5)
- ✓ City Council Study Session (9/12)
- ✓ Parks + Rec Meeting (9/13)
- ✓ **Arts Commission Meeting (9/20)**
- Core Team Meeting (10/2)
- Board of Library Trustees Meeting (10/2)
- ★ **Community Meeting (10/12)**
- **Feedback on 2 Alternatives**
- Bike + Pedestrian Meeting (10/19)
- Planning Commission Meeting (10/23)
- Core Team Meeting (10/31)
- ★ **City Council Meeting (11/7)**

## Phase 3 : Preferred Alternate Development

- Sustainability Commission Meeting (12/18)
- Core Team Meeting – Review Draft EIR (1/16/18\*)
- Release of the Draft EIR (3/2/18\*)
- Public Review Period Ends (4/16/18\*)
- Team Publishes Final EIR (8/3/18\*)
- Planning Commission Meeting–certifies EIR (8/21/18\*)
- **City Council Meeting on Final Master Plan (9/18/18\*)**

*\*2018 Dates are tentative*

# Two Options

## Option 1



## Option 2

