

OUTREACH & COMMISSION MEETING COMMENTS

June – November 2017
Sunnyvale Civic Center Modernization Master Plan

FOCUS GROUPS

June 14, 2017 | 3:30-7:30pm
NOVA Conference Room, Sunnyvale Office Center

- KEEPING COMMUNITY GARDENS
- NOT SELLING ANY LAND
- NEED NEW UPGRADES TO LIBRARY. > WHY IS THE MP PHASED LIKE IT IS?
- TIMELINE AFTER PHASE 1?

Q1 ^(A) THINK 22ND CENTURY -

- FORESIGHT
- SERVES
- RETAINS TREES
- PRIDE
- SPECTACULAR
- ICONIC - VISITORS

ART, OPERA, SPORTS, ETC.
LEAVE SUNNYVALE TO GO TO

(B) ~~DISAGREE~~! IT'S BEAUTIFUL.

- AGREE ON 22ND CENT.
- HP BLDG (USED PLAT.)
- MOST PEOPLE DON'T NEED TO GO TO CITY HALL

3:30 - 4:30

① F1

- NTHU ONLY CITY HALL USED PLAT.
 - MIN ALL OTHERS GOLD + CAMPUS
- BE BOLDER IN SUSTAINABLE GOALS
- FACT OF SUNNYVALE - ON MATHILDA/B.C.
 - NO BOXES...
- BUILD FOR FUTURE + GROWTH
- BE PROUD
- COHESIVE
- VISIBLE → ONLY DRIVE
- PROGRAMS ON CAMPUS FOR "CONNECTION"
- LANDMARK / ICONIC BLDG - REPRESENTATIVE OF SUNNYVALE - MORE THAN 2 STORIES
 - MAXIMIZE OPEN SPACE
- SAFETY

- WHERE IS THE GATEWAY - ?
OPEN SPACE VS. BLDG ICON
ON MATILWA OR EL CAMINO REAL?
 - NEED TO FUNCTION IN CITY HALL, NEED A GOOD
BACK BONE.
 - WHY SO MANY PARKING SPACES?
 - DON'T NEED THE PARKING!
 - UNDERGROUND TOO \$?
 - STRUCTURED PARKING?
UGLY?
 - NEED PARKING!
 - AUTONOMOUS CARS? 50+ YEARS
 - STRUCTURES, ETC. > FLEXIBLE IN FUTURE
-
- COLLABORATION NOT JUST LIBRARY.

⌘ WAY FINDING / COMMUNICATION

- DIVERSITY / MULTI-LANGUAGE
- CLEAR & UNDERSTOOD BY ALL

⌘ PROGRAMMED SPACES

- LARGE ENOUGH FOR "ATTRACTIVE" ACTIVITIES

- Make it transparent
- access on website
- no jargon
- iconic!
- preserve trees
- sunnyvale is boring... where take visitors??
- beautiful place ... wonderful campus
 - easy access for building permits
- no high rise / no all glass
- hp building in los attor
- not important to residents?
- preserve trees

- be bolder from sustainability
- entire campus. not sunnyvale
- be creative. no box buildings
- build for future. build for growth
- civic center is main structure of our city
- be proud of our city center - "HEART OF THE CITY"
- cohesive.
 - library is part of it
- connected
- anchor - open space
 - flexible
 - different ethnicities
- be visible - drive
- technology - get information

- we need a landmark building - taller than 2 stories
 - minimize footprint / maximize open space

• ~~add~~ safety

- need gov. inst during disaster
- single space
- micro grid / command ctr.
- refuge
- backbone of city
 - day to day - what makes a city work
 - residents come during problem
- el camino - know what is here
- absolutely need a new city hall
 - like phase part b/c
 - city hall most important - backbone first
- quiet, secluded, nice
- why planning so many parking spaces??
 - we need less

- collaboration space integrated. not just library
- if \$ is an issue - other creative ideas
 - benefit from tech growth?
- diversity! — different languages
- communication
 - case of way finding
 - collaboration
- reservable rooms / open space
- corner of mat'l. l da + el cdmho
 - no more than 4 stories !!!
- energy efficient - solar panels
- get off nat gas
- beautiful but useless..
 - no draw
- revenue sources for courts
 - we may be able to lease or sell.

- 'HEART'
- OWNERSHIP FOR ALL
- DIVERSITY
- INNOVATIVE 'CUTTING EDGE'
- TECHNOLOGY IMPROVEMENTS COULD
KEEP COMMUNITY INFORMED
- WELCOMING CENTER SENSE OF
BELONGING
- PLACE PEOPLE WANT TO GO
- NOT JUST BUSINESS - ARTS / REL
ACTIVITY
- SHARE IDEAS + LEARN GATHERING

- DESIGN SHOULD EXPRESS INNOVATION
PUSH SUSTAINABILITY BIO
- INFORMATION ACCESSABILITY - PHYSICAL PRESENCE
- MAINTAIN COMMUNITY GARDEN
- OPEN SPACE - STATE OF THE CITY / FAIRS
/ EVENTS "DEFINED SPACE"
- UNDERGROUND PARKING
- COMFORTABLE WARM SPACES
- FOOD EVERYWHERE
- MORE DENSITY IN FAVOR OF
OPEN SPACE

• SHARED PARKING MODELS

* INCORP. WALKING & BIKING ^{BRINGS PURPOSE}

• LIBRARY - INCUBATE, CULTURE OF LEARNING

SPECIAL PLACE

FIRE PLACE
HEARTH

KID FRIENDLY

AFTER SCHOOL USE

WELCOMING

MAINTAIN SEPERATION FROM
CITY HALL

• DEMOCRACY OPEN WELCOMING

• MODEST, POLITE, UNPRETENSIOUS ATTITUDE
OF SUNNYVALE (CULTURE) SMALL TOWN FEEL

• MULTI-PURPOSE SPACE

• PUBLIC ART

- HEART OF CITY
- DIVERSITY OF PEOPLE — FOR EVERYONE
- CUTTING EDGE / INNOVATIVE
 - EARTHQUAKE PROOF
- BEST USE OF TECHNOLOGY
 - FOR WAY FINDING / COMMUNICATION
 - LIBRARY —
 - ON-LINE — REFRESH WEB?
 - CITY COUNCIL > KEEP RESIDENTS INFORMED
- WELCOMING SPACE
 - BELONG TO ALL & FEEL GOOD ABOUT IT
 - ENGAGE RESIDENTS
- AREAS FOR ARTS + CREATIVITY

(Q1)

- SENSE OF BELONGING
- COMMUNITY CENTER = ARTS / RELAX
- CIVIC CENTER = BUSINESS
 - MORE . ON . LINE IN FUTURE → LESS NEED TO COME TO CITY HALL, ETC.
- SHARE IDEAS + LEARN } GATHERING TOGETHER
 - CIVIC / POLITICAL /
 - EXCHANGE
- INNOVATION → CAMPUS SHOULD EMBODY
 - WASTE / ENERGY / WATER / BIOFILIA
 - REPRESENT THE VALLEY
- INFO CENTER @ LIBRARY ? / CAMPU S.
 - ↳ ON CITY : · WHEN PUBLIC MTGS, OPENINGS, VIDEOS
 - PRESENTATIONS (PHYSICALLY AVAILABLE)
 - MAP OF CITY → PARKS ART, GARDENS,

② F2

- STATE OF UNION / CITY; COMMUNITY AFFAIRS
- DEFINED SPACES & COMMUNICATIVE
- UNDERGROUND / ABOVE GROUND OPTIONS FOR PROGRAM
- VALUE THE OPEN SPACE
 - ARE WE OLD-FASHIONED? 2ND RATE CAR LOT?
 - NEED COMFORTABLE SPACES
- NO CONFLICT W/ PED VS. CARS
- MINIMIZE CAR
- F+B! EVERYWHERE
 - ACTIVATE SPACE
 - OUTDOOR FURNISHINGS
 - GATHERING = TOGETHER
- MINIMIZE FLOOR PLATE & GO UP! VALUE OPEN SPACE & HAVE MORE.

③

F₂

- AS MUCH OPEN SPACE AS POSS.
- BROAD VISION! 50+ YEARS
 - INCORPORATE: BIKE / PED > PART OF EXPERIENCE OF LIVING IN SUNNYVALE
- LIBRARY - FUN! CITY HALL - LIKELY NOT!
 - INTELLECTUAL > ASPECT OF FACILITIES / PLACE / PEOPLE / STAFF
 - KID FRIENDLY - LOTS OF SEATING; TUTORING → PRIVATE SPACES TOO
 - PRACTICE LANGUAGE
- CITY BUDOS ARE MODEST
- ♥ LIBRARY
- CITY HALL NEEDS TO BE WELCOMING!
 - DISTINCTION BTWN THE 2.
- COMMUNITY GATHERING PLACE -
 - LIKE / THEIRS / VOKE / TOGETHER / DEMOCRACY
 - OPENNESS / PARTICIPATORY / BIKE / PED
- COMMAND CENTER FOR EMERGENCIES ①

- AMPHITHEATER
 - PERFORMANCE / LEARNING
 - OUTDOOR SPACE
 - MULTI-PURPOSE
- ART IN THE LANDSCAPE
 - INTEGRATING FORM + FUNCTION
 - UNPRETENTIOUS
 - NOT 'PLOP' ART
- CURTINA LIBRARY → WATER ART

- TREE PRESERVATION
- OLIVE CLOSURE?
- NOT TRENDY — LONG LASTING
- MP THAT LOOKS FORWARD
- KEEP IT GREEN
- GARDEN IS STAYING
- LIBRARY — BEAUTIFULL & FUNCTIONAL / USEFUL

(Q1)

- REFLECTIVE OF SUNNYVALE
 - NOT GLASS + STEEL ; NOT BOLD + BRASSY
 - WARM & GENTLE
 - PEOPLE / RESIDENT ORIENTED
- INNOVATION — FORWARD LOOKING

- MEET THE NEEDS OF THE PEOPLE
- EFFICIENT
- LOOK NICE
- MULTI-FUNCTIONAL BLDG? WHY ALL SPREAD OUT?
— MORE OPEN SPACE

- SUSTAINABILITY —
 - URBAN HEAT ISLAND EFFECT
 - COOLING SYSTEMS ARCH & LANDSCAPE

- HOW ENGAGE W/CITY COUNCIL?
 - IN-PERSON / ON-LINE / TECH / TIMING, ETC.
 - MORE COMMUNITY / PEOPLE-FRIENDLY

- INFRASTRUCTURE:
 - ROADS / PARKING > TRAFFIC ANALYSIS

- NOVA / LIBRARY > OPEN SPACE > NEED FURNISHINGS + GATHERING SPACE

- CORP YARD ~> PUSH PROGRAM TO THERE?

- FUTURE TECH - ON-LINE, FREETIME, WEBEX
- AUTONOMOUS CARS > PARKING?
- HOW WILL PROJECT INFLUENCE URBAN DESIGN FRAMEWORK / PERMEATE INTO SURROUNDING COMMUNITY
- SHARED + FLEXIBLE MULTI-MODAL *
- MORE "COMMUNITY" FACE TO FACE IS NEEDED.
 - HELPS TO BREAK DOWN BARRIERS
 - LEARN FROM ONE ANOTHER
- PROGRAMMED AREAS (INTERIOR) AFTER 5 pm
- TRAFFIC STUDY - W/IN PL & INTERSECTIONS NEARBY / ADJACENT
- DENSITY / LOCATION OF NEW BUDGS - BE COGNIZANT OF NEIGHBORS / BUFFER

①

- WELLNESS SUSTAINABLE
- LIKE TREES
- RESIDENT ROOM ADJACENT TO COUNCIL CHAMBERS
- DIFFICULT TO NAVIGATE A MASS PARKING & BUILDINGS CIRCULATION
- NO PLACE TO SIT
- INNOVATE SERVICES
- HOW DOES SITE CONNECT TO NEIGHBORHOODS? SENSITIVE PASTORAL
- FACE TO FACE, COMMUNITY, BREAK DOWN BARRIERS
- BIKE WALK
- WAY FINDING

- COMMUNITY GARDEN !!!
 - NOT TRENDY LONG LASTING
 - USEFUL - MULTI. USE
-

①. REFLECTIVE OF THE GREEN AREAS

- WARM WELCOMING FRIENDLY
- RESIDENT PEOPLE ORIENTED
- INNOVATION FWD THINKING
- EFFICIENT
- WHY ARE FUNCTIONS SEPERATE
- MORE GREEN SPACE

STATE OF THE CITY ADDRESS

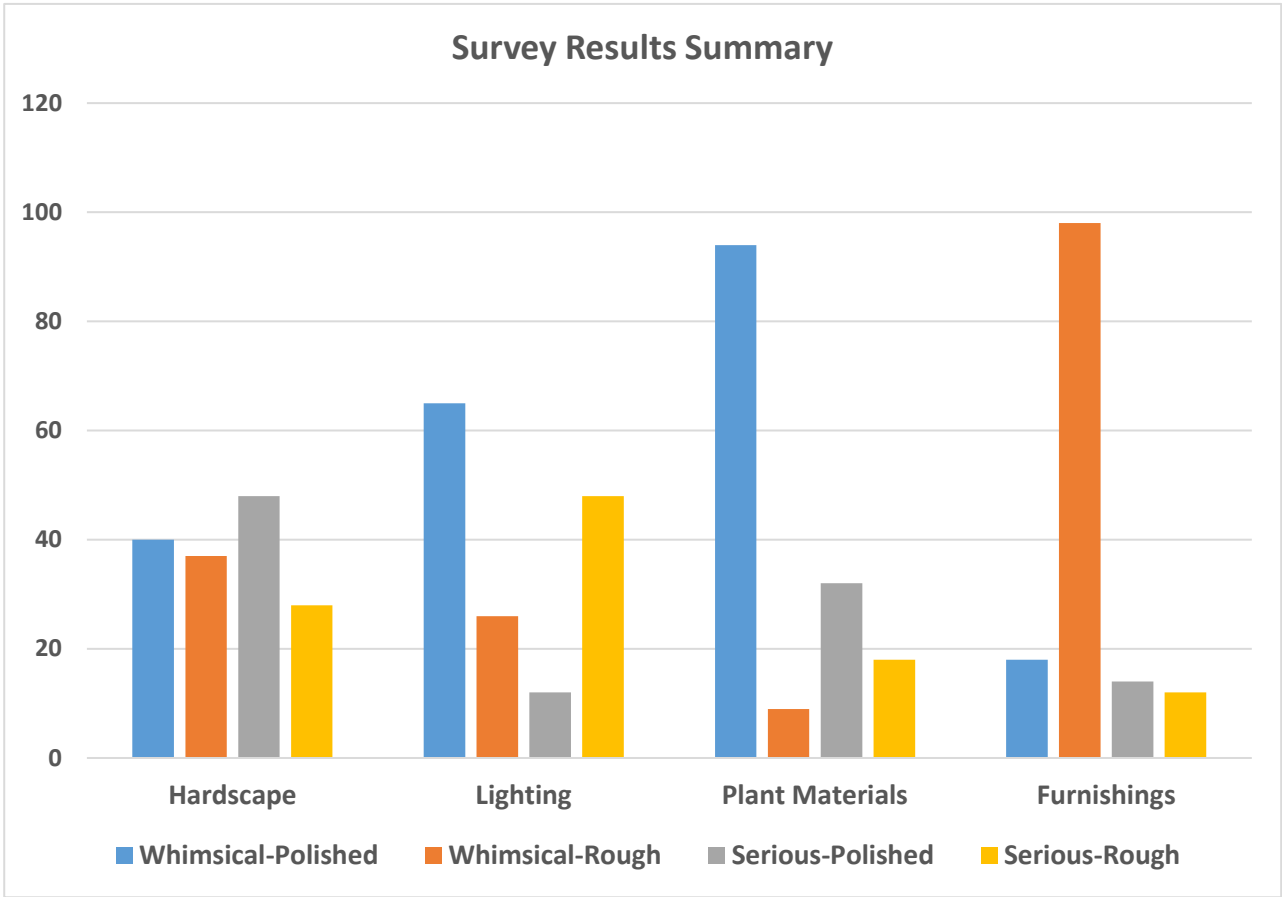
July 29, 2017 | 11:00am-3:00pm

Sunnyvale Civic Center

	Hardscape	Lighting	Plant Materials	Furnishings
Whimsical-Polished	40	65	94	18
Whimsical-Rough	37	26	9	98
Serious-Polished	48	12	32	14
Serious-Rough	28	48	18	12
Whimsical	2	2	0	2
Serious	0	0	1	0
Polished	1	1	0	0
Rough	<u>1</u>	<u>1</u>	<u>7</u>	<u>0</u>
Total Votes Cast	157	155	161	144

Demographic Data

Age Group	Men	Men %	Women	Women %
0 - 20	6	8%	12	15%
21 - 30	7	9%	6	8%
31 - 40	15	20%	17	21%
41 - 50	12	16%	13	16%
51 - 60	16	22%	14	18%
61 - 70	11	15%	16	20%
71+	7	9%	2	3%
Totals	74	100%	80	100%





plant materials | naturaleza | 植物

whimsical | comico | 活泼的



rough | aspero | 原生态的



polished | liso | 精雕细琢的

serious | serio | 正式的

SMITHGROUP | SUNNYVALE CIVIC CENTER MODERNIZATION PROJECT MASTER PLAN



hardscape | superficie | 硬质景观

whimsical | comico | 活泼的



rough | aspero | 原生态的



polished | liso | 精雕细琢的

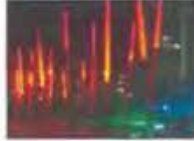
serious | serio | 正式的

SMITHGROUP | SUNNYVALE CIVIC CENTER MODERNIZATION PROJECT MASTER PLAN



lighting | iluminacion | 照明

whimsical | comico | 活泼的



rough | aspero | 原生态的



polished | liso | 精雕细琢的



serious | serio | 正式的



SMITHGROUP

Sunyue Civic Center Modernization Project Master Plan



furnishings | muebles | 家具

whimsical | comico | 活泼的



rough | aspero | 原生态的



polished | liso | 精雕细琢的



serious | serio | 正式的



SMITHGROUP

Sunyue Civic Center Modernization Project Master Plan

PARKS & RECREATION COMMISSION

**September 13, 2017 | 7:00-8:00pm
Council Chambers, Sunnyvale City Hall**

- PLANNING FOR FUTURE EXPANSION
+ 20 YEARS AFTER PHASE 2
- SAFETY/SECURITY PROXIMITY OF
PARKING
- GATHERING SPACE - PURPOSEFUL
PLAZA - SENSE OF PLACE
- HOW DOES IT AFFECT ADJ.
LAND USES
- DPS CIRCULATION

9/13
PARKS + REC

9/13 park +
rec

- A "PLACE" TO MEET & GATHER
SOCIAL SPACE, CHARACTER
- "HUMANIZE SUNNYVALE" — ARTWORK
FACE OF SUNNYVALE
- WARMTH → SUNNYVALE (OPT 1)
- OPT 2 — SCHOOL TRAFFIC — CUMBERLAND
↓ MAY BE A NICER
EXPERIENCE

ARTS COMMISSION

September 20, 2017 | 7:00-8:00pm

Sunnyvale Community Center

- CURVE OF BUILDINGS
"ORGANIC"
- OPTION 2 - AMPHITHEATER FOCAL
POINT - LARGE SPACE WITH OPTIONS
BRING MORE COMMUNITY
- DROP OFFS GOOD
- PARKING STRUCTURE = ART
OPPORTUNITY

- ORCHARDS
- ART IN THE AMPHITHEATER
 - PUBLIC PERFORMANCES
 - INCORPORATE STRUCTURE
- OPTION 2 MORE SPACE AROUND THE BUILDINGS
- OPTION 2 ENGAGES COMMUNITY GARDEN
- ART CLOSE TO LIBRARY ENTRY
"INTERACTIVE"

BOARD OF LIBRARY TRUSTEES COMMISSION

October 2, 2017 | 7:00-8:00pm

Library Program Room, Sunnyvale Civic Center

- MOVE LIBRARY TO COMMUNITY CENTER
- DON'T REDUCE PARKING
- WITH NO BKS ON OLIVE = MORE CARS
- PARKING PRIMARY CONCERN
- PARALLEL PARKING + DRIVE + DROP OFF = CONGESTION (OPT 2)
- AGRICULTURE & DIVERSITY IS A PLUS CELEBRATE DIVERSITY

- OPT 2 - INVITING & ACCESSIBLE
- OPT 2 - LIBRARY STAND ALONE
- BUS ACCESS TO LIBRARY?
OPTION 2 IS BETTER
- BUS ACCESS IS HUGE!
- EXPANSION OF CHARLES ST. GARDEN
- SAFE AREAS FOR KIDS TO PLAY
- THINK BROADLY ABOUT SUSTAINABILITY

- OPT 2 ELEGANT &
"FLOW"
- EXPANSION / FUTURE GROWTH
OF CITY HALL
- CONSTRAINED BY TREES -
CONSERVATIVE
- LIBRARY ^{FUTURE} EXPANSION SHOULD BE
CONSIDERED
- "BOLDER"
- ASIAN GARDEN COMMUNITY
SPACE

PUBLIC MEETING

October 12, 2017 | 6:00-9:00pm

Recreation Building Ballroom, Sunnyvale Community Center

o KEEP OLIVE IF POSSIBLE

10.12.17

o ADA COMPLIANCE

Public ^①
Comments

— IF YOU GET RID OF OLIVE

o PARKING UTILIZATION

— HOW DEFINE?

o HOW MUCH OVERLAP FOR ALL SERVICES?

o SHADE/SUN/RAIN CANOPY FOR
WALKING? CONNECT BLDGS.

o MURALS/ART

o BUILD SOMETHING BEAUTIFUL

10.12.17
Public @
community

- * ACCESSIBILITY - TURNING L+R
MATHILDA / AU AMERICA WAY
- * DPS IS FINE → DON'T MAKE A
PARKING STRUCTURE
- * 4 MIN WALK TOO MUCH.
- * KEEP OLIVE → INTEGRATING A
PLAZA SEEMS AWKWARD
- * OLD WORLD ARCHITECTURE —
INSTEAD OF STARKNESS
- * ADD PLAYGROUND TO OPEN SPACE
- * COVERED WALKWAYS

10.12.17

PUBLIC COMMENT ③

- ADA ACCESSIBILITY + KIDS
- PEDESTRIAN FRIENDLY
- CONTIGUOUS OPEN SPACE w/ NO ROAD
- UNDERGROUND PARKING IS GREAT FOR MORE OPEN SPACE
- CITY SHOULDN'T SELL THE OPEN SPACE
- PLAZA BTWN BLDGS. / BUT NO ROAD
- PARKING PROXIMITY
- WHY DPS ADDITION?
- PHASING + TIMING?

10.12.17
PUBLIC &
COMMENT

- OLIVE DOESN'T NEED TO EXIST
- NEED MORE OF PRESENCE ON
MATHILUDA - GATEWAY / SCULPTURE
- PLAZA: COULD AWNINGS / CANOPIES BE
ADDED FOR SHADING
- BIGGER / GRAND / ICONIC
- WATER CATCHMENT / STORM WATER
- MICRO-GRIDS / RESILENCY IMPT.
- HEIGHT / DENSITY
- THINK 22ND CENTURY
- NZE!

- EXIST. LIBRARY IS IMPT. FEATURE, DON'T REMOVE
- OLIVE IMPT → BUS ROUTES
- TIME LINE → NEED TO KNOW
- DPS → WHY AN ADDITION IF REMOVED LATER.
- HOW FUNDED? SHOULD BE CLARIFIED.

◦ PLAYGROUND

TODDLER: GATED

VS.

OLDER KIDS OPEN AREA

- PARKING STRUCTURE TOO FAR AWAY, UNATTRACTIVE
- KEEP PLAZA, DON'T INTEGRATE W/ OLIVE
- "OLD WORLD" ARCHITECTURE
- PLAYGROUND FOR KIDS / LIBRARY USE
- COVERED WALKWAYS
- ACCESSIBLE / PED. FRIENDLY
- MORE PARKING
- TIMELINE?

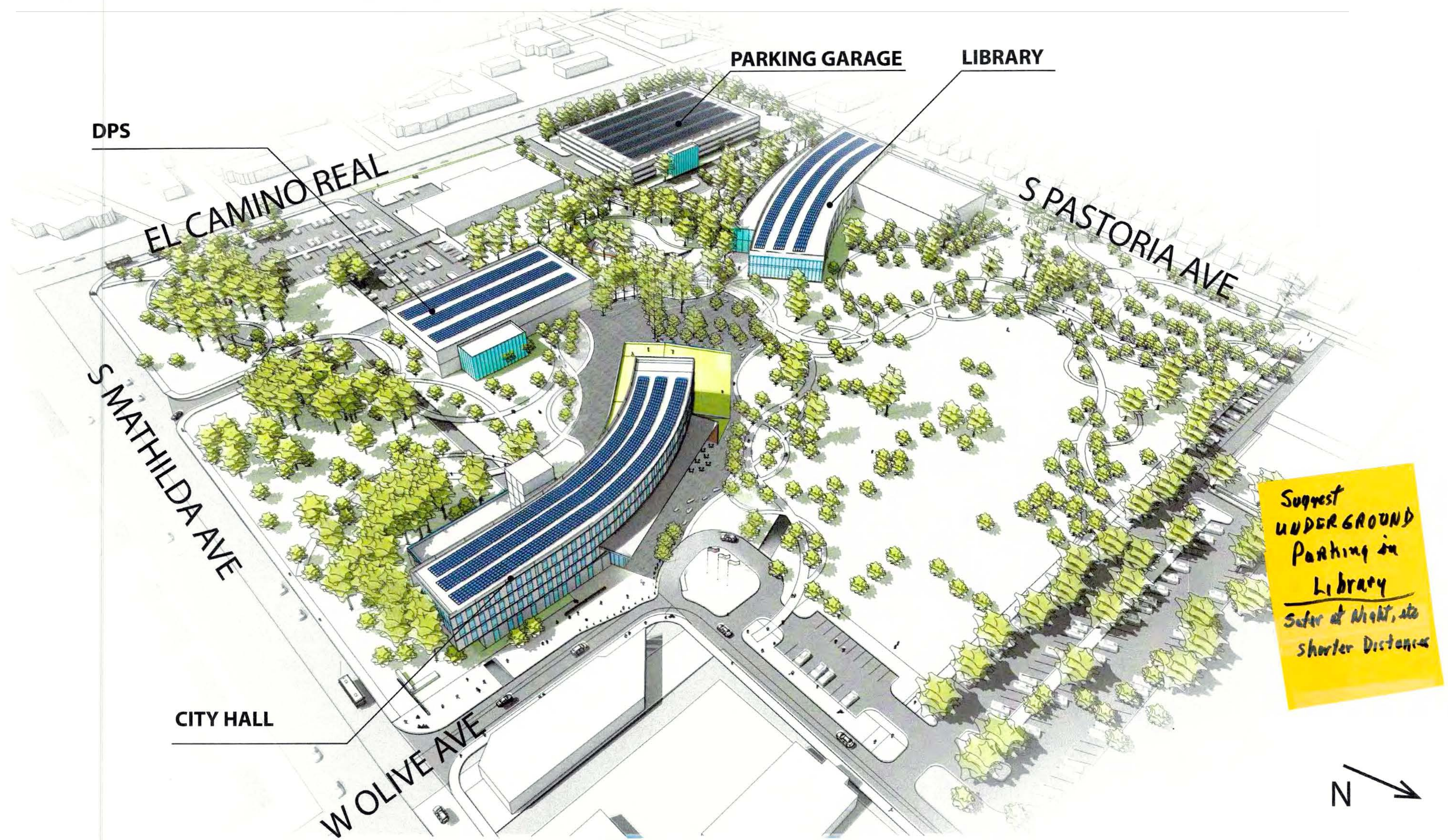
- INCORPORATE CURVED BLDG WITH OLIVE
- ADDRESS ADA CONCERNS W/ REMOVAL OF OLIVE
- OVERLAPPING PARKING?
- PROVIDE ARTFUL CANOPIES TO CONNECT PATHS TO BUILDINGS
- ART MURALS - BEAUTIFUL
- ICONIC

- PARKING ADJACENT TO LIBRARY
- NO OLIVE
- DRIVE THRU DROP OFF @ LIBRARY
- MORE PRESENCE ON MATHILDA
- COVERED PLAZA (FLEXIBLE/USABLE)
- ICONIC / GRAND ENTRY TO CAMPUS
- RESILIENT CITY HALL
- BEAUTY / USEFULNESS / WHAT IF?
- USE BRICKS OF EXISTING BLDG'S
- ZNE / WATER

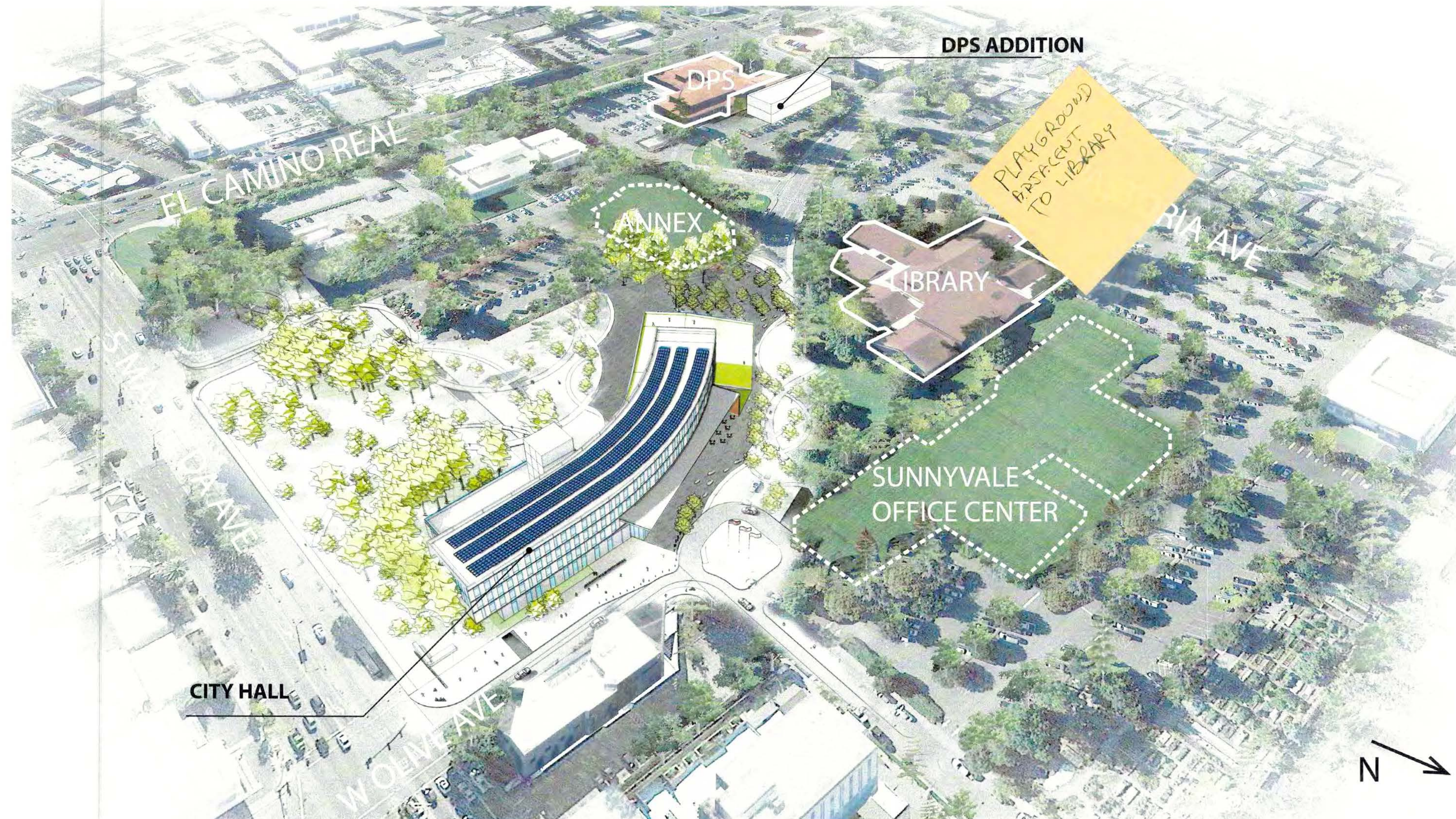
- PRESERVE EXIST LIBRARY
(BRICK BUILDING HISTORIC)
- DO NOT CLOSE OLIVE
- TIME LINE?
- ADDITION TO DPS? ~~###~~ NEW
ADDITION WILL BE DEMOLISHED







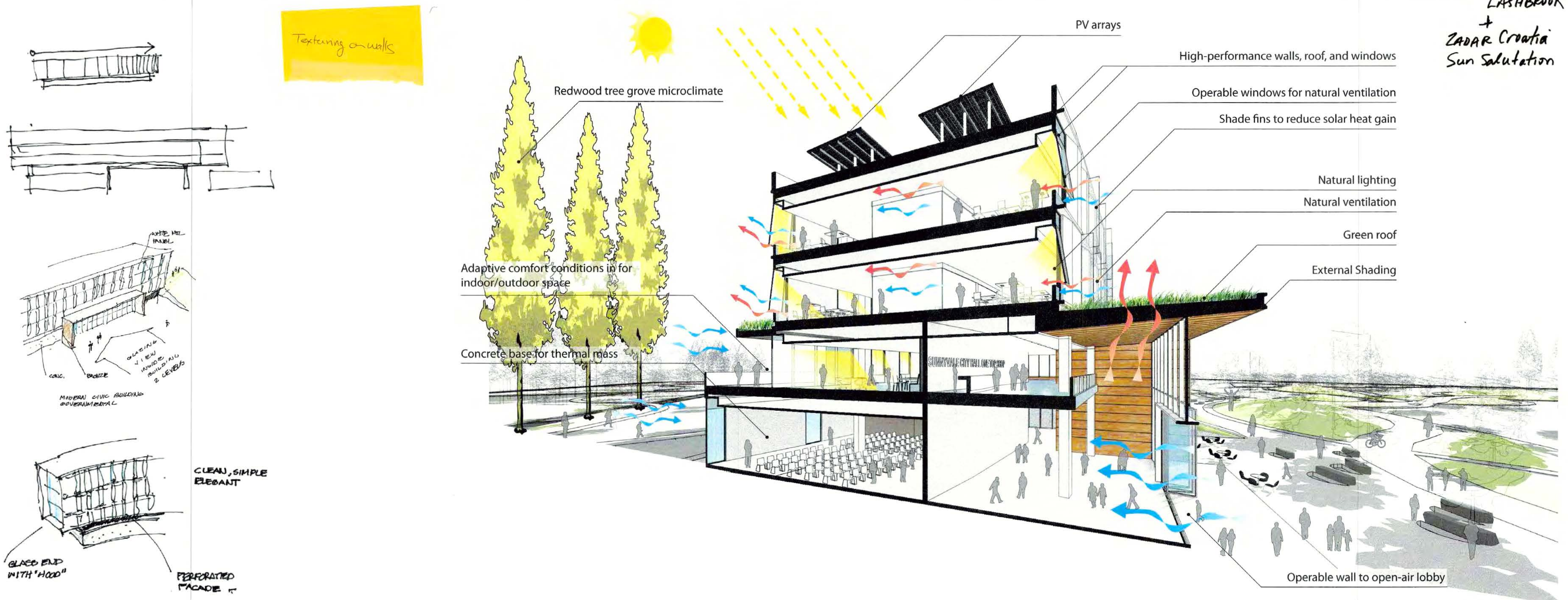
Option 2 : Full Vision

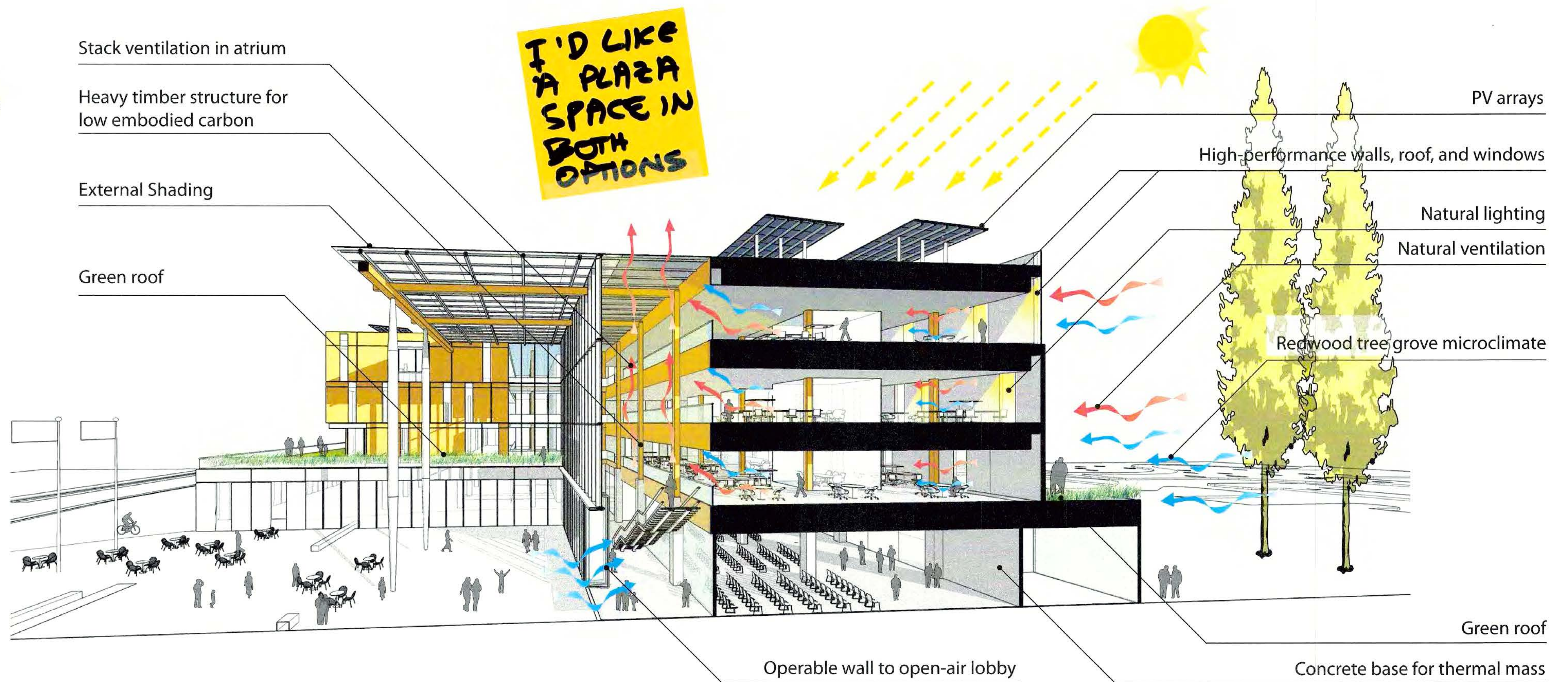
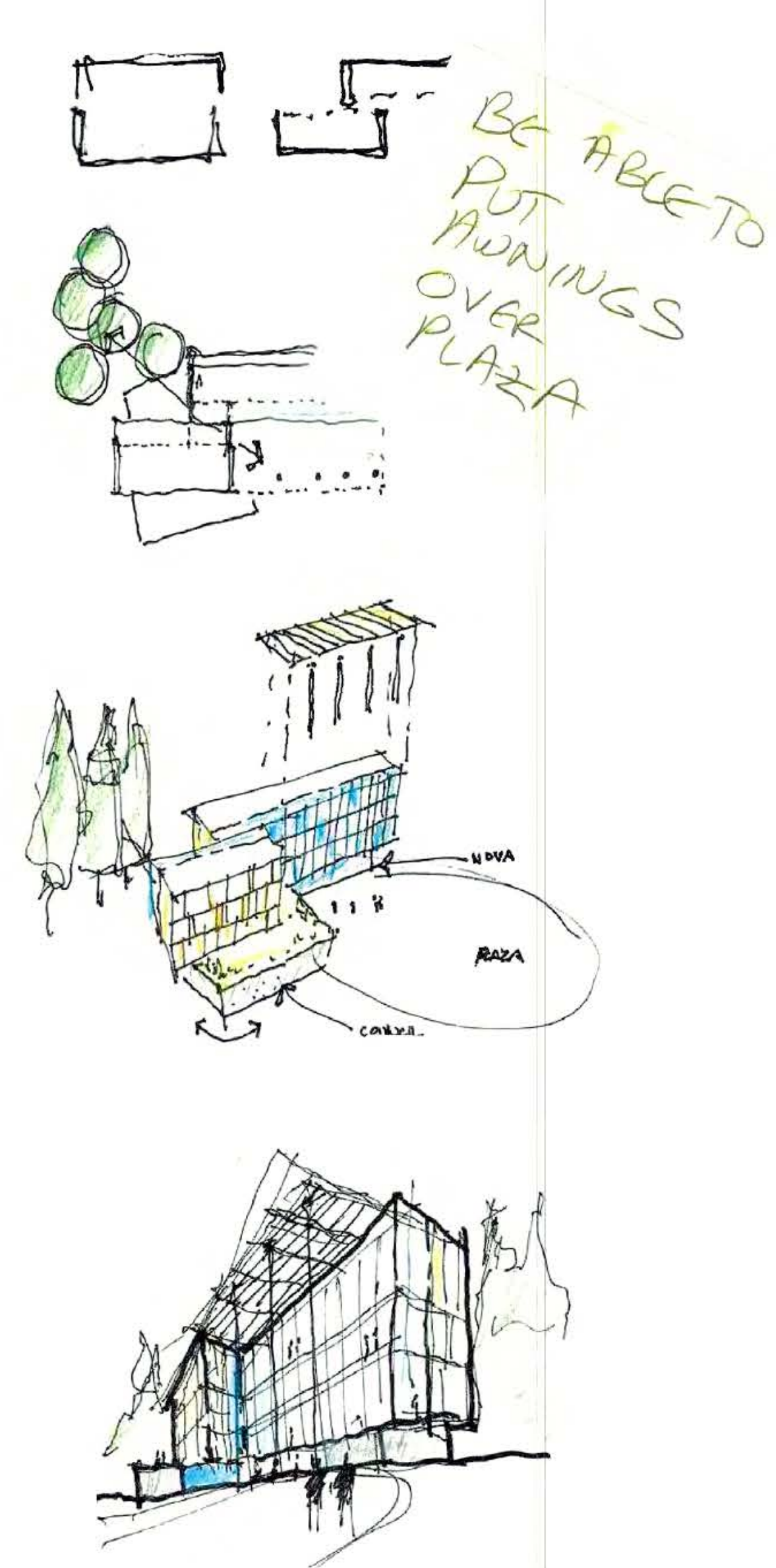


Option 2 : Phase One

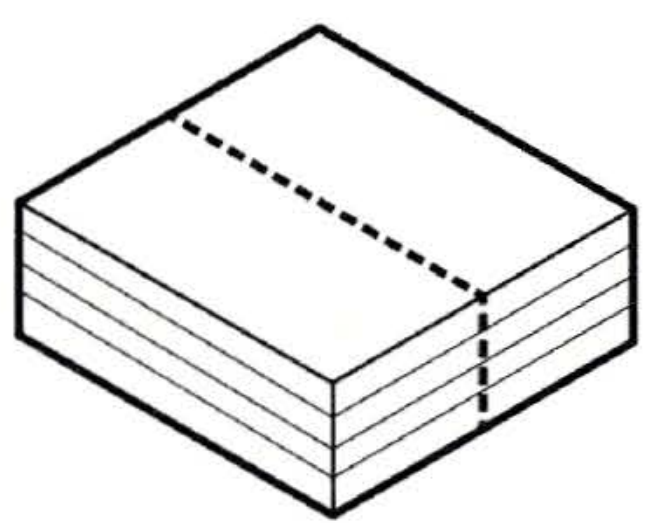
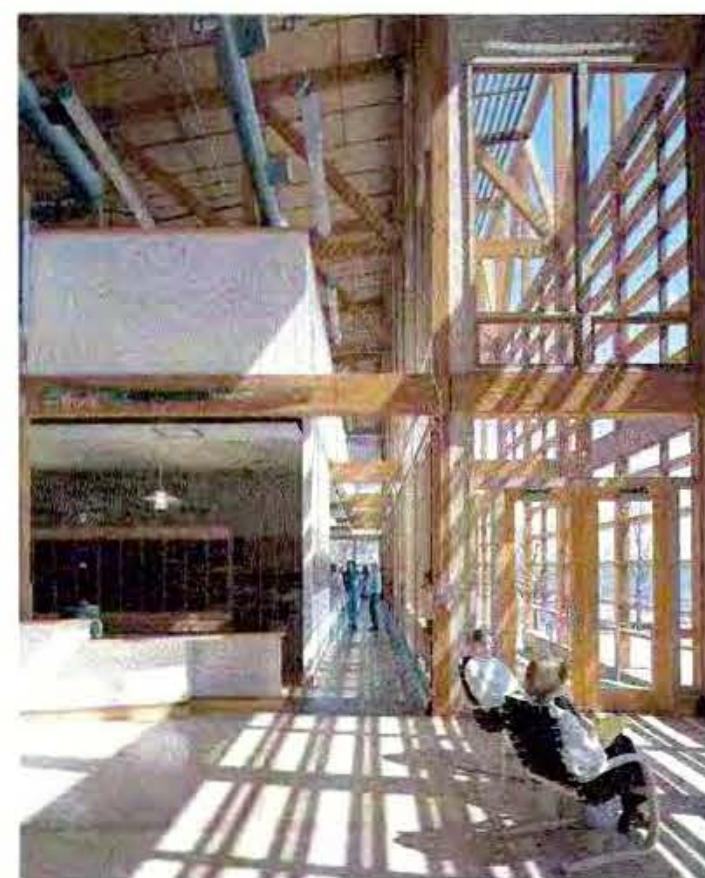
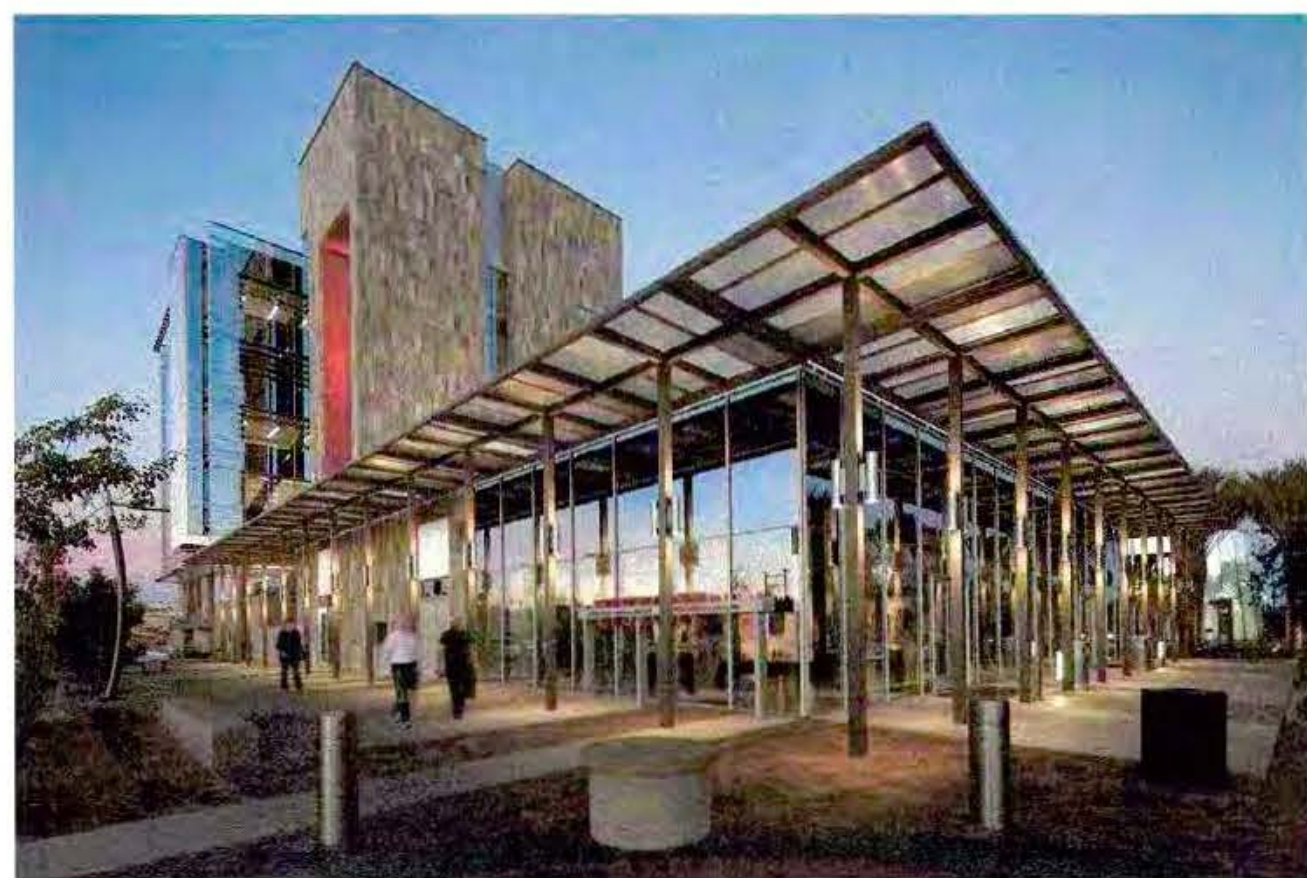
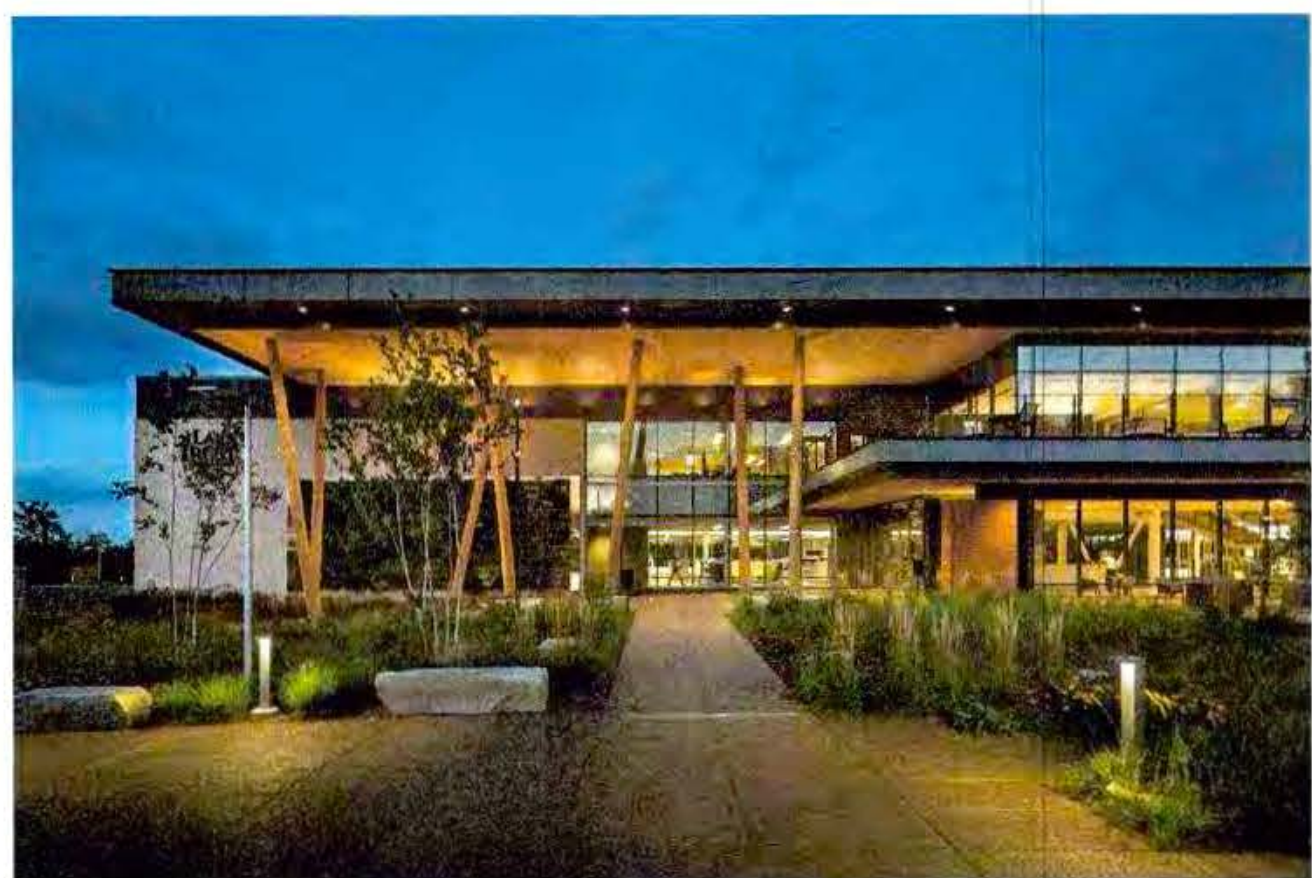


ART IDEAS
JENNIER
LASHBROOK
+
ZADAR Croatia
Sun Salutation

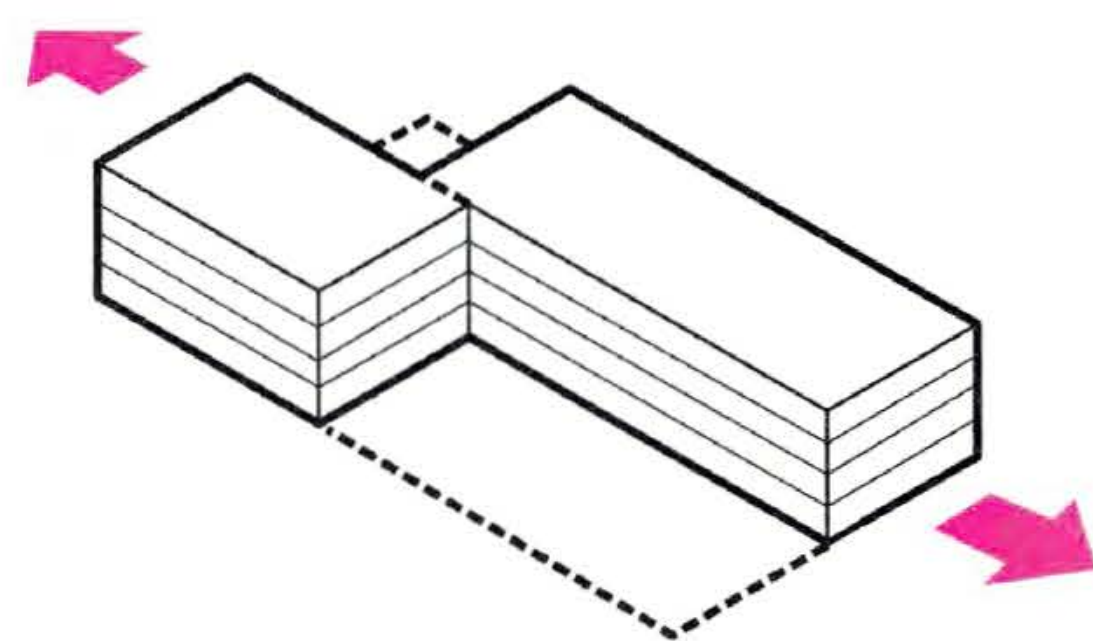




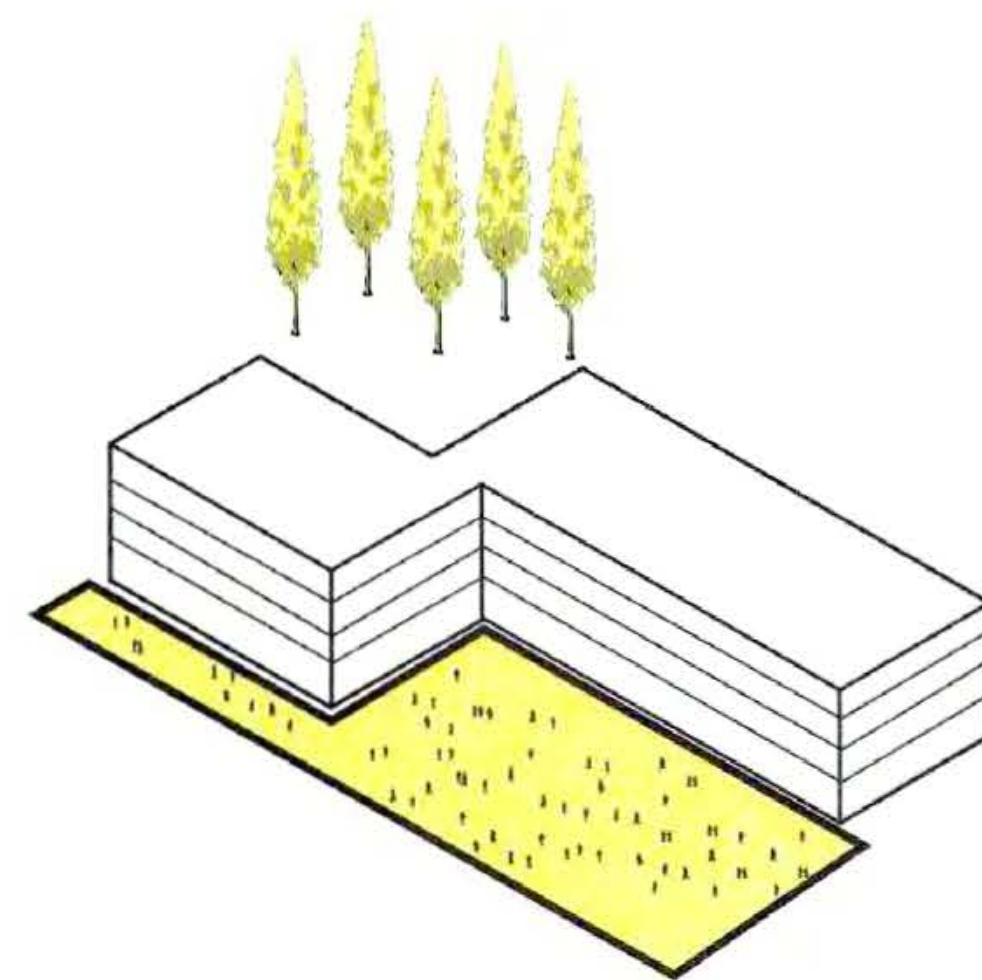
Option 1
+ Curved
Building
- Olive



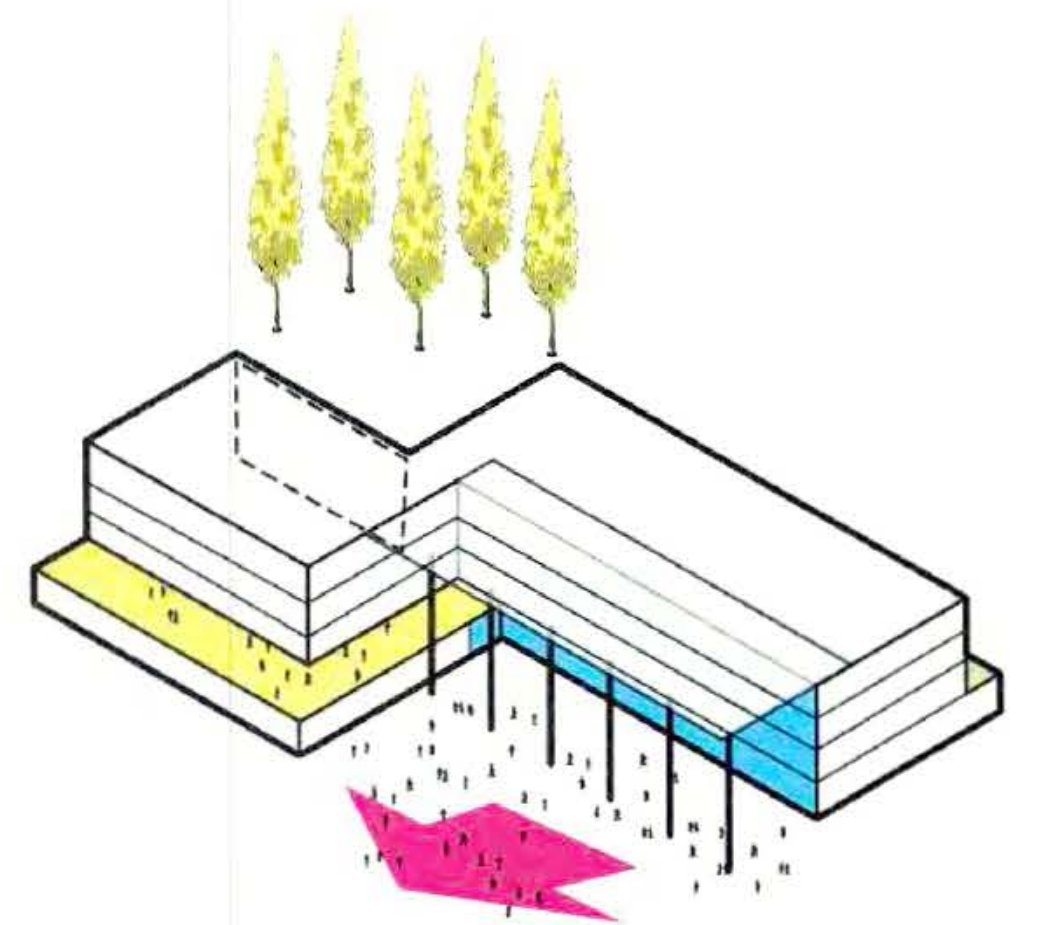
PROGRAM



"SLIDE "



PLAZA



CONNECTION

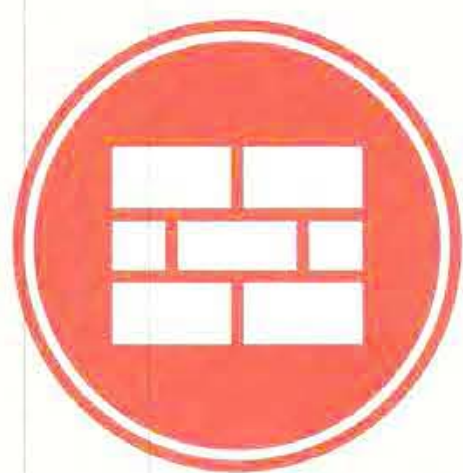
SUSTAINABILITY



NET ZERO
ENERGY



WATER
SECURITY



RESILIENCE



CARBON

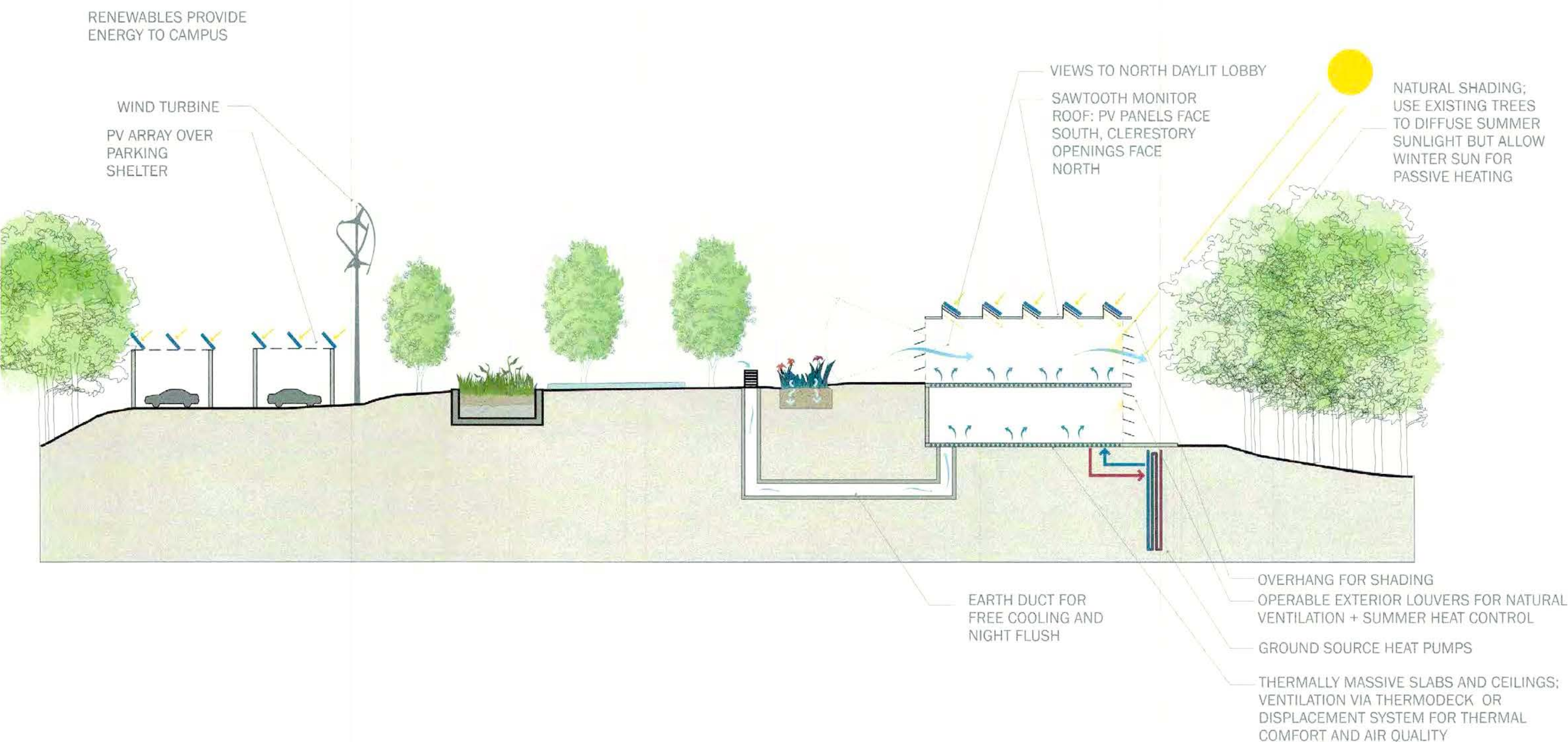
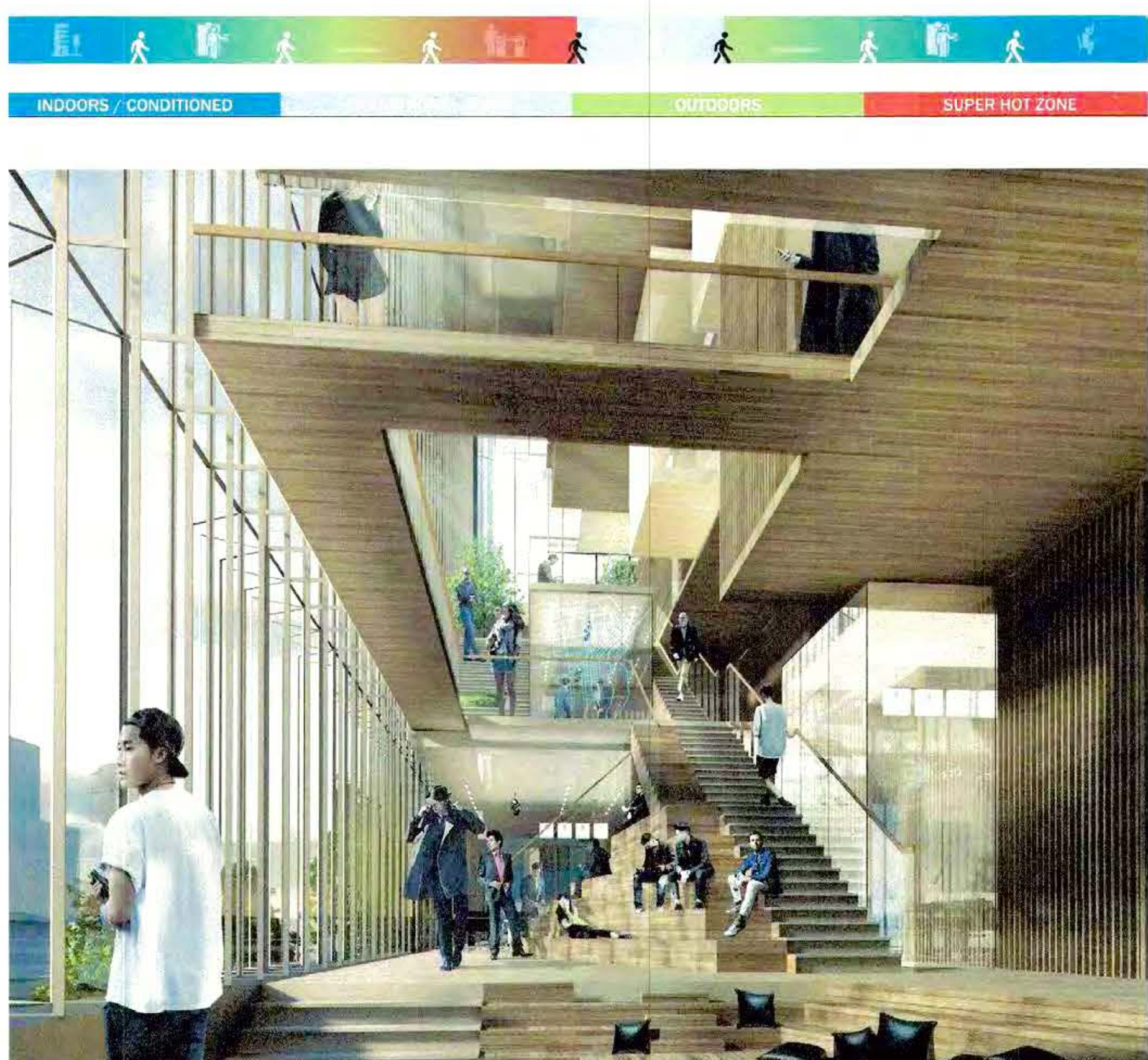
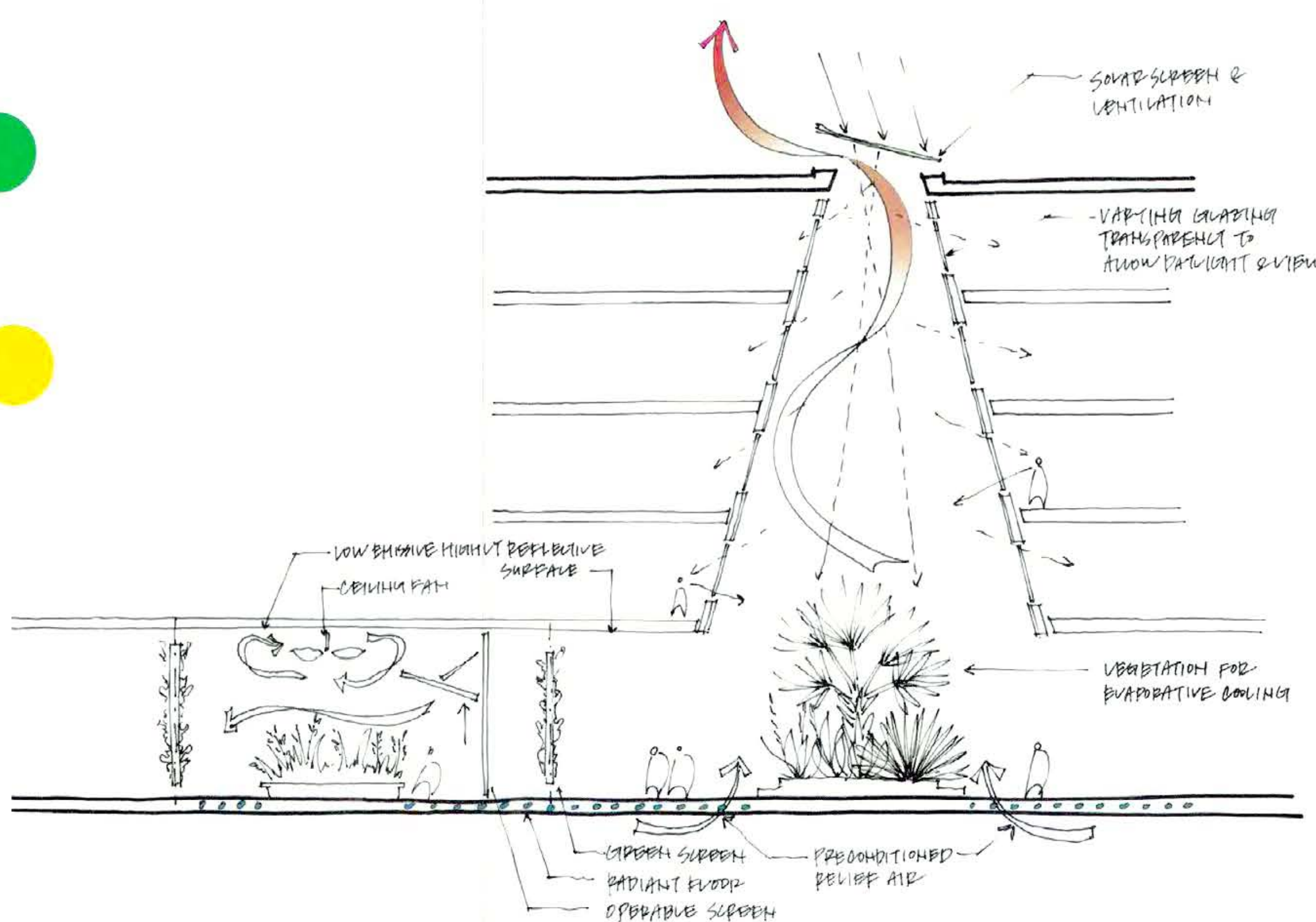


HEALTHY
BUILDINGS

Passive Building Natural Ventilation + Daylight



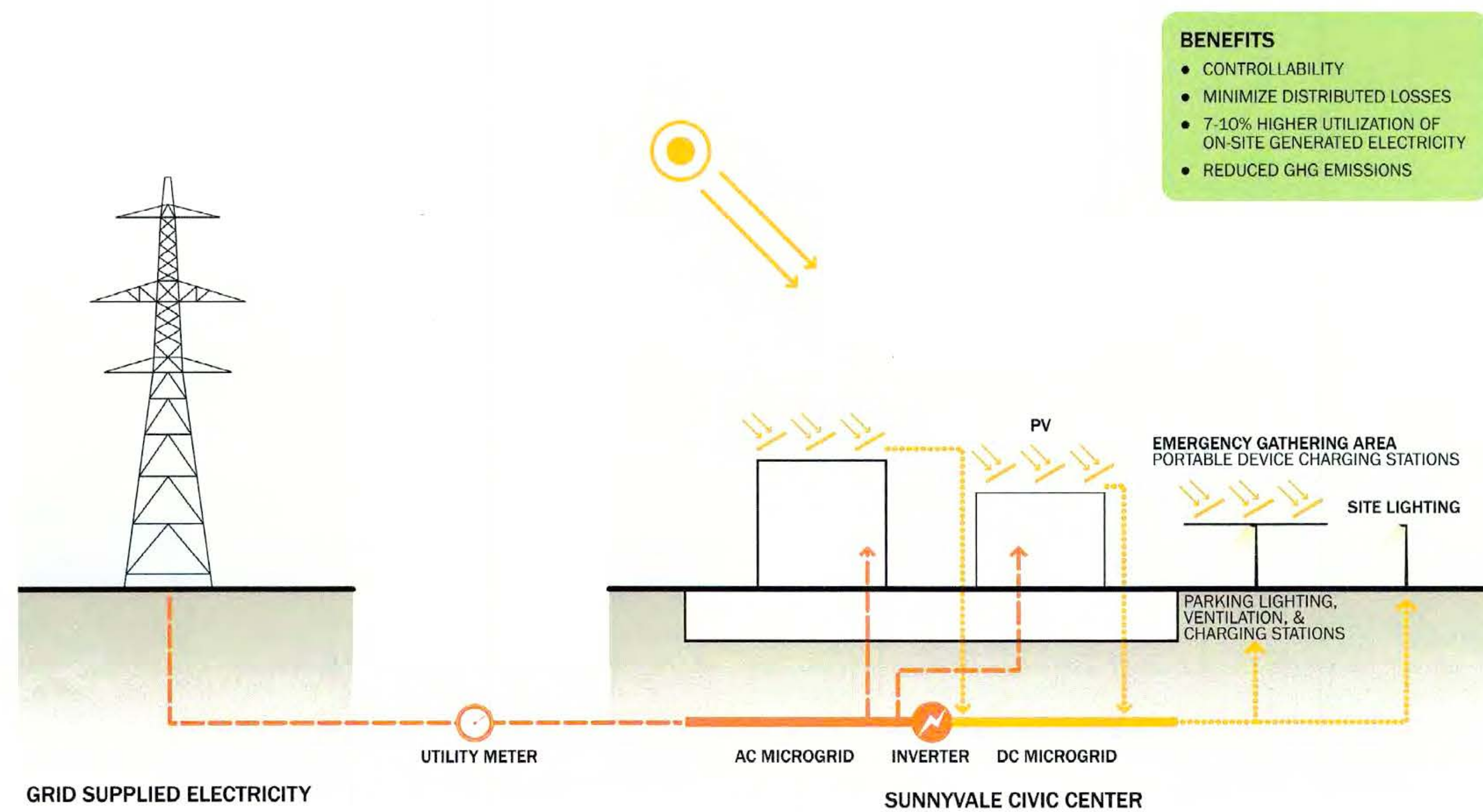
- Optimize building design for natural ventilation and natural daylight.
- Create thermal transition between exterior and interior with semi-conditioned spaces.



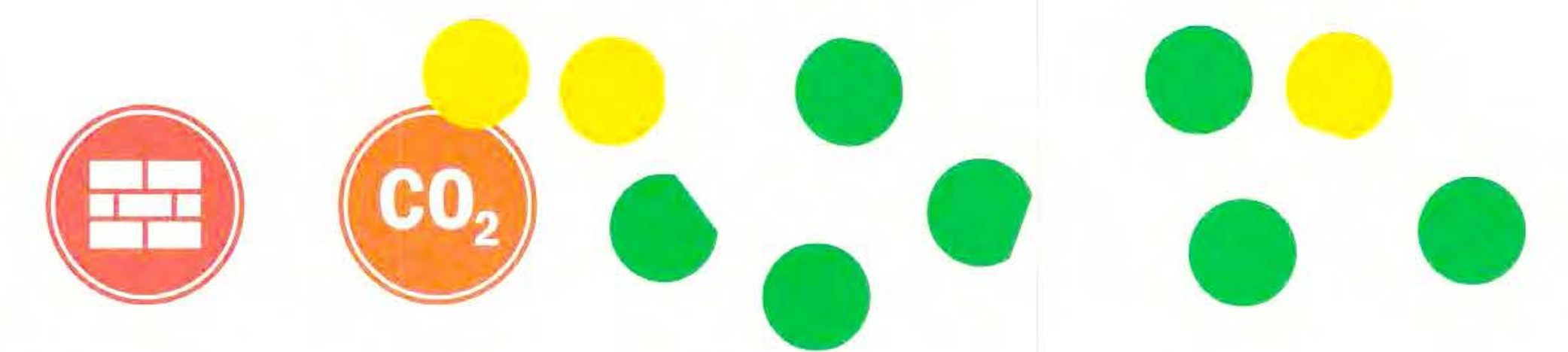
Campus Net Zero Extend NZE to Site



- Energy efficient library and DPS building designs.
- Provide substantial on-site photovoltaic generation to offset 100% of civic center energy consumption.



Resilient Energy Systems Microgrid & Energy Storage



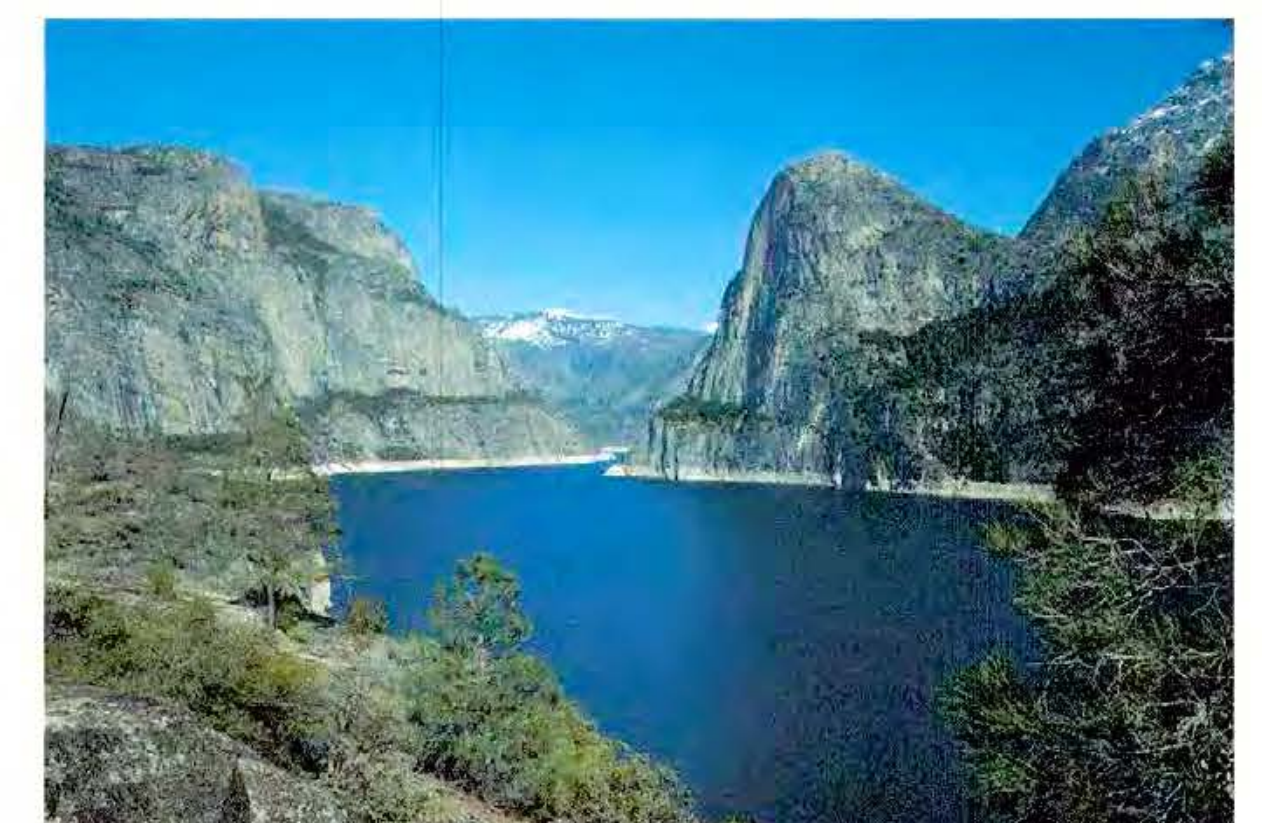
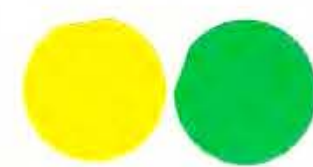
- PV canopies can serve as emergency gathering areas with portable device charging stations.
- DC Microgrid can maximize use of on-site PV electricity, specifically for lighting.
- Battery Storage for resilience, reduced reliance on grid electricity, and reduced site carbon emissions.

Potable Water Storage Emergency Local Water Resources

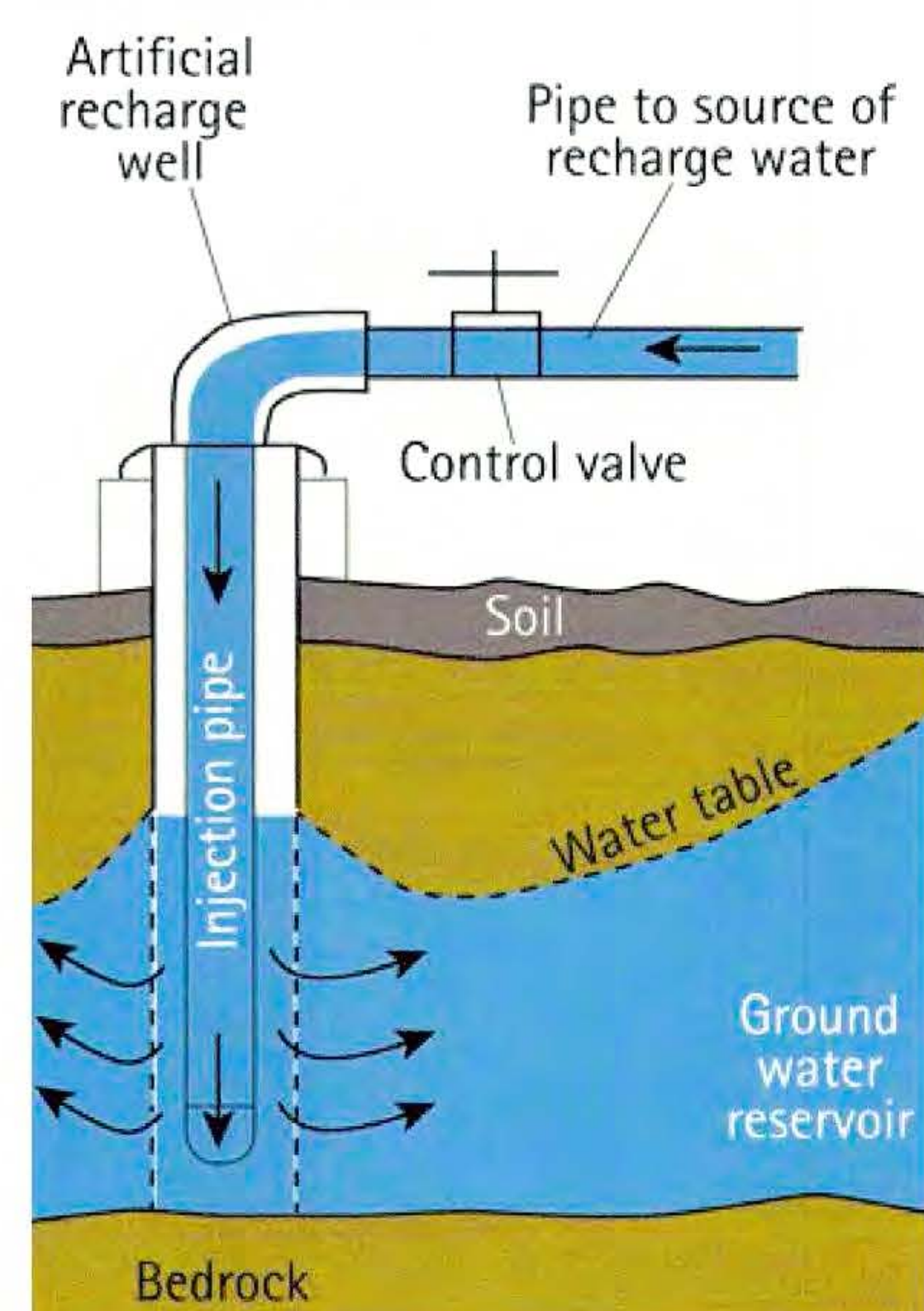


Aim for 100% normal year rain capture

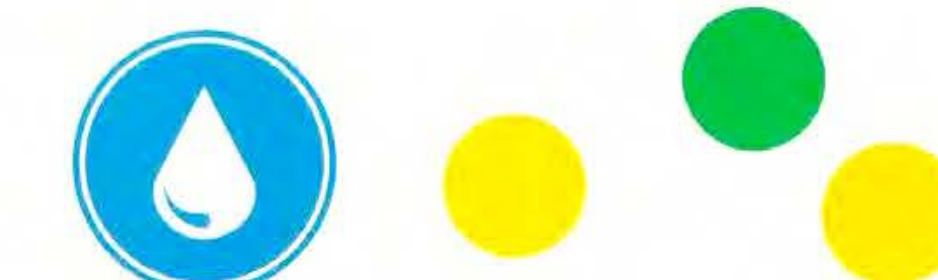
- Provide local potable water storage for community security during emergency event.



Injection Well

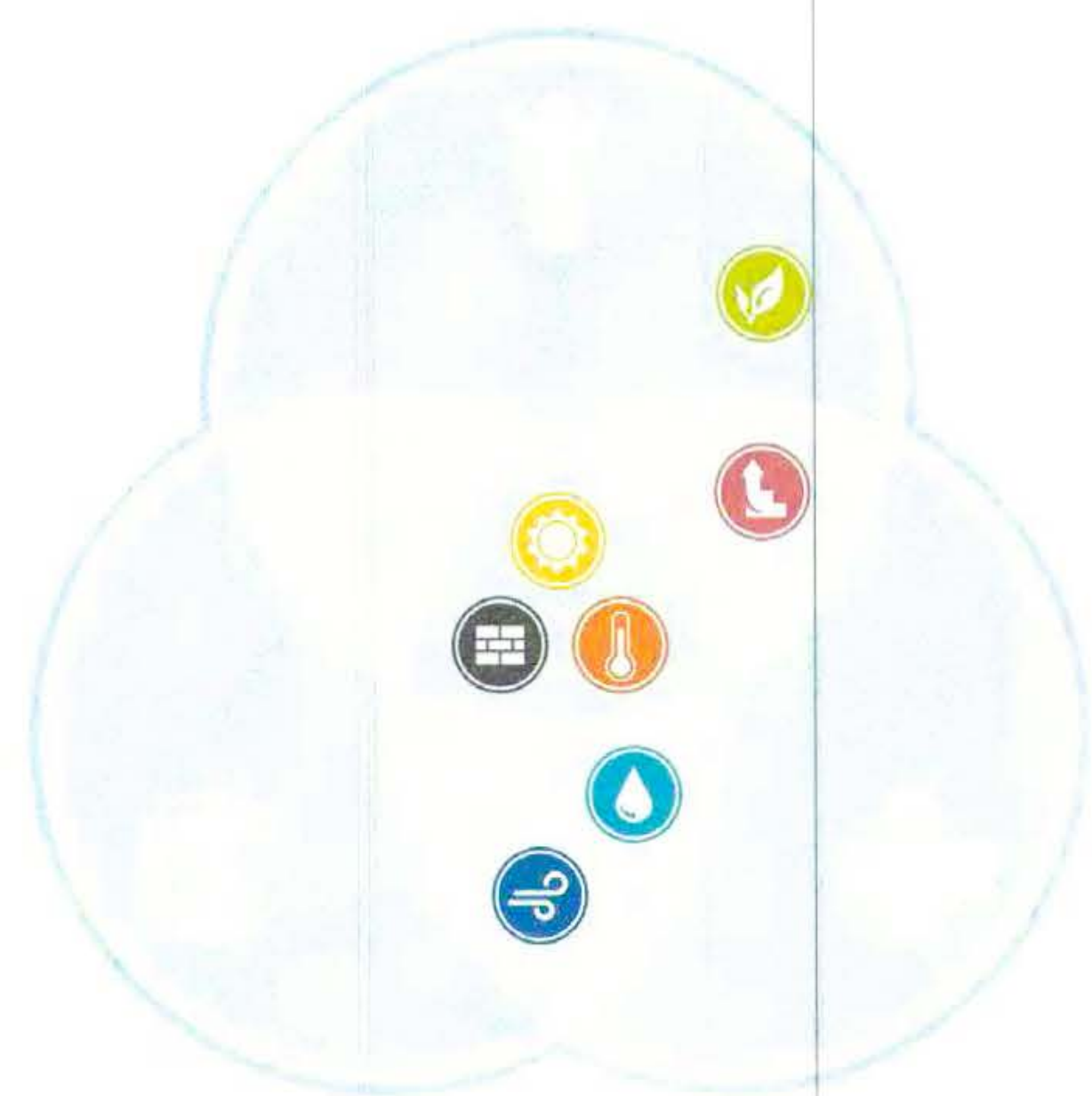


Stormwater Management Reduce Run-off, Recharge Groundwater



Injection well is an oversight. Consult Santa Clara Valley Water District staff on the risks of injection wells.
M.L.S.

- Reduce surface parking and impervious area.
- Use rain gardens, bioswales, and bioretention to reduce stormwater run-off.
- Use injection wells to recharge aquifer during storm events.



- PROTECT OCCUPANT HEALTH
- PROMOTE OCCUPANT FITNESS + WELLBEING
- PREVENT ENVIRONMENTAL HARM



Healthy Buildings

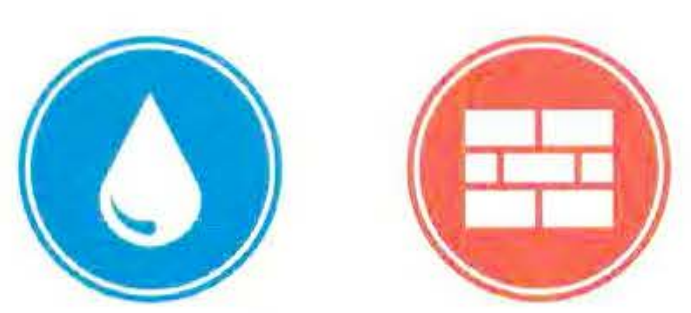
Improve Occupant Wellness



- Eliminate use of building materials containing red list chemicals such as PVC, CFCs, & formaldehyde.
- Promote active design and biophilia to improve occupant wellbeing

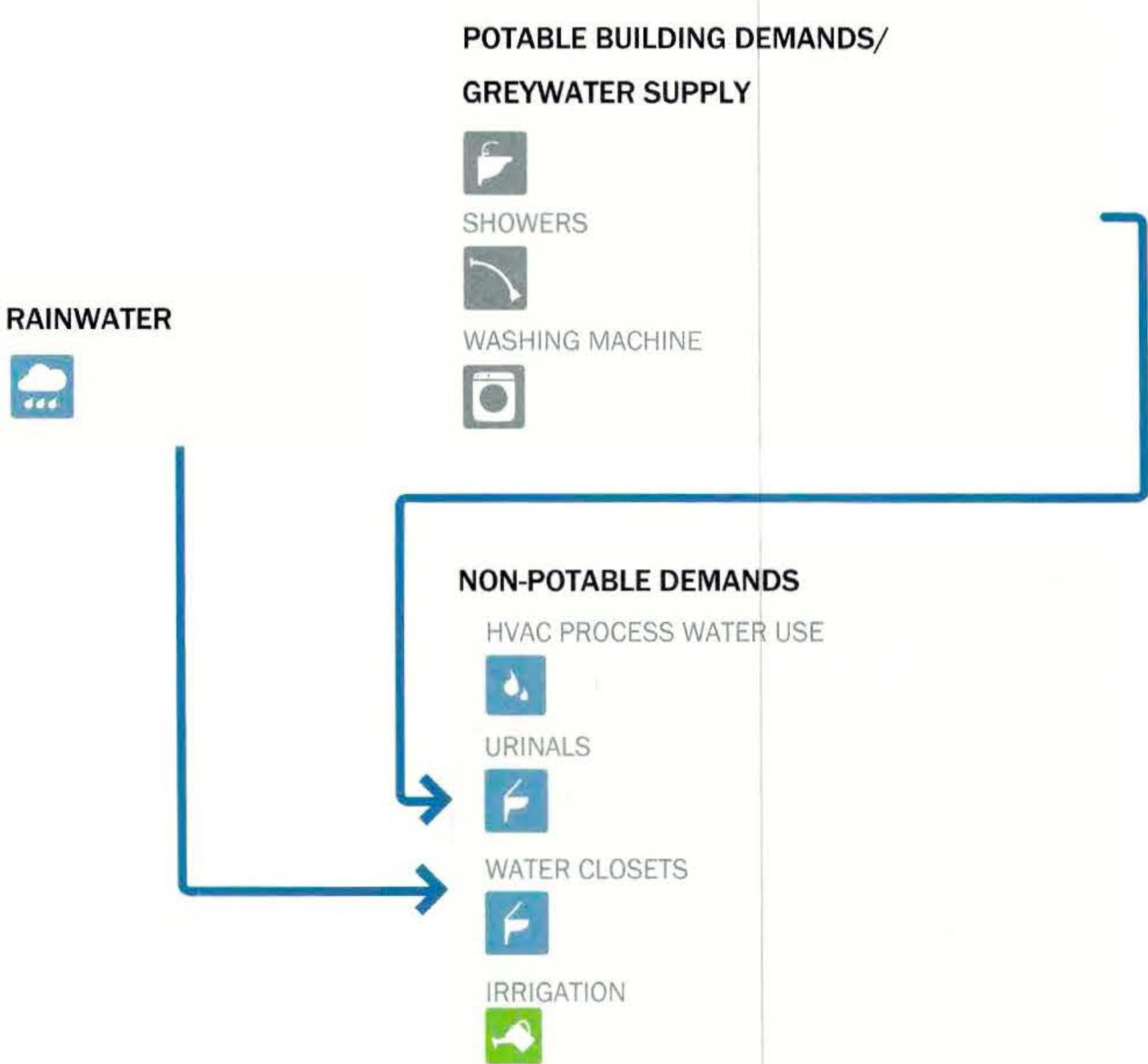
Water Reuse

Zero Water Waste



- Use Rainwater or Greywater Collection to eliminate potable water use for irrigation, flushing, or cooling towers.

Rainwater is better used for recharging our aquifer through rain gardens, bioswales, & trees. More practical to use city's recycled water for flushing toilets. Use waterless urinals.



Community Feedback

Post Your Ideas Here!

TREE PRESERVATION

Preserve our trees. They give fresh air, reduce stormwater runoff, increase water infiltration into the ground, reduce urban heat island effects.

Add bus stops near the library, City Hall, DPS, and Community garden.

I want a playground - Kara

KEEP OLIVE AVE

Install Rain Gardens
↳ tie into educational programs for the community

Preserve Keep Olive

PUBLIC FEEDBACK:

- Can olive be moved down to retain access?

- Library comment
- please add a book return area close to parking/driving area. Sometimes you just need to return books, but the current return location is too far to leave young children in the car while you take books in. Previously there was a book return area right by the 10-minute parking spaces, then it was turned into bike parking. MANY friends with young children have expressed the same opinion.



Thanks
for the
inspired views
of the 2 choices!

→ GREAT
Workshop!



Sunnyvale

Civic Center Modernization Project

Master Plan Workshop

Comments are on:



Master Plan



Architecture



Sustainability

Name (Optional): _____

Date: 10/12/2017

Comments:

LOVE THE CURVES & OPEN
SPACE. COULD GO HIGHER w/ MORE
VARIATION IN GRADE & SERIES OF
BUILDINGS - BUILDINGS AS ART!



Sunnyvale

Civic Center Modernization Project

Master Plan Workshop

Comments are on:



Master Plan



Architecture



Sustainability

Name (Optional): _____

Date: 10/12/2017

Comments: renovated and
The library should be preserved; it is a historical building
with ^{a big} stained glass window in the Quiet Room. A new children's library can be
added with a small playground in front & a coffee shop. ~~At one of the~~
~~community outreach meetings a couple of years ago, the consultant~~ The small
plaza in front of the library should be preserved too, with the "Out to
lunch" statue that children love. Olive should be preserved;
a bus runs on Olive to drop people off right outside the library.

We appreciate your comments! Comments may also be e-mailed to MyCivicCenter@Sunnyvale.ca.gov



Sunnyvale

Civic Center Modernization Project

Master Plan Workshop

Comments are on:

☐

Master Plan

☐

Architecture

☒

Sustainability

Name (Optional): _____

Date: 10/12/2017

Comments:

TWO PRIORITIES, BOTH RELATE TO
SURVIVAL : ① RESILIENT INFRASTRUCTURE
FOR ALL CITY HALL/DPS 10 ^{MICRO} GRID, WATER, WASTE
② LONG-TERM SURVIVAL = NET 0 to Net +,
Sustainable WATER, CATCHMENT & REUSE, &
ORGANIC/ECOSYSTEMS THAT WORK PROTECT
OUR BIOMES

We appreciate your comments! Comments may also be e-mailed to MyCivicCenter@Sunnyvale.ca.gov



Sunnyvale

Civic Center Modernization Project

Master Plan Workshop

Comments are on:



Master Plan



Architecture



Sustainability

Name (Optional): John Cordes

Date: 10/12/2017

Comments: Don't plan for one massive
library. Plan to add more branch
libraries ~~at~~ existing parks &
schools. PAIO ALTO has 9 branch
libraries. Sunnyvale should plan
for at least that many.

We appreciate your comments! Comments may also be e-mailed to MyCivicCenter@Sunnyvale.ca.gov



Sunnyvale

Civic Center Modernization Project

Master Plan Workshop

Comments are on:



Master Plan



Architecture



Sustainability

Name (Optional): John Cordes

Date: 10/12/2017

Comments: Like the central plaza concept
of Option 1, but like the curved
architecture of option 2 bldgs
better. Could you do curved bldgs
around the central plaza. Still
close Olive.

We appreciate your comments! Comments may also be e-mailed to MyCivicCenter@Sunnyvale.ca.gov



Sunnyvale

Civic Center Modernization Project

Master Plan Workshop

Comments are on:



Master Plan



Architecture



Sustainability

Name (Optional): John Cordes

Date: 10/12/2017

Comments: Plan to make it possible to
convert all the underground parking
to other uses as self driving
vehicles eliminate the need for
so much parking.

We appreciate your comments! Comments may also be e-mailed to MyCivicCenter@Sunnyvale.ca.gov



Sunnyvale

Civic Center Modernization Project

Master Plan Workshop

Comments are on:



Master Plan



Architecture



Sustainability

Name (Optional): John Cordes

Date: 10/12/2017

Comments: Plan for using Awnings to
create more usable outdoor
spaces. It is wonderful to be
able to be outdoors and still be
protected from rain and sun

We appreciate your comments! Comments may also be e-mailed to MyCivicCenter@Sunnyvale.ca.gov



Sunnyvale

Civic Center Modernization Project

Master Plan Workshop

Comments are on:



Master Plan



Architecture



Sustainability

Name (Optional): John Cordes

Date: 10/12/2017

Comments: Plan space for multiple bus
cutouts. One on MAT/Hillside
one on Elcamino real

We appreciate your comments! Comments may also be e-mailed to MyCivicCenter@Sunnyvale.ca.gov



Sunnyvale

Civic Center Modernization Project

Master Plan Workshop

Comments are on:



Master Plan



Architecture



Sustainability

Name (Optional): John Cordes

Date: 10/12/2017

Comments: Design
Plan for zero net buildings

We appreciate your comments! Comments may also be e-mailed to MyCivicCenter@Sunnyvale.ca.gov



Sunnyvale

Civic Center Modernization Project

Master Plan Workshop

Comments are on:

☐

Master Plan

☐

Architecture

☒

Sustainability

Name (Optional): John Cordes

Date: 10/12/2017

Comments:

Dual plumbing for toilets
so they can use reclaimed or
rain water.

We appreciate your comments! Comments may also be e-mailed to MyCivicCenter@Sunnyvale.ca.gov



Sunnyvale

Civic Center Modernization Project

Master Plan Workshop

Comments are on:

☐

Master Plan

☐

Architecture

☒

Sustainability

Name (Optional): John Cordes

Date: 10/12/2017

Comments:

Plan for 100% rain water capture
for a normal rain year or more for
landscape uses

We appreciate your comments! Comments may also be e-mailed to MyCivicCenter@Sunnyvale.ca.gov



Sunnyvale

Civic Center Modernization Project

Master Plan Workshop

Comments are on:

☐

Master Plan

☒

Architecture

☐

Sustainability

Name (Optional): John Cordes

Date: 10/12/2017

Comments:

Disappointed there isn't a "presence"
on Mt Hilda To make city hall 'look'
impressive. Maybe a small plaza
with flagpole + Impressive sculpture
would do the trick.

We appreciate your comments! Comments may also be e-mailed to MyCivicCenter@Sunnyvale.ca.gov



Sunnyvale

Civic Center Modernization Project

Master Plan Workshop

Comments are on:

☒

Master Plan

☒

Architecture

☐

Sustainability

Name (Optional): John Cordes

Date: 10/12/2017

Comments:

There needs to be drive thru
drop off for the Library.

We appreciate your comments! Comments may also be e-mailed to MyCivicCenter@Sunnyvale.ca.gov



Sunnyvale

Civic Center Modernization Project

Master Plan Workshop

Comments are on:



Master Plan



Architecture



Sustainability

Name (Optional): John Cordes

Date: 10/12/2017

Comments: In Option 2, The parking garage
should abut The Library and The
access To The parking structure
should be on The other side closer
to matilda

We appreciate your comments! Comments may also be e-mailed to MyCivicCenter@Sunnyvale.ca.gov



Sunnyvale

Civic Center Modernization Project

Master Plan Workshop

Comments are on:



Master Plan



Architecture



Sustainability

Name (Optional): John Cordes

Date: 10/12/2017

Comments: I don't Like The distance from
parking garage To Library in option 2,
if They need To be this far apart,
There should be a covered walkway
between them.

We appreciate your comments! Comments may also be e-mailed to MyCivicCenter@Sunnyvale.ca.gov



Sunnyvale

Civic Center Modernization Project

Master Plan Workshop

Comments are on:



Master Plan



Architecture



Sustainability

Name (Optional): John Cardes

Date: 10/12/2017

Comments: In Option, I like ^{the} Large open
space along pastoria

We appreciate your comments! Comments may also be e-mailed to MyCivicCenter@Sunnyvale.ca.gov



Sunnyvale

Civic Center Modernization Project

Master Plan Workshop

Comments are on:



Master Plan



Architecture



Sustainability

Name (Optional): John Cardes

Date: 10/12/2017

Comments: Reuse some of the brick from
the existing building to create a
connection to the past.

We appreciate your comments! Comments may also be e-mailed to MyCivicCenter@Sunnyvale.ca.gov



Sunnyvale

Civic Center Modernization Project

Master Plan Workshop

Comments are on:



Master Plan



Architecture



Sustainability

Name (Optional): Michelle Maginist

Date: 10/12/2017

Comments: I, and my kids, much prefer the layout
and design of option 2. Several ideas: - a small
pond - art/sculptures that are ok/good for
kids to climb on & explore in the greenspace.

We appreciate your comments! Comments may also be e-mailed to MyCivicCenter@Sunnyvale.ca.gov

Campus Experience

1. I spend most of my time on the Civic Center Campus in the following spaces (identify 3, in order):

1 City Hall (any of 4 existing buildings)

- ☐ City Clerk
- ☒ Council Chambers
- ☐ Finance/Utility payments
- ☒ Meetings with City Staff or Councilmembers
- ☐ One-Stop Building/Planning/Engineering information/permits
- ☒ Other (please specific) - need non profit meeting spaces @ low cost

2 Library

- ☒ Programs
- ☐ Research
- ☐ Reading

 NOVA Workforce Services

- ☐ Job Seeker
- ☐ Job Training

 Campus Open Spaces

- ☐ Community Garden
- ☐ Other

 Public Safety

- ☐ Reporting an issue
- ☐ Paying a fine
- ☐ Obtaining a license

 I do not regularly use the Civic Center Campus

Other, please explain _____

2. I would like to see more open spaces on the Civic Center Campus that includes _____ (mark all that apply)

 Walking trails

☒ Art

☒ Open spaces

☒ Trees

 Landscape/garden areas

☒ Plaza spaces

 I do not want any more open spaces on the Civic Center Campus

 Other

3. I might stay on the Civic Center Campus for longer periods or more often if there was more _____ (mark all that apply)

- ☐ Accessible power outlets
 - ☒ Comfortable furniture
 - ☒ Wi-Fi availability
 - ☒ Writable surfaces
 - ☒ Food
 - ☐ More convenient bicycle parking
 - ☐ More secure bicycle parking
 - ☒ Private study/work spaces
 - ☒ Collaborative study/work spaces
 - ☒ Community meeting spaces
 - ☒ Outdoor Events (music, festivals, etc.)
 - ☐ Exercise Course
 - ☐ Walking Trails
 - ☐ Kids Playground
 - ☐ Outdoor spaces
 - ☐ I do not want to spend more time at the Civic Center Campus
 - ☐ Other
-
-

Alternative Master Plan Ideas

Two alternatives have been developed as a future vision for the Civic Center Master Plan. The following questions describe the intent of each alternative and ask you qualitative questions regarding the pros and cons of each.

ALTERNATIVE 1 (Retain Olive)

4. I like these features of Alternative 1 – mark all that apply

- ☐ Keeping Olive as a through street
 - ☐ Quantity of open space
 - ☐ Location and adequacy parking
 - ☒ Safe pedestrian pathways
 - ☐ Building entries located around a new central plaza
 - ☒ Supports a variety of community uses in outdoor spaces
 - ☐ Layout of vehicle, pedestrian, and bicycle circulation paths
 - ☐ Other, please describe
-
-

5. I do not like these features of Alternative 1 – mark all that apply

- ☒ Keeping Olive as a through street
 - ☐ Quantity of open space
 - ☐ Location and adequacy parking
 - ☐ Safe pedestrian pathways
 - ☐ Building entries located around a new central plaza
 - ☐ Supports a variety of community uses in outdoor spaces
 - ☐ Layout of vehicle, pedestrian, and bicycle circulation paths
 - ☐ Other, please describe
-
-

6. Other comments you would like to share about Alternative 1:

Don't like collisions or slow driving area

ALTERNATIVE 2 (Remove Olive)

7. I like these features of Alternative 2 – mark all that apply

- ☒ Removing Olive as a through street
 - ☒ Quantity of open space
 - ☒ Location and adequacy parking
 - ☒ Safe pedestrian pathways
 - ☐ Creating a shared plaza between City Hall and the Library
 - ☐ Supports a variety of community uses in outdoor spaces
 - ☐ Layout of vehicle, pedestrian, and bicycle circulation paths
 - ☐ Other, please describe
-
-

8. I do not like these features of Alternative 2 – mark all that apply

- ☐ Removing Olive as a through street
- ☐ Quantity of open space
- ☐ Location and adequacy parking
- ☐ Safe pedestrian pathways
- ☐ Creating a shared plaza between City Hall and the Library
- ☐ Supports a variety of community uses in outdoor spaces
- ☐ Layout of vehicle, pedestrian, and bicycle circulation paths
- ☒ Other, please describe

Do not like the design. Not aesthetic, less glass, less square

9. Other comments you would like to share about Alternative 2:

need a beautiful city hall that is functional & efficient & makes people proud & impressed @ the quality.

GENERAL INFORMATION

10. I most frequently use the Civic Center Campus as:

- ☐ Employee (I work here)
 - ☒ Sunnyvale Resident
 - ☐ Sunnyvale Business Employee or Non-Resident Property owner
 - ☐ Visitor
 - ☐ I have never been to the Civic Center Campus
 - ☐ Other, please explain
-
-

11. I live approximately _____ from the Civic Center

- ☐ Less than 1 mile
- ☐ 1-2 miles
- ☒ 3-5 miles
- ☐ 6-10 miles
- ☐ 10+ miles

12. I work approximately _____ from the Civic Center

- ☐ Less than 1 mile
- ☐ 1-2 miles
- ☐ 3-5 miles
- ☐ 6-10 miles
- ☒ 10+ miles

Thank you for all your work to ~~no~~ create a great Civic Center. Looking forward to the final result

Campus Experience

1. I spend most of my time on the Civic Center Campus in the following spaces (identify 3, in order):

___ City Hall (any of 4 existing buildings)

- ☐ City Clerk
- ☐ Council Chambers
- ☐ Finance/Utility payments
- ☐ Meetings with City Staff or Councilmembers
- ☐ One-Stop Building/Planning/Engineering information/permits
- ☐ Other (please specific)

Library

- ☒ Programs
- ☒ Research
- ☒ Reading

___ NOVA Workforce Services

- ☐ Job Seeker
- ☐ Job Training

___ Campus Open Spaces

- ☐ Community Garden
- ☐ Other

___ Public Safety

- ☐ Reporting an issue
- ☐ Paying a fine
- ☐ Obtaining a license

___ I do not regularly use the Civic Center Campus

Other, please explain _____

2. I would like to see more open spaces on the Civic Center Campus that includes _____ (mark all that apply)

___ Walking trails

___ Art

☒ Open spaces

☒ Trees

☒ Landscape/garden areas

___ Plaza spaces

___ I do not want any more open spaces on the Civic Center Campus

___ Other

3. I might stay on the Civic Center Campus for longer periods or more often if there was more _____ (mark all that apply)

- ☐ Accessible power outlets
 - ☒ Comfortable furniture
 - ☒ Wi-Fi availability
 - ☐ Writable surfaces
 - ☒ Food
 - ☐ More convenient bicycle parking
 - ☐ More secure bicycle parking
 - ☐ Private study/work spaces
 - ☐ Collaborative study/work spaces
 - ☐ Community meeting spaces
 - ☒ Outdoor Events (music, festivals, etc.)
 - ☒ Exercise Course
 - ☐ Walking Trails
 - ☐ Kids Playground
 - ☐ Outdoor spaces
 - ☐ I do not want to spend more time at the Civic Center Campus
 - ☐ Other
-
-

Alternative Master Plan Ideas

Two alternatives have been developed as a future vision for the Civic Center Master Plan. The following questions describe the intent of each alternative and ask you qualitative questions regarding the pros and cons of each.

ALTERNATIVE 1 (Retain Olive)

4. I like these features of Alternative 1 – mark all that apply

- ☐ Keeping Olive as a through street
 - ☐ Quantity of open space
 - ☐ Location and adequacy parking
 - ☐ Safe pedestrian pathways
 - ☐ Building entries located around a new central plaza
 - ☐ Supports a variety of community uses in outdoor spaces
 - ☐ Layout of vehicle, pedestrian, and bicycle circulation paths
 - ☐ Other, please describe
-
-

5. I do not like these features of Alternative 1 – mark all that apply

- ☒ Keeping Olive as a through street
- ☐ Quantity of open space
- ☐ Location and adequacy parking
- ☒ Safe pedestrian pathways
- ☒ Building entries located around a new central plaza
- ☐ Supports a variety of community uses in outdoor spaces
- ☐ Layout of vehicle, pedestrian, and bicycle circulation paths
- ☐ Other, please describe

6. Other comments you would like to share about Alternative 1:

ALTERNATIVE 2 (Remove Olive)

7. I like these features of Alternative 2 – mark all that apply

- ☒ Removing Olive as a through street
- ☒ Quantity of open space
- ☒ Location and adequacy parking
- ☒ Safe pedestrian pathways
- ☒ Creating a shared plaza between City Hall and the Library
- ☒ Supports a variety of community uses in outdoor spaces
- ☐ Layout of vehicle, pedestrian, and bicycle circulation paths
- ☐ Other, please describe

8. I do not like these features of Alternative 2 – mark all that apply

- ☐ Removing Olive as a through street
- ☐ Quantity of open space
- ☐ Location and adequacy parking
- ☐ Safe pedestrian pathways
- ☐ Creating a shared plaza between City Hall and the Library
- ☐ Supports a variety of community uses in outdoor spaces
- ☐ Layout of vehicle, pedestrian, and bicycle circulation paths
- ☐ Other, please describe

9. Other comments you would like to share about Alternative 2:

GENERAL INFORMATION

10. I most frequently use the Civic Center Campus as:

- ☐ Employee (I work here)
- ☒ Sunnyvale Resident
- ☐ Sunnyvale Business Employee or Non-Resident Property owner
- ☐ Visitor
- ☐ I have never been to the Civic Center Campus
- ☐ Other, please explain

11. I live approximately _____ from the Civic Center

- ☒ Less than 1 mile
- ☐ 1-2 miles
- ☐ 3-5 miles
- ☐ 6-10 miles
- ☐ 10+ miles

12. I work approximately _____ from the Civic Center

- ☐ Less than 1 mile
- ☐ 1-2 miles
- ☐ 3-5 miles
- ☐ 6-10 miles
- ☐ 10+ miles

Campus Experience

1. I spend most of my time on the Civic Center Campus in the following spaces (identify 3, in order):

___ City Hall (any of 4 existing buildings)

- ☐ City Clerk
- ☐ Council Chambers
- ☐ Finance/Utility payments
- ☐ Meetings with City Staff or Councilmembers
- ☐ One-Stop Building/Planning/Engineering information/permits
- ☐ Other (please specific)

___ Library

- ☐ Programs
- ☐ Research
- ☐ Reading

___ NOVA Workforce Services

- ☐ Job Seeker
- ☐ Job Training

___ Campus Open Spaces

- ☐ Community Garden
- ☐ Other

___ Public Safety

- ☐ Reporting an issue
- ☐ Paying a fine
- ☐ Obtaining a license

☒ I do not regularly use the Civic Center Campus

Other, please explain _____

2. I would like to see more open spaces on the Civic Center Campus that includes _____ (mark all that apply)

☒ Walking trails

___ Art

☒ Open spaces

☒ Trees

☒ Landscape/garden areas

___ Plaza spaces

___ I do not want any more open spaces on the Civic Center Campus

___ Other

3. I might stay on the Civic Center Campus for longer periods or more often if there was more _____ (mark all that apply)

- ☐ Accessible power outlets
 - ☐ Comfortable furniture
 - ☐ Wi-Fi availability
 - ☐ Writable surfaces
 - ☒ Food
 - ☐ More convenient bicycle parking
 - ☐ More secure bicycle parking
 - ☒ Private study/work spaces
 - ☐ Collaborative study/work spaces
 - ☐ Community meeting spaces
 - ☒ Outdoor Events (music, festivals, etc.)
 - ☐ Exercise Course
 - ☐ Walking Trails
 - ☒ Kids Playground
 - ☒ Outdoor spaces
 - ☐ I do not want to spend more time at the Civic Center Campus
 - ☐ Other
-
-

Alternative Master Plan Ideas

Two alternatives have been developed as a future vision for the Civic Center Master Plan. The following questions describe the intent of each alternative and ask you qualitative questions regarding the pros and cons of each.

ALTERNATIVE 1 (Retain Olive)

4. I like these features of Alternative 1 – mark all that apply

- ☐ Keeping Olive as a through street
 - ☐ Quantity of open space
 - ☒ Location and adequacy parking
 - ☐ Safe pedestrian pathways
 - ☒ Building entries located around a new central plaza
 - ☒ Supports a variety of community uses in outdoor spaces
 - ☐ Layout of vehicle, pedestrian, and bicycle circulation paths
 - ☐ Other, please describe
-
-

5. I do not like these features of Alternative 1 – mark all that apply

- ☒ Keeping Olive as a through street
- ☒ Quantity of open space
- ☐ Location and adequacy parking
- ☐ Safe pedestrian pathways
- ☐ Building entries located around a new central plaza
- ☐ Supports a variety of community uses in outdoor spaces
- ☒ Layout of vehicle, pedestrian, and bicycle circulation paths
- ☐ Other, please describe

6. Other comments you would like to share about Alternative 1:

ALTERNATIVE 2 (Remove Olive)

7. I like these features of Alternative 2 – mark all that apply

- ☒ Removing Olive as a through street
- ☒ Quantity of open space
- ☐ Location and adequacy parking
- ☒ Safe pedestrian pathways
- ☒ Creating a shared plaza between City Hall and the Library
- ☐ Supports a variety of community uses in outdoor spaces
- ☐ Layout of vehicle, pedestrian, and bicycle circulation paths
- ☐ Other, please describe

8. I do not like these features of Alternative 2 – mark all that apply

- ☐ Removing Olive as a through street
- ☐ Quantity of open space
- ☒ Location and adequacy parking
- ☐ Safe pedestrian pathways
- ☐ Creating a shared plaza between City Hall and the Library
- ☐ Supports a variety of community uses in outdoor spaces
- ☒ Layout of vehicle, pedestrian, and bicycle circulation paths
- ☐ Other, please describe

9. Other comments you would like to share about Alternative 2:

GENERAL INFORMATION

10. I most frequently use the Civic Center Campus as:

- ☐ Employee (I work here)
- ☐ Sunnyvale Resident
- ☐ Sunnyvale Business Employee or Non-Resident Property owner
- ☐ Visitor
- ☒ I have never been to the Civic Center Campus
- ☐ Other, please explain

11. I live approximately _____ from the Civic Center

- ☐ Less than 1 mile
- ☐ 1-2 miles
- ☐ 3-5 miles
- ☒ 6-10 miles
- ☐ 10+ miles

12. I work approximately _____ from the Civic Center

- ☐ Less than 1 mile
 - ☐ 1-2 miles
 - ☐ 3-5 miles
 - ☐ 6-10 miles
 - ☐ 10+ miles
- Don't work*

Campus Experience

1. I spend most of my time on the Civic Center Campus in the following spaces (identify 3, in order):

___ City Hall (any of 4 existing buildings)

- ☐ City Clerk
- ☒ Council Chambers
- ☐ Finance/Utility payments
- ☐ Meetings with City Staff or Councilmembers
- ☐ One-Stop Building/Planning/Engineering information/permits
- ☐ Other (please specific)

___ Library

- ☐ Programs
- ☐ Research
- ☐ Reading

___ NOVA Workforce Services

- ☐ Job Seeker
- ☐ Job Training

___ Campus Open Spaces

- ☐ Community Garden
- ☐ Other

___ Public Safety

- ☐ Reporting an issue
- ☐ Paying a fine
- ☐ Obtaining a license

___ I do not regularly use the Civic Center Campus

Other, please explain _____

2. I would like to see more open spaces on the Civic Center Campus that includes _____ (mark all that apply)

___ Walking trails

___ Art

___ Open spaces

___ Trees

___ Landscape/garden areas

☒ Plaza spaces

___ I do not want any more open spaces on the Civic Center Campus

___ Other

Spaces for city events and markets, like
Sunnyvale Downtown Market series

3. I might stay on the Civic Center Campus for longer periods or more often if there was more _____ (mark all that apply)
- ☐ Accessible power outlets
 - ☐ Comfortable furniture
 - ☐ Wi-Fi availability
 - ☐ Writable surfaces
 - ☒ Food
 - ☐ More convenient bicycle parking
 - ☐ More secure bicycle parking
 - ☐ Private study/work spaces
 - ☐ Collaborative study/work spaces
 - ☐ Community meeting spaces
 - ☒ Outdoor Events (music, festivals, etc.)
 - ☐ Exercise Course
 - ☐ Walking Trails
 - ☐ Kids Playground
 - ☐ Outdoor spaces
 - ☐ I do not want to spend more time at the Civic Center Campus
 - ☐ Other
-
-

Alternative Master Plan Ideas

Two alternatives have been developed as a future vision for the Civic Center Master Plan. The following questions describe the intent of each alternative and ask you qualitative questions regarding the pros and cons of each.

ALTERNATIVE 1 (Retain Olive)

4. I like these features of Alternative 1 – mark all that apply
- ☐ Keeping Olive as a through street
 - ☒ Quantity of open space
 - ☐ Location and adequacy parking
 - ☐ Safe pedestrian pathways
 - ☒ Building entries located around a new central plaza
 - ☒ Supports a variety of community uses in outdoor spaces
 - ☐ Layout of vehicle, pedestrian, and bicycle circulation paths
 - ☐ Other, please describe
-
-

5. I do not like these features of Alternative 1 – mark all that apply

- ☒ Keeping Olive as a through street
 - ☐ Quantity of open space
 - ☐ Location and adequacy parking
 - ☐ Safe pedestrian pathways
 - ☐ Building entries located around a new central plaza
 - ☐ Supports a variety of community uses in outdoor spaces
 - ☐ Layout of vehicle, pedestrian, and bicycle circulation paths
 - ☐ Other, please describe
-
-

6. Other comments you would like to share about Alternative 1:

No sense keeping Olive when the site can be accessed by a garage on the perimeter

ALTERNATIVE 2 (Remove Olive)

7. I like these features of Alternative 2 – mark all that apply

- ☒ Removing Olive as a through street
 - ☒ Quantity of open space
 - ☐ Location and adequacy parking
 - ☐ Safe pedestrian pathways
 - ☒ Creating a shared plaza between City Hall and the Library
 - ☒ Supports a variety of community uses in outdoor spaces
 - ☐ Layout of vehicle, pedestrian, and bicycle circulation paths
 - ☐ Other, please describe
-
-

8. I do not like these features of Alternative 2 – mark all that apply

- ☐ Removing Olive as a through street
 - ☐ Quantity of open space
 - ☐ Location and adequacy parking
 - ☐ Safe pedestrian pathways
 - ☐ Creating a shared plaza between City Hall and the Library
 - ☐ Supports a variety of community uses in outdoor spaces
 - ☐ Layout of vehicle, pedestrian, and bicycle circulation paths
 - ☐ Other, please describe
-
-

9. Other comments you would like to share about Alternative 2:

- Prefer Alt 2 over Alt 1
- Add outdoor playground by Library
- Like taking BLS out and make it pedestrian friendly.

GENERAL INFORMATION

10. I most frequently use the Civic Center Campus as:

- ☐ Employee (I work here)
 - ☒ Sunnyvale Resident
 - ☐ Sunnyvale Business Employee or Non-Resident Property owner
 - ☐ Visitor
 - ☐ I have never been to the Civic Center Campus
 - ☐ Other, please explain
-
-

11. I live approximately _____ from the Civic Center

- ☐ Less than 1 mile
- ☐ 1-2 miles
- ☒ 3-5 miles
- ☐ 6-10 miles
- ☐ 10+ miles

12. I work approximately _____ from the Civic Center

- ☐ Less than 1 mile
- ☐ 1-2 miles
- ☐ 3-5 miles
- ☐ 6-10 miles
- ☒ 10+ miles

Thank you for all the work done on this!

BIKE & PEDESTRIAN COMMISSION

October 19, 2017 | 6:30-7:30pm

Council Chambers, Sunnyvale City Hall

1/4

SOMMERS CIVIC CENTER
MASTER PLAN
BIKE & PED COMMISSION

- MULTI-USE ON SOME TRAILS
BUT PROVIDE JUST WALKING
- FIRST CLASS BIKE PARKING
COVERED ENCLOSED
- HYBRID + PLAZA BUT ALSO
LIKE REMOVAL OF OLIVE
- BICYCLE SPEED SHOULD BE
CONSIDERED FOR PED.
- MORE BIKE PARKING FOR
LIBRARY / STROLLER PARKING
PLAY AREA

- 1 OR 2 MAIN PATHS BIKING^{2/4} AROUND PERIMETER
- BIKING FOR CHILDREN
- SAFE WALKING FOR KIDS & ELDERLY
- LIKES FLOW OF OPTION 1
- CLUSTERING BLDG MAKES SENSE
- BOOK DROP OFF
- DON'T LIKE WOOD CLADDING
- OUTDOOR GATHERING
- PLAY AREA

3/4

- PARKING DECK CLOSER TO LIBRARY
- SEPERATE BIKE/PEB PATHS
- LONG WALK TO CITY HALL IN OPTION 2
- NON TRADITIONAL BIKES — PARKING? LOOK TO DUTCH MODELS
- RECONFIGURABLE PARKING
- ZNE / ECO DISTRICTS - SHARING SYSTEMS

4/4

- CITY SHUTTLE
- PAID PARKING
- AGAINST CLOSING OLIVE
- PARKING TOO FAR FROM LIBRARY
- DON'T LIKE PLAZA w/ OLIVE
- MAINTAIN SOME SURFACE PARKING
- • SECURE BIKE PARKING - MAKE
VISIBLE & MAINTAINABLE
- MULTI USE PATHS BY DESIGN
- INCENTIVISE BIKING - EASE
& VISIBLE
- CONCERN ABOUT BIKE LANE @
MATILDA & EL CAMINO REAL

PLANNING COMMISSION

October 23, 2017 | 6:00-8:00pm

West Conference Room, Sunnyvale City Hall

PLANNING COMMISSION 10/23

- PREFERENCE OPT 1 - SHORT DISTANCE PARKING, PLAZA, CLOSE TO DNTN
- USABILITY OF OUTDOOR SPACE
- LIKE ZNE, TIMBER STRUCTURE - ORGANIC
- FUTURE DEVELOP - GO UP
- REMOVE OLIVE
- DPS ACCESSIBILITY CONCERN
RESPONSE TIME
- LEAVE OLIVE OPEN
- OPTION 2 - MORE "CLASSIC"
- LIKE PLAZA - VISUAL CONNECT

- KID AREA OUTSIDE LIBRARY
- LIKE OPTION 1, TIMBER
STRUCTURE, WELL DESIGNED
STREET
- ENCOURAGE WALKING (PARKING BECK)
- LIKE PLAZA OPTION, DON'T
LIKE ARCH. CONTAINERS WOOD
STRUCTURE UNDER CONSTRUCTION
- PED. FRIENDLY - COVERED WALKWAYS
- TRAILS INSPIRE BUILT WALKWAYS
- ~~THE~~ DESIGN FOR IT NEEDS
- EXPOSED WOOD CONCERN - TREELSS
MAINTENANCE CONCERNS

- CONCERN ABOUT FRUIT TREES - RATS
- GREEN ROOFS!
- USE & PROGRAM OF OUTDOOR SPACE?
- DON'T LIKE PARKING DECK ON CAMINO REAL
- MORE TREES IN PLAZA
- LOOKS LIKE OFFICE PARKS - COMBINATION OF TRADITIONAL & MODERN..... LOOKS TOO MODERN
- INTRODUCE PUBLIC ART ACTIVATE PUBLIC SPACE LIVELY, NOT STATIC
- LIKE IDEA OF OLIVE CLOSED
- BOOK RETURN DROP OFF
- NEEDS TO BE WELCOMING... THESE ARE NOT WELCOMING

- KEEP DPS IN CURRENT LOCATION
- ROOM FOR EXPANSION

HERITAGE PRESERVATION COMMISSION

November 1, 2017 | 7:00-8:00pm

West Conference Room, Sunnyvale City Hall

- CITY HALL TO BE BUILT
IN FRONT OF EXISTING BLDG
- CAN YOU CAN CONSIDER TREES INSTEAD
OF PV ON THE EXISTING PARKING
- GINKGOS / CORK TREES / & OTHERS
SHOULD BE CONSIDERED
→ REVIEW IN REFINEMENT PHASE
- HEWLETT PACKARD BLDG
- OPEN SPACE → NEED AS MANY TREES
& BENCHES AS POSSIBLE

COMMISSION COMMENTS -

1. OPTION 1 - BLDG IS NOT PREFERRED*
 2. EV CHARGING SHOULD BE INCLUDED
 3. ARE BOTH COMPATIBLE W/ PROTECTING TREES
— YES —
 4. OPTION 2 BLDG - LOOKS LIKE HOSPITAL
 5. INGRESS/EGRESS FOR TRAFFIC
- TRAFFIC ANALYSIS A PART OF EIR
 6. THESE OPTIONS ARE RADICALLY
DIFFERENT FROM 2 YEARS AGO
 7. OPTION 1 - TOO OPEN IN BLDG
- TOO MUCH LIGHT
- SHOULD BE RE. THOUGHT
 - OPTION 2 - VERY 80's
- WHY NOT SPACE SHIP
- MORE TRAFFIC ON
SIDE STREETS
- TRAFFIC
ON SIDE
STREETS

- OPT 2 → 4-5 MIN WALKING IS UNSAFE
- DON'T DECREASE PARKING
- SIDE STREETS WILL BE CLOGGED + RESIDENTS WON'T LIKE
CONSIDER STRUCTURED PARKING
- OPT 1 : TOO MUCH PLAZA / CONCRETE
NEED MORE SOFT
- MORE LIKE HP
- GREEN ROOFS / OCCUPIABLE
- LIKE CURVE/LINEAR — BUT WANT MORE WOOD, NOT '80'S LOOK —
LOOK FORWARD INSTEAD OF BACK
- ARE WE ADDING SAFE BIKE LANES
FOR THE CAMPUS + LIBRARY