

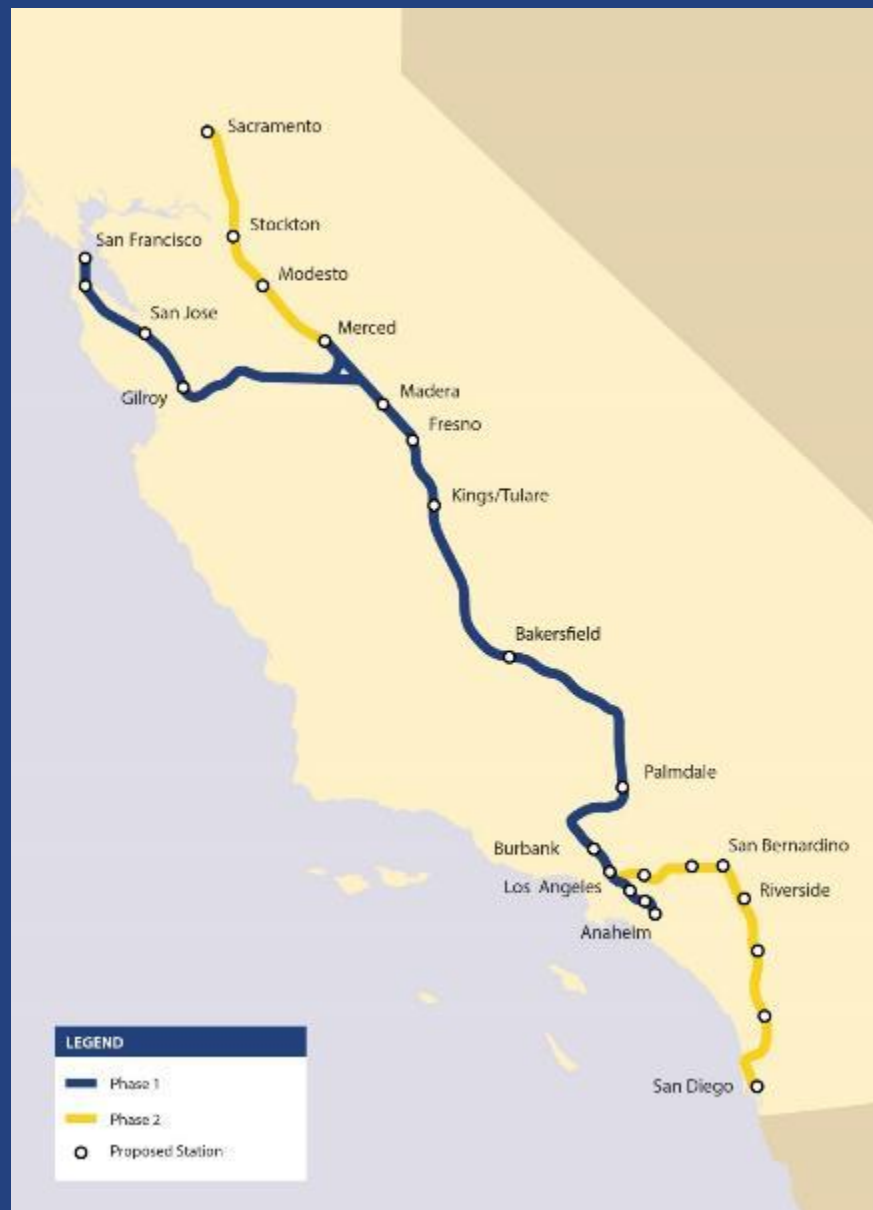


# **SAN FRANCISCO TO SAN JOSE PROJECT SECTION**

**Ben Tripousis  
Northern California Regional Director  
Sunnyvale City Council  
January 23, 2018**



# HIGH-SPEED RAIL: Connecting California



***Increase Mobility***



***Needed Alternative***



***Better Air Quality***

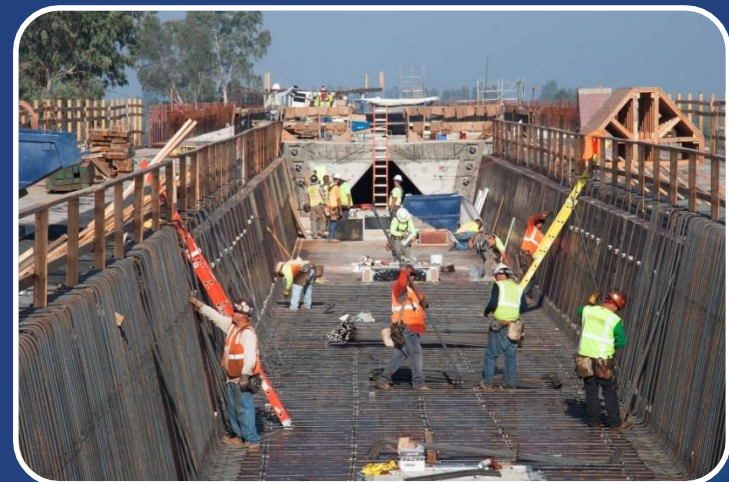


***Job Growth***

# High-speed Rail: It's Happening!



- Approximately 119 Miles Under Construction
- Madera to North of Bakersfield
- Dozens of Active Sites
- Over 1500 Craft Laborers Dispatched
- 100% of Steel/Concrete Generated for Demolition Recycled
- Hundreds of Acres of Habitat Land Preserved



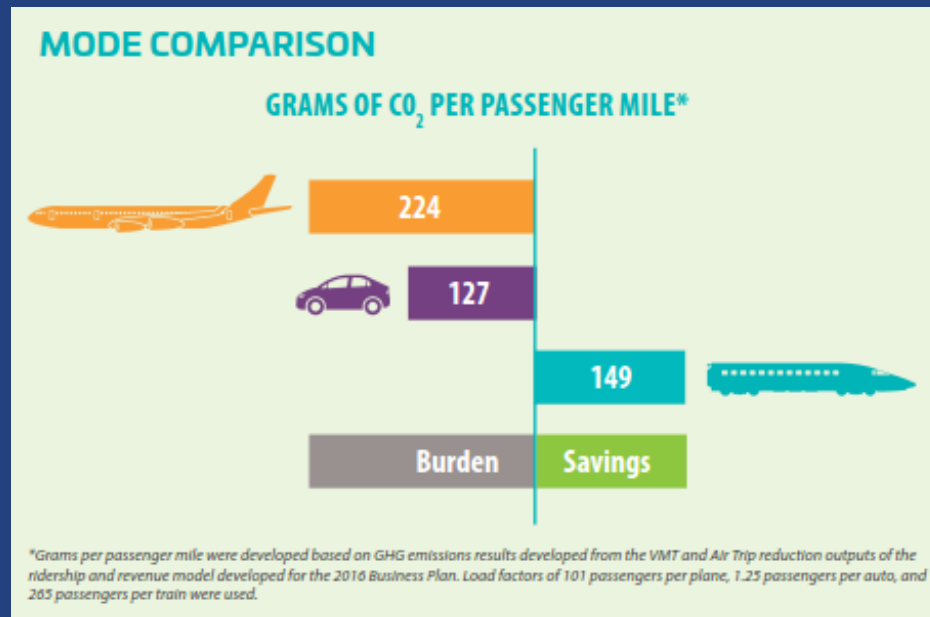
# Construction Update: 2017 Year In Review

---

<https://youtu.be/XaSPNUXx478>

# High-speed rail: A New Model For Infrastructure Delivery

- **Delivery Sets a New, Green Standard for Infrastructure**
  - » Operate with 100 Percent Renewable Energy
  - » Require All Steel And Concrete from Demolition and Construction is Recycled
  - » Invest in Clean Agricultural Equipment to Offset Emissions
  - » Require the Cleanest Equipment on Site
  - » Grade Separate Rail in Communities to Improve Safety And Access



# HIGH-SPEED RAIL: California Economic Impacts



**JOB-YEARS OF  
EMPLOYMENT**

**19,900 - 23,600**



**LABOR  
INCOME**

**\$1.38B - \$1.68B**



**ECONOMIC  
OUTPUT**

**\$3.5B - \$4.1B**

# HIGH-SPEED RAIL: Economic Output

## Indirect Effects

Concrete  
Steel  
Supplies  
Transport  
Computers  
Parts  
Office Supplies  
And more...



## Direct Effects

### Contractors

- Construction workers' salaries
- Manufacturing, production, construction

### Employees

- Salaries and other expenses



## Induced Effects

Housing  
Groceries  
Retail  
Recreation  
And more...





# FEDERAL INVESTMENT IN CALIFORNIA

---



- **Hundreds of Private Sector Firms Have Worked on the Program**
- **Thousands of Good Paying Jobs Have Put People Back to Work**
- **Billions of Dollars Have Infused the State's Economy**



# SAN FRANCISCO TO SAN JOSE SECTION OVERVIEW



# UPDATED ENVIRONMENTAL SCHEDULE

---

Spring 2016

Project  
Definition

Ongoing

Design &  
Technical  
Analysis  
Station  
Footprint  
Outreach

Summer 2018

Identify  
Preferred  
Alternative  
Board  
Concurrence  
Outreach

Winter 2019

Release Draft  
Environmental  
Document  
Outreach  
Public Hearing

Winter 2020

Final  
Environmental  
Document/  
Record of  
Decision

\*Preliminary/Subject to Change

# SAN FRANCISCO TO SAN JOSE: Overview

- 51-Mile Blended Corridor
- Smallest footprint of previously considered alternatives
  - » Fewer impacts to landowners
  - » Fewer environmental impacts
- Currently evaluating two alternatives
  - » Three Key Project Elements
  - » Common Project Elements
- Stations being studied
  - » San Francisco (4<sup>th</sup> and King)
  - » Millbrae (SFO)
  - » San Jose (Diridon)
- Elements of the alternatives can be “mixed and matched”



# SAN FRANCISCO TO SAN JOSE: Range of Alternatives



## Alternative B

- Light Maintenance Facility – Brisbane West
- Additional Passing Tracks
- Aerial Approach to Diridon—Long Viaduct

*Elements of the alternatives can be “mixed and matched”*



# OUTREACH UPDATE



# NEXT STEPS / FURTHER WORK

---

- In 2017, we held a total of 148 meetings, presentations, tours, workshops, and open houses aimed at informing and gathering input
- **Continue outreach along the corridor with additional public meetings in:**
  - » San Francisco and Millbrae on high-speed rail stations
  - » Brisbane on the location of a light maintenance facility
  - » San Mateo, Belmont, San Carlos, and Redwood City on potential passing tracks
  - » Santa Clara and San Jose on the aerial approach to Diridon Station
- **Upcoming Outreach**
  - » 1/23 – City of Sunnyvale
  - » 1/25 – LPMG Meeting (Caltrain-hosted)
  - » 2/22 – LPMG Meeting (Authority-hosted)

# ENVIRONMENTAL JUSTICE (EJ) OUTREACH

- Our 2018 Outreach Plan integrates EJ into the Authority's decision-making process
- To identify and address EJ matters, we continue to connect with City council, neighborhood groups, community working groups, technical working groups, and EJ organizations throughout the Peninsula Corridor.





# SUNNYVALE OUTREACH

---

- **How to Stay Connected with City of Sunnyvale**
  - » Stakeholders and Groups
  - » Upcoming Meetings or Events
  - » Community Working Group Participation
- **Related Projects in City of Sunnyvale**

# QUESTIONS & COMMENTS



# THANK YOU & STAY INVOLVED

---

**Website:** [www.hsr.ca.gov](http://www.hsr.ca.gov)

**Helpline:** 1-800-435-8670

**Email:** [san.francisco\\_san.jose@hsr.ca.gov](mailto:san.francisco_san.jose@hsr.ca.gov)

**Northern California Regional Office**  
California High-Speed Rail Authority  
100 Paseo De San Antonio, Suite 206  
San Jose, CA 95113  
[www.hsr.ca.gov](http://www.hsr.ca.gov)



[instagram.com/cahsra](https://www.instagram.com/cahsra)



[facebook.com/CaliforniaHighSpeedRail](https://facebook.com/CaliforniaHighSpeedRail)



[twitter.com/cahsra](https://twitter.com/cahsra)



[youtube.com/user/CAHighSpeedRail](https://youtube.com/user/CAHighSpeedRail)