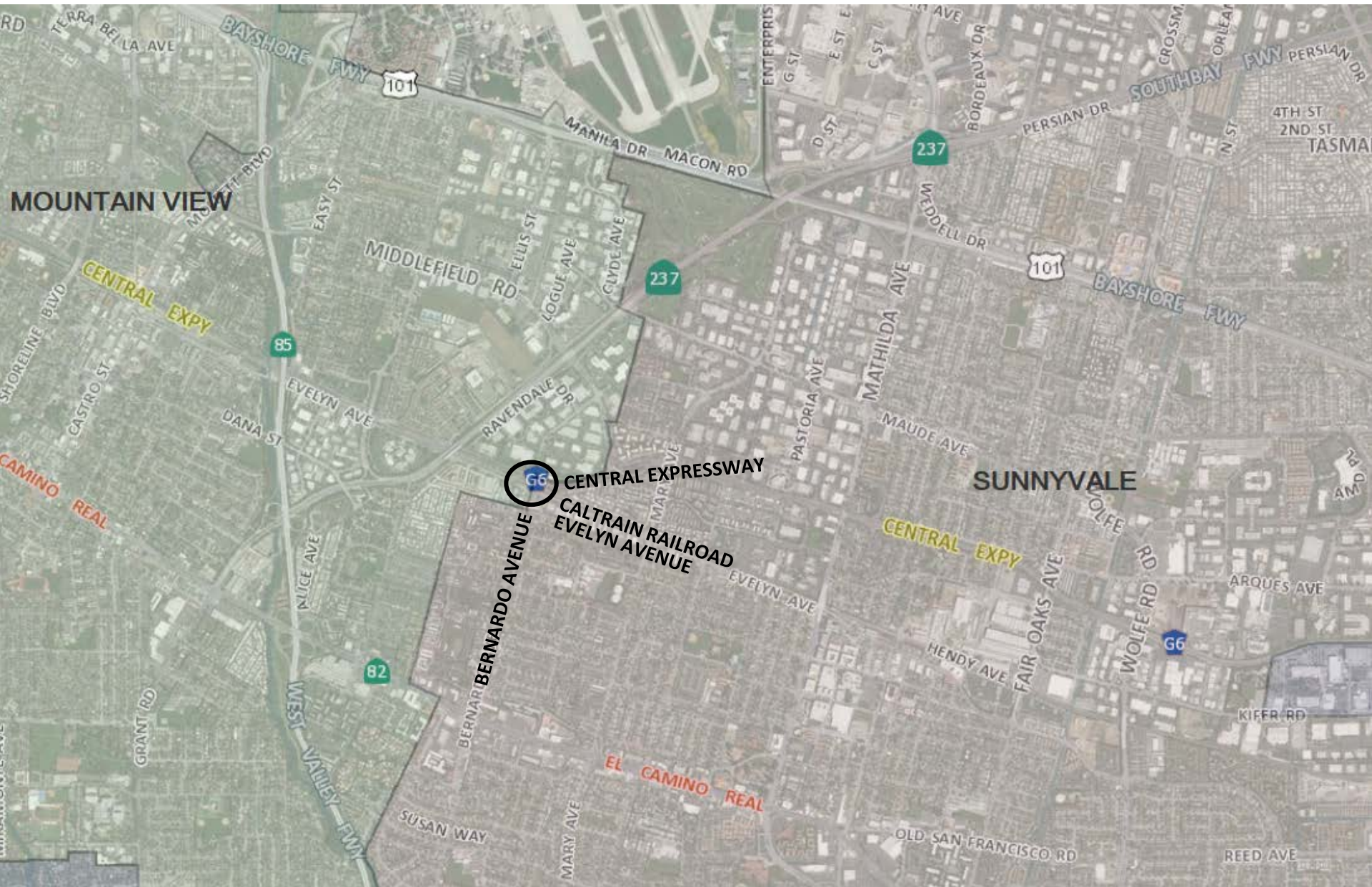
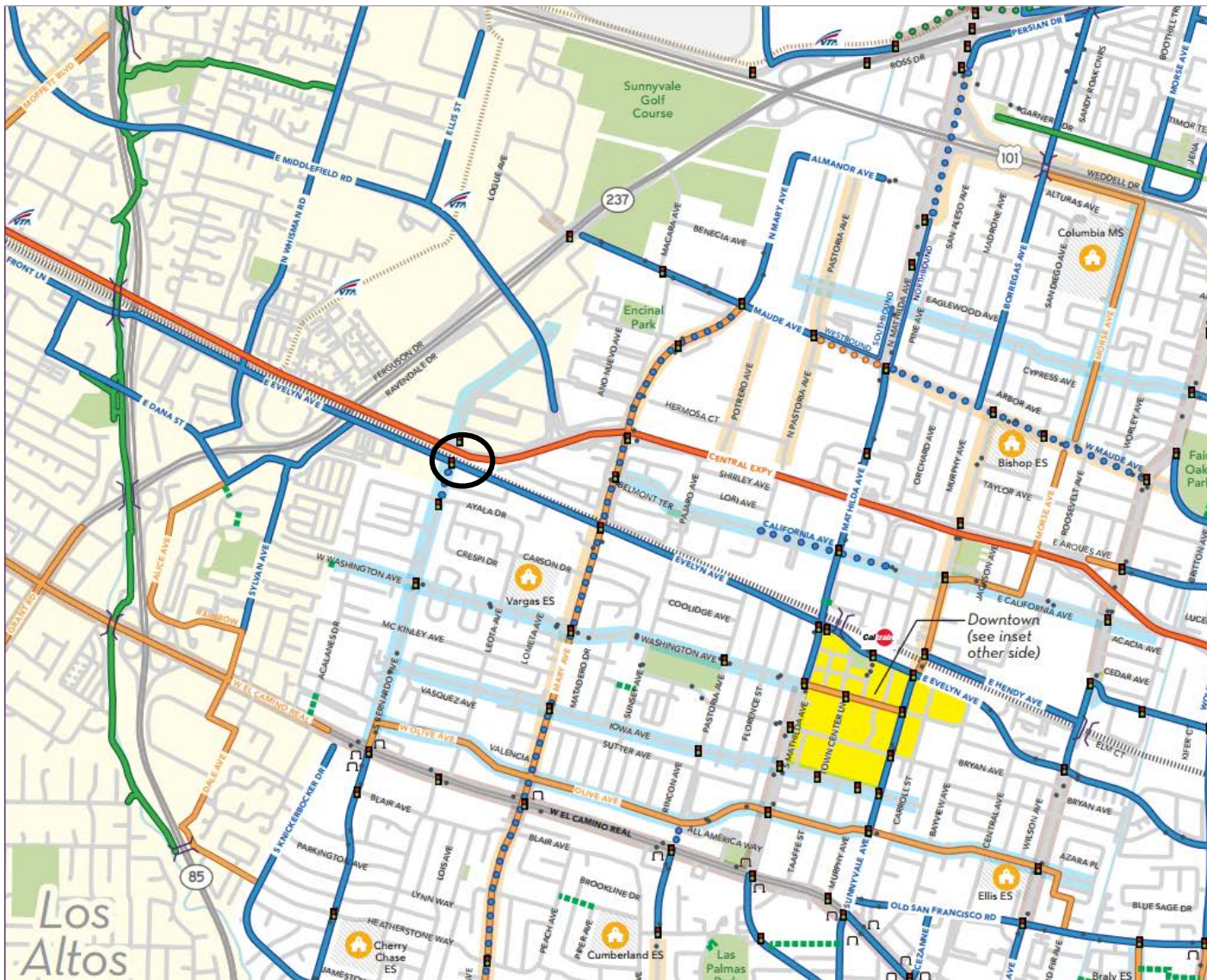


Bernardo Avenue Undercrossing Location Map



Bernardo Undercrossing Location within the Bicycle Network



LEGEND

Bikeways

Existing / Planned

..... Class I Unpaved

..... Class I Paved

Off-street trails, either paved or unpaved

..... Class II

On-street bike lane facilities that separate bicycles from vehicle traffic by paint

..... Class III
These routes do not provide any separation from vehicle traffic as bicycles may use the full lane when riding.

Expressways*

..... Public Access Path
Paths are small pathways or openings in walls or fences that often connect two neighborhoods by providing a more direct route for bicycle and pedestrians.

Bike/Ped Bridge

Bike Parking

Transit Rail Line

VTA Station

Caltrain Station

Transit Stop

Traffic Signal

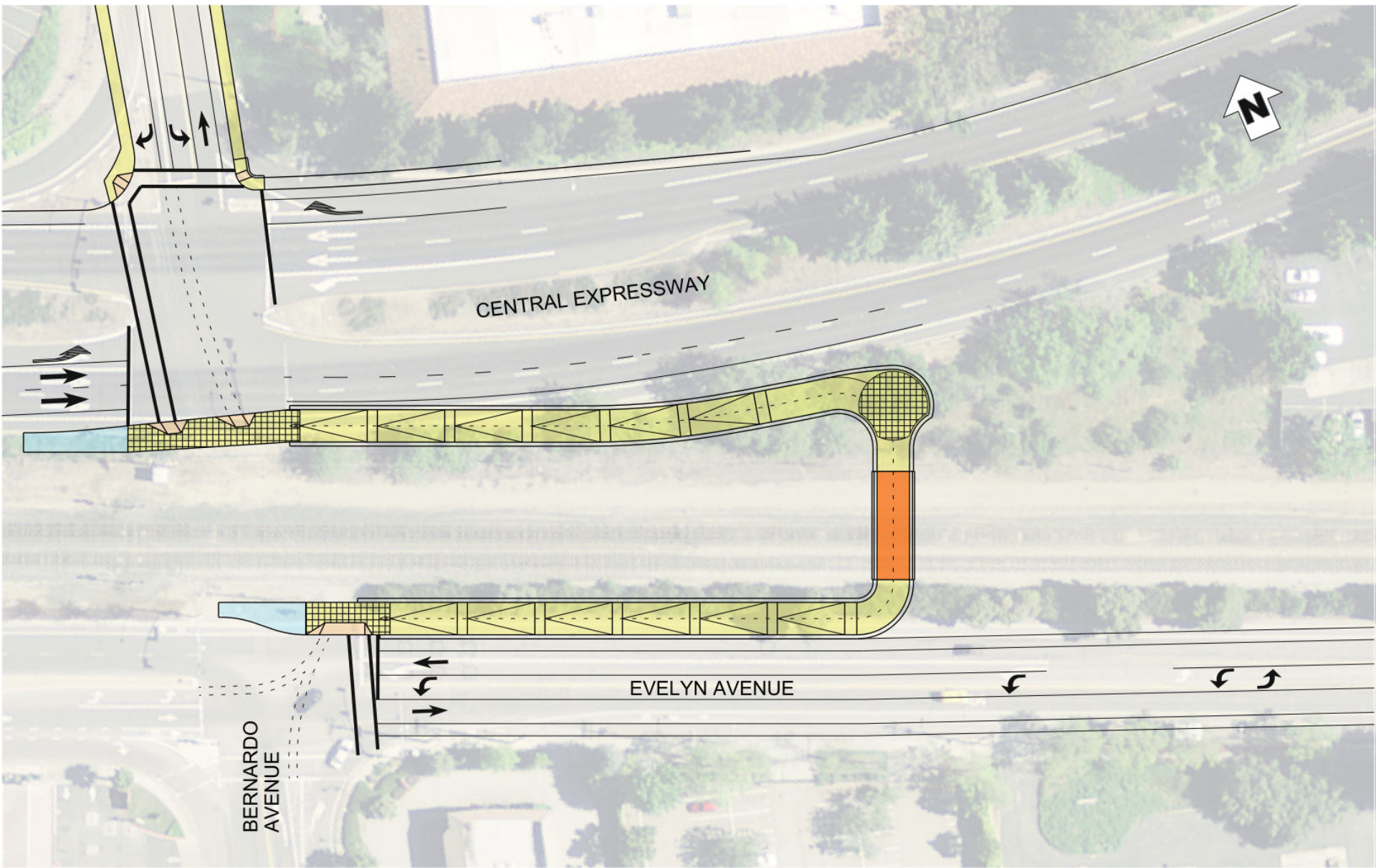
School

*Bicycles are permitted on all county expressways. The expressways generally carry high volumes of traffic at high speeds. Bicyclists are therefore advised to exercise caution. Although there are bicycle lanes on some of the expressways, the expressways should only be used by bicyclists with advanced skills.

Image:Sunnyvale Bike Map 2017

Bernardo Undercrossing under the Original Contract

(Preliminary Concept Drawing Subject to Change)



Bernardo Undercrossing under Amendment 1

(Preliminary Concept Drawing Subject to Change)

