

DATE OF SURVEY: SEPTEMBER 28, 2017
SITE NUMBER / NAME: SUNNYVALE 016
TYPE: EXISTING WOOD UTILITY POLE
SITE ADDRESS: SUNNYVALE, CA. 94085

I, TIMOTHY SCHAD, HEREBY CERTIFY THE GEODETIC COORDINATES AT THE CENTER OF THE EXISTING WOOD UTILITY POLE TO BE:

LATITUDE= 37° 22' 42.02" NORTH (NAD83) (37.378339° NORTH)
LONGITUDE= 122° 00' 29.22" WEST (NAD83) (122.007839° WEST)

GROUND ELEVATION= 57.0' NAVD83 (0.0' A.G.L.)
TOPOPOLE ELEVATION= 100.1' NAVD83 (43.1' A.G.L.)
CONDUCTOR ELEVATION (HIGHEST POINT)= 101.9' NAVD83 (44.9' A.G.L.)

THE ACCURACY STANDARDS FOR THIS CERTIFICATION ARE AS FOLLOWS:

GEODETIC COORDINATES: +/- FIFTEEN (15) FEET (NAD-83)
ELEVATIONS: +/- THREE (3) FEET (NAVD-88)

1. ALL LATITUDES AND LONGITUDES ARE NAD 83, ALL ELEVATIONS ARE NAVD 88 (UNLESS NOTED OTHERWISE).
2. ALL BOUNDARY INFORMATION SHOWN HEREON HAS BEEN COMPILED FROM RECORD DATA. THIS IS NOT A BOUNDARY SURVEY.
3. DATE OF FIELD SURVEY SEPTEMBER 28, 2017.
4. NO PRELIMINARY TITLE REPORT HAS BEEN PROVIDED. ANY EASEMENTS OR OTHER TITLE RELATED ISSUES NOT INCLUDED IN SAID REPORT ARE PART OF THE TITLE PROCESS MAY OR MAY NOT HAVE BEEN ADDRESSED. TIMOTHY F. SCHAD, L.S. ACCEPTS NO RESPONSIBILITY OR LIABILITY FOR BOUNDARY OR TITLE ITEMS ADDRESSED HEREON. THIS IS NOT A BOUNDARY SURVEY.

TIMOTHY SCHAD, L.S.
10699 ROUND VALLEY RD.
GRASS VALLEY, CA. 95949
PHONE: (530) 271-7477
FAX: (530) 271-7377

PROJECT NO:

DRAWN BY:

CHECKED BY:

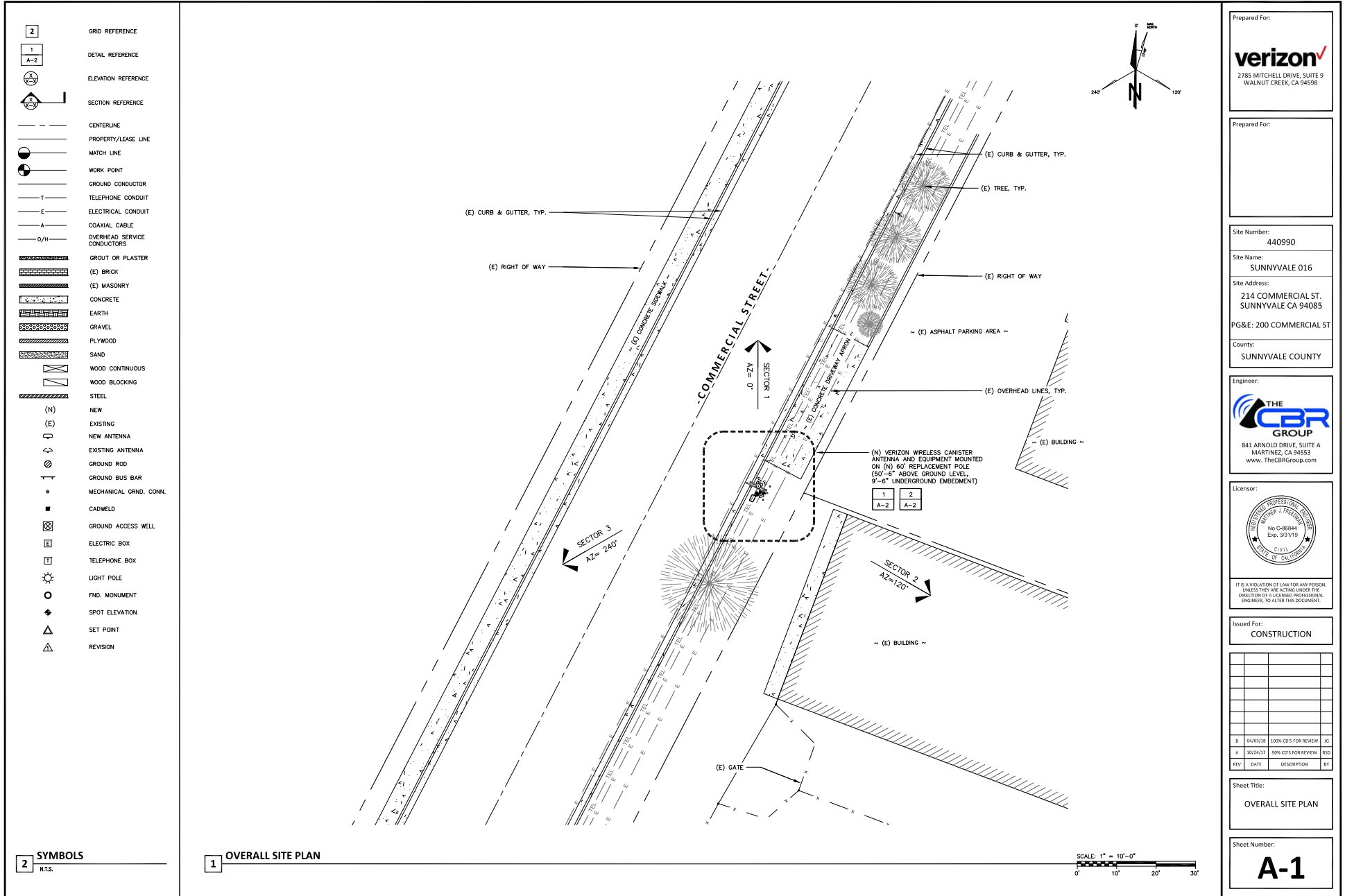
[illegible]

IT IS A VIOLATION OF LAW FOR ANY PERSON, UNLESS THEY ARE ACTING UNDER THE DIRECTION OF A LICENSED PROFESSIONAL ENGINEER, TO ALTER THIS DOCUMENT.

SUNNYVALE 016
SANTA CLARA COUNTY
SUNNYVALE, CA. 94085
EXISTING UTILITY POLE
ADJACENT TO APN:205-35-005

SHEET TITLE
UTILITY POLE EXHIBIT

SHEET NUMBER
LS-1



Prepared For:

verizon
2785 MITCHELL DRIVE, SUITE 9
WALNUT CREEK, CA 94598

Prepared For:

Site Number:
440990

Site Name:
SUNNYVALE 016

Site Address:
214 COMMERCIAL ST.
SUNNYVALE CA 94085

PG&E: 200 COMMERCIAL ST

County:
SUNNYVALE COUNTY

Engineer:

THE CBR GROUP
841 ARNOLD DRIVE, SUITE A
MARTINEZ, CA 94553
www.TheCBRGroup.com

Licenser:



IT IS A VIOLATION OF LAW FOR ANY PERSON, UNLESS THEY ARE ACTING UNDER THE DIRECTION OF A LICENSED PROFESSIONAL ENGINEER, TO ALTER THIS DOCUMENT.

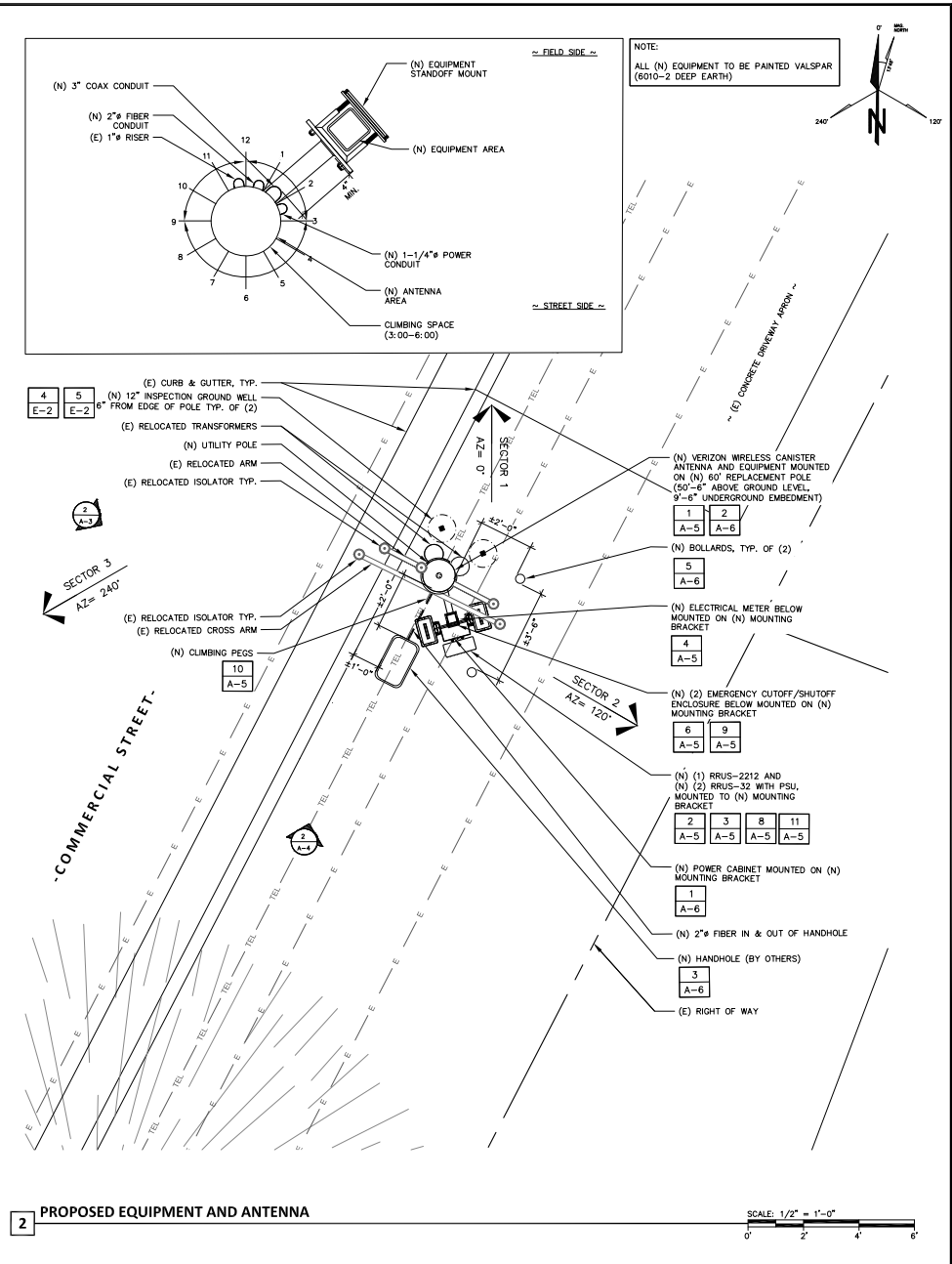
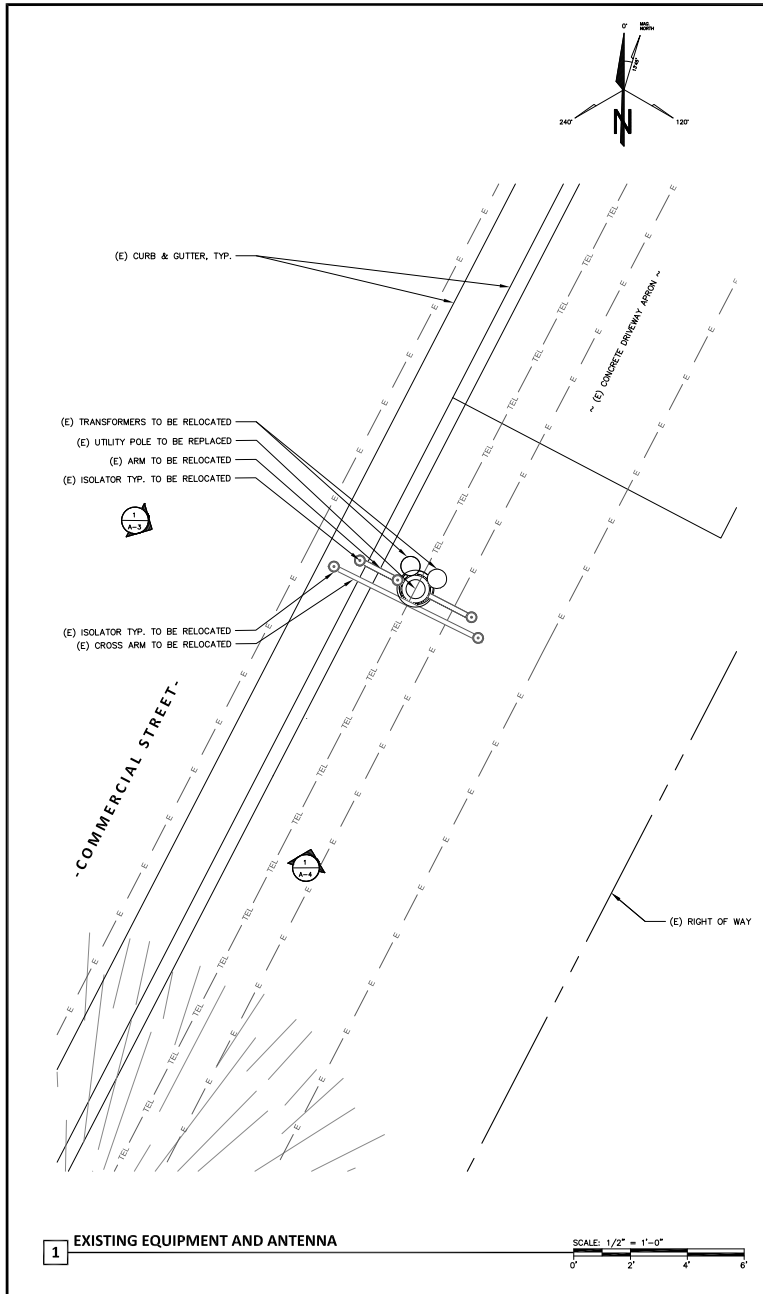
Issued For:
CONSTRUCTION

REV	DATE	DESCRIPTION	BY
B	04/03/18	100% CD'S FOR REVIEW	JG
A	10/24/17	90% CD'S FOR REVIEW	RSD

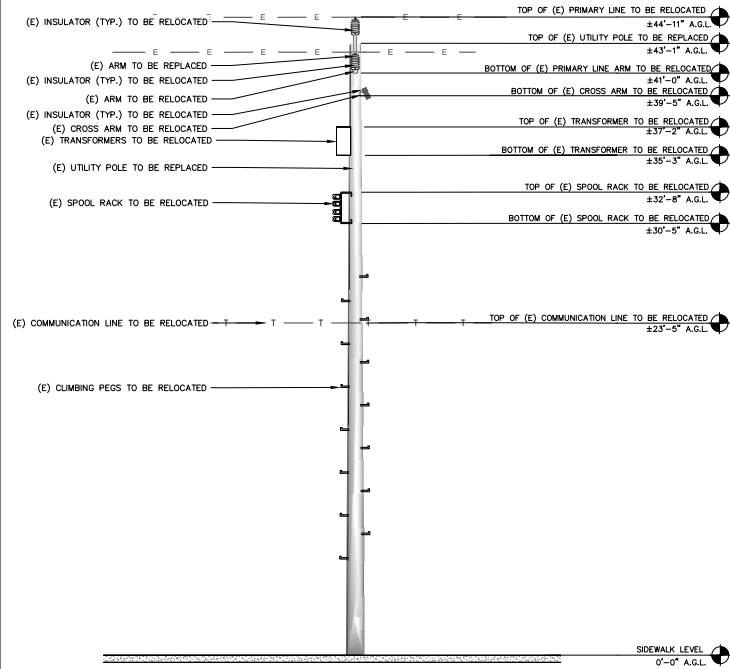
Sheet Title:
OVERALL SITE PLAN

Sheet Number:

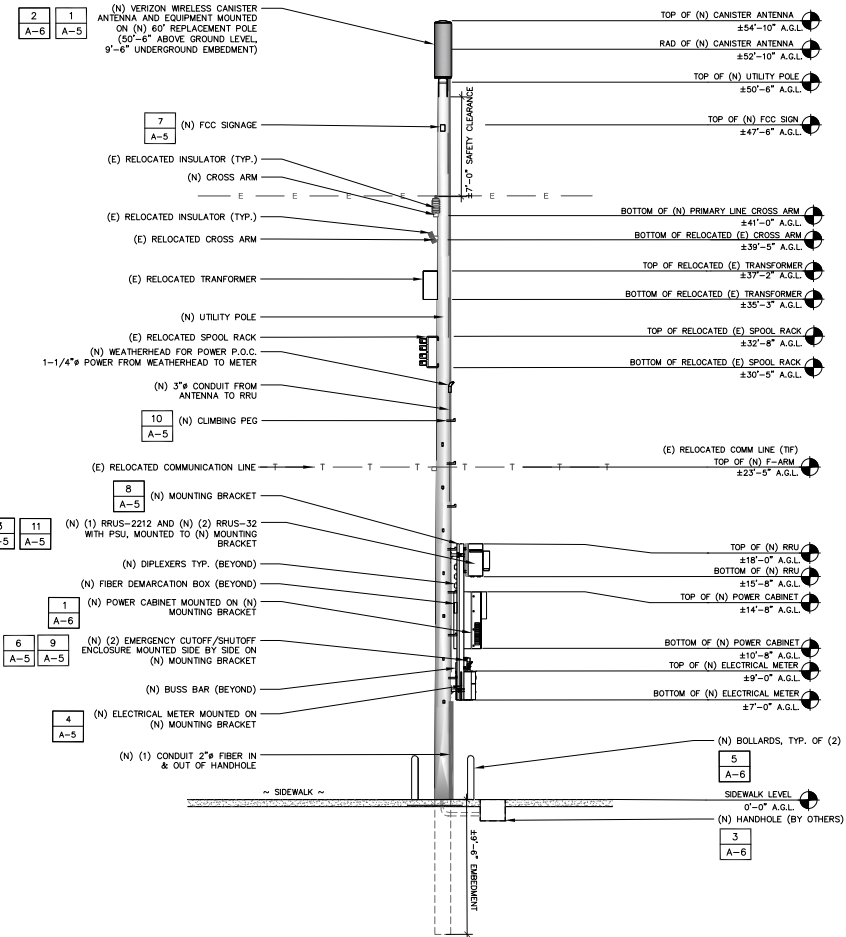
A-1



NOTE:
ALL (N) EQUIPMENT TO BE PAINTED VALSPAR
(6010-2 DEEP EARTH)



1 EXISTING NORTHWEST ELEVATION



2 PROPOSED NORTHWEST ELEVATION

Prepared For:

verizon
2785 MITCHELL DRIVE, SUITE 9
WALNUT CREEK, CA 94598

Prepared For:

Site Number:

440990

Site Name:

SUNNYVALE 016

Site Address:

214 COMMERCIAL ST.
SUNNYVALE CA 94085

PG&E: 200 COMMERCIAL ST

County:

SUNNYVALE COUNTY

Engineer:

THE CBR GROUP
841 ARNOLD DRIVE, SUITE A
MARTINEZ, CA 94553
www.TheCBRGroup.com

Licenser:

THE CBR GROUP
No. C-68844
Exp. 3/31/19
CIVIL
STATE OF CALIFORNIA

IT IS A VIOLATION OF LAW FOR ANY PERSON, UNLESS THEY ARE ACTING UNDER THE DIRECTION OF A LICENSED PROFESSIONAL ENGINEER, TO ALTER THIS DOCUMENT.

Issued For:

CONSTRUCTION

REV	DATE	DESCRIPTION	BY
B	04/03/18	100% CD'S FOR REVIEW	JG
A	10/24/17	90% CD'S FOR REVIEW	RSD

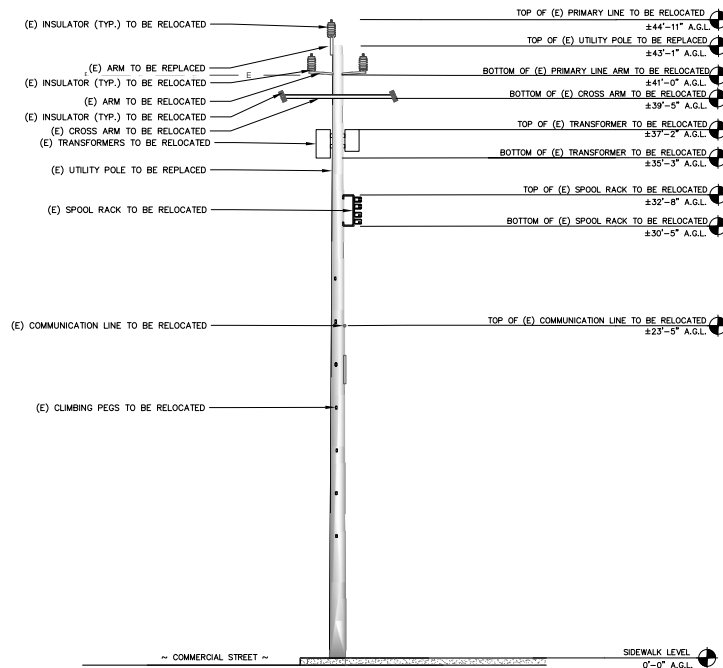
Sheet Title:

EXISTING AND PROPOSED
NORTHWEST ELEVATIONS

Sheet Number:

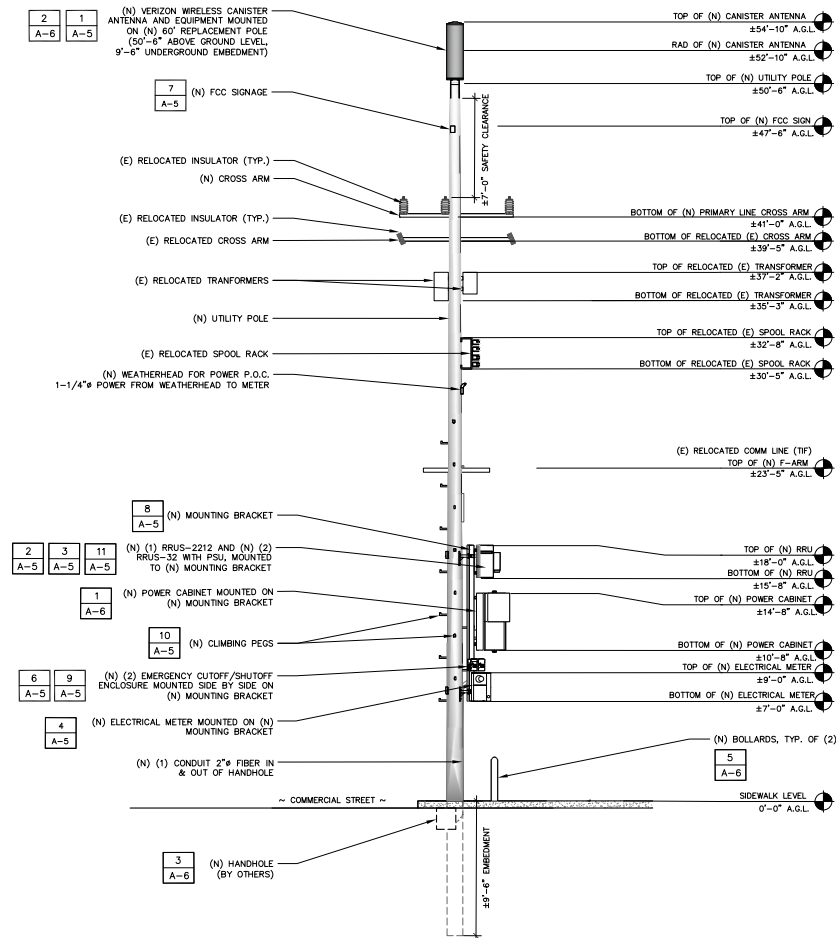
A-3

NOTE:
ALL (N) EQUIPMENT TO BE PAINTED VALSPAR
(6010-2 DEEP EARTH)



1 EXISTING SOUTHWEST ELEVATION

SCALE: 1/4" = 1'-0"
0' 2' 4' 8' 12'



2 PROPOSED SOUTHWEST ELEVATION

SCALE: 1/4" = 1'-0"
0' 2' 4' 8' 12'

Prepared For:

verizon
2785 MITCHELL DRIVE, SUITE 9
WALNUT CREEK, CA 94598

Prepared For:

Site Number:

440990

Site Name:
SUNNYVALE 016

Site Address:
214 COMMERCIAL ST.
SUNNYVALE CA 94085

PG&E: 200 COMMERCIAL ST

County:

SUNNYVALE COUNTY

Engineer:

THE CBR GROUP
841 ARNOLD DRIVE, SUITE A
MARTINEZ, CA 94553
www.TheCBRGroup.com

Licenser:



IT IS A VIOLATION OF LAW FOR ANY PERSON, UNLESS THEY ARE ACTING UNDER THE DIRECTION OF A LICENSED PROFESSIONAL ENGINEER, TO ALTER THIS DOCUMENT.

Issued For:

CONSTRUCTION

REV	DATE	DESCRIPTION	BY
B	04/01/18	100% CD'S FOR REVIEW	JG
A	10/24/17	90% CD'S FOR REVIEW	RSD

Sheet Title:

EXISTING AND PROPOSED
SOUTHWEST ELEVATIONS

Sheet Number:

A-4

SHUTDOWN DISCONNECT SWITCH

MANUFACTURER: CUE DEE
MODEL/PROD NO.: 7294
WEIGHT: 25.0 LB.
OR APPROVED EQUIVALENT

GENERAL DUTY SAFETY SWITCHES
VISIBLE BLADE TYPE
30 AMPERE
ENCLOSURE - NEMA TYPE 3R RAINPROOF

SHUTDOWN DISCONNECT BOX

MANUFACTURER: COMSCOPE
MODEL #: CB1923-4310
DIMENSIONS: 4.6" x 1.9" x 4.6"
WEIGHT: 28 GRAMS (2.6 LBS)
OR APPROVED EQUIVALENT

OUTSIDE PANEL DOOR SHOWING
DISCONNECT SWITCH ID ON 2"x6" PLAQUE AND
SHUT DOWN PROTOCOL ON 6"x7" LABEL

RRUS-2212 DETAIL

MANUFACTURER: ERICSSON
MODEL: RRUS-2212
DEPTH: 160 mm / 6.3 in.
HEIGHT: 420 mm / 16.54 in.
WIDTH: 342 mm / 13.47 in.
WEIGHT: 21.5 kg / 47.4 lb.
FREQUENCY: REFER TO RF DATA SHEET

NOTE:
CONTRACTOR TO INPUT SITE ID /
SITE NAME / MARKET ID

TRIPLE RRU SUPPORT

STEP: POLE 5/8 X 10 INCH GALVANIZED
HARDWARE 506125
ARRIS ITEM: 002971
QUANTITY: 13
WEIGHT: 0.900 LBS. / EA
<http://www.arrisstore.com/product.php?pid=002971>

DESCRIPTION:
POLE STEPS ARE USED ON WOOD POLES WHERE FREQUENT ACCESS TO POLE MOUNTED EQUIPMENT IS REQUIRED. FLAT DRIVING SURFACE AND SHARP POINT EASE INSTALLATION.
FITTER-DRIVE THREAD PERMITS REMOVAL WITH A WRENCH. HOT-DIP GALVANIZED FOR CORROSION RESISTANCE. NOTCHED MARK ON STEP INDICATES PROPER DRIVING DEPTH.
WEIGHT PER 100. 99 LBS.

PERMANENT POLE STEPPING

TEMPORARY POLE STEPPING

SCALE: N.T.S.

EQUIPMENT MOUNT DETAIL

WEIGHT: 34LBS
PAINT: VALSPAR (6010-2 DEEP EARTH)
LOAD CAPACITY: 1,500LBS

MEXSL DESIGN GROUP
1300 NORTH CALIFORNIA BLVD.
WALNUT CREEK, CA 94596
(510) 500-9999
OR APPROVED EQUIVALENT

SCALE: N.T.S.

DIPLEXER DETAIL

U214 TB MTB - SOCKET
ONLY/SELF-CONTAINED
SINGLE METER PROTECTION
SURFACE MOUNT
TOP OR BOTTOM LOAD EXIT
TYPE 3R CONSTRUCTION
SNAP TYPE SEALING RING
PADLOCK PROVISION
RING STYLE
UL 414, COMPLIES WITH
ANSI C12.7

OVERALL DIMENSIONS:
HEIGHT: 24"
WIDTH: 20"
DEPTH: 4-5/8"

SCALE: N.T.S.

RRUS-32 DETAIL

MANUFACTURER: AMPHENOL
DIMENSIONS: 48" x 14.6"
WEIGHT: 53 LBS

SCALE: N.T.S.

POLE STEPPING DETAILS

STEP: POLE 5/8 X 10 INCH GALVANIZED
HARDWARE 506125
ARRIS ITEM: 002971
QUANTITY: 13
WEIGHT: 0.900 LBS. / EA
<http://www.arrisstore.com/product.php?pid=002971>

DESCRIPTION:
POLE STEPS ARE USED ON WOOD POLES WHERE FREQUENT ACCESS TO POLE MOUNTED EQUIPMENT IS REQUIRED. FLAT DRIVING SURFACE AND SHARP POINT EASE INSTALLATION.
FITTER-DRIVE THREAD PERMITS REMOVAL WITH A WRENCH. HOT-DIP GALVANIZED FOR CORROSION RESISTANCE. NOTCHED MARK ON STEP INDICATES PROPER DRIVING DEPTH.
WEIGHT PER 100. 99 LBS.

PERMANENT POLE STEPPING

TEMPORARY POLE STEPPING

SCALE: N.T.S.

CAUTION SIGN

CAUTION

Transmitting Antenna(s)

Radio frequency fields beyond this point MAY EXCEED the FCC Occupational exposure limit. Obey all posted signs and site guidelines.
Call Verizon Wireless at 1-800-264-6620 prior working beyond this point.

STATE: _____ SWITCH: _____
SITE ID: _____
SECTOR/NODE: _____
RSI 6404.5D

SCALE: N.T.S.

U214 MTB METER MAIN

U214 TB MTB - SOCKET
ONLY/SELF-CONTAINED
SINGLE METER PROTECTION
SURFACE MOUNT
TOP OR BOTTOM LOAD EXIT
TYPE 3R CONSTRUCTION
SNAP TYPE SEALING RING
PADLOCK PROVISION
RING STYLE
UL 414, COMPLIES WITH
ANSI C12.7

OVERALL DIMENSIONS:
HEIGHT: 24"
WIDTH: 20"
DEPTH: 4-5/8"

SCALE: N.T.S.

ANTENNA DETAIL

MANUFACTURER: ERICSSON
MODEL: RRUS-32
DEPTH: 178 mm / 7.0 in.
LENGTH: 690 mm / 27.2 in.
WIDTH: 306 mm / 12.1 in.
WEIGHT: 23 kg / 60.0 lb.
(EXCLUDING HARDWARE)
FREQUENCY: REFER TO RF DATA SHEET

SCALE: N.T.S.

Prepared For:

verizon

2785 MITCHELL DRIVE, SUITE 9
WALNUT CREEK, CA 94598

Prepared For:

Site Number: 440990

Site Name: SUNNYVALE 016

Site Address: 214 COMMERCIAL ST.
SUNNYVALE CA 94085

PG&E: 200 COMMERCIAL ST

County: SUNNYVALE COUNTY

Engineer:

THE CBR GROUP

841 ARNOLD DRIVE, SUITE A
MARTINEZ, CA 94553
www.TheCBRGroup.com

Licenser:

IT IS A VIOLATION OF LAW FOR ANY PERSON, UNLESS THEY ARE ACTING UNDER THE DIRECTION OF A LICENSED PROFESSIONAL ENGINEER, TO ALTER THIS DOCUMENT.

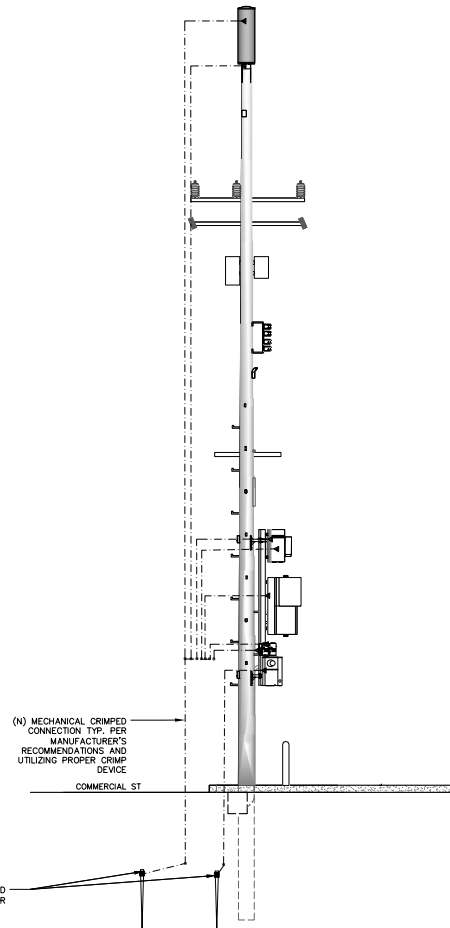
Issued For: CONSTRUCTION

REV	DATE	DESCRIPTION	BY
B	04/03/18	100% CD'S FOR REVIEW	JS
A	10/24/17	90% CD'S FOR REVIEW	ESD

Sheet Title: EQUIPMENT AND CONSTRUCTION DETAILS

Sheet Number: **A-5**

	<p>WB3X-MKS-01 UTILITY POLE MOUNTING KIT FOR CYLINDRICAL ANTENNAS</p>	<p>NOT USED</p> <p>SCALE: N.T.S.</p> <p>8</p>	<p>Prepared For:</p> <p>verizon 2785 MITCHELL DRIVE, SUITE 9 WALNUT CREEK, CA 94598</p> <p>Prepared For:</p> <p>Site Number: 440990</p> <p>Site Name: SUNNYVALE 016</p> <p>Site Address: 214 COMMERCIAL ST. SUNNYVALE CA 94085</p> <p>PG&E: 200 COMMERCIAL ST</p> <p>County: SUNNYVALE COUNTY</p> <p>Engineer: THE CBR GROUP 841 ARNOLD DRIVE, SUITE A MARTINEZ, CA 94553 www.TheCBRGroup.com</p> <p>Licenser: CIVIL ENGINEER PROFESSIONAL LICENSE No C-48864 Evg. 3/31/19 CIVIL STATE OF CALIFORNIA</p> <p>IT IS A VIOLATION OF LAW FOR ANY PERSON, UNLESS THEY ARE ACTING UNDER THE DIRECTION OF A LICENSED PROFESSIONAL ENGINEER, TO ALTER THIS DOCUMENT.</p> <p>Issued For: CONSTRUCTION</p> <table border="1"> <tr> <th>REV</th> <th>DATE</th> <th>DESCRIPTION</th> <th>BY</th> </tr> <tr> <td>B</td> <td>04/03/18</td> <td>100% CD'S FOR REVIEW</td> <td>JS</td> </tr> <tr> <td>A</td> <td>10/24/17</td> <td>90% CD'S FOR REVIEW</td> <td>ESD</td> </tr> </table> <p>Sheet Title: EQUIPMENT AND CONSTRUCTION DETAILS</p> <p>Sheet Number: A-6</p>	REV	DATE	DESCRIPTION	BY	B	04/03/18	100% CD'S FOR REVIEW	JS	A	10/24/17	90% CD'S FOR REVIEW	ESD
REV	DATE	DESCRIPTION	BY												
B	04/03/18	100% CD'S FOR REVIEW	JS												
A	10/24/17	90% CD'S FOR REVIEW	ESD												
<p>PSU DETAIL</p>	<p>TRENCH DETAIL</p>	<p>WB3X-MKS-01 ANTENNA MOUNT DETAIL</p> <p>SCALE: N.T.S.</p> <p>5</p>	<p>SCALE: N.T.S.</p> <p>2</p>												
<p>FIBER DEMARCATION BOX DETAIL</p>	<p>HANDHOLE DETAIL (BY OTHERS)</p>	<p>POWER CABINET (CUBE-SC104NNN3) DETAIL</p>	<p>SCALE: N.T.S.</p> <p>6</p>												



1 POLE GROUNDING DIAGRAM

POWER AND TELCO CONNECTIONS:

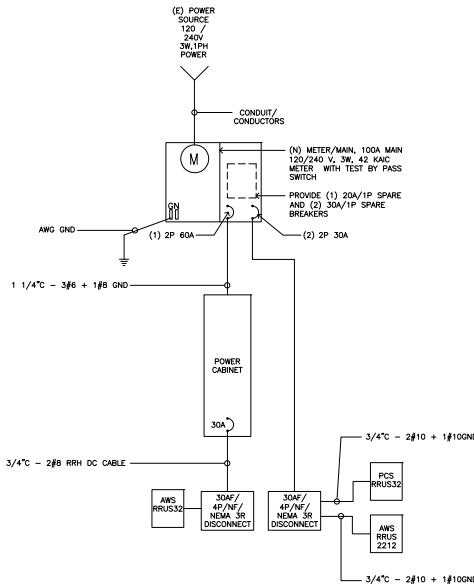
1. POWER AND TELCO POINT OF CONNECTION AND ROUTE ARE PRELIMINARY AND SUBJECT TO CHANGE TO CONFIRMATION BY THE UTILITY COMPANIES RESPECTIVELY.
2. CONTRACTOR SHALL COORDINATE WITH UTILITY COMPANY FOR FINAL AND EXACT WORK/MATERIALS REQUIREMENTS AND CONSTRUCT TO UTILITY ENGINEERING PLAN AND SPECIFICATIONS ONLY WHERE APPLICABLE PER PROJECT SCOPE OF WORK.
3. CONTRACTOR SHALL FURNISH AND INSTALL CONDUIT, PULL WIRE, CABLE PULL BOXES, CONCRETE ENCASMENT OF CONDUIT, TRANSFORMER PAD, BARRIERS, RISER TRENCHING, BACK FILL AND UTILITY FEES, AND INCLUDE REQUIREMENTS IN THE SCOPE.
4. CONTRACTOR SHALL LABEL ALL MAIN DISCONNECT SWITCHES AS REQUIRED BY CODE.

POWER AND TELCO CONNECTIONS:

1. SUBCONTRACTOR SHALL PROVIDE METER WITH DIST. PANEL AND BREAKERS FOR POWER TO THE BTS UNITS AND THE BTS/UTILITY CABINET.
2. ALL SERVICE EQUIPMENT AND INSTALLATIONS SHALL COMPLY WITH THE N.E.C. AND UTILITY COMPANY AND LOCAL CODE REQUIREMENTS.
3. SUBCONTRACTOR SHALL PROVIDE ELECTRICAL SERVICE ENTRANCE EQUIPMENT WITH FAULT CURRENT RATINGS GREATER THAN THE AVAILABLE FAULT CURRENT FROM THE POWER UTILITY.
4. FIELD ROUTE CONDUIT TO CABINETS AS REQUIRED.
5. MAXIMUM ONE WAY CIRCUIT RUN NOT TO EXCEED 75 FEET.

GENERAL ELECTRICAL NOTES:

1. PROVIDE ALL ELECTRICAL WORK & MATERIALS AS SHOWN ON THE DWGS, AS CALLED FOR HEREIN, & AS IS NECESSARY TO FURNISH A COMPLETE INSTALLATION.
2. THE INSTALLATION SHALL CONFORM TO THE REQUIREMENTS OF THE CURRENT ADOPTED CALIFORNIA ELECTRICAL CODE, STATE OF CALIFORNIA TITLE24, ALL OTHER APPLICABLE CODES AND ORDINANCES & THE REQUIREMENTS OF THE FIRE MARSHALL. ALL EQUIPMENT & WIRING SHALL BEAR THE APPROVAL STAMP OF UNDERWRITERS LABORATORY (UL) OR AN APPROVED TESTING LABORATORY, PAYMENT FOR ALL INSPECTION FEES AND PERMITS ARE PART OF THIS CONTRACT.
3. THE CONTRACTOR SHALL BE RESPONSIBLE FOR THE SAFETY AND GOOD CONDITION OF ALL MATERIALS & EQUIPMENT FOR THE ENTIRE INSTALLATION & UNIT COMPLETION OF WORK, DIRECT & MAINTAIN APPROVED & SUITABLE BARRIERS, PROTECTIVE DEVICES & WARNING SIGNS, BE FULLY RESPONSIBLE FOR ANY LOSS OR INJURY TO PERSONS OR PROPERTY RESULTING FROM NEGLIGENCE AND/OR ENFORCEMENT OF ALL SAFETY PRECAUTIONS & WARNINGS.
4. COORDINATE THE ELECTRICAL INSTALLATION WITH ALL OTHER TRADES.
5. ALL SAW CUTTING, TRENCHING, BACK FILLING & PATCHING SHALL BE PART OF THIS CONTRACT.
6. FINALIZE ALL ELECTRICAL SERVICE ARRANGEMENTS, INCLUDING VERIFICATION OF LOCATIONS, DETAILS, COORDINATION OF THE INSTALLATION & PAYMENT OF ACCRUED CHARGES WITH LOCAL POWER COMPANY, VERIFY LOCATION FOR FACILITIES & DETAILS WITH POWER UTILITY, IN ADDITION TO THE REQUIREMENTS SHOWN IN THE CONTRACT DOCUMENTS, WORK SHALL COMPLY WITH CONSTRUCTION STANDARDS & SERVICE REQUIREMENTS OF THE RESPECTIVE UTILITIES, INCLUDING ANY SUPPLEMENTAL DWGS ISSUED & SHALL BE SUBJECT TO APPROVAL OF THESE UTILITIES.
7. ALL WIRING SHALL BE COPPER, INSULATION FOR BRANCH CIRCUIT CONDUCTORS SHALL BE TYPE "THWN" CONDUCTORS LARGER AND #6 AWG MAY BE TYPE "THWN" OR "THWN".
8. PROVIDE CONDUIT SEALS FOR ALL CONDUITS PENETRATING WEATHERPROOFING OR WEATHERPROOF ENCLOSURE ENVELOPE. MASTIC SEAL ALL CONDUIT OPENING PENETRATIONS COMPLETELY WATERIGHT.
9. UNLESS SHOWN OTHERWISE, FUSED DISCONNECT SWITCHES SHALL BE PROVIDED WITH LOW-PEAK, 5/8" VOLTAGE ELEMENT FUSES SIZED TO EQUIPMENT NAMEPLATE FUSE CURRENT RATING. MOTOR STARTERS SHALL BE PROVIDED WITH SIMILARLY SIZED FUSIBLE ELEMENTS, SWITCHES AND OTHER OUTDOOR EQUIPMENT SHALL BE RATED NEMA 3R AND/OR UL LISTED FOR WET ENVIRONMENT.
10. THE CONTRACTOR SHALL BE RESPONSIBLE FOR TESTING THE GROUNDING SYSTEM AND ENSURING A 5 OHM OR LESS GROUNDING PATH, ADDITIONAL GROUND RODS AND/OR CHEMICAL ROD SYSTEM SHALL BE USED TO ACHIEVE THIS REQUIREMENT.



LOAD CALCULATIONS - VERIZON WIRELESS

EXISTING LOAD: 0 AMPS
NEW LOAD: 10.0 AMPS MAX.
NEW TOTAL LOAD: 10.0 AMPS MAX.

POWER AND TELCO DESIGN IS BASED ON INITIAL SITE VISIT.

CONTRACTOR SHALL OBTAIN CURRENT UTILITY COORDINATOR PLANS PRIOR TO START OF CONSTRUCTION.

AVAILABLE FAULT CURRENT PER UTILITY.

NOTE: CONTRACTOR TO CHECK WITH UTILITY TO ENSURE ELECTRICAL METER IS BRACED FOR ACTUAL FAULT CURRENT.

2 SINGLE LINE DIAGRAM
N.T.S.

Prepared For:

verizon
2785 MITCHELL DRIVE, SUITE 9
WALNUT CREEK, CA 94598

Prepared For:

Site Number:

440990

Site Name:
SUNNYVALE 016

Site Address:
214 COMMERCIAL ST.
SUNNYVALE CA 94085

PG&E: 200 COMMERCIAL ST

County:

SUNNYVALE COUNTY

Engineer:

THE CBR GROUP
841 ARNOLD DRIVE, SUITE A
MARTINEZ, CA 94553
www.TheCBRGroup.com

Licenser:



IT IS A VIOLATION OF LAW FOR ANY PERSON, UNLESS THEY ARE ACTING UNDER THE DIRECTION OF A LICENSED PROFESSIONAL ENGINEER, TO ALTER THIS DOCUMENT.

Issued For:

CONSTRUCTION


REV	DATE	DESCRIPTION	BY
B	04/03/18	100% CD'S FOR REVIEW	JS
A	10/24/17	90% CD'S FOR REVIEW	ESD

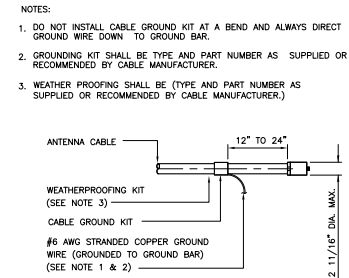
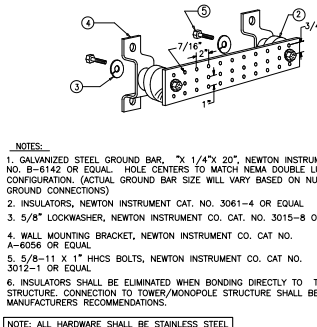
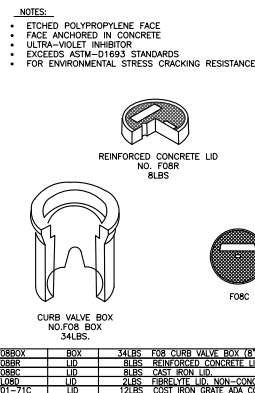
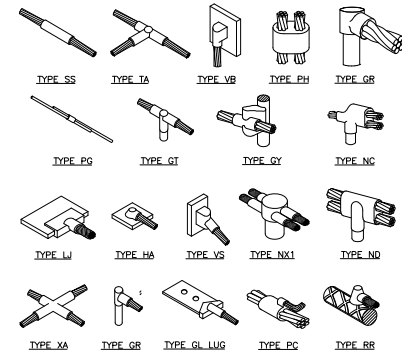
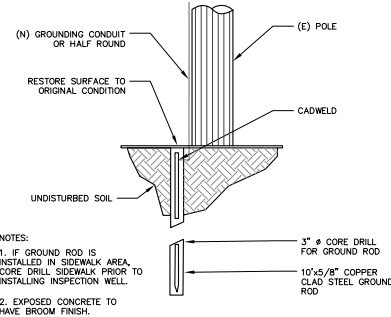
Sheet Title:

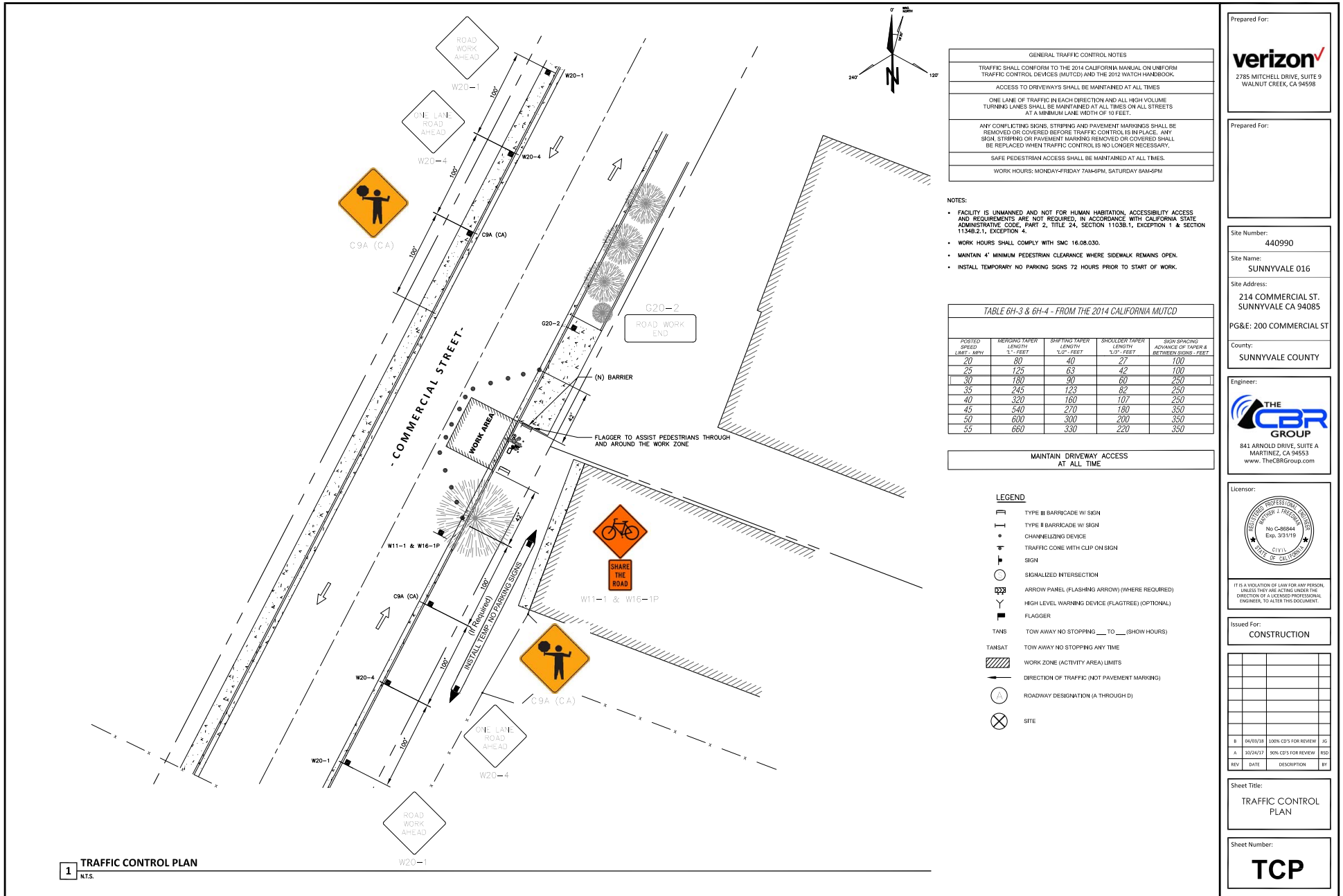
ELECTRICAL GROUND
DIAGRAMS, SINGLE LINE
DIAGRAM

Sheet Number:

E-1

<p>NOT USED</p> <p>SCALE: N.T.S.</p> <p>10</p>	<p>NOT USED</p> <p>SCALE: N.T.S.</p> <p>7</p>	<p>POLE GROUNDING ROD</p> <p>SCALE: N.T.S.</p> <p>4</p>	<p>EXOTHERMIC WELD CONNECTION</p> <p>SCALE: N.T.S.</p> <p>3</p>	<p>Prepared For:</p> <p>verizon 2785 MITCHELL DRIVE, SUITE 9 WALNUT CREEK, CA 94598</p> <p>Prepared For:</p> <p>Site Number: 440990</p> <p>Site Name: SUNNYVALE 016</p> <p>Site Address: 214 COMMERCIAL ST. SUNNYVALE CA 94085</p> <p>PG&E: 200 COMMERCIAL ST</p> <p>County: SUNNYVALE COUNTY</p> <p>Engineer:</p> <p>THE CBR GROUP 841 ARNOLD DRIVE, SUITE A MARTINEZ, CA 94553 www.TheCBRGroup.com</p> <p>Licenser:</p> <p></p> <p>IT IS A VIOLATION OF LAW FOR ANY PERSON, UNLESS THEY ARE ACTING UNDER THE DIRECTION OF A LICENSED PROFESSIONAL ENGINEER, TO ALTER THIS DOCUMENT.</p> <p>Issued For: CONSTRUCTION</p> <table border="1"> <tr> <th>REV</th> <th>DATE</th> <th>DESCRIPTION</th> <th>BY</th> </tr> <tr> <td>B</td> <td>06/03/18</td> <td>100% CD'S FOR REVIEW</td> <td>JS</td> </tr> <tr> <td>A</td> <td>10/24/17</td> <td>90% CD'S FOR REVIEW</td> <td>RSD</td> </tr> </table> <p>Sheet Title: ELECTRICAL DETAILS</p> <p>Sheet Number: E-2</p>	REV	DATE	DESCRIPTION	BY	B	06/03/18	100% CD'S FOR REVIEW	JS	A	10/24/17	90% CD'S FOR REVIEW	RSD
REV	DATE	DESCRIPTION	BY													
B	06/03/18	100% CD'S FOR REVIEW	JS													
A	10/24/17	90% CD'S FOR REVIEW	RSD													
<p>NOT USED</p> <p>SCALE: N.T.S.</p> <p>11</p>	<p>NOT USED</p> <p>SCALE: N.T.S.</p> <p>8</p>	<p>F08 BOX GROUND WELL DETAIL</p> <p>SCALE: N.T.S.</p> <p>5</p>	<p>BUSS BAR</p> <p>SCALE: N.T.S.</p> <p>2</p>													
<p>NOT USED</p> <p>SCALE: N.T.S.</p> <p>12</p>	<p>NOT USED</p> <p>SCALE: N.T.S.</p> <p>9</p>	<p>NOT USED</p> <p>SCALE: N.T.S.</p> <p>6</p>	<p>CONNECTION OF CABLE GND. KIT TO ANTENNA</p> <p>SCALE: N.T.S.</p> <p>1</p>													





Prepared For:

verizon
2785 MITCHELL DRIVE, SUITE 9
WALNUT CREEK, CA 94598

Prepared For:

Site Number:

440990

Site Name:
SUNNYVALE 016

Site Address:
214 COMMERCIAL ST.
SUNNYVALE CA 94085

PG&E: 200 COMMERCIAL ST

County:
SUNNYVALE COUNTY

Engineer:

THE CBR GROUP
841 ARNOLD DRIVE, SUITE A
MARTINEZ, CA 94553
www.TheCBRGroup.com

Licenser:

CIVIL ENGINEER
No. CA-8884
Exp. 3/31/19
CIVIL
STATE OF CALIFORNIA

IT IS A VIOLATION OF LAW FOR ANY PERSON, UNLESS THEY ARE ACTING UNDER THE DIRECTION OF A LICENSED PROFESSIONAL ENGINEER, TO ALTER THIS DOCUMENT.

Issued For:
CONSTRUCTION

REV	DATE	DESCRIPTION	BY
B	04/03/18	100% CD'S FOR REVIEW	JS
A	10/24/17	90% CD'S FOR REVIEW	ESD

Sheet Title:
TRAFFIC CONTROL PLAN

Sheet Number:

TCP