



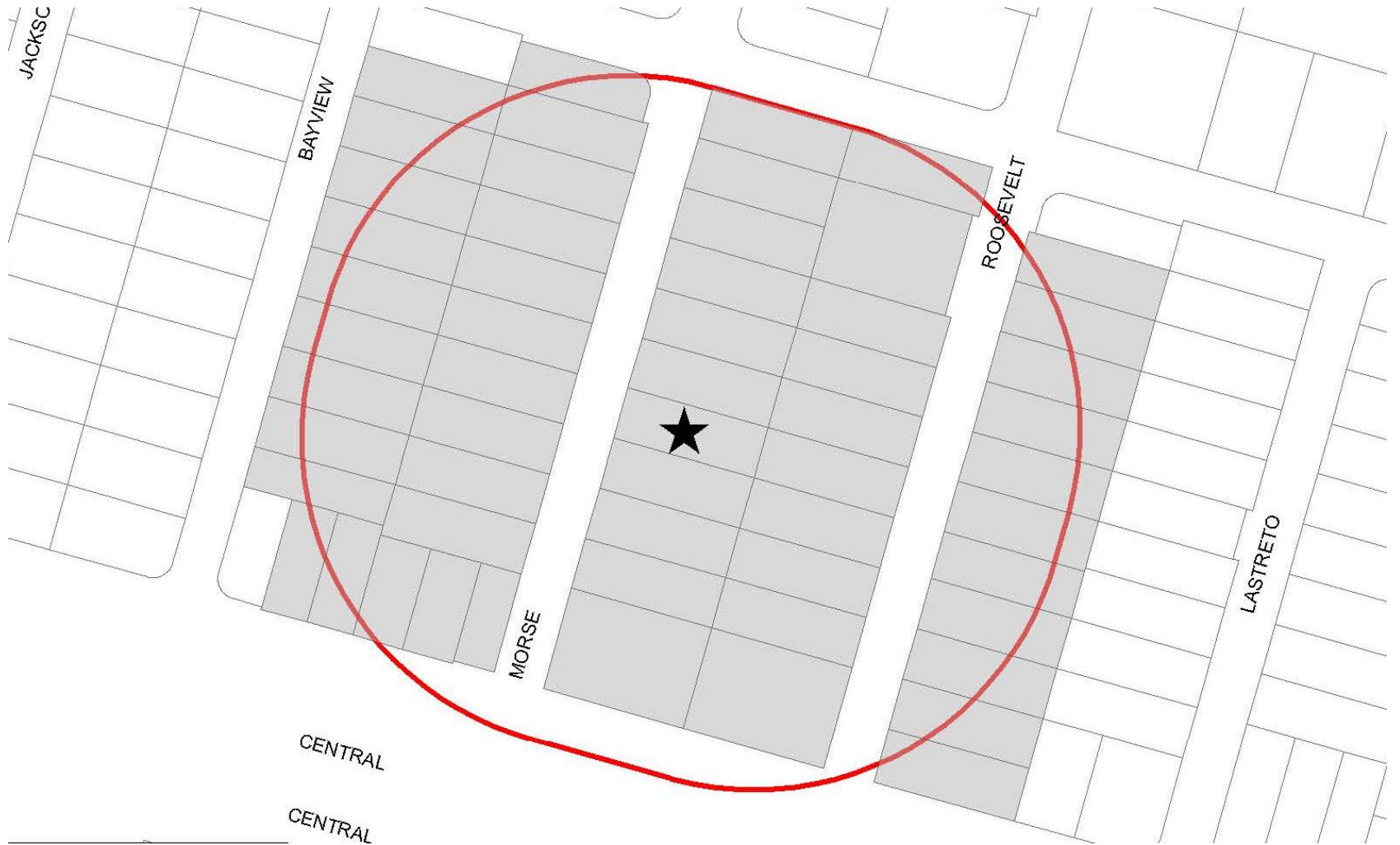
Sunnyvale

348 Morse Avenue
2018-7035

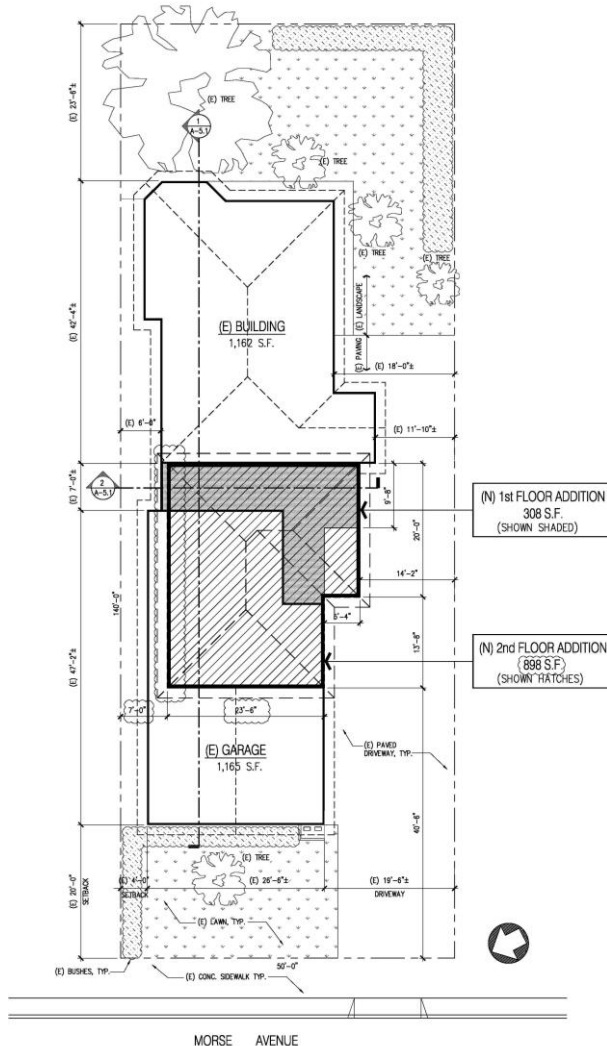
Kelly Cha

Planning Commission, 7/9/2018

Noticing and Vicinity Map



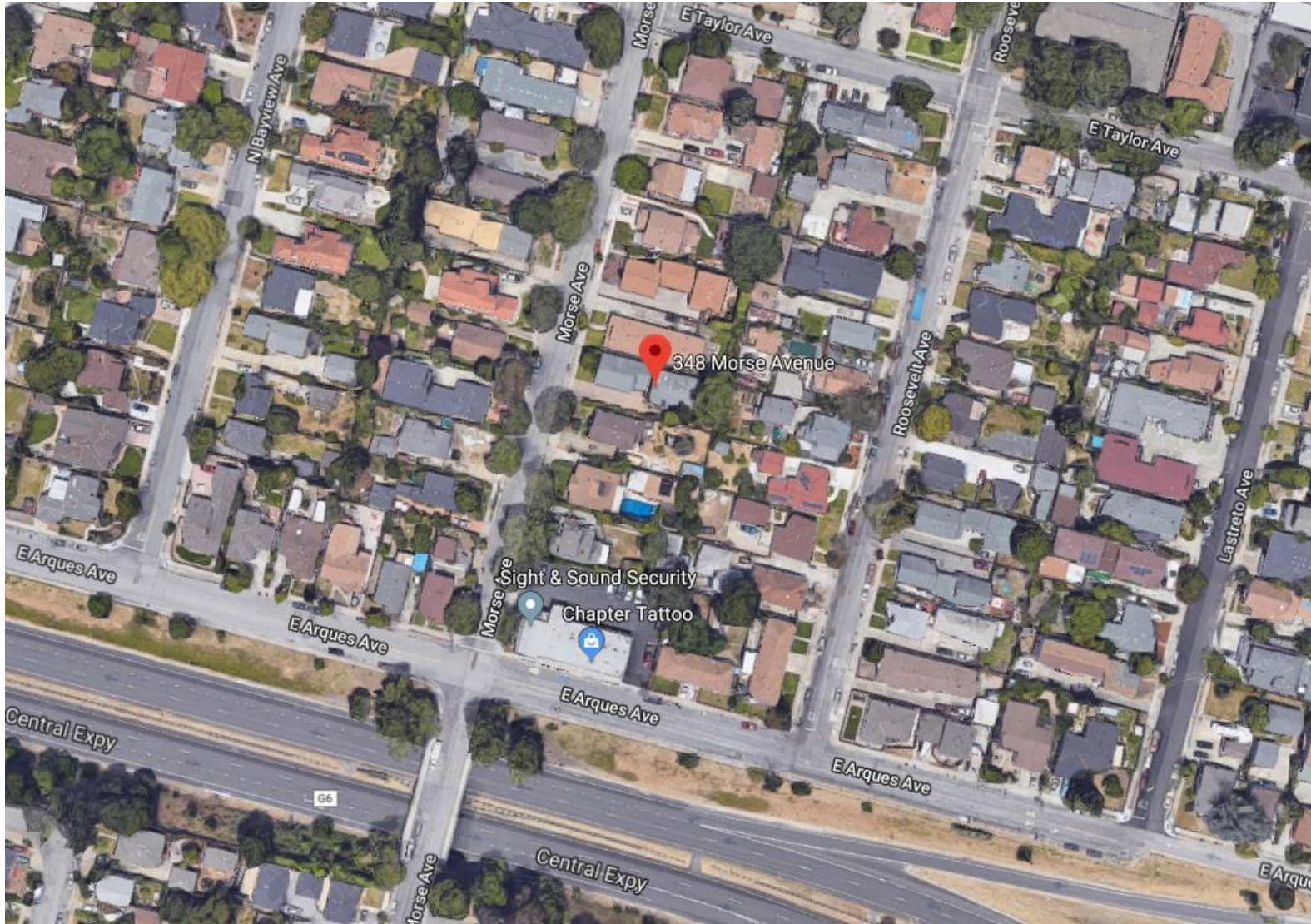
Background



Lot Conditions and Proposed Project

- Zoning: **R-2**
- Lot Area: **7,000 s.f.**
- Gross Floor Area: **3,435 s.f.**
- Floor Area Ratio: **49.07%**
- Lot Coverage: **36.25%**
- Height: **approx. 27 feet**

Neighborhood



Streetscape Elevation



Recommendation

Alternatives

1. Approve the Design Review with the Conditions of Approval in Attachment 4.
2. Approve the Design Review with modified conditions.
3. Deny the Design Review and provide direction to staff and the applicant where changes should be made.

Staff Recommendation

Alternative 1: Approve the Design Review with the Conditions of Approval in Attachment 4.