




# City of Sunnyvale Town Hall Meeting

Airplane Noise Update

August 23, 2018





Welcome

# Agenda

Welcome and Introductions

Noise Mitigation Efforts to Date

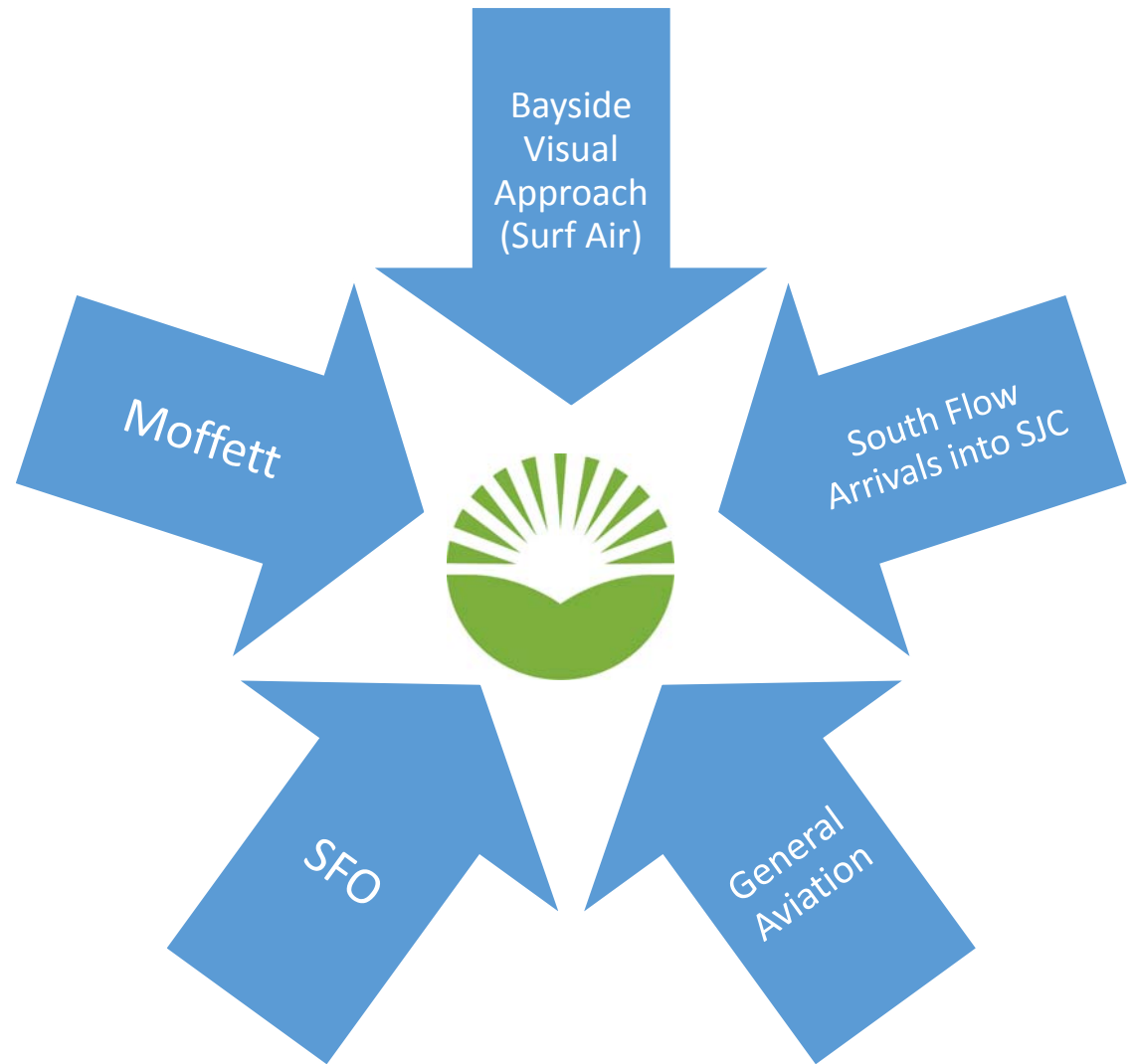
Next Steps

Congressman Khanna

Public Comment

Closing Remarks

# Airplane Noise Sources in Sunnyvale



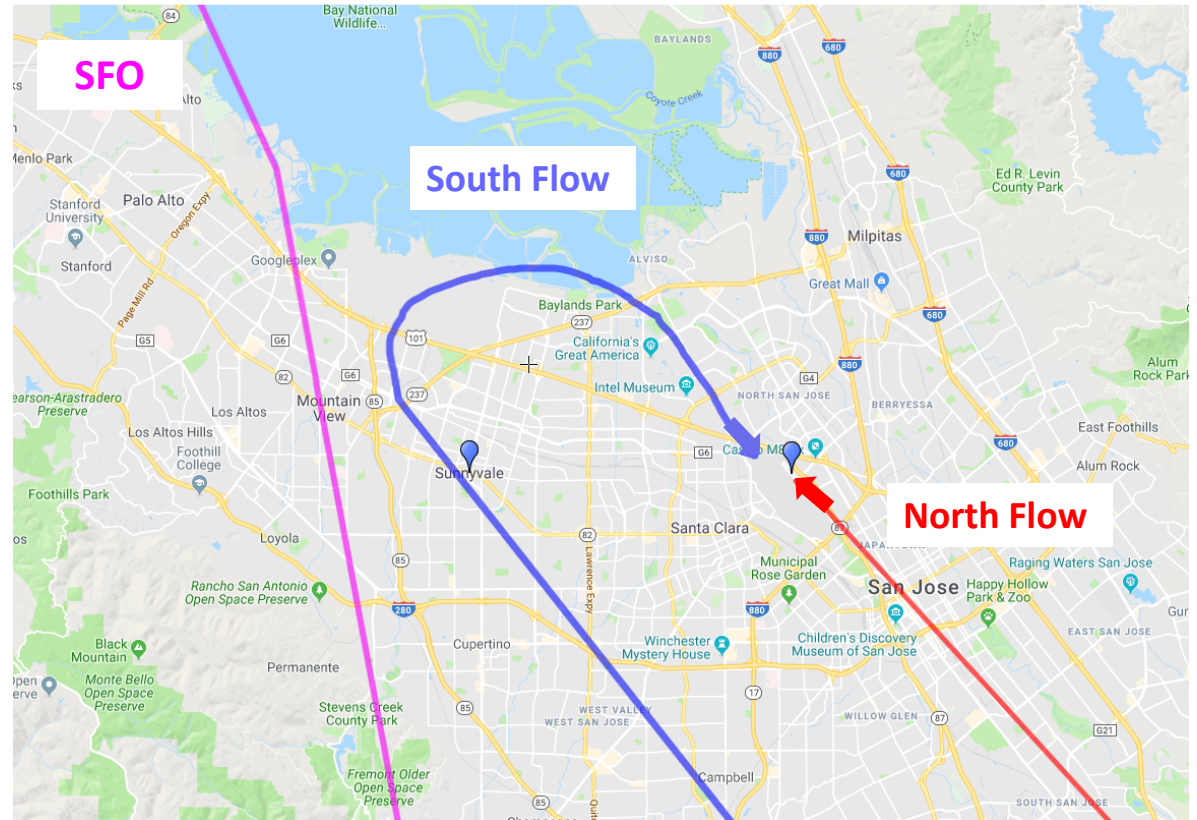
## Bayside Visual Approach (BVA)

- Six Month Pilot concluded January 2017
- Procedure continues to be under FAA review

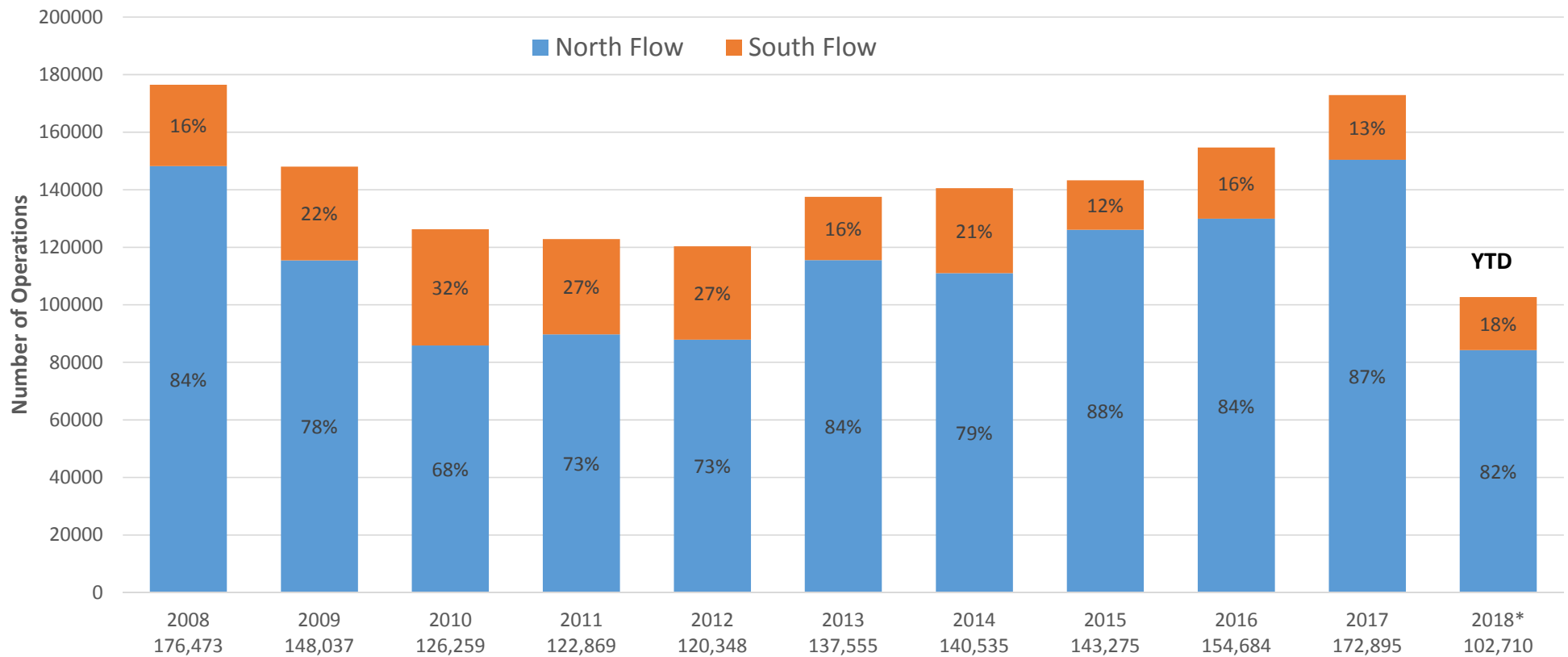


# South Flow Operations

---



# South Flow Arrivals





# Ad Hoc Advisory Committee on South Flow Arrivals

---

# Ad Hoc Advisory Committee Recommendations to FAA



## Recommendation areas:

- Fly a more dispersed Western Approach
- Explore other approaches
- Modify procedures to reduce the ground noise generated by aircraft
- Implement FAA policy changes
- Avoid noisy flight maneuvers
- Implement noise management measures at SJC
- Explore single regional noise reporting system

Link to Report: [www.flysanjose.com/Ad\\_Hoc\\_Meetings](http://www.flysanjose.com/Ad_Hoc_Meetings)

# Fly a More Dispersed Western Approach

Even distribution of existing aircraft between the ZORSA and PUCKK waypoints

2011

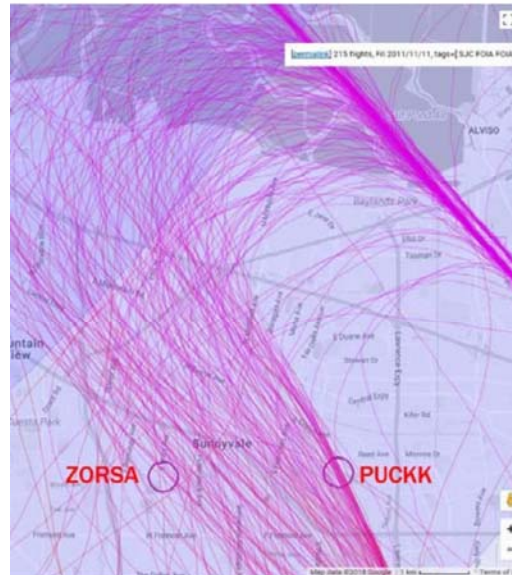


Figure 1. Dispersion prior to 2012. (11/11/2011)  
RSA is ~2nm (2.3 miles) west of PUCKK

2016

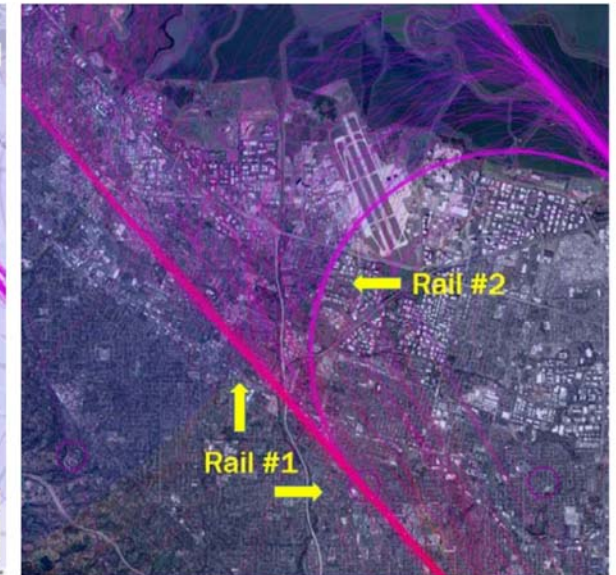
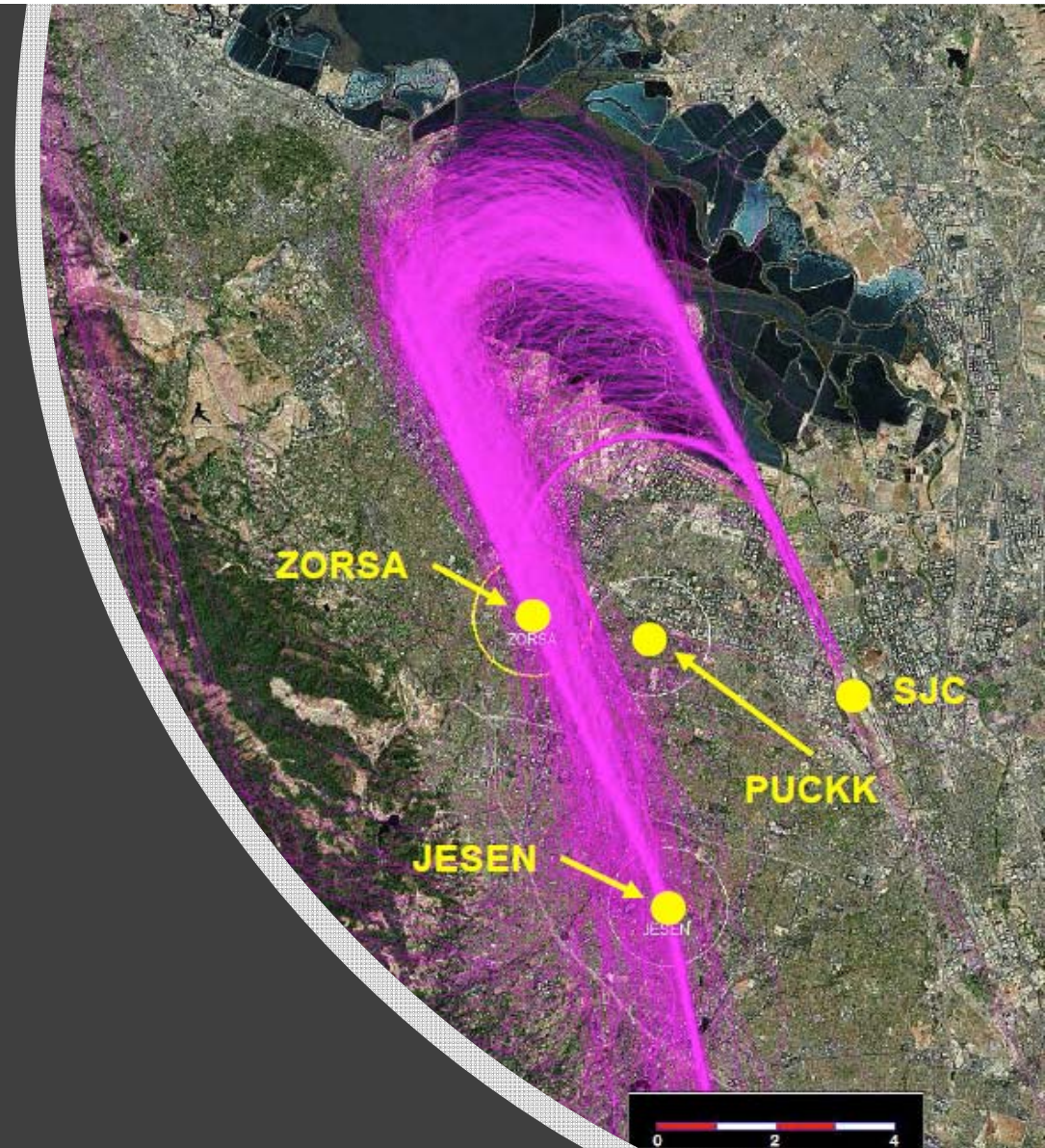


Figure 2. Two rails after Nextgen. (3/11/2016)

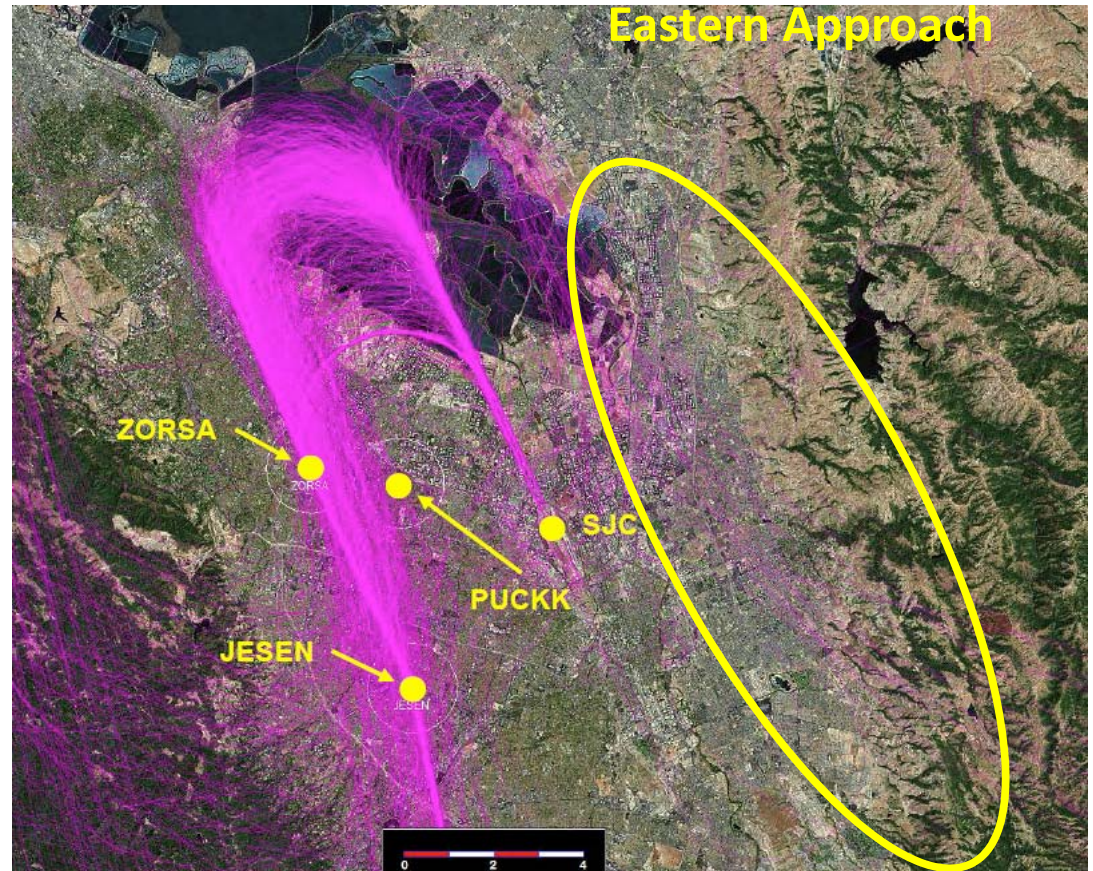
# Altitude: Raise altitude at ZORSA

- A sampling of 1,262 south flow arrivals in 2018
- 83% tracks travel within 1NM radius around ZORSA (1,043)
- Average altitude passing ZORSA is 3,080 feet MSL



# Explore Other Approaches

- **Request to the FAA 2A:** The Ad Hoc Advisory Committee requests the FAA maintain the use of the Eastern vectoring for south flow arrivals as much as operationally feasible. This is an important tool in the controller's toolkit.
- **Request to the FAA 2B:** The Ad Hoc Advisory Committee requests the FAA study the usage of the Eastern vectoring for south flow arrivals for the past 5 years and provide an explanation for any changes, increases and/or decreases.
- **Request to the FAA 2C:** The Ad Hoc Advisory Committee requests the FAA to document why, when, and how an Eastern vectoring is used into SJC during south flow.
- **Request to the FAA 2D:** The Ad Hoc Advisory Committee requests the FAA to explore a Chartered Visual Approaches from the east and west.



# City of Sunnyvale Next Steps:

- Evaluate installation of airplane noise sound monitors in Sunnyvale
- Review response timeline from FAA on Ad Hoc Advisory Committee on South Flow Arrivals recommendations.
- Participate in the Santa Clara County Cities Association Roundtable Formation.
- Continue to work with our regional partners.





Congressman  
Khanna



Public Comment

Thank you!