

MICROFILM SLIPSHEET

AGREEMENT NO. 9U-296

COUNTY, ROUTE, POSTMILE 9U-101; PM 44.8/46.0

LOCAL AGENCY CITY OF SUNKNOVALE

FREEWAY MAINTENANCE AGREEMENT

THIS AGREEMENT, made and entered into, in duplicate, this 31st day of MAY, 1962, by and between the State of California, acting by and through the Department of Public Works, Division of Highways, hereinafter for convenience referred to as "the State," and the City of Sunnyvale, hereinafter for convenience referred to as "the City," witnesseth:

WHEREAS, on September 8, 1959, a Freeway Agreement was executed between the City and the State relating to the development, as a freeway, of that portion of State Highway Routes 68 and 113, within the limits of the City of Sunnyvale, and

WHEREAS, under the provisions of said Freeway Agreement, the City agreed to certain adjustments in the City street system, and for the carrying of certain streets over or under or to a connection with the freeway, and

WHEREAS, said freeway has now been completed or is nearing completion, and the parties mutually desire to clarify the division of maintenance responsibility as to separation structures, and city streets or portions thereof, and landscaped areas, within the freeway limits.

NOW THEREFORE, IT IS AGREED:

1. ROADWAY SECTIONS

The City will maintain, at City expense, all portions of city streets and appurtenant structures and bordering areas, colored in yellow on the attached map marked Exhibit "A" and made a part hereof by this reference.

2. VEHICULAR OVERCROSSINGS

The State will maintain, at State expense, the entire structure below the top of the concrete deck surface, exclusive of any bituminous surface treatment thereof. The City will maintain, at City expense, the top of the concrete deck surface, together with any bituminous surface treatment thereon, and all portions of the structure above the concrete deck surface, and shall perform such other work as may be necessary to insure an

impervious and otherwise suitable surface. The City will also maintain all traffic service facilities provided for the benefit or control of city street traffic.

3. VEHICULAR UNDERCROSSINGS

The State will maintain the structure proper. The roadway section, including the traveled way, shoulders, curbs, sidewalks, walls, drainage installations and traffic service facilities, and all water lines except those incased within the walls, deck or floor of the structure, will be maintained by the City.

4. PEDESTRIAN OVERCROSSINGS

Except for damage to the structure resulting from freeway vehicular traffic, the City will maintain pedestrian overcrossings in their entirety.

5. PEDESTRIAN UNDERCROSSINGS

The State will maintain the structure from a structural standpoint. The City will maintain all drainage and lighting installations, and all water lines except those incased within the walls, deck or floor of the structure. The City will also be responsible for all cleaning and painting as may be required to keep the structure free of debris and obscenity.

6. LANDSCAPED AREAS

All plantings or other types of roadside development within the freeway limits and colored in yellow on Exhibit "A" will be maintained by the City.

7. EFFECTIVE DATE

This Agreement shall be effective upon the date of its execution by the State; it being understood and agreed, however, that the execution of this Agreement shall not affect any pre-existing obligations of the City to maintain designated areas pursuant to prior written notice from the State that work in such areas, which the City has agreed to maintain pursuant to the terms of the Freeway Agreement, has been completed.

STATE OF CALIFORNIA
DEPARTMENT OF PUBLIC WORKS
DIVISION OF HIGHWAYS

J. C. WOMACK
STATE HIGHWAY ENGINEER

Approval Recommended

By *Chas. E. Galt*
Deputy State Highway Engineer

JUL 12 1962

J. H. Wrenn
District Engineer

CITY OF SUNNYVALE

Edward T. ...
Maintenance Engineer

James B. Scott
Mayor

Approval as to Form

PERKY SCOTT
City Clerk

Harold P. Marsh
Attorney for Department

BY: *Sam ...*
Deputy City Clerk

Frank Gullis
Attorney

RESOLUTION NO. 5199

A RESOLUTION OF THE CITY COUNCIL OF THE CITY OF
SUNNYVALE APPROVING FREEWAY MAINTENANCE AGREEMENT

WHEREAS, the State of California, through its Department of Public Works,
Division of Highways, has presented an agreement entitled "Freeway Maintenance
Agreement" which concerns State Highway Routes 68 and 113, in the City of
Sunnyvale between the west city limits and the east city limits, and,

WHEREAS, the City Council has heard/read said agreement in full and is
familiar with the contents thereof;

THEREFORE, be it resolved by the City Council of the City of Sunnyvale,
that said Freeway Maintenance Agreement be and the same is hereby approved
and the Mayor and the Deputy City Clerk are directed to execute the same on
behalf of said City.

PASSED AND ADOPTED on the 29th day of May, 1962 by the following called vote:

AYES: Councilmen: Brown, Kerr, Logan, McDaniel, Russell and Scott

NOES: Councilmen: None

ABSENT: Councilman: Jones

APPROVED:


Mayor

ATTEST:

PERRY SCOTT, City Clerk

BY: 

Deputy City Clerk

I hereby certify that the foregoing resolution was duly and regularly passed by
the City Council of the City of Sunnyvale at a regular meeting thereof held on
May 29, 1962.

PERRY SCOTT, City Clerk

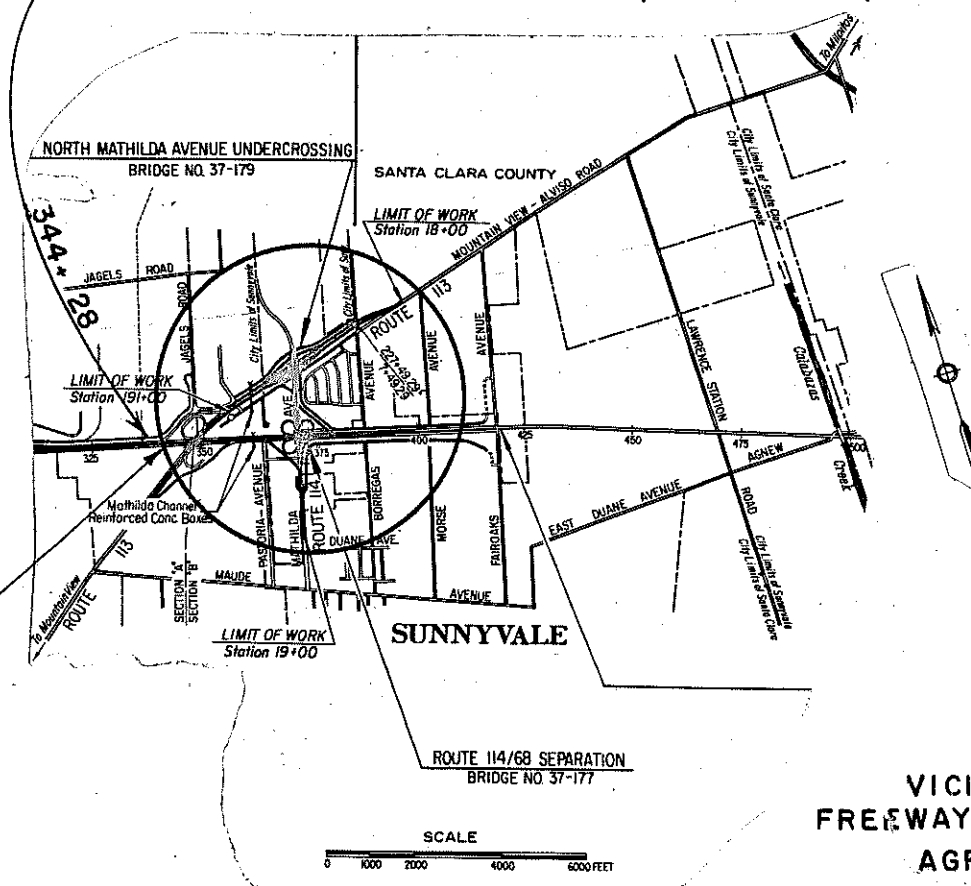
BY: 

Deputy City Clerk

DIST.	CO.	RTE.	SEC.	SHEET OF SHEETS
IV	SCI	68	Surv.	6

1962

LOCATION LIMITS (SEE SHEET-2)



LOCATION NO. 1
SEE SHEETS 3 & 4
FOR DETAILS

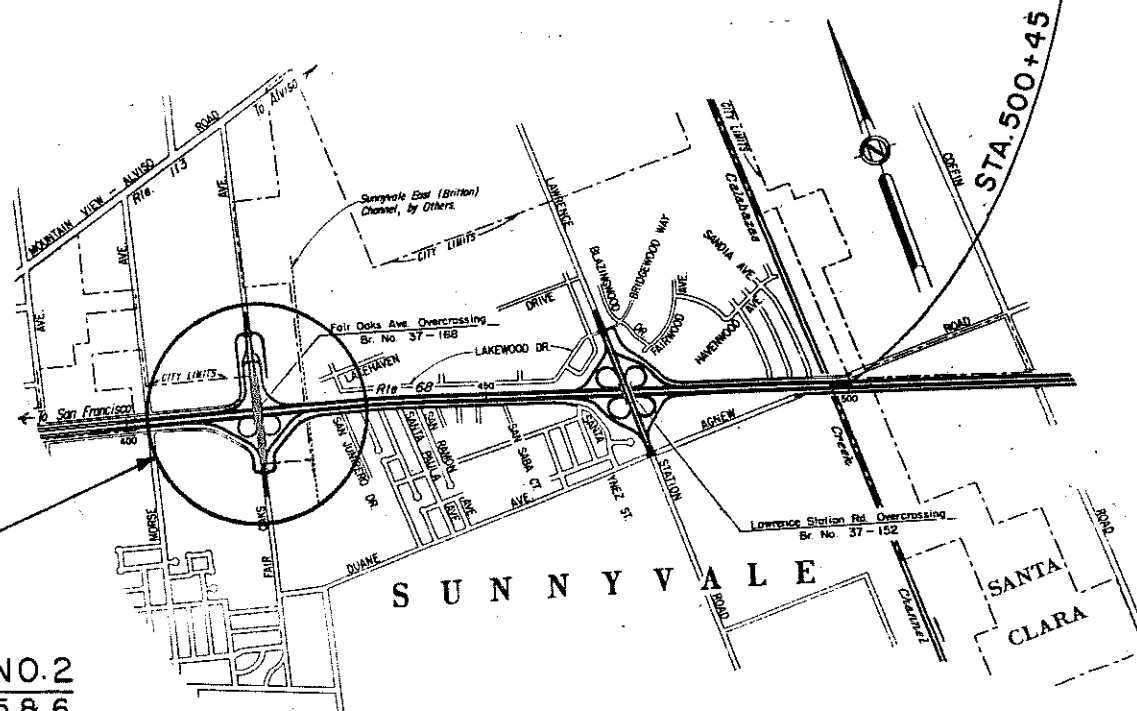
Area to be maintained by City

VICINITY MAP
FREEWAY MAINTENANCE
AGREEMENT
EXHIBIT "A"

DIST.	CO.	RTE.	SEC.	SH.	OF SHEETS
IV	SCI	68	Sunv	2	6

1962

LOCATION LIMITS



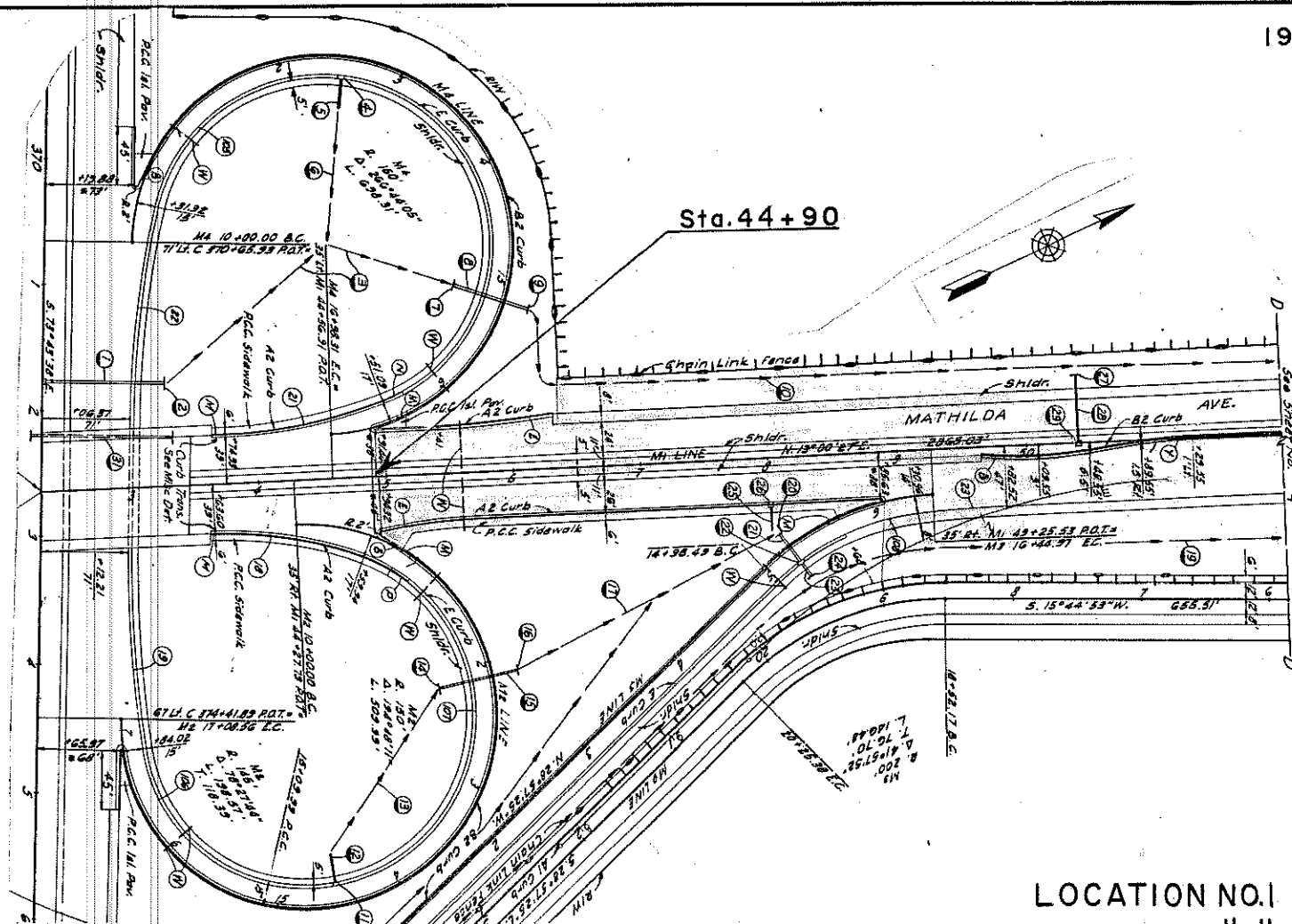
LOCATION NO. 2
SEE SHEETS 5 & 6
FOR DETAILS

Area to be maintained by City

VICINITY MAP
FREEWAY MAINTENANCE
AGREEMENT
EXHIBIT "A"

DIST.	CO.	RTE.	SEC.	SHEET OF SHEETS	
IV	SCI	6'8	Sunv	3	6

1962

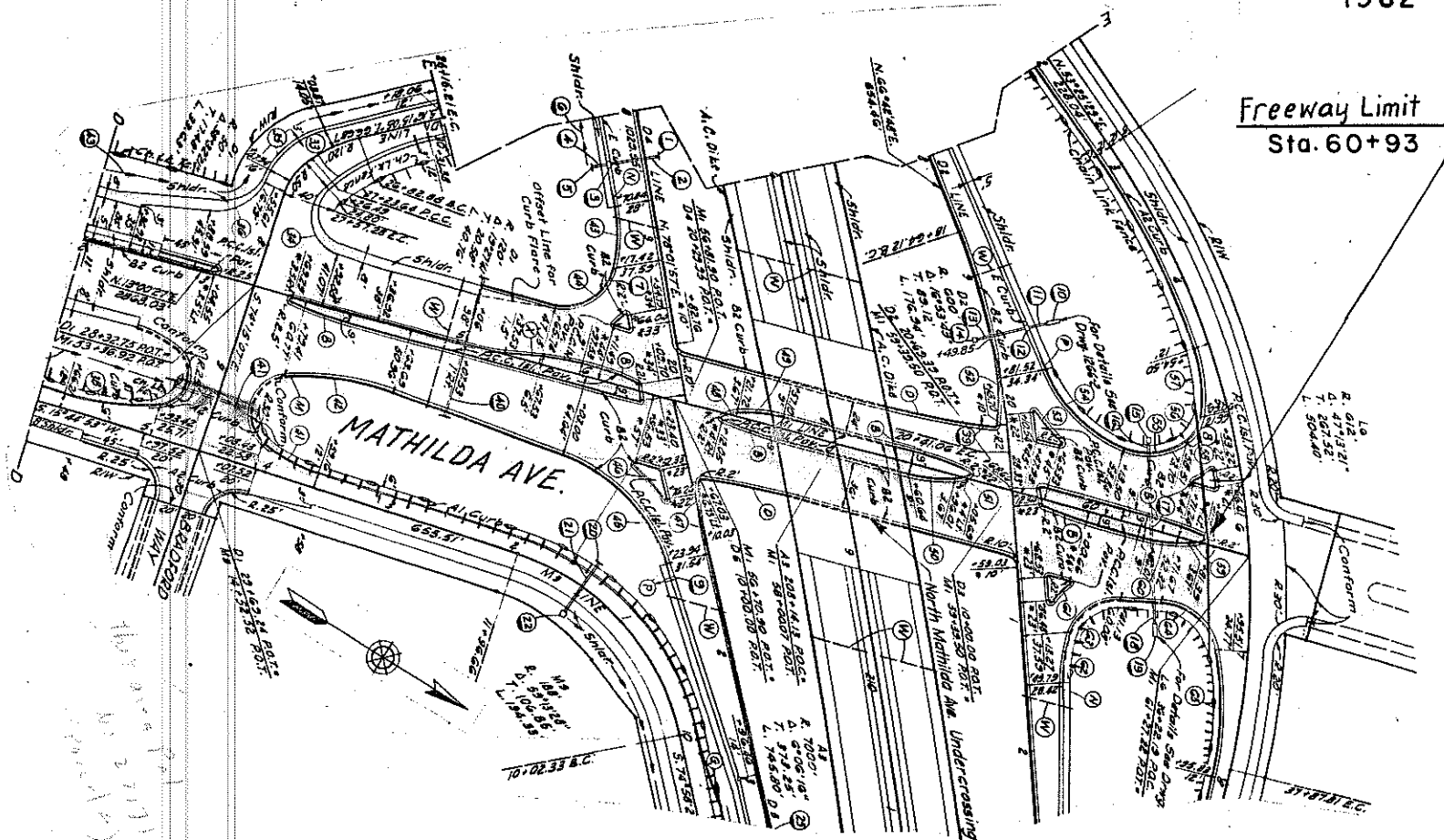


LOCATION NO. 1
EXHIBIT "A"

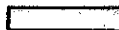
DIST.	CO.	RTE.	SEC.	SHEET OF SHEETS	
IV	SCI	113	Surv	4	6

1962

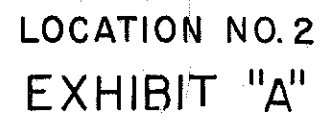
Freeway Limit
Sta. 60+93



Area to be maintained by City



LOCATION NO. 1
EXHIBIT "A"

1962

DIST.	CO.	RTE.	SEC.	SHEET	OF SHEETS
IV	SCI	68	Surv	6	6

1962

