



Sunnyvale

1019 Edmonds Court
2018-7655

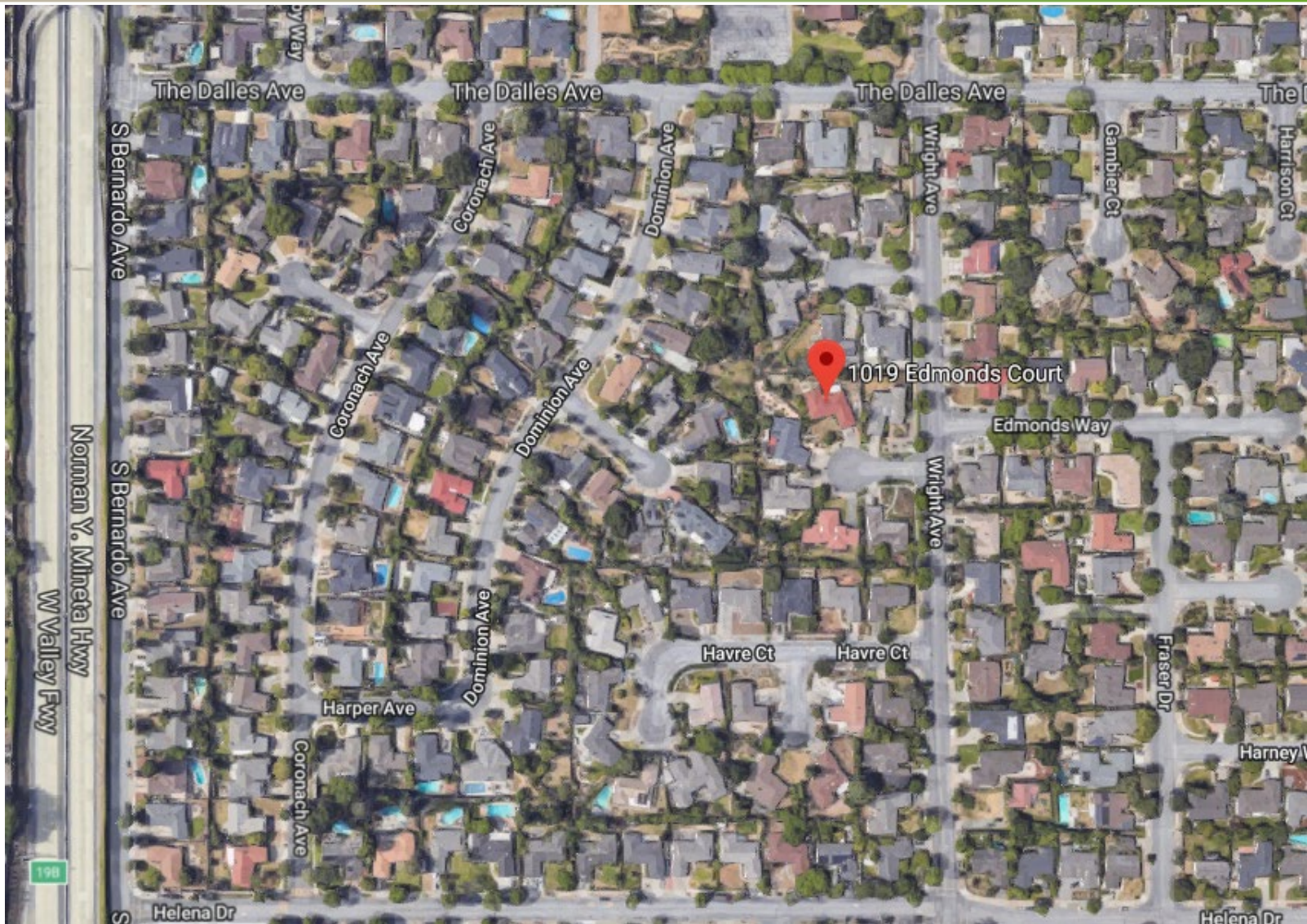
Kelly Cha, Associate Planner
Planning Commission, February 11, 2019

Background

Lot Conditions and Proposed Project

- Zoning: **R-1**
- Lot Area: **12,605 s.f.**
- Gross Floor Area of main home: **5,996 s.f.**
- Floor Area Ratio (excluding ADU): **47.6%**
- Lot Coverage: **39.9%**
- Height: **approx. 26 feet**

Neighborhood



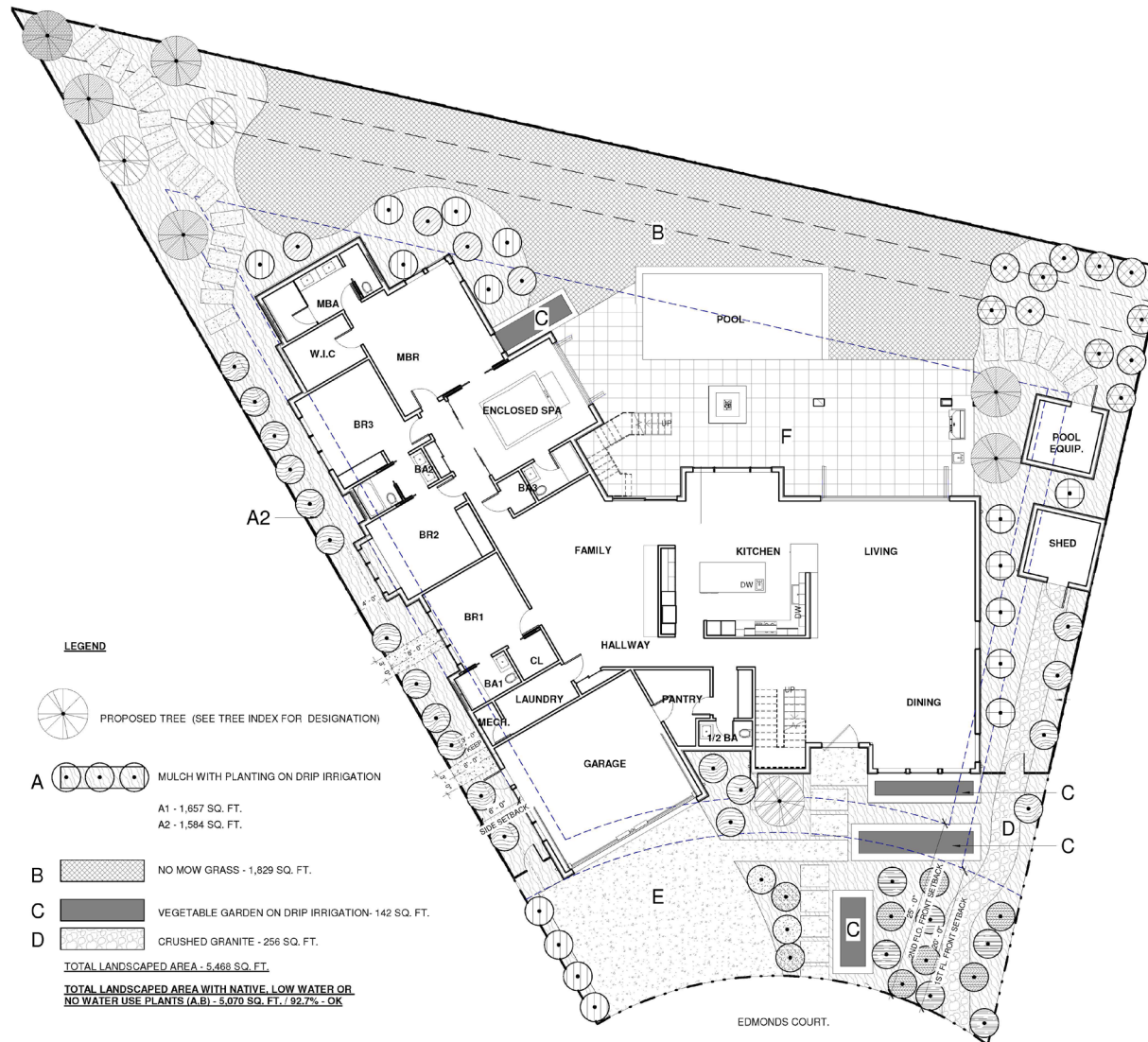
Neighborhood



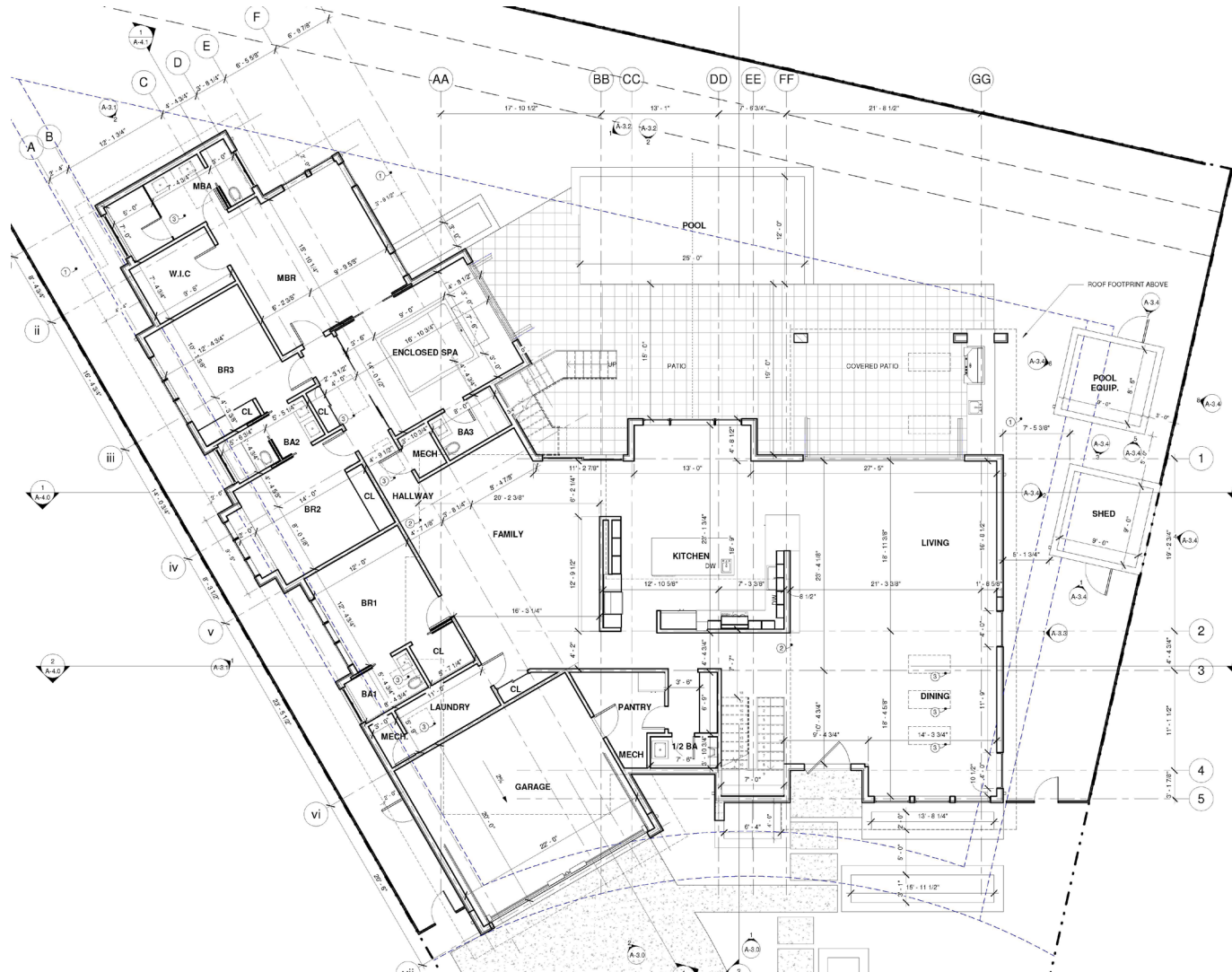
Project Rendering



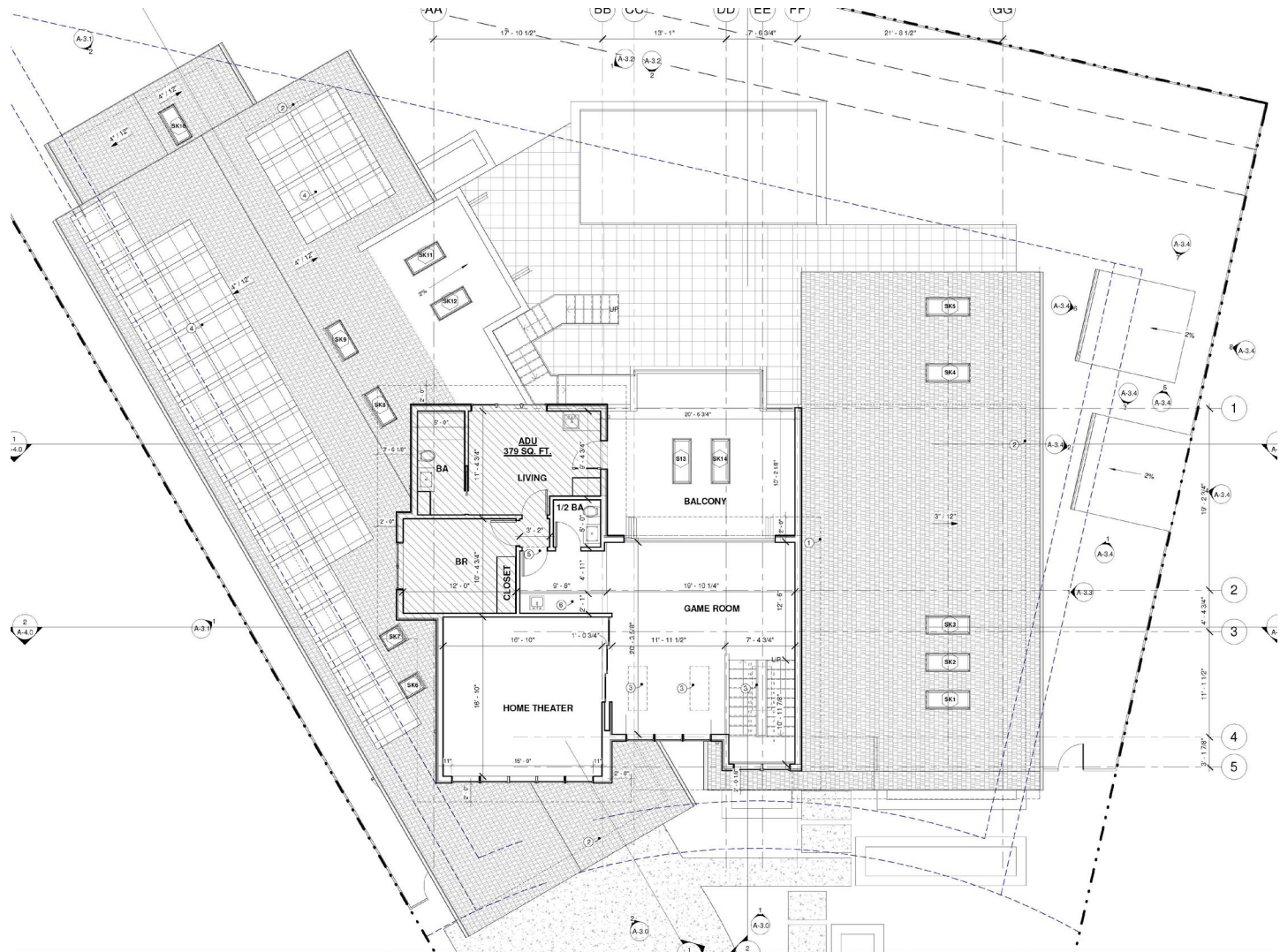
Site Plan



Floor Plan – 1st Floor



Floor Plan – 2nd Floor



Recommendation

Alternatives

1. Approve the Design Review with the Conditions of Approval in Attachment 4.
2. Approve the Design Review with modified conditions.
3. Deny the Design Review and provide direction to staff and the applicant where changes should be made.

Staff Recommendation

Alternative 1: Approve the Design Review with the Conditions of Approval in Attachment 4.