



Sunnyvale

Preschool Outdoor Play Area: Murphy Park

Department of Public Works
City Council Chambers
Parks & Recreation Meeting of 03/13/19



The Project

Capital Improvements Project (CIP)

- Approved and budgeted program for design and construction under Budget No. 831880

Purpose

- Provide a dedicated outdoor play space and storage for preschool programs at two parks
- Phase I – Murphy Park location
- Phase II – Serra Park location

The Project

Purpose (continued)

- Popular program – expected growth; demand will require this dedicated space for enhanced safety

Scope of Project

- New non-slip surface outdoor play area
- Fencing with lockable entry
- Educational learning stations
- Storage for preschool equipment

The Project

Steps taken by Staff to date

- Contract with design firm of O'Dell Engineering
- Developed two design concepts
- Hosted one community meeting
- Provide information to the Commission tonight

Community Meeting

- Meeting held at Murphy Park - December 12, 2018
- Public attendees – eight including members from this commission and Councilmember Michael Goldman
- Two concepts presented:
 - ◆ Concept A – “Learning Environments”
 - ◆ Concept B – “The Railroads”

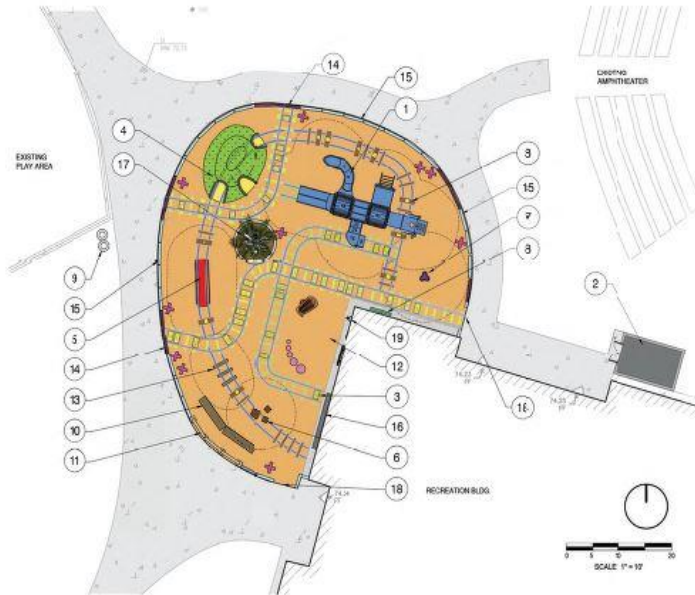
Community Meeting

- Public comments noted:
 - ◆ Concern of appearance and location of proposed shed
 - ◆ Use continuous play surface as oppose to tiles
 - ◆ Preference of circular track for scooters or tricycles
 - ◆ Include slides
 - ◆ Installation of a hill/mound area
 - ◆ Durability and security of certain play features
 - ◆ Railroad ties may present tripping hazard

Proposed Location at Murphy Park



Preferred Concept



1 CENTER PIECE: KID EXPRESS TRAIN



2 STORAGE SHED (10' x 8')



3 SURFACING: POURED IN PLACE RUBBER W/ CUSTOM PATTERN



FIXED PLAY ELEMENTS



4 ARTIFICIAL TURF MOUND W/ TUNNELS



5 BALANCE BEAM



6 CRATES WITH WOOD FINISH



7 SADDLE SPINNER



8 SPINNING DIAL ON BUILDING WALL

OUTDOOR CLASSROOM



11 OUTDOOR MAGNETIC CHALKBOARD



12 MUSICAL INSTRUMENTS ZONE



LEGEND

- 16 Existing Mural On Building Wall
- 17 Existing Palm Tree Retained With 10' Circular Mulch Bed
- 18 4" Wide Pedestrian Rolling Gate
- 19 Water Tap
- Fall Zone Around Play Equipment



9 TRASH RECEPTACLES (CITY STANDARD)



10 MOVABLE BENCH ON CASTERS



DESIGN INTENT: 'TRAIN TRACK PATTERNS'



RAIL SIGNS



13 RAILROAD TIES



14 SELECTED CUSTOM FENCE PANELS (EDUCATIONAL THEME)



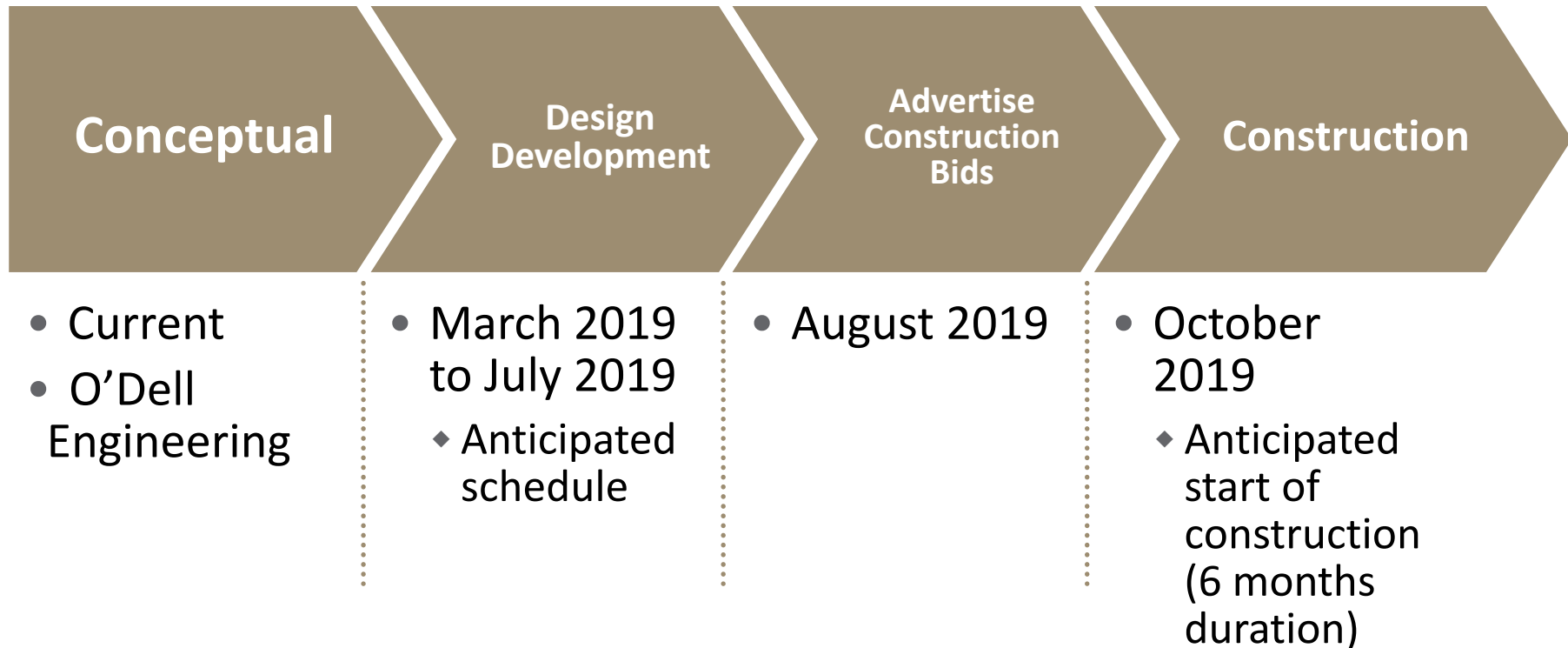
15 4' HIGH ORNAMENTAL IRON FENCE

CONCEPT - THEME 'LEARNING ON THE RAILS'

Project Costs

- Current estimate (conceptual with 20% contingencies) = \$311,000.00
- Staff expects a reduction in the estimate as details are refined

Next Steps



Recommendation

Key Points

- Capital Improvements Project already programmed
- Concept design is in conformance with the programmed scope and needs
- Second phase to follow once Murphy location design is awarded for construction.

Staff Recommendation

- Move forward with design of the preferred concept



Sunnyvale

Questions?