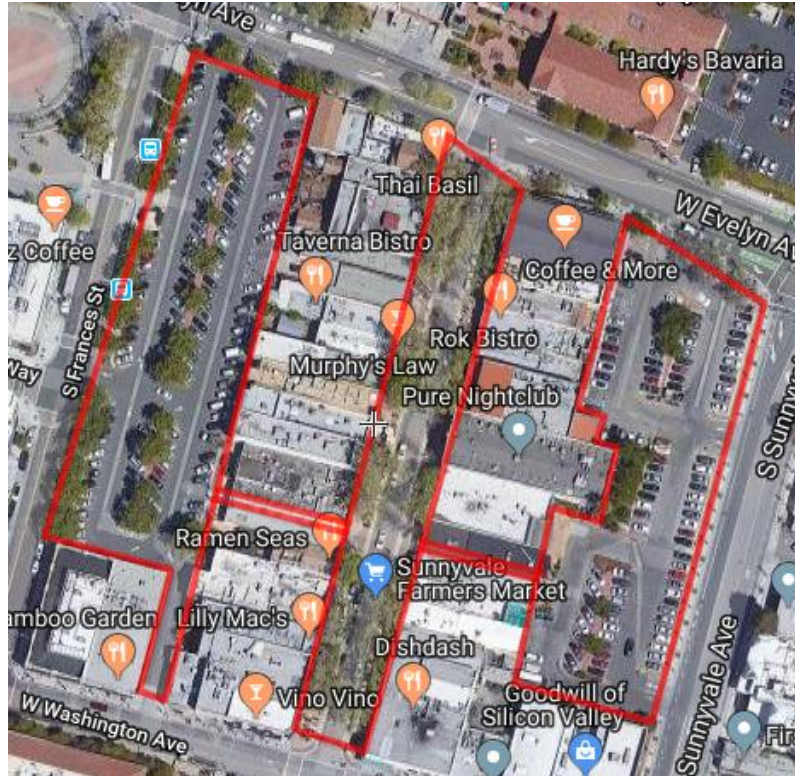


OCM 17-01 Storing Outdoor Furniture Overnight on Sidewalks on Murphy Ave Options

Current Murphy Ave Maintenance Areas

Murphy Ave. maintenance areas include the following locations, as outlined in red on the map below:

- 100 block of South Murphy Ave Pedestrian and Furnishings Zone
- Goodwill and Frances Parking Lots (directly behind 100 block of Murphy Ave businesses)
- 2 Breezeways



Option 1: No Change to the Current Murphy Ave Maintenance Schedule

Day of the Week	Time	Service**	Merchant Requirements
Monday and Friday	5:00AM	<ul style="list-style-type: none"> • Blow down sidewalks • Empty garbage receptacles • Pick up litter 	<ul style="list-style-type: none"> • Murphy Ave. merchants are required to bring outdoor dining furniture indoors for sidewalk maintenance
Wednesdays	4:00AM	<ul style="list-style-type: none"> • Pressure wash one side of Murphy Ave sidewalk (Pedestrian and Furnishings Zone) and breezeway, alternating each side of the street per Wednesday 	
Thursdays (during event season*)		<ul style="list-style-type: none"> • Clean up planters on Murphy Ave • Empty garbage receptacles • Blow down parking lots 	

*Event season: Summer Music Series June-August

**Level of service varies based on visual assessment of sidewalk condition and level of maintenance needed, weather conditions, and season.

ATTACHMENT 1

Option 2: Require Shared Maintenance Responsibilities Between the Businesses and the City

Day of the Week	Time	Service	Merchant Requirements
Monday and Friday	TBD by Merchants	<u>Merchant Responsibility:</u> <ul style="list-style-type: none"> Blow down Sidewalks on Murphy Ave <u>City Responsibility:</u> <ul style="list-style-type: none"> Empty garbage receptacles Pick up litter 	<ul style="list-style-type: none"> Murphy Ave. merchants would be responsible for blowing down sidewalks
Wednesdays Thursdays (during event season*)	4:00AM	<u>City Responsibility**:</u> <ul style="list-style-type: none"> Pressure wash one side of Murphy Ave sidewalk (Pedestrian and Furnishings Zone) and breezeway, alternating each side of the street per Wednesday Clean up planters on Murphy Ave Empty garbage receptacles Blow down parking lots 	<ul style="list-style-type: none"> Merchants would only bring in outdoor dining furniture on Tuesday nights for pressure washing maintenance (Wednesday during event season)

Option 3: No Change to the Maintenance Schedule, Merchants Bring in Furniture Three Nights a Week

Day of the Week	Time	Service**	Merchant Requirements
Monday and Friday	5:00AM	<u>City Responsibility:</u> <ul style="list-style-type: none"> Blow down Sidewalks Empty garbage receptacles Pick up litter 	<ul style="list-style-type: none"> Murphy Ave. merchants are required to bring outdoor dining furniture indoors for sidewalk maintenance on Sunday, Tuesday (Wednesday during event season) and Thursday
Wednesdays Thursdays (during event season*)	4:00AM	<u>City Responsibility:</u> <ul style="list-style-type: none"> Pressure wash one side of Murphy Ave sidewalk (Pedestrian and Furnishings Zone) and breezeway, alternating each side of the street per Wednesday Clean up planters on Murphy Ave Empty garbage receptacles Blow down parking lots 	

Option 4: Merchants Take on Full Maintenance of Sidewalks and Breezeways

Day of the Week	Time	Service*	Merchant Requirements
Monday and Friday	TBD by Merchants	<u>Merchants Responsibility:</u> <ul style="list-style-type: none"> Blow down Sidewalks Empty garbage receptacles Pick up litter 	<ul style="list-style-type: none"> Murphy Ave. merchants are required to bring outdoor dining furniture indoors for sidewalk maintenance on Sunday, Tuesday (Wednesday during event season) and Friday Merchants would be responsible for pressure washing fees, estimated at \$4,025 quarterly. Estimate does not include blowing down sidewalks and removal of trash
Wednesdays Thursdays (during event season*)	TBD by Merchants	<u>Merchants Responsibility:</u> <ul style="list-style-type: none"> Pressure wash one side of Murphy Ave sidewalk (Pedestrian and Furnishings Zone) and breezeway, alternating each side of the street per Wednesday Clean up planters on Murphy Ave Empty garbage receptacles Blow down parking lots 	

*Event season: Summer Music Series June-August